

Measles/Rubella Weekly Bulletin



Argentina launches its follow-up campaign targeting all children aged 13 months-4 years old with the measles-mumps-rubella-containing vaccine (MMR). Around three million children will be vaccinated nationwide between October and November of 2018.

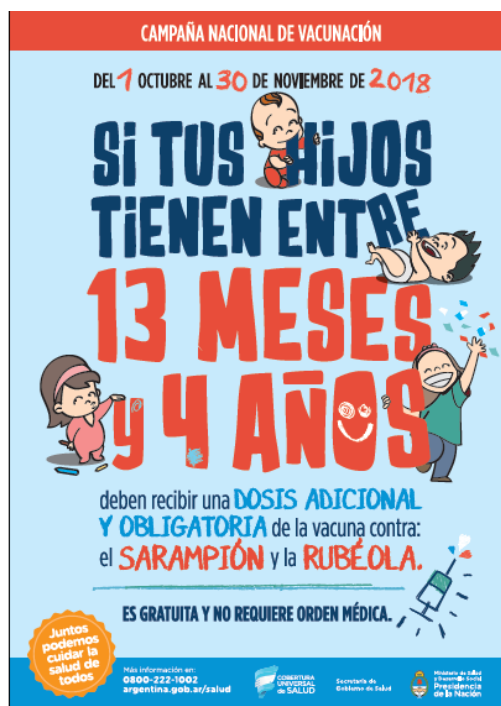


Table.1

Classification of Suspect Measles, Rubella, and Congenital Rubella Syndrome (CRS) Cases for the Period of Weeks 01-39, 2018

Subregion and Country	Susp. Cases 2018	Measles Confirmed 2018			Year/Week Last Conf. Measles case	Rubella Confirmed 2018			Year/Week Last Conf. Rubella Case	Diagnosis of Discarded Cases 2018		Congenital Rubella Syndrome			Year/Week Last Conf. CRS Case	
		Clin.	Lab.	Total		Clin.	Lab.	Total		Dengue	Others	Susp.	Conf.	CRS*		
AND	BOL	193	0	0	0	2000-40	0	0	0	2006-03	0	185	0	0	0	...
	COL	4111	0	105	105	2018-39	0	0	0	2012-31	0	3911	292	0	0	2005-34
	ECU	573	0	19	19	2018-33	0	0	0	2004-49	0	469	0	0	0	2011-14
	PER	653	0	26	26	2018-38	0	0	0	2009-04	1	492	1	0	0	2007-16
	VEN	4605	4605 ^a	2018-35	2007-51
BRA	BRA	10022	50	1685	1735 ^a	2018-37	0	0	0	2014-40	0	2051	41	0	0	2009-34
CAP	CRI	33	0	0	0	2014-09	0	0	0	2001-39	0	24	19	0	0	...
	GTM	477	0	1	1	2018-03	0	0	0	2006-31	26	436	5	0	0	2005-00
	HND	182	0	0	0	1998-16	0	0	0	2004-11	0	181	17	0	0	2001-00
	NIC	193	0	0	0	1994-14	0	0	0	2004-19	0	186	39	0	0	2005-00
	PAN	56	0	0	0	2011-20	0	0	0	2002-48	0	54	3	0	0	...
	SLV	216	0	0	0	2001-19	0	0	0	2006-30	0	199	0	0	0	2001-00
CAR	CAR	268	0	1	1	2018-03	0	0	0	2008-18	0	254	62	0	0	1999-00
LAC	CUB	1340	0	0	0	1993-27	0	0	0	2004-06	0	1340	0	0	0	1989-10
	DOM	116	0	0	0	2011-18	0	0	0	2007-45	14	95	0	0	0	...
	HTI	130	0	0	0	2001-39	0	0	0	2006-21	0	46	9	0	0	...
MEX	MEX	3396	0	5	5	2018-16	0	2	2	2018-14	0	3193	0	0	0	...
NOA	CAN	25	25	2018-36	2016-06	2015-50
	USA	137	137 ^b	2018-36	...	2	2	2017-16	2017-00
SOC	ARG	442	0	11	11	2018-34	0	0	0	2014-22	2	202	19	0	0	2009-27
	CHL	283	0	0	0	2015-27	0	0	0	2011-25	0	264	116	0	0	...
	PRY	552	0	0	0	1998-44	0	0	0	2005-21	71	450	0	0	0	2003-06
	URY	0	0	0	0	1999-08	0	0	0	2001-37	0	0	0	0	0	...
TOTAL		23236	50	6620	6670	--	0	4	4	--	114	14032	623	0	0	--

*Congenital Rubella Infection.

...No updated report received

(a) Pan American Health Organization / World Health Organization. Epidemiological Update: Measles. 21 September 2018, Washington, D.C.: PAHOWHO; 2018.; (b) Provisional data.



Measles/Rubella Surveillance

Table No.22
Infection Source of Measles and Rubella Confirmed Cases for the Period of Weeks 01-39, 2018

Subregion and Country	Measles				Rubella			
	I	IR	CAC	U	I	IR	CAC	U
AND								
BOL				8				
COL	97							
ECU	11	8						
PER	3		3	20				
VEN ^a				4605				
BRA	59	46		1630				
CAP								
CRI								
GTM	1							
HND								
NIC								
PAN								
SLV								
CAR	1							
LAC								
CUB								
DOM								
HTI								
MEX	2	3						
NOA	16	2		7				
USA	57	78		2				
SOC	2	1		8				
ARG								
CHL								
PRY								
URY								
TOTAL	249	138	3	6280	0	0	0	0

Table No.3
Measles/Rubella Suspect Cases Under Investigation for the Period of Weeks 01-39, 2018

Country	Pending Cases 2017	Cumulative 2018	Week of Onset						
			1-34	35	36	37	38	39	% Pend. Cases
BOL	1	8	4	1	1	2	0	0	4
COL	14	95	76	3	12	3	1	0	2
ECU	0	85	85	0	0	0	0	0	15
PER	4	134	54	10	24	26	18	2	14
VEN
BRA	27	5476	5038	177	106	98	57	0	10
CRI	0	9	9	0	0	0	0	0	27
GTM	11	14	10	3	1	0	0	0	2
HND	0	1	1	0	0	0	0	0	1
NIC	0	7	1	1	3	1	1	0	3
PAN	0	2	1	0	0	1	0	0	4
SLV	0	17	9	3	0	4	1	0	5
CAR	1	13	6	1	1	4	1	0	2
CUB	0	0	0	0	0	0	0	0	0
DOM	243	7	7	0	0	0	0	0	7
HTI	25	84	82	1	1	0	0	0	68
MEX	0	196	81	6	23	30	25	31	5
CAN	0	0	0	0	0	0	0	0	...
USA	0	0	0	0	0	0	0	0	...
ARG	2	227	227	0	0	0	0	0	51
CHL	1	19	12	0	2	1	0	4	7
PRY	0	31	11	2	2	2	6	8	3
URY	0	0	0	0
TOTAL	329	6425	5714	208	176	172	110	45	28

I: Imported; IR: Import-related; CAC: Country-acquired case

U: Unknown. (a) Pan American Health Organization / World Health Organization.

Epidemiological Update: Measles. 21 September 2018, Washington, D.C.: PAHO/WHO; 2018

... No updated report received

Table 4
Indicators of Integrated Measles/Rubella Surveillance for the Period of Weeks 01-39, 2018

Subregion and Country	Sites Reporting Weekly		% Cases with Adequate Investigation	% Cases with Adequate Sample	% Blood Samples Received in Lab. ≤5 days	% Lab. Results ≤4 days	Rate of Suspected Cases Last 52 weeks (2017/40-2018/39)	
	Total Units	% This Week					Measles/Rubella (100,000 pop.)	CRS (10,000 lb)
AND								
BOL	2657	...	100	95	71	79	1.8	0.0
COL	5146	96	83	98	89	94	9.0	4.2
ECU	2184	...	99	94	69	62	4.3	0.0
PER	7781	...	88	90	76	49	2.2	0.0
VEN	13092
BRA	15097	81	...	56	56	50	4.7	0.1
CAP								
CRI	57	...	64	88	90	93	0.9	28.8
GTM	1541	97	52	99	69	88	2.8	0.1
HND	470	91	74	98	85	98	2.5	3.2
NIC	185	...	96	98	95	95	3.9	6.1
PAN	324	...	82	91	63	89	1.6	0.5
SLV	1266	...	65	97	98	94	4.6	0.0
CAR								
CAR	766	95	88	97	15	74	3.9	12.0
LAC								
CUB	168	...	100	100	100	100	12.9	0.0
DOM	247	...	14	97	73	27	1.9	0.0
HTI	652	90	90	98	47	18	1.5	1.2
MEX	20487	96	97	99	93	84	3.1	0.0
NOA								
CAN
USA
SOC								
ARG	784	...	10	74	70	73	1.2	1.9
CHL	783	85	30	59	87	94	1.8	10.6
PRY	1182	98	84	99	88	95	10.5	0.3
URY	155	0	0	0	0	0	0.0	0.0
Total and Average*	75024	56	84	79	73	70	4.5	0.9

*Weighted

... No updated report received