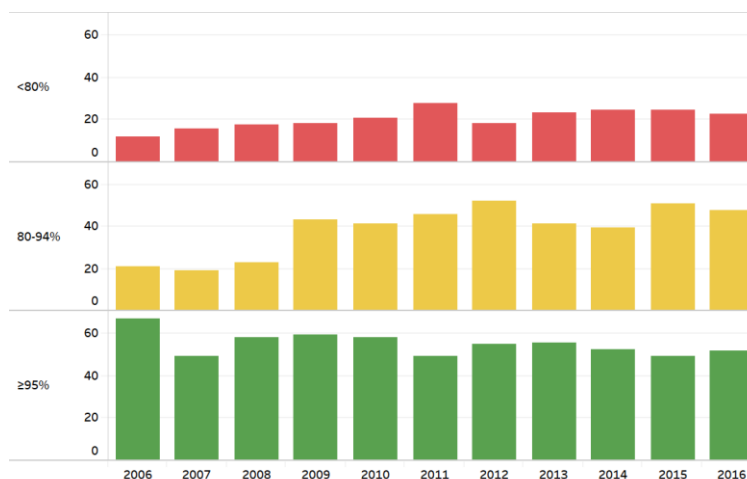


Measles/Rubella Weekly Bulletin



Proportion of municipalities with different MMR1 coverage levels in children 1 year* of age. Latin America and the Caribbean, 2006-2016

One of the challenges in sustaining measles and rubella elimination is achieving coverage that is homogeneous and $\geq 95\%$ in the 15,218 municipalities of Latin America and the Caribbean. During 2006-2016, the proportion of municipalities achieving coverage $\geq 95\%$ decreased significantly, from 67% in 2006 to 52% in 2016. Likewise, the proportion of municipalities with coverage between 80-94% presented a trend increase, from 21% in 2006 to 48% in 2016. A similar trend is observed in the proportion of municipalities with coverage $<80\%$, reporting an increase of 12% during the 10-year period.



Source: Country reports through the PAHO-WHO/UNICEF Joint Reporting Form (JRF).
*Haiti administered MR vaccine to children <12 months.

Table.1
Classification of Suspect Measles, Rubella, and Congenital Rubella Syndrome (CRS) Cases for the Period of Weeks 01-48, 2017

Subregion and Country	Susp. Cases 2017	Measles Confirmed 2017			Year/Week Last Conf. Measles case	Rubella Confirmed 2017			Year/Week Last Conf. Rubella Case	Diagnosis of Discarded Cases 2017		Congenital Rubella Syndrome			Year/Week Last Conf. CRS Case		
		Clin.	Lab.	Total		Clin.	Lab.	Total		Dengue	Others	Susp.	Conf.	CRS*			
AND	BOL	54	0	0	0	2000-40	0	0	0	2006-03	0	49	0	0	0	...	
	COL	1051	0	0	0	2015-35	0	0	0	2012-31	2	1036	401	0	0	2005/34	
	ECU	205	0	0	0	2016-14	0	0	0	2004-49	0	191	0	0	0	2004/49	
	PER	295	0	0	0	2015-25	0	0	0	2009-04	3	287	0	0	0	2007/16	
	VEN	487	0	70	70	2017-43	0	0	0	2007-51	3	391	37	0	0	...	
BRA	BRA	1525	0	0	0	2015-32	0	0	0	2014-40	0	1358	50	0	0	2009/34	
	CRI	92	0	0	0	2014-09	0	0	0	2001-39	0	82	166	0	0	...	
	GTM	85	0	0	0	1998-05	0	0	0	2006-31	2	112	2	0	0	2005/00	
	HND	141	0	0	0	1998-16	0	0	0	2004-11	0	136	32	0	0	2001/00	
	NIC	217	0	0	0	1994/14	0	0	0	2004-19	0	214	30	0	0	2005/00	
CAP	PAN	45	0	0	0	2011-20	0	0	0	2002-48	0	45	1	0	0	...	
	SLV	219	0	0	0	2001-19	0	0	0	2006-30	0	199	0	0	0	2001/00	
	CAR	163	0	0	0	2011/48	0	0	0	2008/18	0	156	66	0	0	1999/00	
	LAC	CUB	1398	0	0	0	1993/27	0	0	0	2004/06	0	1398	0	0	0	1989/10
	DOM	138	0	0	0	2011-18	0	0	0	2007-45	0	96	0	0	0	...	
MEX	HTI	146	0	0	0	2001-39	0	0	0	2006-21	0	125	21	0	0	...	
	MEX	3319	0	0	0	2015-02	0	1	1	2017-19	0	2781	0	0	0	...	
	NOA	CAN	46	0	45	45 ^a	2017/36	0	0	0	2016/06	2015/50
	USA	...	0	120	120 ^a	2017/40	0	3	3	2017/16	1	...	2017/00	
	SOC	ARG	304	0	3	3	2017-17	0	0	0	2014-22	1	202	119	0	0	2009/27
URY	CHL	164	0	0	0	2015-27	0	0	0	2011-25	0	153	118	0	0	...	
	PRY	469	0	0	0	1998-44	0	0	0	2005-21	1	462	4	0	0	2003/06	
	URY	0	0	0	0	1999/08	0	0	0	2001/37	0	0	0	0	0	...	
TOTAL	10563	0	238	238	--	0	4	4	--	11	9445	1047	1	0	--		

*Congenital Rubella Infection; (a) Provisional data.
...No report received



Measles/Rubella Surveillance

Table No.2

Infection Source of Measles and Rubella Confirmed Cases for the Period of Weeks 01-48, 2017

Subregion and Country		Measles				Rubella			
		I	IR	CAC	U	I	IR	CAC	U
AND	BOL								
	COL								
	ECU								
	PER								
	VEN	1	6	59	4				
BRA	BRA								
	CRI								
	GTM								
	HND								
	NIC								
CAP	PAN								
	SLV								
	CAR								
	LAC								
	DOM								
MEX	HTI								
	MEX					1			
NOA	CAN	8	33		5				
	USA	74	43		3	3			
SOC	ARG	1	2						
	CHL								
	PRY								
	URY								
TOTAL		84	84	59	12	4	0	0	0

I: Imported; IR: Import-related; CAC: Country-acquired case
U: Unknown.

Table No.3

Measles/Rubella Suspect Cases Under Investigation for the Period of Weeks 01-48, 2017

Country	Pending Cases 2016	Cumulative 2017	Week of Onset							% Pend. Cases
			1-43	44	45	46	47	48		
BOL	0	5	5	9	
COL	6	13	12	0	0	1	0	0	1	
ECU	9	14	14	7	
PER	1	5	3	0	0	0	1	1	2	
VEN	0	23	23	0	0	0	0	...	5	
BRA	0	166	101	9	9	20	18	9	11	
CRI	0	10	10	0	0	0	0	0	11	
GTM	3	56	56	66	
HND	0	5	5	0	0	0	0	0	4	
NIC	0	3	2	1	0	0	0	...	1	
PAN	0	0	0	0	0	0	0	...	0	
SLV	1	20	8	2	2	3	5	0	9	
CAR	0	7	5	1	0	0	0	1	4	
LAC	0	0	0	0	0	0	0	0	0	
DOM	2	42	42	0	0	30	
HTI	0	21	15	0	0	1	2	3	14	
MEX	0	537	471	16	15	10	13	12	16	
CAN	
USA	
ARG	0	98	86	6	2	1	2	1	32	
CHL	1	11	2	0	0	3	4	2	7	
PRY	0	6	3	0	3	0	0	0	1	
URY	0	0	0	0	
TOTAL		23	1042	863	35	31	39	45	29	10

... No report received

Table 4

Indicators of Integrated Measles/Rubella Surveillance for the Period of Weeks 01-48, 2017

Subregion and Country		Sites Reporting Weekly		% Cases with Adequate Investigation	% Cases with Adequate Sample	% Blood Samples Received in Lab. ≤5 days	% Lab. Results ≤4 days	Rate of Suspected Cases Last 52 weeks (2017/49-2017/48)	
		Total Units	% This Week					Measles/Rubella (100,000 pop.)	CRS (10,000 lb)
AND	BOL	3514	...	98	100	72	65	0.5	0.0
	COL	5231	97	80	97	87	95	2.3	13.0
	ECU	3208	...	96	100	83	86	1.3	0.0
	PER	7771	...	83	94	68	53	1.0	0.0
	VEN	13092	...	99	97	55	72	1.6	0.6
CAP	BRA	15521	80	62	56	56	53	0.7	0.2
	CRI	57	...	72	95	84	86	1.9	33.9
	GTM	1541	94	47	82	0.6	0.0
	HND	470	91	57	99	75	99	1.7	3.3
	NIC	185	...	88	100	94	89	3.6	6.7
LAC	PAN	348	...	87	100	84	93	1.3	0.1
	SLV	1264	91	67	94	98	92	3.7	0.0
	CAR	700	93	93	95	11	81	2.2	5.5
	LAC	168	...	100	100	100	100	13.4	0.0
	DOM	247	...	1	98	51	56	1.3	0.0
MEX	HTI	368	88	86	98	60	68	1.3	1.9
	MEX	20146	...	97	98	92	90	2.6	0.0
NOA	CAN
	USA
SOC	ARG	809	...	18	79	63	63	0.7	3.0
	CHL	783	87	32	79	83	97	0.9	9.8
	PRY	1159	94	80	99	89	96	7.5	0.3
	URY	335	...	0	0	0	0	0.0	0.0
Total and Average*		76917	28	83	91	81	83	1.8	1.5

*Weighted

... No report received