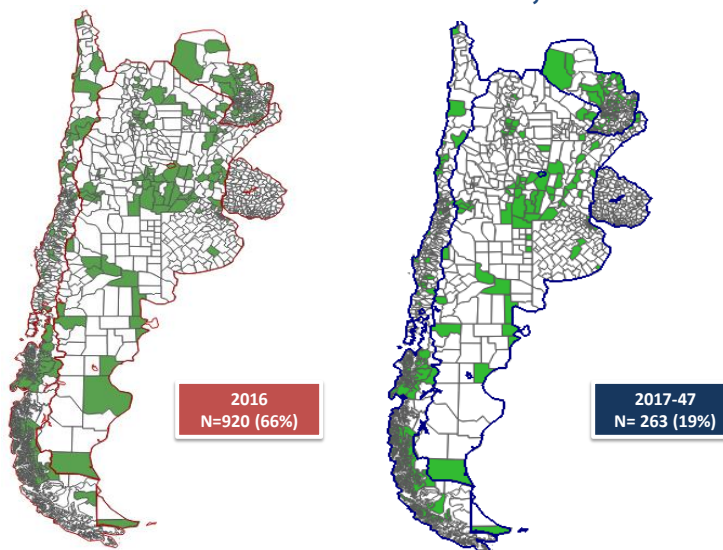


# Measles/Rubella Weekly Bulletin



## Municipalities reporting suspected cases of measles and rubella. Southern Cone, 2016 and 2017\*

Analyzing the municipalities reporting suspected measles and rubella cases helps expose those silent areas that have not reported data within one year. As of epidemiological week 47 of 2017, the percentage of municipalities reporting suspected cases in the Southern Cone only reaches 19%, compared to the 66% of municipalities that reported in 2016. Therefore, it is essential to strengthen the capacity for timely case detection at the local level, in order to maintain a high-quality surveillance system and rapid response to imported cases.



Source: Country reports through ISIS, MESS, DEF and Excel files to FGL-IM/PAHO (case by case data only).  
\*Data as of epidemiological week 47, 2017. The map only includes Argentina, Chile, Paraguay and Uruguay.

Table.1  
Classification of Suspect Measles, Rubella, and Congenital Rubella Syndrome (CRS) Cases for the Period of Weeks 01-47, 2017

Subregion and Country	Susp. Cases 2017	Measles Confirmed 2017			Year/Week Last Conf. Measles case	Rubella Confirmed 2017			Year/Week Last Conf. Rubella Case	Diagnosis of Discarded Cases 2017		Congenital Rubella Syndrome			Year/Week Last Conf. CRS Case		
		Clin.	Lab.	Total		Clin.	Lab.	Total		Dengue	Others	Susp.	Conf.	CRI*			
AND	BOL	54	0	0	0	2000-40	0	0	0	2006-03	0	49	0	0	0	...	
	COL	1026	0	0	0	2015-35	0	0	0	2012-31	1	1010	395	0	0	2005/34	
	ECU	205	0	0	0	2016-14	0	0	0	2004-49	0	191	0	0	0	2004/49	
	PER	294	0	0	0	2015-25	0	0	0	2009-04	3	287	0	0	0	2007/16	
	VEN	487	0	70	70	2017-43	0	0	0	2007-51	3	391	37	0	0	...	
BRA	BRA	1426	0	0	0	2015-32	0	0	0	2014-40	0	1285	48	0	0	2009/34	
	CAP	92	0	0	0	2014-09	0	0	0	2001-39	0	82	166	0	0	...	
	GTM	85	0	0	0	1998-05	0	0	0	2006-31	1	84	2	0	0	2005/00	
	HND	141	0	0	0	1998-16	0	0	0	2004-11	0	136	32	0	0	2001/00	
	NIC	217	0	0	0	1994/14	0	0	0	2004-19	0	214	30	0	0	2005/00	
CAR	PAN	45	0	0	0	2011-20	0	0	0	2002-48	0	45	1	0	0	...	
	SLV	200	0	0	0	2001-19	0	0	0	2006-30	0	184	0	0	0	2001/00	
	CAR	162	0	0	0	2011/48	0	0	0	2008/18	0	155	66	0	0	1999/00	
	LAC	CUB	1365	0	0	0	1993/27	0	0	0	2004/06	0	1365	0	0	0	1989/10
	DOM	138	0	0	0	2011-18	0	0	0	2007-45	0	96	0	0	0	...	
MEX	HTI	135	0	0	0	2001-39	0	0	0	2006-21	0	117	21	0	0	...	
	MEX	3255	0	0	0	2015-02	0	1	1	2017-19	0	2731	0	0	0	...	
	NOA	CAN	...	0	46	46 <sup>a</sup>	2017/36	0	0	0	2016/06	0	0	0	...	...	2015/50
	USA	...	0	120	120 <sup>a</sup>	2017/40	0	3	3	2017/16	0	0	0	1	...	...	2017/00
	SOC	ARG	297	0	3	3	2017-17	0	0	0	2014-22	1	192	116	0	0	2009/27
URY	CHL	161	0	0	0	2015-27	0	0	0	2011-25	0	148	118	0	0	...	
	PRY	462	0	0	0	1998-44	0	0	0	2005-21	1	456	4	0	0	2003/06	
	URY	0	0	0	0	1999/08	0	0	0	2001/37	0	0	0	0	0	...	
<b>TOTAL</b>	<b>10247</b>	<b>0</b>	<b>239</b>	<b>239</b>	<b>--</b>	<b>0</b>	<b>4</b>	<b>4</b>	<b>--</b>	<b>10</b>	<b>9218</b>	<b>1036</b>	<b>1</b>	<b>0</b>	<b>--</b>		

\*Congenital Rubella Infection; (a) Provisional data.  
...No report received



# Measles/Rubella Surveillance

**Table No.2**  
Infection Source of Measles and Rubella Confirmed Cases for the Period of Weeks 01-47, 2017

Subregion and Country		Measles				Rubella			
		I	IR	CAC	U	I	IR	CAC	U
AND	BOL								
	COL								
	ECU								
	PER								
	VEN	1	6	59	4				
BRA	BRA								
	CAP								
	CRI								
	GTM								
	HND								
CAR	NIC								
	PAN								
	SLV								
	CAR								
	LAC								
	CUB								
	DOM								
	HTI								
MEX	MEX				1				
NOA	CAN	8	33		5				
	USA	74	43		3	3			
SOC	ARG	1	2						
	CHL								
	PRY								
	URY								
<b>TOTAL</b>		<b>84</b>	<b>84</b>	<b>59</b>	<b>12</b>	<b>4</b>	<b>0</b>	<b>0</b>	<b>0</b>

I: Imported; IR: Import-related; CAC: Country-acquired case  
U: Unknown.

**Table No.3**  
Measles/Rubella Suspect Cases Under Investigation for the Period of Weeks 01-47, 2017

Country	Pending Cases 2016	Cumulative 2017	Week of Onset							% Pend. Cases
			1-42	43	44	45	46	47		
BOL	0	5	5	...	...	...	...	...	...	9
COL	8	15	14	1	0	0	0	0	0	1
ECU	9	14	14	...	...	...	...	...	...	7
PER	1	4	2	1	0	0	0	1	1	1
VEN	0	23	21	2	0	0	0	0	0	5
BRA	0	140	84	10	10	10	16	10	10	10
CRI	1	10	10	0	0	0	0	0	0	11
GTM	3	0	0	...	...	...	...	...	...	0
HND	0	5	5	0	0	0	0	0	0	4
NIC	0	3	2	0	1	0	0	0	0	1
PAN	0	0	0	0	0	0	0	0	0	0
SLV	1	16	12	0	1	1	1	1	1	8
CAR	0	7	5	0	1	0	0	1	1	4
LAC	0	0	0	0	0	0	0	0	0	0
	CUB	0	42	42	0	0	...	...	...	30
	DOM	2	18	15	0	0	2	1	0	13
MEX	MEX	0	523	461	11	16	14	12	9	16
NOA	CAN	...	...	...	...	...	...	...	...	...
	USA	...	...	...	...	...	...	...	...	...
SOC	ARG	0	101	91	3	6	1	0	0	34
	CHL	1	13	2	0	0	0	4	7	8
	PRY	0	5	3	0	0	2	0	0	1
	URY	0	0	0	...	...	...	...	...	0
<b>TOTAL</b>		<b>26</b>	<b>944</b>	<b>788</b>	<b>28</b>	<b>35</b>	<b>30</b>	<b>34</b>	<b>29</b>	<b>9</b>

... No report received

**Table 4**  
Indicators of Integrated Measles/Rubella Surveillance for the Period of Weeks 01-47, 2017

Subregion and Country		Sites Reporting Weekly		% Cases with Adequate Investigation	% Cases with Adequate Sample	% Blood Samples Received in Lab. ≤5 days	% Lab. Results ≤4 days	Rate of Suspected Cases Last 52 weeks (2017/48-2017/47)	
		Total Units	% This Week					Measles/Rubella (100,000 pop.)	CRS (10,000 lb)
AND	BOL	3514	...	98	100	72	65	0.5	0.0
	COL	5212	...	79	97	87	95	2.3	12.9
	ECU	3208	...	96	100	83	86	1.3	0.0
	PER	7771	68	83	94	69	53	1.0	0.0
	VEN	13092	...	99	97	55	72	1.7	0.6
CAP	BRA	14478	80	62	56	56	53	0.7	0.2
	CRI	57	...	72	95	84	86	1.9	33.9
	GTM	1541	...	...	94	47	82	0.6	0.0
	HND	470	91	57	99	75	99	1.7	3.3
	NIC	185	100	88	100	94	89	3.6	6.7
CAR	PAN	348	...	87	100	84	93	1.3	0.1
	SLV	1256	...	67	94	97	91	3.5	0.0
	CAR	700	84	93	94	12	79	2.2	5.5
	LAC	168	...	100	100	100	100	13.4	0.0
		DOM	247	...	1	98	51	56	1.3
MEX	HTI	368	90	86	98	60	70	1.3	1.9
	MEX	20146	...	97	98	92	91	2.6	0.0
NOA	CAN	...	...	...	...	...	...	...	...
	USA	...	...	...	...	...	...	...	...
SOC	ARG	809	...	16	79	63	64	0.7	3.0
	CHL	783	85	32	79	83	97	0.9	9.8
	PRY	1159	95	80	98	89	96	7.5	0.2
	URY	335	...	0	0	0	0	0.0	0.0
<b>Total and Average*</b>		<b>75847</b>	<b>27</b>	<b>83</b>	<b>91</b>	<b>81</b>	<b>83</b>	<b>1.8</b>	<b>1.5</b>

\*Weighted

... No report received