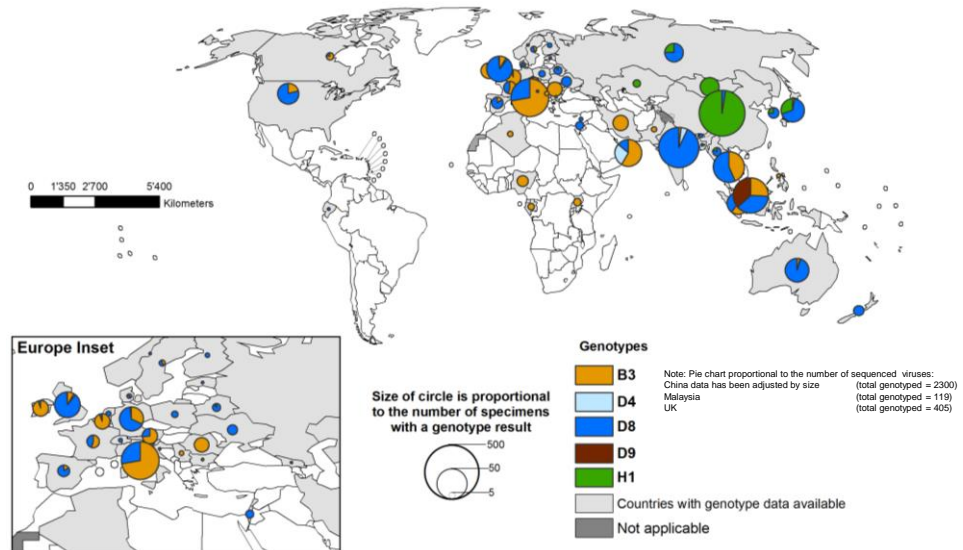


Measles/Rubella Weekly Bulletin



Distribution of measles genotypes
February 2016 to January 2017 (12M period)

The size of the circle is proportional to the number of sequences of the measles N gene reported to MeaNS. Genotypes B3, D4, D8, D9 and H1 were identified as circulating. The most frequent genotypes were H1, D8 and B3, respectively. The H1 genotype was mostly identified in India, Mongolia and Japan.



Data source: MeaNS database
Data in HQ as of 8 March 2017

The boundaries and names shown and the designations used on this map do not imply the expression of any opinion whatsoever on the part of the World Health Organization concerning the legal status of any country, territory, city or area or of its authorities, or concerning the delimitation of its frontiers or boundaries. Dotted lines on maps represent approximate border lines for which there may not yet be full agreement. ©WHO 2017. All rights reserved.



Table 1
Classification of Suspect Measles, Rubella, and Congenital Rubella Syndrome (CRS) Cases for the Period of Weeks 01-11, 2017

Subregion and Country	Susp. Cases 2017	Measles Confirmed 2017			Year/Week Last Conf. Measles case	Rubella Confirmed 2017			Year/Week Last Conf. Rubella Case	Diagnosis of Discarded Cases 2017		Congenital Rubella Syndrome			Year/Week Last Conf. CRS Case	
		Clin.	Lab.	Total		Clin.	Lab.	Total		Dengue	Others	Susp.	Conf.	CRI*		
AND	BOL	7	0	0	0	2000-40	0	0	0	2006-03	0	5	0	0	0	...
	COL	134	0	0	0	2015-35	0	0	0	2012-31	0	130	71	0	0	2005/34
	ECU	2016-14	2004-49	0	0	0	2011/14
	PER	57	0	0	0	2015-25	0	0	0	2009-04	1	51	0	0	0	2007/16
	VEN	73	0	0	0	2012-17	0	0	0	2015-52	0	67	2	0	0	...
BRA	BRA	222	0	0	0	2015-32	0	0	0	2014-40	0	162	10	0	0	2009/34
CAP	CRI	0	0	0	0	2014-09	0	0	0	2001-39	0	0	21	0	0	...
	GTM	14	0	0	0	1998-05	0	0	0	2006-31	0	13	2	0	0	2005/00
	HND	9	0	0	0	1998-16	0	0	0	2004-11	0	9	3	0	0	2001/00
	NIC	8	0	0	0	1994/14	2004-19	0	6	9	0	0	2005/00
	PAN	13	0	0	0	2011-20	0	0	0	2002-48	0	12	0	0	0	...
	SLV	27	0	0	0	2001-19	0	0	0	2006-30	0	18	0	0	0	2001/00
CAR	CAR	33	0	0	0	2011/48	0	0	0	2008/18	0	26	15	0	0	1999/00
LAC	CUB	0	0	0	0	1993/27	0	0	0	2004/06	0	0	0
	DOM	2	0	0	0	2011-18	0	0	0	2007-45	0	0	0	0	0	...
	HTI	16	0	0	0	2001-39	0	0	0	2006-21	0	7	2	0	0	...
MEX	MEX	604	0	0	0	2015-02	0	0	0	2001-25	0	467	0	0	0	...
NOA	CAN	10	10 ^a	2017/11	0	0	0	2016/06	2015/50
	USA	13	13 ^a	2017/04	2016/03	2015/00
SOC	ARG	32	0	0	0	2014-33	0	0	0	2014-22	0	18	18	0	0	2009/27
	CHL	35	0	0	0	2015-27	0	0	0	2011-25	0	32	0	0	0	...
	PRY	115	0	0	0	1998-44	0	0	0	2005-21	0	113	0	0	0	2003/06
	URY	1999/08	2001/37
TOTAL		1401	0	23	23	--	0	0	0	--	1	1136	153	0	0	--

*Congenital Rubella Infection; (a) Provisional data.

...No report received



Measles/Rubella Surveillance

Table No.2

Infection Source of Measles and Rubella Confirmed Cases for the Period of Weeks 01-11, 2017

Subregion and Country		Measles				Rubella			
		I	IR	CAC	U	I	IR	CAC	U
AND	BOL								
	COL								
	ECU								
	PER								
	VEN								
BRA	BRA								
	CAP								
	CRI								
	GTM								
	HND								
CAR	NIC								
	PAN								
	SLV								
	CAR								
	LAC								
MEX	CUB								
	DOM								
	HTI								
NOA	MEX				10				
	CAN				1				
SOC	USA	6	6						
	ARG								
	CHL								
	PRY								
	URY								
TOTAL		6	6	0	11	0	0	0	0

I: Imported; IR: Import-related; CAC: Country-acquired case
U: Unknown.

Table No.3

Measles/Rubella Suspect Cases Under Investigation for the Period of Weeks 01-11, 2017

Country	Pending Cases 2016	Cumulative 2017	Week of Onset							% Pend. Cases
			1-6	7	8	9	10	11		
BOL	0	2	0	0	0	2	0	0	29	
COL	13	4	3	0	0	1	0	...	3	
ECU	19	
PER	0	5	0	1	1	1	0	2	9	
VEN	2	6	5	0	0	0	1	0	8	
BRA	184	58	36	11	4	2	5	0	26	
CAP	CRI	0	0	0	0	0	0	...	0	
	GTM	3	1	1	0	0	0	0	7	
	HND	0	0	0	0	0	0	0	0	
	NIC	0	2	2	25	
	PAN	0	1	0	0	0	0	1	8	
	SLV	2	9	7	2	33	
	CAR	1	7	1	1	0	0	2	3	
	LAC	CUB	0	0	0	0	0	0	0	
	DOM	2	2	2	0	0	100	
	HTI	3	9	5	1	1	2	0	0	
MEX	MEX	107	137	57	11	15	16	19	19	
NOA	CAN	
	USA	
SOC	ARG	16	14	7	0	3	2	2	0	
	CHL	0	3	1	0	0	0	2	0	
	PRY	7	2	2	0	0	0	0	0	
	URY	0	
TOTAL		359	262	129	27	24	26	31	25	

... No report received

Table 4

Indicators of Integrated Measles/Rubella Surveillance for the Period of Weeks 01-11, 2017

Subregion and Country		Sites Reporting Weekly		% Cases with Adequate Investigation	% Cases with Adequate Sample	% Blood Samples Received in Lab. ≤5 days	% Lab. Results ≤4 days	Rate of Suspected Cases Last 52 weeks (2016/12-2017/11)		
		Total Units	% This Week					Measles/Rubella (100,000 pop.)	CRS (10,000 lb)	
AND	BOL	3514	...	86	100	71	57	0.8	0.0	
	COL	5180	...	71	98	89	98	2.6	8.4	
	ECU	3208	0.9	0.0	
	PER	7771	85	84	98	79	58	1.2	0.0	
	VEN	13092	...	99	99	68	67	2.0	0.2	
BRA	BRA	12629	78	0	84	84	66	0.8	0.2	
	CAP	CRI	57	...	0	0	0	0.6	12.3	
		GTM	1541	52	0	93	50	71	1.1	0.0
		HND	470	91	78	100	78	100	0.6	1.4
		NIC	185	...	100	100	100	100	1.8	4.9
CAR	PAN	345	73	77	100	92	92	1.3	0.0	
		SLV	1256	...	81	96	96	88	3.0	0.0
		CAR	700	82	88	94	13	72	5.3	2.6
		LAC	CUB	168	...	0	0	0	0.0	0.0
		DOM	247	...	0	100	0	0	0.4	0.0
MEX	HTI	368	70	88	100	81	88	0.5	1.1	
	MEX	20146	...	96	99	87	85	3.1	0.0	
NOA	CAN	
	USA	
SOC	ARG	809	...	19	72	74	65	0.7	1.7	
		CHL	778	86	31	77	96	93	1.2	4.7
		PRY	1136	87	73	100	96	96	5.4	0.0
		URY	335	0.0	0.0
Total and Average*		73767	28	85	95	84	82	1.7	0.9	

*Weighted

... No report received