

Measles/Rubella Weekly Bulletin



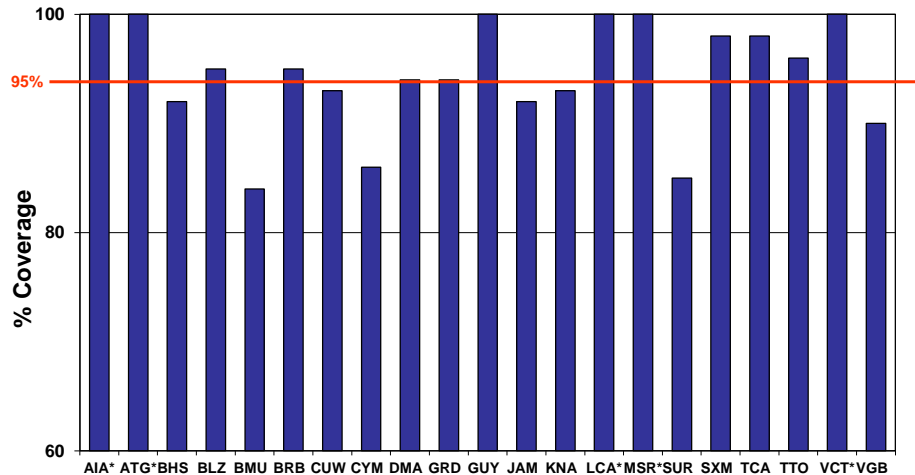
Comprehensive Family Immunization/Family, Gender and Life Course
Measles and Rubella Surveillance in the Americas



Vol. 21, No. 45

Week ending 14 November 2015

MMR1 reported coverage Non-Latin Caribbean, 2014



Source: Country reports through the PAHO-WHO/UNICEF Joint Reporting Form (JRF), 2015
* Coverage data > 100%.

Note: AIA-Anguilla; ATG-Antigua & Barbuda; BHS-Bahamas; BLZ-Belize; BMU-Bermuda; BRB-Barbados; CUW-Curaçao; CYM-Cayman Islands; DMA-Dominica; GRD-Grenada; GUY-Guyana; JAM-Jamaica; KNA-St. Kitts & Nevis; LCA-St. Lucia; MSR-Montserrat; SUR-Suriname; SXM-Sint Maarten; TCA-Turks & Caicos; TTO-Trinidad & Tobago; VCT-St. Vincent & the Grenadines; VGB-Virgin Islands (UK).

Table.1
Classification of Suspect Measles, Rubella, and Congenital Rubella Syndrome (CRS) Cases for the Period of Weeks 01-45, 2015

Subregion and Country	Susp. Cases 2015	Measles Confirmed 2015			Year/Week Last Conf. Measles case	Rubella Confirmed 2015			Year/Week Last Conf. Rubella Case	Diagnosis of Discarded Cases 2015		Congenital Rubella Syndrome			Year/Week Last Conf. CRS Case		
		Clin.	Lab.	Total		Clin.	Lab.	Total		Dengue	Others	Susp.	Conf.	CRI*			
AND	BOL	73	0	0	0	2000/40	0	0	0	2006/03	0	69	0	
	COL	1685	0	1	1	2015/36	0	0	0	2012/42	0	1607	430	0	0	2005/34	
	ECU	262	0	0	0	2012/28	0	0	0	2004/45	1	242	0	
	PER	545	0	4	4	2015/25	0	0	0	2006/45	0	460	0	0	0	2007/16	
BRA	VEN	530	0	0	0	2012/16	0	0	0	2007/51	17	513	3	0	0	...	
	BRA	5220	33	181	214	2015/32	0	0	0	2014/40	0	4782	1	0	...	2009/34	
	CRI	43	0	0	0	2005/22	0	0	0	2001/42	2	39	0	
	GTM	143	0	0	0	1998/05	0	0	0	2006/30	5	137	24	0	0	2005/00	
CAP	HND	189	0	0	0	1997/29	0	0	0	2004/11	1	188	9	0	0	2001/00	
	NIC	131	0	0	0	1994/14	0	0	0	2004/19	0	127	32	0	...	2005/00	
	PAN	64	0	0	0	2011/20	0	0	0	2002/48	0	64	1	0	0	...	
	SLV	170	0	0	0	2001/19	0	0	0	2006/30	0	153	0	0	0	2001/00	
CAR	CAR	243	0	0	0	2011/48	0	0	0	2008/18	1	230	7	0	0	1999/00	
	LAC	CUB	1228	0	0	0	1993/27	0	0	0	2004/06	0	1228	0	0	0	...
	DOM	39	0	0	0	2011/18	0	0	0	2006/44	0	38	0	
	GLP	1	0	0	0	2011/28	0	0	0	...	0	1	0	2005/00	
MEX	GUF	2	0	0	0	2011/26	0	0	0	2010/06	0	2	0	
	HTI	157	0	0	0	2001/39	0	0	0	2006/21	0	126	28	0	0	...	
	MTQ	0	0	0	0	2011/27	0	0	0	...	0	0	0	
	MEX	4094	0	1	1	2015/02	0	0	0	2012/49	0	3250	0	0	0	...	
NOA	CAN	196	196 ^a	2015/42	0	0	0	2014/10	2011/12	
	USA	189	189 ^a	2015/31	2014/16	2012/44	
SOC	ARG	340	0	0	0	2014/36	0	0	0	2014/22	2	234	104	0	0	2009/27	
	CHL	626	0	9	9	2015/27	0	0	0	2011/25	0	573	0	0	0	...	
	PRY	499	0	0	0	1998/44	0	0	0	2005/21	13	461	0	0	0	2003/06	
	URY	5	0	0	0	1999/08	0	0	0	2001/37	0	5	0	0	0	...	
TOTAL	16289	33	581	614	--	0	0	0	--	42	14259	639	0	0	--		

*Congenital Rubella Infection; (a) Provisional data.

...No report received



Measles/Rubella Surveillance

Table No.2
Infection Source of Measles and Rubella Confirmed Cases for the Period of Weeks 01-45, 2015

Subregion and Country		Measles				Rubella			
		I	IR	CAC	U	I	IR	CAC	U
AND	BOL	1							
	COL								
BRA	ECU								
	PER	1	3						
	VEN								
	BRA				214				
	CAP								
CAR	CRI								
	GTM								
	HND								
	NIC								
	PAN								
	SLV								
	LAC								
	CAR								
	CUB								
	DOM								
MEX	GLP								
	GUF								
	HTI								
	MTQ								
	MEX	1							
NOA	MEX	8	168		20				
	CAN	91	87		11				
SOC	USA								
	ARG								
	CHL	2	7						
	URY								
TOTAL		104	265	0	245	0	0	0	0

Table No.3
Measles/Rubella Suspect Cases Under Investigation for the Period of Weeks 01-45, 2015

Country	Pending Cases 2014	Cumulative 2015	Week of Onset						% Pend.Cases		
			1-40	41	42	43	44	45			
BOL	0	4	1	0	0	0	3	...	5		
COL	7	77	48	5	8	15	1	...	5		
ECU	...	19	19	0	0	0	0		
PER	0	80	63	3	9	3	2	0	15		
VEN	0	0	0	0	0	0	0	0	0		
BRA	431	226	162	18	17	15	14	...	4		
CAP	0	2	1	1	0	0	0	...	5		
CRI	0	1	1	0	0	0	0	...	1		
GTM	0	0	0	0	0	0	0	...	0		
HND	0	0	0	0	0	0	0	...	0		
NIC	0	4	4	0	3		
PAN	0	0	0	0	0	0	0	...	2		
SLV	2	17	15	1	1	0	0	...	10		
LAC	0	12	1	2	3	1	5	0	5		
CAR	0	0	0	0	0	0	0	0	0		
CUB	13	1	1	0	0	0	3		
DOM	0	0	0	0	0	0	0	0	0		
GLP	0	0	0	0	0	0	0	0	0		
GUF	0	0	0	0	0	0	0	0	0		
HTI	0	31	26	1	2	2	0	...	20		
MTQ	0	0	0	0	0	0	0	0	0		
MEX	0	9	7	0	0	0	2	...	0		
NOA											
CAN		
USA		
SOC											
ARG	0	104	88	7	7	1	1	...	31		
CHL	0	44	30	1	0	4	2	7	7		
PRY	0	25	24	0	1	0	0	0	5		
URY	0	0	0	0	0		
TOTAL			453	656	491	39	48	41	30	7	4

I: Imported; IR: Import-related; CAC: Country-acquired case
U: Unknown.

... No report received

Table 4
Indicators of Integrated Measles/Rubella Surveillance for the Period of Weeks 01-45, 2015

Subregion and Country		Sites Reporting Weekly		% Cases with Adequate Investigation	% Cases with Adequate Sample	% Blood Samples Received in Lab. ≤5 days	% Lab. Results ≤4 days	Rate of Suspected Cases Last 52 weeks (2014/47-2015/45)		
		Total Units	% This Week					Measles/Rubella (100,000 pop.)	CRS (10,000 lb)	
AND	BOL	3459	...	100	100	84	82	0.9	0.0	
	COL	5472	...	78	95	89	98	4.3	4.8	
	ECU	2184	...	52	95	92	60	1.9	0.0	
	PER	7314	...	86	94	71	49	2.1	0.0	
	VEN	13092	...	92	99	72	62	1.9	0.1	
CAP	BRA	14485	76	0	73	73	53	2.7	0.3	
	CRI	57	...	56	86	76	71	1.0	0.0	
	GTM	1506	...	1	97	62	77	1.0	0.5	
	HND	469	91	32	100	71	46	4.2	0.5	
	NIC	185	...	95	100	90	93	2.5	2.3	
CAR	PAN	224	88	34	100	76	97	2.1	0.1	
	SLV	65	92	85	94	2.9	3.8	
	LAC	CAR	714	39	98	92	16	74	3.6	1.4
	CUB	168	100	100	100	100	100	12.3	0.0	
	DOM	247	...	3	92	46	46	0.4	0.0	
MEX	GLP	0.2	0.0	
	GUF	0.9	0.0	
	HTI	191	94	92	96	75	75	1.7	1.1	
	MTQ	0.0	0.0	
	MEX	95	95	90	81	8.2	0.0	
NOA	CAN	
	USA	
	SOC	ARG	784	...	23	91	70	43	1.0	1.5
	CHL	817	89	39	87	95	95	3.9	0.0	
SOC	PRY	1033	88	66	83	91	91	8.3	0.3	
	URY	155	...	80	100	100	60	0.2	0.0	
Total and Average*		52556	78	82	88	82	73	3.8	1.1	

*Weighted