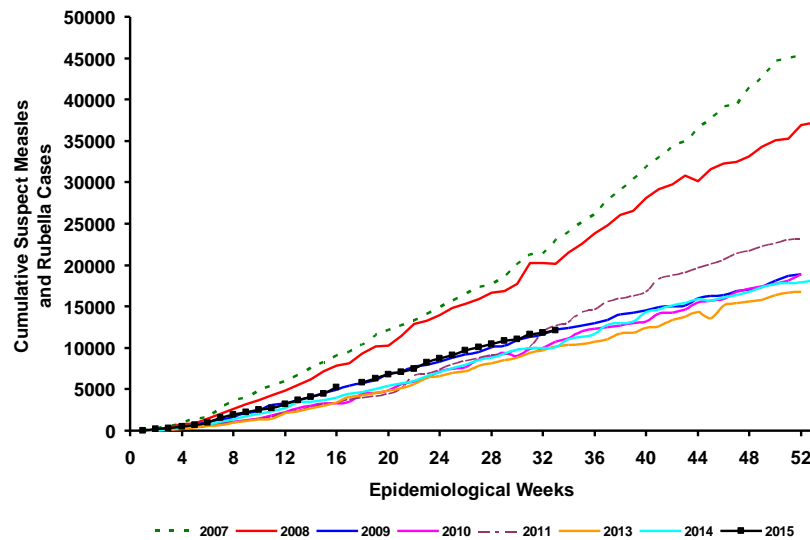


# Measles/Rubella Weekly Bulletin



Cumulative suspected measles and rubella cases by epidemiological week, the Americas, 2007-2015\*



Source: ISIS, MESS and country reports

\* Data as of week 33, 2015.

Table.1  
Classification of Suspect Measles, Rubella, and Congenital Rubella Syndrome (CRS) Cases for the Period of Weeks 01-33, 2015

Subregion and Country	Susp. Cases 2015	Measles Confirmed 2015			Year/Week Last Conf. Measles case	Rubella Confirmed 2015			Year/Week Last Conf. Rubella Case	Diagnosis of Discarded Cases 2015		Congenital Rubella Syndrome			Year/Week Last Conf. CRS Case		
		Clin.	Lab.	Total		Clin.	Lab.	Total		Dengue	Others	Susp.	Conf.	CR1*			
AND	BOL	48	0	0	0	2000/40	0	0	0	2006/03	0	46	0	...	...	...	
	COL	1055	0	0	0	2013/25	0	0	0	2012/42	0	999	298	0	0	2005/34	
	ECU	...	...	...	...	2012/28	...	...	...	2004/45	...	...	...	...	...	...	
	PER	402	0	4	4	2015/25	0	0	0	2006/45	0	293	0	0	0	2007/16	
BRA	VEN	333	0	0	0	2012/16	0	0	0	2007/51	6	323	2	0	0	...	
	BRA	3964	10	146	156	2015/23	0	0	0	2014/40	0	3391	60	0	...	2009/34	
	CRI	31	0	0	0	2005/22	0	0	0	2001/42	2	25	0	...	...	...	
	GTM	113	0	0	0	1998/05	0	0	0	2006/30	5	107	7	0	0	2005/00	
CAP	HND	180	0	0	0	1997/29	0	0	0	2004/11	0	179	7	0	0	2001/00	
	NIC	98	0	0	0	1994/14	0	0	0	2004/19	0	86	22	0	...	2005/00	
	PAN	52	0	0	0	2011/20	0	0	0	2002/48	0	49	1	0	0	...	
	SLV	120	0	0	0	2001/19	0	0	0	2006/30	0	102	0	0	0	2001/00	
CAR	CAR	190	0	0	0	2011/48	0	0	0	2008/18	1	188	7	0	0	1999/00	
	LAC	CUB	1090	0	0	0	1993/27	0	0	0	2004/06	0	1090	0	0	0	...
	DOM	29	0	0	0	2011/18	0	0	0	2006/44	0	19	0	...	...	...	
	GLP	1	0	0	0	2011/28	0	0	0	...	0	1	0	...	...	2005/00	
MEX	GUF	1	0	0	0	2011/26	0	0	0	2010/06	0	1	0	...	...	...	
	HTI	118	0	0	0	2001/39	0	0	0	2006/21	0	106	16	0	0	...	
	MTQ	0	0	0	0	2011/27	0	0	0	...	0	0	0	...	...	...	
	PRI	...	...	...	...	...	...	...	...	...	...	...	...	...	...	...	
NOA	MEX	3169	0	1	1	2015/02	0	0	0	2012/49	0	2519	0	0	0	...	
	CAN	...	...	195	195 <sup>a</sup>	2015/19	0	0	0	2014/10	...	...	...	...	...	2011/12	
SOC	USA	...	...	186	186 <sup>a</sup>	2015/28	...	...	...	2014/16	...	...	...	...	...	2012/44	
	ARG	232	0	0	0	2014/36	0	0	0	2014/22	2	123	66	0	0	2009/27	
	CHL	487	0	9	9	2015/27	0	0	0	2011/25	0	454	0	0	0	...	
	PRY	370	0	0	0	1998/44	0	0	0	2005/21	2	287	0	0	0	2003/06	
URY	4	0	0	0	1999/08	0	0	0	2001/37	0	4	0	0	0	...		
<b>TOTAL</b>	<b>12087</b>	<b>10</b>	<b>541</b>	<b>551</b>	<b>--</b>	<b>0</b>	<b>0</b>	<b>0</b>	<b>--</b>	<b>18</b>	<b>10392</b>	<b>486</b>	<b>0</b>	<b>0</b>	<b>0</b>	<b>--</b>	

\*Congenital Rubella Infection; (a) Provisional data.

...No report received



# Measles/Rubella Surveillance

**Table No.2**  
Infection Source of Measles and Rubella Confirmed Cases for  
the Period of Weeks 01-33, 2015

Subregion and Country	Measles				Rubella			
	I	IR	CAC	U	I	IR	CAC	U
AND								
BOL								
COL								
ECU								
PER	1	3						
VEN								
BRA				156				
CAP								
CRI								
GTM								
HND								
NIC								
PAN								
SLV								
CAR								
LAC								
CUB								
DOM								
GLP								
GUF								
HTI								
MTQ								
PRI								
MEX	1							
NOA	7	168		20				
CAN	88	87		11				
USA								
SOC								
ARG								
CHL	2	7						
PRY								
URY								
<b>TOTAL</b>	<b>99</b>	<b>265</b>	<b>0</b>	<b>187</b>	<b>0</b>	<b>0</b>	<b>0</b>	<b>0</b>

**Table No.3**  
Measles/Rubella Suspect Cases Under Investigation  
for the Period of Weeks 01-33, 2015

Country	Pending Cases 2014	Cumulative 2015	Week of Onset							% Pend.Cases
			1-28	29	30	31	32	33		
BOL	0	2	1	1	0	0	...	...	4	
COL	8	56	51	2	2	1	...	...	5	
ECU	...	...	...	...	...	...	...	...	...	
PER	0	105	75	7	6	6	6	5	26	
VEN	0	4	4	0	0	0	0	0	1	
BRA	431	417	371	15	12	19	0	0	11	
CRI	0	4	3	0	1	0	0	...	13	
GTM	2	1	1	0	0	0	0	0	1	
HND	0	1	1	0	0	0	0	0	1	
NIC	0	12	11	0	1	0	...	...	12	
PAN	0	3	0	0	0	1	2	0	6	
SLV	2	18	14	4	0	0	...	...	15	
CAR	0	1	0	0	0	0	1	0	1	
LAC	0	0	0	0	0	0	0	0	0	
CUB	0	0	0	0	0	0	0	0	0	
DOM	13	10	10	0	0	0	0	...	34	
GLP	0	0	0	0	0	0	...	...	0	
GUF	0	0	0	0	0	0	...	...	0	
HTI	0	12	4	0	4	4	0	0	10	
MTQ	0	0	0	0	0	0	...	...	0	
PRI	...	...	...	...	...	...	...	...	...	
MEX	0	17	17	0	0	0	0	0	1	
CAN	...	...	...	...	...	...	...	...	...	
USA	...	...	...	...	...	...	...	...	...	
ARG	0	107	79	7	3	8	7	3	46	
CHL	0	24	19	1	1	0	1	2	5	
PRY	0	81	81	0	0	0	0	0	22	
URY	0	0	0	0	0	0	...	...	0	
<b>TOTAL</b>	<b>456</b>	<b>875</b>	<b>742</b>	<b>37</b>	<b>30</b>	<b>39</b>	<b>17</b>	<b>10</b>	<b>7</b>	

I: Imported; IR: Import-related; CAC: Country-acquired case  
U: Unknown.

... No report received

**Table 4**  
Indicators of Integrated Measles/Rubella Surveillance for the Period of Weeks 01-33, 2015

Subregion and Country	Sites Reporting Weekly		% Cases with Adequate Investigation	% Cases with Adequate Sample	% Blood Samples Received in Lab. ≤5 days	% Lab. Results ≤4 days	Rate of Suspected Cases Last 52 weeks (2014/35-2015/33)		
	Total Units	% This Week					Measles/Rubella (100,000 pop.)	CRS (10,000 lb)	
AND	BOL	2220	...	100	100	89	78	1.0	0.0
	COL	5512	...	77	96	90	96	4.7	3.3
	ECU	2184	...	...	...	...	...	...	...
	PER	7314	...	87	93	70	54	1.9	0.0
	VEN	13092	...	96	99	73	63	1.7	0.0
...	BRA	8473	82	...	73	73	42	2.0	0.2
CAP	CRI	57	...	61	97	81	68	0.9	0.0
	GTM	1506	84	1	96	61	76	1.2	0.2
	HND	469	88	31	100	73	42	5.4	0.4
	NIC	185	...	94	100	89	94	2.8	1.6
	PAN	224	74	37	100	74	96	2.5	0.1
	SLV	...	...	69	93	89	96	3.5	3.8
CAR	CAR	714	98	43	94	17	73	5.7	1.4
LAC	CUB	168	100	100	100	100	100	14.2	0.0
	DOM	247	48	...	90	36	28	0.4	0.0
	GLP	...	...	...	...	...	...	0.2	0.0
	GUF	...	...	...	...	...	...	0.4	0.0
	HTI	191	91	94	96	80	79	1.5	0.6
	MTQ	...	...	...	...	...	...	0.0	0.0
	PRI	...	...	...	...	...	...	...	...
MEX	MEX	...	...	93	93	90	81	7.4	0.0
NOA	CAN	...	...	...	...	...	...	...	...
	USA	...	...	...	...	...	...	...	...
SOC	ARG	779	...	18	87	73	43	1.1	1.0
	CHL	817	90	41	91	96	96	3.6	0.0
	PRY	999	91	61	74	92	89	7.5	0.3
	URY	155	...	75	100	100	75	0.2	0.0
<b>Total and Average*</b>		<b>45306</b>	<b>83</b>	<b>80</b>	<b>87</b>	<b>82</b>	<b>69</b>	<b>3.6</b>	<b>0.8</b>

\*Weighted