

Measles/Rubella Weekly Bulletin



Within the framework of Vaccination Week in the Americas, the First Lady of Dominican Republic, Candida Montilla de Medina y and the Minister of Health, Altagracia Guzmán Marcelino, launched the national vaccination campaign against measles and rubella in the country. The campaign will target around 778,000 children less than 5 years old throughout the entire country.

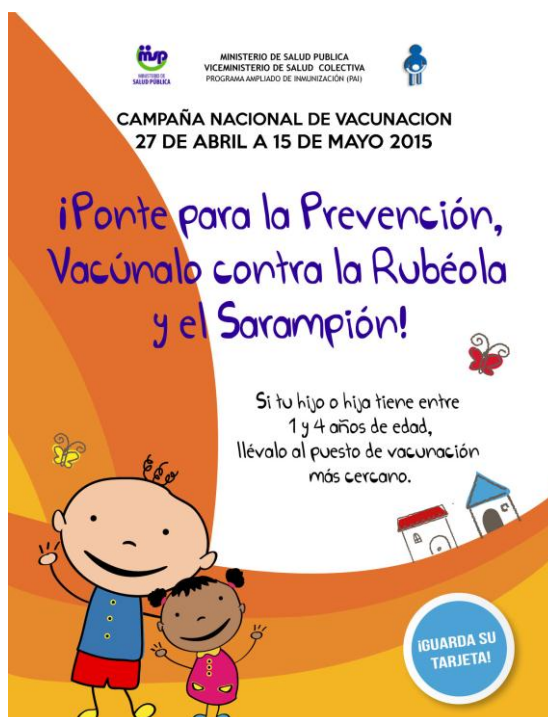


Table.1
Classification of Suspect Measles, Rubella, and Congenital Rubella Syndrome (CRS) Cases for the Period of Weeks 01-15, 2015

Subregion and Country	Susp. Cases 2015	Measles Confirmed 2015			Year/Week Last Conf. Measles case	Rubella Confirmed 2015			Year/Week Last Conf. Rubella Case	Diagnosis of Discarded Cases 2015		Congenital Rubella Syndrome			Year/Week Last Conf. CRS Case		
		Clin.	Lab.	Total		Clin.	Lab.	Total		Dengue	Others	Susp.	Conf.	CRI*			
AND	BOL	23	0	0	0	2000/40	0	0	0	2006/03	0	21	0	
	COL	367	0	0	0	2013/25	0	0	0	2012/42	0	315	122	0	0	2005/34	
	ECU	0	2012/28	2004/45	0	0	0	
	PER	93	0	0	0	2008/18	0	0	0	2006/45	0	71	0	0	0	2007/16	
BRA	VEN	94	0	0	0	2012/16	0	0	0	2007/51	4	89	1	0	0	...	
	BRA	1729	10	85	95	2015/13	0	0	0	2014/40	0	1179	7	0	...	2009/34	
	CAP	CRI	7	0	0	0	2005/22	0	0	0	2001/42	1	4	0	
	GTM	29	0	0	0	1998/05	0	0	0	2006/30	1	27	0	0	0	2005/00	
	HND	149	0	0	0	1997/29	0	0	0	2004/11	0	148	3	0	0	2001/00	
	NIC	68	0	0	0	1994/14	0	0	0	2004/19	0	65	5	0	...	2005/00	
	PAN	25	0	0	0	2011/20	0	0	0	2002/48	0	22	0	0	0	...	
	SLV	38	0	0	0	2001/19	0	0	0	2006/30	0	31	0	0	0	2001/00	
CAR	CAR	95	0	0	0	2011/48	0	0	0	2008/18	1	87	7	0	0	1999/00	
	LAC	CUB	246	0	0	0	1993/27	0	0	0	2004/06	0	0	0	0	0	...
	DOM	1	0	0	0	2011/18	0	0	0	2006/44	0	1	0	
	GLP	1	0	0	0	2011/28	0	0	0	...	0	1	2005/00	
	GUF	1	0	0	0	2011/26	0	0	0	2010/06	0	1	
	HTI	41	0	0	0	2001/39	0	0	0	2006/21	0	36	3	0	0	...	
	MTQ	0	0	0	0	2011/27	0	0	0	...	0	0	
	PRI	
MEX	MEX	1214	0	1	1	2015/02	0	0	0	2012/49	0	934	0	0	0	...	
	NOA	CAN	193	193 ^a	2015/15	0	0	0	2014/10	2011/12
	USA	162	162 ^a	2015/11	2014/16	2012/44	
SOC	ARG	26	0	0	0	2014/36	0	0	0	2014/22	0	23	6	0	0	2009/27	
	CHL	52	0	0	0	2011/25	0	0	0	2011/25	0	45	0	0	0	...	
	PRY	177	0	0	0	1998/44	0	0	0	2005/21	0	117	0	0	0	2003/06	
	URY	1	0	0	0	1999/08	0	0	0	2001/37	0	1	0	0	0	...	
	TOTAL	4477	10	441	451	--	0	0	0	--	7	3218	154	0	0	--	

*Congenital Rubella Infection; (a) Provisional data.

...No report received



Measles/Rubella Surveillance

Table No.2
Infection Source of Measles and Rubella Confirmed Cases for the Period of Weeks 01-15, 2015

Subregion and Country	Measles				Rubella			
	I	IR	CAC	U	I	IR	CAC	U
AND								
BOL								
COL								
ECU								
PER								
VEN				95				
BRA								
CAP								
CRI								
GTM								
HND								
NIC								
PAN								
SLV								
CAR								
LAC								
CUB								
DOM								
GLP								
GLP								
GUF								
GUF								
HTI								
HTI								
MTQ								
MTQ								
PRI								
PRI								
MEX	1							
NOA	6	168		19				
NOA	74	83		5				
SOC								
ARG								
CHL								
PRY								
URY								
TOTAL	81	251	0	119	0	0	0	0

Table No.3
Measles/Rubella Suspect Cases Under Investigation for the Period of Weeks 01-15, 2015

Country	Pending Cases 2014	Cumulative 2015	Week of Onset							% Pend.Cases
			1-10	11	12	13	14	15		
BOL	0	2	2	0	0	0	9	
COL	45	52	41	9	2	0	14	
ECU	
PER	0	22	8	3	4	3	0	4	24	
VEN	0	1	1	0	0	0	0	0	1	
BRA	431	455	0	0	0	0	455	0	26	
CRI	0	2	2	29	
GTM	2	1	0	0	0	1	0	0	3	
HND	0	1	1	0	0	0	0	0	1	
NIC	0	3	1	0	2	0	0	...	4	
PAN	5	3	0	1	0	0	0	2	12	
SLV	2	7	5	1	1	0	0	...	18	
CAR	1	7	4	1	1	1	0	0	7	
LAC	0	246	172	0	33	0	41	...	100	
CUB	0	0	0	0	
DOM	0	0	0	0	0	0	0	
GLP	0	0	0	0	0	0	0	
GLP	0	0	0	0	0	0	0	
GUF	0	0	0	0	0	0	0	
GUF	0	5	4	0	0	1	0	0	12	
HTI	0	0	0	0	0	0	0	
MTQ	0	0	0	0	0	0	0	
PRI	
PRI	0	8	8	0	0	0	0	0	1	
MEX	
CAN	
CAN	
USA	
USA	18	3	2	0	0	0	1	0	12	
ARG	0	7	1	2	1	2	1	0	13	
CHL	2	60	40	8	1	3	5	3	34	
PRY	0	0	0	0	0	0	
URY	
TOTAL	506	885	292	25	45	11	503	9	20	

I: Imported; IR: Import-related; CAC: Country-acquired case
U: Unknown.

... No report received

Table 4
Indicators of Integrated Measles/Rubella Surveillance for the Period of Weeks 01-15, 2015

Subregion and Country	Sites Reporting Weekly		% Cases with Adequate Investigation	% Cases with Adequate Sample	% Blood Samples Received in Lab. ≤5 days	% Lab. Results ≤4 days	Rate of Suspected Cases Last 52 weeks (2014/17-2015/15)		
	Total Units	% This Week					Measles/Rubella (100,000 pop.)	CRS (10,000 lb)	
AND	BOL	3195	...	100	100	91	77	1.3	0.0
	COL	5504	...	77	90	94	96	5.5	0.9
	ECU	2184	0.0	...
	PER	7314	...	81	88	67	42	1.3	0.0
	VEN	13092	...	95	99	75	58	2.0	0.1
BRA	BRA	11382	97	...	72	72	55	3.1	0.3
CAP	CRI	57	...	86	100	86	86	0.9	0.0
	GTM	1506	100	3	93	54	86	1.4	0.1
	HND	469	91	23	100	73	34	5.5	0.6
	NIC	185	...	96	99	86	91	2.5	1.6
	PAN	223	81	52	100	88	88	4.1	0.3
	SLV	74	92	94	91	4.7	0.0
CAR	CAR	714	79	45	87	22	62	6.2	3.8
LAC	CUB	150	100	100	100	100	100	10.3	0.0
	DOM	247	100	0.1	0.0
	GLP	0.2	...
	GLP	0.4	...
	GUF	0.4	...
	HTI	191	97	98	98	78	81	1.1	0.1
	MTQ	0.2	...
	PRI	0.0	...
MEX	MEX	98	96	91	89	4.2	0.0
NOA	CAN
NOA	USA
SOC	ARG	779	...	23	88	78	48	0.8	1.7
	CHL	806	...	38	92	86	90	1.6	1.9
	PRY	999	89	45	66	96	93	5.5	0.3
	URY	155	...	100	100	100	100	0.3	0.0
Total and Average*		49152	96	82	85	81	73	3.1	0.7

*Weighted