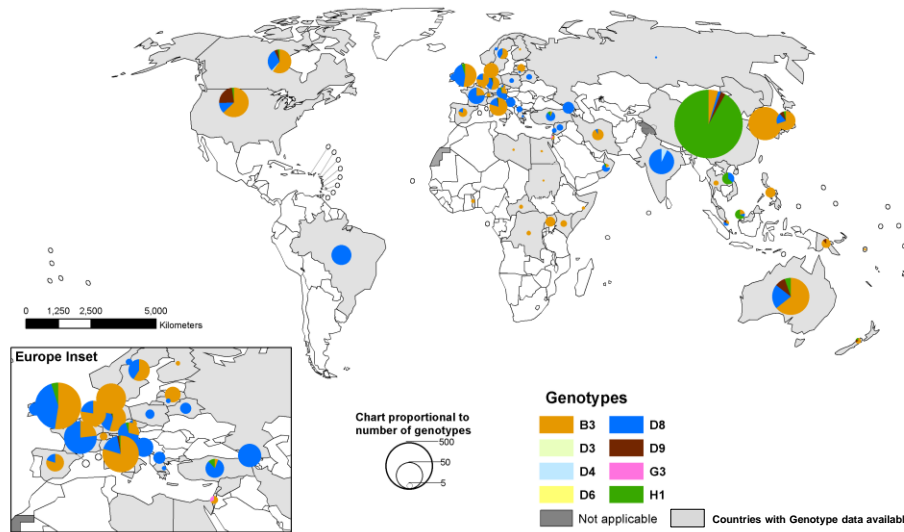


Measles/Rubella Weekly Bulletin



Distribution of measles genotypes from Dec-2013 to Nov-2014 (12M period)



Data source: MeaNS Database; 20 January 2015
Updated on 20 January 2015

The boundaries and names shown and the designations used on this map do not imply the expression of any opinion whatsoever on the part of the World Health Organization concerning the legal status of any country, territory, city or area or of its authorities, or concerning the delimitation of its frontiers or boundaries. Dotted lines on maps represent approximate border lines for which there may not yet be full agreement. ©WHO 2014. All rights reserved.



Table.1

Classification of Suspect Measles, Rubella, and Congenital Rubella Syndrome (CRS) Cases for the Period of Weeks 01-04, 2015

Subregion and Country	Susp. Cases 2015	Measles Confirmed 2015			Year/Week Last Conf. Measles case	Rubella Confirmed 2015			Year/Week Last Conf. Rubella Case	Diagnosis of Discarded Cases 2015		Congenital Rubella Syndrome			Year/Week Last Conf. CRS Case	
		Clin.	Lab.	Total		Clin.	Lab.	Total		Dengue	Others	Susp.	Conf.	CRI*		
AND	BOL	2000/40	2006/03
	COL	18	0	0	0	2013/25	0	0	0	2012/42	0	14	27	0	0	2005/34
	ECU	2012/28	2004/45
	PER	14	0	0	0	2008/18	0	0	0	2006/45	0	9	0	0	0	2007/16
	VEN	0	0	0	0	2012/16	0	0	0	2007/51	0	0	0	0	0	...
BRA	BRA	176	0	21	21	2015/03	0	0	0	2014/40	0	81	0	2009/34
CAP	CRI	2005/22	2001/42
	GTM	0	0	0	0	1998/05	0	0	0	2006/30	0	0	0	0	0	2005/00
	HND	54	0	0	0	1997/29	0	0	0	2004/11	0	0	1	0	0	2001/00
	NIC	2	0	0	0	1994/14	0	0	0	2004/19	0	1	0	0	...	2005/00
	PAN	7	0	0	0	2011/20	0	0	0	2002/48	0	7	0	0	0	...
	SLV	2	0	0	0	2001/19	0	0	0	2006/30	0	0	0	0	0	2001/00
CAR	CAR	4	0	0	0	2011/48	0	0	0	2008/18	0	3	0	0	0	1999/00
LAC	CUB	1	0	0	0	1993/27	0	0	0	2004/06	0	0	0	0	0	...
	DOM	0	0	0	0	2011/18	0	0	0	2006/44	0	0	0
	GLP	0	0	0	0	2011/28	0	0	0	...	0	0	0	0	0	2005/00
	GUF	0	0	0	0	2011/26	0	0	0	2010/06	0	0	0	0	0	...
	HTI	4	0	0	0	2001/39	0	0	0	2006/21	0	4	0	0	0	...
	MTQ	0	0	0	0	2011/27	0	0	0	...	0	0	0	0	0	...
	PRI
MEX	MEX	138	0	1	1	2015/02	0	0	0	2012/49	0	111	0	0	0	...
NOA	CAN	...	0	4	4	2015/04	0	0	0	2014/10	2011/12
	USA	102	102 ^a	2015/04	2014/16	2012/44
SOC	ARG	0	0	0	0	2014/36	0	0	0	2014/22	0	0	0	0	0	2009/27
	CHL	15	0	0	0	2011/25	0	0	0	2011/25	0	0	0	0	0	...
	PRY	18	0	0	0	1998/44	0	0	0	2005/21	0	14	0	0	0	2003/06
	URY	1999/08	2001/37
TOTAL		453	0	128	128	--	0	0	0	--	0	244	28	0	0	--

*Congenital Rubella Infection; (a) Provisional data.

...No report received



Measles/Rubella Surveillance

Table No.2
Infection Source of Measles and Rubella Confirmed Cases for the Period of Weeks 01-04, 2015

Subregion and Country	Measles				Rubella			
	I	IR	CAC	U	I	IR	CAC	U
AND								
BOL								
COL								
ECU								
PER								
VEN				21				
BRA								
CAP								
CRI								
GTM								
HND								
NIC								
PAN								
SLV								
CAR								
LAC								
CUB								
DOM								
GLP								
GUF								
HTI								
MTQ								
PRI								
MEX	1							
NOA					4			
CAN				102				
USA								
SOC								
ARG								
CHL								
PRY								
URY								
TOTAL	1	0	0	127	0	0	0	0

Table No.3
Measles/Rubella Suspect Cases Under Investigation for the Period of Weeks 01-04, 2015

Country	Pending Cases 2014	Cumulative 2015	Week of Onset				
			1	2	3	4	% Pend.Cases
BOL	4	0
COL	99	4	2	0	2	0	22
ECU
PER	32	5	0	1	3	1	36
VEN	37	0	0	0	0	0	0
BRA	431	74	0	0	0	74	42
CRI	4	0
GTM	2	0	0	0	0	0	0
HND	95	54	30	24	0	0	100
NIC	0	1	1	0	0	0	50
PAN	5	0	0	0	0	0	0
SLV	0	0	0	0	0	0	0
CAR	0	1	0	1	0	0	25
LAC	0	1	0	1	0	0	100
CUB	0	0	0	0	0	0	0
DOM	13	0	0	0	0	0	0
GLP	0	0	0	0	0	0	0
GUF	0	0	0	0	0	0	0
HTI	0	0	0	0	0	0	0
MTQ	0	0	0	0	0	0	0
PRI
MEX	0	26	0	11	9	6	19
CAN
USA
ARG	2	0	0	0	0	0	0
CHL	23	0	0	0	0	0	0
PRY	2	4	3	1	0	0	22
URY	0	0
TOTAL	749	170	36	39	14	81	39

I: Imported; IR: Import-related; CAC: Country-acquired case
U: Unknown.

... No report received

Table 4.
Indicators of Integrated Measles/Rubella Surveillance for the Period of Weeks 01-04, 2015

Subregion and Country	Sites Reporting Weekly		% Cases with Adequate Investigation	% Cases with Adequate Sample	% Blood Samples Received in Lab. ≤5 days	% Lab. Results ≤4 days	Rate of Suspected Cases Last 52 weeks (2014/06-2015/04)		
	Total Units	% This Week					Measles/Rubella (100,000 pop.)	CRS (10,000 lb)	
AND	BOL	3051	1.5	0.0	
	COL	5510	...	83	78	100	5.1	4.4	
	ECU	2184	
	PER	7314	...	93	79	73	45	1.3	
	VEN	13092	1.8	0.1	
BRA	BRA	12267	79	...	52	52	56	2.8	
CAP	CRI	57	0.8	
	GTM	1506	66	1.7	
	HND	469	90	20	100	71	58	3.2	
	NIC	185	0	100	100	100	100	2.5	
	PAN	223	83	86	100	100	100	6.1	
	SLV	100	0	0	0	6.9	
CAR	CAR	733	94	100	100	0	0	6.4	
LAC	CUB	150	100	100	100	100	100	17.2	
	DOM	0.5	
	GLP	0.4	
	GUF	0.4	
	HTI	181	97	100	100	100	100	1.1	
	MTQ	
	PRI	
MEX	MEX	11138	...	99	100	91	91	3.5	
NOA	CAN	
	USA	
SOC	ARG	779	...	0	0	0	0	0.6	
	CHL	31	...	0	0	0	0	0.2	
	PRY	999	81	44	78	100	93	5.1	
	URY	155	0.3	
Total and Average*		60024	79	77	78	73	72	2.8	0.6

*Weighted