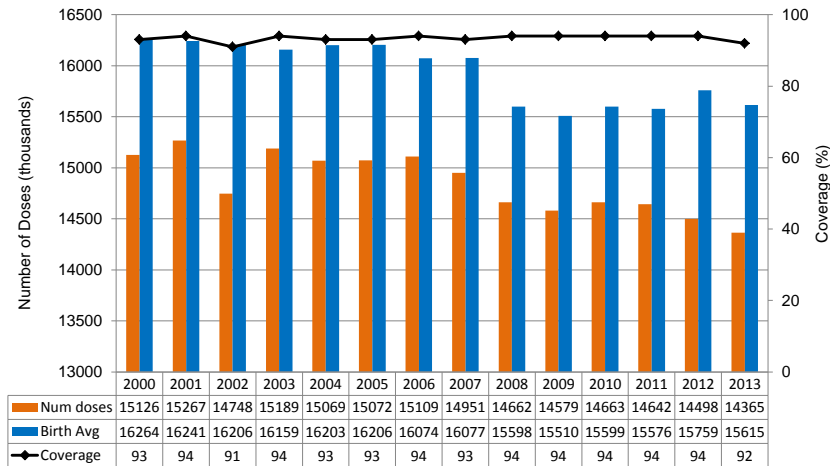


Measles/Rubella Weekly Bulletin

Vaccination coverage and number doses of measles in children 1 year of age, Region of the Americas, 2000-2013



Source: Country reports to FGL-IM.

Table 1
Classification of Suspect Measles, Rubella, and Congenital Rubella Syndrome (CRS) Cases for the Period of Weeks 01-43, 2014

Subregion and Country	Susp. Cases 2014	Measles Confirmed 2014			Year/Week Last Conf. Measles case	Rubella Confirmed 2014			Year/Week Last Conf. Rubella Case	Diagnosis of Discarded Cases 2014		Congenital Rubella Syndrome			Year/Week Last Conf. CRS Case	
		Clin.	Lab.	Total		Clin.	Lab.	Total		Dengue	Others	Susp.	Conf.	CRIS*		
AND	BOL	122	0	0	0	2000/40	0	0	0	2006/03	0	117	0
	COL	1839	0	0	0	2013/25	0	0	0	2012/42	1	1745	329	0	0	2005/34
	ECU	2012/28	2004/45
	PER	475	0	0	0	2008/18	0	0	0	2006/45	0	420	0	0	...	2007/16
	VEN	448	0	0	0	2012/16	0	0	0	2007/51	26	389	6
BRA	BRA	5341	85	453	538	2014/43	0	0	0	2009/41	0	4342	65	0	...	2009/34
CAP	CRI	38	0	0	0	2005/22	0	0	0	2001/42	1	33	0	0
	GTM	218	0	0	0	1998/05	0	0	0	2006/30	9	207	4	2005/00
	HND	135	0	0	0	1997/29	0	0	0	2004/11	18	115	10	0	0	2001/00
	NIC	114	0	0	0	1994/14	0	0	0	2004/19	2	104	16	0	...	2005/00
	PAN	192	0	0	0	2011/20	0	0	0	2002/48	1	187	0
	SLV	422	0	0	0	2001/19	0	0	0	2006/30	0	354	0	0	...	2001/00
CAR	CAR	429	0	0	0	2011/48	0	0	0	2008/18	0	389	7	1999/00
LAC	CUB	967	0	0	0	1993/27	0	0	0	2004/06	0	967	0	0
	DOM	54	0	0	0	2011/18	0	0	0	2006/44	0	41	0
	GLP	0	0	0	0	2011/28	0	0	0	...	0	0	2005/00
	GUF	0	0	0	0	2011/26	0	0	0	2010/06	0	0
	HTI	92	0	0	0	2001/39	0	0	0	2006/21	0	91	15	0	0	...
	MTQ	1	0	0	0	2011/27	0	0	0	...	1	1
	PRI
MEX	MEX	3892	0	2	2	2014/04	0	0	0	2012/49	0	3141	0	0	0	...
NOA	CAN	...	385 ^a	127	512 ^b	2014/36	0	1	1	2014/10	2011/12
	USA	600	600 ^b	2014/43	0	1	1	2014/16	2012/44
SOC	ARG	172	0	2	2	2014/36	0	2	2	2014/22	2	124	99	2009/27
	CHL	175	0	0	0	2011/25	0	0	0	2011/25	0	25	46	0	0	...
	PRY	284	0	0	0	1998/44	0	0	0	2005/21	1	278	4	0	0	2003/06
	URY	9	0	0	0	1999/08	0	0	0	2001/37	0	9	0
TOTAL		15419	470	1184	1654	--	0	4	4	--	62	13079	601	0	0	--

*Congenital Rubella Infection; (a) Provisional data and subject to change. Cases are epidemiologically linked and pending investigation. (b) Provisional data.

...No report received



Measles/Rubella Surveillance

Table No.2
Infection Source of Measles and Rubella Confirmed Cases for the Period of Weeks 01-43, 2014

Subregion and Country	Measles				Rubella			
	I	IR	CAC	U	I	IR	CAC	U
AND								
BOL								
COL								
ECU								
PER								
VEN				538				
BRA								
CAP								
CRI								
GTM								
HND								
NIC								
PAN								
SLV								
CAR								
LAC								
CUB								
DOM								
GLP								
GUF								
HTI								
MTQ								
PRI								
MEX				2				
NOA				436	1			
CAN	25	51						
USA	107	485		8	1			
SOC								
ARG	2				2			
CHL								
PRY								
URY								
TOTAL	134	536		984	4	0	0	0

Table No.3
Measles/Rubella Suspect Cases Under Investigation for the Period of Weeks 01-43, 2014

Country	Pending Cases 2013	Cumulative 2014	Week of Onset						% Pend.Cases
			1-38	39	40	41	42	43	
BOL	0	5	5	0	0	0	4
COL	0	93	78	1	6	7	1	0	5
ECU
PER	19	55	47	1	5	1	1	0	12
VEN	0	33	33	0	0	0	7
BRA	214	461	0	0	0	0	461	0	9
CRI	0	4	2	0	0	0	1	1	11
GTM	0	2	2	0	0	0	0	0	1
HND	0	2	1	0	0	1	0	0	1
NIC	0	8	0	0	2	6	0	0	7
PAN	0	4	4	0	0	0	0	0	2
SLV	0	68	62	2	2	1	1	0	16
CAR	0	40	13	3	8	8	6	2	9
LAC	0	0	0	0	0	0	0	0	0
CUB	0	13	11	2	0	0	0	0	24
DOM	0	0	0	0	0
GLP	0	0	0	0	0
GUF	0	0	0	0	0
HTI	0	1	1	0	0	0	0	...	1
MTQ	0	0	0	0	0
PRI
MEX	0	0	0	0	0	0	0	0	0
NOA
CAN
USA
SOC	38	43	43	0	0	0	0	0	25
ARG	0	13	13	0	0	0	0	0	7
CHL	0	5	5	0	0	0	0	0	2
PRY	0	0	0	0	0	0	0	0	0
URY	0	0	0	0	0	0	0	0	0
TOTAL	271	850	320	9	23	24	471	3	6

I: Imported; IR: Import-related; CAC: Country-acquired case
U: Unknown.

... No report received

Table 4.
Indicators of Integrated Measles/Rubella Surveillance for the Period of Weeks 01-43, 2014

Subregion and Country	Sites Reporting Weekly		% Cases with Adequate Investigation	% Cases with Adequate Sample	% Blood Samples Received in Lab. ≤5 days	% Lab. Results ≤4 days	Rate of Suspected Cases Last 52 weeks (2013/44-2014/43)		
	Total Units	% This Week					Measles/Rubella (100,000 pop.)	CRS (10,000 lb)	
AND	BOL	3055	...	99	98	72	91	1.5	0.0
	COL	5515	96	77	96	90	98	4.4	3.2
	ECU	2184
	PER	7314	...	82	89	73	41	2.4	0.0
	VEN	13092	...	88	98	65	48	1.9	0.1
BRA	BRA	12243	82	...	71	71	49	2.8	0.3
CAP	CRI	57	...	55	84	73	68	0.8	0.0
	GTM	1506	...	7	93	60	79	2.0	0.1
	HND	469	90	40	96	74	95	2.1	0.5
	NIC	185	100	93	96	94	94	1.9	1.2
	PAN	223	86	96	97	84	89	6.0	0.3
	SLV	69	95	84	72	7.4	0.0
CAR	CAR	719	79	38	83	9	89	6.1	0.6
LAC	CUB	150	100	100	100	100	100	17.2	0.0
	DOM	7	96	48	57	0.5	0.0
	GLP	0.4	...
	GUF	0.4	...
	HTI	144	...	90	99	86	67	1.2	1.1
	MTQ
	PRI
MEX	MEX	11138	...	98	98	88	81	3.5	0.0
NOA	CAN
	USA
SOC	ARG	779	...	18	96	57	28	0.6	1.4
	CHL	808	98	61	86	92	96	0.5	3.5
	PRY	991	91	69	96	95	86	5.3	0.3
	URY	155	...	89	78	86	71	0.0	0.0
Total and Average*		60727	86	83	87	79	71	2.9	0.7

*Weighted