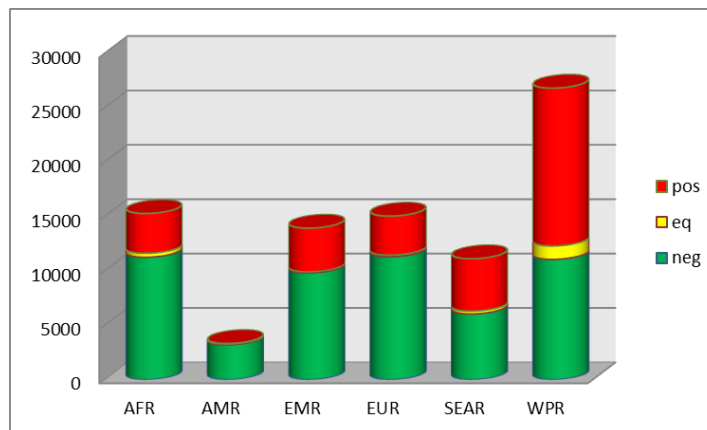


# Measles/Rubella Weekly Bulletin

## Worldwide Measles Laboratory Workload in 2014\*

Global total: 85,513 specimen tested for measles IgM: **30,676 were positive**



Source: surveillance DEF file sent to WHO  
Data in HQ as of Aug 2014

World Health Organization Regional (WHO) Offices:  
AFR- Africa; AMR- Americas; EMR- Eastern Mediterranean;  
EUR- Europe; SEAR- Southeast Asia; WPR- Western Pacific

Table.1  
Classification of Suspect Measles, Rubella, and Congenital Rubella Syndrome (CRS) Cases for the Period of Weeks 01-39, 2014

Subregion and Country	Susp. Cases 2014	Measles Confirmed 2014			Year/Week Last Conf. Measles case	Rubella Confirmed 2014			Year/Week Last Conf. Rubella Case	Diagnosis of Discarded Cases 2014		Congenital Rubella Syndrome			Year/Week Last Conf. CRS Case	
		Clin.	Lab.	Total		Clin.	Lab.	Total		Dengue	Others	Susp.	Conf.	CRI*		
AND	BOL	78	0	0	0	2000/40	0	0	0	2006/03	0	73	0	...	...	...
	COL	1397	0	0	0	2013/25	0	0	0	2012/42	0	1310	250	0	0	2005/34
	ECU	...	...	...	...	2012/28	...	...	...	2004/45	...	...	...	...	...	...
	PER	294	0	0	0	2008/18	0	0	0	2006/45	0	259	0	0	...	2007/16
	VEN	385	0	0	0	2012/16	0	0	0	2007/51	26	334	6	...	...	...
BRA	BRA	4937	63	414	477	2014/37	0	0	0	2009/41	0	4127	55	0	...	2009/34
CAP	CRI	35	0	0	0	2005/22	0	0	0	2001/42	1	30	0	0	...	...
	GTM	200	0	0	0	1998/05	0	0	0	2006/30	8	190	4	...	...	2005/00
	HND	89	0	0	0	1997/29	0	0	0	2004/11	16	72	6	0	0	2001/00
	NIC	85	0	0	0	1994/14	0	0	0	2004/19	2	80	16	0	...	2005/00
	PAN	182	0	0	0	2011/20	0	0	0	2002/48	1	178	0	...	...	...
	SLV	377	0	0	0	2001/19	0	0	0	2006/30	0	320	0	0	...	2001/00
CAR	CAR	336	0	0	0	2011/48	0	0	0	2008/18	0	317	0	...	...	1999/00
LAC	CUB	858	0	0	0	1993/27	0	0	0	2004/06	0	858	0	0	...	...
	DOM	39	0	0	0	2011/18	0	0	0	2006/44	0	35	0	...	...	...
	GLP	0	0	0	0	2011/28	0	0	0	...	0	0	...	...	...	2005/00
	GUF	0	0	0	0	2011/26	0	0	0	2010/06	0	0	...	...	...	...
	HTI	92	0	0	0	2001/39	0	0	0	2006/21	0	91	15	0	0	...
	MTQ	1	0	0	0	2011/27	0	0	0	...	0	1	...	...	...	...
	PRI	...	...	...	...	...	...	...	...	...	...	...	...	...	...	...
MEX	MEX	3243	0	2	2	2014/04	0	0	0	2012/49	0	2609	0	0	0	...
NOA	CAN	...	385 <sup>a</sup>	127	512 <sup>b</sup>	2014/36	0	1	1	2014/10	...	...	...	...	...	2011/12
	USA	...	...	595	595 <sup>b</sup>	2014/30	0	1	1	2014/16	...	...	...	...	...	2012/44
SOC	ARG	128	0	2	2	2014/36	0	2	2	2014/22	2	83	62	...	...	2009/27
	CHL	135	0	0	0	2011/25	0	0	0	2011/25	0	25	46	0	0	...
	PRY	254	0	0	0	1998/44	0	0	0	2005/21	0	249	4	0	0	2003/06
	URY	0	0	0	0	1999/08	0	0	0	2001/37	0	0	0	...	...	...
<b>TOTAL</b>		<b>13145</b>	<b>448</b>	<b>1140</b>	<b>1588</b>	--	<b>0</b>	<b>4</b>	<b>4</b>	--	<b>56</b>	<b>11241</b>	<b>464</b>	<b>0</b>	<b>0</b>	--

\*Congenital Rubella Infection; (a) Provisional data and subject to change. Cases are epidemiologically linked and pending investigation. (b) Provisional data.

...No report received



# Measles/Rubella Surveillance

**Table No.2**  
Infection Source of Measles and Rubella Confirmed Cases for the Period of Weeks 01-39, 2014

Subregion and Country		Measles				Rubella			
		I	IR	CAC	U	I	IR	CAC	U
AND	BOL								
	COL								
BRA	ECU				477				
	PER								
CAP	VEN								
	BRA								
CAR	CRI								
	GTM								
LAC	HND								
	NIC								
MEX	PAN								
	SLV								
NOA	CAR								
	CUB								
SOC	DOM								
	GLP								
URY	GUF								
	HTI								
URY	MTQ								
	PRI								
URY	MEX				2				
	CAN	25	51		436	1			
URY	USA	104	483		8	1			
	ARG	2				2			
URY	CHL								
	PRY								
URY	URY								
	TOTAL	131	534		923	4	0	0	0

**Table No.3**  
Measles/Rubella Suspect Cases Under Investigation for the Period of Weeks 01-39, 2014

Country	Pending Cases 2013	Cumulative 2014	Week of Onset						% Pend.Cases
			1-34	35	36	37	38	39	
BOL	0	5	5	...	...	...	...	...	6
COL	0	87	87	0	0	...	...	...	6
ECU	...	...	...	...	...	...	...	...	...
PER	15	35	30	0	0	3	1	1	12
VEN	0	25	25	0	0	0	0	...	6
BRA	214	376	0	0	0	376	0	...	8
CRI	0	4	2	2	0	0	0	0	11
GTM	0	2	2	0	0	0	0	0	1
HND	0	1	1	0	0	0	0	0	1
NIC	0	3	2	1	...	...	...	...	4
PAN	0	3	3	0	0	0	0	0	2
SLV	0	57	57	0	0	...	...	...	15
CAR	0	19	2	2	4	2	9	0	6
LAC	0	0	0	0	0	0	0	0	0
DOM	0	4	4	0	0	0	0	0	10
GLP	0	0	0	0	0	0	0	0	0
GUF	0	0	0	0	0	0	0	0	0
HTI	0	1	1	0	0	0	0	...	1
MTQ	0	0	0	0	0	0	0	0	0
PRI	...	...	...	...	...	...	...	...	...
MEX	35	6	6	0	0	0	0	0	0
CAN	...	...	...	...	...	...	...	...	...
USA	...	...	...	...	...	...	...	...	...
ARG	84	40	39	1	0	0	0	...	31
CHL	0	13	13	0	0	0	0	0	10
PRY	0	5	3	1	0	1	0	0	2
URY	0	0	0	0	0	0	0	0	0
TOTAL	348	686	282	7	4	382	10	1	5

I: Imported; IR: Import-related; CAC: Country-acquired case  
U: Unknown.

... No report received

**Table 4.**  
Indicators of Integrated Measles/Rubella Surveillance for the Period of Weeks 01-39, 2014

Subregion and Country		Sites Reporting Weekly		% Cases with Adequate Investigation	% Cases with Adequate Sample	% Blood Samples Received in Lab. ≤5 days	% Lab. Results ≤4 days	Rate of Suspected Cases Last 52 weeks (2013/40-2014/39)	
		Total Units	% This Week					Measles/Rubella (100,000 pop.)	CRS (10,000 lb)
AND	BOL	3127	...	99	97	75	88	1.2	0.0
	COL	6288	...	75	94	90	98	4.2	4.0
BRA	ECU	2184	...	...	...	...	...	...	...
	PER	7314	...	81	89	70	39	1.5	0.0
CAP	VEN	13092	...	92	97	68	50	1.8	0.2
	BRA	14081	84	0	71	71	47	2.8	0.3
CAR	CRI	57	...	49	89	69	63	0.9	0.0
	GTM	1506	...	8	94	59	80	2.2	0.1
LAC	HND	469	88	51	100	71	97	1.6	0.5
	NIC	185	...	94	99	94	95	2.2	1.9
MEX	PAN	223	...	96	97	84	88	5.9	0.3
	SLV	...	...	69	95	85	71	7.4	0.0
NOA	CAR	719	96	32	79	9	87	5.4	0.0
	CUB	150	100	100	100	100	100	17.2	0.0
SOC	DOM	...	...	8	97	61	68	0.5	0.0
	GLP	...	...	...	...	...	...	0.4	...
URY	GUF	...	...	...	...	...	...	0.4	...
	HTI	144	...	90	99	86	67	1.4	1.1
URY	MTQ	...	...	...	...	...	...	...	...
	PRI	...	...	...	...	...	...	...	...
URY	MEX	11138	...	98	98	87	81	3.5	0.0
	CAN	...	...	...	...	...	...	...	...
URY	USA	...	...	...	...	...	...	...	...
	ARG	779	...	19	94	53	23	0.5	1.3
URY	CHL	808	98	61	86	92	96	0.6	3.5
	PRY	991	87	69	96	94	84	5.2	0.3
URY	URY	155	...	0	0	0	0	0.0	0.0
	TOTAL and Average*	63410	85	83	86	78	69	2.9	0.7

\*Weighted