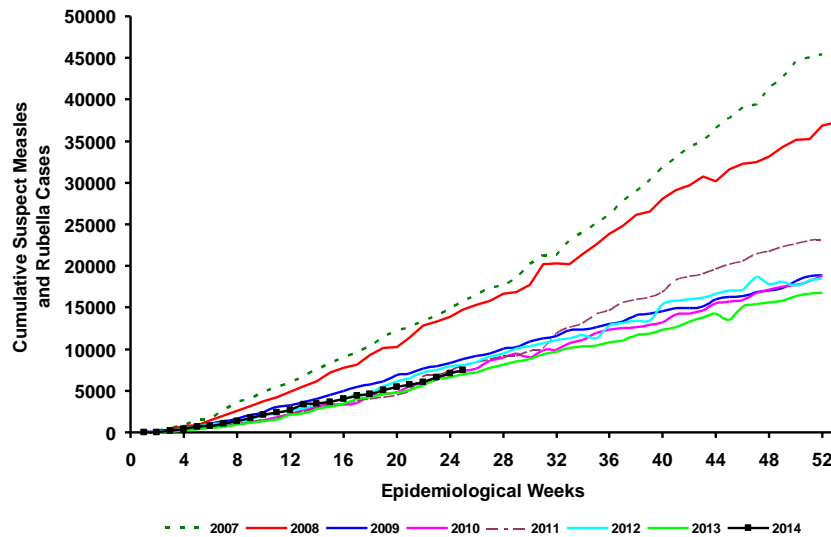


Measles/Rubella Weekly Bulletin

Cumulative suspected measles and rubella cases by epidemiological week, the Americas, 2007-2014*



Source: ISIS, MESS and country reports

* Data as of week 25, 2014.

Table.1
Classification of Suspect Measles, Rubella, and Congenital Rubella Syndrome (CRS) Cases for the Period of Weeks 01-25, 2014

Subregion and Country	Susp. Cases 2014	Measles Confirmed 2014			Year/Week Last Conf. Measles case	Rubella Confirmed 2014			Year/Week Last Conf. Rubella Case	Diagnosis of Discarded Cases 2014		Congenital Rubella Syndrome			Year/Week Last Conf. CRS Case		
		Clin.	Lab.	Total		Clin.	Lab.	Total		Dengue	Others	Susp.	Conf.	CRI*			
AND	BOL	61	0	0	0	2000/40	0	0	0	2006/03	0	55	0	
	COL	824	0	0	0	2013/25	0	0	0	2012/42	0	747	131	0	0	2005/34	
	ECU	0	2012/28	2004/45	
	PER	150	0	0	0	2008/18	0	0	0	2006/45	0	126	0	0	...	2007/16	
	VEN	275	0	0	0	2012/16	0	0	0	2007/51	25	211	6	
BRA	BRA	2693	25	199	224	2014/23	0	0	0	2009/41	0	2093	29	0	...	2009/34	
	CRI	18	0	0	0	2005/22	0	0	0	2001/42	1	9	0	0	
	GTM	103	0	0	0	1998/05	0	0	0	2006/30	7	95	2	2005/00	
	HND	41	0	0	0	1997/29	0	0	0	2004/11	2	15	6	0	0	2001/00	
	NIC	41	0	0	0	1994/14	0	0	0	2004/19	1	7	9	0	...	2005/00	
CAR	PAN	141	0	0	0	2011/20	0	0	0	2002/48	1	138	0	
	SLV	260	0	0	0	2001/19	0	0	0	2006/30	0	260	0	0	...	2001/00	
	CAR	173	0	0	0	2011/48	0	0	0	2008/18	0	165	0	1999/00	
	LAC	CUB	507	0	0	0	1993/27	0	0	0	2004/06	0	507	0	0
	DOM	30	0	0	0	2011/18	0	0	0	2006/44	0	28	0	
MEX	GLP	0	0	0	0	2011/28	0	0	0	0	...	2005/00	
	GUF	0	0	0	0	2011/26	0	0	0	2010/06	0	
	HTI	81	0	0	0	2001/39	0	0	0	2006/21	0	78	8	0	0	...	
	MTQ	0	0	0	0	2011/27	0	0	0	0	
	PRI	
NOA	MEX	1857	0	2	2	2014/04	0	0	0	2012/49	0	1498	0	0	0	...	
	CAN	...	385 ^a	120	505 ^b	2014/24	0	1	1	2014/10	0	0	0	0	...	2011/12	
SOC	USA	477	477 ^b	2014/19	0	1	1	2014/16	0	0	0	2012/44	
	ARG	105	0	0	0	2012/20	0	1	1	2011/20	2	66	48	2009/27	
	CHL	72	0	0	0	2011/25	0	0	0	2011/25	0	25	46	0	0	...	
	PRY	119	0	0	0	1998/44	0	0	0	2005/21	0	109	2	0	0	2003/06	
	URY	1999/08	2001/37	0	0	0	
TOTAL	7551	410	798	1208	--	0	3	3	--	39	6232	287	0	0	--		

*Congenital Rubella Infection; (a) Provisional data and subject to change. Cases are epidemiologically linked and pending investigation. (b) Provisional data.

...No report received



Measles/Rubella Surveillance

Table No.2
Infection Source of Measles and Rubella Confirmed Cases for the Period of Weeks 01-25, 2014

Subregion and Country		Measles				Rubella			
		I	IR	CAC	U	I	IR	CAC	U
AND	BOL								
	COL								
BRA	ECU								
	PER								
	VEN				224				
	BRA								
	CAP								
CAR	CRI								
	GTM								
	HND								
	NIC								
	PAN								
	SLV								
	LAC								
	CAR								
	CUB								
	DOM								
MEX	GLP								
	GUF								
	HTI								
	MTQ								
	PRI								
NOA	MEX				2				
	CAN	23	46		436	1			
	USA	91	379		7	1			
SOC	ARG					1			
	CHL								
	PRY								
	URY								
TOTAL		114	425		669	3	0	0	0

Table No.3
Measles/Rubella Suspect Cases Under Investigation for the Period of Weeks 01-25, 2014

Country	Pending Cases 2013	Cumulative 2014	Week of Onset						% Pend.Cases
			1-20	21	22	23	24	25	
BOL	1	6	5	1	0	10
COL	11	77	53	13	7	4	0	0	9
ECU
PER	15	24	20	2	2	0	16
VEN	0	39	34	4	0	1	0	0	14
BRA	214	376	0	0	0	0	376	0	14
CAP	0	8	6	1	0	1	0	...	44
CRI	0	1	0	0	1	0	0	0	1
GTM	0	24	17	0	2	5	0	0	59
HND	0	33	30	3	0	0	0	...	80
NIC	0	2	0	1	1	0	0	0	1
PAN	0	0	0	0	0	0	0	0	0
SLV	0	8	2	0	2	3	1	0	5
LAC	0	0	0	0	0	0	0	...	0
CAR	0	0	0	0	0	0	0	0	0
CUB	0	2	2	0	0	0	0	0	7
DOM	0	0	0	0	0	0	0	...	0
GLP	0	0	0	0	0	0	0
GUF	0	0	0	0	0	0	0
HTI	0	3	3	0	0	0	0	0	4
MTQ	0	0	0	0	0	0	0
PRI
MEX	35	8	7	0	1	0	0	0	0
CAN
USA
ARG	84	36	33	0	3	0	0	0	34
CHL	0	13	13	0	0	0	0	0	18
PRY	6	10	10	0	0	0	0	0	8
URY
TOTAL		366	670	235	25	19	14	377	0

I: Imported; IR: Import-related; CAC: Country-acquired case
U: Unknown.

... No report received

Table 4.
Indicators of Integrated Measles/Rubella Surveillance for the Period of Weeks 01-25, 2014

Subregion and Country		Sites Reporting Weekly		% Cases with Adequate Investigation	% Cases with Adequate Sample	% Blood Samples Received in Lab. ≤5 days	% Lab. Results ≤4 days	Rate of Suspected Cases Last 52 weeks (2013/26-2014/25)	
		Total Units	% This Week					Measles/Rubella (100,000 pop.)	CRS (10,000 lb)
AND	BOL	3127	...	98	97	75	84	1.4	0.1
	COL	5437	...	70	92	91	98	4.6	3.9
	ECU	2184	...	0	0	0	0	0.0	...
	PER	83	89	78	44	1.4	0.0
	VEN	13092	...	92	97	63	47	1.9	0.2
BRA	BRA	12579	79	99	77	77	54	2.8	0.2
	CAP	57	...	28	94	67	56	0.7	0.0
	GTM	1506	60	15	91	55	76	1.9	0.1
	HND	469	90	56	100	83	100	2.2	1.0
	NIC	185	0	41	95	82	79	2.4	2.2
	PAN	223	72	95	99	82	88	6.3	0.1
	SLV	893	87	69	95	89	67	7.1	3.8
	LAC	759	58	10	91	6	91	4.6	0.0
	CUB	150	100	100	100	100	100	10.3	0.0
	DOM	10	100	65	70	0.8	0.0
CAR	GLP	0.4	...
	GUF	0.4	...
	HTI	134	99	91	99	89	65	2.3	1.5
	MTQ	0.0	...
	PRI	0.0	...
MEX	MEX	11138	...	98	98	89	80	3.4	0.0
	NOA
	USA
SOC	ARG	779	...	15	94	59	26	0.7	1.4
	CHL	801	...	61	86	92	96	0.8	3.5
	PRY	988	89	54	94	94	97	4.4	0.3
	URY	155	0.0	0.0
Total and Average*		54656	79	87	89	81	72	2.9	0.6

*Weighted