

Measles/Rubella Weekly Bulletin



Comprehensive Family Immunization Project/Family and Community Health Area

Measles and Rubella Surveillance in the Americas

Vol. 19, No. 9

Week ending 2 March 2013

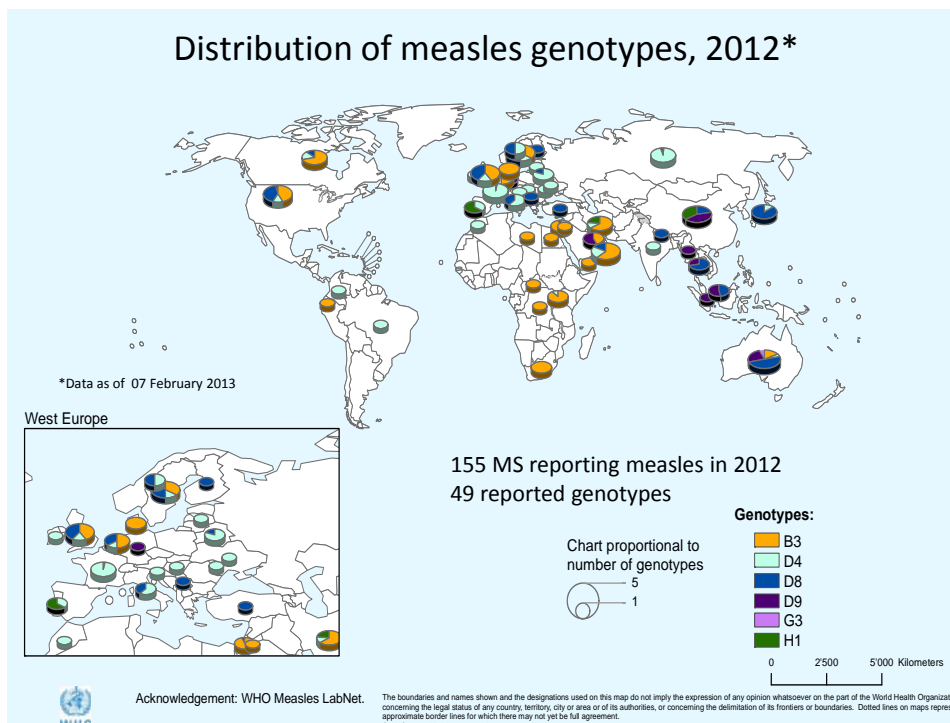


Table.1
Classification of Suspect Measles, Rubella, and Congenital Rubella Syndrome (CRS) Cases for the Period of Weeks 01-09, 2013

Subregion and Country	Susp. Cases 2013	Measles Confirmed 2013			Year/Week Last Conf. Measles case	Rubella Confirmed 2013			Year/Week Last Conf. Rubella Case	Diagnosis of Discarded Cases 2013		Congenital Rubella Syndrome			Year/Week Last Conf. CRS Case	
		Clin.	Lab.	Total		Clin.	Lab.	Total		Dengue	Others	Susp.	Conf.	CRI*		
AND	BOL	6	0	0	0	2000/40	0	0	0	2006/03	0	2	0
	COL	110	0	0	0	2012/05	0	0	0	2012/42	0	92	17	0	0	2005/34
	ECU	0	2012/28	2004/45
	PER	67	0	0	0	2008/18	0	0	0	2006/45	0	50	0	2007/16
	VEN	11	0	0	0	2012/16	0	0	0	2007/51	0	5	0	0	0	...
BRA	BRA	486	1	2	3	2013/09	0	0	0	2009/41	0	301	13	0	0	2009/34
	CRI	0	0	0	0	2005/22	0	0	0	2001/42	0	0	0	0
	GTM	39	0	0	0	1998/05	0	0	0	2006/30	9	28	0	0	0	2005/00
	HND	6	0	0	0	1997/29	0	0	0	2004/11	0	0	24	0	0	2001/00
	NIC	26	0	0	0	1994/14	0	0	0	2004/19	0	25	0	0	...	2005/00
CAR	PAN	20	0	0	0	2011/20	0	0	0	2002/48	0	19	0	0
	SLV	0	0	0	0	2001/19	0	0	0	2006/30	0	0	0	0	...	2001/00
	CAR	0	0	0	0	2011/48	0	0	0	2008/18	0	0	0	1999/00
	CUB	25	0	0	0	1993/27	0	0	0	2004/06	0	25	0	0
	DOM	15	0	0	0	2011/18	0	0	0	2006/44	0	15	0
LAC	GLP	0	0	0	0	2011/28	0	0	0	...	0	0	0	0	...	2005/00
	GUF	0	0	0	0	2011/26	0	0	0	2010/06	0	0	0	0
	HTI	10	0	0	0	2001/39	0	0	0	2006/47	0	1	0	0
	MTQ	0	0	0	0	2011/27	0	0	0	...	0	0	0	0
	PRI
MEX	MEX	186	0	0	0	2011/12	0	0	0	2012/XX	0	160	0	0
	CAN	5 ^a	5	2013/09	0	0	0	2012/03	0	0	0
	USA	14 ^a	14	2013/09	0	1	1	2013/05	0	0	0
SOC	ARG	15	0	0	0	2012/20	0	0	0	2011/20	0	2	12	2009/27
	CHL	23	0	0	0	2011/25	0	0	0	2011/25	0	12	0	0	0	...
	PRY	138	0	0	0	1998/44	0	0	0	2005/21	62	52	0	0	0	2003/06
	URY	1999/08	2001/37
TOTAL	1183	1	21	22	--	0	1	1	--	71	789	66	0	0	--	

*Congenital Rubella Infection; (a) Provisional data;

...No report received



Measles/Rubella Surveillance

Table No.2

Infection Source of Measles and Rubella Confirmed Cases for the Period of Weeks 01-09, 2013

Subregion and Country		Measles				Rubella			
		I	IR	CAC	U	I	IR	CAC	U
AND	BOL								
	COL								
	ECU								
	PER								
	VEN								
BRA	BRA	3							
	CAP								
	CRI								
	GTM								
	HND								
CAR	NIC								
	PAN								
	SLV								
	CAR								
	LAC								
	CUB								
	DOM								
	GLP								
	GUF								
	HTI								
MEX	MTQ								
	PRI								
	MEX								
NOA	CAN	3	1		1				
	USA	10	4						1
SOC	ARG								
	CHL								
	PRY								
	URY								
TOTAL		16	5		1				1

I: Imported; IR: Import-related; CAC: Country-acquired case
U: Unknown.

Table No.3

Measles/Rubella Suspect Cases Under Investigation for the Period of Weeks 01-09, 2013

Country	Pending Cases 2012	Cumulative 2013	Week of Onset							% Pend.Cases
			1-4	5	6	7	8	9		
BOL	8	4	4	0	67	
COL	35	18	9	1	5	1	2	0	16	
ECU	78	
PER	2	17	8	1	3	4	1	0	25	
VEN	45	6	6	0	0	0	0	0	55	
BRA	618	182	59	29	36	34	24	...	37	
CAP	4	0	0	0	0	0	
CRI	0	2	2	0	0	0	0	0	5	
GTM	1	6	2	2	0	1	0	1	100	
HND	0	1	0	0	0	1	0	0	4	
NIC	0	1	0	1	0	0	0	0	5	
PAN	0	0	0	0	0	
SLV	0	0	0	0	0	0	0	0	0	
CAR	0	0	0	0	0	0	0	0	0	
LAC	0	0	0	0	0	0	0	0	0	
CUB	0	0	0	0	0	0	0	0	0	
DOM	0	0	0	0	0	0	0	0	0	
GLP	0	0	0	0	0	0	0	0	0	
GUF	0	0	0	0	0	0	0	0	0	
HTI	0	9	1	1	2	0	4	1	90	
MTQ	0	0	0	0	0	0	0	0	0	
PRI	
MEX	97	26	14	3	5	4	0	...	14	
NOA	
CAN	
USA	
SOC	164	13	12	0	1	0	0	0	87	
ARG	2	11	3	1	5	1	1	0	48	
CHL	3	24	22	2	0	0	0	0	17	
PRY	
URY	
TOTAL		1057	320	142	41	57	46	32	2	27

... No report received

Table 4.

Indicators of Integrated Measles/Rubella Surveillance for the Period of Weeks 01-09, 2013

Subregion and Country		Sites Reporting Weekly		% Cases with Adequate Investigation	% Cases with Adequate Sample	% Blood Samples Received in Lab. ≤5 days	% Lab. Results ≤4 days	Rate of Suspected Cases Last 52 weeks (2012/10-2013/09)		
		Total Units	% This Week					Measles/Rubella (100,000 pop.)	CRS (10,000 lb)	
AND	BOL	100	100	100	67	1.6	0.4	
	COL	5025	...	75	88	96	98	5.0	2.7	
	ECU	2184	...	0	0	0	0	1.2	0.5	
	PER	6796	95	69	91	70	53	1.9	0.0	
	VEN	13092	0	82	91	60	50	1.7	0.0	
BRA	BRA	14126	88	99	...	99	...	2.8	0.4	
	CAP	57	0	0	0	0	0	0.6	0.0	
	GTM	1506	9	0	97	79	77	2.4	0.0	
	HND	469	87	67	100	100	100	1.3	5.3	
	NIC	185	100	88	96	73	92	2.2	0.0	
CAR	PAN	217	67	85	100	80	85	3.6	0.1	
	SLV	893	...	0	0	0	0	5.6	10.2	
	CAR	752	...	0	0	0	0	5.9	0.0	
	LAC	CUB	150	100	100	100	100	100	10.4	0.0
	DOM	108	82	13	93	73	60	1.2	0.0	
	GLP	0.7	...	
	GUF	4.9	...	
	HTI	100	91	40	90	89	100	1.3	0.1	
	MTQ	0.5	...	
	PRI	0.0	...	
MEX	MEX	11138	...	99	3.9	0.0	
NOA	CAN	
	USA	
SOC	ARG	779	...	0	100	67	53	0.6	1.6	
	CHL	569	99	65	83	86	90	1.0	4.2	
	PRY	892	83	59	82	98	98	10.9	0.0	
	URY	155	0.3	0.0	
Total and Average*		59193	84	87	90	93	86	3.0	0.8	

*Weighted

... No report received