

# Measles/Rubella Weekly Bulletin



Comprehensive Family Immunization Project/Family and Community Health Area

## Measles and Rubella Surveillance in the Americas

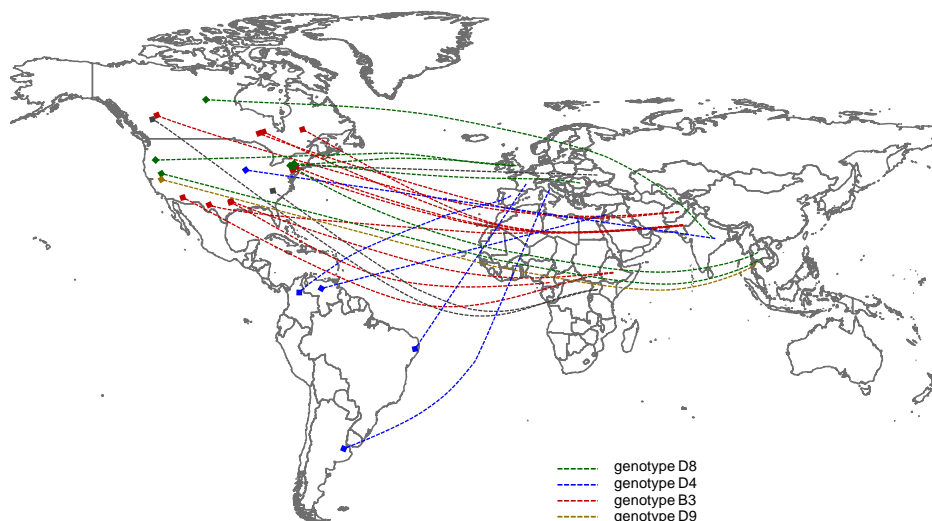
Vol. 19, No. 4

Week ending 26 January 2013



### Measles importations, 2012

Of the 136 measles cases detected in the Region of the Americas in 2012, 96% were virus importations or related to importations and 4% did not have source of infection available. Genotypes B3 followed by D8 and D4 were the most common genotypes detected.



Source: Country reports to PAHO/WHO (as of EW 3/2013) and the Global Measles Laboratory at the US Centers for Disease Control (CDC)

**Table.1**  
Classification of Suspect Measles, Rubella, and Congenital Rubella Syndrome (CRS) Cases for the Period of Weeks 01-04, 2013

Subregion and Country	Susp. Cases 2013	Measles Confirmed 2013			Year/Week Last Conf. Measles case	Rubella Confirmed 2013			Year/Week Last Conf. Rubella Case	Diagnosis of Discarded Cases 2013		Congenital Rubella Syndrome			Year/Week Last Conf. CRS Case
		Clin.	Lab.	Total		Clin.	Lab.	Total		Dengue	Others	Susp.	Conf.	CRI*	
AND	BOL	...	...	...	2000/40	...	...	...	2006/03	...	...	...	...	...	...
	COL	0	0	0	2012/05	0	0	0	2012/42	0	0	0	0	0	2005/34
	ECU	...	...	...	2012/28	...	...	...	2004/45	...	...	...	...	...	...
	PER	...	...	...	2008/18	...	...	...	2006/45	...	...	...	...	...	2007/16
	VEN	0	0	0	2012/16	0	0	0	2007/51	0	0	0	0	0	...
BRA	BRA	85	0	0	2012/02	0	0	0	2009/41	0	37	3	0	0	2009/34
CAP	CRI	0	0	0	2005/22	0	0	0	2001/42	0	0	0	...	...	...
	GTM	5	0	0	1998/05	0	0	0	2006/30	1	2	0	0	0	2005/00
	HND	2	0	0	1997/29	0	0	0	2004/11	0	0	6	0	0	2001/00
	NIC	6	0	0	1994/14	0	0	0	2004/19	0	6	0	...	...	2005/00
	PAN	7	0	0	2011/20	0	0	0	2002/48	0	7	0	...	...	...
	SLV	...	...	...	2001/19	...	...	...	2006/30	...	...	...	...	...	2001/00
CAR	CAR	...	...	...	2011/48	...	...	...	2008/18	...	...	...	...	...	1999/00
LAC	CUB	8	0	0	1993/27	0	0	0	2004/06	0	0	0	0	...	...
	DOM	1	0	0	2011/18	0	0	0	2006/44	0	1	0	0	...	...
	GLP	0	0	0	2011/28	0	0	0	...	0	0	0	0	...	2005/00
	GUF	0	0	0	2011/26	0	0	0	2010/06	0	0	0	0	...	...
	HTI	0	0	0	2001/39	0	0	0	2006/47	0	0	0	0	...	...
	MTQ	0	0	0	2011/27	0	0	0	...	0	0	0	0	...	...
	PRI	0	...	...	...	...	...	...	...	0	0	0	...	...	...
MEX	MEX	11	0	0	2011/12	0	0	0	2012/XX	0	7	0	...	...	...
NOA	CAN	...	0	0	2012/40	0	0	0	2012/03	...	...	...	...	...	...
	USA	...	0	11 <sup>a</sup>	2012/38	0	0	0	2012/34	...	...	0	...	...	...
SOC	ARG	...	...	...	2012/20	...	...	...	2011/20	0	0	0	...	...	2009/27
	CHL	1	0	0	2011/25	0	0	0	2011/25	0	1	0	0	0	...
	PRY	78	0	0	1998/44	0	0	0	2005/21	8	30	0	0	0	2003/06
	URY	...	...	...	1999/08	...	...	...	2001/37	0	0	0	...	...	...
<b>TOTAL</b>		<b>204</b>	<b>0</b>	<b>11</b>	<b>11</b>	<b>--</b>	<b>0</b>	<b>0</b>	<b>0</b>	<b>--</b>	<b>9</b>	<b>91</b>	<b>9</b>	<b>0</b>	<b>0</b>

\*Congenital Rubella Infection; (a) Provisional data;

...No report received



# Measles/Rubella Surveillance

**Table No.2**  
Infection Source of Measles and Rubella Confirmed Cases for the Period of Weeks 01-04, 2013

Subregion and Country	Measles				Rubella			
	I	IR	CAC	U	I	IR	CAC	U
AND								
BOL								
COL								
ECU								
PER								
VEN								
BRA								
CAP								
CRI								
GTM								
HND								
NIC								
PAN								
SLV								
CAR								
LAC								
CUB								
DOM								
GLP								
GLP								
GUF								
GUF								
HTI								
MTQ								
PRI								
MEX								
NOA								
CAN								
USA	7	4						
SOC								
ARG								
CHL								
PRY								
URY								
<b>TOTAL</b>	<b>7</b>	<b>4</b>						

**Table No.3**  
Measles/Rubella Suspect Cases Under Investigation for the Period of Weeks 01-04, 2013

Country	Pending Cases 2012	Cumulative 2013	Week of Onset					% Pend.Cases
			1	2	3	4		
BOL	6	...	...	...	...	...	...	...
COL	44	0	0	0	0	0	0	0
ECU	78	...	...	...	...	...	...	...
PER	3	...	...	...	...	...	...	...
VEN	57	0	0	0	0	...	...	0
BRA	618	48	12	13	23	...	...	0
CRI	8	0	0	0	0	0	0	...
GTM	1	2	0	2	0	0	0	40
HND	2	2	0	0	1	1	0	100
NIC	0	0	0	0	0	0	0	0
PAN	0	0	0	0	0	0	0	0
SLV	...	...	...	...	...	...	...	...
CAR	32	...	...	...	...	...	...	...
LAC								
CUB	0	0	0	0	0	0	0	0
DOM	0	0	0	0	0	0	0	0
GLP	0	0	0	0	0	0	0	0
GLP	0	0	0	0	0	0	0	0
GUF	0	0	0	0	0	0	0	0
GUF	0	0	0	0	0	0	0	0
HTI	130	0	0	0	0	0	0	0
MTQ	0	0	0	0	0	0	0	0
PRI	...	...	...	...	...	...	...	...
MEX	175	4	2	2	0	0	0	0
CAN	...	...	...	...	...	...	...	...
USA	...	...	...	...	...	...	...	...
ARG	172	...	...	...	...	...	...	...
CHL	1	0	0	0	0	0	0	0
PRY	3	40	3	6	24	7	0	51
URY	...	...	...	...	...	...	...	...
<b>TOTAL</b>	<b>1330</b>	<b>96</b>	<b>17</b>	<b>23</b>	<b>48</b>	<b>8</b>		<b>22</b>

I: Imported; IR: Import-related; CAC: Country-acquired case  
U: Unknown.

... No report received

**Table 4.**  
Indicators of Integrated Measles/Rubella Surveillance for the Period of Weeks 01-04, 2013

Subregion and Country	Sites Reporting Weekly		% Cases with Adequate Investigation	% Cases with Adequate Sample	% Blood Samples Received in Lab. ≤5 days	% Lab. Results ≤4 days	Rate of Suspected Cases Last 52 weeks (2012/05-2013/04)	
	Total Units	% This Week					Measles/Rubella (100,000 pop.)	CRS (10,000 lb)
AND								
BOL	...	...	...	...	...	...	1.6	0.4
COL	5024	95	0	100	100	100	3.9	2.7
ECU	2184	...	...	...	...	...	10.5	0.5
PER	...	...	...	...	...	...	1.0	0.0
VEN	13092	...	0	0	0	0	2.0	0.0
BRA								
BRA	2736	76	99	...	99	...	0.3	0.4
CAP								
CRI	57	0	0	0	0	0	0.6	0.0
GTM	1506	0	0	100	100	80	2.5	0.0
HND	469	95	50	100	100	100	1.2	5.3
NIC	185	95	100	100	100	100	2.1	0.0
PAN	217	89	71	100	57	100	3.6	0.1
SLV	893	...	...	...	...	...	6.1	10.2
CAR								
LAC								
CUB	752	...	...	...	...	...	6.6	0.0
DOM	150	100	100	100	100	100	11.1	0.0
GLP	195	94	0	100	67	83	0.9	0.0
GLP	...	...	...	...	...	...	1.1	...
GUF	...	...	...	...	...	...	5.8	...
GUF	...	...	...	...	...	...	...	...
HTI	100	96	0	0	0	0	1.3	0.1
MTQ	...	...	...	...	...	...	0.5	...
PRI	...	...	...	...	...	...	...	...
MEX								
NOA								
CAN	11138	0	100	0	0	0	3.9	0.0
USA	...	...	...	...	...	...	...	...
SOC								
ARG	779	...	...	...	...	...	0.6	1.6
CHL	537	99	67	92	85	92	0.8	4.2
PRY	872	90	40	55	98	98	10.8	0.0
URY	155	...	...	...	...	...	0.3	0.0
<b>Total and Average*</b>	<b>41041</b>	<b>95</b>	<b>40</b>	<b>59</b>	<b>98</b>	<b>97</b>	<b>2.1</b>	<b>0.8</b>

\*Weighted

... No report received