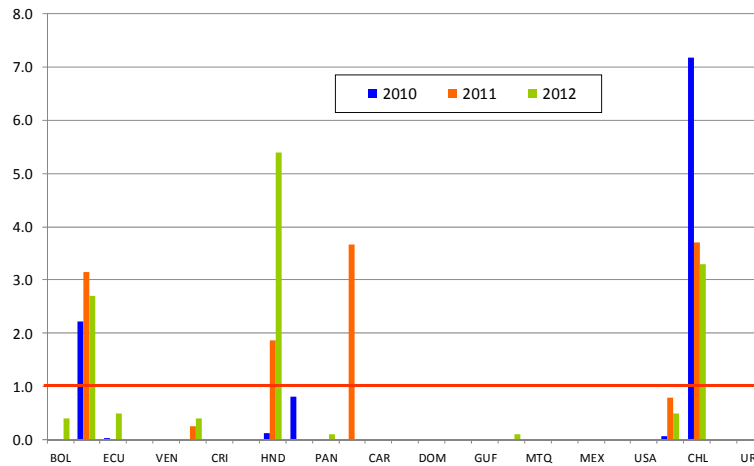




## Rate of Suspect Congenital Rubella Syndrome (CRS) Region of the Americas, 2010-2012\*



Source: Country reports  
Data as of 7 December 2012

**Table.1**  
**Classification of Suspect Measles, Rubella, and Congenital Rubella Syndrome (CRS) Cases for the Period of Weeks 01-48, 2012**

Subregion and Country	Susp. Cases 2012	Measles Confirmed 2012			Year/Week Last Conf. Measles case	Rubella Confirmed 2012			Year/Week Last Conf. Rubella Case	Diagnosis of Discarded Cases 2012		Congenital Rubella Syndrome			Year/Week Last Conf. CRS Case	
		Clin.	Lab.	Total		Clin.	Lab.	Total		Dengue	Others	Susp.	Conf.	CRI*		
AND	BOL	166	0	0	0	2000/40	...	...	...	2006/03	30	130	10	...	...	...
	COL	1976	0	1	1	2012/05	0	2	2	2012/42	5	1903	227	0	0	2005/34
	ECU	1435	0	68	68	2012/28	...	...	...	2004/45	18	86	14	0	...	...
	PER	320	0	0	0	2008/18	0	0	0	2006/45	0	307	0	...	...	2007/16
	VEN	600	0	1	1	2012/16	0	0	0	2007/51	45	420	0	0	0	...
BRA	BRA	5309	0	1	1	2012/02	0	0	0	2009/41	0	4831	124	0	...	2009/34
CAP	CRI	24	0	0	0	2005/22	0	0	0	2001/42	1	19	0	0	0	...
	GTM	372	0	0	0	1998/05	0	0	0	2006/30	70	294	0	0	0	2005/00
	HND	94	0	0	0	1997/29	0	0	0	2004/11	15	60	109	0	0	2001/00
	NIC	119	0	0	0	1994/14	0	0	0	2004/19	1	112	0	0	0	2005/00
	PAN	85	0	0	0	2011/20	0	0	0	2002/48	1	84	1	0	0	...
	SLV	415	0	0	0	2001/19	0	0	0	2006/30	0	415	0	...	...	2001/00
CAR	CAR	525	0	0	0	2011/48	0	0	0	2008/18	0	438	0	0	0	1999/00
LAC	CUB	1198	0	0	0	1993/27	0	0	0	2004/06	0	1198	0	0	0	...
	DOM	102	0	0	0	2011/18	0	0	0	2006/44	2	100	0	...	...	...
	GLP	5	0	0	0	2012/10	0	0	0	...	0	4	0	0	0	2005/00
	GUF	13	0	0	0	2011/26	0	0	0	2010/06	4	9	0	0	0	...
	HTI	127	0	0	0	2001/39	0	0	0	2006/47	0	0	3	0	...	...
	MTQ	2	0	0	0	2011/27	0	0	0	...	0	2	0	0	0	...
	PRI	...	...	...	...	...	...	...	...	...	...	...	...	...	...	...
MEX	MEX	3973	0	0	0	2011/12	0	0	0	2008/20	0	3852	0	0	0	...
NOA	CAN	...	...	9	9	2012/40	0	2	2	2012/03	0	0	0	0	0	...
	USA	...	...	53	53 <sup>a</sup>	2012/38	0	7	7	2012/34	0	0	0	3	0	...
SOC	ARG	198	0	1	1	2012/20	0	0	0	2011/20	0	49	29	0	0	2009/27
	CHL	149	0	0	0	2011/25	0	0	0	2011/25	0	145	81	0	0	...
	PRY	625	0	0	0	1998/44	0	0	0	2005/21	32	587	0	0	0	2003/06
	URY	3	0	0	0	1999/08	0	0	0	2001/37	0	3	0	0	0	...
<b>TOTAL</b>		<b>17835</b>	<b>0</b>	<b>134</b>	<b>134</b>	<b>--</b>	<b>0</b>	<b>11</b>	<b>11</b>	<b>--</b>	<b>224</b>	<b>15048</b>	<b>598</b>	<b>3</b>	<b>0</b>	<b>--</b>

\*Congenital Rubella Infection; (a) Provisional data;

...No report received



# Measles / Rubella Surveillance

**Table No.2**  
Infection Source of Measles and Rubella Confirmed Cases for the Period of Weeks 01-48, 2012

Subregion and Country		Measles				Rubella			
		I	IR	CAC	U	I	IR	CAC	U
AND	BOL	1							2
	COL		68						
BRA	PER								
	VEN	1							
CAP	BRA	1							
	CRI								
CAR	GTM								
	HND								
	NIC								
	PAN								
	SLV								
	LAC								
	CAR								
	CUB								
	DOM								
	GLP								
MEX	GUF								
	HTI								
	MTQ								
	PRI								
NOA	MEX	7			2	2			
	CAN	24			5	1			
SOC	USA		24						6
	ARG	1							
	CHL								
	PRY								
<b>TOTAL</b>		<b>35</b>	<b>92</b>		<b>7</b>	<b>3</b>			<b>8</b>

**Table No.3**  
Measles/Rubella Suspect Cases Under Investigation for the Period of Weeks 01-48, 2012

Country	Pending Cases 2011	Cumulative 2012	Week of Onset						% Pend.Cases	
			1-43	44	45	46	47	48		
BOL	1	6	5	0	0	1	0	...	4	
COL	0	65	64	0	1	0	0	0	3	
ECU	41	78	78	...	...	...	...	...	5	
PER	0	13	13	...	...	...	...	...	4	
VEN	1	134	132	0	1	1	0	0	23	
BRA	0	476	413	23	17	15	8	...	8	
CRI	0	4	4	0	0	0	0	0	19	
GTM	0	7	6	0	0	0	0	1	2	
HND	0	1	0	0	0	1	0	0	1	
NIC	0	5	0	0	0	0	0	0	4	
PAN	6	0	0	0	0	0	0	0	0	
SLV	0	0	0	0	0	...	...	...	0	
CAR	0	86	68	7	5	3	3	0	17	
CUB	0	0	0	0	0	0	0	0	0	
DOM	0	0	0	0	0	0	0	0	0	
GLP	0	1	0	0	0	0	1	0	20	
GUF	0	0	0	0	0	0	0	0	0	
HTI	0	127	126	0	0	1	0	0	101	
MTQ	0	0	0	0	0	0	0	0	0	
PRI	...	...	...	...	...	...	...	...	...	
MEX	0	121	115	2	4	0	...	...	3	
CAN	...	...	...	...	...	...	...	...	...	
USA	...	...	...	...	...	...	...	...	...	
ARG	241	148	147	1	0	0	0	0	75	
CHL	0	4	2	1	0	1	0	0	3	
PRY	0	3	2	0	0	1	0	0	0	
URY	4	0	0	...	...	...	...	...	0	
<b>TOTAL</b>		<b>294</b>	<b>1279</b>	<b>1180</b>	<b>34</b>	<b>28</b>	<b>24</b>	<b>12</b>	<b>1</b>	<b>7</b>

I: Imported; IR: Import-related; CAC: Country-acquired case  
U: Unknown.

... No report received

**Table 4.**  
Indicators of Integrated Measles/Rubella Surveillance for the Period of Weeks 01-48, 2012

Subregion and Country		Sites Reporting Weekly		% Cases with Adequate Investigation	% Cases with Adequate Sample	% Blood Samples Received in Lab. ≤5 days	% Lab. Results ≤4 days	Rate of Suspected Cases Last 52 weeks (2011/49-2012/48)		
		Total Units	% This Week					Measles/Rubella (100,000 pop.)	CRS (10,000 lb)	
AND	BOL	...	...	100	99	74	98	1.8	0.4	
	COL	5024	97	77	95	93	96	4.8	2.7	
	ECU	2203	...	54	98	91	74	4.2	0.5	
	PER	...	...	73	87	81	62	1.4	0.0	
	VEN	13092	0	63	95	12	10	2.2	0.0	
BRA	BRA	270	89	74	...	...	...	3.0	0.4	
	CAP	CRI	57	0	13	88	88	63	0.5	0.0
	GTM	1506	9	10	97	70	85	2.7	0.0	
	HND	469	87	54	99	81	88	1.3	5.4	
	NIC	185	100	93	100	86	96	2.2	0.0	
CAR	PAN	215	0	48	94	79	87	2.6	0.1	
	SLV	893	...	61	99	72	74	7.0	0.0	
	LAC	CAR	752	82	87	95	27	96	7.5	0.0
	CUB	150	100	100	100	100	100	0.0	0.0	
	DOM	...	...	53	100	69	74	1.1	0.0	
	GLP	...	...	...	...	...	...	1.1	...	
	GUF	...	...	...	...	...	...	5.8	...	
	HTI	78	94	17	91	46	1	1.3	0.1	
	MTQ	...	...	...	...	...	...	0.5	...	
	PRI	...	...	...	...	...	...	0.0	...	
MEX	MEX	11138	0	99	...	...	...	3.8	0.0	
	NOA	CAN	...	...	...	...	...	0.0	...	
SOC	USA	...	...	...	...	...	...	0.0	...	
	ARG	779	...	12	92	67	46	0.5	0.5	
	CHL	0	0	72	94	86	90	1.1	3.3	
	PRY	861	89	75	98	96	99	10.7	0.0	
URY	155	...	0	100	100	67	67	0.2	0.0	
<b>Total and Average*</b>		<b>37827</b>	<b>84</b>	<b>77</b>	<b>96</b>	<b>79</b>	<b>81</b>	<b>1.8</b>	<b>0.6</b>	

\*Weighted

... No report received