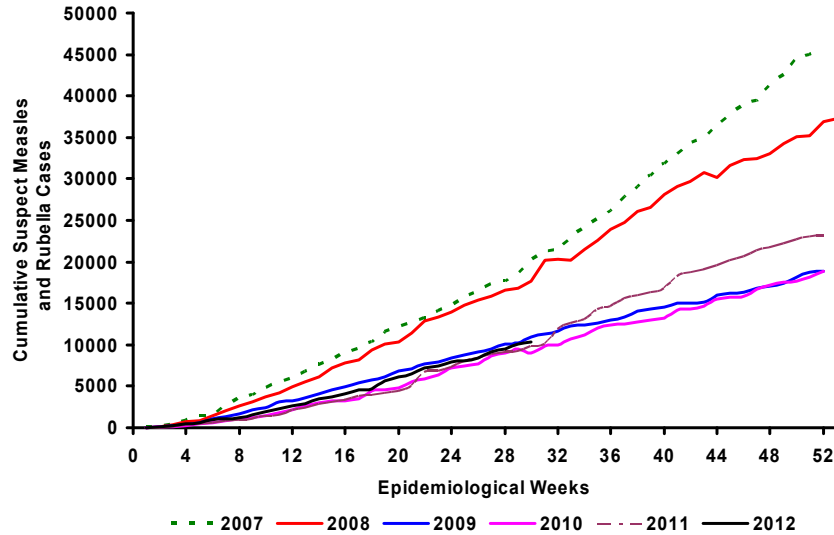




## Cumulative Suspect Measles and Rubella Cases by Epidemiological Week, The Americas, 2007–2012\*



Source: Country reports

\* Data as of Week 31, 2012.

**Table.1**  
Classification of Suspect Measles, Rubella, and Congenital Rubella Syndrome (CRS) Cases for the Period of Weeks 01-31, 2012

Subregion and Country	Susp. Cases 2012	Measles Confirmed 2012			Year/Week Last Conf. Measles case	Rubella Confirmed 2012			Year/Week Last Conf. Rubella Case	Diagnosis of Discarded Cases 2012		Congenital Rubella Syndrome			Year/Week Last Conf. CRS Case
		Clin.	Lab.	Total		Clin.	Lab.	Total		Dengue	Others	Susp.	Conf.	CRIs*	
AND	BOL	145	0	0	2000/40	...	...	...	2006/03	30	107	0	...	...	...
	COL	1253	0	1	2012/05	0	1	1	2012/12	3	1197	102	0	0	2005/34
	ECU	1306	0	68	2012/26	...	...	...	2004/45	18	86	14	...	...	...
	PER	320	0	0	2008/18	0	0	0	2006/45	0	307	0	...	...	2007/16
	VEN	222	0	1	2012/16	0	0	0	2007/51	25	156	0	0	0	...
BRA	BRA	3088	0	1	2012/02	0	0	0	2009/41	0	2668	60	...	...	2009/34
CAP	CRI	18	0	0	2005/22	0	0	0	2001/42	1	13	0	0	0	...
	GTM	242	0	0	1998/05	0	0	0	2006/30	25	213	0	0	0	2005/00
	HND	58	0	0	1997/29	0	0	0	2004/11	8	35	65	0	0	2001/00
	NIC	67	0	0	1994/14	0	0	0	2004/19	1	61	0	0	0	2005/00
	PAN	71	0	0	2011/20	0	0	0	2002/48	1	70	0	0	0	...
	SLV	265	0	0	2001/19	0	0	0	2006/30	0	265	0	...	...	2001/00
CAR	CAR	338	0	0	2011/48	0	0	0	2008/18	0	197	0	0	0	1999/00
LAC	CUB	682	0	0	1993/27	0	0	0	2004/06	0	682	0	0	0	...
	DOM	76	0	0	2011/18	0	0	0	2006/44	2	74	0	...	...	...
	GLP	3	0	0	2012/10	0	0	0	...	0	3	0	0	0	2005/00
	GUF	12	0	0	2011/26	0	0	0	2010/06	3	9	0	0	0	...
	HTI	107	0	0	2001/39	0	0	0	2006/47	0	0	3	0	0	...
	MTQ	1	0	0	2011/27	0	0	0	...	0	0	0	0	0	...
	PRI	...	...	...	...	...	...	...	...	...	...	...	...	...	...
MEX	MEX	1764	0	0	2011/12	0	0	0	2008/20	0	1499	0	0	0	...
NOA	CAN	...	...	6	2012/21	0	1	1	2012/03	0	0	0	0	0	...
	USA	...	...	48 <sup>a</sup>	2012/29	0	4	4	2012/17	0	0	0	2	0	...
SOC	ARG	140	0	1	2012/20	0	0	0	2011/20	0	16	29	0	0	2009/27
	CHL	108	0	0	2011/25	0	0	0	2011/25	0	101	52	0	0	...
	PRY	416	0	0	1998/44	0	0	0	2005/21	30	386	0	0	0	2003/06
	URY	0	0	0	1999/08	0	0	0	2001/37	0	0	0	0	0	...
<b>TOTAL</b>		<b>10702</b>	<b>0</b>	<b>126</b>	<b>126</b>	<b>--</b>	<b>0</b>	<b>6</b>	<b>6</b>	<b>--</b>	<b>147</b>	<b>8145</b>	<b>325</b>	<b>2</b>	<b>0</b>

\*Congenital Rubella Infection; (a) Provisional data;

...No report received



# Measles / Rubella Surveillance

Table No.2

Infection Source of Measles and Rubella Confirmed Cases for the Period of Weeks 01-31, 2012

Subregion and Country		Measles				Rubella			
		I	IR	CAC	U	I	IR	CAC	U
AND	BOL	1							1
	COL		68						
	ECU								
	PER								
	VEN	1							
BRA	BRA	1							
	CAP								
CAR	CRI								
	GTM								
	HND								
	NIC								
	PAN								
	SLV								
	CAR								
	LAC								
	CUB								
	DOM								
MEX	GLP								
	GUF								
	HTI								
	MTQ								
	PRI								
NOA	MEX				1	1			
	CAN	5			6	1			
SOC	USA	20	22						3
	ARG	1							
	CHL								
	URY								
<b>TOTAL</b>		<b>29</b>	<b>90</b>		<b>7</b>	<b>2</b>			<b>4</b>

I: Imported; IR: Import-related; CAC: Country-acquired case  
U: Unknown.

Table No.3

Measles/Rubella Suspect Cases Under Investigation for the Period of Weeks 01-31, 2012

Country	Pending Cases 2011	Cumulative 2012	Week of Onset							% Pend.Cases
			1-26	27	28	29	30	31		
BOL	1	8	7	1	0	0	0	0	0	6
COL	4	51	45	1	3	1	1	0	0	4
ECU	41	83	49	8	7	5	11	3	0	6
PER	0	13	13	0	0	0	0	0	0	4
VEN	1	40	40	0	0	0	0	0	0	18
BRA	79	419	313	33	38	16	19	...	...	14
CRI	1	4	3	0	0	1	0	0	0	22
GTM	0	4	0	0	0	0	4	0	0	2
HND	0	1	1	0	0	0	0	0	0	2
NIC	0	5	4	1	0	0	0	0	0	7
PAN	6	0	0	0	0	0	0	0	0	0
SLV	0	0	0	0	0	0	0	...	...	0
CAR	0	141	114	11	8	6	1	1	1	42
CUB	0	0	0	0	0	0	0	0	0	0
DOM	0	0	0	0	0	0	0	0	0	0
GLP	0	0	0	0	0	0	0	0	0	0
GUF	0	0	0	0	0	0	0	0	0	0
HTI	0	107	103	0	3	1	0	0	0	100
MTQ	0	1	0	0	0	0	1	...	...	100
PRI	...	...	...	...	...	...	...	...	...	...
MEX	0	265	252	4	4	3	1	1	1	15
CAN	...	...	...	...	...	...	...	...	...	...
USA	...	...	...	...	...	...	...	...	...	...
ARG	247	123	123	0	0	0	0	0	0	88
CHL	0	7	2	2	1	1	1	0	0	6
PRY	0	0	0	0	0	0	0	0	0	0
URY	4	0	0	...	...	...	...	...	...	6
<b>TOTAL</b>		<b>384</b>	<b>1272</b>	<b>1069</b>	<b>61</b>	<b>64</b>	<b>34</b>	<b>39</b>	<b>5</b>	<b>12</b>

... No report received

Table 4.

Indicators of Integrated Measles/Rubella Surveillance for the Period of Weeks 01-31, 2012

Subregion and Country		Sites Reporting Weekly		% Cases with Adequate Investigation	% Cases with Adequate Sample	% Blood Samples Received in Lab. ≤5 days	% Lab. Results ≤4 days	Rate of Suspected Cases Last 52 weeks (2011/32-2012/31)	
		Total Units	% This Week					Measles/Rubella (100,000 pop.)	CRS (10,000 lb)
AND	BOL	...	...	100	99	76	99	2.7	0.8
	COL	4827	94	76	96	91	95	8.2	2.3
	ECU	2203	79	72	95	82	89	6.7	0.5
	PER	...	...	73	87	81	62	2.9	0.0
	VEN	13092	...	69	97	25	21	1.8	0.0
BRA	BRA	270	78	61	...	...	...	2.8	0.4
	CAP	57	0	11	83	94	56	0.5	0.0
CAR	GTM	1506	0	4	98	75	93	2.5	0.0
	HND	469	94	52	100	83	86	1.3	4.0
	NIC	185	0	96	100	84	99	2.7	0.0
	PAN	215	73	41	93	80	93	4.3	0.0
	SLV	893	0	55	99	75	77	8.0	0.0
	CAR	752	93	97	92	27	94	7.4	0.0
	LAC	CUB	150	100	100	100	100	10.4	0.0
	DOM	0	0	59	100	70	69	1.2	0.0
	GLP	...	...	...	...	...	...	0.9	...
	GUF	...	...	...	...	...	...	5.8	...
MEX	HTI	78	58	13	88	40	0	1.1	0.1
	MTQ	...	...	...	...	...	...	0.5	...
	PRI	...	...	...	...	...	...	...	...
	MEX	11138	0	97	0	0	0	4.3	0.0
	NOA	CAN	...	...	...	...	...	...	...
SOC	USA	...	...	...	...	...	...	...	...
	ARG	779	0	10	90	64	39	0.6	0.9
	CHL	569	100	78	94	84	91	1.4	4.9
	PRY	871	93	74	98	95	98	10.8	0.0
URY	155	0	0	0	0	0	1.3	0.0	
<b>Total and Average*</b>		<b>38209</b>	<b>83</b>	<b>73</b>	<b>96</b>	<b>80</b>	<b>87</b>	<b>2.3</b>	<b>0.6</b>

\*Weighted

... No report received