

# IFA's AFE-ECHO Strategy



# About the International Federation on Ageing

---



## MISSION

To drive the agenda of the world's ageing populations.

## GOAL

To be the global point of connection and a network of experts and expertise to influence and shape age-related policy.



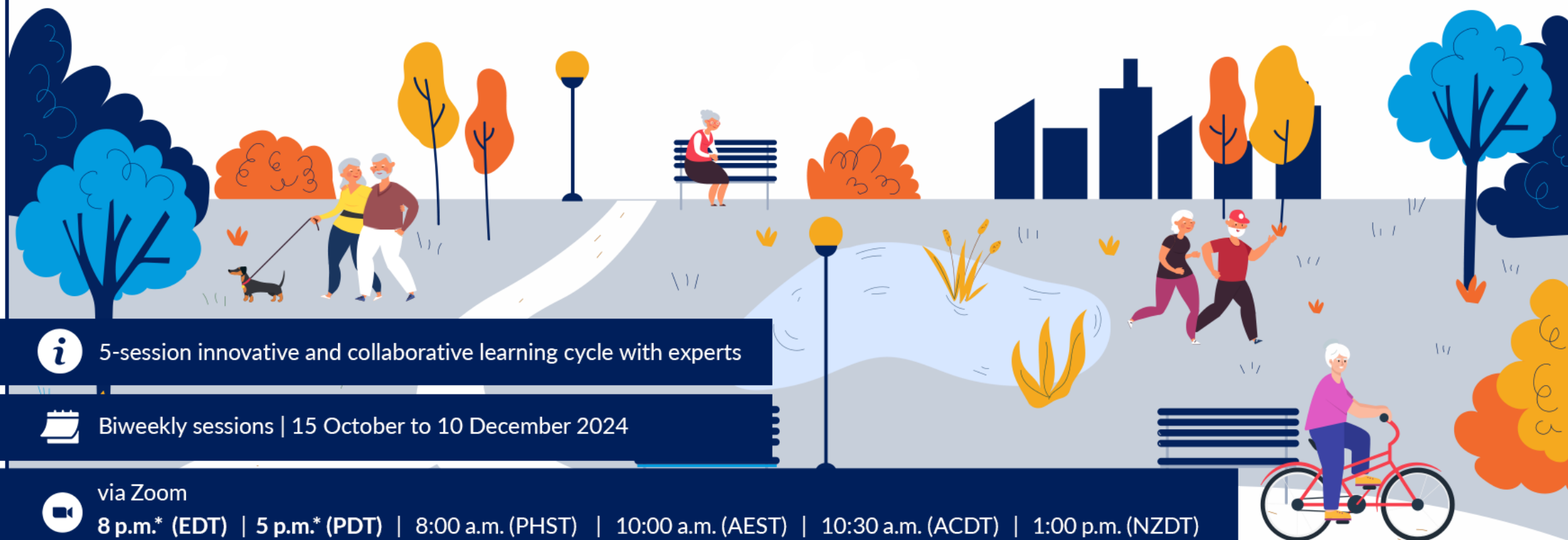
## A World of Ageing

**By 2030** the number of people aged 60 years and older will be **34% higher than today = 1.4 billion people.**

**By 2050** this population will have **more than doubled to 2.1 billion** and outnumber adolescents and young people.



# Age-friendly Environments ECHO Programme



**i** 5-session innovative and collaborative learning cycle with experts

**📅** Biweekly sessions | 15 October to 10 December 2024

**📺** via Zoom  
8 p.m.\* (EDT) | 5 p.m.\* (PDT) | 8:00 a.m. (PHST) | 10:00 a.m. (AEST) | 10:30 a.m. (ACDT) | 1:00 p.m. (NZDT)

## All Teach, All Learn



**We call it “all teach, all learn.”**

ECHO participants engage in a virtual community with their peers where they share support, guidance and feedback. As a result, our collective understanding of how to disseminate and implement best practices across diverse disciplines continuously improves and expands.

## Age-friendly Environments AFE ECHO Programme

PST	EST	PHST	AEST	ACDT	NZDT
14 October 5:00 p.m. PDT	8:00 p.m. EDT	15 October 8:00 a.m.	10:00 a.m.	10:30 a.m.	1:00 p.m.
28 October 5:00 p.m. PDT	8:00 p.m. EDT	29 October 8:00 a.m.	10:00 a.m.	10:30 a.m.	1:00 p.m.
11 November 4:00 p.m.	7:00 p.m.	12 November 8:00 a.m.	10:00 a.m.	10:30 a.m.	1:00 p.m.
25 November 4:00 p.m.	7:00 p.m.	26 November 8:00 a.m.	10:00 a.m.	10:30 a.m.	1:00 p.m.
9 December 4:00 p.m.	7:00 p.m.	10 December 8:00 a.m.	10:00 a.m.	10:30 a.m.	1:00 p.m.



Thank

You