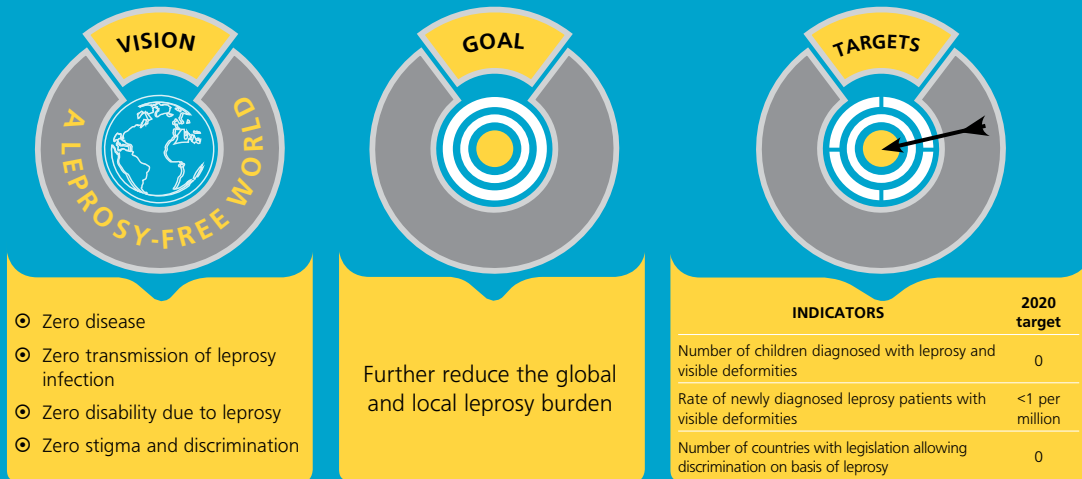




2016-2020 GLOBAL LEPROSY STRATEGY



PILLARS AND COMPONENTS

1. Strengthen government ownership, coordination and partnership

- Ensuring political commitment and adequate resources for leprosy programmes.
- Contributing to universal health coverage with a special focus on children, women and underserved populations including migrants and displaced people.
- Promoting partnerships with state and non-state actors and promote intersectoral collaboration and partnerships at the international level and within countries.
- Facilitating and conducting basic and operational research in all aspects of leprosy and maximize the evidence base to inform policies, strategies and activities.
- Strengthening surveillance and health information systems for programme monitoring and evaluation (including geographical information systems)

2. Stop leprosy and its complications

- Strengthening patient and community awareness on leprosy.
- Promoting early case detection through active case-finding (e.g. campaigns) in areas of higher endemicity and contact management.
- Ensuring prompt start and adherence to treatment, including working towards improved treatment regimens.
- Improving prevention and management of disabilities.
- Strengthening surveillance for antimicrobial resistance including laboratory network.
- Promoting innovative approaches for training, referrals and sustaining expertise in leprosy such eHealth.
- Promoting interventions for the prevention of infection and disease.

3. Stop discrimination and promote inclusion

- Promoting societal inclusion through addressing all forms of discrimination and stigma.
- Empowering persons affected by leprosy and strengthen their capacity to participate actively in leprosy services.
- Involving communities in actions for improvement of leprosy services.
- Promoting coalition-building among persons affected by leprosy and encourage the integration of these coalitions and or their members with other community-based organizations.
- Promoting access to social and financial support services, e.g. to facilitate income generation, for persons affected by leprosy and their families.
- Supporting community-based rehabilitation for people with leprosy-related disabilities.
- Working towards abolishing discriminatory laws and promote policies facilitating inclusion of persons affected by leprosy.