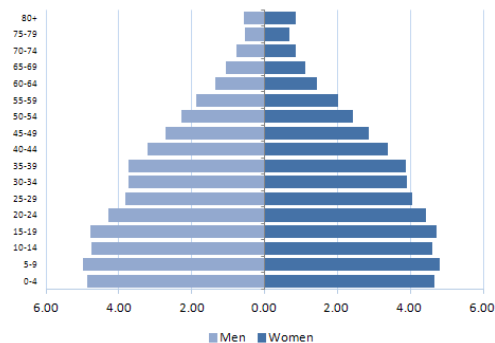


MEXICO

SOCIODEMOGRAPHIC INDICATORS¹



- **Total population:** 114,793,300
- **Average annual deaths:** 549,400
- **Life expectancy at birth (years):**
Total: 77 Male: 75 Female: 79
- **Adult literacy rate:** 93.4%
- **Gross national income US\$ per capita:** 8,960

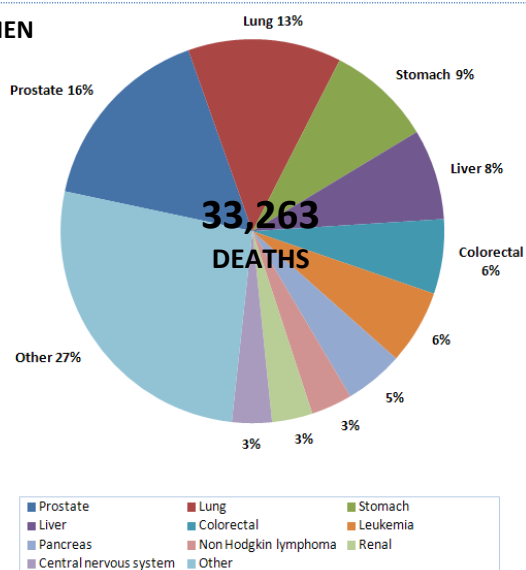
RISK FACTORS

Prevalence of:	Total (%)	Male (%)	Female (%)
Current tobacco smokers among adults ^{2,a}	17.0	27.0	8.0
Current use of any tobacco product among youth ²	19.8	21.6	17.7
Fruit and vegetable intake in adults ^{1,b}
Alcohol consumers, past 12 months ³	31.0	45.1	18.0
Low physical activity in adults ^{1,c}	37.7	37.1	38.4
Obesity among adults (BMI ≥ 30) ¹	...	26.1	35.6
HPV prevalence (women with normal cytology) ⁴	9.4

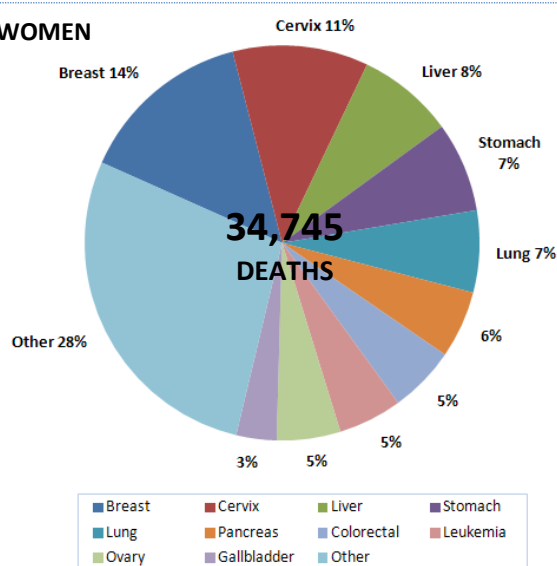
Notes: a: age-standardized prevalence of tobacco smoking in adults (15 years+), 2011; b: % who eat 5 or more servings of fruit and vegetables per day; c: % who are physically active for <600 met minutes; BMI: Body Mass Index; HPV: Human Papillomavirus.

CANCER MORTALITY PROFILE (2010)⁵

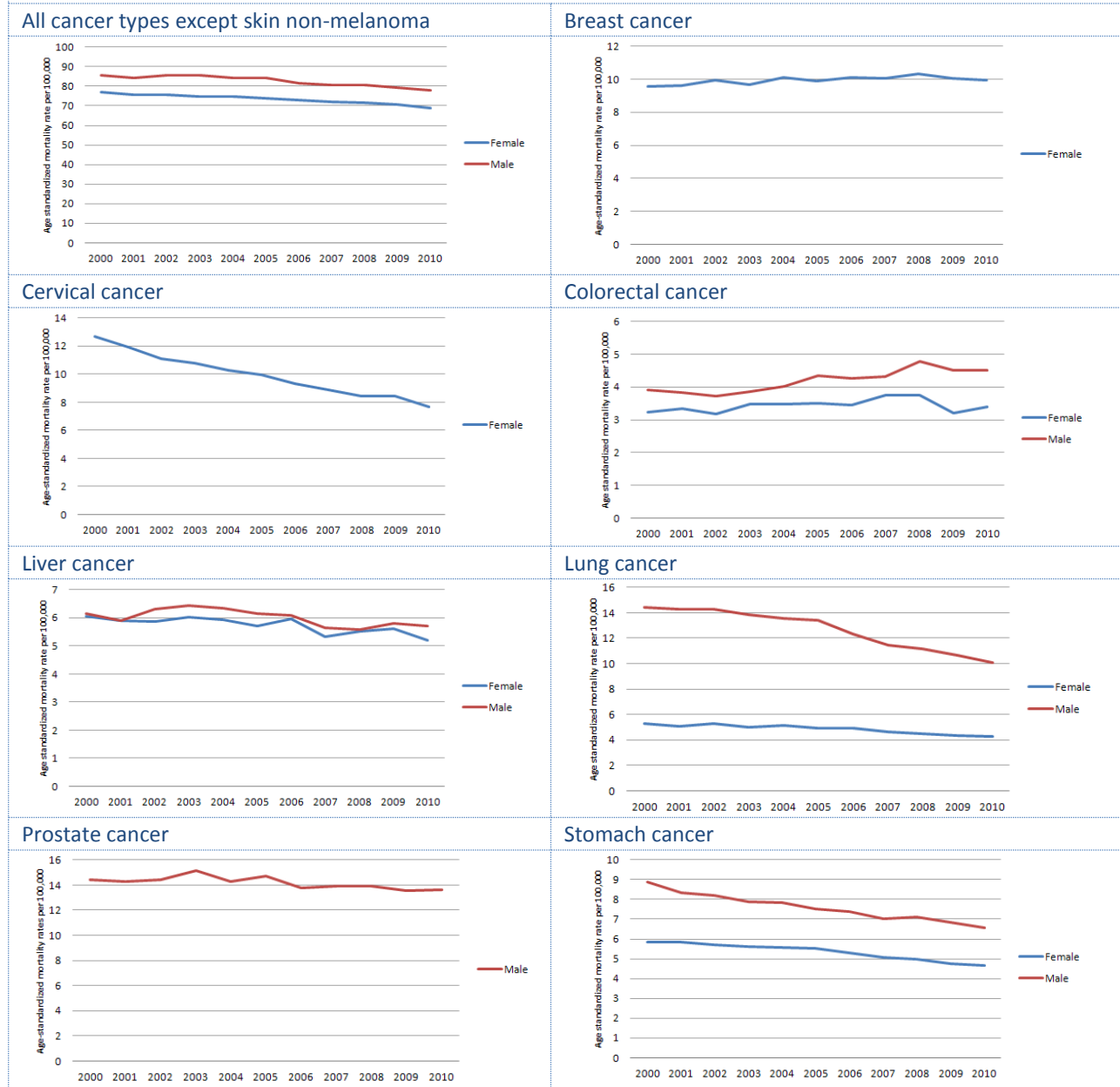
MEN



WOMEN



AGE-STANDARDIZED CANCER MORTALITY TRENDS (2000-2010)⁵



Average annual percent change (AAPC) of age-standardized mortality rates, by cancer type (2000-2010)⁵

Cancer type	Sex	Number of deaths (2010)	ASMR (2010)	AAPC
All cancer types	Male	33,263	78.30	-1.0*
	Female	34,745	69.39	-1.0*
Breast cancer		4,966	9.92	0.51*
Cervical cancer		3,864	7.69	-4.61*
Colorectal cancer	Male	2,090	4.90	1.98*
	Female	1,892	3.79	0.59
Liver cancer	Male	2,539	6.12	-0.93*
	Female	2,746	5.60	-1.16*
Lung cancer	Male	4,300	10.47	-3.7*
	Female	2,331	4.70	-1.96*
Prostate cancer		5,404	13.62	-0.73*
Stomach cancer	Male	2,944	6.98	-2.56*
	Female	2,556	5.08	-2.3*

Notes: ASMR: Age-standardized mortality rate; AAPC: Average annual percent change; *: The AAPC is significantly different from zero at p=0.05.

CANCER PLANS AND CANCER REGISTRATION⁶

National integrated NCD policy, strategy or action plan	
Is there a national integrated NCD policy, strategy or action plan?	Yes
Is cancer included in the overall NCD plan?	No
First year of implementation	1998
Cancer policy, strategy or action plan	
Is there a cancer policy, strategy or action plan?	No
First year of implementation	N/A
Cancer registry	
Is there a cancer registry?	Yes
Scope (national vs. subnational)?	National
Type of registry (population vs. hospital based)?	Hospital based
Last year with available data	2012

CANCER PRIMARY PREVENTION POLICIES

Tobacco control²	
Smoke free environments?	Smoking areas are allowed, but they must be isolated, completely enclosed, and under very strict technical conditions
Raised taxes on tobacco?	Taxes are 67% of the final price
Health warning labels about the dangers of tobacco?	Large warning with all appropriate features
Bans on tobacco advertising, promotion and sponsorship?	Complete absence of ban, or ban does not cover national television, radio and print media
Overweight and obesity prevention and control⁶	
Is there a policy, strategy or action plan for reducing overweight/obesity? (First year of implementation)	DK
Harmful use of alcohol prevention and control⁶	
Is there a policy, strategy or action plan for reducing harmful use of alcohol? (First year of implementation)	No
HPV vaccination in national immunization program?⁷	
Year of introduction/target age group/delivery strategy	2008/girls aged 9-12 years/mixed ^a
Estimated 3-dose coverage (calendar year)	67% (2010) ^b
HBV vaccination in national immunization program?⁸	
Year of introduction/target age group	1998/newborn-2m-6m
Estimated 3-dose coverage (calendar year)	99%

Note: a: Extended dosing schedules are being used at 0, 6 and 60 months; b: Two-dose coverage for the extended schedule adopted in 2009, targeting girls aged 9-12 years for the first two doses.

CANCER SCREENING

Cervical cancer	
Guidelines	
Are there cervical cancer screening guidelines available? ⁹	Yes
Guideline recommendations (Tests/age groups/frequency) ¹⁰	Pap test/25-34 years of age/every 3 years HPV test/35-64 years of age/every 5 years
Availability and coverage of screening services	
Cervical cytology⁶	Generally available in the public and the private sectors
Visual inspection with acetic acid⁶	DK
Screening coverage¹⁰	70.7% of women with a Pap test in the previous 3 years (2003)

CANCER SCREENING

Breast cancer	
Guidelines¹¹	
Are there breast cancer screening guidelines available?	Yes
Guideline recommendations (tests/age groups/frequency)	BSE/women aged 20 years and older/monthly CBE/women aged 25 years and older/annual Mammography/50-69 years of age (40-59 if high risk)/every 2 years
Availability and coverage of screening services	
Clinical breast examination⁶	Generally available in the public and the private sectors
Mammography⁶	Generally available in the public and the private sectors
Screening coverage	...
Colorectal cancer	
Guidelines¹²	
Are there colorectal cancer screening guidelines available?	Yes
Guideline recommendations (tests/age groups/frequency)	Fecal occult blood test or fecal immunological test/general population aged 50 years or older/annual
Availability and coverage of screening services	
Fecal occult blood test or fecal immunological test⁶	DK
Exam or colonoscopy⁶	DK
Screening coverage	...

CANCER TREATMENT AND PALLIATIVE CARE

Radiotherapy ¹³		Oral morphine ⁶	
Availability of services in the public health sector? ⁶	Generally available	Availability in the public health sector?	DK
Total energy teletherapy units/million inhabitants	1.1	Covered by health insurance or publically funded?	DK
Total radiotherapy centers	86	Appears in the national list of essential medicines?	DK
Radiation oncologists	205	Opioid consumption ¹⁴	
Medical physicists	38	Total morphine equivalence, per capita	8.76
Chemotherapy ⁶		Community/home care ⁶	
Availability of services in the public health sector?	Generally available	Are community/home care services available in the public sector for people with advanced stages of NCDs?	Generally available

Notes: ...: Information not available; N/A: Not applicable; DK: Don't know; m: months; BSE: Breast self-examination; CBE: Clinical breast examination.

Sources:

- (1) PAHO/WHO. Non communicable Diseases in the Americas: Basic Health Indicators 2011. Washington D.C, USA, 2011.
- (2) PAHO/WHO. Tobacco Control Report for the Region of the Americas, 2013. Washington D.C, USA, 2013.
- (3) WHO. Global Information System on Alcohol and Health, retrieved August 28, 2013, from <http://bit.ly/17zhuqZ>.
- (4) ICO. Information Center on HPV and Cancer, retrieved August 28, 2013, from <http://www.hpvcentre.net/>.
- (5) PAHO/WHO Mortality Database, 2012.
- (6) PAHO/WHO Survey on National Capacity for the Prevention and Control of Non-communicable Diseases, 2013.
- (7) Markowitz LE et al. Vaccine. 2012 Nov 20; 30 Suppl 5:F139-48.
- (8) PAHO/WHO Comprehensive Family Immunization Unit. Immunization Country Profiles, retrieved August 28, 2013, from <http://bit.ly/1dn4Td3>; Immunization Reported Coverage in the Americas, by vaccine, retrieved August 28, 2013 from <http://bit.ly/1dn59ZK>.
- (9) Ministry of Health of Mexico. Modificación a la Norma Oficial Mexicana NOM-014-SSA2-1994, Para la prevención, detección, diagnóstico, tratamiento, control y vigilancia epidemiológica del cáncer cérvico uterino. Diario Oficial, Jueves 31 de mayo de 2007.
- (10) Ministry of Health of Mexico. Subsecretaría de Prevención y Promoción de la Salud. Programa de acción específico 2007-2012. Cáncer cervicouterino, retrieved August 28, 2013 from: <http://bit.ly/vv8dcC>.
- (11) Ministry of Health of Mexico. PROYECTO de Modificación a la Norma Oficial Mexicana NOM-041-SSA2-2002, Para la prevención, diagnóstico, tratamiento, control y vigilancia epidemiológica del cáncer de mama; para quedar como Proyecto de Norma Oficial Mexicana PROY-NOM-041-SSA2-2009, Para la prevención, diagnóstico, tratamiento, control y vigilancia del cáncer de mama. Diario Oficial. Viernes 19 de noviembre de 2010.
- (12) Ministry of Health of Mexico. Guía de Práctica Clínica. Detección oportuna y diagnóstico de cáncer de colon y recto no hereditario en adultos en primero, segundo y tercer nivel de atención, México: Secretaría de Salud; 2009.
- (13) WHO/IAEA Directory of Radiotherapy Centers (DIRAC) Database, retrieved August 28, 2013 from <http://www.naweb.iaea.org/nahu/dirac/>.
- (14) University of Wisconsin. WHO Collaborating Centre for Pain Policy and Palliative Care, Opioid Consumption Database 2010, retrieved August 28, 2013, from <http://www.painpolicy.wisc.edu/countryprofiles/amro>.