

Meeting of the Amazon Network for surveillance
antimalarial drug resistance (RAVREDA) Annual
evaluation, Bolivia 2010

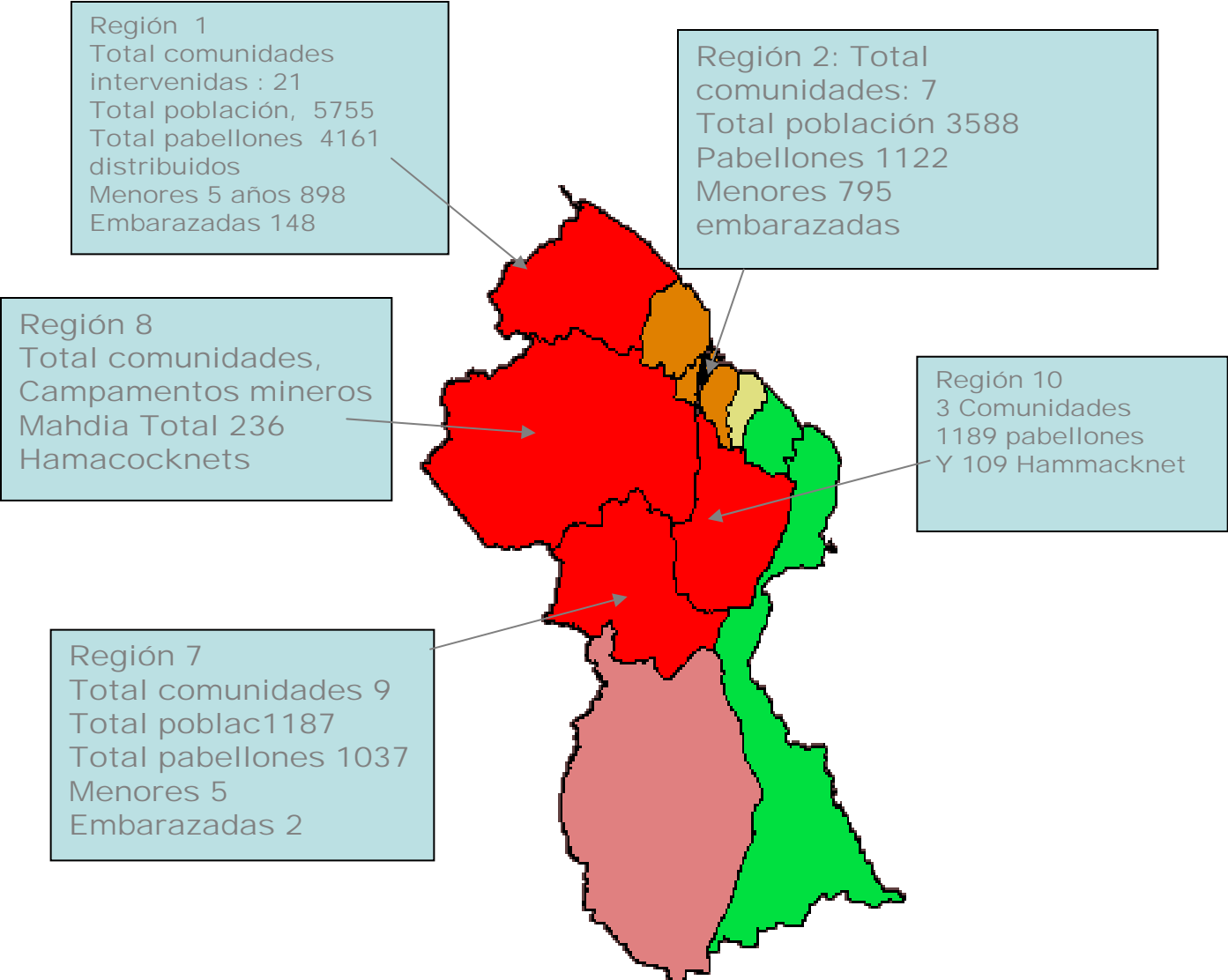
**Vector Control Strategy and entomology
surveillance**
**The distribution of LONG LASTING
IMPREGNATED BEDNETS IN GUYANA 2007-
2009**

The distribution of LONG LASTING

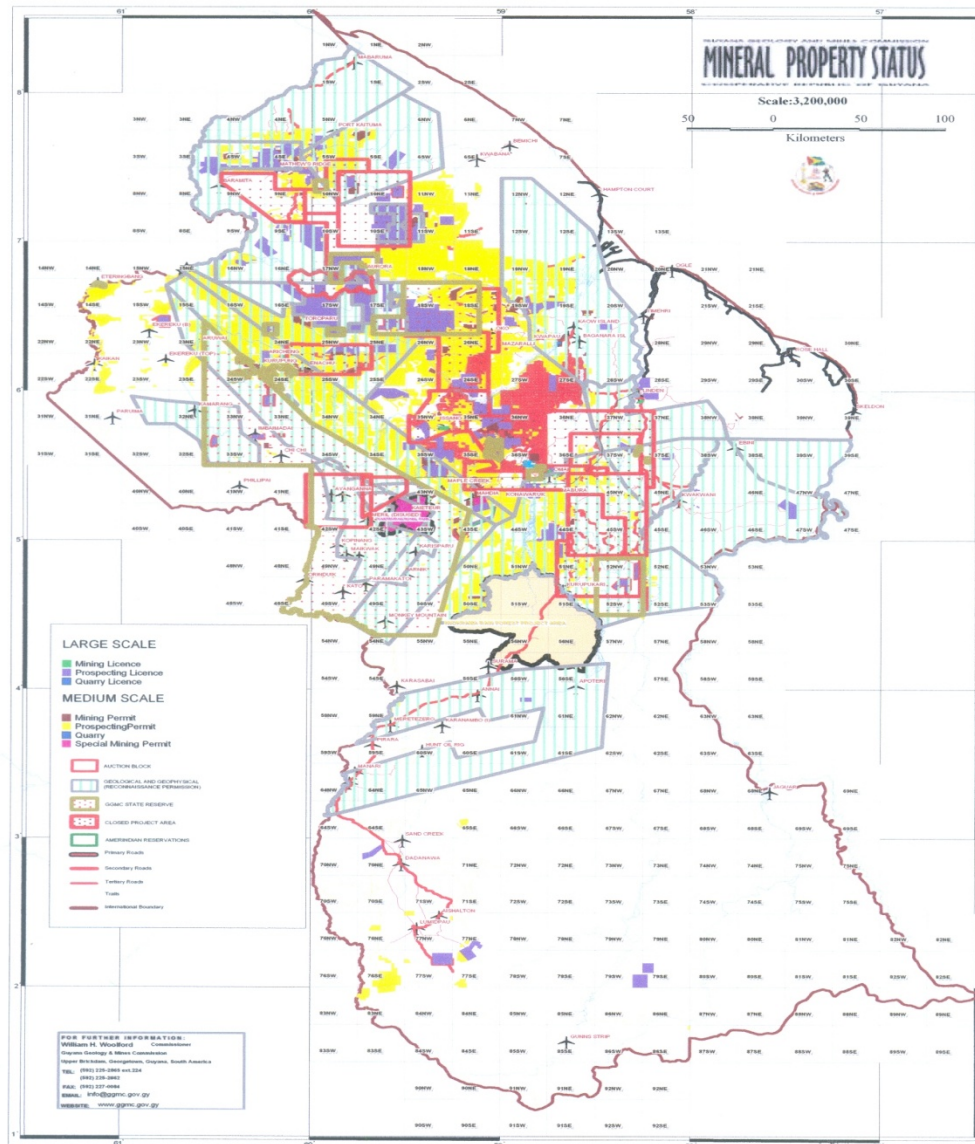
- As National Strategy for the control of malaria infection, the Government of Guyana has implemented as intervention, the use of Long Lasting Impregnated Nets in the endemic Regions of the country.

- Antecedentes encuesta 2005
 - 87 % tiene pabellones
 - 5 % son tratados,
 - 85 % mujeres embarazadas durmieron en pabellones la noche anterior a la encuesta
 - Fondo Global Distribuye Pabellones Impregnados desde 2005

Regiones y localidades donde fueron distribuidos los pabellones, durante 2007-2009



Mining and Logging activities in the endemics regions, Guyana



Increase of mining and logging operation between 15 – 20 %

Summary of nets distributed by region and by year, Guyana.

Region	2007	2008	2009	Total
1	2000	1635	526	4161
2	0	1120	2	1122
3	0	47	12	59
4	28	29	22	79
7	0	886	151	1037
8	0	174	62	236
9	0	362	145	507
10	780	351	58	1189
In vivo study			90	90
Total	2808	4604	1068	8480

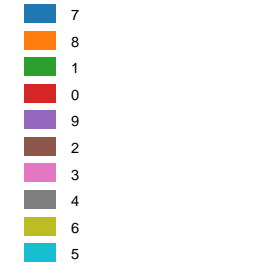
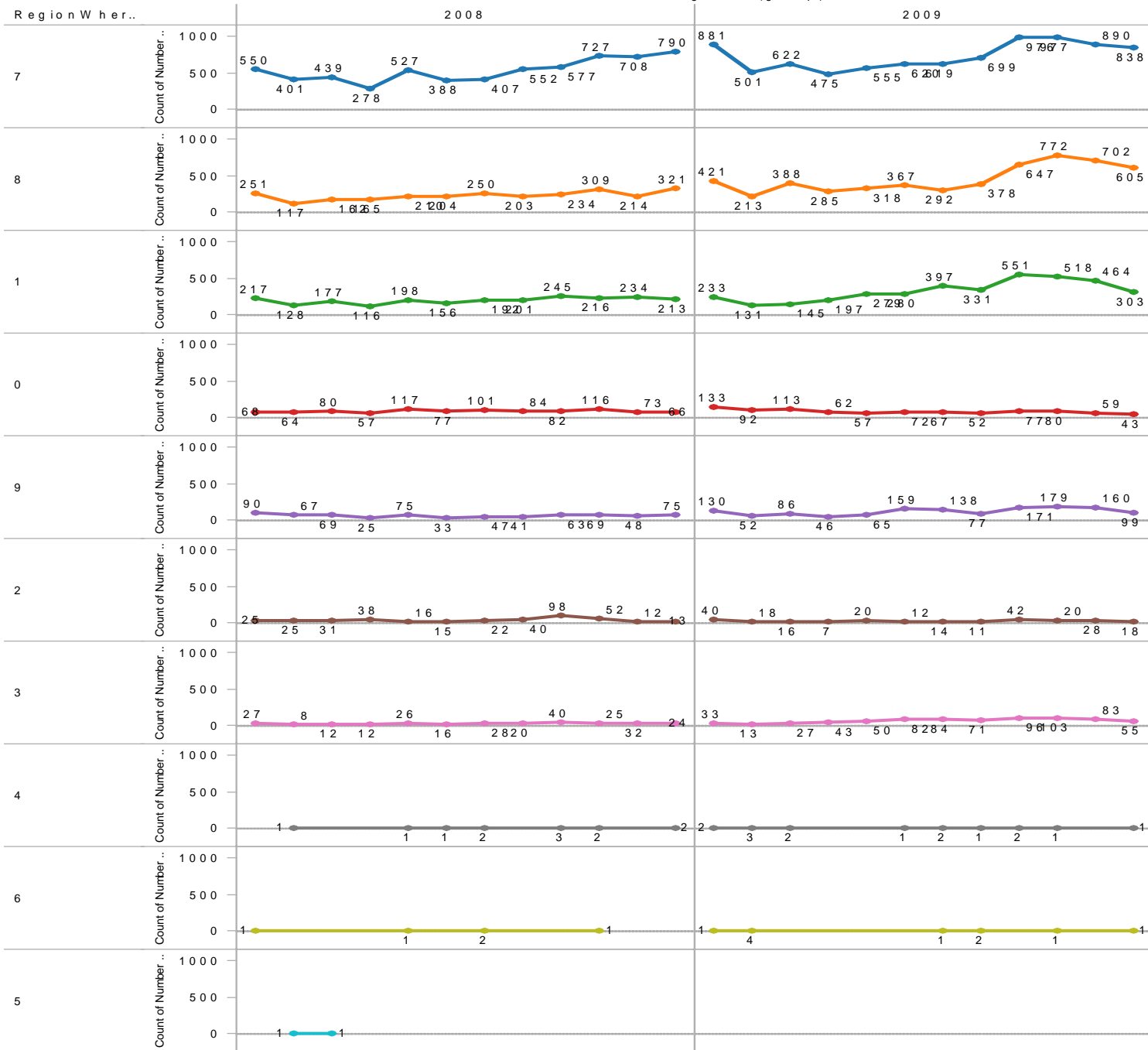
Criterios de selección de las localidades

1. alta carga de enfermedad y alta incidencia
2. acceso permanente a servicios de diagnóstico y tratamiento
3. sistema de información funcionando con automatización de datos de registros individuales (para monitoreo)
4. de preferencia donde haya evidencia (epidemiológica o entomológica) de transmisión intra - domiciliar
5. que el número de mosquiteros adquiridos para esta experiencia sea suficiente para cubrir todos los habitantes
6. aceptación del tipo de mosquiteros que fueron adquiridos para estas experiencias piloto

NC by weeks by year

YEAR / Ending Week (group)

RegionWhere (group)



Region 1- Estratificacion

Region1 2006				Region1 2007				Region1 2008				2009		
HEALTH_NM	Total	Falc	Gamet	HEALTH_NM	Total	Falc	Gamet	HEALTH_NM	Total	Falc	Gamet	HEALTH_NM	Total	Falc
Arakaka	1150	773	8	Arakaka	582	292	4	Big Hope River	186	102	7	Arakaka	502	267
Port Kaituma	604	328	4	Mazawini River	48	23	3	Arakaka	424	172	1	Barama River	257	119
Matthews Ridge	401	256	4	Port Kaituma	272	95		Barama River	261	127	2	Waini River	145	53
Pakera	279	176	2	Barama River	208	102	1	Waini River	122	56	6	Matthews Ridge	290	137
Barama River	161	75	1	Barima River	123	29		Port Kaituma	261	75	2	Port Kaituma	293	113
Barima River	127	31	1	Ianna River	99	25	1	Matthews Ridge	121	34	1	Baramita	224	94
Mabaruma	124	20		Mabaruma	106	15		Ianna River	86	16	2	White Creek	85	32
Five Star Landing	49	36		Matthews Ridge	60	31		Barima River	44	10	2	Five Star Landin	66	42
Kumaka 1	54	30		Big Hope River	42	21	1	White Creek	50	20		Barima River	122	11
White Creek	34	23		Waini River	44	19	1	Mabaruma	65	10		Ianna River	88	25
Aruka River	44	10		Pakera	32	12		Baramita	63	9	1	Big Hope River	64	29
Kumaka	30	13		Kumaka	34	10		Pakera	44	16		Bamboo Hill	58	32
Hosororo	38	7		Aruka River	46	3		Tiger Creek 1	36	19		Mabaruma	87	13
Morawhanna	23	17		Hosororo	38	4		Monosse River	37	13	1	Wauna Hill	97	4
Waramuri Moruca	31	11		White Creek	21	10		Bamboo Hill	21	13		Mazawini River	31	15
Waini River	26	8	1	Baramita	25	7		Mazawini River	28	7		Tiger Creek 1	25	15
Baramita	21	9		Monosse River	16	7		Five Star Landin	15	7		Aruka River	45	3
Wauna Hill	20	5		Kumaka 1	15	2	1	Kumaka	15	4		Pakera	33	7
Sebai	9	7		Tiger Creek 1	8	5		Torobaru River	11	3		Monosse River	23	12
Tassawini Landing	5	3	1	Mabaruma Hills	14	1		Aruka River	13	2		Hosororo	36	3
Red Hill	4	3		Annie River See Arawata	8	4		Aruka River 1	7	4		Barimanobo Cree	30	
Big Hope River	3	3		Barimanobo Creek	11	1		Wauna Hill	14		1	Kumaka 1	24	2
Barimanobo Creek	4			Bamboo Hill	10	1		Macaw Creek	8	3	1	Yakishuru Missi	15	1
Barabina Hill	4	1		Imbotero River	7	2		Hosororo	10	2		Kumaka	10	1
Koriabo	4	1		Yarikita River	7	2		Wainamu River	3	3		Imbotero River	9	1
Manawarin Amer. V	4			Five Star Landing	6	2		Kumaka 1	5	2		Kokerite Amer.	7	2
Kwabanna Amer. V	3			Torobaru River	4	3		Yakishuru Missio	6	1		Tassawini Land	7	2
Red Hill Amer. Vil.	3	1		Barabina Hill	7			Kariako Mission	6	1		Pipiani Creek	8	1
Bamboo Hill	2	1		Tassawini Landing	5	2		Yarikita River	3	2		White Creek	6	2
Assakata Amer. Vil.	2	1		Waramuri Moruca Amer	4	2	1	Goldbead Creek	5	1		Tobago Hill	6	
Hotoquai Amer. Vil.	2			Wanaina	4	2		Kokerite Amer. V	2	2		Barabina Hill	6	1
Koriabo Amer. Vil.	2			Aranka River 1	5	1		Imbotero River	4			Wauna River	4	2
Wanaina	1			Koriabo	5			Barimanobo Cree	3			Hobodia Amer.	5	
Waramuri Mission	1			Morawhanna	5			Wanaina	3	1		Red Hill	5	
Haimarakabra Rive	1			Wauna River	4	1		Assakata Amer. V	3	1		Morawhanna	5	
Kwabanna	1	1		Hobodia Amer. Vil.	4	1		Morawhanna	3	1		Chinese Landin	5	
Kobarimo Hill	1			Kariako Creek	3			Annie River See	3	1		Turtle River	3	2
Santa Crus	1			Haimarakabra River	3	1		Manawarin Amer	3			Kariako Mission	4	
Hobodia Amer. Vil.	1			Kobarimo Hill	3			Mabaruma Creek	2			Manawarin Ame	4	
				Yakishuru Mission	3	1		Tassawini Landin	2			Mabaruma Cree	4	
				Macaw Creek	3	1		Waini Point	2	1		Koriabo	3	
				Ananu River	2			Red Hill	2	1		Kamwatta Hill A	3	
				Red Hill	2	1		White Creek	1	1		Assakata Amer.	3	
				Goldbead Creek	2	1		Wauna River	1			Yarikita River	3	
				Chinese Landing Amer.	2			Barabina Hill	1			Waini Point	3	1
				Wauna Hill	2			Warapoka Amer.	1	1		Sebai	3	
				Shell Beach - See Kamw	1			Baramanni River	1			Kariako Creek	2	1
				Arapai River	1	1		Kwabanna	1			Shell Beach - S	2	1
				Stone Creek	1	1		Sebai	1			Waramuri Moru	1	
				Kwabanna	1	1		Hobodia Amer. V	1			Wanaina	1	1
				Hotoquai Amer. Vil.	1			Rock Landing	1	1		Wainamu River	1	1
				Kokerite Amer. Vil.	1			Kamwatta Hill Am	1			Baramanni Rive	1	
				Pipiani Creek	1	1		Kobarimo Hill	1			Torobaru River	1	
				Wainamu River	1			Komung	1			Mabaruma Hills	1	
				Chinese Creek	1	1		Haiana River	1			Miburebaru Rive	1	
				Tobago Hill	1			Chinese Landing	1			Kobarimo Hill	1	
				Komung	1							Goldbead Cree	1	
												Haimarakabra R	1	
												Kwabanna	1	
												Koriabo Amer. V	1	

Localidades seleccionadas para la distribución de Mosquiteros, Región 1, Guyana 2007.

Localidades	# Mosquiteros distribuidos		# menores de 5 años	# embarazadas	# de habitantes sexo masculino	# de habitantes sexo femenino	Total habitantes
	Bed	Ha					
Mabaruma	488	48	257	56	770	837	1607
MCH	160	0	188	41	338	318	656
Hobo Hill	85	0	35	6	110	104	214
Port Kaituma							
3miles	35	0	18	2	53	47	100
Oronoque	129	0	63	7	165	130	295
4 miles	41	0	16	0	64	64	128
5 miles	21	0	17	0	36	31	67
Port Kaituma	117	0	34	4	88	93	181
Canal Bank	243	0	138	12	379	350	729
Road 3miles	78	0	30	5	100	94	194
White Creek	11	67	0	0	74	9	83
Sebai	80	0	16	9	151	144	295

Localidades seleccionadas para la distribución de Mosquiteros, Región 1, Guyana 2007.

Localidades	# Mosquiteros distribuidos		# menores de 5 años	# embarazadas	# de habitantes sexo masculino	# de habitantes sexo femenino	Total habitantes
	Bed	Ha					
Arakaka							
4 miles	91	0	12	2	107	61	168
Purple Heart	23	0	3	0	17	16	33
Manacuru	24	0	7	0	42	27	69
Arakaka Compound	96	103	20	2	160	111	271
World Bank & Annie Creek	32	0	10	0	39	31	70
14 Miles	150	0	14		112	35	147
Arakaka Compound	55	15	10	0	84	54	138
Monasee backdam	21	97	10	0	76	44	120
Mathews Ridge = Pakera							
Big Creek	0	70	0	0	63	7	70
Eye Lash	0	115	0	2	110	10	120
Total	1980	515	898	148	3138	2617	5755

Bed= mosquitero de Cama, Ha= mosquitero de Hamaca., MCH= Maternal & Child Health

Region 2 2006				Region 2 2007				Region 2 2008				2009			
HEALTH_NM	Total	Falc	Gamet	HEALTH_NM	Total	Falc	Gamet	HEALTH_NM	Total	Falc	Gamet	HEALTH_NM	Total	Falc	Gamet
Friendship	77	31	1	Charity	79	20		Charity	33	11	3	Friendship	43	17	2
Charity	76	25		KARAWAB	76			Friendship	65	17		Pomeroon	46	13	1
KARAWAB	102	7		Pomeroon River	11	5		KARAWAB	154	2		Supenaam	22	8	
Supenaam River	16	9		Friendship	22	2		Pomeroon River	20	6	2	Charity	19	5	
Akawini Amer. Vil.	12	5	1	Saint Monica Mission	19	2		Moruka River	8	7		KARAWAB	16	1	
Wakapau Amer. Vil.	10	5		Akawini Amer. Vil.	9	3	1	Hackney	9	2		Moruka Riv	5	3	
Hackney	6	3		Wakapau Amer. Vil.	6	3		Cozier Canal	6	2		Tenez Ferr	9		
Saint Monica Mission	8	2		Hackney	5	3	1	Akawini Amer. Vil.	3	2		Hackney	4	2	
Mashabo Amer. Vil.	4	3	1	Moruka River	9	1	1	Supenaam River	11	1		Providence	6	1	
Suddie	4	3		Supenaam River	4	2		Bethany Amer. Vil.	6	1		Trybest	3	2	
Siriki	3	2		Playfair	5	1		Siriki	4	1		Akowitz Car	5	1	
Lindo Creek	1	1		Bounty Hall	4	1		Mashabo Amer. V	3			Akawini Ar	5	1	
Queenstown Vill. Dist.	1			Cozier Canal	4			Onderneeming 2	3			Wakapau A	2	2	
Aberdeen	1			Lima	4			Saint Monica Miss	3			Kabakabur	2	2	
DREDGE CREEK	1			Barama Profit	3	1		Playfair	2	1		Belle Vue 2	4		
Dartmouth	1			Onderneeming 2	3			Wakapau Amer. V	2	1		Dublin	3	1	
Bethany Amer. Vil.	1			Kabakaburi Amer. Vil.	3	1		Aberdeen	2			Mashabo	3		
Anna Regina	1	1		Tenez Ferme	3	1		Mainstay	2			Mainstay	3	1	
Lima	1			Siriki	3			Adventure	1			Capoey La	2		
				Dublin	2			Better Hope	1			Tapakuma	2		
				Abrams Creek	2			Bush Lot 2	1	1		Bethany Ar	2	1	
				Hope and Success or Cozie	2			Abrams Creek	1			Playfair	2		
				Diamond 2	2			Capoey Lake Villa	1			Saint Moni	2		
				Greenfield	2	1		Dartmouth	1			Unity	1		
				Saint Denys Mission	2			Dublin	1			Anna Regi	1	1	
				Mashabo Amer. Vil.	2	1		Jackson	1	1		Bounty Hal	1		
				Perseverance	2	1		Suddie	1			Siriki	1	1	
				Aberdeen	2	1		Tenez Ferme	1	1		Onderneer	1		
				Phoenix Park	2			Trybest	1			Jackson	1		
				Heathfield	2			Huis t' Dieren	1			Mashabo A	1		
				Vilvoorden	1							Abrams Cr	1		
				Anna Regina	1							Suddie	1	1	
				Unity	1										
				Bethany Amer. Vil.	1	1									
				Trybest	1										
				Capoey Lake Village	1										
				Dumbarton Castle	1	1									
				Cullen	1										
				Dartmouth	1	1									
				Westbury	1	1									
				Opposition	1										
				Enmore	1										
				Richmond 2	1	1									
				Henrietta 2	1										
				Tapakuma (St. Denys) Ame	1										

Localidades seleccionadas para la distribución de Mosquiteros, Región 2, Guyana 2007

Localidad	Ocupación principal	# y tipo de mosquitero entregado		# de menores de 5 años	# embarazadas	# miembros del sexo masculino	# miembros del sexo femenino	población total.
		Bed	Ha					
Cabacaburi	farmers & Miner.	120	0	127	10	246	294	540
Wakapoa Mora		120	0	144	11	221	330	551
Friendship Canal		130	0	89	18	189	227	416
Wakapoa Mission		120	0	54	8	240	207	447
St Monica		120	0	104	3	210	206	416
Hackney		237	0	145	23	349	361	710
Karawab		125	0	132	9	244	264	508
Total			972	0	795	82	1699	1889

Region 7 2006				Region 7 2007				Region 7 2008				2009			
HEALTH_NM	Total	Falc	Gamet	HEALTH_NM	Total	Falc	Gamet	HEALTH_NM	Total	Falc	Gamet	HEALTH_NM	Total	Falc	Gamet
Dog Point	1115	567	11	Puruni River	891	408	10	Omai	652	393	8	Puruni River	565	385	2
Arimu Mine	459	267	3	Arimu Mine	467	251	4	Puruni River	595	326	7	Mazaruni River	268	140	7
Serenamu River	257	140	7	Cuyuni River	347	130	5	Arimu Mine	499	337	3	Arimu Mine	431	353	1
Kurupung	255	136	3	Quartzstone Landing	215	94	6	Cuyuni River	258	129	4	Cuyuni River	307	198	3
Issano	271	139	2	Issano	291	146	3	Issano	316	173	2	Aranka River	346	290	1
Oranapai Landing	316	172		Mazaruni River	319	130	3	Aranka River	240	159	3	Issano	378	261	1
Bartica - Potaro Road	131	79	3	Serenamu River	208	105	3	Mazaruni River	216	97	3	Omai	289	233	
Eping	133	57		Aranka River	174	111	2	OKO RIVER	239	131	2	OKO RIVER	253	188	
Tumareng	80	40		Omai	125	44	3	Quartzstone Landing	208	111	1	Arangoy River	174	106	3
Quartzstone Landing	85	35		Bartica - Potaro Road	50	14	4	Tamakay	122	69	1	Tamakay	219	162	
Honey Camp	81	34		Arangoy River	72	38	3	Tiger Creek	107	70		Blackwater River	149	123	2
Puruni River	71	32		Enachu	55	32	3	Rock Creek	56	23	2	Quartzstone Lan	151	106	
Butakari	59	31		Kurupung	142	55	1	Honey Camp	86	51		Tiger Creek	134	103	
Mazaruni River	63	28		Tiger Creek	95	40	1	Arangoy River	81	53		Itaballi Rapids	55	27	3
Maramara Landing	42	26		Honey Camp	77	42		Takutu River	78	51		Takutu River	81	52	
Wineperu	53	18	1	Tamakay	89	35	1	Kurupung	73	40		Serenamu River	56	46	
Arawak Matope Fall	45	19		Oranapai Landing	72	40		Serenamu River	69	38	1	Rock Creek	52	33	1
Baramalli River	39	21		Arawak Matope Fall	79	36	1	Bartica - Potaro Road	64	28		Kurupung	60	27	
Jawalla	51	12	1	Takutu River	68	31		Bartica Village District	57	32		Bartica - Potaro	63	23	
Pipilipai	52	6		Mariwa Fall	54	21		Imbaimadai	50	36		Waiamu River	44	35	
Kamarangken Settlem	28	11		OKO RIVER	46	22		Blackwater River 7	56	31		Imbaimadai	45	34	
Isseneru	21	10		Blackwater River 7	36	20		Itaballi Rapids	48	16	1	Bartica Village D	47	26	
Haimarakwa Creek	20	7		Bartica Village District	41	17		Issano Junction	39	17	1	Kaikan	36	33	
Bartica Village District	16	9		Eping	44	15		Enachu	35	16	1	Arimu Fall	38	28	
Imbaimadai	21	6		Itaballi Rapids	41	16		Batavia Island	29	18		Mariwa Fall	37	25	1
Tiger Creek	15	8		Tumareng	41	14		Waiamu River	32	16		Semang River	39	22	
Aranka River	13	8		Tiger River	28	14		Mariwa Fall	26	14		Honey Camp	34	25	
Cuyuni River	18	5		Rock Creek	24	11		Omai Landing	22	16		Apaikwa	32	25	
Kamarangkeng Settlem	16	6		Pashanamu River	22	7		Eping	26	12		Arawak Matope	20	18	
Kamarang	16	5		Lower Kamaria Landing	15	8		Wineperu	29	10		Wineperu	23	14	
Cuyuni - Mazaruni Reg.	9	6		Maramara River	12	9		Morabisi River	18	13	1	Isseneru	22	13	
Maramara River	6	5		Apaikwa	16	6		Saint Johns Creek	21	11		Enachu	19	14	
Kartabu - Puruni Road	3	3		Baramalli River	17	5		Oranapai Landing	23	9	1	Omai Landing	16	14	
Kaikan	6	1		Kaikan	19	4		Olive Creek	17	7		Bartica Point	18	10	
Apaikwa	3	2		Wineperu	15	5		Kumakuma Creek	12	8		Olive Creek	18	10	
Itaballi Rapids	4	1		Isseneru	14	5		BARLOWE LANDING	16	5		Eteringbang Fall	16	9	
Okuma River	3	1		Olive Creek	15	4		kumaka landing	10	8		Batavia Island	13	8	
Olive Creek	3			Perenong River	12	5		Baramalli River	9	8		Issano Junction	12	8	
Agatash	2	1		Imbaimadai	14	4		Perenong River	8	8		Kumaka River 7	12	8	
Wildcow Creek	2	1		Maramara Landing	11	5		Arawak Matope Fall	11	4		Oranapai Landin	11	8	
White Kaburi River	2	1		Semang River	16	2		Kaburi Falls	8	5		Kopang River	11	8	
Waramadong	2	1		Batavia Island	14	2		Toroparu River	11	3		Perenong River	11	7	
Paruma Creek	2			Eteringbang Fall	7	4	1	Isseneru	9	4		Toroparu River	9	8	
Enachu	2	1		Haimaraka River	9	3		Saint John Rapid	9	3		Komang River	8	8	
Qwebanang	1			Waiamu River	9	3		Apaikwa	9	3		BARLOWE LANI	10	5	
Takutu River	1	1		Okuma River	11	2		Anarika River	7	4		Arau	10	4	
Tamakay	1	1		Kambaru River	12			Kaikan	6	4	1	Haimaraka River	7	6	

Localidades seleccionadas para la distribución de Mosquiteros, Región 7, Guyana 2007

Localidades	Ocupación principal	Mosquiteros distribuidos	# menores de 5 años	# embarazadas	# miembros del sexo masculino	# miembros del sexo femenino	población total.
		Ha					
Perenung	Mineros	18	1	1	12	6	18
Serenamu		26	0	0	12	1	13
Tamakay		59	2	1	54	5	59
Red Hill		2	1	0	2	0	2
Enachu		16	1	0	14	2	16
Barlow Landing		4	0	0	2	2	4
Issano		19	0	0	0	19	19
Puruni		50	0	0	50	0	50
Morobisi Creek		6	0	0	6	0	6
Total		200	5	2	152	35	187

Ha= mosquiteros de Hamaca.

Region 8 2006				Region 8 2007				Region 8 2008				2009			
HEALTH_NM	Total	Falc	Gamet	HEALTH_NM	Total	Falc	Gamet	HEALTH_NM	Total	Falc	Gamet	HEALTH_NM	Total	Falc	Gamet
Mahdia	1708	1023	19	Mahdia	876	461	10	Mahdia	979	570	10	Mahdia	1396	850	8
Apanachi	894	480	6	Tumatumari	49	23	6	Konawaruk	407	216	7	Konawaruk	670	453	2
Konawaruk	241	145	1	Konawaruk	277	95	2	Siparuni River	166	57	5	Siparuni River	110	58	1
MICOBIE VILLAGE	49	21	5	Siparuni River	110	43	4	Tumatumari	31	17	3	Potaro River	80	46	1
Tiger Falls	231	128	1	MICOBIE VILLAGE	61	23	3	Tiger Falls	50	37		Mowasi Landing	56	50	
Kopinang Amer. Vil.	282	34		Salbora Creek	43	32		Potaro River	47	20		Tumatumari	58	41	
Salbora Creek	137	89		Tiger Falls	34	23	1	MICOBIE VILLAGE	35	11	1	Tiger Falls	59	37	
Maikwak	101	17	2	Maikwak	61	4		Maikwak	35	7		MICOBIE VILLAGE	58	30	
Kurupukari Falls	90	26	1	Potaro River	38	13	1	Kato	32	8		Noitgedacht River	34	24	
Kaibarupai Amer. Vil.	82	18		Chenapau	52	3		Saint Elizabeth Creek	21	14		Kato	42	15	
Potaro River	56	26		Kurukabaru	37	2		Salbora Creek	21	13	1	Saint Elizabeth Cre	29	19	
Tumatumari	47	19	1	Saint Elizabeth Creek	16	7	1	Mowasi Landing	16	7		Quintette Creek	17	17	
Kato	42	16		Kopinang Amer. Vil.	24	1		Minnehaha River	8	7		Kurupukari Falls	22	11	
Kurukabaru	42	12		Arasawa River	14	2		Paramakatoi Amer. Vil.	13	2	1	Kuribrong River	18	12	
Waipa Amer. Vil.	38	8	1	Potaro Landing	9	4		Jumbi Creek	6	6		Maikwak	22	5	
Siparuni River	23	11		Chiung River	6	4		Kuribrong River	10	3		BAMBOO CREEEK	11	9	
Kamana	20	7		Kuribrong River	7	3		Kopinang Amer. Vil.	8	4		Salbora Creek	12	8	
Saint Elizabeth Creek	14	9		Amatuk Fall	5	4		Kurupukari Falls	8	3		Muruwa River	9	7	
Noitgedacht River	14	8		Greenheart Stream	4	4		BAMBOO CREEEK	6	3		Minnehaha River	10	6	
Chenapau	23	2		Kato	4	3		Noitgedacht River	5	3		Jumbi Creek	8	6	
Paramakatoi	14	1		Haimara Creek	6	1		Kaieteur Fall	5	3		North Fork River	8	6	
Tumong River	10	3		Kurupukari Falls	6			Chenapau	6			Paramakatoi	16		
Monkey Mountain Amer. Vil.	9	3		Mowasi Landing	5	1		Ireng River 8	4	2		Gem Creek	9	5	
North Fork River	6	4		Snake Creek See Okui Creek	4	1		Kurukabaru	4			Morabunta Creek	8	5	
Paramakatoi Amer. Vil.	6	2		Ireng River 8	4	1		North Fork River	2	2		Kopinang Amer. Vi	11	3	
Chiung River	7			Waipa Amer. Vil.	4			Kangaruma	2	2		Turtle Creek	6	6	
Mowasi Landing	3	3		Monkey Mountain Amer. Vil.	2	2		Mahdia River	3	1		Kurukabaru	11	1	1
Kangaruma	6	1		Noitgedacht River	3	1		Tappa River	3	1		Tusenen River	6	4	
Puwa	5			Echerak River	3			Waraputa	3			Kaibarupai Amer. V	6	2	
Tusenen River	3	2		Itabac Amer. Vil.	2			Echerak River	2			North Fork River 8	4	3	
Jumbi Creek	2	2		Tappa River	2			Waipa Amer. Vil.	2			Potaro Landing	4	3	
BAMBOO CREEEK	3	1		Minnehaha River	2		1	Chiung River	1	1		Chenapau	7		
Kanapang Amer. Vil.	2			Karabaru Rapid	2	1		Garraway Stream	1	1		Kangaruma	3	3	
Kato Amer. Vil.	2			Irene River	2	1		Itabu Fall	1	1		Ichaura	3	3	
Kaieteur Fall	2	1		Potaro Konawaruk Road	2			Mamuri Creek	1	1		Echerak River	5		
Kuribrong River	1			Kaibarupai Amer. Vil.	2	1		Amatuk Fall	1	1		Morakabang Moun	4		
Garaway Landing	1	1		Paramakatoi	2	1		Muruwa River	1	1		Chiung River	4		
Potaro Landing	1			North Fork River	2	1		Gem Creek	1	1		Paramakatoi Amer	3	1	
Mahdia River	1		1	Mowasi Mountain	2			Paramakatoi	1			Eagle Mountain	2	1	
				BAMBOO CREEEK	2	1		Potaro Landing	1	1		Puwa	2		
				Waraputa	2			Shirabaru River	1	1		Yawong River	2		
				Good Hope River	1			Sukabi Creek	1			Tappa River	2	1	
				Stone River	1			Taruka Amer. Vil.	1			Monkey Mountain	2		
				Ichaura	1	1		Tusenen River	1	1		Stone River	2	1	
				Tumong River	1			Rocky Creek	1	1		Tumong River	1		
				Itabu Fall	1			Marina Fall	1			Shirabaru River	1		
				Jumbi Creek	1			Eagle Mountain	1			Monkey Mountain	1	1	
				Mahdia River	1	1		Orinuku River	1	1		Greenheart Stream	1	1	
				Kamana	1			Monkey Mountain Amer.	1			Amaila Fall	1		
				Kanapang Amer. Vil.	1							Potaro Konawaruk	1	1	
				Parupa Creek	1	1						Waterdog River	1	1	
				Kuruabaru Amer. Vil.	1							Kaieteur Fall	1	1	
				Yawong River	1							Kamana	1		
				Mamuri Creek	1							Kanapang	1	1	
				Kaieteur Fall	1							Garraway Landing	1	1	

Region 10 2006				Region 10 2007				Region 10 2008				2009			
HEALTH_NM	Total	Falc	Gamet	HEALTH_NM	Total	Falc	Gamet	HEALTH_NM	Total	Falc	Gamet	HEALTH_NM	Total	Falc	Gamet
Kurakura	315	182	4	Mabura Hill	464	171	10	Mabura Hill	572	322	8	Mabura Hill	371	222	3
Blackwater River	32	17		Blue Mountain	80	45	1	Seballi River	55	23		Blue Mountain	48	34	2
Kumaru	22	7	1	Seballi River	24	9		Blue Mountain	37	27		Seballi River	41	15	
Mabura Hill	22	7		Rockstone	16	6	1	Blackwater River	10	5		Gold Creek	21	15	
Bamboo	16	8	1	Gold Creek	11	4	1	Gold Creek	6	4		Kwakwani	39	4	
Rockstone	14	3		Blackwater River	10	4		Kumaka 0	7	3		East Demerara Riv	11	10	
Godt Zeit Alles	10	4		Bamboo	14	2		Kwakwani	7	2		Blackwater River	9	8	
Ituni	6	5		Bamboo Creek	10	2		East Demerara River	5	3		Madray River	9	7	
Kwakwani	6	5		East Demerara Ri	7	3		Yaya Landing	5	3		Rockstone	8	6	
Bamboo Creek	10	2		Black Creek	5	3		Madray River	5	2		Muritaro	9	4	
Yaya Landing	6	3		Muritaro	6			Mambaka River	5	2		Ituni	7	4	
Warabaru Creek	6	3		Yaya Landing	4			Ituni	6	1		Anarika River0	8	3	
Pott Falls Landing	4			Ituni	4	1		Rockstone	4	2		Yaya Landing	4	3	
Muritaro	3	1		Linden	3			Reg. No. 10 or Uppet	5			Linden	4	3	
Malali	1			Kwakwani	3			Anarika River0	3	2		Malali	5	2	
Aurora	1			Malali	3			Muritaro	4	1		Great Fall or Ororo	5		
Haimaruni	1	1		Seba	2	1		Hururu	3	1		Old England	4		
				Aurora	2	1		Black Creek	2	1		Bamboo	4		
				Kurakura	2	1		Bamboo	2	1		Aurora	4	1	
				Arawai Channel	1			Canister Falls	2	1		Goshen	2	2	
				Madray River	1	1		Riverview	2			Arauma River	2	2	
				One Mile	1	1		Richmond Hill 0	2	1		Kimbia River	2	2	
				Pott Falls Landing	1	1		Appaparu River 0	1			Dakari Creek	2	1	
				Unabaru Creek	1			Itabru Hill	1	1		Ibaru River	2	1	
				Warapai Creek 0	1	1		Goshen	1			Waraputa Fall	2		
				Ayawa Creek 0	1			Waraputa Fall	1			Appaparu River 0	1	1	
								Warau Island	1	1		Riverview	1		
								Old England	1	1		Bamboo Creek	1		
								Kimbia River	1			Black Creek	1	1	
								Yurowaballi Creek	1			Kumaka 0	1		
								Bamboo Creek	1	1		New Caracas	1	1	
								Great Fall or Ororo M	1			Maraka Creek	1	1	
								Aurora	1			Mambaka River	1	1	
								Arawai Channel	1			Lindo River	1		
								One Mile	1			Itabru Hill	1	1	
												One Mile	1	1	

Trend of malaria by locality

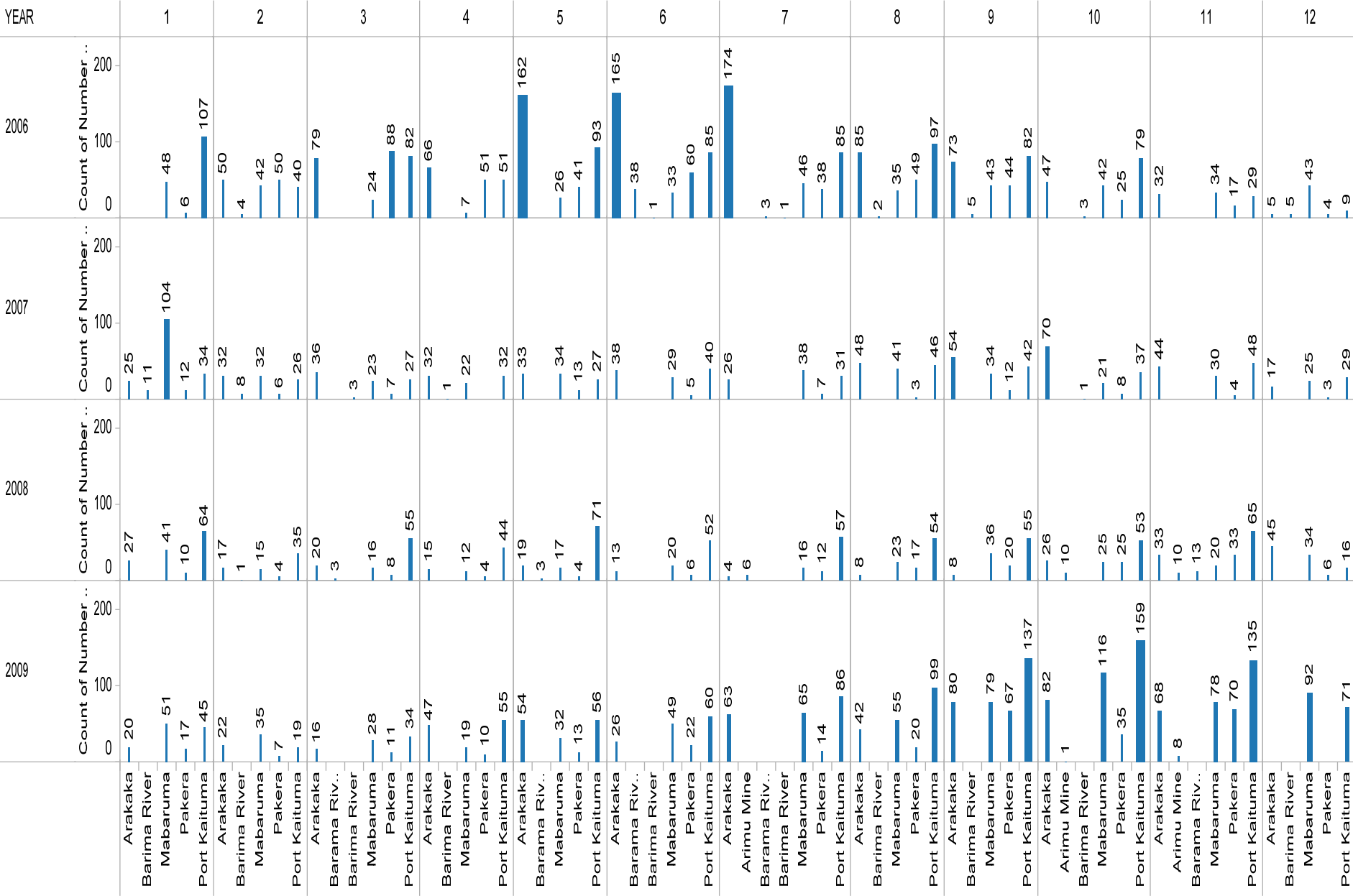
TOP 15 Where infected

Where Infected	Region Where..	YEAR		
		2007	2008	2009
Arakaka	1	628	501	726
Arimu Mine	7	470	643	813
Cuyuni - Mazaruni Reg. or R..	7	3	3	4
Cuyuni River	7	310	279	454
Issano	7	309	371	590
Konawaruk	8	286	508	1,000
Kurupung	7	152	74	41
Mabura Hill	10	494	642	431
Mahdia	8	929	1,164	2,487
Matthews Ridge	1	62	129	436
Mazaruni River	7	322	216	332
Port Kaituma	1	278	298	369
Puruni River	7	930	674	880
Quartzstone Landing	7	219	252	302
Saint Ignatius Amer. Vil. (Far..	9	71	28	11

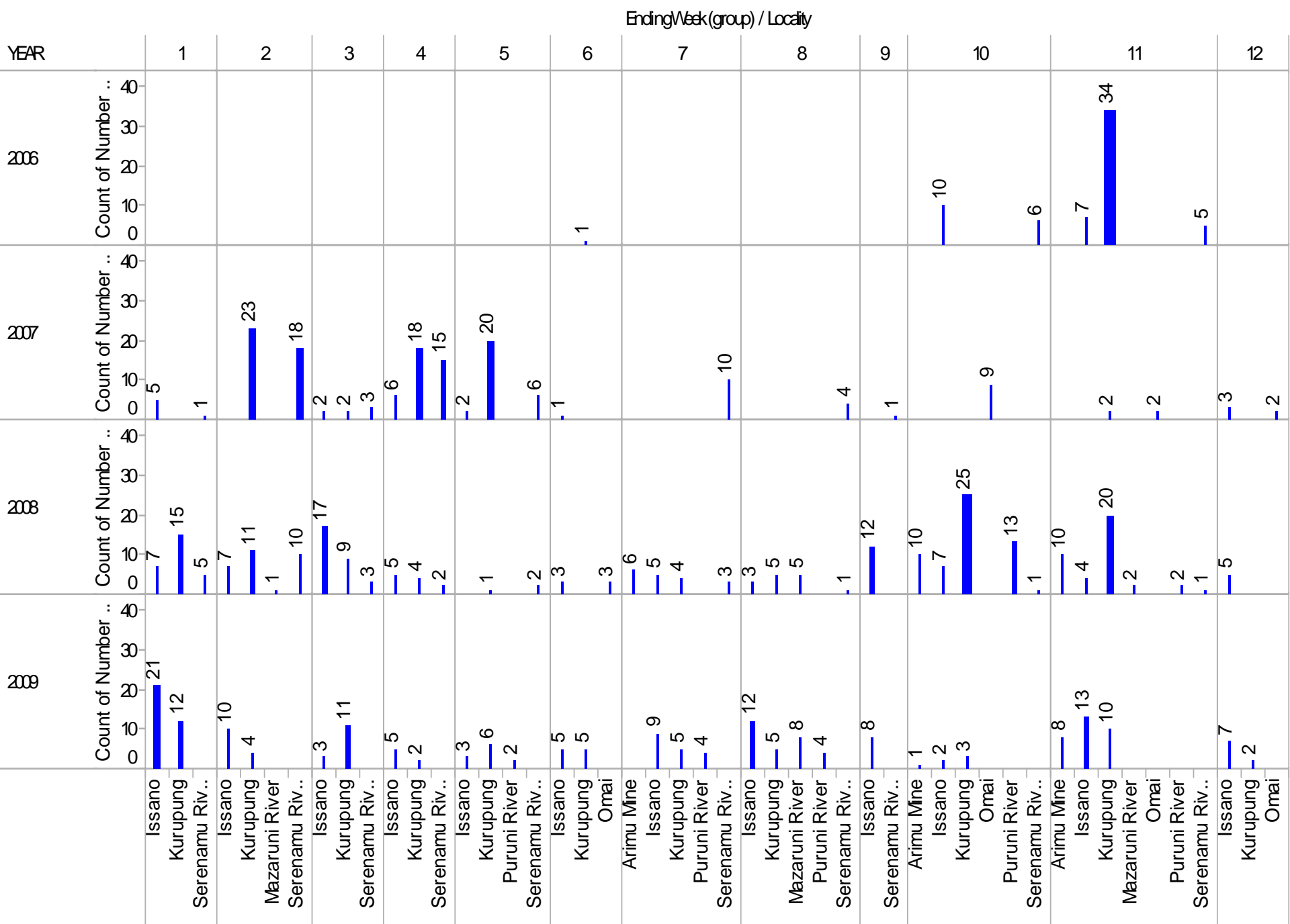
Region 1

NC by Month Fig

EndingWeek (group) / Locality

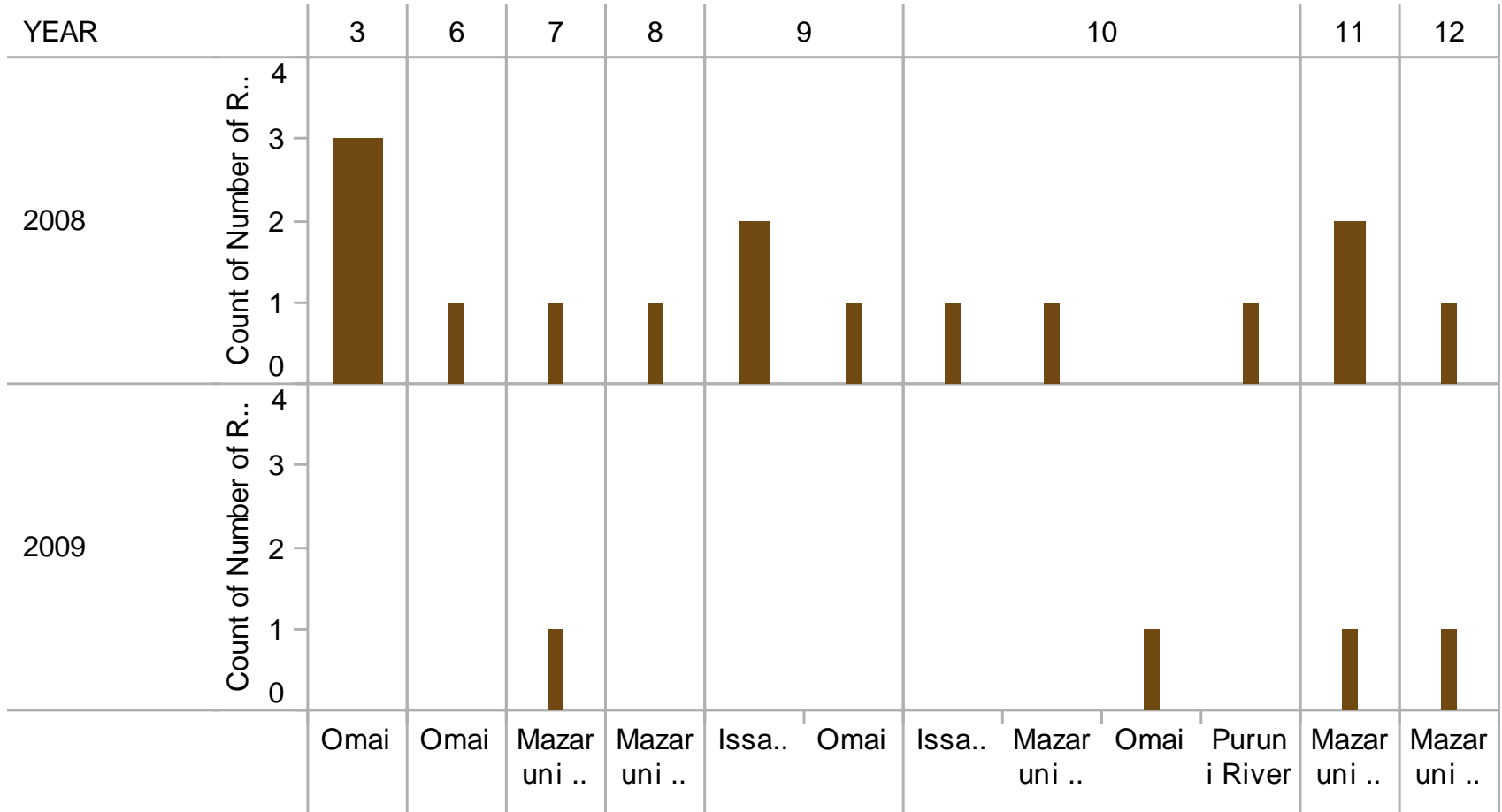


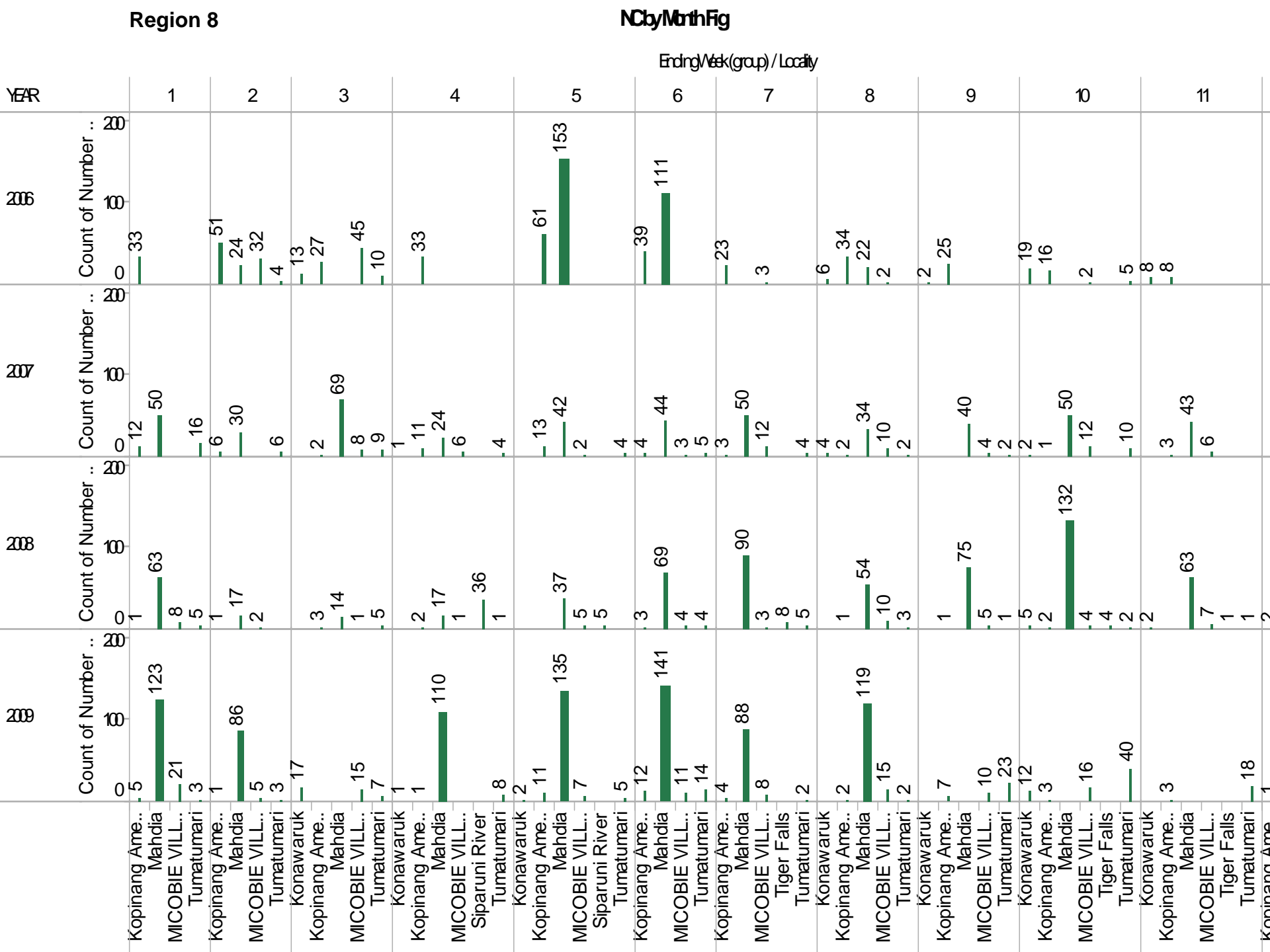
NCbyMonthFig



NC by Month Fig

EndingWeek (group) / WhereInfected

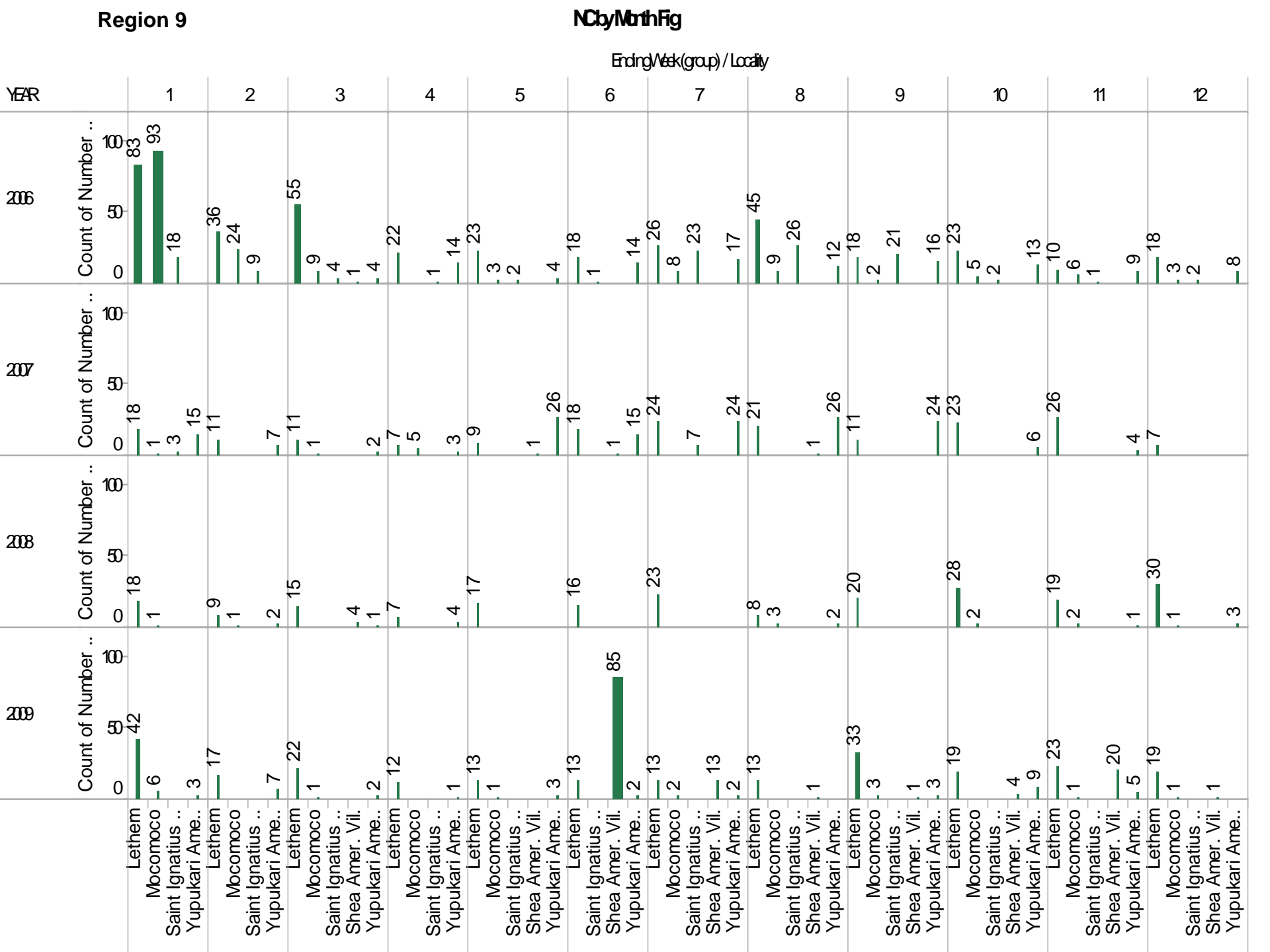




By Sex

Case	Region	Locality	Sex / YEAR						
			FEMALE		MALE				
			2008	2009	2008	2009			
NEW CASE	7	Bartica Village District	339	154	1,184	495			
		Cuyuni River		1		5			
		Issano	15	26	33	26			
		Kamarang		4		2			
		Mazaruni River	3		3	1			
		Omai			1				
		Puruni River	6		9				
	8	Mahdia	133	157	423	524			
		MICOBIE VILLAGE	18	21	37	32			
		Siparuni River	6		31				
		Tumatumari	4	22	19	63			
	1	Arakaka	69	129	157	234			
		Barama River	6		13				
		Baramita	26	99	29	104			
		Mabaruma	68	229	199	330			
		Pakera	58	86	87	147			
		Port Kaituma	116	168	453	525			
		White Creek			2	1			
	10	Kwakwani	3	5	18	40			
		Mabura Hill	28	10	84	69			
		Rockstone			1	6			
	2	Charity	116	139	867	887			
		Friendship	22	18	32	36			
		Hackney				1			
		KARAW AB	117	6	79	36			
		Suddie	43	61	460	532			
		Wakapau Amer. Vil.			3	5			
	9	Lethem	46	40	174	133			
		Shea Amer. Vil.	2	43	2	69			
		Shulinab (Macusi) Amer. Vil.	7	12	12	14			
		Yupukari Amer. Vil.	5	9	8	22			
Grand Total									
			1,256	1,439	4,420	4,339			

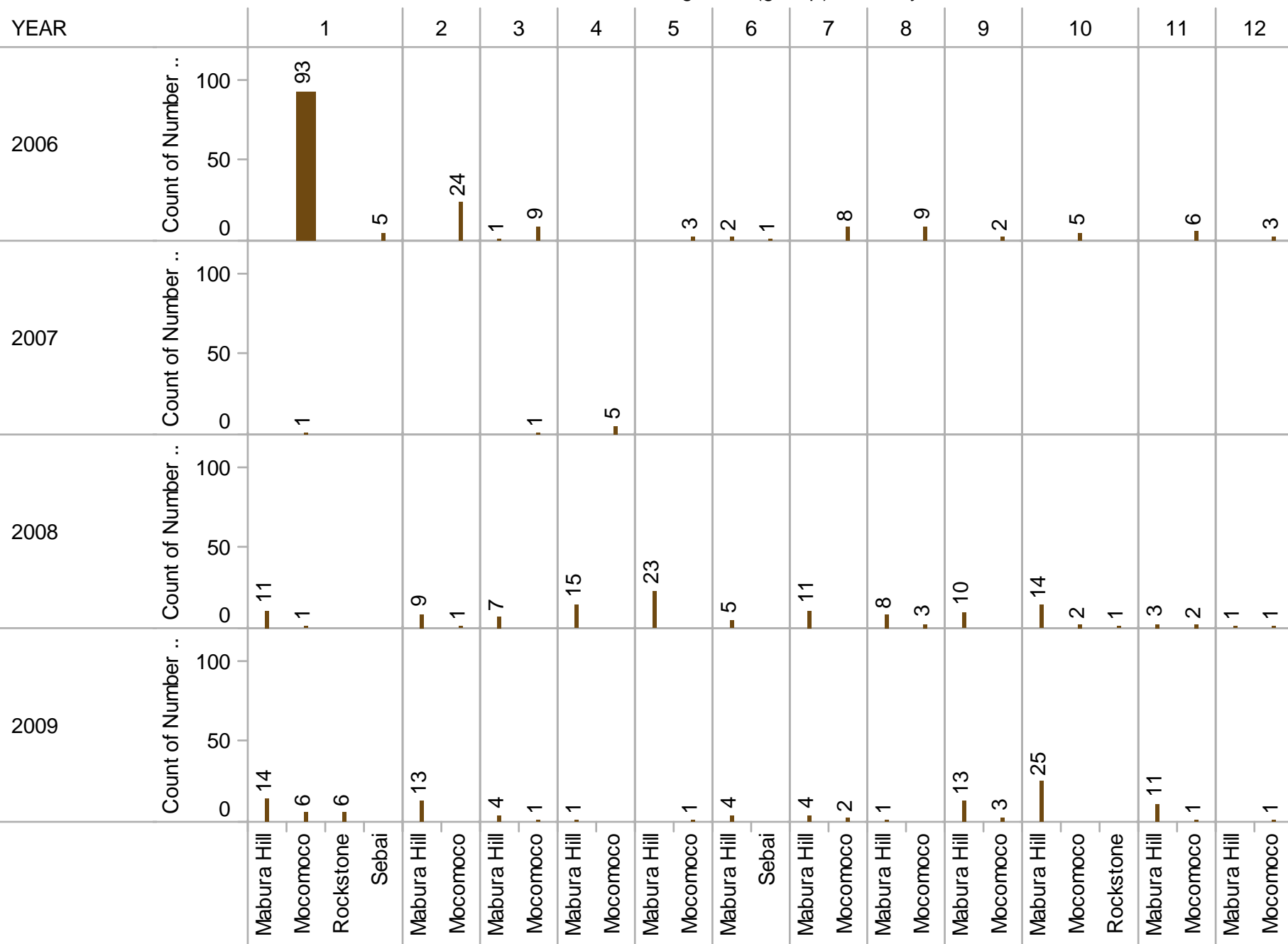




Region 10

NC by Month Fig

EndingWeek (group) / Locality

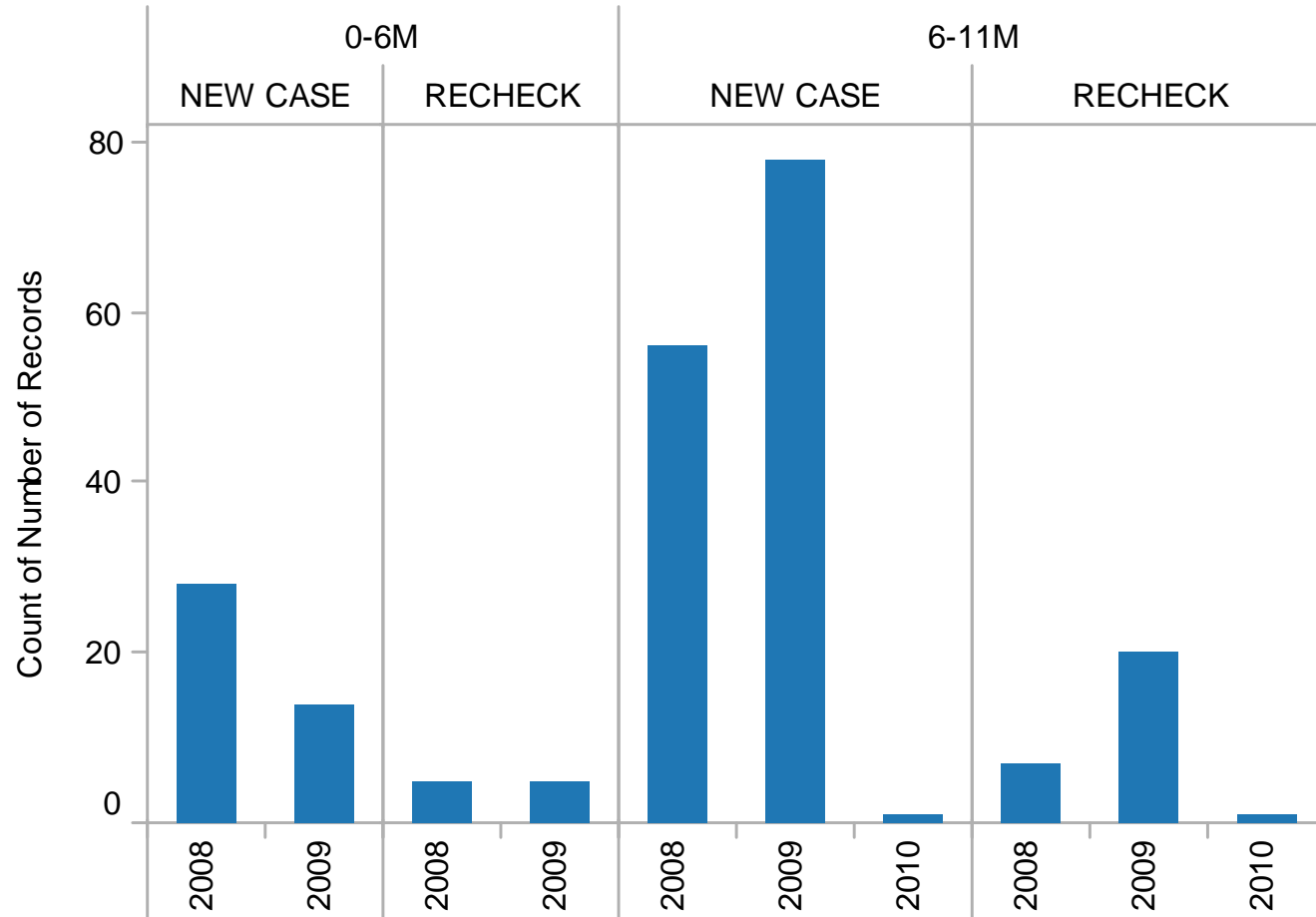


PREGNANCY By Region

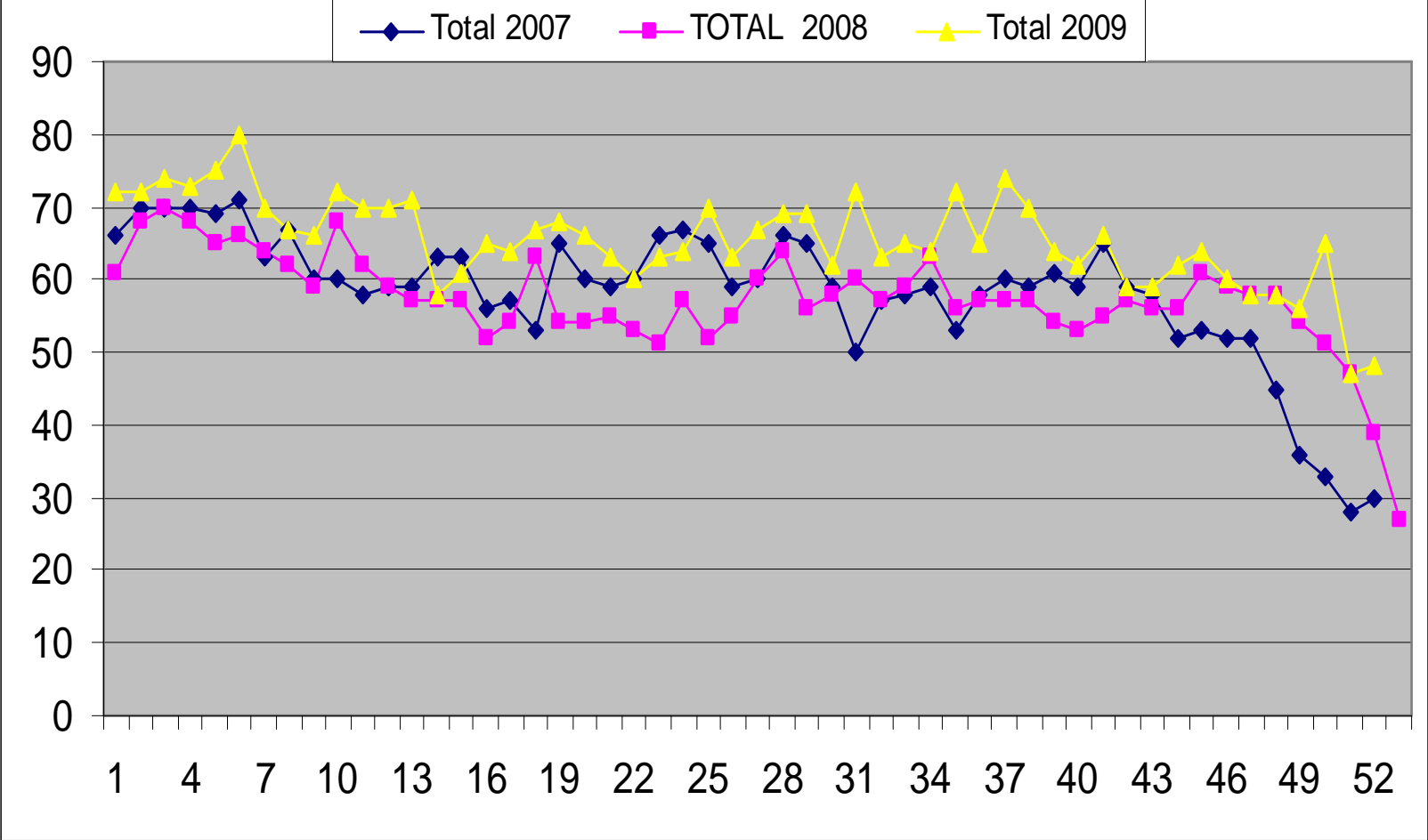
# / Year/Region	1	2	3	4	6	7	8	9	10	TOTAL
2007	19	0	0	36	0	4	3	3	10	75
2008	31	8	0	63	0	30	8	9	13	162
2009	47	12	0	107	7	40	37	14	3	267
Total accumulate by region	97	20	0	206	7	74	48	26	26	504

< 1

LessThan1YEAR (group) / Case / YEAR



TREND OF REPORTS RECEIVED FOR 2007-2008- 2009 BY ENDING WEEK BY LOCALITY



Summary

Region Indicators

Region	# of localities with transmission of Malaria			# of localities prioritized to the control			# of localities stratified for use LLIN with intervention		
	year	2007	2008	2009	2007	2008	2009	2007	2008
1	59	58	63	11	10	10	10	10	10
2	45	30	33	6	6	6	6	6	6
7	108	118	118	10	10	10	7	8	7
8	57	51	57	7	7	7	7	7	7
9	54	51	52	5	5	5	5	5	5
10	26	35	36	4	4	4	4	4	4
Total	349	343	359	43	42	42	39	40	39

% of localities prioritized to the control				%of localities stratified for use LLIN with intervention		
year	2007	2008	2009	2007	2008	2009
1	18.6	17.2	15.9	0.91	1.00	1.00
2	13.3	20.0	18.2	1.00	1.00	1.00
7	9.3	8.5	8.5	0.70	0.80	0.70
8	12.3	13.7	12.3	1.00	1.00	1.00
9	9.3	9.8	9.6	1.00	1.00	1.00
10	15.4	11.4	11.1	1.00	1.00	1.00
%	12.3	12.2	11.7	90.7	95.2	92.9

Hammacocknet



Preliminary results of KAP Malaria Survey 2009

2)Region #	Frequency HH	Percent
1	256	37.60%
10	145	21.30%
2	280	41.10%
Total	681	100.00 %

community/Village:	Frequency HH	Percent
Arakaka	72	10.60%
FriendShip	89	13.10%
Hackney	100	14.70%
Karawab	92	13.50%
Kwakwani	36	5.30%
Mabura Hill	52	7.60%
Mathews Ridge	18	2.60%
Other	1	0.30%
Port Kaituma	162	23.80%
Rock stone	57	8.40%
Total	680	100.00%

Preliminary results of KAP Malaria Survey 2009

Have mosquito nets	Frequency	Percent
Yes	630	95.50%
No	30	4.50%
Total	660	100.00%

how many mosquito nets have	Frequency	Percent
1	95	15.20%
2	190	30.30%
3	206	32.90%
4	96	15.30%
5	28	4.50%
6	10	1.60%
8	2	0.30%
Total	627	100.00%

Preliminary results of KAP Malaria Survey 2009

Main occupation	Frequency	Percent
Civil servant	32	5.20%
Farm worker	85	13.70%
Housewife	303	48.90%
Miner	42	6.80%
other	92	14.80%
Student	13	2.10%
Trained employed	20	3.20%
Unemployed	33	5.30%
Total	620	100.00%

Are all the mosquito nets being used?

Frequency

Percent

don' t know

2

0.30%

no

31

5.00%

yes

589

94.70%

Total

622

100.00%

Next Strategic Approach

To strengthen and monitor the entomological efficacy of LLIN

- **Bioassays, Colorimetric and spectrometric tests: monitor ITN insecticidal effect over time**
- **Entomological study pertaining to the habits of vector**
- **Integrate the entomological information to Malaria information System with the indicator proposed by AMI**
- **Case control study Cluster randomized trial**