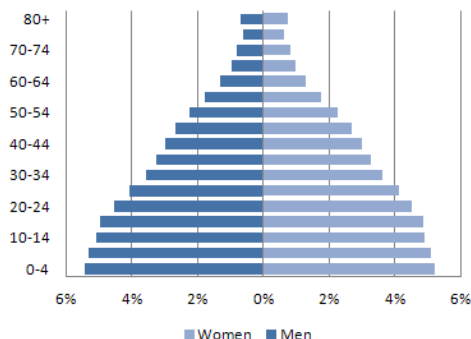


DEMOGRAPHIC AND SOCIOECONOMIC PROFILE

(1) POPULATION PYRAMID (2010)



(2) Total population (2010): 9,927,320

(3) Percentage of population aged 30-69 years (2010): 37.6

(4) Life expectancy at birth (years) (2013):
Total: 73.4 Male: 70.4 Female: 76.7

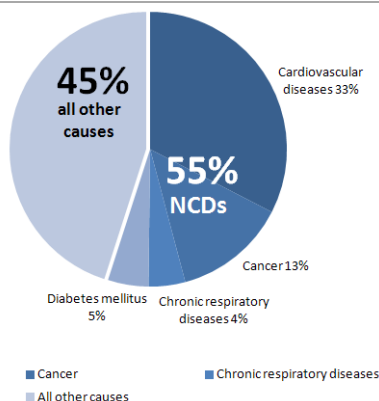
(5) Literate population (15+ years old) (%) (2011): 90.1

(6) Gross national income (2012):
Current value (US\$ per capita): 5,470
Purchasing power parity value (international dollars): 9,820

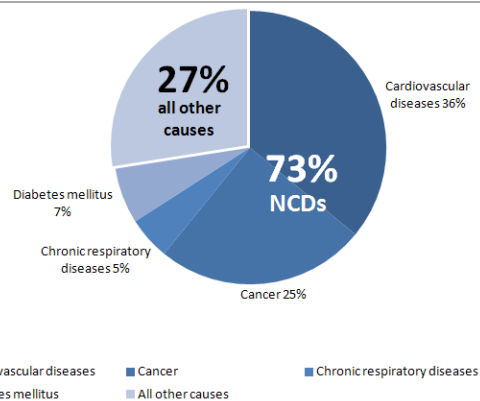
Sources: (1-2): United Nations Population Division. World Population Prospects: The 2010 Revision, New York, 2011; (3-6): PAHO/WHO. Health Situation in the Americas: Basic Indicators 2013. [Internet] Washington, D.C, United States of America, 2013. [Accessed on Feb 20, 2014]. Available from: <http://bit.ly/1jMhEzO>

ALL CAUSE PREMATURE DEATHS (2010)

MALE (30-69 yrs)



FEMALE (30-69 yrs)

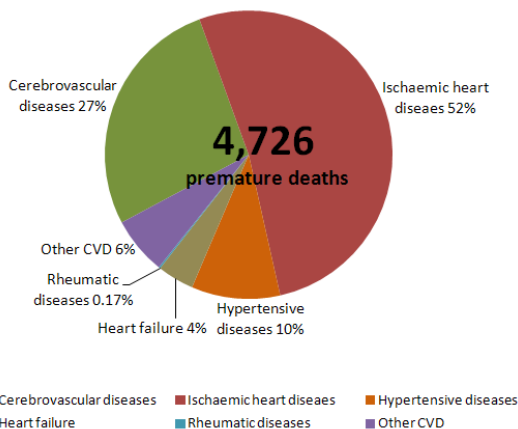


Total premature deaths: 14,514
4 NCDs premature deaths: 7,979

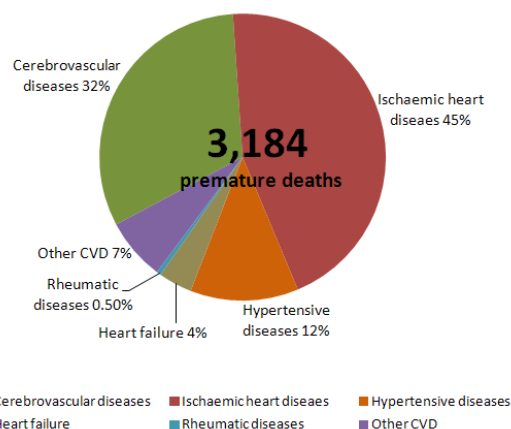
Total premature deaths: 8,853
4 NCDs premature deaths: 6,420

CARDIOVASCULAR DISEASES PREMATURE DEATHS (2010)

MALE (30-69 yrs)



FEMALE (30-69 yrs)

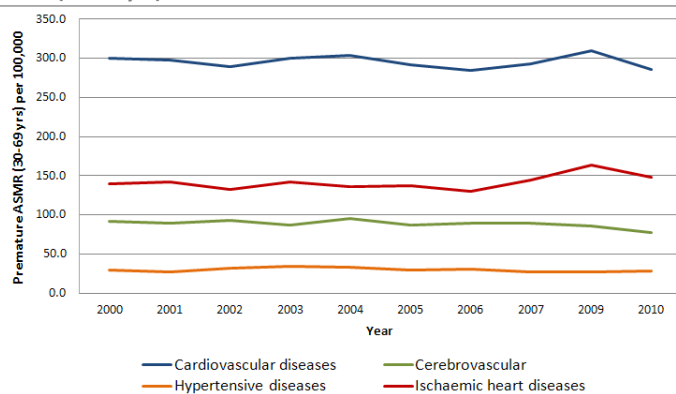


Notes: NCDs: Noncommunicable diseases; CVD: Cardiovascular diseases.

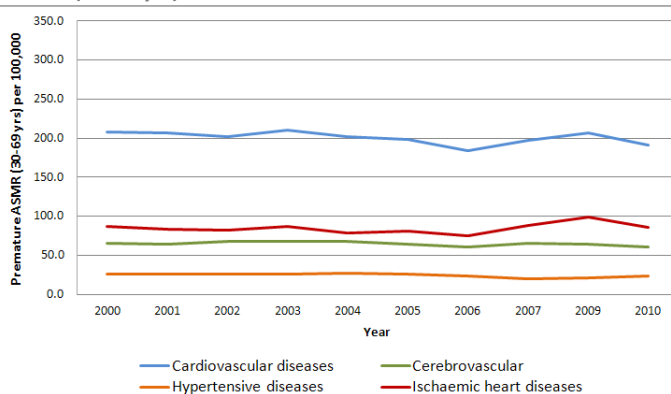
Source: PAHO/WHO Mortality information system 2014 (ICD-10: Cardiovascular diseases (I00-I99), cerebrovascular diseases (I60-I69), hypertensive diseases (I10-I15), ischaemic heart diseases (I20-I25), cancer (C00-99), diabetes (E10-E14) and chronic respiratory diseases (J30-98)).

CARDIOVASCULAR DISEASES AGE-STANDARDIZED PREMATURE MORTALITY RATES AND TRENDS (2000-2010[‡])

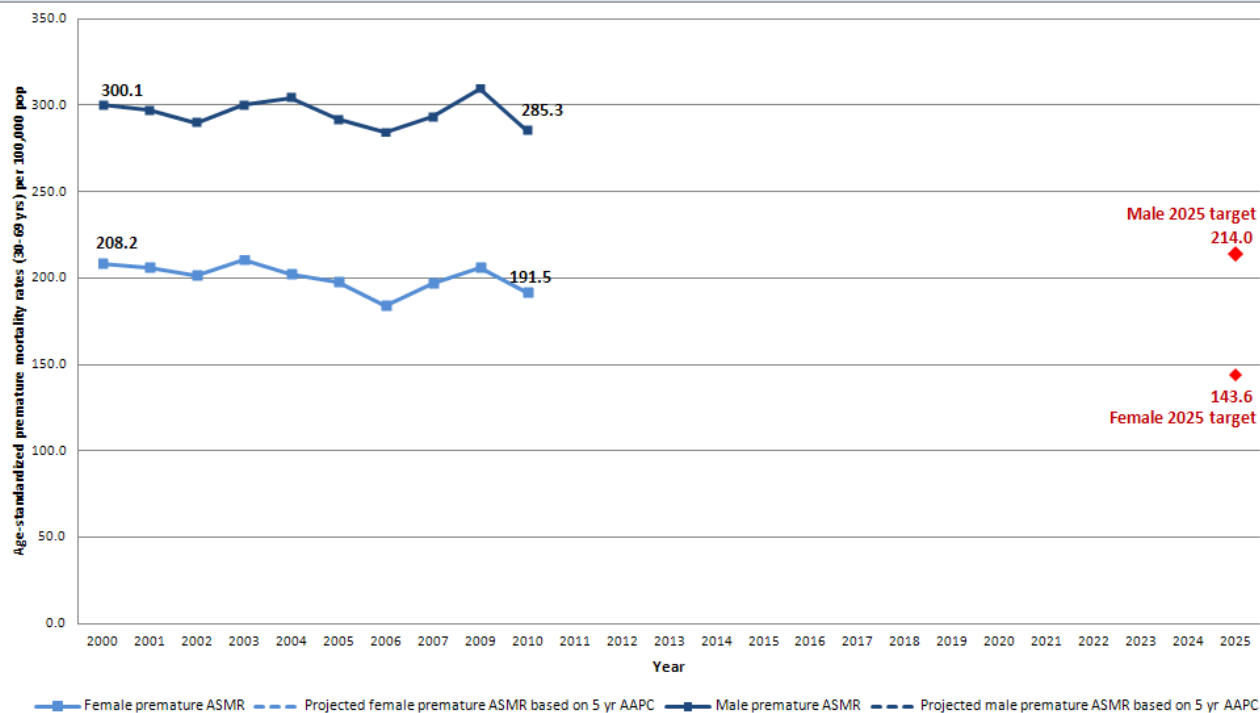
MALE (30-69 yrs)



FEMALE (30-69 yrs)



CARDIOVASCULAR DISEASES AGE-STANDARDIZED PREMATURE MORTALITY TRENDS (2000-2010[‡]), 2025 TARGETS AND 2025 PROJECTIONS



Sex	Total CVD premature deaths (2010)	Premature ASMR (2010)	AAPC		2025 target (premature ASMR for a 25% reduction)	2025 projection (premature ASMR based on 5 years AAPC)	Difference between target and projection
			10 years (2000-10)	5years (2005-10)			
Male	4,726	285.3	-0.1	-0.1	214.0	N.C.	N.C. ^a
Female	3,184	191.5	-0.7	-0.7	143.6	N.C.	N.C. ^a

Notes: CVD: Cardiovascular diseases; Premature ASMR: Age-standardized premature mortality rate (30-69 years of age) per 100,000 pop.; AAPC: Average Annual Percentage Change; ‡: Mortality data for Dominican Republic is available to PAHO for 2000-2007 and 2009-2010; *: The AAPC is significantly different from zero at $p=0.05$; N.C.: Not possible to calculate (no statistically significant trend was identified over the last 5 years with available mortality data); a: Based on the 2010 premature ASMR, an AAPC of -1.7 would be required between 2010-2025 to reach the 2025 target of a 25% reduction.

A complete description of the methodology used to produce this country profile is available from: <http://bit.ly/1pQtoU4>.

Source: PAHO/WHO Mortality information system 2014 (ICD-10: Cardiovascular diseases (I00-I99), cerebrovascular diseases (I60-I69), hypertensive diseases (I10-I15), ischaemic heart diseases (I20-I25)).