

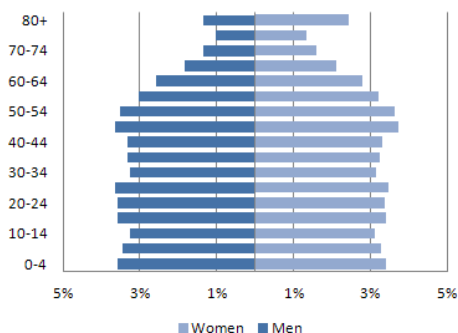


# UNITED STATES OF AMERICA: CARDIOVASCULAR DISEASES PROFILE



## DEMOGRAPHIC AND SOCIOECONOMIC PROFILE

### (1) POPULATION PYRAMID (2010)



(2) Total population (2010): 310,383,948

(3) Percentage of population aged 30-69 years (2010): 49.7

(4) Life expectancy at birth (years) (2013):  
Total: 78.9 Male: 76.5 Female: 81.3

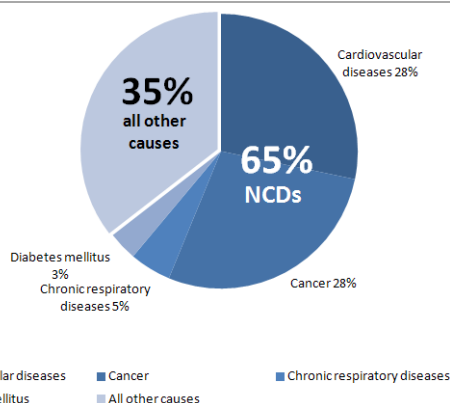
(5) Literate population (15+ years old) (%) (2011): ...

(6) Gross national income (2012):  
Current value (US\$ per capita): 50,120  
Purchasing power parity value (international dollars): 50,610

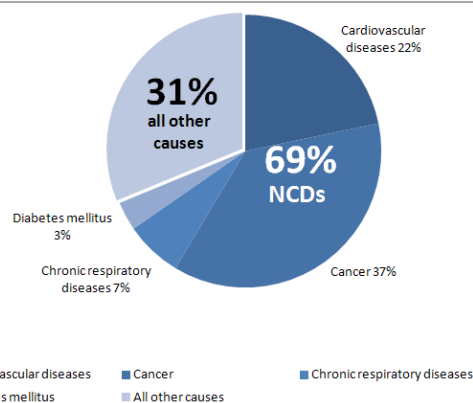
Sources: (1-2): United Nations Population Division. World Population Prospects: The 2010 Revision, New York, 2011; (3-6): PAHO/WHO. Health Situation in the Americas: Basic Indicators 2013. [Internet] Washington, D.C, United States of America, 2013. [Accessed on Feb 20, 2014]. Available from: <http://bit.ly/1jMhEzO>

## ALL CAUSE PREMATURE DEATHS (2010)

### MALE (30-69 yrs)



### FEMALE (30-69 yrs)

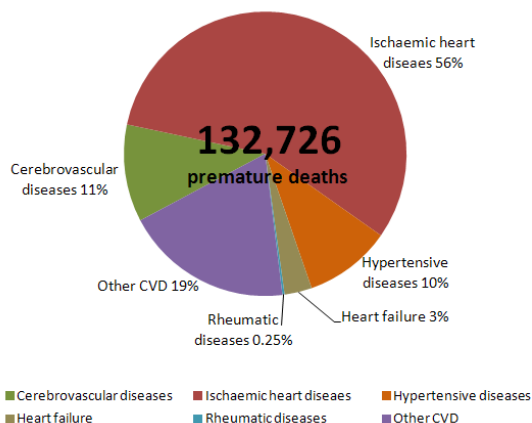


Total premature deaths: 469,403  
4 NCDs premature deaths: 302,844

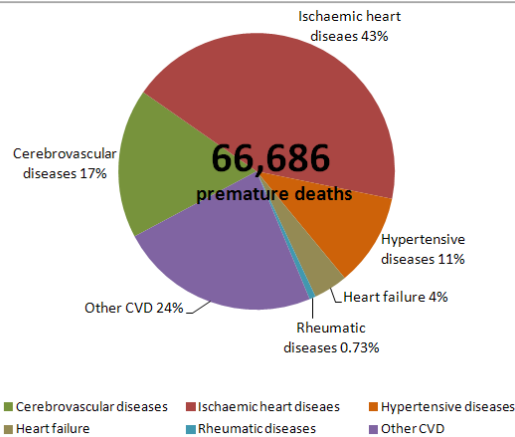
Total premature deaths: 307,109  
4 NCDs premature deaths: 211,218

## CARDIOVASCULAR DISEASES PREMATURE DEATHS (2010)

### MALE (30-69 yrs)



### FEMALE (30-69 yrs)

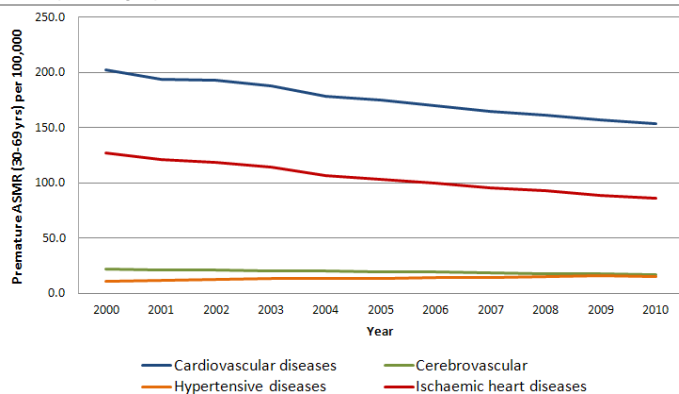


Notes: NCDs: Noncommunicable diseases; CVD: Cardiovascular diseases.

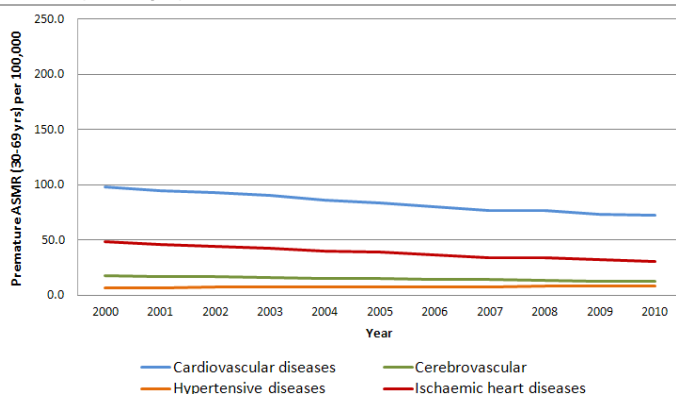
Source: PAHO/WHO Mortality information system 2014 (ICD-10: Cardiovascular diseases (I00-I99), cerebrovascular diseases (I60-I69), hypertensive diseases (I10-I15), ischaemic heart diseases (I20-I25), cancer (C00-99), diabetes (E10-14) and chronic respiratory diseases (J30-98)).

## CARDIOVASCULAR DISEASES AGE-STANDARDIZED PREMATURE MORTALITY RATES AND TRENDS (2000-2010)

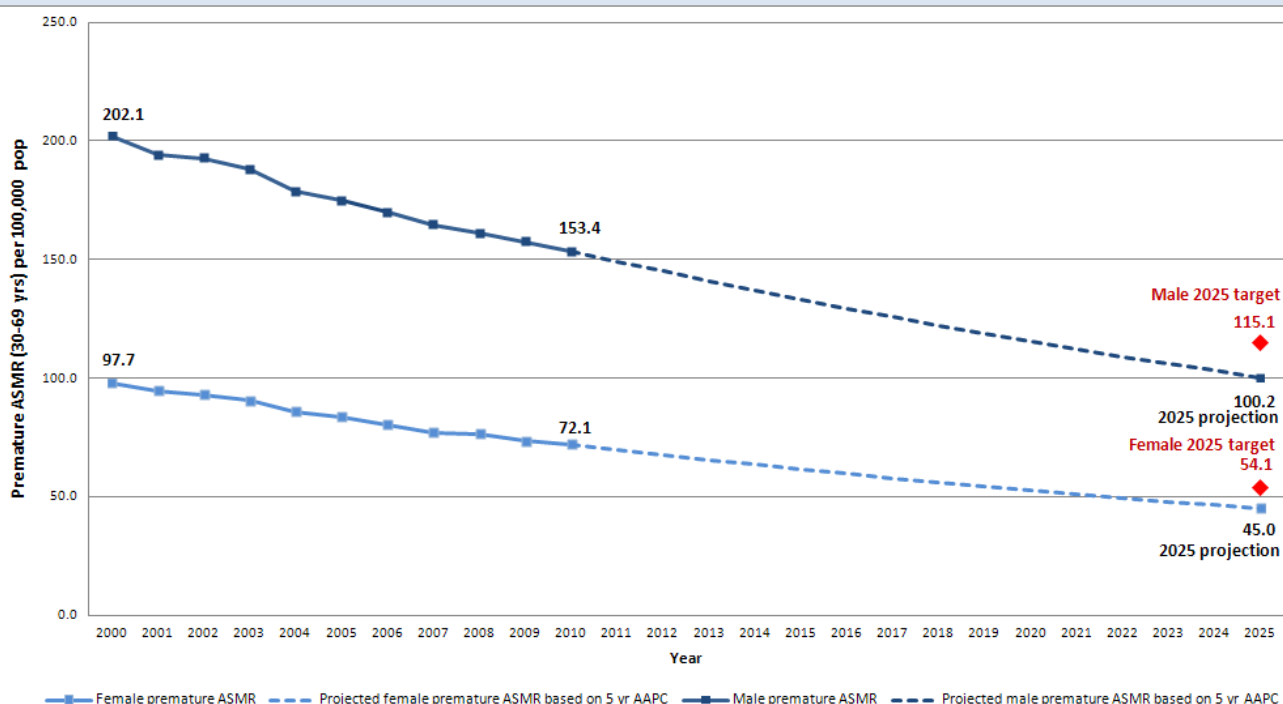
### MALE (30-69 yrs)



### FEMALE (30-69 yrs)



## CARDIOVASCULAR DISEASES AGE-STANDARDIZED PREMATURE MORTALITY TRENDS (2000-2010), 2025 TARGETS AND 2025 PROJECTIONS



Sex	Total CVD premature deaths (2010)	Premature ASMR (2010)	AAPC		2025 target (premature ASMR for a 25% reduction)	2025 projection (premature ASMR based on 5 years AAPC)	Difference between target and projection
			10 years (2001-10)	5 years (2006-10)			
Male	132,726	153.4	-2.8*	-2.8*	115.1	100.2	-14.9
Female	66,686	72.1	-3.1*	-3.1*	54.1	45.0	-9.1

Notes: CVD: Cardiovascular diseases; Premature ASMR: Age-standardized premature mortality rate (30-69 years of age) per 100,000 pop.; AAPC: Average Annual Percentage Change; \*: The AAPC is significantly different from zero at  $p=0.05$ .

A complete description of the methodology used to produce this country profile is available from: <http://bit.ly/1pQtoU4>.

Source: PAHO/WHO Mortality information system 2014 (ICD-10: Cardiovascular diseases (I00-I99), cerebrovascular diseases (I60-I69), hypertensive diseases (I10-I15), ischaemic heart diseases (I20-I25)).