

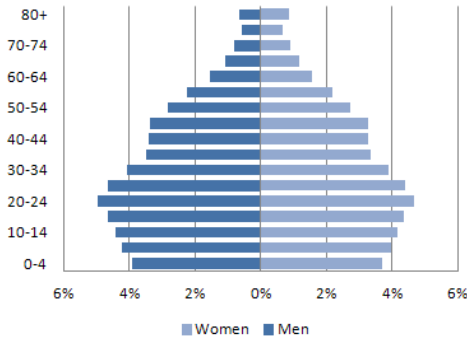


COSTA RICA: CARDIOVASCULAR DISEASES PROFILE



DEMOGRAPHIC AND SOCIOECONOMIC PROFILE

(1) POPULATION PYRAMID (2011)



(2) Total population (2011): 4,726,575

(3) Percentage of population aged 30-69 years (2011): 43.5

(4) Life expectancy at birth (years) (2013):
Total: 79.9 Male: 77.8 Female: 82.2

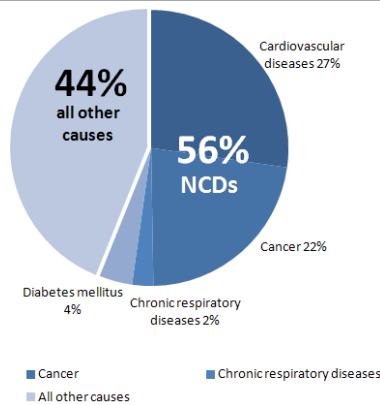
(5) Literate population (15+ years old) (%) (2011): 96.3

(6) Gross national income (2012):
Current value (US\$ per capita): 8,740
Purchasing power parity value (international dollars): 12,590

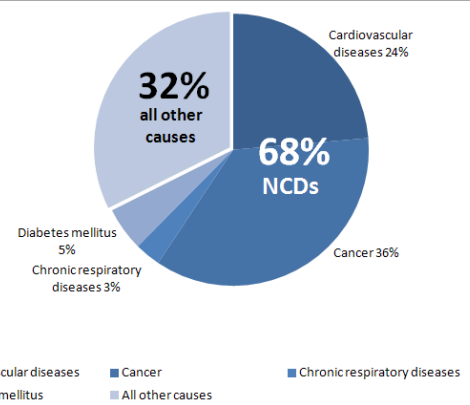
Sources: (1-2): United Nations Population Division. World Population Prospects: The 2010 Revision, New York, 2011; (3-6): PAHO/WHO. Health Situation in the Americas: Basic Indicators 2013. [Internet] Washington, D.C, United States of America, 2013. [Accessed on Feb 20, 2014]. Available from: <http://bit.ly/1jMhEzO>

ALL CAUSE PREMATURE DEATHS (2011)

MALE (30-69 yrs)



FEMALE (30-69 yrs)

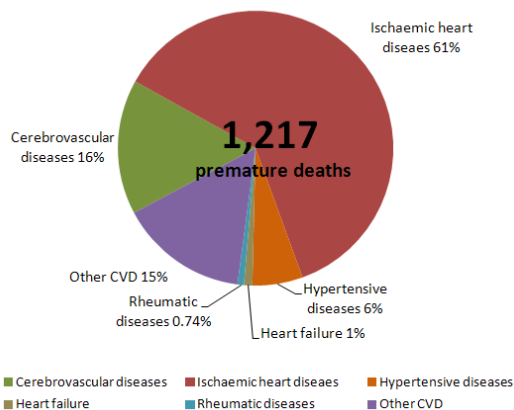


Total premature deaths: 4,465
4 NCDs premature deaths: 2,505

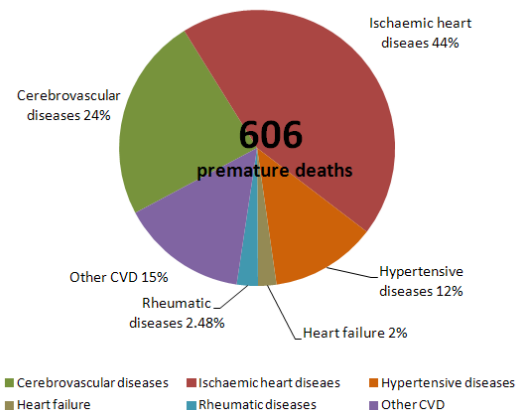
Total premature deaths: 2,565
4 NCDs premature deaths: 1,735

CARDIOVASCULAR DISEASES PREMATURE DEATHS (2011)

MALE (30-69 yrs)



FEMALE (30-69 yrs)

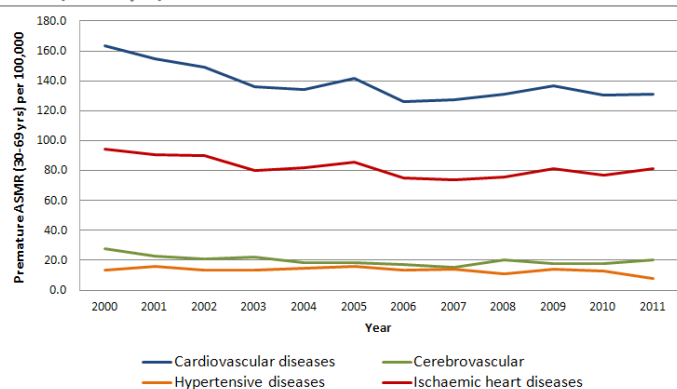


Notes: NCDs: Noncommunicable diseases; CVD: Cardiovascular diseases.

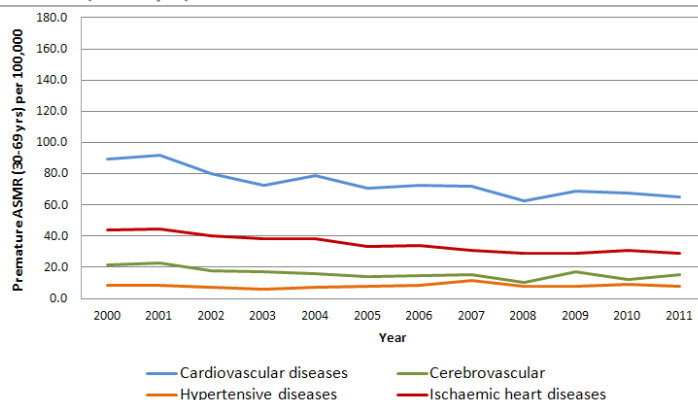
Source: PAHO/WHO Mortality information system 2014 (ICD-10: Cardiovascular diseases (I00-I99), cerebrovascular diseases (I60-I69), hypertensive diseases (I10-I15), ischaemic heart diseases (I20-I25), cancer (C00-99), diabetes (E10-14) and chronic respiratory diseases (J30-98)).

CARDIOVASCULAR DISEASES AGE-STANDARDIZED PREMATURE MORTALITY RATES AND TRENDS (2000-2011)

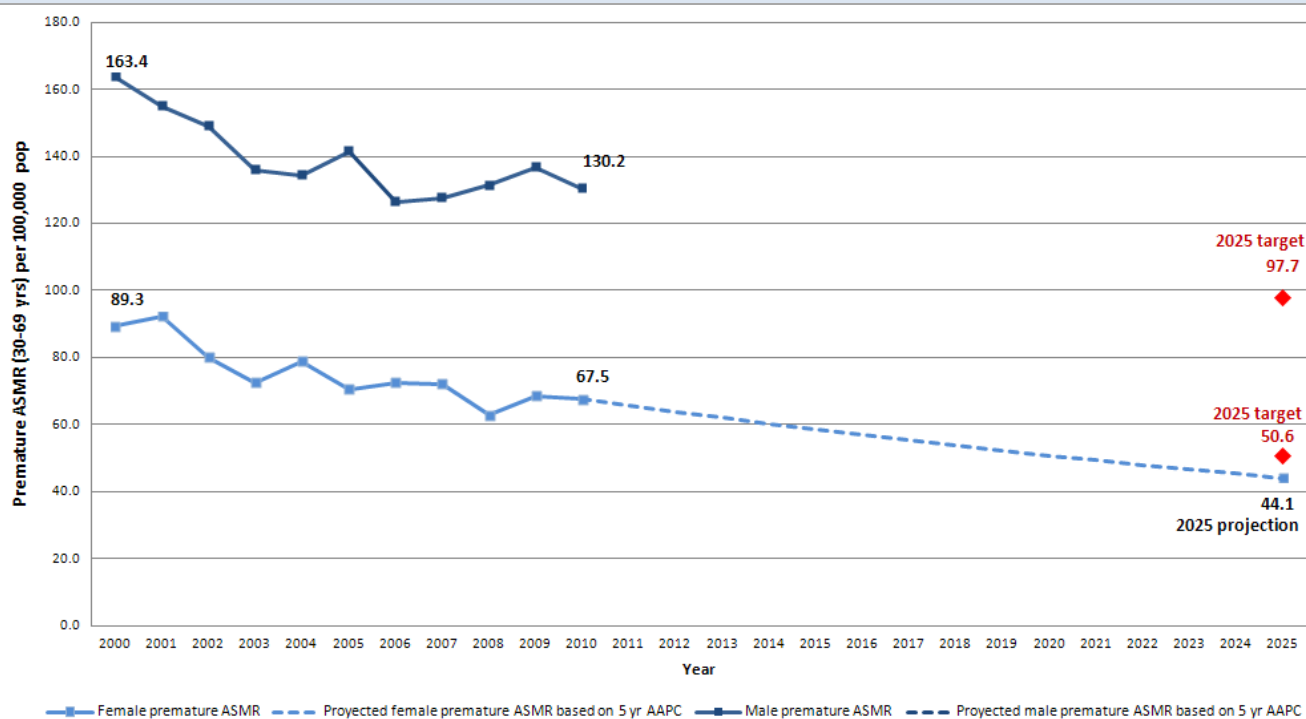
MALE (30-69 yrs)



FEMALE (30-69 yrs)



CARDIOVASCULAR DISEASES AGE-STANDARDIZED PREMATURE MORTALITY TRENDS (2000-2010), 2025 TARGETS AND 2025 PROJECTIONS



| Sex | Total CVD premature deaths (2010) | Premature ASMR (2010) | AAPC | | 2025 target (premature ASMR for a 25% reduction) | 2025 projection (premature ASMR based on 5 years AAPC) | Difference between target and projection |
|--------|-----------------------------------|-----------------------|--------------------|------------------|--|--|--|
| | | | 10 years (2002-11) | 5years (2007-11) | | | |
| Male | 1,152 | 130.2 | -1.2* | -0.6 | 97.7 | N.C. | N.C. ^a |
| Female | 601 | 67.5 | -2.8* | -2.8* | 50.6 | 44.1 | -6.5 |

Notes: CVD: Cardiovascular diseases; Premature ASMR: Age-standardized premature mortality rate (30-69 years of age) per 100,000 pop.; AAPC: Average Annual Percentage Change; *: The AAPC is significantly different from zero at $p=0.05$; N.C.: Not possible to calculate (no statistically significant trend was identified over the last 5 years with available mortality data); a: Based on the 2010 male premature ASMR, an AAPC of -1.7 would be required between 2010-2025 to reach the 2025 target of a 25% reduction.

A complete description of the methodology used to produce this country profile is available from: <http://bit.ly/1pQtoU4>.

Source: PAHO/WHO Mortality information system 2014 (ICD-10: Cardiovascular diseases (I00-I99), cerebrovascular diseases (I60-I69), hypertensive diseases (I10-I15), ischaemic heart diseases (I20-I25)).