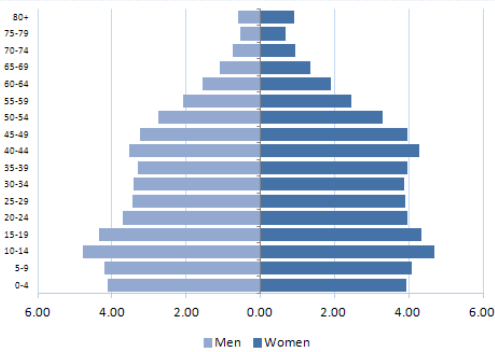


# ANTIGUA AND BARBUDA

## SOCIODEMOGRAPHIC INDICATORS<sup>1</sup>



- **Total population:** 87,900
- **Average annual deaths:** 500
- **Life expectancy at birth (years):**  
Total: 76 Male: 74 Female: 78
- **Adult literacy rate:** 99%
- **Gross national income US\$ per capita:** 12,130

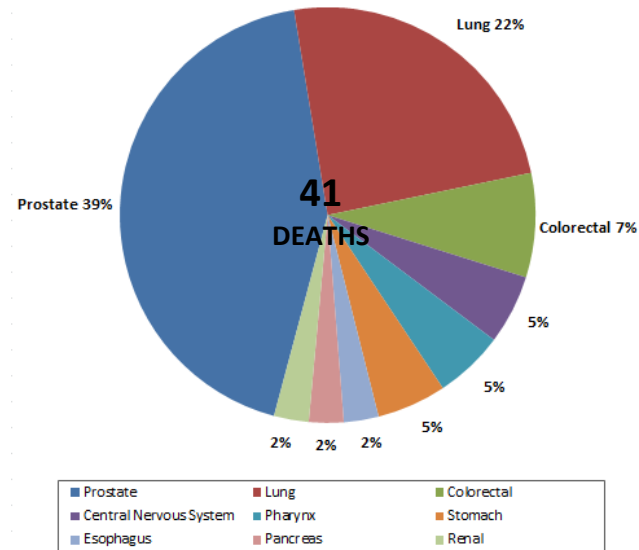
## RISK FACTORS

Prevalence of:	Total (%)	Male (%)	Female (%)
Current tobacco smokers among adults <sup>2,a</sup>	...	...	...
Current use of any tobacco product among youth <sup>2</sup>	20.1	24.3	15.9
Fruit and vegetable intake in adults <sup>1,b</sup>	...	...	...
Alcohol consumers, past 12 months <sup>3</sup>	...	...	...
Low physical activity in adults <sup>1,c</sup>	...	...	...
Obesity among adults (BMI ≥30) <sup>1</sup>	25.8	18.1	33.1
HPV prevalence (women with normal cytology) <sup>4</sup>	...	...	...

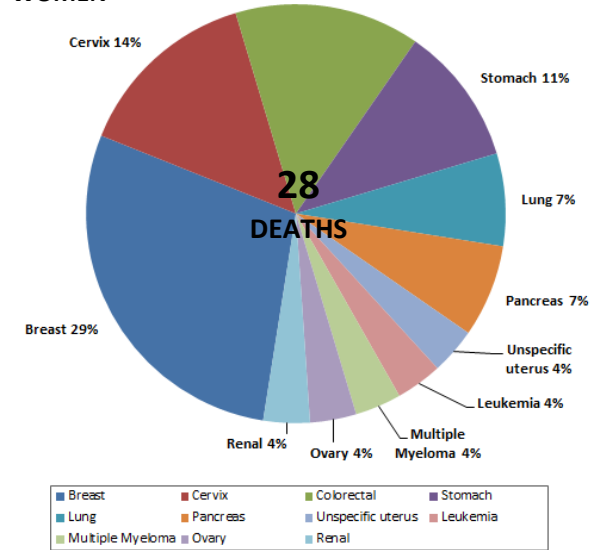
Notes: a: age-standardized prevalence of tobacco smoking in adults (15 years+); b: % who eat 5 or more servings of fruit and vegetables per day; c: % who are physically active for <600 met minutes; BMI: Body Mass Index; HPV: Human Papillomavirus.

## CANCER MORTALITY PROFILE (2009)<sup>5</sup>

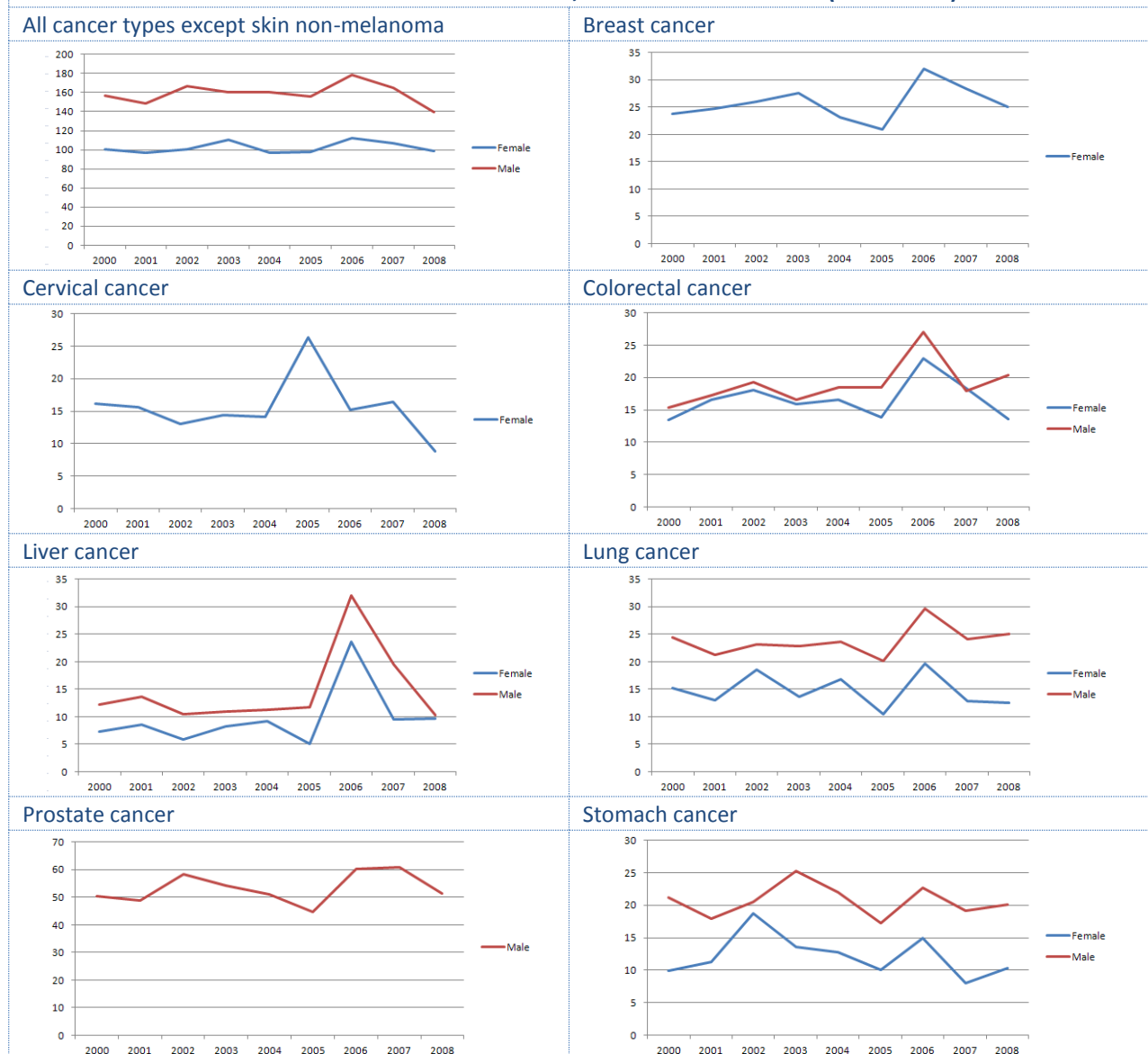
### MEN



### WOMEN



## AGE-STANDARDIZED CANCER MORTALITY TRENDS, CARIBBEAN ISLANDS<sup>‡</sup> (2000-2008)<sup>5</sup>



Average annual percent change (AAPC) of age-standardized mortality rates, by cancer type (2000-2008) <sup>5</sup> Caribbean Islands <sup>‡</sup>				
Cancer type	Sex	Number of deaths (2008)	ASMR (2008)	AAPC
All cancer types	Male	1,756	139.49	-0.07
	Female	1,452	98.93	0.57
Breast cancer		286	25.05	1.27
Cervical cancer		78	8.81	-2.26
Colorectal cancer	Male	160	20.33	3.40
	Female	137	13.64	1.19
Liver cancer	Male	51	10.23	4.59
	Female	39	9.69	6.32
Lung cancer	Male	178	25.11	1.44
	Female	90	12.51	-1.58
Prostate cancer		556	51.35	1.00
Stomach cancer	Male	107	20.05	-0.33
	Female	81	10.37	-2.63

Notes: ‡: For this analysis, Caribbean Islands include those countries with very small numbers of annual cancer deaths and which required grouping together to enable trend analysis: Anguilla, Antigua and Barbuda, Aruba, Bahamas, Barbados, Bermuda, Cayman Islands, Dominica, French Guyana, Grenada, Guadalupe, Martinique, Montserrat, Saint Kitts and Nevis, Saint Vincent and the Grenadines, Saint Lucia, Turks and Caicos Islands, Virgin Islands (UK) and Virgin Islands (USA); ASMR: Age-standardized mortality rate; AAPC: Average annual percent change; \*: The AAPC is significantly different from zero at p=0.05.

## CANCER PLANS AND CANCER REGISTRATION<sup>6</sup>

<b>National integrated NCD policy, strategy or action plan</b>	
Is there a national integrated NCD policy, strategy or action plan?	No
Is cancer included in the overall NCD plan?	N/A
First year of implementation	N/A
<b>Cancer policy, strategy or action plan</b>	
Is there a cancer policy, strategy or action plan?	No
First year of implementation	N/A
<b>Cancer registry</b>	
Is there a cancer registry?	No
Scope (national vs. subnational)?	N/A
Type of registry (population vs. hospital based)?	N/A
Last year with available data	N/A

## CANCER PRIMARY PREVENTION POLICIES

<b>Tobacco control<sup>2</sup></b>	
Smoke free environments?	Up to two types of public places completely smoke-free
Raised taxes on tobacco?	Taxes are 7% of the final price
Health warning labels about the dangers of tobacco?	No warnings or small warnings
Bans on tobacco advertising, promotion and sponsorship?	Complete absence of ban, or ban does not cover national television, radio and print media
<b>Overweight and obesity prevention and control<sup>6</sup></b>	
Is there a policy, strategy or action plan for reducing overweight/obesity? (First year of implementation)	No
<b>Harmful use of alcohol prevention and control<sup>6</sup></b>	
Is there a policy, strategy or action plan for reducing harmful use of alcohol? (First year of implementation)	No
<b>HPV vaccination in national immunization program?<sup>7</sup></b>	
Year of introduction/target age group/delivery strategy	N/A
Estimated 3-dose coverage (calendar year)	N/A
<b>HBV vaccination in national immunization program?<sup>8</sup></b>	
Year of introduction/target age group	1999/first contact, +6weeks, +6 m
Estimated 3-dose coverage (2012)	98%

## CANCER SCREENING

<b>Cervical cancer</b>	
<b>Guidelines</b>	
Are there cervical cancer screening guidelines available?	...
Guideline recommendations (tests/age groups/frequency)	...
<b>Availability and coverage of screening services</b>	
<b>Cervical cytology<sup>6</sup></b>	Generally available in the public and the private sectors
<b>Visual inspection with acetic acid<sup>6</sup></b>	Generally available in the public and the private sectors
<b>Screening coverage</b>	...

CANCER SCREENING	
<b>Breast cancer</b>	
<b>Guidelines</b>	
Are there breast cancer screening guidelines available?	...
Guideline recommendations (tests/age groups/frequency)	...
<b>Availability and coverage of screening services</b>	
<b>Clinical breast examination<sup>6</sup></b>	Generally available in the public and the private sectors
<b>Mammography<sup>6</sup></b>	Generally available in the public and the private sectors
<b>Screening coverage</b>	...
<b>Colorectal cancer</b>	
<b>Guidelines</b>	
Are there colorectal cancer screening guidelines available?	...
Guideline recommendations (tests/age groups/frequency)	...
<b>Availability and coverage of screening services</b>	
<b>Fecal occult blood test or fecal immunological test<sup>6</sup></b>	Generally available in the public and the private sectors
<b>Exam or colonoscopy<sup>6</sup></b>	Generally available in the public and the private sectors
<b>Screening coverage</b>	...

CANCER TREATMENT AND PALLIATIVE CARE			
<b>Radiotherapy<sup>9</sup></b>		<b>Oral morphine<sup>6</sup></b>	
Availability of services in the public health sector? <sup>6</sup>	Generally <b>not</b> available	Availability in the public health sector?	Generally <b>not</b> available
Total energy teletherapy units/million inhabitants	...	Covered by health insurance or publically funded?	No
Total radiotherapy centers	...	Appears in the national list of essential medicines?	Yes
Radiation oncologists	...	<b>Opioid consumption<sup>10</sup></b>	
Medical physicists	...	Total morphine equivalence, per capita	...
<b>Chemotherapy<sup>6</sup></b>		<b>Community/home care<sup>6</sup></b>	
Availability of services in the public health sector?	Generally available	Are community/home care services available in the public sector for people with advanced stages of NCDs?	Generally available

Notes: ...: Information not available; N/A: Not applicable; m: months.

Sources:

- (1) PAHO. Non communicable Diseases in the Americas: Basic Health Indicators 2011. Washington D.C, USA, 2011.
- (2) PAHO. Tobacco Control Report for the Region of the Americas, 2013. Washington D.C, USA, 2013.
- (3) WHO. Global Information System on Alcohol and Health, retrieved August 28, 2013, from <http://bit.ly/17zhuqZ>.
- (4) ICO. Information Center on HPV and Cancer, retrieved August 28, 2013, from <http://www.hpvcentre.net/>.
- (5) PAHO/WHO Mortality Database, 2012.
- (6) PAHO/WHO Survey on National Capacity for the Prevention and Control of Non-communicable Diseases, 2013.
- (7) Markowitz LE et al. Vaccine. 2012 Nov 20; 30 Suppl 5:F139-48.
- (8) PAHO/WHO Comprehensive Family Immunization Unit. Year of introduction-- Country Reports to PAHO/WHO; Schedules--PAHO/WHO Immunization Country Profiles, retrieved August 28, 2013, from <http://bit.ly/1dn4Td3>; Coverage--PAHO/WHO Immunization Reported Coverage in the Americas, by vaccine, retrieved August 28, 2013 from <http://bit.ly/1dn59ZK>.
- (9) WHO/IAEA Directory of Radiotherapy Centers (DIRAC) Database, retrieved August 28, 2013 from <http://www-naweb.iaea.org/nahu/dirac/>.
- (10) University of Wisconsin. WHO Collaborating Centre for Pain Policy and Palliative Care, Opioid Consumption Database 2010, retrieved August 28, 2013, from <http://www.painpolicy.wisc.edu/countryprofiles/amro>.