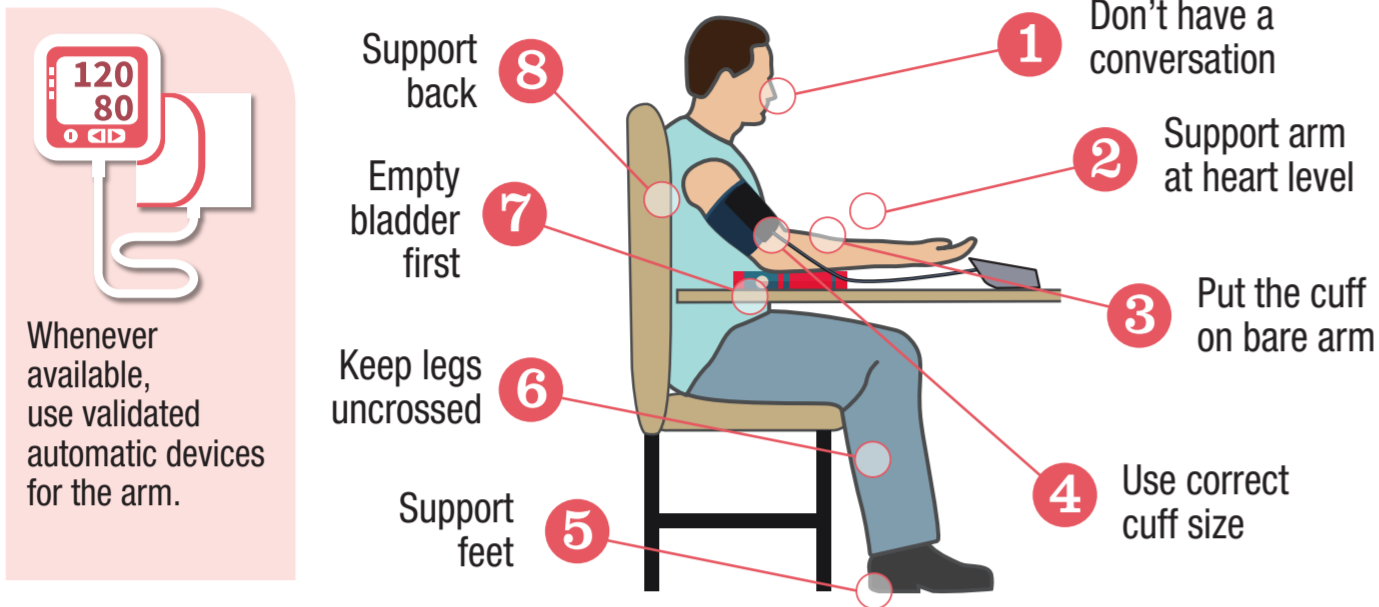


Protocol A - Acceptable

Hypertension Clinical Pathway

A ACCURATE BLOOD PRESSURE MEASUREMENT

MEASURE BLOOD PRESSURE IN ALL ADULTS AND AT ALL VISITS



B CARDIOVASCULAR RISK

KNOW YOUR RISK OF CARDIOVASCULAR DISEASE AND HOW TO MODIFY IT

CARDIOVASCULAR RISK CALCULATOR

Use the **HEARTS** App to assess your cardiovascular risk



Scan code to access the cardiovascular risk calculator



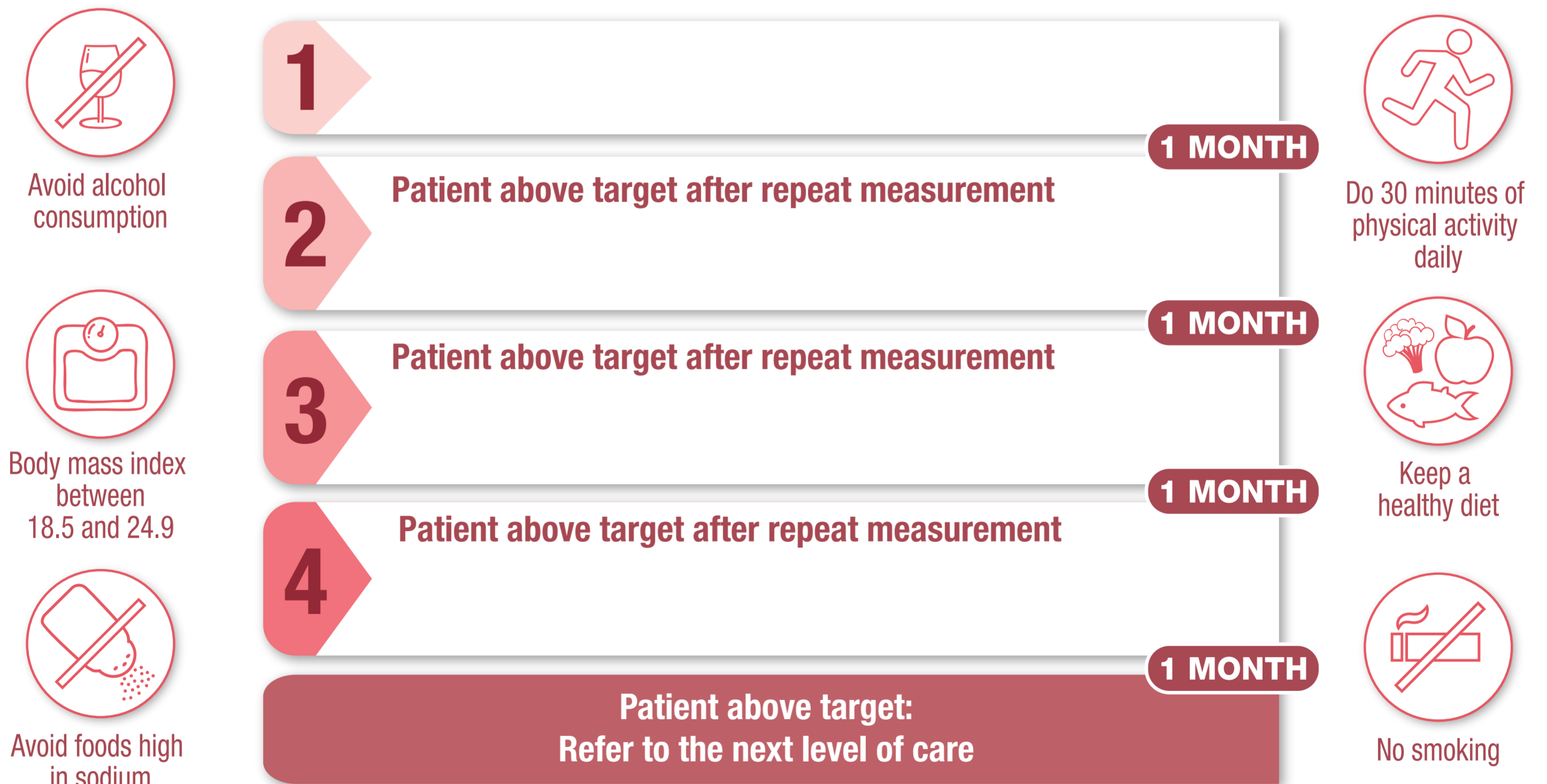
This App does not replace clinical judgment.

C TREATMENT PROTOCOL

START TREATMENT IMMEDIATELY AFTER CONFIRMING HYPERTENSION

Blood Pressure $\geq 140/90$ mmHg in all **HYPERTENSIVES**.
 Systolic Blood Pressure ≥ 130 mmHg in **HIGH-RISK HYPERTENSIVES**
 (Established cardiovascular disease, Diabetes, Chronic Kidney Disease, Risk score \geq %)

Cardiovascular risk	All Hypertensives	HIGH-RISK Hypertensives	
		WITH established cardiovascular disease	WITHOUT established cardiovascular disease
Blood Pressure TARGET <140/90 mmHg	✓		
Systolic Blood Pressure TARGET <130 mmHg		✓	✓
ASPIRIN mg/daily		✓	
High-dose statins: mg/daily		✓	
Moderate-dose statins: mg/daily			✓



Patients under control	Minimum 6-MONTH follow-up	Minimum 3-MONTH follow-up	Supply medicines for 3 MONTHS	Vaccination		
				Influenza	Pneumococcus	COVID
All Hypertensives	✓		✓			✓
HIGH-RISK Hypertensives		✓	✓	✓	✓	✓