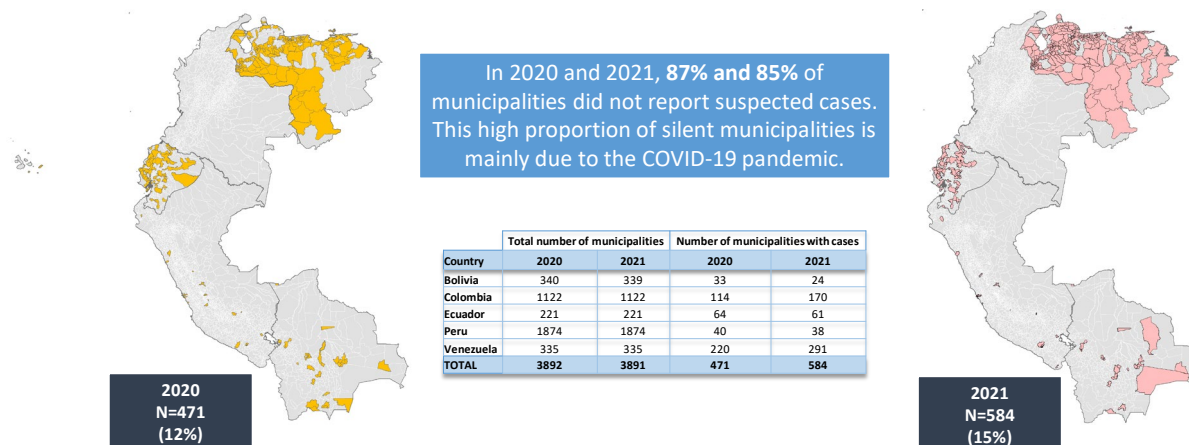


Municipalities* reporting suspected cases of measles and rubella Andean Region countries, 2020-2021**



* Some municipalities did not match the geocode used to develop this map.
**Data as of 12 August 2022.

Source: Integrated Surveillance Information System (ISIS)

Table.1
Classification of Suspect Measles, Rubella, and Congenital Rubella Syndrome (CRS) Cases for Week 1-32, 2022

Subregion and Country	Susp. Cases 2022	Measles Confirmed 2022				Year/Week Last Conf. Measles case	Rubella Confirmed 2022			Year/Week Last Conf. Rubella Case	Diagnosis of Discarded Cases 2022		Congenital Rubella Syndrome			Year/Week Last Conf. CRS Case	
		Clin.	Lab.	EPI link	Total		Clin.	Lab.	Total		Dengue	Others	Susp.	Conf.	CRI*		
AND	BOL	86	0	0	...	0	2020-16	0	0	0	2006-03	1	85	0	0	0	...
	COL	630	0	0	...	0	2020-09	0	0	0	2012-31	0	509	458	0	0	2005-34
	ECU	70	0	0	...	0	2018-33	0	0	0	2004-49	0	69	0	0	0	2011-14
	PER	80	0	0	...	0	2019-18	0	0	0	2009-04	0	73	0	0	0	2007-16
	VEN	331	0	0	...	0	2019-33	0	0	0	2007-51	5	326	0	0	0	...
BRA	BRA	2301	1	43	...	44	2022-25	0	0	0	2014-40	0	1951	52	0	...	2009-34
CAP	CRI	7	0	0	...	0	2019-13	0	0	0	2001-39	0	6	5	
	GTM	102	0	0	...	0	2018-03	0	0	0	2006-31	0	99	0	2005-00
	HND	76	0	0	...	0	1998-16	0	0	0	2004-11	0	74	13	0	0	2001-00
	NIC	64	0	0	...	0	1994-14	0	0	0	2004-19	0	60	25	0	0	2005-00
	PAN	8	0	0	...	0	2011-20	0	0	0	2002-48	0	8	0	0	0	...
	SLV	434	0	0	...	0	2001-19	0	0	0	2006-30	0	434	154	0	0	2001-00
CAR	CAR	12	0	0	...	0	2019-48	0	0	0	2008-18	0	10	0	0	0	1999-00
LAC	CUB	1000	2019-24	2004-06	0	1000	0	1989-10
	DOM	50	0	0	...	0	2011-18	0	0	0	2007-45	2	48	0	0	0	...
	HTI	118	0	0	...	0	2001-39	0	0	0	2006-21	0	92	40	0	0	...
MEX	MEX	1566	0	0	...	0	2020-23	0	0	0	2018-14	0	1422	0	0	0	...
NOA	CAN	3	...	3	2022-19	0	0	0	2019-50	0	0	0	2018-39
	USA	6	...	6	2022-24	0	0	0	2019-03	0	0	0	2017-00
SOC	ARG	229	0	2	...	2	2022-26	0	0	0	2019-47	0	226	0	0	0	2009-27
	CHL	132	0	0	...	0	2020-03	0	0	0	2019-14	0	129	39	0	0	...
	PRY	310	0	0	...	0	1998-44	0	0	0	2005-21	0	301	4	0	0	2003-06
	URY	2020-07	2001-37
TOTAL		7606	1	54	...	55	--	0	0	0	--	8	6922	790	0	0	--

*Congenital Rubella Infection.

...No updated report received



Measles, Rubella, and Congenital Rubella Syndrome Surveillance in the Americas

Vol. 28, No. 31-32

Table No.2
Infection Source of Measles and Rubella Confirmed Cases
for the Period of Weeks 1-32, 2022

Subregion and Country		Measles				Rubella		
		I	IR	En.	U	I	IR	U
AND	BOL							
	COL							
	ECU							
	PER							
	VEN							
BRA	BRA			44				
	CAP							
	CRI							
	GTM							
	HND							
	NIC							
	PAN							
	SLV							
	CAR							
	LAC							
MEX	MEX							
	NOA	3						
NOA	CAN	6						
	USA							
SOC	ARG	1			1			
	CHL							
	PRY							
	URY							
TOTAL		10	0	44	1	0	0	0

I: Imported; IR: Import-related; En: Endemic case; U: Unknown.
received

Table No.3
Measles/Rubella Suspect Cases Under Investigation
for the Period of Weeks 1-32, 2022

Country	Pending Cases 2021	Cumulative 2022	Week of Onset						% Pend. cases
			1-27	28	29	30	31	32	
BOL	0	0	0	0	0	0	0	...	0
COL	133	121	73	4	10	14	20	0	19
ECU	53	1	1	1
PER	0	7	3	0	1	0	0	3	9
VEN	2	0	0	0	0	0	0	...	0
BRA	22	306	235	33	28	10	0	0	13
CRI	3	1	1	0	0	0	0	0	14
GTM	0	3	2	0	0	1	0	0	3
HND	0	2	2	0	0	0	0	0	3
NIC	0	4	2	0	2	0	0	0	6
PAN	0	0	0	0	0	0
SLV	0	0	0	0	0	0	0	0	0
CAR	1	2	0	1	0	1	0	0	17
CUB	0	0	0	0	0	0	0	0	0
DOM	0	0	0	0	0	0	0	0	0
HTI	20	26	17	2	0	4	2	1	22
MEX	58	144	60	13	19	27	16	9	9
CAN
USA
ARG	0	1	0	0	1	0	0	0	0
CHL	0	3	1	0	0	1	1	0	2
PRY	0	9	4	1	1	1	2	0	3
URY	0
TOTAL	292	630	401	54	62	59	41	13	8

... No updated report received

Table 4
Indicators of Integrated Measles/Rubella Surveillance for Period of Weeks 1-32, 2022

Subregion and Country		Sites Reporting Weekly		% Cases with Adequate Investigation	% Cases with Adequate Sample	% Blood Samples Received in Lab. ≤5 days	% Lab. Results ≤4 days	Rate of Suspected Cases Last 52 weeks (2021/33-2022/-32)	
		Total Units	% This Week					Measles/Rubella (100,000 pop.) ^a	CRS (10,000 lb) ^a
AND	BOL	4156	...	95	94	91	93	1.2	0.0
	COL	5108	98	71	65	90	92	1.9	3.2
	ECU	2184	0	90	63	33	60	1.0	0.0
	PER	7781	0	91	81	44	27	0.3	0.0
	VEN	13092	0	100	94	7	4	2.6	0.0
BRA	BRA	0	0	0	0	92	62	1.5	0.3
	CAP	82	0	100	86	100	100	0.2	12.0
	CRI	1541	0	100	95	72	90	0.7	0.0
	GTM	469	92	88	99	96	97	1.0	1.5
	HND	185	0	100	97	92	95	1.5	5.9
	NIC	324	0	63	100	75	100	0.4	0.0
	PAN	1305	0	90	100	98	97	8.8	24.3
	SLV	758	0	75	92	0	82	0.2	0.0
	CAR	168	0	100	100	100	100	12.7	0.0
	LAC	247	0	30	94	90	96	0.6	0.0
MEX	HTI	659	98	91	97	25	58	1.4	2.6
	MEX	20155	95	92	99	94	95	1.6	0.0
NOA	CAN
	USA
SOC	ARG	784	0	0	78	70	64	0.6	0.0
	CHL	799	76	48	92	95	97	0.8	6.1
	PRY	1398	98	79	96	84	99	7.8	0.3
	URY	155	0	0	0	0	0	0.0	0.0
Total and Average*		61350	44	89	93	87	79	1.7	1.0

*Weighted

... No updated report received

(a) Source (population data): United Nations, Department of Economic and Social Affairs, Population Division (2019). World Population Prospects 2019, Online Edition. International Programs Center, Population Division, U.S. Census Bureau IDB Release Date: September 2019.