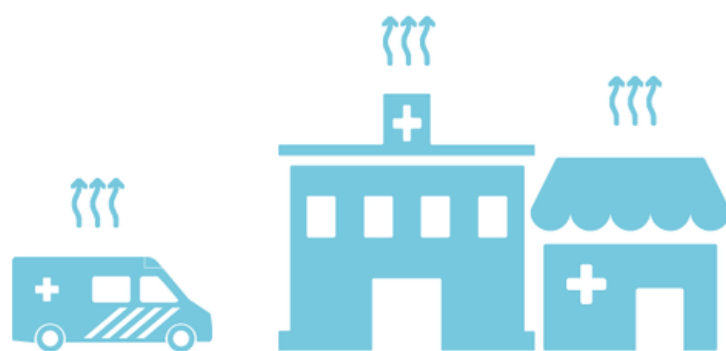


HEALTH INFRASTRUCTURE AND SERVICES

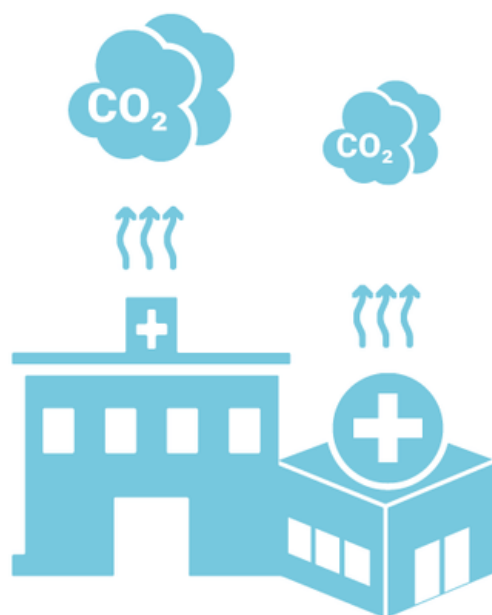
THE HEALTH SECTOR IS RESPONSIBLE FOR

3-10% OF
OF NATIONAL
GREENHOUSE GAS
EMISSIONS
IN THE AMERICAS⁽¹⁾



HOSPITALS

EMIT 17% OF
HEALTH SECTOR
EMISSIONS



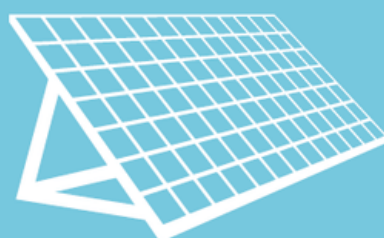
71% OF REMAINING
EMISSIONS
COME FROM
TRANSPORTATION
AND PRODUCTION



OF 35 COUNTRIES IN THE AMERICAS

8 COUNTRIES

HAVE ASSESSED HEALTH FACILITIES FOR ENVIRONMENTAL SUSTAINABILITY^(a)



7 COUNTRIES

HAVE A NATIONAL TARGET FOR HEALTH SECTOR GREENHOUSE GAS EMISSION REDUCTIONS

17 COUNTRIES

HAVE TAKEN MEASURES TO IMPROVE CLIMATE RESILIENCE OF HEALTH INFRASTRUCTURE^(b) SUCH AS:



- UPDATED BUILDING CODES
- RESILIENT WATER SERVICES
- RESILIENT COMMUNICATION SERVICES

PAHO

