

COVID-19

PAHO JAMAICA CO EOC – COVID-19 SITUATION REPORT #475
11 NOVEMBER 2021 (as at 6:00 p.m.)
JAMAICA, BERMUDA AND THE CAYMAN ISLANDS

EPIDEMIOLOGICAL SUMMARY

| Country | Confirmed Cases (New within 24hrs) | Active Cases (% of Total Cases) | Hospitalized (% Active Cases) | Deaths (New within 24hrs) | Case Fatality Rate (%) | Total Tests (Cum. Positivity Rate) | Transmission |
|-------------------------------|------------------------------------|---------------------------------|-------------------------------|---------------------------|------------------------|------------------------------------|------------------------|
| Jamaica ⁱ | 89,926 (108) | 27,217 (30.3%) | 217 (0.8%) | 2,302 (4) | 2.6% | 653,046 (13.8%) | Community Transmission |
| Bermuda ⁱⁱ | 5,688 (3) | 56 (1.0%) | 6 (10.7%) | 106 (0) | 1.9% | 612,105 (0.9%) | Community Transmission |
| Cayman ⁱⁱⁱ Islands | 3,427 (73) | 2,185 (63.8%) | 14 (0.6%) | 2 (0) | 0.1% | 177,985 (1.9%) | Community Transmission |

JAMAICA:

Table 1. Summary as at end of Epidemiological Week 44

| Confirmed Cases | New Cases | % Change in New Cases in last 7 days | Deaths | New Deaths | % Change in New Deaths in last 7 days | Weekly Positivity Rate | % Change in Weekly Positivity Rate |
|-----------------|-----------|--------------------------------------|--------|------------|---------------------------------------|------------------------|------------------------------------|
| 89,681 | 667 | -11.7% | 2,281 | 39 | -31.6% | 12.01% | -3.4% |

TRENDS IN CASES & DEATHS: As of 10 November 2021, Jamaica had **89,926 confirmed cases** of Coronavirus Disease 2019 (COVID-19) with **108 new cases** confirmed in the past 24 hours. There are currently 21,217 cases (30.3% of confirmed cases) in isolation across the island. New cases and deaths have decreased by 11.7% and 31.6% during EW 44 respectively. There are **2,302 COVID-19 related deaths** as of 10 November 2021. A total of 653,046 samples were tested at the laboratory with a daily positivity rate of 13.7% and a cumulative positivity rate of 13.8%.

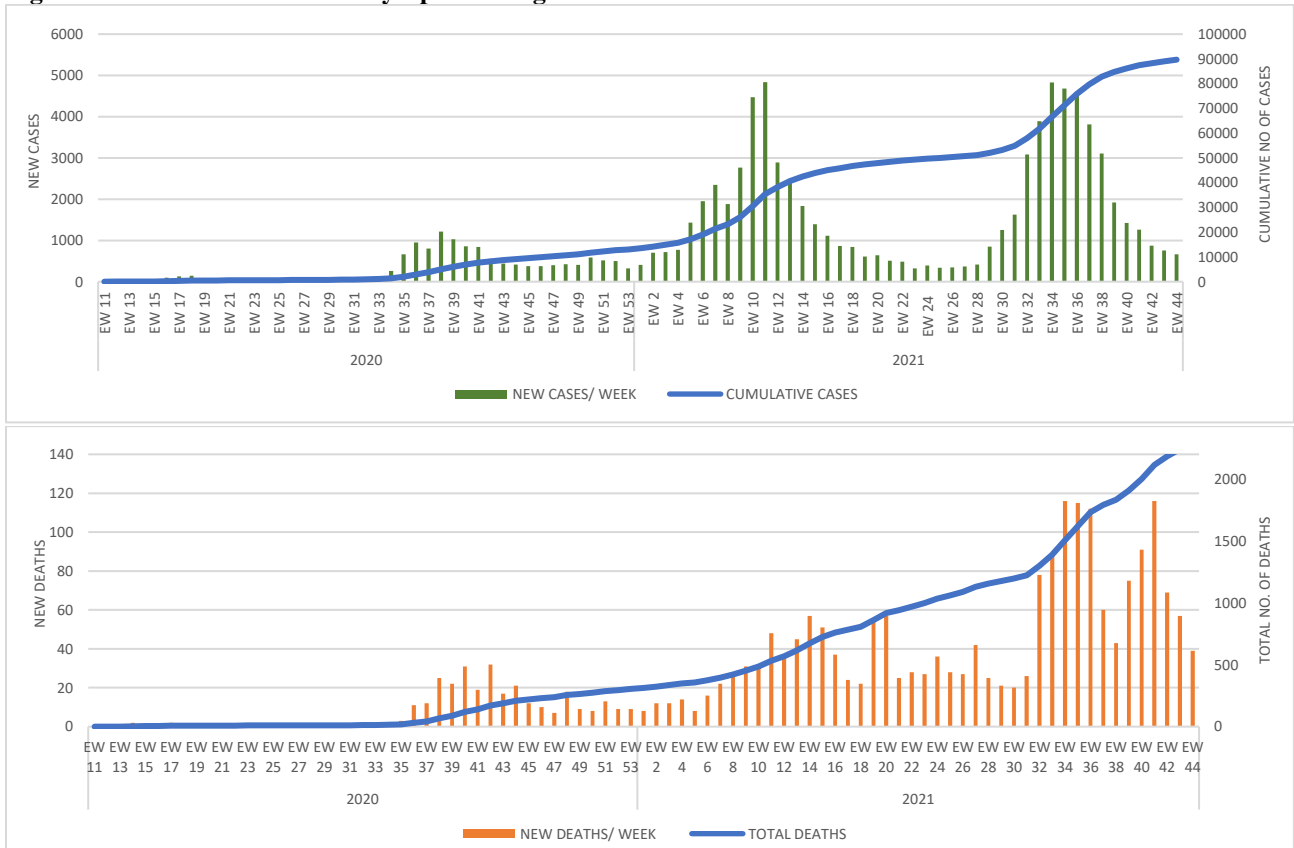
SEX & AGE DISTRIBUTION OF CASES & DEATHS: As of 10 November 2021, the highest burden of total confirmed cases remains within the 20-29 years and 30-39 years age groups, accounting for 18.7% and 17.9% of cases respectively, with the mean age at 41.3±20.7yrs. Females were primarily affected compared to males, with a male to female ratio (M:F) of 1:1.3; while the males accounted for more deaths, with a M:F ratio of 1:0.9.

ⁱ Cases and deaths as at 10 Nov 2021.

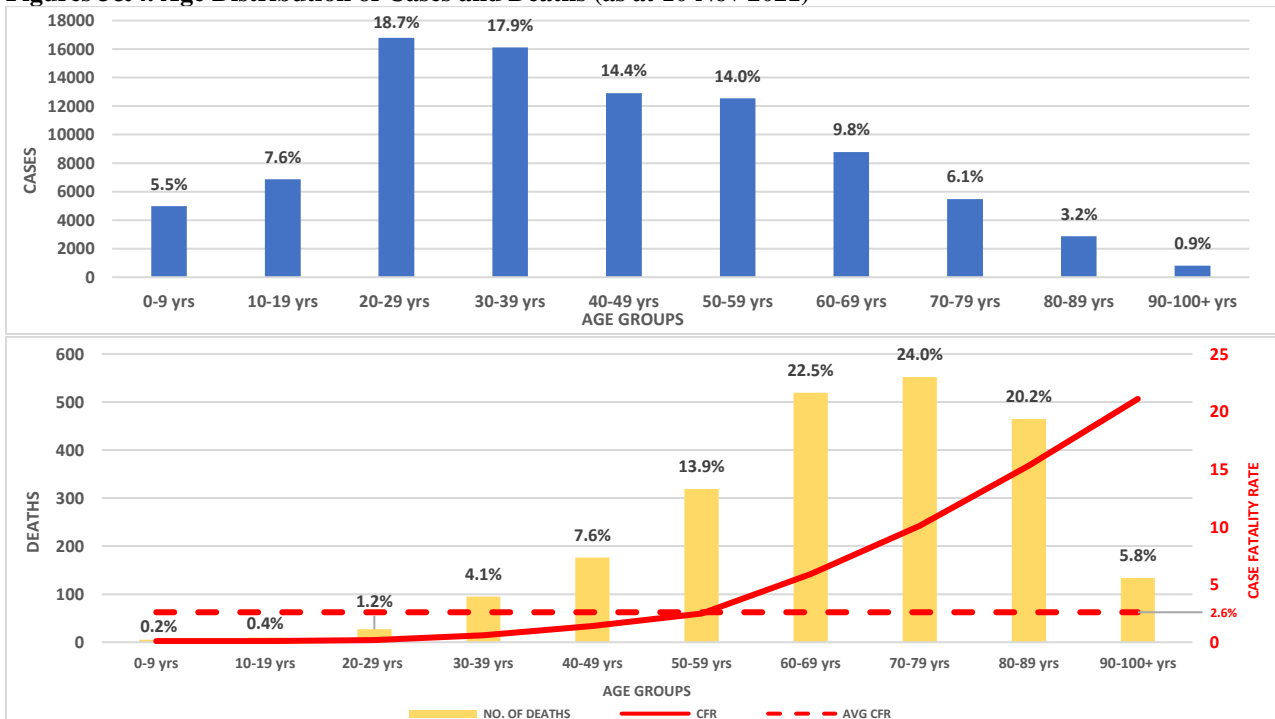
ⁱⁱ Cases and deaths as at 6 Nov 2021, reported 8 Nov 2021.

ⁱⁱⁱ Cases and deaths as at 9 Nov 2021.

Figures 1&2. Cases and Deaths by Epidemiological Week.

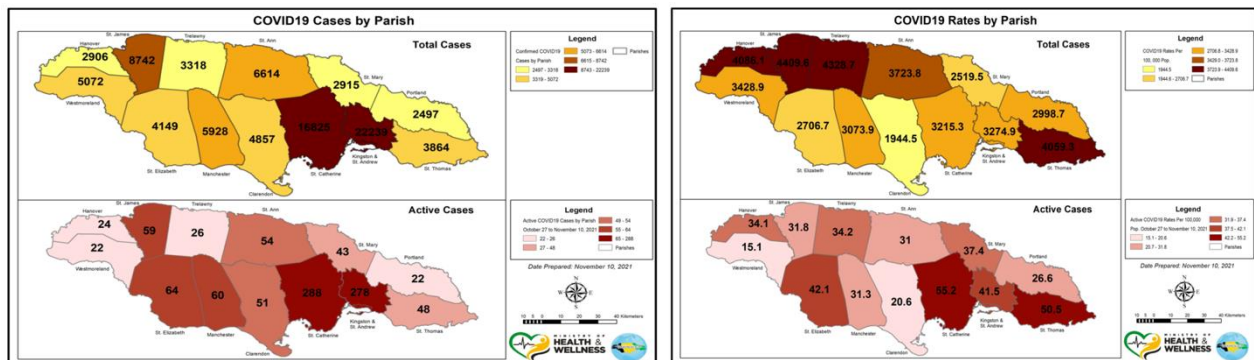


Figures 3&4. Age Distribution of Cases and Deaths (as at 10 Nov 2021)



GEOGRAPHICAL DISTRIBUTION: Data for 10 November 2021 highlighted that Kingston & St. Andrew (24.7%, n=22,239) and St. Catherine (18.7%, n=16,825) had the highest cumulative number of cases. The highest proportions of active cases for this week, however, were found in the parishes of St. James and St. Catherine (15.0% and 13.6% respectively). The total rates of active infections for this reporting period were highest in the parishes of St. Catherine (55.2 cases per 100,000 population) and St. Thomas (50.5 cases per 100,000 population).

Figures 5 & 6. COVID-19 Parish Distribution and Rates (cases per 100,000 population) of total and active cases (10 Nov 2021)



HOSPITALIZATIONS: As of 10 November 2021, hospitalizations decreased by approximately 10.7% since the last reporting period (5 Nov 2021). There was a total of 217 hospitalizations (0.8% of active cases), all of whom are unvaccinated. Of the hospitalized cases, 16.1% (n=35) were moderately ill, 14.7% (n=32) severely ill, and 5.5% (n=12) were critically ill. The average hospital occupancy rate as of 10 November has improved to 45%.

GOVERNMENT RESPONSE

The Disaster Risk Management (Enforcement Measures) (No. 10) (Amendment) Order, 2021 is in effect since 25 September 2021.

<https://moj.gov.jm/sites/default/files/DRM2021No10A.pdf>

As of 11 October 2021, the Disaster Risk Management (Enforcement Measures) (No.10) (Amendment) (No.2) Order, 2021 is also in effect.

<https://moj.gov.jm/sites/default/files/DRM2021No10A2.pdf>

New measures introduced from 29 October 2021 – 10 December 2021, include the removal of Sundays as a no movement day. The curfew is now from 8:00 p.m. to 5:00 a.m. daily. Protocols include a gathering limit of 10 persons, worship services of 50 persons and handing over events of 50 persons. All banned countries have been removed from the prohibited list.

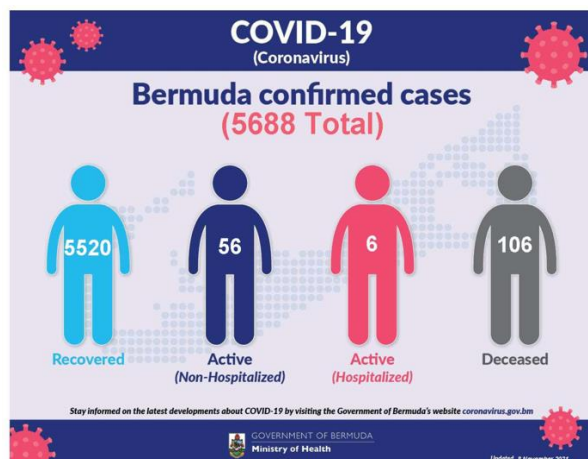
BERMUDA:

TRENDS IN CASES & DEATHS: As of 06 November 2021, Bermuda reported 5,688 confirmed cases of Coronavirus Disease 2019 (COVID-19) with 3 new cases within the last 24-48hr period. There were 56 active cases (1.0% of total cases), an increase of 16.7% since the last report (5 Nov 2021). Of the active cases, 6 (10.7%) are hospitalized, with a significant reduction of this proportion (by 43%) since the last reporting period (5 Nov 2021). New cases and deaths have decreased by 3.1% and 33.3% respectively for EW 44.

Table 2. Summary as at end of Epidemiological Week 44.

| Confirmed Cases | New Cases in last 7 days | % Change in New Cases in last 7 days | Deaths | New Deaths in last 7 days | % Change in Deaths in last 7 days | Positivity Rate | % Change in Positivity Rate in last 7 days |
|-----------------|--------------------------|--------------------------------------|--------|---------------------------|-----------------------------------|-----------------|--|
| 5,647 | 31 | -3.1% | 89 | 2 | -33.3% | 0.3% | +50.0% |

Figures 7. Cases and deaths as of 06 Nov 2021 (updated 08 Nov 2021).



GOVERNMENT RESPONSE:

All travellers to Bermuda must follow the requirements set out in the Quarantine (COVID-19) (No.3) Order 2020.

[http://www.bermulaws.bm/laws/Consolidated%20Laws/Quarantine%20\(COVID-19\)%20\(No.%203\)%20Order%202020.pdf](http://www.bermulaws.bm/laws/Consolidated%20Laws/Quarantine%20(COVID-19)%20(No.%203)%20Order%202020.pdf)

As of 1 November 2021, gatherings are restricted to no more than 30 persons, while special permission may be granted from Government for larger gatherings.

As of 16 September 2021, curfew is from 12:30 a.m. to 5:00 a.m. daily. On 23 September 2021, the Minister of Health announced that unvaccinated travellers will need to quarantine for 14 days at home and will wear electronic and red wristbands. Testing will be on arrival and Day 14.

CAYMAN ISLANDS:

TRENDS IN CASES & DEATHS: As of 09 Nov 2021, Cayman had **3,427 confirmed cases** of Coronavirus Disease 2019 (COVID-19) with **73 new cases** reported in the last 24 hrs. Active cases have increased by 46.0% since the last reporting period (of 05 November 2021) and now comprise 63.8% of confirmed cases. A **total of 2 COVID-19 related deaths have been recorded since March 2020**, with no new deaths occurring within the last 24hrs. A total of **177,985** samples were tested for COVID-19, with a new **overall positivity rate of 1.9%**.

Table 3. Summary as at end of Epidemiological Week 44.

| Confirmed Cases | New Cases in last 7 days | % Change in New Cases in last 7 days | Deaths | New Deaths in last 7 days | % Change in Deaths in last 7 days | Positivity Rate | % Change in Positivity Rate in last 7 days |
|-----------------|--------------------------|--------------------------------------|--------|---------------------------|-----------------------------------|-----------------|--|
| 3,099 | 998 | +23.4% | 2 | 0 | 0% | 12.6% | +28.6% |

Figure 8. Daily COVID-19 Summary.



GOVERNMENT RESPONSE

The Isolation Support Call Centre was activated on 25 October 2021 and aims to assist with receiving and processing requests for humanitarian food (groceries) assistance for vulnerable persons who have been directed by Public Health to isolate due to potential or actual exposure to COVID-19.

On 24 September 2021, the Control and Management of COVID-19 Regulations, 2021 under the Public Health Act came into Force.

<http://gazettes.gov.ky/portal/pls/portal/docs/1/13108558.PDF>

PAHO CO UPDATE:

PILLAR 1 – COORDINATION, PLANNING, FINANCING, AND MONITORING

- PAHO CO continued its updating of the proposal for Jamaica for the COVID-19 response funding through the USAID American Rescue Plan, based on feedback from the donors.

Dialogue was held with the Permanent Secretary and MOHW counterparts on 10 November 2021 to obtain additional information on one priority component of the proposal. The revised proposal will be re-submitted in the week of 14 November 2021.

- b. PAHO CO prepared and submitted the detailed budget and justification to PAHO, WDC for the EU RESEMBID/Expertise France project proposal for the Cayman Islands. The quality review was completed– 8 November 2021.
- c. PAHO CO continued the finalization of obligations of PAHO Assessed Contributions for COVID-19 response expiring in December 2021. Preparations for carry-over of funds to 2022 is on-going as determined by Grant agreements – 11 November 2021.
- d. PAHO CO remains embedded in the MOHW, JAM EOC and provides 24-hr technical support and guidance, including at the daily EOC briefing meeting.
- e. PAHO CO maintained the technical lead for Health for the COVID-19 response within the UNCT and the Government of Jamaica (GOJ) system.

PILLAR 3 – SURVEILLANCE, EPIDEMIOLOGICAL INVESTIGATION, CONTACT TRACING & ADJUSTMENT OF PUBLIC HEALTH AND SOCIAL MEASURES

- a. PAHO CO provided reminders to the IHR NFP, JAM on follow-up of information received from PAHO IHR on contacts of travellers after departure from Jamaica and the provision of reports – during the week.

PILLAR 4 – POINTS OF ENTRY, INTERNATIONAL TRAVEL AND TRANSPORT, AND MASS GATHERINGS

- a. Arrangements were finalized with the MOHW IHR Director for the IHR Assessments of the Contingent Designated Points of Entry, from 22 - 24 November 2021 and the meeting of the IHR Stakeholders Advisory Group on 25 November 2021. – 10 November 2021.

PILLAR 7 – CASE MANAGEMENT, CLINICAL OPERATIONS AND THERAPEUTICS

- a. Procurement of medical equipment and supplies and HEOC equipment was finalized utilizing MOHW approved priority list – 11 November 2021.

PILLAR 9: MAINTAINING ESSENTIAL HEALTH SERVICES AND SYSTEMS

- a. For the Smart Health Care Facilities project, 9 Health Centres are now at the stage of practical completion, including the St. Ann’s Bay Health Centre which is the first Health Centre to complete major retrofitting. Arrangements will be made for the official Handing-Over Event.
- b. Preparations were advanced for activities during World Antimicrobial Awareness Week from 18 – 24 November 2021. – 12 November 2021.

PILLAR 10 - VACCINATION

- a. PAHO CO provided information to MOHW on the delivery of COVID-19 vaccines during the week-11 November 2021
- a. Terms of Reference were revised for a Health Records Technician (Medical Coder) to facilitate data retrieval at the KPH for a retrospective study.
- b. On-going technical guidance was provided for the MOHW, Jamaica on vaccine supply and delivery.

GAPS / CHALLENGES

1. Vaccine hesitancy remains a challenge in Jamaica including among health care workers. Community engagement has been heightened this week with additional vaccination sites being opened in collaboration with the private sector to improve access.
2. The MOHW, Jamaica needs to update the health sector COVID-19 program, protocols, and budget to guide support for the response.

NEEDS

1. JAMAICA

- a. Health EOC strengthening.
- b. Support for National Laboratory Services long-term development plan.
- c. PPEs, laboratory equipment, reagents, and supplies.
- d. Medical equipment and supplies for isolation and quarantine facilities, wards, and rooms.
- e. Strengthening of pandemic preparedness planning.

2. BERMUDA

- a. Strengthening of the Health Disaster Management Programme.

3. CAYMAN ISLANDS

- a. Strengthening of the Health Disaster Management Programme and surveillance were noted as priorities to enhance the COVID-19 and any other responses for health emergencies.