



Demographics and socioeconomic

Total Population (in 1000) (2020)	3,473.73
Population <1 year of age (in 1000) (2020)	46.60
Population 1 year of age (in 1000) (2020)	47.15
Population <5 years of age (in 1000) (2020)	236.66
Women of childbearing age (in 1000) (2020)	2,379.73
Infant Mortality Rate (per 1000 live births) (2018)	6.8
Gross national income (US\$ per capita) current value (2020)	15,830.0
National Health Expenditure Public (2018)	6.7
National Health Expenditure Private (2018)	2.5

Immunization system highlights

- There is a comprehensive multi-year plan for immunization covering 2015-2020.
- A standing national technical advisory group on immunization (NITAG) with formal written terms of reference exists. The group met 4 times in 2020.
- 100% of spending on routine immunization is financed using government funds.
- 100% of spending on vaccine purchases is financed using government funds.
- A national nominal electronic immunization registry is in place.

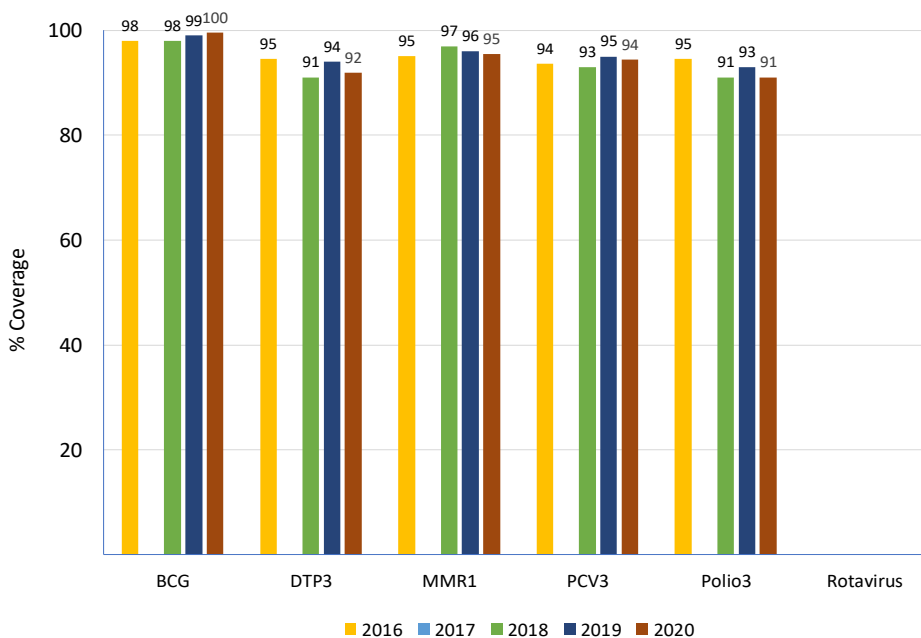
Vaccine Introduction

	Year
Bacterial Meningitis	
<i>Haemophilus influenzae</i> type b	1994
Hepatitis B	1999
HPV	2013
Influenza	1996
MMR1	1982
MMR2	1992
Pentavalent	1999
Pneumococcal Conjugate	2008
Rotavirus	
Tdap	
Tetavalent DPT-Hib or DPT-HepB	
Yellow Fever	

Immunization Schedule

URY	Doses					
	1	2	3	4	5	6
BCG	B					
HepB pediatric	M2	M4	M6	M15		
DTP-Hib						
DTP-Hib-HepB	M2	M4	M6	M15		
DTP-Hib-IPV						
DTP-Hib-HepB-IPV						
DTP					Y5	
Influenza pediatric	M6-Y5					
IPV	M2	M4	M6	Y5		
OPV						
MMR	M12	Y5				
Pneumoco conjugate	M2	M4	Y1	>Y2		
Rotavirus						
Td	Y22					
Tdap						Y11
HPV						

Vaccination Coverage



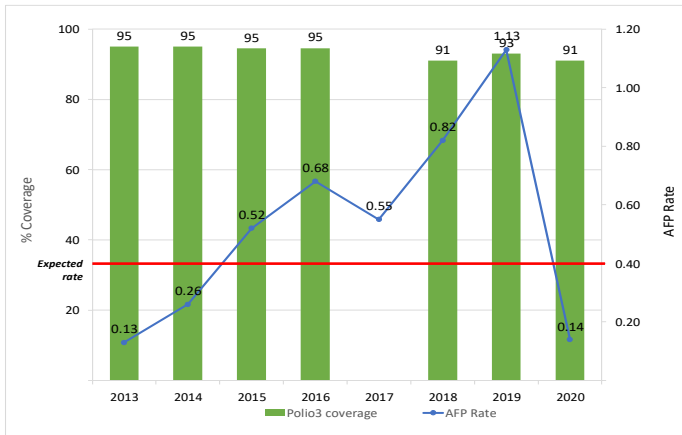
Surveillance indicators

Acute flaccid paralysis (AFP)	2020
Number of AFP suspected cases	1
AFP rate per 100,000 population <15 years old	0.14
% of cases with 1 adequate samples	100
% of cases investigated within <48 hours	0
% sites reporting	0

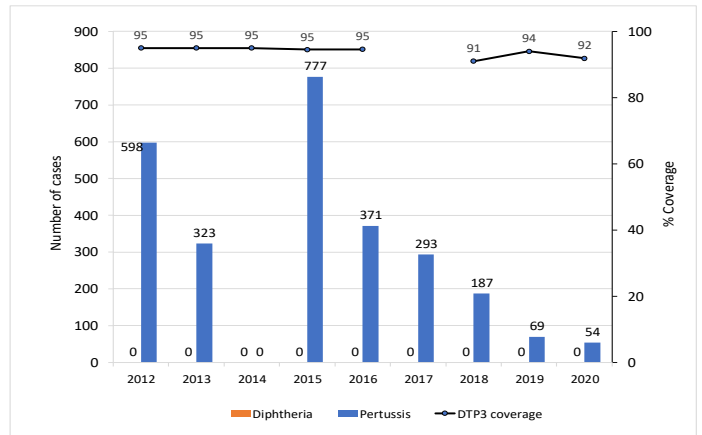
Measles-rubella (MR)	2020
Number of MR suspected cases	11
% of cases with adequate investigation	64
% of cases with adequate blood samples	27
% of samples received in laboratory <=5 days	38
% of laboratory samples results <=4 days	38



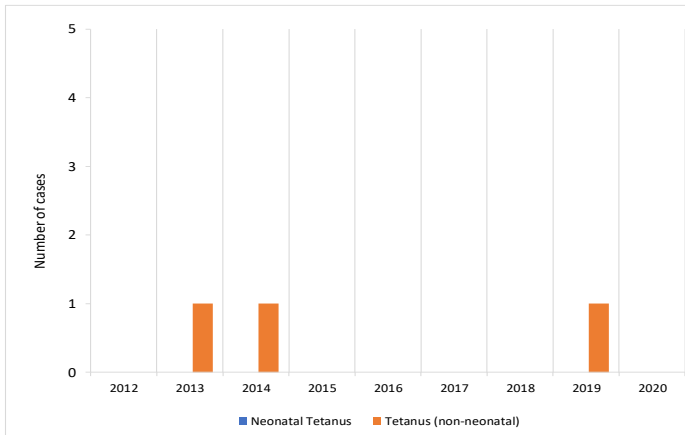
Polio3 coverage and AFP rate per 100,000 children <15 years of age



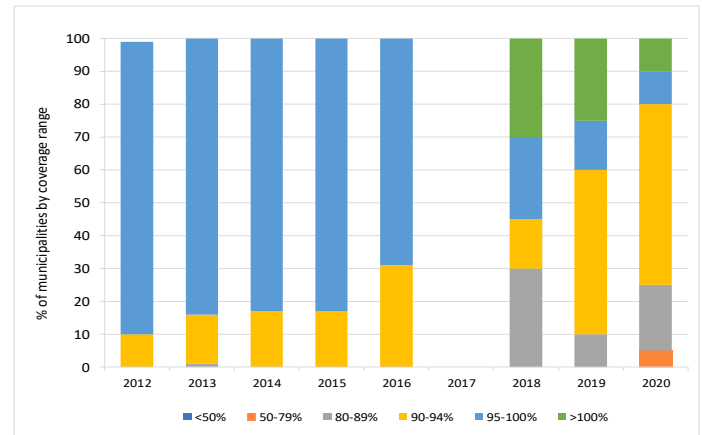
DTP3 coverage and number of reported diphtheria and pertussis cases



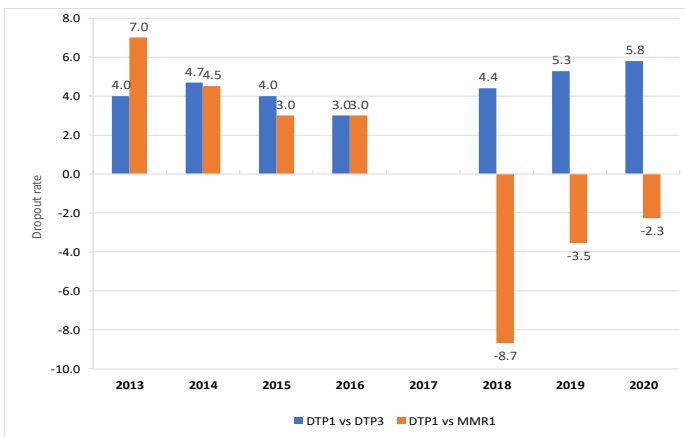
Number of tetanus (no neonatal) and neonatal tetanus cases



Proportion of municipalities by coverage range with DTP3 in children <1 years of age



DTP1-DTP3 and DTP1-MMR1 Dropout Rate



Vaccine Stockout

URY	2013	2014	2015	2016	2017	2018	2019	2020
AD syringes	●	●	●	●	●	●	●	●
BCG	●	●	●	●	●	●	●	●
Disposable syringes	●	●	●	●	●	●	●	●
DTP	●	●	●	●	●	●	●	●
HepB	●	●	●	●	●	●	●	●
Hib	●	●	●	●	●	●	●	●
Influenza	●	●	●	●	●	●	●	●
IPV	●	●	●	●	●	●	●	●
Measles	●	●	●	●	●	●	●	●
Pneumo. conjugate	●	●	●	●	●	●	●	●
Polio	●	●	●	●	●	●	●	●
Reconst. syringes	●	●	●	●	●	●	●	●
Rotavirus	●	●	●	●	●	●	●	●
Safety boxes	●	●	●	●	●	●	●	●
Tdap	●	●	●	●	●	●	●	●
TT	●	●	●	●	●	●	●	●
Yellow fever	●	●	●	●	●	●	●	●

Legend

- NB/nb-newborn
- M/m-month
- Y/y-year
- WCBA-women of childbearing age
- with stockout
- no stockout
- no data available