



Demographics and socioeconomic

Total Population (in 1000) (2020)	183.63
Population <1 year of age (in 1000) (2020)	2.09
Population 1 year of age (in 1000) (2020)	2.14
Population <5 years of age (in 1000) (2020)	10.83
Women of childbearing age (in 1000) (2020)	132.93
Infant Mortality Rate (per 1000 live births) (2017)	12.9
Gross national income (US\$ per capita) current value (2020)	8,790.0
National Health Expenditure Public (2018)	2.1
National Health Expenditure Private (2018)	2.3

Immunization system highlights

- There is no comprehensive multi-year plan (MYP) for immunization.
- A standing national technical advisory group on immunization (NITAG) with formal written terms of reference exists. The group met 5 times in 2020.
- No information is available on spending on routine immunization financed using government funds.
- No information is available on spending on vaccine purchase financed using government funds.
- A national nominal electronic immunization registry implementation is in progress.

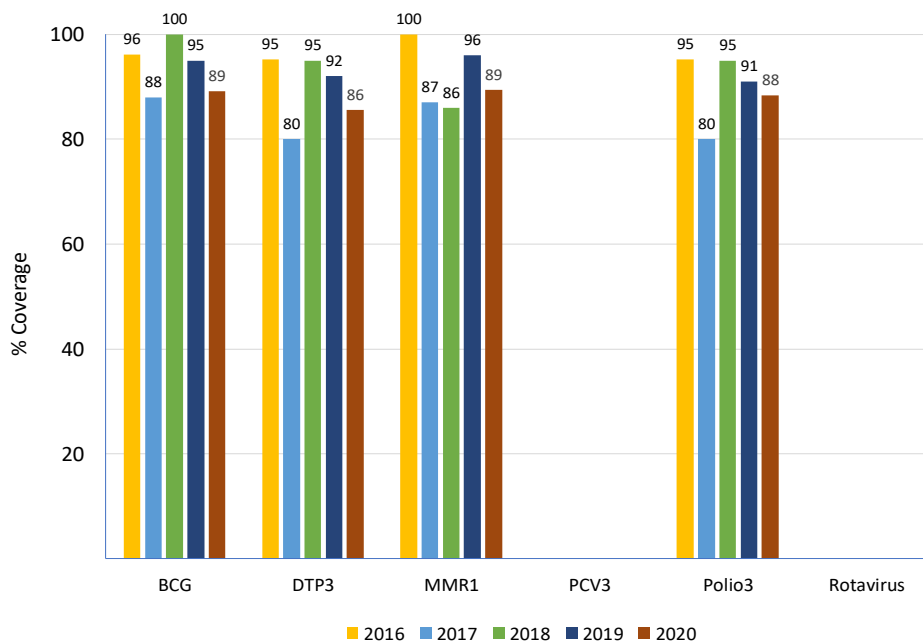
Vaccine Introduction

	Year
Bacterial Meningitis	
<i>Haemophilus influenzae</i> type b	2002
Hepatitis B	2002
HPV	2019
Influenza	2006
MMR1	1986
MMR2	1991
Pentavalent	2002
Pneumococcal Conjugate	
Rotavirus	
Tdap	
Tetavalent DPT-Hib or DPT-HepB	
Yellow Fever	

Immunization Schedule

LCA	Doses					
	1	2	3	4	5	6
BCG	M2					
HepB pediatric	B					
DTP-Hib						
DTP-Hib-HepB	M2	M4	M6			
DTP-Hib-IPV						
DTP-Hib-HepB-IPV						
DTP				M18	Y5	
Influenza pediatric						
IPV	M2					
OPV		M4	M6	M18	Y5	Y11-Y12
MMR	M12	M18				
Pneumoco conjugate	M2	M4	M6			
Rotavirus						
Td						Y11-Y12
Tdap						
HPV	Y11-Y12	Y11-Y12				

Vaccination Coverage



Surveillance indicators

Acute flaccid paralysis (AFP) - (CARPHA) 2020

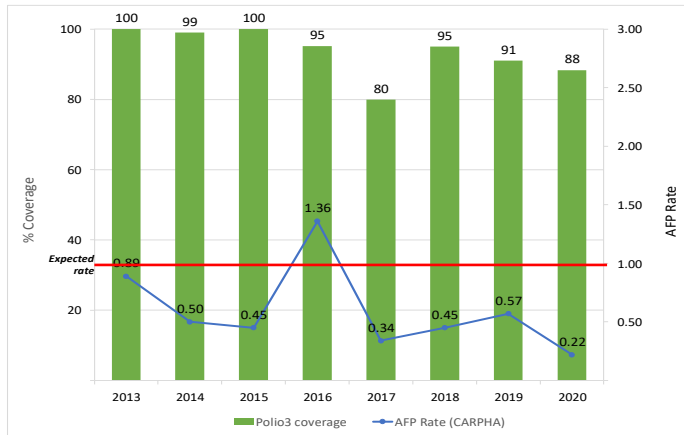
Number of AFP suspected cases	4
AFP rate per 100,000 population <15 years old	0.22
% of cases with 1 adequate samples	25
% of cases investigated within <48 hours	50
% sites reporting	72

Measles-rubella (MR) - (CARPHA) 2020

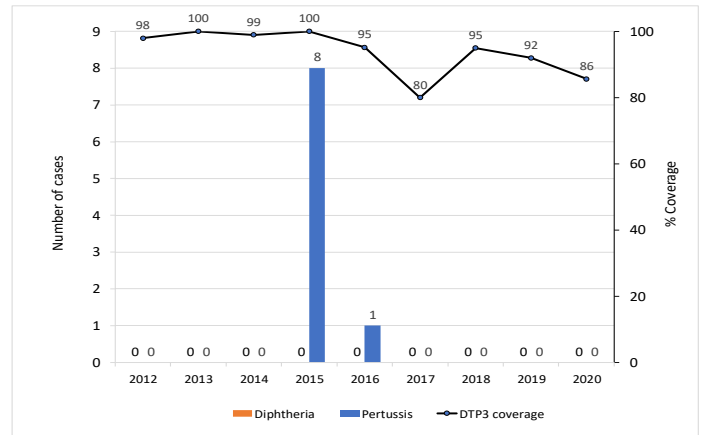
Number of MR suspected cases	55
% of cases with adequate investigation	60
% of cases with adequate blood samples	96
% of samples received in laboratory <=5 days	22
% of laboratory samples results <=4 days	76



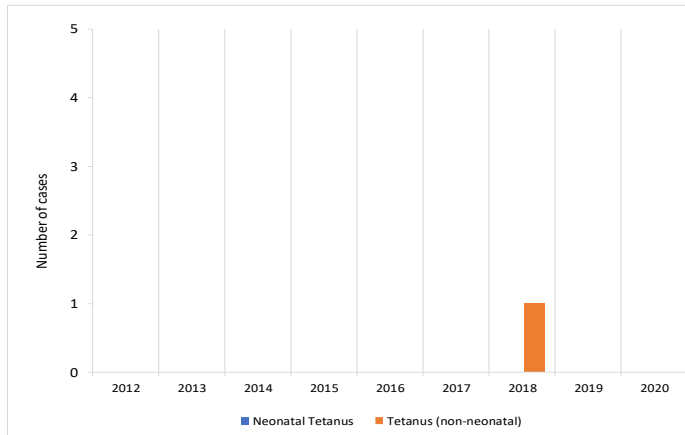
Polio3 coverage and AFP rate per 100,000 children <15 years of age



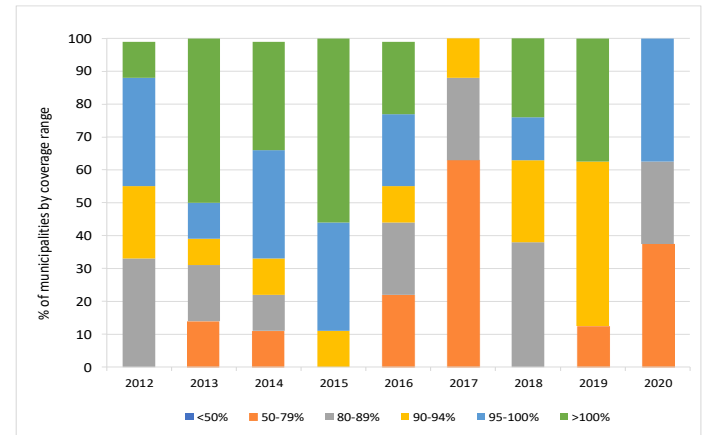
DTP3 coverage and number of reported diphtheria and pertussis cases



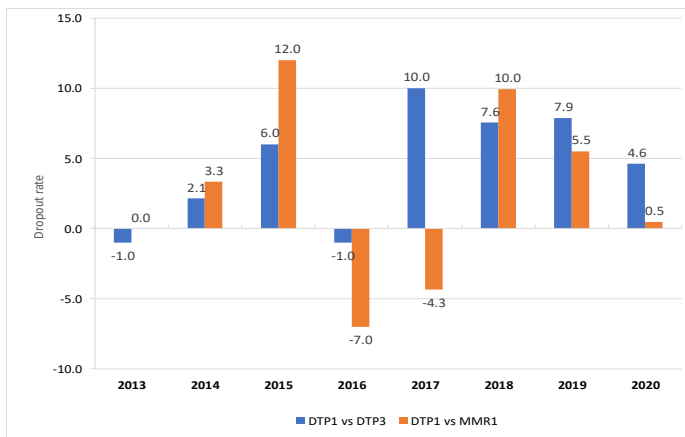
Number of tetanus (no neonatal) and neonatal tetanus cases



Proportion of municipalities by coverage range with DTP3 in children <1 years of age



DTP1-DTP3 and DTP1-MMR1 Dropout Rate



Vaccine Stockout

LCA	2013	2014	2015	2016	2017	2018	2019	2020
AD syringes		●	●	●	●		●	●
BCG	●	●	●	●	●	●	●	●
Disposable syringes	●	●	●	●	●	●	●	●
DTP	●	●	●	●	●	●	●	●
HepB	●	●	●	●	●	●	●	●
Hib	●	●	●	●	●			●
Influenza	●	●	●	●	●	●	●	●
IPV			●	●	●	●	●	●
Measles		●	●	●	●	●	●	●
Pneumo. conjugate				●	●	●	●	●
Polio	●	●	●	●	●	●	●	●
Reconst. syringes					●		●	●
Rotavirus								●
Safety boxes				●	●		●	●
Tdap				●	●			
TT	●	●	●	●	●	●	●	●
Yellow fever	●	●	●	●	●	●	●	●

Legend
 NB/nb-newborn
 M/m -month
 Y/y-year
 WCBA-women of childbearing age
 ● with stockout
 ● no stockout
 no data available