



Demographics and socioeconomic

Total Population (in 1000) (2020)	6,624.55
Population <1 year of age (in 1000) (2020)	129.35
Population 1 year of age (in 1000) (2020)	130.71
Population <5 years of age (in 1000) (2020)	656.94
Women of childbearing age (in 1000) (2020)	5,541.80
Infant Mortality Rate (per 1000 live births) (2018)*	12.2
Gross national income (US\$ per capita) current value (2020)	1,850.0
National Health Expenditure Public (2018)	5.1
National Health Expenditure Private (2018)	3.0

* preliminary data

Immunization system highlights

- There is a comprehensive multi-year plan for immunization covering 2020-2021.
- A standing national technical advisory group on immunization (NITAG) with formal written terms of reference exists. The group met 2 times in 2020.
- 89% of spending on routine immunization is financed using government funds.
- 89% of spending on vaccine purchases is financed using government funds.
- A national nominal electronic immunization registry implementation is in progress.

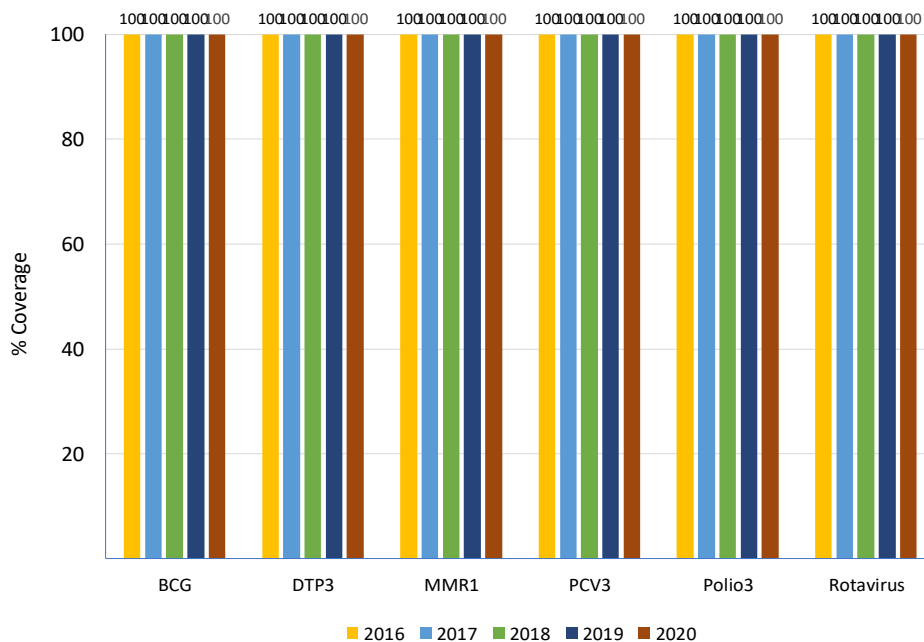
Vaccine Introduction

	Year
Bacterial Meningitis	
<i>Haemophilus influenzae</i> type b	1999
Hepatitis B	1999
HPV	
Influenza	2007
MMR1	1998
MMR2	2017
Pentavalent	1999
Pneumococcal Conjugate	2010
Rotavirus	2006
Tdap	
Tetavalent DPT-Hib or DPT-HepB	
Yellow Fever	

Immunization Schedule

NIC	Doses					
	1	2	3	4	5	6
BCG	B					
HepB pediatric						
DTP-Hib						
DTP-Hib-HepB	M2	M4	M6			
DTP-Hib-IPV						
DTP-Hib-HepB-IPV						
DTP				M18	Y6	
Influenza pediatric						
IPV	M2					
OPV		M4	M6			
MMR	M12	M18				
Pneumoco conjugate	M2	M4	M6			
Rotavirus	M2	M4				
Td	Y10	Y20				
Tdap						
HPV						

Vaccination Coverage



Surveillance indicators

Acute flaccid paralysis (AFP)	2020
Number of AFP suspected cases	18
AFP rate per 100,000 population <15 years old	0.92
% of cases with 1 adequate samples	78
% of cases investigated within <48 hours	89
% sites reporting	100

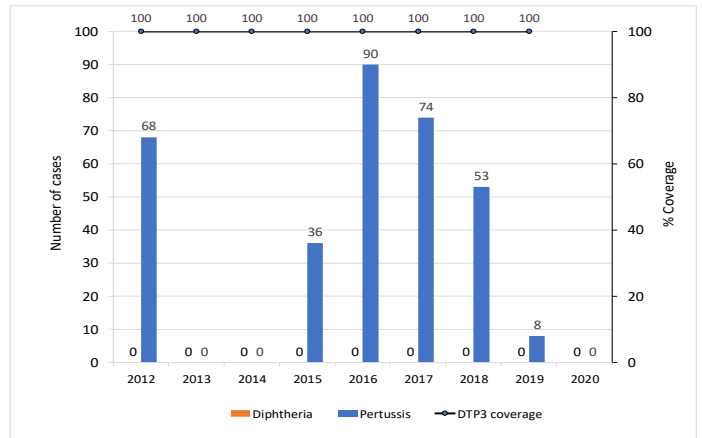
Measles-rubella (MR)	2020
Number of MR suspected cases	125
% of cases with adequate investigation	95
% of cases with adequate blood samples	97
% of samples received in laboratory <=5 days	94
% of laboratory samples results <=4 days	97



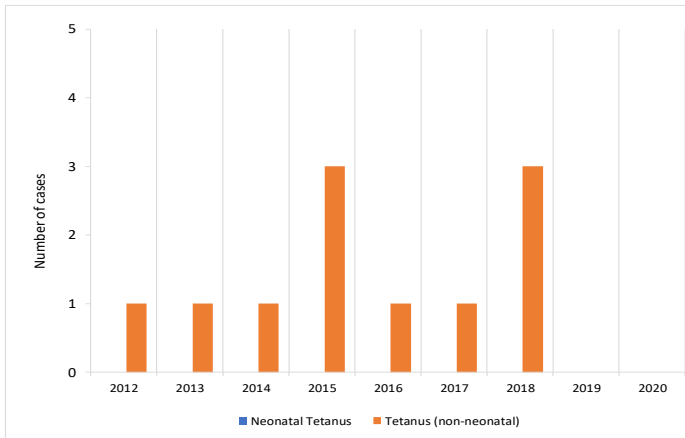
Polio3 coverage and AFP rate per 100,000 children <15 years of age



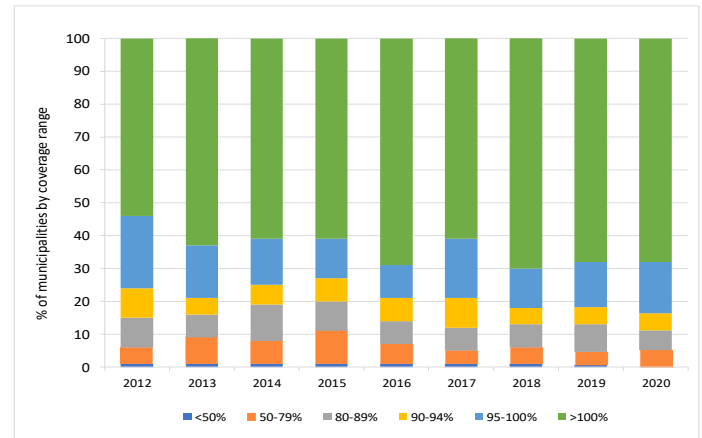
DTP3 coverage and number of reported diphtheria and pertussis cases



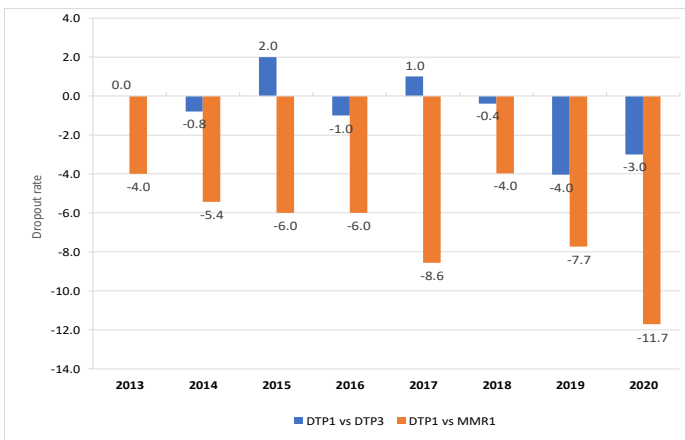
Number of tetanus (no neonatal) and neonatal tetanus cases



Proportion of municipalities by coverage range with DTP3 in children <1 years of age



DTP1-DTP3 and DTP1-MMR1 Dropout Rate



Vaccine Stockout

NIC	2013	2014	2015	2016	2017	2018	2019	2020
AD syringes	●	●	●	●	●	●	●	●
BCG	●	●	●	●	●	●	●	●
Disposable syringes			●					●
DTP	●	●	●	●	●	●	●	●
HepB	●	●	●	●	●	●	●	●
Hib	●	●	●	●	●	●	●	●
Influenza	●	●	●	●	●	●	●	●
IPV			●	●	●	●	●	●
Measles	●	●	●	●	●	●	●	●
Pneumo. conjugate	●	●	●	●	●	●	●	●
Polio	●	●	●	●	●	●	●	●
Reconst. syringes	●	●	●			●	●	●
Rotavirus	●	●	●	●	●	●	●	●
Safety boxes	●	●	●	●	●	●	●	●
Tdap			●					
TT	●	●	●	●	●	●	●	●
Yellow fever	●	●	●	●	●	●	●	●

Legend

- NB/nb-newborn
- M/m-month
- Y/y-year
- WCBA-women of childbearing age
- with stockout
- no stockout
- no data available