



Demographics and socioeconomic

Total Population (in 1000) (2020)	2,961.16
Population <1 year of age (in 1000) (2020)	44.41
Population 1 year of age (in 1000) (2020)	45.63
Population <5 years of age (in 1000) (2020)	230.82
Women of childbearing age (in 1000) (2020)	2,247.70
Infant Mortality Rate (per 1000 live births) (2016)*	20.9
Gross national income (US\$ per capita) current value (2020)	4,620.0
National Health Expenditure Public (2018)	3.9
National Health Expenditure Private (2018)	2.0

* data have one or more of the following limitations: coverage of maternal deaths and live births, differences in the maternal death definition, different denominators used, the analysis of only confirmed maternal deaths, and coverage of infant and neonatal deaths

Immunization system highlights

- There is no comprehensive multi-year plan (MYP) for immunization.
- A standing national technical advisory group on immunization (NITAG) with formal written terms of reference exists. The group met 2 times in 2020.
- 100% of spending on routine immunization is financed using government funds.
- 100% of spending on vaccine purchases is financed using government funds.
- A national nominal electronic immunization registry implementation is in progress.

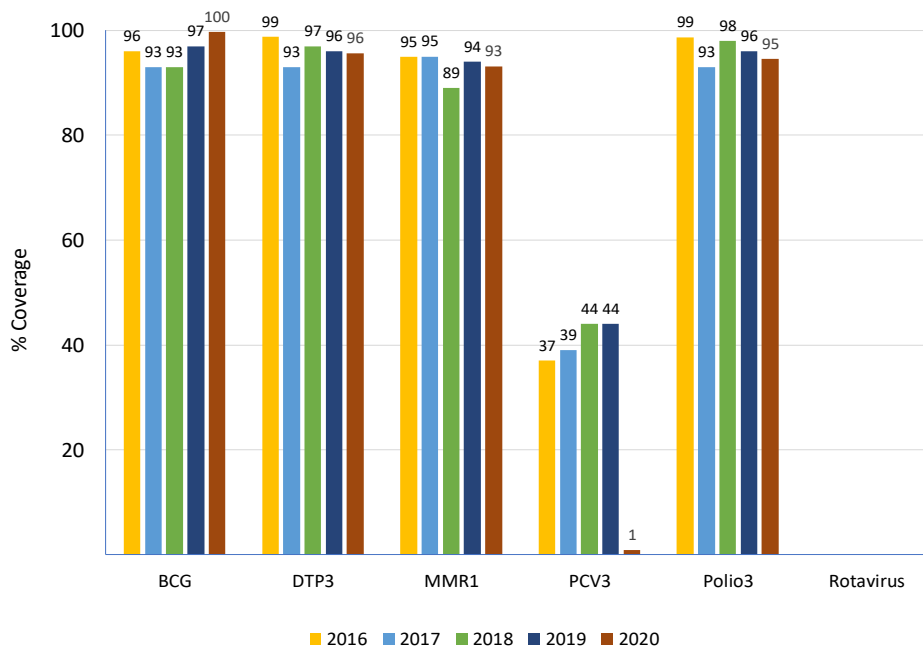
Vaccine Introduction

	Year
Bacterial Meningitis	
<i>Haemophilus influenzae</i> type b	2003
Hepatitis B	2003
HPV	2017
Influenza	2006
MMR1	1993
MMR2	2002
Pentavalent	2003
Pneumococcal Conjugate	
Rotavirus	
Tdap	
Tetavalent DPT-Hib or DPT-HepB	
Yellow Fever	

Immunization Schedule

JAM	Doses					
	1	2	3	4	5	6
BCG	B					
HepB pediatric	B	M3	M6			
DTP-Hib						
DTP-Hib-HepB	W6	M3	M6			
DTP-Hib-IPV						
DTP-Hib-HepB-IPV						
DTP				M18	Y4-Y6	
Influenza pediatric	M6-Y17					
IPV	W6					
OPV		M3	M6	M18	Y4-Y6	
MMR	M12	M18				
Pneumoco conjugate	W6	M3	M6	M15		
Rotavirus						
Td	1st contact					
Tdap						
HPV						

Vaccination Coverage



Surveillance indicators

Acute flaccid paralysis (AFP) - (CARPHA) 2020

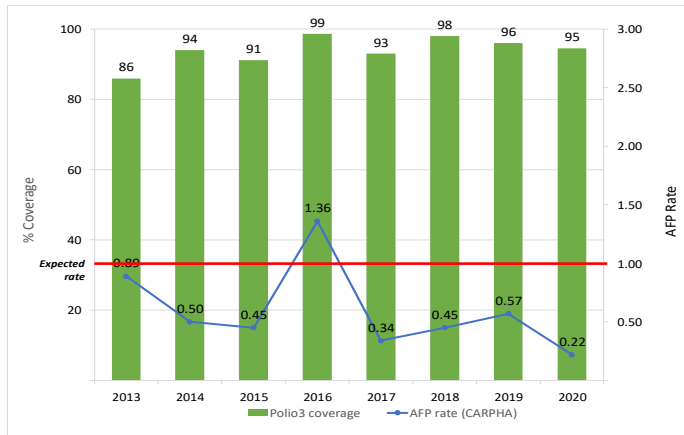
Number of AFP suspected cases	4
AFP rate per 100,000 population <15 years old	0.22
% of cases with 1 adequate samples	25
% of cases investigated within <48 hours	50
% sites reporting	72

Measles-rubella (MR) - (CARPHA) 2020

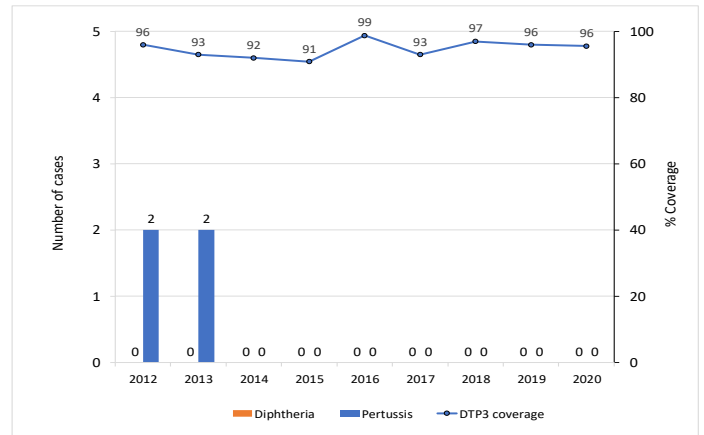
Number of MR suspected cases	55
% of cases with adequate investigation	60
% of cases with adequate blood samples	96
% of samples received in laboratory <=5 days	22
% of laboratory samples results <=4 days	76



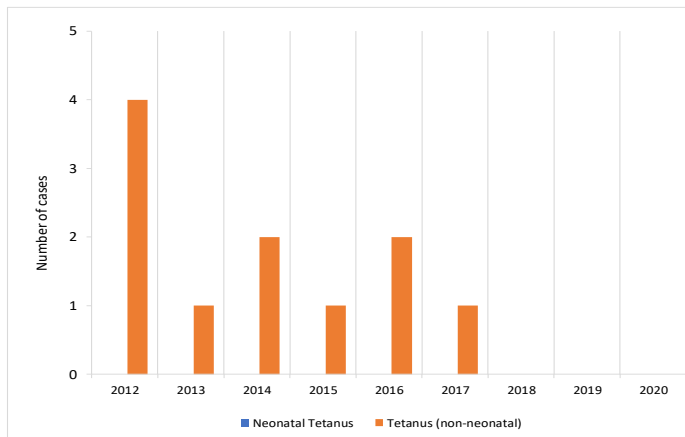
Polio3 coverage and AFP rate per 100,000 children <15 years of age



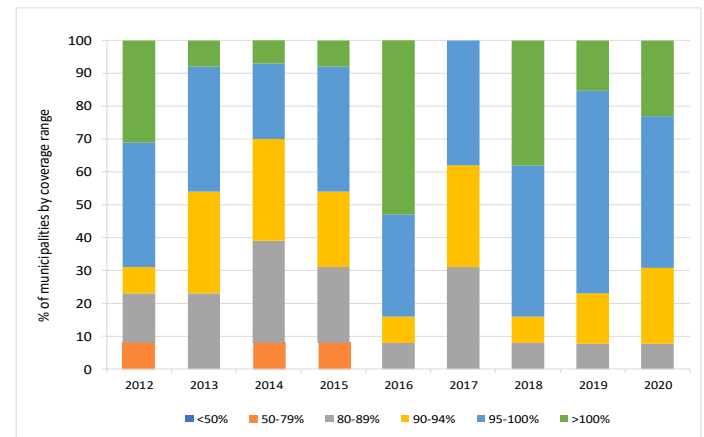
DTP3 coverage and number of reported diphtheria and pertussis cases



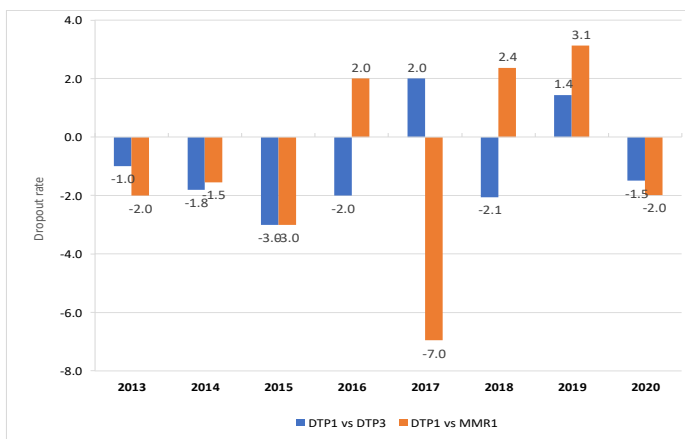
Number of tetanus (no neonatal) and neonatal tetanus cases



Proportion of municipalities by coverage range with DTP3 in children <1 years of age



DTP1-DTP3 and DTP1-MMR1 Dropout Rate



Vaccine Stockout

JAM	2013	2014	2015	2016	2017	2018	2019	2020
AD syringes							●	●
BCG	●	●	●	●	●	●	●	●
Disposable syringes	●	●	●	●	●	●	●	●
DTP	●	●	●	●	●	●	●	●
HepB	●	●	●	●	●	●	●	●
Hib	●	●	●	●	●	●	●	●
Influenza	●	●	●	●	●	●	●	●
IPV		●	●	●	●	●	●	●
Measles	●	●	●	●	●	●	●	●
Pneumo. conjugate	●	●	●	●	●	●	●	●
Polio	●	●	●	●	●	●	●	●
Reconst. syringes	●	●	●	●	●	●	●	●
Rotavirus								●
Safety boxes	●	●	●	●	●	●	●	●
Tdap		●						●
TT	●	●	●	●	●	●	●	●
Yellow fever	●	●	●	●	●	●	●	●

Legend
 NB/nb-newborn
 M/m -month
 Y/y-year
 WCBA-women of childbearing age
 ● with stockout
 ● no stockout
 no data available