



### Demographics and socioeconomic

Total Population (in 1000) (2020)	786.56
Population <1 year of age (in 1000) (2020)	14.27
Population 1 year of age (in 1000) (2020)	14.64
Population <5 years of age (in 1000) (2020)	73.86
Women of childbearing age (in 1000) (2020)	621.92
Infant Mortality Rate (per 1000 live births) (2018)*	18.9
Gross national income (US\$ per capita) current value (2020)	6,600.0
National Health Expenditure Public (2018)	3.7
National Health Expenditure Private (2018)	2.1

\* data have one or more of the following limitations: coverage of maternal deaths and live births, differences in the maternal death definition, different denominators used, the analysis of only confirmed maternal deaths, and coverage of infant and neonatal deaths

### Immunization system highlights

- There is a comprehensive multi-year plan for immunization covering 2015-2020.
- A standing national technical advisory group on immunization (NITAG) with formal written terms of reference exists. The group met 2 times in 2020.
- No information is available on spending on routine immunization financed using government funds.
- No information is available on spending on vaccine purchase financed using government funds.
- A national nominal electronic immunization registry implementation is in progress.

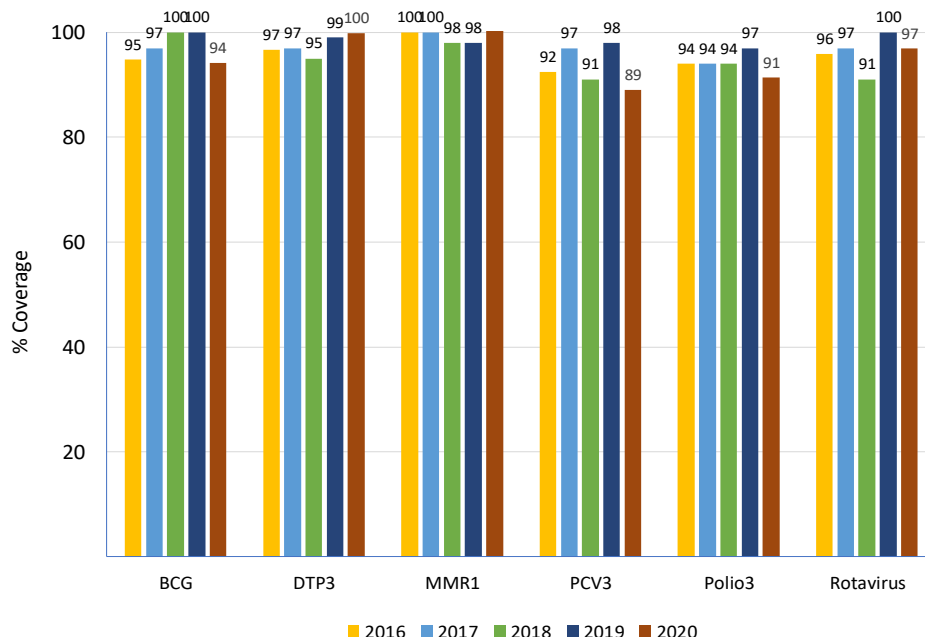
### Vaccine Introduction

	Year
Bacterial Meningitis	
<i>Haemophilus influenzae</i> type b	2001
Hepatitis B	2001
HPV	
Influenza	
MMR1	1995
MMR2	2001
Pentavalent	2001
Pneumococcal Conjugate	2011
Rotavirus	2010
Tdap	
Tetavalent DPT-Hib or DPT-HepB	
Yellow Fever	1980

### Immunization Schedule

GUY	Doses					
	1	2	3	4	5	6
BCG	B-W6					
HepB pediatric	B					
DTP-Hib						
DTP-Hib-HepB	M2	M4	M6			
DTP-Hib-IPV						
DTP-Hib-HepB-IPV						
DTP				M18	M45	
Influenza pediatric						
IPV	M2	M4				
OPV			M6	18M	M45	
MMR	M12	M18				
Pneumoco conjugate	M2	M4	M6			
Rotavirus	M2	M4				
Td	1st contact	+W4				
Tdap						
HPV	Y9-Y16	+M6				

### Vaccination Coverage



### Surveillance indicators

#### Acute flaccid paralysis (AFP) - (CARPHA) 2020

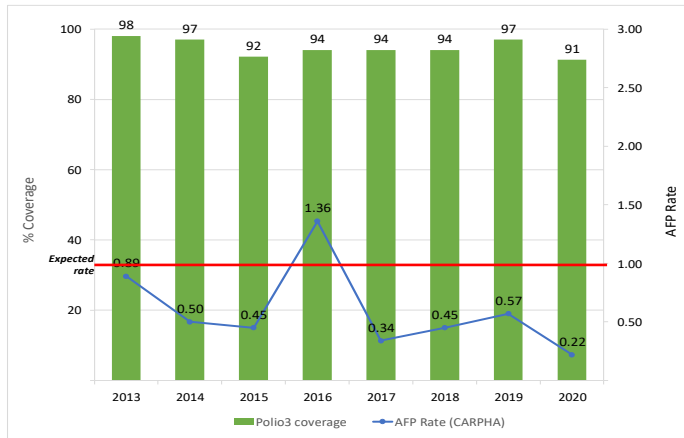
Number of AFP suspected cases	4
AFP rate per 100,000 population <15 years old	0.22
% of cases with 1 adequate samples	25
% of cases investigated within <48 hours	50
% sites reporting	72

#### Measles-rubella (MR) - (CARPHA) 2020

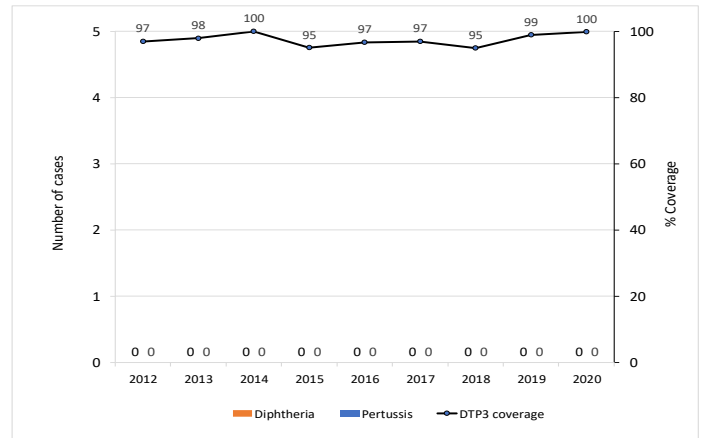
Number of MR suspected cases	55
% of cases with adequate investigation	60
% of cases with adequate blood samples	96
% of samples received in laboratory <=5 days	22
% of laboratory samples results <=4 days	76



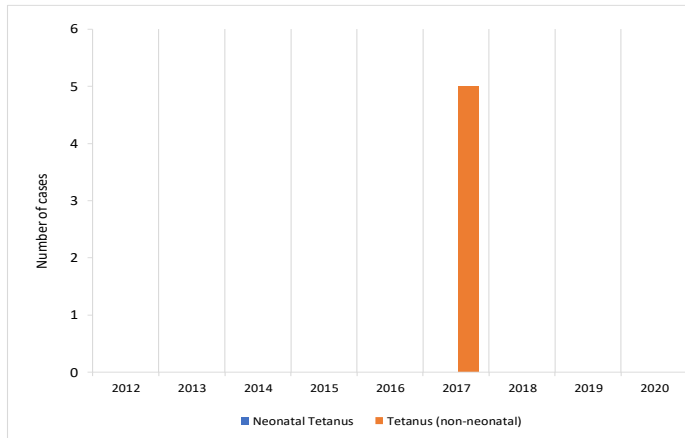
### Polio3 coverage and AFP rate per 100,000 children <15 years of age



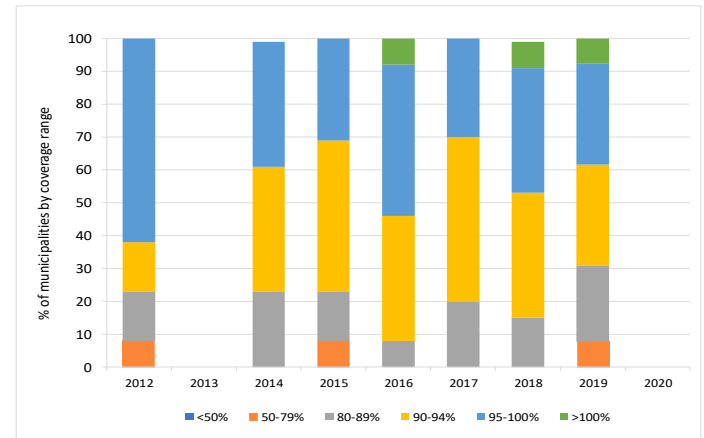
### DTP3 coverage and number of reported diphtheria and pertussis cases



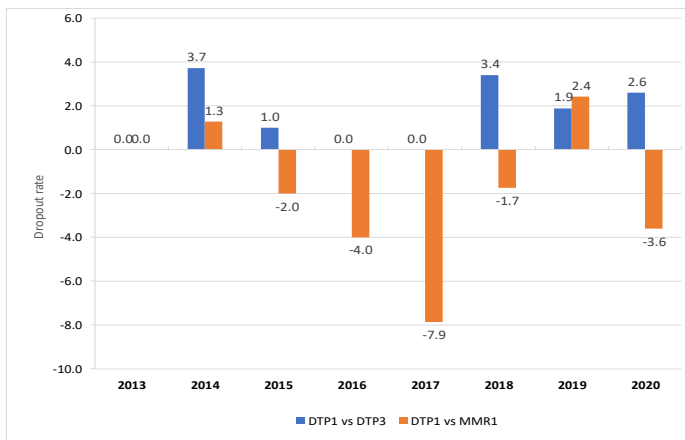
### Number of tetanus (no neonatal) and neonatal tetanus cases



### Proportion of municipalities by coverage range with DTP3 in children <1 years of age



### DTP1-DTP3 and DTP1-MMR1 Dropout Rate



**Legend**  
 NB/nb-newborn  
 M/m -month  
 Y/y-year  
 WCBA-women of childbearing age  
 ● with stockout  
 ● no stockout  
 ○ no data available

### Vaccine Stockout

GUY	2013	2014	2015	2016	2017	2018	2019	2020
AD syringes	●	●	●	●	●	●	●	●
BCG	●	●	●	●	●	●	●	●
Disposable syringes	●	●	●	●	●	●	●	●
DTP	●	●	●	●	●	●	●	●
HepB	●	●	●	●	●	●	●	●
Hib	●	●	●	●	●	●	●	●
Influenza	●	●	●	●	●	●	●	●
IPV	●	●	●	●	●	●	●	●
Measles	●	●	●	●	●	●	●	●
Pneumo. conjugate	●	●	●	●	●	●	●	●
Polio	●	●	●	●	●	●	●	●
Reconst. syringes	●	●	●	●	●	●	●	●
Rotavirus	●	●	●	●	●	●	●	●
Safety boxes	●	●	●	●	●	●	●	●
Tdap	●	●	●	●	●	●	●	●
TT	●	●	●	●	●	●	●	●
Yellow fever	●	●	●	●	●	●	●	●