



Demographics and socioeconomic

Total Population (in 1000) (2020)	393.25
Population <1 year of age (in 1000) (2020)	5.99
Population 1 year of age (in 1000) (2020)	5.58
Population <5 years of age (in 1000) (2020)	27.06
Women of childbearing age (in 1000) (2020)	295.97
Infant Mortality Rate (per 1000 live births) (2016)	16.0
Gross national income (US\$ per capita) current value (2020)	27,780.0
National Health Expenditure Public (2018)	3.1
National Health Expenditure Private (2018)	3.1

Immunization system highlights

- There is no comprehensive multi-year plan (MYP) for immunization.
- A standing national technical advisory group on immunization (NITAG) with formal written terms of reference exists. The group met 2 times in 2020.
- No information is available on spending on routine immunization financed using government funds.
- No information is available on spending on vaccine purchase financed using government funds.
- A national nominal electronic immunization registry implementation is in progress.

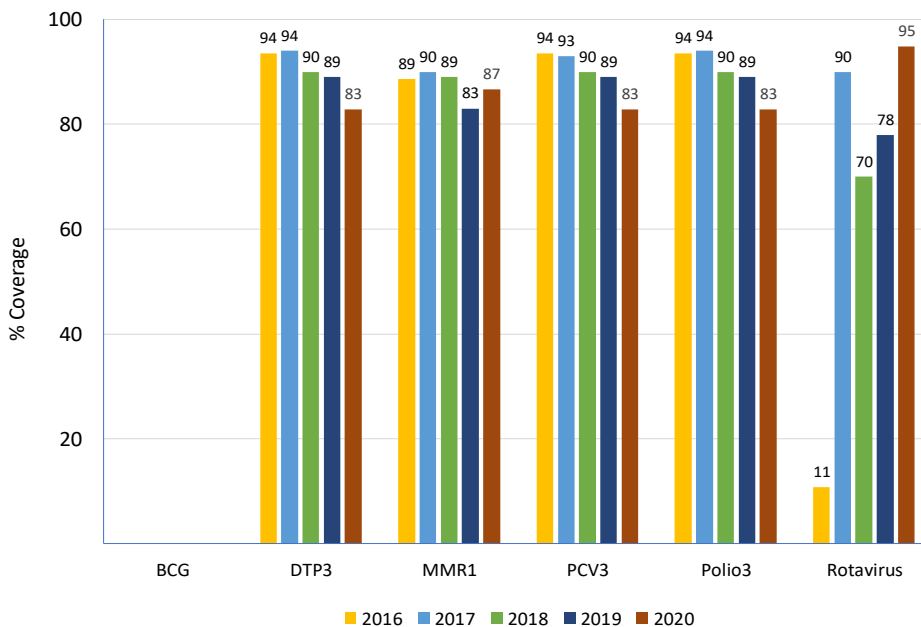
Vaccine Introduction

	Year
Bacterial Meningitis	
<i>Haemophilus influenzae</i> type b	1998
Hepatitis B	2001
HPV	2015
Influenza	2005
MMR1	1991
MMR2	2001
Pentavalent	2001
Pneumococcal Conjugate	2012
Rotavirus	2014
Tdap	
Tetavalent DPT-Hib or DPT-HepB	
Yellow Fever	

Immunization Schedule

BHS	Doses					
	1	2	3	4	5	6
BCG						
HepB pediatric	1st contact	+M1	+M5			
DTP-Hib				M15		
DTP-Hib-HepB	M2	M4	M6			
DTP-Hib-IPV						
DTP-Hib-HepB-IPV	M2	M4	M6			
DTP					Y4-Y5	
Influenza pediatric						
IPV	M2	M4				
OPV			M6	Y4-Y5		
MMR	M12	M15				
Pneumoco conjugate	M2	M4	M6	M15		
Rotavirus	M2	M4				
Td						
Tdap						Y12
HPV	Y9-Y10	+M1-M2	+M6			

Vaccination Coverage



Surveillance indicators

Acute flaccid paralysis (AFP) - (CARPHA) 2020

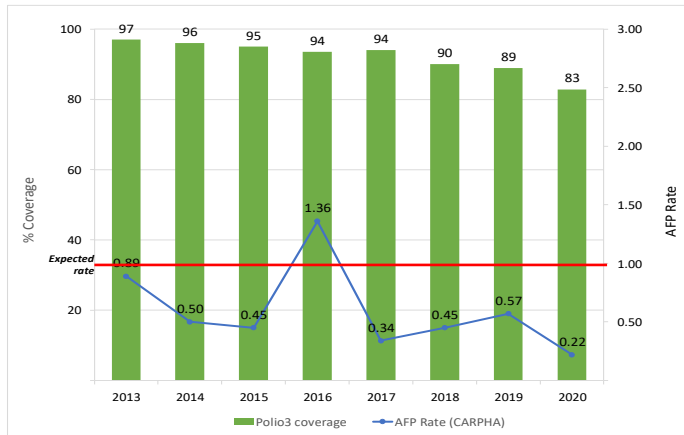
Number of AFP suspected cases	4
AFP rate per 100,000 population <15 years old	0.22
% of cases with 1 adequate samples	25
% of cases investigated within <48 hours	50
% sites reporting	72

Measles-rubella (MR) - (CARPHA) 2020

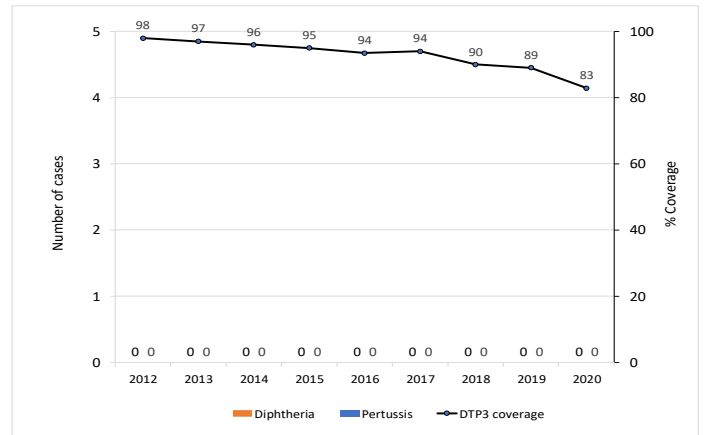
Number of MR suspected cases	55
% of cases with adequate investigation	60
% of cases with adequate blood samples	96
% of samples received in laboratory <=5 days	22
% of laboratory samples results <=4 days	76



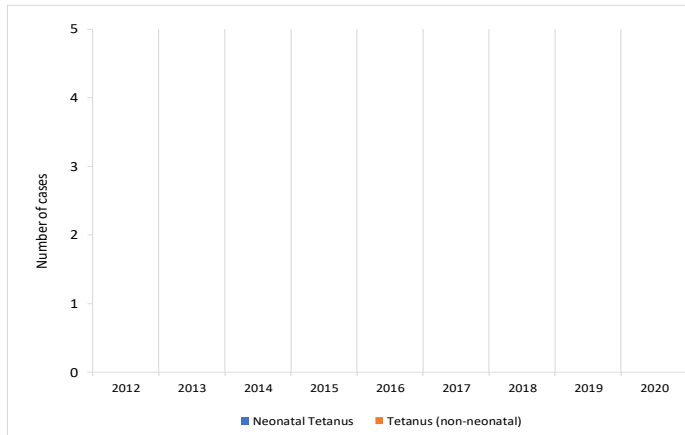
Polio3 coverage and AFP rate per 100,000 children <15 years of age



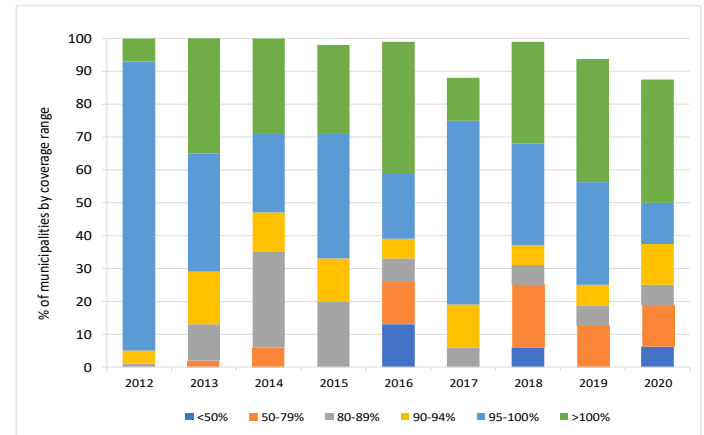
DTP3 coverage and number of reported diphtheria and pertussis cases



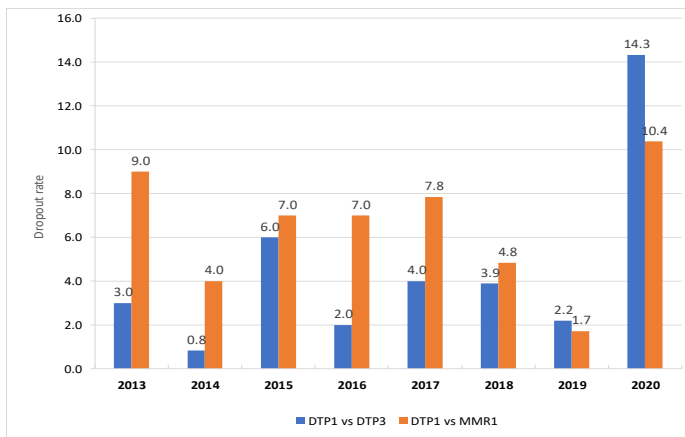
Number of tetanus (no neonatal) and neonatal tetanus cases



Proportion of municipalities by coverage range with DTP3 in children <1 years of age



DTP1-DTP3 and DTP1-MMR1 Dropout Rate



Legend

- NB/nb-newborn
- M/m -month
- Y/y-year
- WCBA-women of childbearing age
- with stockout
- no stockout
- no data available

Vaccine Stockout

BHS	2013	2014	2015	2016	2017	2018	2019	2020
AD syringes	●	●	●	●	●	●	●	●
BCG	●	●	●	●	●	●	●	●
Disposable syringes	●	●	●	●	●	●	●	●
DTP	●	●	●	●	●	●	●	●
HepB	●	●	●	●	●	●	●	●
Hib	●	●	●	●	●	●	●	●
Influenza	●	●	●	●	●	●	●	●
IPV	●	●	●	●	●	●	●	●
Measles	●	●	●	●	●	●	●	●
Pneumo. conjugate	●	●	●	●	●	●	●	●
Polio	●	●	●	●	●	●	●	●
Reconst. syringes	●	●	●	●	●	●	●	●
Rotavirus	●	●	●	●	●	●	●	●
Safety boxes	●	●	●	●	●	●	●	●
Tdap	●	●	●	●	●	●	●	●
TT	●	●	●	●	●	●	●	●
Yellow fever	●	●	●	●	●	●	●	●