



### Demographics and socioeconomic

Total Population (in 1000) (2020)	45,195.78
Population <1 year of age (in 1000) (2020)	740.64
Population 1 year of age (in 1000) (2020)	745.91
Population <5 years of age (in 1000) (2020)	3,736.65
Women of childbearing age (in 1000) (2020)	33,749.92
Infant Mortality Rate (per 1000 live births) (2017)	9.3
Gross national income (US\$ per capita) current value (2020)	8,930.0
National Health Expenditure Public (2018)	5.9
National Health Expenditure Private (2018)	3.7

### Immunization system highlights

- There is no comprehensive multi-year plan (MYP) for immunization.
- A standing national technical advisory group on immunization (NITAG) with formal written terms of reference exists. The group met 5 times in 2020.
- No information is available on spending on routine immunization financed using government funds.
- No information is available on spending on vaccine purchase financed using government funds.
- A national nominal electronic immunization registry is in place.

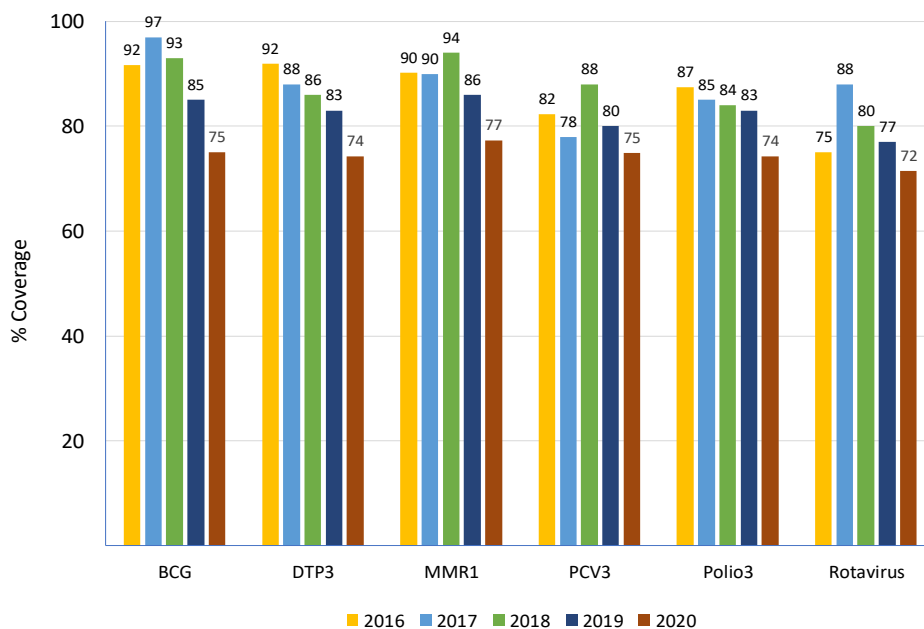
### Vaccine Introduction

	Year
Bacterial Meningitis	
<i>Haemophilus influenzae</i> type b	1997
Hepatitis B	2000
HPV	2011
Influenza	1993
MMR1	1997
MMR2	1998
Pentavalent	2009
Pneumococcal Conjugate	2012
Rotavirus	2015
Tdap	2009
Tetavalent DPT-Hib or DPT-HepB	1997
Yellow Fever	2002

### Immunization Schedule

ARG	Doses					
	1	2	3	4	5	6
BCG	B					
HepB pediatric	B					
DTP-Hib						
DTP-Hib-HepB	M2	M4	M6	M15-M18		
DTP-Hib-IPV						
DTP-Hib-HepB-IPV	M2	M4	M6			
DTP					Y6	
Influenza pediatric						
IPV	M2	M4	M6		Y6	
OPV						
MMR	Y1	Y6				
Pneumoco conjugate	M2	M4	M12			
Rotavirus	M2	M4				
Td						
Tdap						
HPV						

### Vaccination Coverage



### Surveillance indicators

#### Acute flaccid paralysis (AFP) 2020

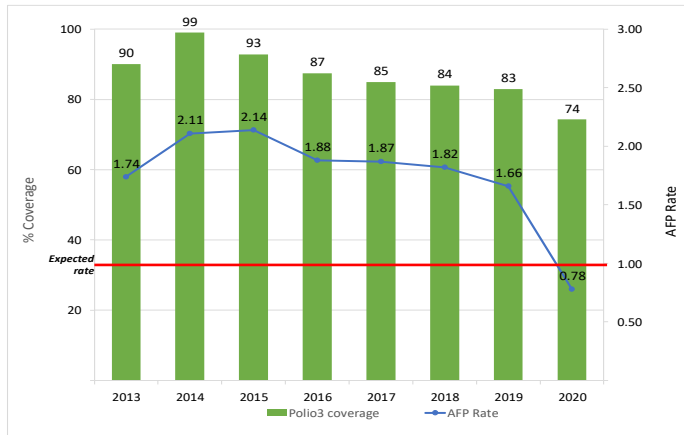
Number of AFP suspected cases	86
AFP rate per 100,000 population <15 years old	0.78
% of cases with 1 adequate samples	74
% of cases investigated within <48 hours	34
% sites reporting	0

#### Measles-rubella (MR) 2020

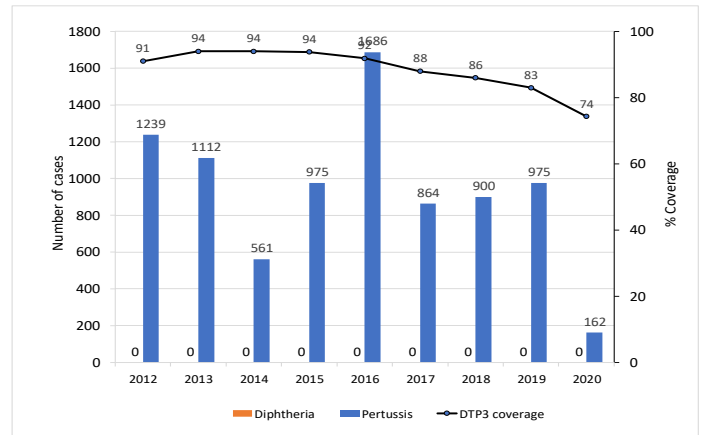
Number of MR suspected cases	1,825
% of cases with adequate investigation	19
% of cases with adequate blood samples	90
% of samples received in laboratory <=5 days	83
% of laboratory samples results <=4 days	56



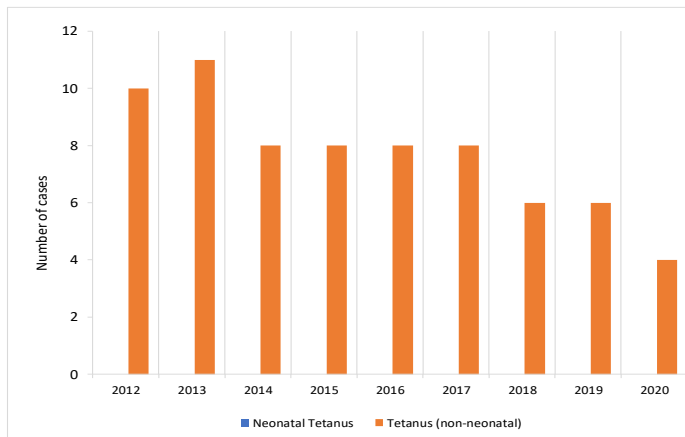
### Polio3 coverage and AFP rate per 100,000 children <15 years of age



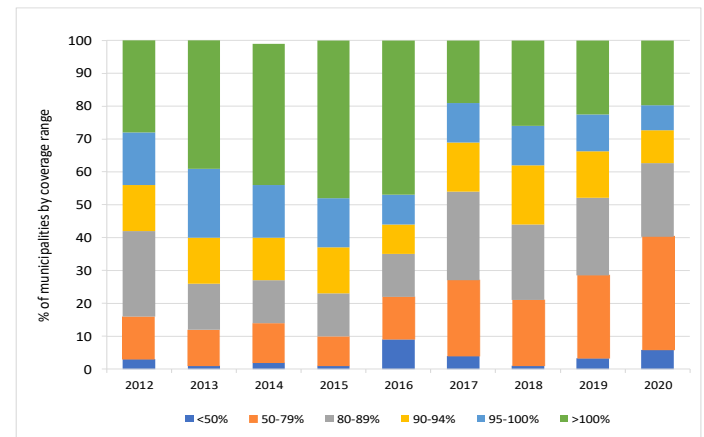
### DTP3 coverage and number of reported diphtheria and pertussis cases



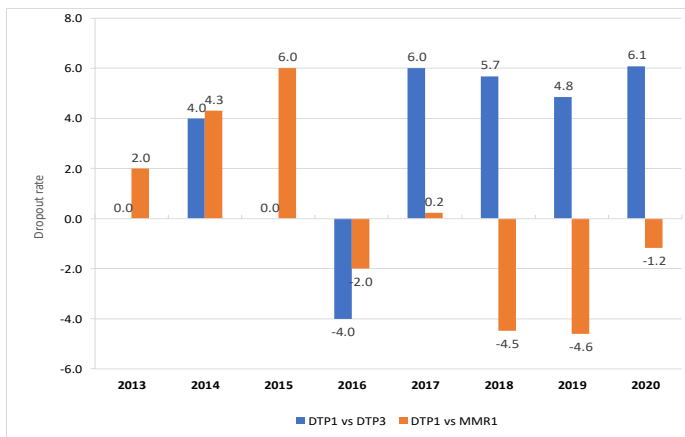
### Number of tetanus (no neonatal) and neonatal tetanus cases



### Proportion of municipalities by coverage range with DTP3 in children <1 years of age



### DTP1-DTP3 and DTP1-MMR1 Dropout Rate



**Legend**

- NB/nb-newborn
- M/m-month
- Y/y-year
- WCBA-women of childbearing age
- with stockout
- no stockout
- no data available

### Vaccine Stockout

ARG	2013	2014	2015	2016	2017	2018	2019	2020
AD syringes			●		●	●	●	●
BCG		●	●		●	●	●	●
Disposable syringes	●	●	●		●	●	●	●
DTP	●	●	●		●	●	●	●
HepB	●	●	●		●	●	●	●
Hib	●	●	●		●	●	●	●
Influenza	●	●	●		●	●	●	●
IPV		●	●		●	●	●	●
Measles	●	●	●		●	●	●	●
Pneumo. conjugate	●	●	●		●	●	●	●
Polio	●	●	●		●	●	●	●
Reconst. syringes	●	●	●		●	●	●	●
Rotavirus		●	●		●	●	●	●
Safety boxes	●	●	●		●	●	●	●
Tdap		●	●		●	●	●	●
TT	●	●	●		●	●	●	●
Yellow fever	●	●	●		●	●	●	●