

VACCINATE YOUR CHILDREN AGAINST MEASLES

VACCINES SAVE LIVES

MEASLES CAN CAUSE:

- PNEUMONIA
- PERMANENT BRAIN DAMAGE
- DEAFNESS
- PREMATURE BIRTH
- BABIES WITH LOW BIRTHWEIGHT
- DEATH

MEASLES SYMPTOMS

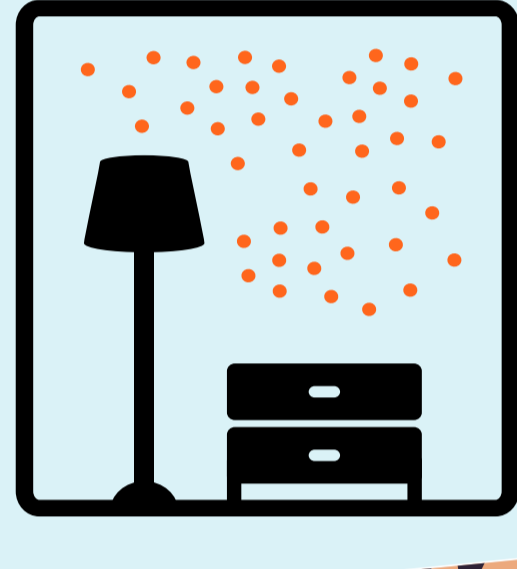
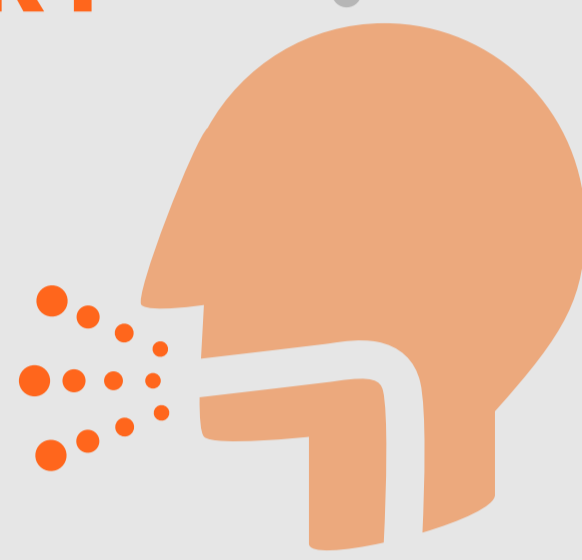


- HIGH FEVER
- RUNNY NOSE
- COUGH
- RED EYES
- RASH OR SPOTS ON SKIN

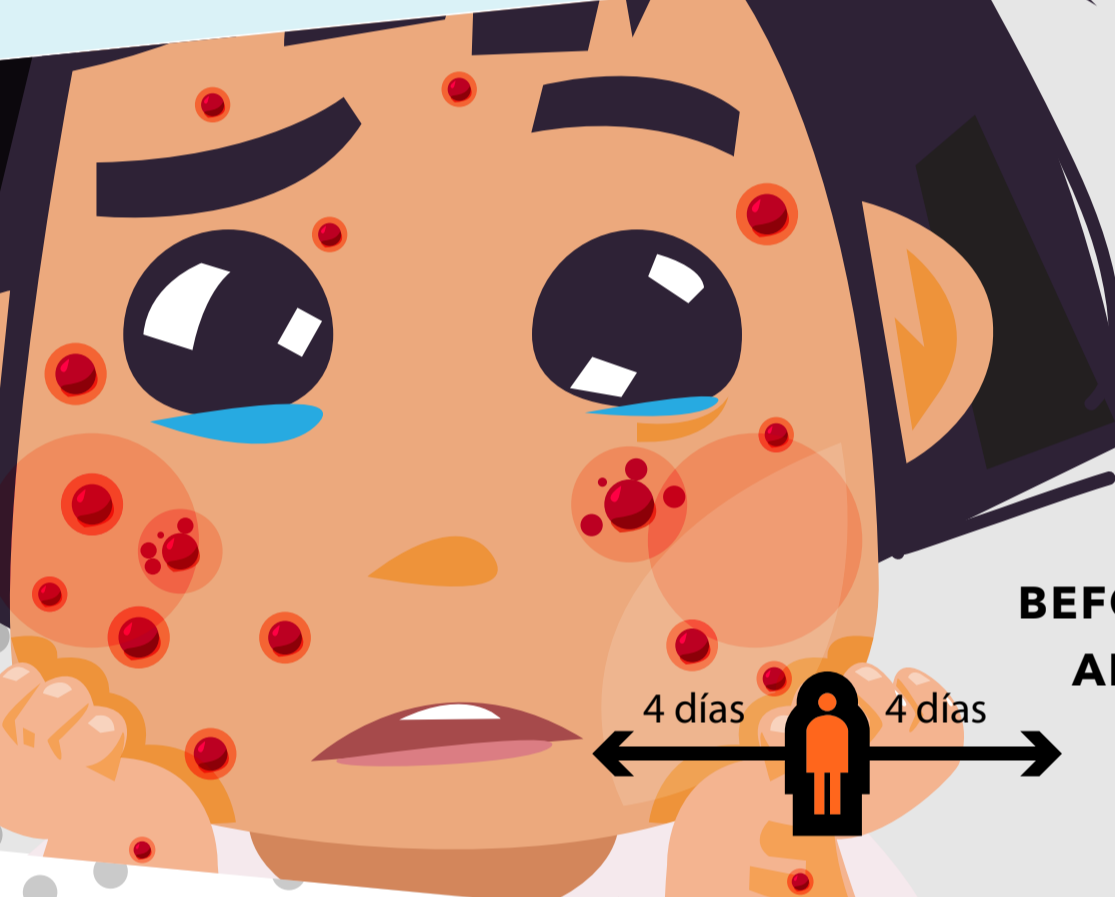
Symptoms usually appear 7-14 days after being infected

MEASLES IS VERY CONTAGIOUS

IT'S SPREAD WHEN AN INFECTED PERSON BREATHES, COUGHS, OR SNEEZES



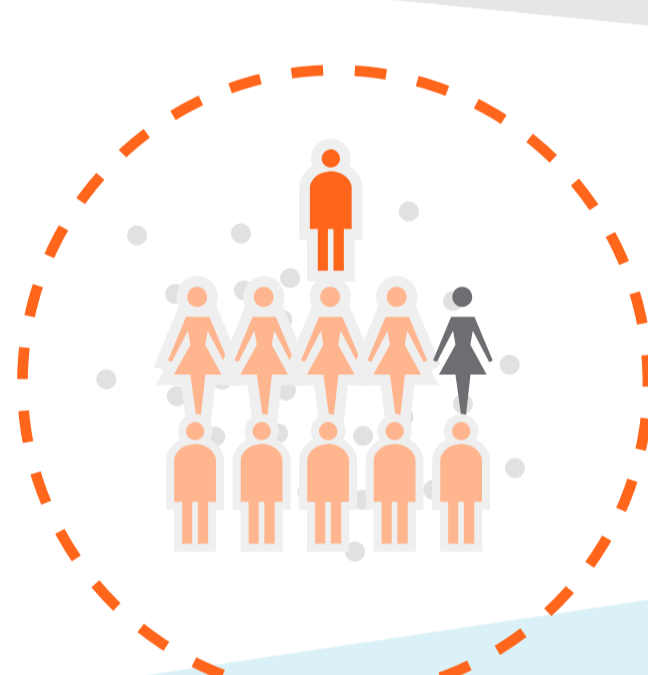
THE VIRUS STAYS IN THE AIR AND ON SURFACES FOR 2 HOURS.



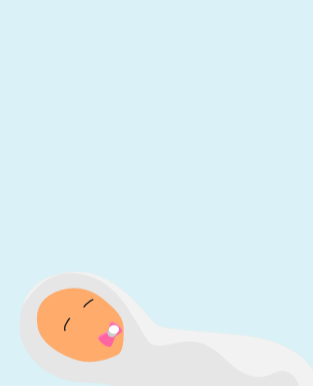
A PERSON INFECTED WITH MEASLES CAN SPREAD IT FROM 4 DAYS BEFORE TO 4 DAYS AFTER THE RASH APPEARS.

4 días ← 4 días

NINE OUT OF TEN PEOPLE WHO HAVEN'T BEEN VACCINATED CAN GET INFECTED WITH AND SHOW SYMPTOMS OF MEASLES



WHEN SHOULD CHILDREN BE VACCINATED?



1ST DOSE
(12-15 months)



2ND DOSE
(18 months*)

During outbreaks and catch-up campaigns, other age groups might be vaccinated as well.

THE ONLY WAY TO PREVENT MEASLES IS WITH VACCINATION. THE VACCINE IS SAFE AND EFFECTIVE.

*Or 4-6 years according to the national scheme

GET VACCINATED BEFORE TRAVELING



MEASLES STILL CIRCULATES IN MANY PARTS OF THE WORLD

Travelers, children and adults who don't know if they've been vaccinated should receive one dose of the vaccine at least 2 weeks before traveling.

IF YOU HAVE MEASLES



- stay home or in your hotel room if you're traveling
- talk to a health professional
- avoid public places

PROTECT YOURSELF AND YOUR LOVED ONES. PREVENT MEASLES.

#GETVAX BECAUSE

#VACCINESWORK