

FACT: LEAD IS TOXIC

It is harmful to everyone and

DAMAGES:



BRAIN



KIDNEYS



LIVER



BLOOD



REPRODUCTIVE SYSTEM

Young children

are most vulnerable. Their nervous systems are still developing and they absorb **4-5 times more than adults**, which can cause:

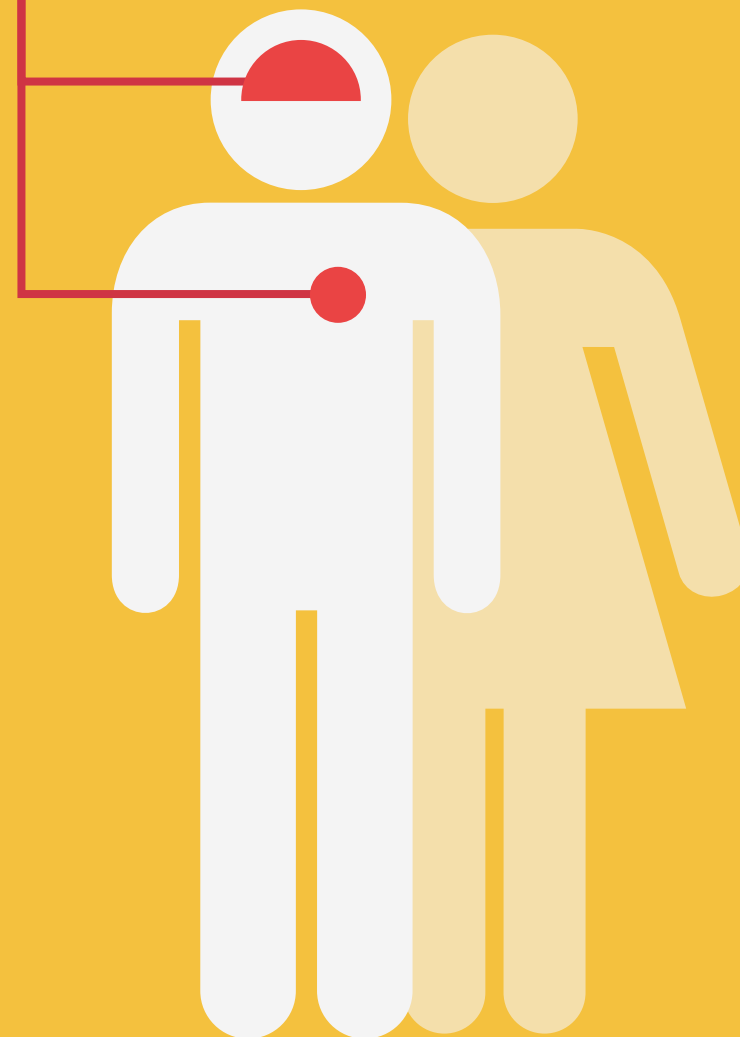
- intellectual disability
- underperforming at school
- behavioural issues



In adults

lead exposure increases the risk of:

- ischaemic heart disease
- stroke



In pregnant women

lead exposure damages many organs but also affects:

- the developing foetus



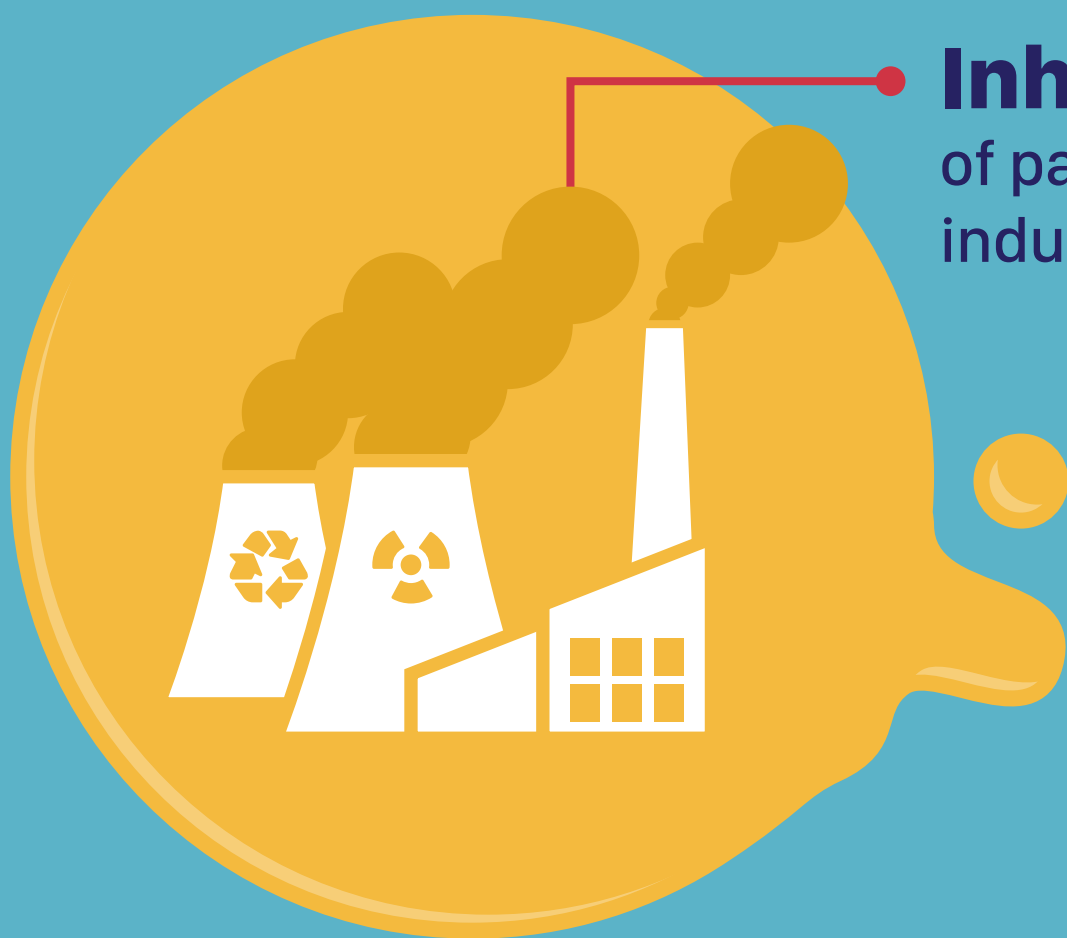
There is no safe level of lead exposure



World Health Organization

LEAD EXPOSURE CAN OCCUR THROUGH...

#BanLeadPaint



Inhalation

of particles released by industry or recycling



Ingestion

of contaminated soil or dust from decaying lead paint – particularly when children play on the ground and put toys or fingers in their mouths

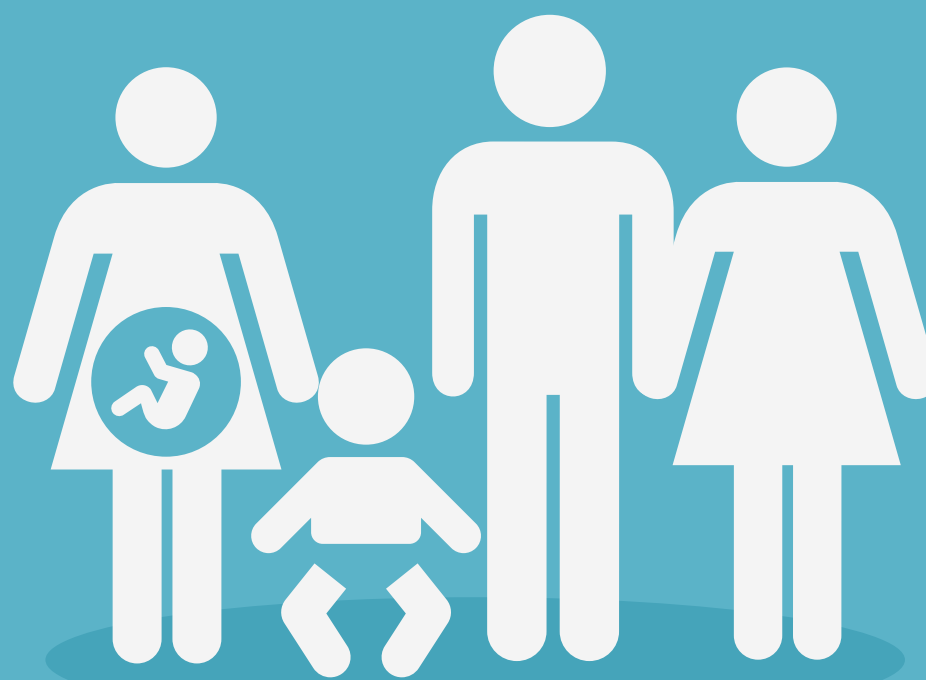
Lead-containing products

such as lead-glazed ceramics and some traditional medicines or cosmetics



Food or water

contaminated with lead



There is no safe level of lead exposure



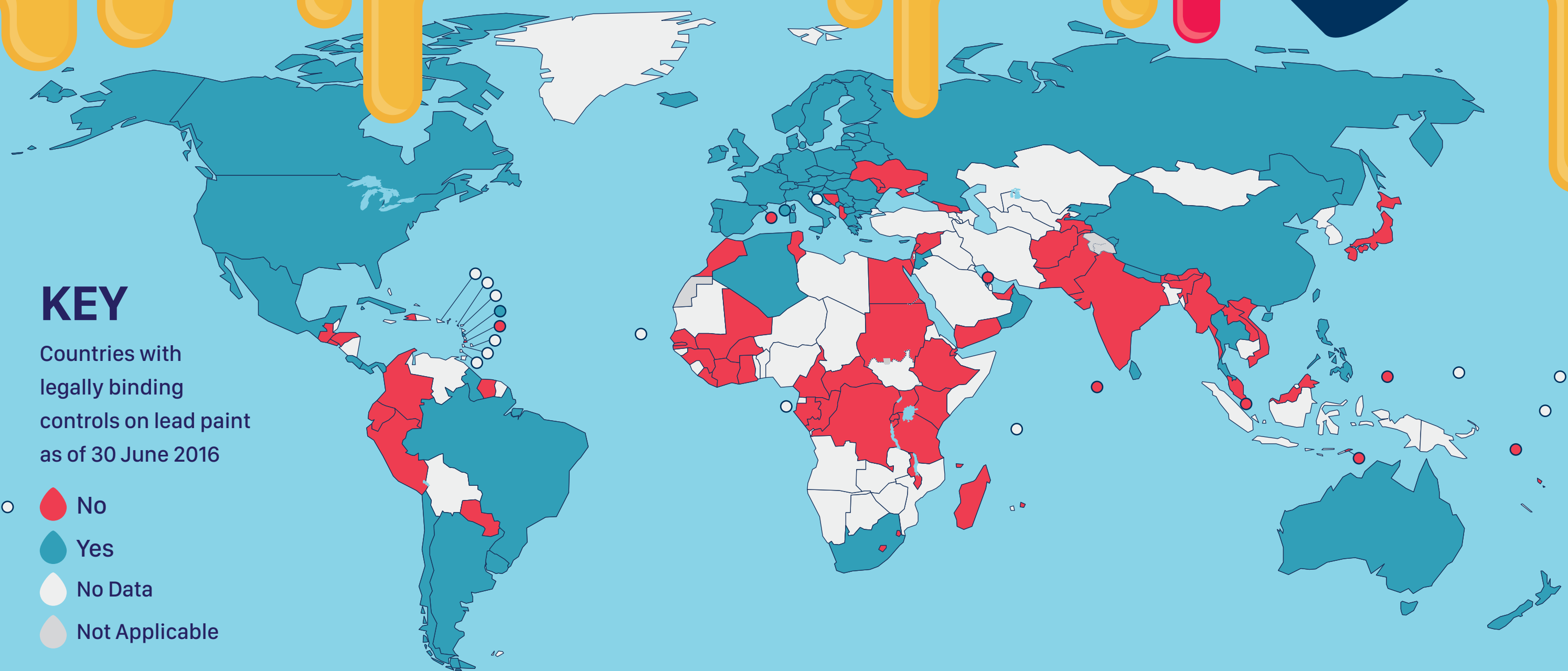
World Health Organization

LEAD PAINT MUST GO

#BanLeadPaint

The Global Alliance to Eliminate Lead Paint says that all countries should ban lead paint by **2020**

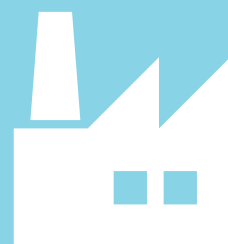
FACT: As of June 2016, only 1/3 of countries have legally binding controls on lead paint



THAT'S WHY



GOVERNMENTS



INDUSTRY



CONSUMERS

Must work together to ensure all paint is free from added lead by **2020**

The boundaries and names shown and the designations used on this map do not imply the expression of any opinion whatsoever on the part of the World Health Organization concerning the legal status of any country, territory, city or area or of its authorities, or concerning the delimitation of its frontiers or boundaries. Dotted and dashed lines on maps represent approximate border lines for which there may not yet be full agreement.

There is no safe level of lead exposure



World Health Organization