



Pan American
Health
Organization



REGIONAL OFFICE FOR THE

World Health
Organization
Americas

Epi info™ user's guide

PAHO/WHO Rapid assessment tool for monitoring laboratory capacity for antimicrobial resistance surveillance

English version 1.0

Epi Info™ User's Guide

PAHO/WHO Rapid assessment tool for monitoring laboratory capacity for antimicrobial resistance surveillance

December 2017



Acknowledgements

This user's guide is prepared by the Antimicrobial Resistance (AMR) team of the Pan American Health Organization / World Health Organization (PAHO/WHO).

The development of this manual was technically coordinated by Marcelo Galas and elaborated by Jenny Hsieh, with inputs from Hatim Sati and Nienke Bruinsma (PAHO / WHO) under the general supervision of Pilar Ramón-Pardo (Advisor, Resistance to Antimicrobials) and Marcos Espinal (Director, Communicable Diseases and Health Analysis).

Financial support for this document comes from the Federal Ministry of Health of Germany.

Last revision: 1 December 2017

Table of Contents

Introduction	4
Installing Epi-Info™ software and the assessment tool	4
Installing Epi-Info™	4
Installing the rapid assessment tool files	4
Data entry guide	5
Opening the data entry form	5
Entering data	7
Saving data and entering a new record	9
Finding or editing records	9
Exporting data to MS Excel®	10
Data dictionary	13

Introduction

Strengthening laboratory capacity to accurately identify pathogens and their antimicrobial susceptibility is important to build strong antimicrobial resistance (AMR) surveillance systems for containing and controlling antimicrobial resistance. This rapid assessment tool help monitor and evaluate bacteriology laboratory capacity in the Americas. It can be printed and used as a paper-based tool or used electronically by an Epi-Info™-based software program developed to facilitate data entry, storage and analysis. This user's guide includes instructions on installing Epi info™ software and the assessment tool, step-by-step data entry tutorial, data extraction tutorial and a data dictionary to refer to when performing data analysis.

Installing Epi-Info™ software and the assessment tool

In order to use this assessment tool, you will need the following:

1. Epi Info™ 7 software
2. LabMonitorToolv1.mdb
3. LabMonitorToolv1.prj

Installing Epi-Info™

Epi Info™ is a windows-based free software package developed by the US Centers for Disease Control and Prevention (CDC). This assessment tool is designed to operate with **Epi Info™ 7** which can be downloaded from: <https://www.cdc.gov/epiinfo/support/downloads.html>.

Please download the installation file for the latest version of Epi Info™ 7, open the file and follow screen instructions to complete the installation. For detailed instructions on how to install the software and other tutorial resources, please refer to CDC website: <https://www.cdc.gov/epiinfo/index.html>. There is also an online instructional video that is available from: <https://www.youtube.com/watch?v=FYrWiLGO7ZE>.

Installing the rapid assessment tool files

After completing the installation of Epi Info 7™, please download the **LabMonitorTool** files. It is a zip file, please unzip before opening it.

Data entry guide

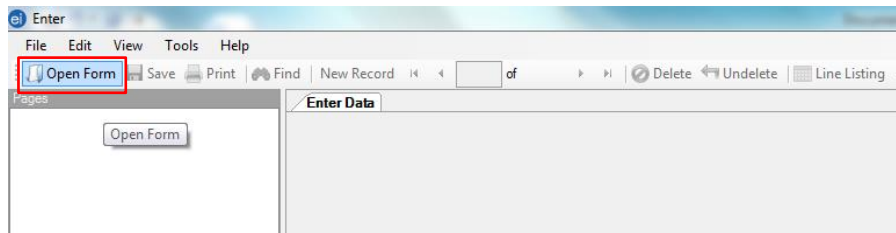
Opening the data entry form



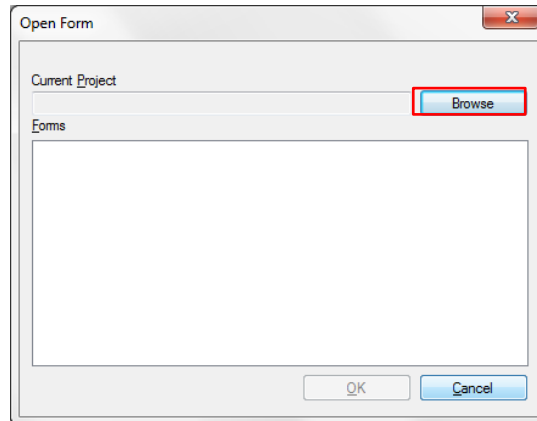
1. To launch Epi Info™ 7, click the  icon on your computer desktop or find the program from the start pop-up menu.
2. Click the **Enter Data** button. The Enter Data window will open.



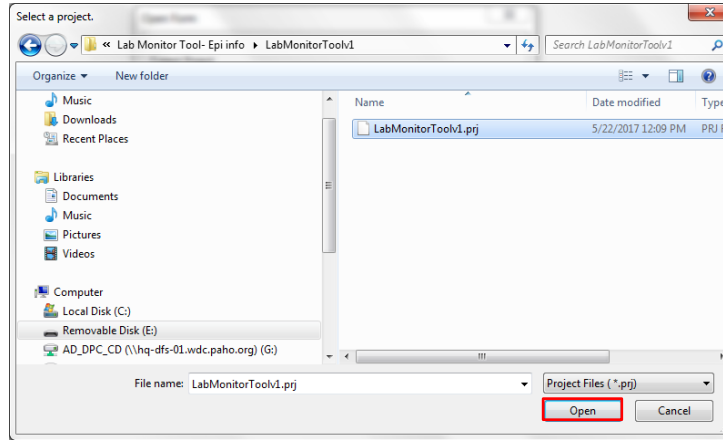
3. Open the data entry form by clicking the **Open Form** button on top right corner or by selecting **File->Open Form**.



4. Click the **Browse** button to browse for an Epi Info™ 7 project.



- From the site that you save the tool file, locate the **LabMonitorTool_Eng\LabMonitorToolv1.prj** project directory. Select the **LabMonitorToolv. prj** and click **Open** to open it.



Entering data

1. There are five types of variable format in this tool: Numeric, text, data, binomial, and yes/no options. For detailed descriptions of each variable, please refer to the data dictionary in this document. Please be advised that any space that is left blank or unselected will be considered and shown as **“missing data”** when extracting the database, therefore please make sure you enter all the information before data extraction. However, this does not apply to **methods checkbox** in the **analytical phase** which will be explained later in this document.
2. As an example, text boxes (e.g. Name of the institution) allows you to enter a single line of text. A drop-down list (e.g. countries) allows you to select an item from a list. The date box allows you to select a date from a pop-up calendar. Numeric boxes (e.g. N of beds) allows you to enter a number. Observation boxes allows you to enter multiline text.

Enter - [LabMonitorToolV1FormEng]

File Edit View Tools Help

Open Form Save Print Find New Record of 0 Delete Undo Line Listing Dashboard Map Edit Form Help

Pages

- FormEng
- Page 1
- Page 2
- Page 3
- Page 4
- Page 5
- Page 6
- Page 7
- Page 8
- Page 9
- Page 10
- Page 11
- Page 12
- Page 13
- Page 14
- Page 15

Page 1

Pan American Health Organization World Health Organization
REGIONAL OFFICE OF THE AMERICAS

PAHO/CHA/AMR/001/17

RAPID ASSESSMENT TOOL FOR MONITORING LABORATORY CAPACITY TO DETECT ANTIMICROBIAL RESISTANCE

Name of the institution Country Name of the lab manager Date

XXX Hospital Anguilla

--- Characteristics of the Institution ---

Nº of beds Nº of auxiliary staff

200

Observations

It is a public hospital.
There are two students working at the lab.

3. For yes/no questions, option boxes allow you to select “Yes” or “No”.

Page 14
Page 15

Linked Records

Exposed From Exposed To

Unlink Add Exposure

View SNA Graph

--- Pre-Analytical Phase ---

Adequate infrastructure (physical space / lighting / separation of activities)

Yes No

Sampling manual

Yes No

Criteria for rejection of samples

Yes No

Observations

Very good infrastructure.

The sampling manual is in preparation.

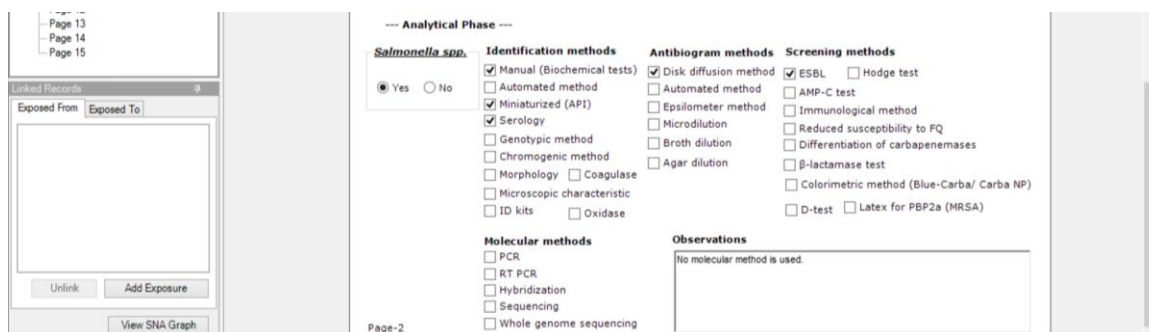
Page-1

[Name CriteriaRejectOBS] [Type Multiline] 38.8752470.77.1057480.10.02.32 下午 en-US 7.2.1.0 CAPS NUM

- After entering data on the first page, click **Page options** on the right to enter data on different page.



- For analytical phase, a list of methods is presented for you to select. Each method is considered as binomial variable (true or false). Please note that if any of the method is not selected, it is considered as **“False”**, in other words, this method is not performed by the laboratory. It is not considered as **“Blank”** or **“Missing data”**, therefore please make sure to check whether each method is used by the laboratory during the assessment.




Saving data and entering a new record

1. Epi info automatically saves data as you move from page-to-page. You can also save data manually by clicking **Save** or **File->Save** after finishing entering a record.
2. To enter a new record, click **New Record** from the toolbar to open a new record.



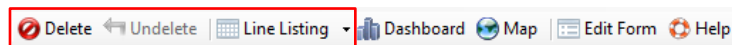
The screenshot shows the Epi-Info LabMonitorTool/FormEng interface. The window title is "Enter - [LabMonitorTool/FormEng]". The menu bar includes File, Edit, View, Tools, and Help. The toolbar contains buttons for Open Form, Save, Print, Find, New Record, 1 of 2, Delete, Undelete, Line Listing, Dashboard, Map, Edit Form, and Help. The "New Record" button is highlighted with a red box. The main area displays a form titled "GUIDELINE FOR FAST AND QUALITY MONITORING OF ANTIMICROBIAL RESISTANCE SURVEILLANCE" with logos for the Pan American Health Organization and World Health Organization. The form includes fields for Name of the institution (St. John's Medical Center), Country (Antigua and Barbuda), Name of the laboratory manager (Barbara Joseph), and Date (4/18/2017). It also has sections for Characteristics of the Institution (Nº of beds: 185, Nº of professional staff: 1, Nº of technical staff, Nº of auxiliary staff: 2) and Observations.

Finding or editing records

1. Enter a record number to find a specific record or click  to navigate to different records.



2. Please remember to manually save the record after editing, Epi-Info™ may not automatically save the edited records.
3. Click **Line Listing** to see all data that has been entered. Click **Delete** if you want to delete a record.

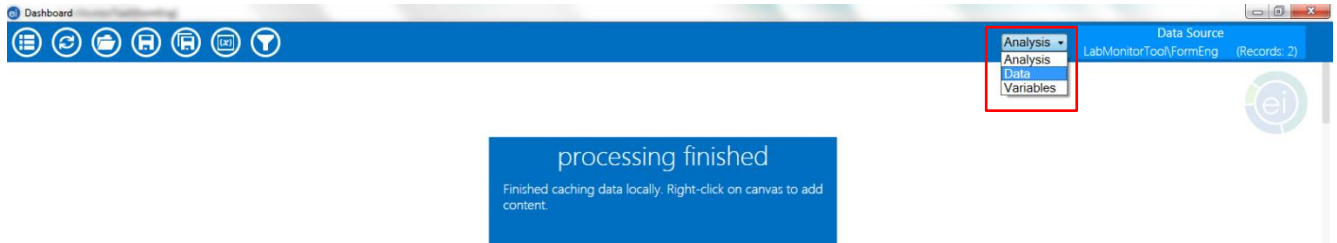


Exporting data to MS Excel®

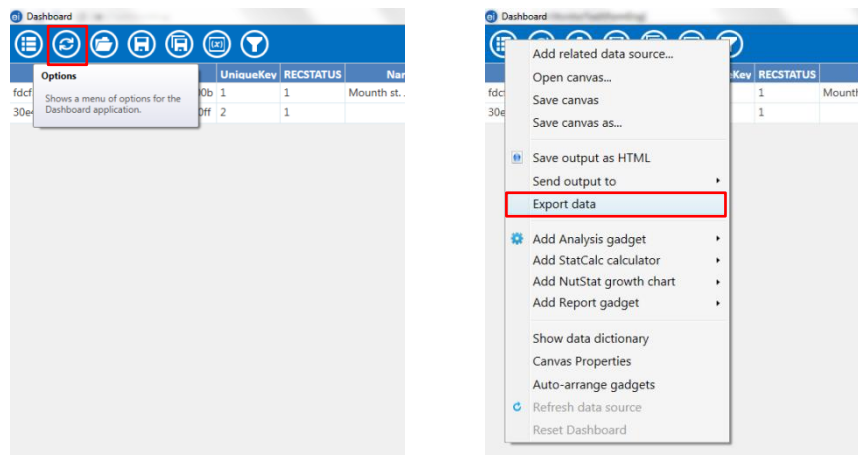
1. Click **Dashboard**



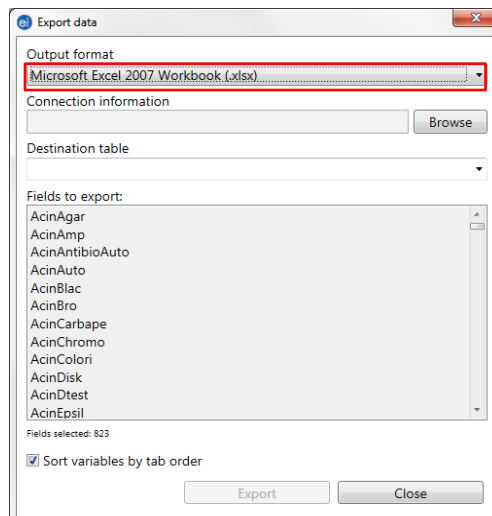
2. Select **Data** on the top right corner to see all the records entered



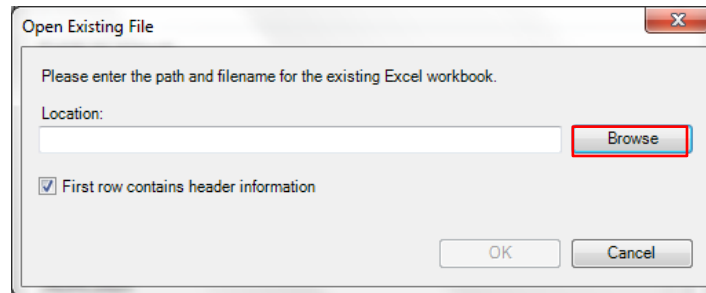
3. To export the file, click **Option -> Export data**



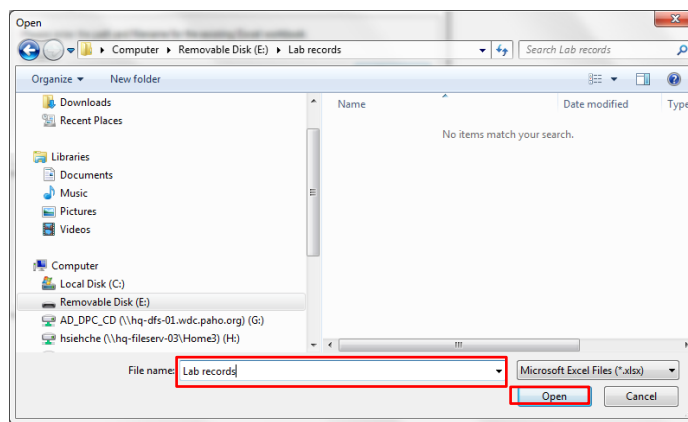
4. Select the desired **Output format** (e.g. Microsoft Excel® 2007 workbook .xlsx)



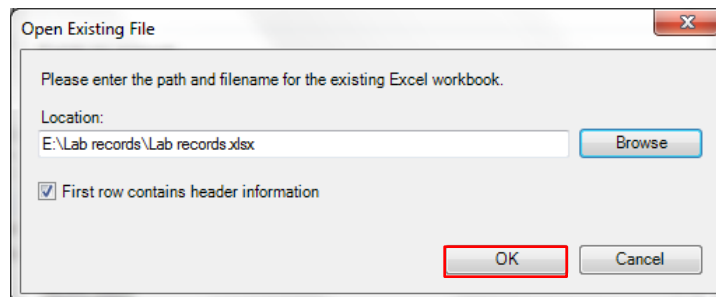
5. The **Connection information** is where you would like to save your excel file. Click **Browse** to select the location from your device.



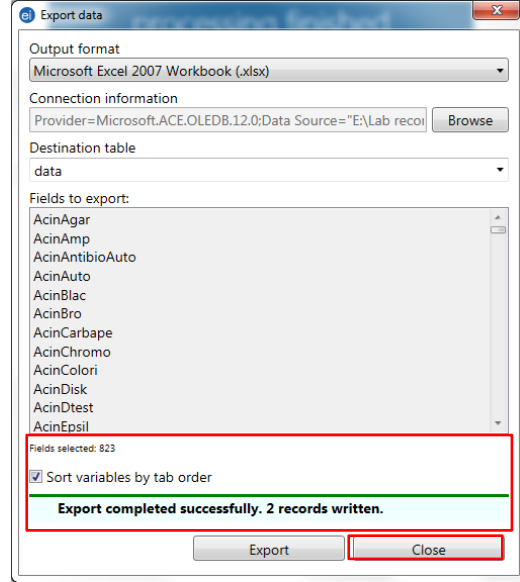
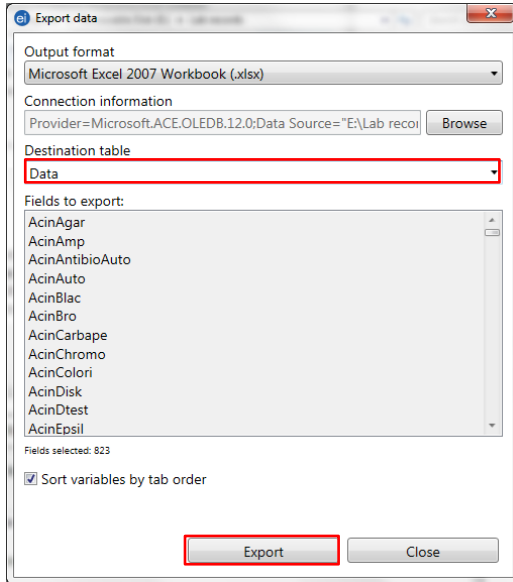
6. Name the file name and click **Open**



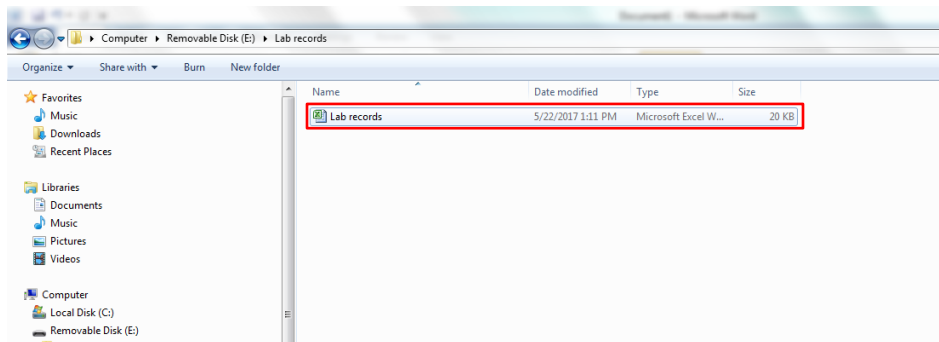
7. Click **Ok** when finishing selecting



8. The **Destination table** is the name of the excel sheet you are going to export
9. Select the variable you would like to export or click **Export** to export the all variables from epi info to your device. Export completed! Click **Close**.



10. You can now find the exported excel file at the location you chose to save!



Data dictionary

Page Nº	Variable Name	Variable Descriptions	Variable Type
Page 1	NameInstitution	Name of the institution	single-line text
Page 1	Country	Country	Drop-down list: Text
Page 1	NameLabManager	Name of the lab manager	single-line text
Page 1	DateSurvey	Date	Date (YYYY-MM-DD)
Page 1	NumBeds	Nº of beds	Number
Page 1	NumProStaff	Nº of professional staff	Number
Page 1	NumTechStaff	Nº of technical staff	Number
Page 1	NoAuxStaff	Nº of auxiliary staff	Number
Page 1	CharaInsOBS	Observations for institution characteristics	Multiline text
Page 1	UrineN	Urine: total Nº	Number
Page 1	UrineNPos	Urine: Nº of positives	Number
Page 1	UrineNSen	Urine: Nº with sensitivity test	Number
Page 1	UrineTAT	Urine: turnaround time	Number
Page 1	RespirN	Respiratory secretions: total Nº	Number
Page 1	RespirNPos	Respiratory secretions: Nº of positives	Number
Page 1	RespirNSen	Respiratory secretions: Nº with sensitivity test	Number
Page 1	RespirTAT	Respiratory secretions: turnaround time	Number
Page 1	OtherSecreN	Other secretions/exudates: total Nº	Number
Page 1	OtherSecreNPos	Other secretions/exudates: Nº of positives	Number
Page 1	OtherSecreNSen	Other secretions/exudates: Nº with sensitivity test	Number
Page 1	OtherSecreTAT	Other secretions/exudates: turnaround time	Number
Page 1	LiquidN	Fluid: total Nº	Number
Page 1	LiquidNPos	Fluid: Nº of positives	Number
Page 1	LiquidNSen	Fluid: Nº with sensitivity test	Number
Page 1	LiquidTAT	Fluid: turnaround time	Number
Page 1	BloodN	Blood: total Nº	Number
Page 1	BloodNPos	Blood: Nº of positives	Number
Page 1	BloodNSen	Blood: Nº with sensitivity test	Number
Page 1	BloodTAT	Blood: turnaround time	Number
Page 1	StoolN	Stool: total Nº	Number
Page 1	StoolNPos	Stool: Nº of positives	Number
Page 1	StoolNSen	Stool: Nº with sensitivity test	Number
Page 1	StoolTAT	Stool: turnaround time	Number
Page 1	AMPObs	Observations for average monthly production	Multiline text
Page 1	AdqInfraYN	Adequate infrastructure (physical space / lighting / separation of activities)	Option: Number (0=Yes, 1= No)
Page 1	AdqInfraOBS	Observations: Adequate infrastructure	Multiline text
Page 1	SamManualYN	Sampling manual	Option: Number (0=Yes, 1= No)
Page 1	SamManualOBS	Observations: Sampling manual	Multiline text
Page 1	CriteriaRejectYN	Criteria for rejection of samples	Option: Number (0=Yes, 1= No)
Page 1	CriteriaRejectOBS	Observations: Criteria for rejection of samples	Multiline text
Page 2	ProManualIdYN	a. for identification	Option: Number (0=Yes, 1= No)
Page 2	ProManualIdOBS	Observations: a. for identification	Multiline text
Page 2	ProManualSusYN	b. for susceptibility test	Option: Number (0=Yes, 1= No)
Page 2	ProManualSusOBS	Observations: b. for susceptibility test	Multiline text
Page 2	ProManualLiAntiYN	c. includes list of antibiotics/pathogen	Option: Number (0=Yes, 1= No)
Page 2	ProManualLiAntiOBS	Observations: c. includes list of antibiotics/pathogen	Multiline text
Page 2	BiostanYN	Biosafety standards	Option: Number (0=Yes, 1= No)
Page 2	BiostanOBS	Observations: Biosafety standards	Multiline text
Page 2	StaTrainingYN	Staff training	Option: Number (0=Yes, 1= No)
Page 2	StaTrainingOBS	Observations: Staff training	Multiline text
Page 2	GuideSamTranYN	Guidelines for sample transport	Option: Number (0=Yes, 1= No)

Page 2	GuideSamTranOBS	Observations: Guidelines for sample transport	Multiline text
Page 2	AvailPPSupYN	Availability of personal protection supplies	Option: Number (0=Yes, 1= No)
Page 2	AvailPPSupOBS	Observations: Availability of personal protection supplies	Multiline text
Page 2	FireContinPlanYN	Fire contingency plan	Option: Number (0=Yes, 1= No)
Page 2	FireExtingYN	Fire extinguisher	Option: Number (0=Yes, 1= No)
Page 2	FireExtingOBS	Observations: Fire contingency plan/ extinguisher	Multiline text
Page 2	ConBiospillYN	Control of biological spills	Option: Number (0=Yes, 1= No)
Page 2	ConBiospillOBS	Observations: Control of biological spills	Multiline text
Page 2	MealInjurYN	Measures in case of injuries or other accidents	Option: Number (0=Yes, 1= No)
Page 2	MealInjurOBS	Observations: Measures in case of injuries or other accidents	Multiline text
Page 2	SalmonellasppYN	Salmonella spp.	Option: Number (0=Yes, 1= No)
Page 2	SalmonManu	Salmonella spp.: Manual (Biochemical tests)	Boolean (True or False)
Page 2	SalmonDisk	Salmonella spp.: Disk diffusion method	Boolean (True or False)
Page 2	SalmonHodge	Salmonella spp.: Hodge test	Boolean (True or False)
Page 2	SalmonEsbl	Salmonella spp.: ESBL	Boolean (True or False)
Page 2	SalmonAuto	Salmonella spp.: Automated method (identification)	Boolean (True or False)
Page 2	SalmonAntibioAuto	Salmonella spp.: Automated method (antibiogram)	Boolean (True or False)
Page 2	SalmonAmp	Salmonella spp.: AMP-C test	Boolean (True or False)
Page 2	SalmonMini	Salmonella spp.: Miniaturized (API)	Boolean (True or False)
Page 2	SalmonEpsil	Salmonella spp.: Epsilonometer method	Boolean (True or False)
Page 2	SalmonImmuno	Salmonella spp.: Immunological method	Boolean (True or False)
Page 2	SalmonSero	Salmonella spp.: Serology	Boolean (True or False)
Page 2	SalmonMicrodi	Salmonella spp.: Microdilution	Boolean (True or False)
Page 2	SalmonFQ	Salmonella spp.: Reduced susceptibility to FQ	Boolean (True or False)
Page 2	SalmonGeno	Salmonella spp.: Genotypic method	Boolean (True or False)
Page 2	SalmonBro	Salmonella spp.: Broth dilution	Boolean (True or False)
Page 2	SalmonCarbape	Salmonella spp.: Differentiation of carbapenemases	Boolean (True or False)
Page 2	SalmonChromo	Salmonella spp.: Chromogenic method	Boolean (True or False)
Page 2	SalmonAgar	Salmonella spp.: Agar dilution	Boolean (True or False)
Page 2	SalmonBlac	Salmonella spp.: beta-lactamase test	Boolean (True or False)
Page 2	SalmonMorpho	Salmonella spp.: Morphology	Boolean (True or False)
Page 2	SalmonCoagul	Salmonella spp.: Coagulase	Boolean (True or False)
Page 2	SalmonColori	Salmonella spp.: Colorimetric method (Blue-Carba/ Carba NP)	Boolean (True or False)
Page 2	SalmonMicros	Salmonella spp.: Microscopic characteristic	Boolean (True or False)
Page 2	SalmonLatex	Salmonella spp.: Latex for PBP2a (MRSA)	Boolean (True or False)
Page 2	SalmonDtest	Salmonella spp.: D-test	Boolean (True or False)
Page 2	SalmonIDKit	Salmonella spp.: ID kits	Boolean (True or False)
Page 2	SalmonOxidase	Salmonella spp.: Oxidase	Boolean (True or False)
Page 2	SalmonPCR	Salmonella spp.: PCR	Boolean (True or False)
Page 2	SalmonOBS	Observations: Salmonella spp.	Multiline text
Page 2	SalmonRTPCR	Salmonella spp.: RT PCR	Boolean (True or False)
Page 2	SalmonHybri	Salmonella spp.: Hybridization	Boolean (True or False)
Page 2	SalmonSeque	Salmonella spp.: Sequencing	Boolean (True or False)
Page 2	SalmonWhole	Salmonella spp.: Whole genome sequencing	Boolean (True or False)
Page 3	ShigellasppYN	Shigella spp.	Option: Number (0=Yes, 1= No)
Page 3	ShigeHodge	Shigella spp.: Hodge test	Boolean (True or False)
Page 3	ShigeManu	Shigella spp.: Manual (Biochemical tests)	Boolean (True or False)
Page 3	ShigeEsbl	Shigella spp.: ESBL	Boolean (True or False)
Page 3	ShigeDisk	Shigella spp.: Disk diffusion method	Boolean (True or False)
Page 3	ShigeAuto	Shigella spp.: Automated method (identification)	Boolean (True or False)
Page 3	ShigeAntibioAuto	Shigella spp.: Automated method (antibiogram)	Boolean (True or False)
Page 3	ShigeAmp	Shigella spp.: AMP-C test	Boolean (True or False)
Page 3	ShigeMini	Shigella spp.: Miniaturized (API)	Boolean (True or False)
Page 3	ShigeImmuno	Shigella spp.: Immunological method	Boolean (True or False)
Page 3	ShigeEpsil	Shigella spp.: Epsilonometer method	Boolean (True or False)

Page 3	ShigeFQ	Shigella spp.: Reduced susceptibility to FQ	Boolean (True or False)
Page 3	ShigeSero	Shigella spp.: Serology	Boolean (True or False)
Page 3	ShigeMicrodi	Shigella spp.: Microdilution	Boolean (True or False)
Page 3	ShigeGeno	Shigella spp.: Genotypic method	Boolean (True or False)
Page 3	ShigeCarbape	Shigella spp.: Differentiation of carbapenemases	Boolean (True or False)
Page 3	ShigeBro	Shigella spp.: Broth dilution	Boolean (True or False)
Page 3	ShigeChromo	Shigella spp.: Chromogenic method	Boolean (True or False)
Page 3	ShigeBlac	Shigella spp.: beta-lactamase test	Boolean (True or False)
Page 3	ShigeAgar	Shigella spp.: Agar dilution	Boolean (True or False)
Page 3	ShigeMorpho	Shigella spp.: Morphology	Boolean (True or False)
Page 3	ShigeColori	Shigella spp.: Colorimetric method (Blue-Carba/ Carba NP)	Boolean (True or False)
Page 3	ShigeCoagul	Shigella spp.: Coagulase	Boolean (True or False)
Page 3	ShigeMicros	Shigella spp.: Microscopic characteristic	Boolean (True or False)
Page 3	ShigeDtest	Shigella spp.: D-test	Boolean (True or False)
Page 3	ShigeLatex	Shigella spp.: Latex for PBP2a (MRSA)	Boolean (True or False)
Page 3	ShigeOxidase	Shigella spp.: Oxidase	Boolean (True or False)
Page 3	ShigeIDKit	Shigella spp.: ID kits	Boolean (True or False)
Page 3	ShigePCR	Shigella spp.: PCR	Boolean (True or False)
Page 3	ShigeOBS	Observations: Shigella spp.	Multiline text
Page 3	ShigeRTPCR	Shigella spp.: RT PCR	Boolean (True or False)
Page 3	ShigeHybri	Shigella spp.: Hybridization	Boolean (True or False)
Page 3	ShigeSeque	Shigella spp.: Sequencing	Boolean (True or False)
Page 3	ShigeWhole	Shigella spp.: Whole genome sequencing	Boolean (True or False)
Page 3	EcoliYN	E. coli	Option: Number (0=Yes, 1= No)
Page 3	EcoliManu	E. coli: Manual (Biochemical tests)	Boolean (True or False)
Page 3	EcoliDisk	E. coli: Disk diffusion method	Boolean (True or False)
Page 3	EcoliHodge	E. coli: Hodge test	Boolean (True or False)
Page 3	EcoliEsbl	E. coli: ESBL	Boolean (True or False)
Page 3	EcoliAuto	E. coli: Automated method (identification)	Boolean (True or False)
Page 3	EcoliAntibioAuto	E. coli: Automated method (antibiogram)	Boolean (True or False)
Page 3	EcoliAmp	E. coli: AMP-C test	Boolean (True or False)
Page 3	EcoliMini	E. coli: Miniaturized (API)	Boolean (True or False)
Page 3	EcoliEpsil	E. coli: Epsilon meter method	Boolean (True or False)
Page 3	EcoliImmuno	E. coli: Immunological method	Boolean (True or False)
Page 3	EcoliMicrodi	E. coli: Microdilution	Boolean (True or False)
Page 3	EcoliSero	E. coli: Serology	Boolean (True or False)
Page 3	EcoliFQ	E. coli: Reduced susceptibility to FQ	Boolean (True or False)
Page 3	EcoliGeno	E. coli: Genotypic method	Boolean (True or False)
Page 3	EcoliBro	E. coli: Broth dilution	Boolean (True or False)
Page 3	EcoliCarbape	E. coli: Differentiation of carbapenemases	Boolean (True or False)
Page 3	EcoliChromo	E. coli: Chromogenic method	Boolean (True or False)
Page 3	EcoliAgar	E. coli: Agar dilution	Boolean (True or False)
Page 3	EcoliBlac	E. coli: beta-lactamase test	Boolean (True or False)
Page 3	EcoliMorpho	E. coli: Morphology	Boolean (True or False)
Page 3	EcoliCoagul	E. coli: Coagulase	Boolean (True or False)
Page 3	EcoliColori	E. coli: Colorimetric method (Blue-Carba/ Carba NP)	Boolean (True or False)
Page 3	EcoliMicros	E. coli: Microscopic characteristic	Boolean (True or False)
Page 3	EcoliDtest	E. coli: D-test	Boolean (True or False)
Page 3	EcoliLatex	E. coli: Latex for PBP2a (MRSA)	Boolean (True or False)
Page 3	EcoliIDKit	E. coli: ID kits	Boolean (True or False)
Page 3	EcoliOxidase	E. coli: Oxidase	Boolean (True or False)
Page 3	EcoliOBS	Observations: E. coli	Multiline text
Page 3	EcoliPCR	E. coli: PCR	Boolean (True or False)
Page 3	EcoliRTPCR	E. coli: RT PCR	Boolean (True or False)
Page 3	EcoliHybri	E. coli: Hybridization	Boolean (True or False)
Page 3	EcoliSeque	E. coli: Sequencing	Boolean (True or False)

Page 3	EcoliWhole	E. coli: Whole genome sequencing	Boolean (True or False)
Page 3	HinfluenzaeYN	H. influenzae	Option: Number (0=Yes, 1= No)
Page 3	InfluDisk	H. influenzae: Disk diffusion method	Boolean (True or False)
Page 3	InfluManu	H. influenzae: Manual (Biochemical tests)	Boolean (True or False)
Page 3	InfluEsbl	H. influenzae: ESBL	Boolean (True or False)
Page 3	InfluHodge	H. influenzae: Hodge test	Boolean (True or False)
Page 3	InfluAuto	H. influenzae: Automated method (identification)	Boolean (True or False)
Page 3	InfluAntibioAuto	H. influenzae: Automated method (antibiogram)	Boolean (True or False)
Page 3	InfluAmp	H. influenzae: AMP-C test	Boolean (True or False)
Page 3	InfluMini	H. influenzae: Miniaturized (API)	Boolean (True or False)
Page 3	InfluEpsil	H. influenzae: Epsilonometer method	Boolean (True or False)
Page 3	InfluImmuno	H. influenzae: Immunological method	Boolean (True or False)
Page 3	InfluSero	H. influenzae: Serology	Boolean (True or False)
Page 3	InfluMicrodi	H. influenzae: Microdilution	Boolean (True or False)
Page 3	InfluFQ	H. influenzae: Reduced susceptibility to FQ	Boolean (True or False)
Page 3	InfluGeno	H. influenzae: Genotypic method	Boolean (True or False)
Page 3	InfluCarbape	H. influenzae: Differentiation of carbapenemases	Boolean (True or False)
Page 3	InfluBro	H. influenzae: Broth dilution	Boolean (True or False)
Page 3	InfluChromo	H. influenzae: Chromogenic method	Boolean (True or False)
Page 3	InfluBlac	H. influenzae: beta-lactamase test	Boolean (True or False)
Page 3	InfluAgar	H. influenzae: Agar dilution	Boolean (True or False)
Page 3	InfluMorpho	H. influenzae: Morphology	Boolean (True or False)
Page 3	InfluCoagul	H. influenzae: Coagulase	Boolean (True or False)
Page 3	InfluColori	H. influenzae: Colorimetric method (Blue-Carba/ Carba NP)	Boolean (True or False)
Page 3	InfluMicros	H. influenzae: Microscopic characteristic	Boolean (True or False)
Page 3	InfluDtest	H. influenzae: D-test	Boolean (True or False)
Page 3	InfluLatex	H. influenzae: Latex for PBP2a (MRSA)	Boolean (True or False)
Page 3	InfluIDKit	H. influenzae: ID kits	Boolean (True or False)
Page 3	InfluOxidase	H. influenzae: Oxidase	Boolean (True or False)
Page 3	InfluOBS	Observations: H. influenzae	Multiline text
Page 3	InfluPCR	H. influenzae: PCR	Boolean (True or False)
Page 3	InfluRTPCR	H. influenzae: RT PCR	Boolean (True or False)
Page 3	InfluHybri	H. influenzae: Hybridization	Boolean (True or False)
Page 3	InfluSeque	H. influenzae: Sequencing	Boolean (True or False)
Page 3	InfluWhole	H. influenzae: Whole genome sequencing	Boolean (True or False)
Page 4	MeniYN	N. meningitidis	Option: Number (0=Yes, 1= No)
Page 4	MeniManu	N. meningitidis: Manual (Biochemical tests)	Boolean (True or False)
Page 4	MeniDisk	N. meningitidis: Disk diffusion method	Boolean (True or False)
Page 4	MeniHodge	N. meningitidis: Hodge test	Boolean (True or False)
Page 4	MeniEsbl	N. meningitidis: ESBL	Boolean (True or False)
Page 4	MeniAuto	N. meningitidis: Automated method	Boolean (True or False)
Page 4	MeniAntibioAuto	N. meningitidis: Automated method	Boolean (True or False)
Page 4	MeniAmp	N. meningitidis: AMP-C test	Boolean (True or False)
Page 4	MeniMini	N. meningitidis: Miniaturized (API)	Boolean (True or False)
Page 4	MeniEpsil	N. meningitidis: Epsilonometer method	Boolean (True or False)
Page 4	MeniImmuno	N. meningitidis: Immunological method	Boolean (True or False)
Page 4	MeniSero	N. meningitidis: Serology	Boolean (True or False)
Page 4	MeniMicrodi	N. meningitidis: Microdilution	Boolean (True or False)
Page 4	MeniFQ	N. meningitidis: Reduced susceptibility to FQ	Boolean (True or False)
Page 4	MeniGeno	N. meningitidis: Genotypic method	Boolean (True or False)
Page 4	MeniBro	N. meningitidis: Broth dilution	Boolean (True or False)
Page 4	MeniCarbape	N. meningitidis: Differentiation of carbapenemases	Boolean (True or False)
Page 4	MeniChromo	N. meningitidis: Chromogenic method	Boolean (True or False)
Page 4	MeniAgar	N. meningitidis: Agar dilution	Boolean (True or False)
Page 4	MeniBlac	N. meningitidis: beta-lactamase test	Boolean (True or False)
Page 4	MeniMorpho	N. meningitidis: Morphology	Boolean (True or False)

Page 4	MeniCoagul	N. meningitidis: Coagulase	Boolean (True or False)
Page 4	MeniColori	N. meningitidis: Colorimetric method (Blue-Carba/ Carba NP)	Boolean (True or False)
Page 4	MeniMicros	N. meningitidis: Microscopic characteristic	Boolean (True or False)
Page 4	MeniDtest	N. meningitidis: D-test	Boolean (True or False)
Page 4	MeniLatex	N. meningitidis: Latex for PBP2a (MRSA)	Boolean (True or False)
Page 4	MeniIDKit	N. meningitidis: ID kits	Boolean (True or False)
Page 4	MeniOxidase	N. meningitidis: Oxidase	Boolean (True or False)
Page 4	MeniOBS	Observations: N. meningitidis	Multiline text
Page 4	MeniPCR	N. meningitidis: PCR	Boolean (True or False)
Page 4	MeniRTPCR	N. meningitidis: RT PCR	Boolean (True or False)
Page 4	MeniHybri	N. meningitidis: Hybridization	Boolean (True or False)
Page 4	MeniSeque	N. meningitidis: Sequencing	Boolean (True or False)
Page 4	MeniWhole	N. meningitidis: Whole genome sequencing	Boolean (True or False)
Page 4	GonoYN	N. gonorrhoeae	Option: Number (0=Yes, 1= No)
Page 4	GonoDisk	N. gonorrhoeae: Disk diffusion method	Boolean (True or False)
Page 4	GonoManu	N. gonorrhoeae: Manual (Biochemical tests)	Boolean (True or False)
Page 4	GonoHodge	N. gonorrhoeae: Hodge test	Boolean (True or False)
Page 4	GonoEsbl	N. gonorrhoeae: ESBL	Boolean (True or False)
Page 4	GonoAuto	N. gonorrhoeae: Automated method (identification)	Boolean (True or False)
Page 4	GonoAmp	N. gonorrhoeae: AMP-C test	Boolean (True or False)
Page 4	GonoAntibioAuto	N. gonorrhoeae: Automated method (antibiogram)	Boolean (True or False)
Page 4	GonoMini	N. gonorrhoeae: Miniaturized (API)	Boolean (True or False)
Page 4	GonoImmuno	N. gonorrhoeae: Immunological method	Boolean (True or False)
Page 4	GonoEpsil	N. gonorrhoeae: Epsilometer method	Boolean (True or False)
Page 4	GonoSero	N. gonorrhoeae: Serology	Boolean (True or False)
Page 4	GonoFQ	N. gonorrhoeae: Reduced susceptibility to FQ	Boolean (True or False)
Page 4	GonoMicrodi	N. gonorrhoeae: Microdilution	Boolean (True or False)
Page 4	GonoGeno	N. gonorrhoeae: Genotypic method	Boolean (True or False)
Page 4	GonoCarbape	N. gonorrhoeae: Differentiation of carbapenemases	Boolean (True or False)
Page 4	GonoBro	N. gonorrhoeae: Broth dilution	Boolean (True or False)
Page 4	GonoChromo	N. gonorrhoeae: Chromogenic method	Boolean (True or False)
Page 4	GonoBlac	N. gonorrhoeae: beta-lactamase test	Boolean (True or False)
Page 4	GonoAgar	N. gonorrhoeae: Agar dilution	Boolean (True or False)
Page 4	GonoMorpho	N. gonorrhoeae: Morphology	Boolean (True or False)
Page 4	GonoCoagul	N. gonorrhoeae: Coagulase	Boolean (True or False)
Page 4	GonoColori	N. gonorrhoeae: Colorimetric method (Blue-Carba/ Carba NP)	Boolean (True or False)
Page 4	GonoMicros	N. gonorrhoeae: Microscopic characteristic	Boolean (True or False)
Page 4	GonoDtest	N. gonorrhoeae: D-test	Boolean (True or False)
Page 4	GonoLatex	N. gonorrhoeae: Latex for PBP2a (MRSA)	Boolean (True or False)
Page 4	GonoOxidase	N. gonorrhoeae: Oxidase	Boolean (True or False)
Page 4	GonoIDKit	N. gonorrhoeae: ID kits	Boolean (True or False)
Page 4	GonoPCR	N. gonorrhoeae: PCR	Boolean (True or False)
Page 4	GonoOBS	Observations: N. gonorrhoeae	Multiline text
Page 4	GonoRTPCR	N. gonorrhoeae: RT PCR	Boolean (True or False)
Page 4	GonoHybri	N. gonorrhoeae: Hybridization	Boolean (True or False)
Page 4	GonoSeque	N. gonorrhoeae: Sequencing	Boolean (True or False)
Page 4	GonoWhole	N. gonorrhoeae: Whole genome sequencing	Boolean (True or False)
Page 4	hemoYN	beta-hemolytic Streptococcus	Option: Number (0=Yes, 1= No)
Page 4	HemoDisk	beta-hemolytic Streptococcus: Disk diffusion method	Boolean (True or False)
Page 4	HemoHodge	beta-hemolytic Streptococcus: Hodge test	Boolean (True or False)
Page 4	HemoManu	beta-hemolytic Streptococcus: Manual (Biochemical tests)	Boolean (True or False)
Page 4	HemoEsbl	beta-hemolytic Streptococcus: ESBL	Boolean (True or False)
Page 4	HemoAuto	beta-hemolytic Streptococcus: Automated method (identification)	Boolean (True or False)
Page 4	HemoAmp	beta-hemolytic Streptococcus: AMP-C test	Boolean (True or False)

Page 4	HemoAntibioAuto	beta-hemolytic Streptococcus: Automated method (antibiogram)	Boolean (True or False)
Page 4	HemoMini	beta-hemolytic Streptococcus: Miniaturized (API)	Boolean (True or False)
Page 4	HemoImmuno	beta-hemolytic Streptococcus: Immunological method	Boolean (True or False)
Page 4	HemoEpsil	beta-hemolytic Streptococcus: Epsilon meter method	Boolean (True or False)
Page 4	HemoSero	beta-hemolytic Streptococcus: Serology	Boolean (True or False)
Page 4	HemoFQ	beta-hemolytic Streptococcus: Reduced susceptibility to FQ	Boolean (True or False)
Page 4	HemoMicrodi	beta-hemolytic Streptococcus: Microdilution	Boolean (True or False)
Page 4	HemoGeno	beta-hemolytic Streptococcus: Genotypic method	Boolean (True or False)
Page 4	HemoBro	beta-hemolytic Streptococcus: Broth dilution	Boolean (True or False)
Page 4	HemoCarbape	beta-hemolytic Streptococcus: Differentiation of carbapenemases	Boolean (True or False)
Page 4	HemoChromo	beta-hemolytic Streptococcus: Chromogenic method	Boolean (True or False)
Page 4	HemoBlac	beta-hemolytic Streptococcus: beta-lactamase test	Boolean (True or False)
Page 4	HemoAgar	beta-hemolytic Streptococcus: Agar dilution	Boolean (True or False)
Page 4	HemoMorpho	beta-hemolytic Streptococcus: Morphology	Boolean (True or False)
Page 4	HemoCoagul	beta-hemolytic Streptococcus: Coagulase	Boolean (True or False)
Page 4	HemoColori	beta-hemolytic Streptococcus: Colorimetric method (Blue-Carba/ Carba NP)	Boolean (True or False)
Page 4	HemoMicros	beta-hemolytic Streptococcus: Microscopic characteristic	Boolean (True or False)
Page 4	HemoDtest	beta-hemolytic Streptococcus: D-test	Boolean (True or False)
Page 4	HemoLatex	beta-hemolytic Streptococcus: Latex for PBP2a (MRSA)	Boolean (True or False)
Page 4	HemoOxidase	beta-hemolytic Streptococcus: Oxidase	Boolean (True or False)
Page 4	HemoIDKit	beta-hemolytic Streptococcus: ID kits	Boolean (True or False)
Page 4	HemoPCR	beta-hemolytic Streptococcus: PCR	Boolean (True or False)
Page 4	HemoOBS	Observations:beta-hemolytic Streptococcus	Multiline text
Page 4	HemoRTPCR	beta-hemolytic Streptococcus: RT PCR	Boolean (True or False)
Page 4	HemoHybri	beta-hemolytic Streptococcus: Hybridization	Boolean (True or False)
Page 4	HemoSeque	beta-hemolytic Streptococcus: Sequencing	Boolean (True or False)
Page 4	HemoWhole	beta-hemolytic Streptococcus: Whole genome sequencing	Boolean (True or False)
Page 5	PneuYN	S. pneumoniae	Option: Number (0=Yes, 1= No)
Page 5	PneuEsbl	S. pneumoniae: ESBL	Boolean (True or False)
Page 5	PneuHodge	S. pneumoniae: Hodge test	Boolean (True or False)
Page 5	PneuManu	S. pneumoniae: Manual (Biochemical tests)	Boolean (True or False)
Page 5	PneuDisk	S. pneumoniae: Disk diffusion method	Boolean (True or False)
Page 5	PneuAuto	S. pneumoniae: Automated method (identification)	Boolean (True or False)
Page 5	PneuAntibioAuto	S. pneumoniae: Automated method (antibiogram)	Boolean (True or False)
Page 5	PneuAmp	S. pneumoniae: AMP-C test	Boolean (True or False)
Page 5	PneuMini	S. pneumoniae: Miniaturized (API)	Boolean (True or False)
Page 5	PneuEpsil	S. pneumoniae: Epsilon meter method	Boolean (True or False)
Page 5	PneuImmuno	S. pneumoniae: Immunological method	Boolean (True or False)
Page 5	PneuMicrodi	S. pneumoniae: Microdilution	Boolean (True or False)
Page 5	PneuFQ	S. pneumoniae: Reduced susceptibility to FQ	Boolean (True or False)
Page 5	PneuSero	S. pneumoniae: Serology	Boolean (True or False)
Page 5	PneuBro	S. pneumoniae: Broth dilution	Boolean (True or False)
Page 5	PneuCarbape	S. pneumoniae: Differentiation of carbapenemases	Boolean (True or False)
Page 5	PneuGeno	S. pneumoniae: Genotypic method	Boolean (True or False)
Page 5	PneuChromo	S. pneumoniae: Chromogenic method	Boolean (True or False)
Page 5	PneuAgar	S. pneumoniae: Agar dilution	Boolean (True or False)
Page 5	PneuBlac	S. pneumoniae: beta-lactamase test	Boolean (True or False)
Page 5	PneuMorpho	S. pneumoniae: Morphology	Boolean (True or False)
Page 5	PneuColori	S. pneumoniae: Colorimetric method (Blue-Carba/ Carba NP)	Boolean (True or False)
Page 5	PneuCoagul	S. pneumoniae: Coagulase	Boolean (True or False)
Page 5	PneuMicros	S. pneumoniae: Microscopic characteristic	Boolean (True or False)
Page 5	PneuDtest	S. pneumoniae: D-test	Boolean (True or False)
Page 5	PneuLatex	S. pneumoniae: Latex for PBP2a (MRSA)	Boolean (True or False)

Page 5	PneuOxidase	S. pneumoniae: Oxidase	Boolean (True or False)
Page 5	PneuIDKit	S. pneumoniae: ID kits	Boolean (True or False)
Page 5	PneuOBS	Observations: S. pneumoniae	Multiline text
Page 5	PneuPCR	S. pneumoniae: PCR	Boolean (True or False)
Page 5	PneuRTPCR	S. pneumoniae: RT PCR	Boolean (True or False)
Page 5	PneuHybri	S. pneumoniae: Hybridization	Boolean (True or False)
Page 5	PneuSeque	S. pneumoniae: Sequencing	Boolean (True or False)
Page 5	PneuWhole	S. pneumoniae: Whole genome sequencing	Boolean (True or False)
Page 5	CampYN	Campylobacter spp.	Option: Number (0=Yes, 1= No)
Page 5	CampDisk	Campylobacter spp.: Disk diffusion method	Boolean (True or False)
Page 5	CampManu	Campylobacter spp.: Manual (Biochemical tests)	Boolean (True or False)
Page 5	CampEsbl	Campylobacter spp.: ESBL	Boolean (True or False)
Page 5	CampHodge	Campylobacter spp.: Hodge test	Boolean (True or False)
Page 5	CampAuto	Campylobacter spp.: Automated method (identification)	Boolean (True or False)
Page 5	CampAntibioAuto	Campylobacter spp.: Automated method (antibiogram)	Boolean (True or False)
Page 5	CampAmp	Campylobacter spp.: AMP-C test	Boolean (True or False)
Page 5	CampMini	Campylobacter spp.: Miniaturized (API)	Boolean (True or False)
Page 5	CampEpsil	Campylobacter spp.: Epsilonometer method	Boolean (True or False)
Page 5	CampImmuno	Campylobacter spp.: Immunological method	Boolean (True or False)
Page 5	CampSero	Campylobacter spp.: Serology	Boolean (True or False)
Page 5	CampFQ	Campylobacter spp.: Reduced susceptibility to FQ	Boolean (True or False)
Page 5	CampMicrodi	Campylobacter spp.: Microdilution	Boolean (True or False)
Page 5	CampGeno	Campylobacter spp.: Genotypic method	Boolean (True or False)
Page 5	CampCarbape	Campylobacter spp.: Differentiation of carbapenemases	Boolean (True or False)
Page 5	CampBro	Campylobacter spp.: Broth dilution	Boolean (True or False)
Page 5	CampChromo	Campylobacter spp.: Chromogenic method	Boolean (True or False)
Page 5	CampBlac	Campylobacter spp.: beta-lactamase test	Boolean (True or False)
Page 5	CampAgar	Campylobacter spp.: Agar dilution	Boolean (True or False)
Page 5	CampMorpho	Campylobacter spp.: Morphology	Boolean (True or False)
Page 5	CampCoagul	Campylobacter spp.: Coagulase	Boolean (True or False)
Page 5	CampColori	Campylobacter spp.: Colorimetric method (Blue-Carba/ Carba NP)	Boolean (True or False)
Page 5	CampMicros	Campylobacter spp.: Microscopic characteristic	Boolean (True or False)
Page 5	CampDtest	Campylobacter spp.: D-test	Boolean (True or False)
Page 5	CampLatex	Campylobacter spp.: Latex for PBP2a (MRSA)	Boolean (True or False)
Page 5	CampIDKit	Campylobacter spp.: ID kits	Boolean (True or False)
Page 5	CampOxidase	Campylobacter spp.: Oxidase	Boolean (True or False)
Page 5	CampPCR	Campylobacter spp.: PCR	Boolean (True or False)
Page 5	CampOBS	Campylobacter spp.: Observations	Multiline text
Page 5	CampRTPCR	Campylobacter spp.: RT PCR	Boolean (True or False)
Page 5	CampHybri	Campylobacter spp.: Hybridization	Boolean (True or False)
Page 5	CampSeque	Campylobacter spp.: Sequencing	Boolean (True or False)
Page 5	CampWhole	Campylobacter spp.: Whole genome sequencing	Boolean (True or False)
Page 5	StaphYN	Staphylococcus spp.	Option: Number (0=Yes, 1= No)
Page 5	StaphManu	Staphylococcus spp.: Manual (Biochemical tests)	Boolean (True or False)
Page 5	StaphEsbl	Staphylococcus spp.: ESBL	Boolean (True or False)
Page 5	StaphDisk	Staphylococcus spp.: Disk diffusion method	Boolean (True or False)
Page 5	StaphHodge	Staphylococcus spp.: Hodge test	Boolean (True or False)
Page 5	StaphAuto	Staphylococcus spp.: Automated method (identification)	Boolean (True or False)
Page 5	StaphAmp	Staphylococcus spp.: AMP-C test	Boolean (True or False)
Page 5	StaphAntibioAuto	Staphylococcus spp.: Automated method (antibiogram)	Boolean (True or False)
Page 5	StaphMini	Staphylococcus spp.: Miniaturized (API)	Boolean (True or False)
Page 5	StaphImmuno	Staphylococcus spp.: Immunological method	Boolean (True or False)
Page 5	StaphEpsil	Staphylococcus spp.: Epsilonometer method	Boolean (True or False)
Page 5	StaphFQ	Staphylococcus spp.: Reduced susceptibility to FQ	Boolean (True or False)
Page 5	StaphSero	Staphylococcus spp.: Serology	Boolean (True or False)

Page 5	StaphMicrodi	Staphylococcus spp.: Microdilution	Boolean (True or False)
Page 5	StaphGeno	Staphylococcus spp.: Genotypic method	Boolean (True or False)
Page 5	StaphCarbape	Staphylococcus spp.: Differentiation of carbapenemases	Boolean (True or False)
Page 5	StaphBro	Staphylococcus spp.: Broth dilution	Boolean (True or False)
Page 5	StaphBlac	Staphylococcus spp.: beta-lactamase test	Boolean (True or False)
Page 5	StaphChromo	Staphylococcus spp.: Chromogenic method	Boolean (True or False)
Page 5	StaphAgar	Staphylococcus spp.: Agar dilution	Boolean (True or False)
Page 5	StaphMorpho	Staphylococcus spp.: Morphology	Boolean (True or False)
Page 5	StaphCoagul	Staphylococcus spp.: Coagulase	Boolean (True or False)
Page 5	StaphColori	Staphylococcus spp.: Colorimetric method (Blue-Carba/ Carba NP)	Boolean (True or False)
Page 5	StaphMicros	Staphylococcus spp.: Microscopic characteristic	Boolean (True or False)
Page 5	StaphDtest	Staphylococcus spp.: D-test	Boolean (True or False)
Page 5	StaphLatex	Staphylococcus spp.: Latex for PBP2a (MRSA)	Boolean (True or False)
Page 5	StaphIDKit	Staphylococcus spp.: ID kits	Boolean (True or False)
Page 5	StaphOxidase	Staphylococcus spp.: Oxidase	Boolean (True or False)
Page 5	StaphOBS	Observations: Staphylococcus spp.	Multiline text
Page 5	StaphPCR	Staphylococcus spp.: PCR	Boolean (True or False)
Page 5	StaphRTPCR	Staphylococcus spp.: RT PCR	Boolean (True or False)
Page 5	StaphHybri	Staphylococcus spp.: Hybridization	Boolean (True or False)
Page 5	StaphSeque	Staphylococcus spp.: Sequencing	Boolean (True or False)
Page 5	StaphWhole	Staphylococcus spp.: Whole genome sequencing	Boolean (True or False)
Page 6	EnterYN	Enterobacter cloacae	Option: Number (0=Yes, 1= No)
Page 6	EnterHodge	Enterobacter cloacae: Hodge test	Boolean (True or False)
Page 6	EnterManu	Enterobacter cloacae: Manual (Biochemical tests)	Boolean (True or False)
Page 6	EnterEsbl	Enterobacter cloacae: ESBL	Boolean (True or False)
Page 6	EnterDisk	Enterobacter cloacae: Disk diffusion method	Boolean (True or False)
Page 6	EnterAuto	Enterobacter cloacae: Automated method (identification)	Boolean (True or False)
Page 6	EnterAntibioAuto	Enterobacter cloacae: Automated method (antibiogram)	Boolean (True or False)
Page 6	EnterAmp	Enterobacter cloacae: AMP-C test	Boolean (True or False)
Page 6	EnterMini	Enterobacter cloacae: Miniaturized (API)	Boolean (True or False)
Page 6	EnterImmuno	Enterobacter cloacae: Immunological method	Boolean (True or False)
Page 6	EnterEpsil	Enterobacter cloacae: Epsilometer method	Boolean (True or False)
Page 6	EnterFQ	Enterobacter cloacae: Reduced susceptibility to FQ	Boolean (True or False)
Page 6	EnterSero	Enterobacter cloacae: Serology	Boolean (True or False)
Page 6	EnterMicrodi	Enterobacter cloacae: Microdilution	Boolean (True or False)
Page 6	EnterCarbape	Enterobacter cloacae: Differentiation of carbapenemases	Boolean (True or False)
Page 6	EnterGeno	Enterobacter cloacae: Genotypic method	Boolean (True or False)
Page 6	EnterBro	Enterobacter cloacae: Broth dilution	Boolean (True or False)
Page 6	EnterBlac	Enterobacter cloacae: beta-lactamase test	Boolean (True or False)
Page 6	EnterChromo	Enterobacter cloacae: Chromogenic method	Boolean (True or False)
Page 6	EnterAgar	Enterobacter cloacae: Agar dilution	Boolean (True or False)
Page 6	EnterColori	Enterobacter cloacae: Colorimetric method (Blue-Carba/ Carba NP)	Boolean (True or False)
Page 6	EnterCoagul	Enterobacter cloacae: Coagulase	Boolean (True or False)
Page 6	EnterMorpho	Enterobacter cloacae: Morphology	Boolean (True or False)
Page 6	EnterMicros	Enterobacter cloacae: Microscopic characteristic	Boolean (True or False)
Page 6	EnterDtest	Enterobacter cloacae: D-test	Boolean (True or False)
Page 6	EnterLatex	Enterobacter cloacae: Latex for PBP2a (MRSA)	Boolean (True or False)
Page 6	EnterIDKit	Enterobacter cloacae: ID kits	Boolean (True or False)
Page 6	EnterOxidase	Enterobacter cloacae: Oxidase	Boolean (True or False)
Page 6	EnterPCR	Enterobacter cloacae: PCR	Boolean (True or False)
Page 6	EnterOBS	Observations: Enterobacter cloacae	Multiline text
Page 6	EnterRTPCR	Enterobacter cloacae: RT PCR	Boolean (True or False)
Page 6	EnterHybri	Enterobacter cloacae: Hybridization	Boolean (True or False)
Page 6	EnterSeque	Enterobacter cloacae: Sequencing	Boolean (True or False)

Page 6	EnterWhole	Enterobacter cloacae: Whole genome sequencing	Boolean (True or False)
Page 6	KlebYN	Klebsiella pneumoniae	Option: Number (0=Yes, 1= No)
Page 6	KlebManu	Klebsiella pneumoniae: Manual (Biochemical tests)	Boolean (True or False)
Page 6	KlebEsbl	Klebsiella pneumoniae: ESBL	Boolean (True or False)
Page 6	KlebDisk	Klebsiella pneumoniae: Disk diffusion method	Boolean (True or False)
Page 6	KlebHodge	Klebsiella pneumoniae: Hodge test	Boolean (True or False)
Page 6	KlebAuto	Klebsiella pneumoniae: Automated method (identification)	Boolean (True or False)
Page 6	KlebAntibioAuto	Klebsiella pneumoniae: Automated method (antibiogram)	Boolean (True or False)
Page 6	KlebAmp	Klebsiella pneumoniae: AMP-C test	Boolean (True or False)
Page 6	KlebMini	Klebsiella pneumoniae: Miniaturized (API)	Boolean (True or False)
Page 6	KlebEpsil	Klebsiella pneumoniae: Epsilonometer method	Boolean (True or False)
Page 6	KlebImmuno	Klebsiella pneumoniae: Immunological method	Boolean (True or False)
Page 6	KlebSero	Klebsiella pneumoniae: Serology	Boolean (True or False)
Page 6	KlebFQ	Klebsiella pneumoniae: Reduced susceptibility to FQ	Boolean (True or False)
Page 6	KlebMicrodi	Klebsiella pneumoniae: Microdilution	Boolean (True or False)
Page 6	KlebGeno	Klebsiella pneumoniae: Genotypic method	Boolean (True or False)
Page 6	KlebBro	Klebsiella pneumoniae: Broth dilution	Boolean (True or False)
Page 6	KlebCarbape	Klebsiella pneumoniae: Differentiation of carbapenemases	Boolean (True or False)
Page 6	KlebChromo	Klebsiella pneumoniae: Chromogenic method	Boolean (True or False)
Page 6	KlebAgar	Klebsiella pneumoniae: Agar dilution	Boolean (True or False)
Page 6	KlebBlac	Klebsiella pneumoniae: beta-lactamase test	Boolean (True or False)
Page 6	KlebColori	Klebsiella pneumoniae: Colorimetric method (Blue-Carba/ Carba NP)	Boolean (True or False)
Page 6	KlebMorpho	Klebsiella pneumoniae: Morphology	Boolean (True or False)
Page 6	KlebCoagul	Klebsiella pneumoniae: Coagulase	Boolean (True or False)
Page 6	KlebDtest	Klebsiella pneumoniae: D-test	Boolean (True or False)
Page 6	KlebLatex	Klebsiella pneumoniae: Latex for PBP2a (MRSA)	Boolean (True or False)
Page 6	KlebMicros	Klebsiella pneumoniae: Microscopic characteristic	Boolean (True or False)
Page 6	KlebOxidase	Klebsiella pneumoniae: Oxidase	Boolean (True or False)
Page 6	KlebIDKit	Klebsiella pneumoniae: ID kits	Boolean (True or False)
Page 6	KlebOBS	Observations: Klebsiella pneumoniae	Multiline text
Page 6	KlebPCR	Klebsiella pneumoniae: PCR	Boolean (True or False)
Page 6	KlebRTPCR	Klebsiella pneumoniae: RT PCR	Boolean (True or False)
Page 6	KlebHybri	Klebsiella pneumoniae: Hybridization	Boolean (True or False)
Page 6	KlebSeque	Klebsiella pneumoniae: Sequencing	Boolean (True or False)
Page 6	KlebWhole	Klebsiella pneumoniae: Whole genome sequencing	Boolean (True or False)
Page 6	EnteroYN	Enterococcus spp.	Option: Number (0=Yes, 1= No)
Page 6	EnteroManu	Enterococcus spp.: Manual (Biochemical tests)	Boolean (True or False)
Page 6	EnteroEsbl	Enterococcus spp.: ESBL	Boolean (True or False)
Page 6	EnteroHodge	Enterococcus spp.: Hodge test	Boolean (True or False)
Page 6	EnteroDisk	Enterococcus spp.: Disk diffusion method	Boolean (True or False)
Page 6	EnteroAuto	Enterococcus spp.: Automated method (identification)	Boolean (True or False)
Page 6	EnteroAmp	Enterococcus spp.: AMP-C test	Boolean (True or False)
Page 6	EnteroAntibioAuto	Enterococcus spp.: Automated method (antibiogram)	Boolean (True or False)
Page 6	EnteroMini	Enterococcus spp.: Miniaturized (API)	Boolean (True or False)
Page 6	EnteroImmuno	Enterococcus spp.: Immunological method	Boolean (True or False)
Page 6	EnteroEpsil	Enterococcus spp.: Epsilonometer method	Boolean (True or False)
Page 6	EnteroSero	Enterococcus spp.: Serology	Boolean (True or False)
Page 6	EnteroFQ	Enterococcus spp.: Reduced susceptibility to FQ	Boolean (True or False)
Page 6	EnteroMicrodi	Enterococcus spp.: Microdilution	Boolean (True or False)
Page 6	EnteroGeno	Enterococcus spp.: Genotypic method	Boolean (True or False)
Page 6	EnteroCarbape	Enterococcus spp.: Differentiation of carbapenemases	Boolean (True or False)
Page 6	EnteroBro	Enterococcus spp.: Broth dilution	Boolean (True or False)
Page 6	EnteroChromo	Enterococcus spp.: Chromogenic method	Boolean (True or False)
Page 6	EnteroBlac	Enterococcus spp.: beta-lactamase test	Boolean (True or False)
Page 6	EnteroAgar	Enterococcus spp.: Agar dilution	Boolean (True or False)

Page 6	EnteroMorpho	Enterococcus spp.: Morphology	Boolean (True or False)
Page 6	EnteroCoagul	Enterococcus spp.: Coagulase	Boolean (True or False)
Page 6	EnteroColori	Enterococcus spp.: Colorimetric method (Blue-Carba/ Carba NP)	Boolean (True or False)
Page 6	EnteroMicros	Enterococcus spp.: Microscopic characteristic	Boolean (True or False)
Page 6	EnteroDtest	Enterococcus spp.: D-test	Boolean (True or False)
Page 6	EnteroLatex	Enterococcus spp.: Latex for PBP2a (MRSA)	Boolean (True or False)
Page 6	EnteroIDKit	Enterococcus spp.: ID kits	Boolean (True or False)
Page 6	EnteroOxidase	Enterococcus spp.: Oxidase	Boolean (True or False)
Page 6	EnteroOBS	Enterococcus spp.: Observations	Multiline text
Page 6	EnteroPCR	Enterococcus spp.: PCR	Boolean (True or False)
Page 6	EnteroRTPCR	Enterococcus spp.: RT PCR	Boolean (True or False)
Page 6	EnteroHybri	Enterococcus spp.: Hybridization	Boolean (True or False)
Page 6	EnteroSeque	Enterococcus spp.: Sequencing	Boolean (True or False)
Page 6	EnteroWhole	Enterococcus spp.: Whole genome sequencing	Boolean (True or False)
Page 7	PaeruYN	<i>P. aeruginosa</i>	Option: Number (0=Yes, 1= No)
Page 7	AeruManu	<i>P. aeruginosa</i> : Manual (Biochemical tests)	Boolean (True or False)
Page 7	AeruDisk	<i>P. aeruginosa</i> : Disk diffusion method	Boolean (True or False)
Page 7	AeruEsbl	<i>P. aeruginosa</i> : ESBL	Boolean (True or False)
Page 7	AeruHodge	<i>P. aeruginosa</i> : Hodge test	Boolean (True or False)
Page 7	AeruAuto	<i>P. aeruginosa</i> : Automated method (identification)	Boolean (True or False)
Page 7	AeruAntibioAuto	<i>P. aeruginosa</i> : Automated method (antibiogram)	Boolean (True or False)
Page 7	AeruAmp	<i>P. aeruginosa</i> : AMP-C test	Boolean (True or False)
Page 7	AeruMini	<i>P. aeruginosa</i> : Miniaturized (API)	Boolean (True or False)
Page 7	AeruEpsil	<i>P. aeruginosa</i> : Epsilonometer method	Boolean (True or False)
Page 7	AeruImmuno	<i>P. aeruginosa</i> : Immunological method	Boolean (True or False)
Page 7	AeruSero	<i>P. aeruginosa</i> : Serology	Boolean (True or False)
Page 7	AeruMicrodi	<i>P. aeruginosa</i> : Microdilution	Boolean (True or False)
Page 7	AeruFQ	<i>P. aeruginosa</i> : Reduced susceptibility to FQ	Boolean (True or False)
Page 7	AeruGeno	<i>P. aeruginosa</i> : Genotypic method	Boolean (True or False)
Page 7	AeruBro	<i>P. aeruginosa</i> : Broth dilution	Boolean (True or False)
Page 7	AeruCarbape	<i>P. aeruginosa</i> : Differentiation of carbapenemases	Boolean (True or False)
Page 7	AeruChromo	<i>P. aeruginosa</i> : Chromogenic method	Boolean (True or False)
Page 7	AeruAgar	<i>P. aeruginosa</i> : Agar dilution	Boolean (True or False)
Page 7	AeruBlac	<i>P. aeruginosa</i> : beta-lactamase test	Boolean (True or False)
Page 7	AeruMorpho	<i>P. aeruginosa</i> : Morphology	Boolean (True or False)
Page 7	AeruCoagul	<i>P. aeruginosa</i> : Coagulase	Boolean (True or False)
Page 7	AeruColori	<i>P. aeruginosa</i> : Colorimetric method (Blue-Carba/ Carba NP)	Boolean (True or False)
Page 7	AeruMicros	<i>P. aeruginosa</i> : Microscopic characteristic	Boolean (True or False)
Page 7	AeruLatex	<i>P. aeruginosa</i> : Latex for PBP2a (MRSA)	Boolean (True or False)
Page 7	AeruDtest	<i>P. aeruginosa</i> : D-test	Boolean (True or False)
Page 7	AeruIDKit	<i>P. aeruginosa</i> : ID kits	Boolean (True or False)
Page 7	AeruOxidase	<i>P. aeruginosa</i> : Oxidase	Boolean (True or False)
Page 7	AeruPigment	<i>P. aeruginosa</i> : Pigment	Boolean (True or False)
Page 7	AeruOBS	Observations: <i>P. aeruginosa</i>	Multiline text
Page 7	AeruPCR	<i>P. aeruginosa</i> : PCR	Boolean (True or False)
Page 7	AeruRTPCR	<i>P. aeruginosa</i> : RT PCR	Boolean (True or False)
Page 7	AeruHybri	<i>P. aeruginosa</i> : Hybridization	Boolean (True or False)
Page 7	AeruSeque	<i>P. aeruginosa</i> : Sequencing	Boolean (True or False)
Page 7	AeruWhole	<i>P. aeruginosa</i> : Whole genome sequencing	Boolean (True or False)
Page 7	AcinYN	<i>Acinetobacter baumannii</i>	Option: Number (0=Yes, 1= No)
Page 7	AcinDisk	<i>Acinetobacter baumannii</i> : Disk diffusion method	Boolean (True or False)
Page 7	AcinManu	<i>Acinetobacter baumannii</i> : Manual (Biochemical tests)	Boolean (True or False)
Page 7	AcinEsbl	<i>Acinetobacter baumannii</i> : ESBL	Boolean (True or False)
Page 7	AcinHodge	<i>Acinetobacter baumannii</i> : Hodge test	Boolean (True or False)
Page 7	AcinAuto	<i>Acinetobacter baumannii</i> : Automated method (identification)	Boolean (True or False)

Page 7	AcinAntibioAuto	Acinetobacter baumannii: Automated method (antibiogram)	Boolean (True or False)
Page 7	AcinAmp	Acinetobacter baumannii: AMP-C test	Boolean (True or False)
Page 7	AcinMini	Acinetobacter baumannii: Miniaturized (API)	Boolean (True or False)
Page 7	AcinEpsil	Acinetobacter baumannii: Epsilometer method	Boolean (True or False)
Page 7	AcinImmuno	Acinetobacter baumannii: Immunological method	Boolean (True or False)
Page 7	AcinSero	Acinetobacter baumannii: Serology	Boolean (True or False)
Page 7	AcinFQ	Acinetobacter baumannii: Reduced susceptibility to FQ	Boolean (True or False)
Page 7	AcinMicrodi	Acinetobacter baumannii: Microdilution	Boolean (True or False)
Page 7	AcinGeno	Acinetobacter baumannii: Genotypic method	Boolean (True or False)
Page 7	AcinCarbape	Acinetobacter baumannii: Differentiation of carbapenemases	Boolean (True or False)
Page 7	AcinBro	Acinetobacter baumannii: Broth dilution	Boolean (True or False)
Page 7	AcinChromo	Acinetobacter baumannii: Chromogenic method	Boolean (True or False)
Page 7	AcinBlac	Acinetobacter baumannii: beta-lactamase test	Boolean (True or False)
Page 7	AcinAgar	Acinetobacter baumannii: Agar dilution	Boolean (True or False)
Page 7	AcinColori	Acinetobacter baumannii: Colorimetric method (Blue-Carba/ Carba NP)	Boolean (True or False)
Page 7	AcinMorpho	Acinetobacter baumannii: Morphology	Boolean (True or False)
Page 7	AcinCoagul	Acinetobacter baumannii: Coagulase	Boolean (True or False)
Page 7	AcinDtest	Acinetobacter baumannii: D-test	Boolean (True or False)
Page 7	AcinLatex	Acinetobacter baumannii: Latex for PBP2a (MRSA)	Boolean (True or False)
Page 7	AcinMicros	Acinetobacter baumannii: Microscopic characteristic	Boolean (True or False)
Page 7	AcinIDKit	Acinetobacter baumannii: ID kits	Boolean (True or False)
Page 7	AcinOxidase	Acinetobacter baumannii: Oxidase	Boolean (True or False)
Page 7	AcinPCR	Acinetobacter baumannii: PCR	Boolean (True or False)
Page 7	AcinOBS	Acinetobacter baumannii: Observations	Multiline text
Page 7	AcinRTPCR	Acinetobacter baumannii: RT PCR	Boolean (True or False)
Page 7	AcinHybri	Acinetobacter baumannii: Hybridization	Boolean (True or False)
Page 7	AcinSeque	Acinetobacter baumannii: Sequencing	Boolean (True or False)
Page 7	AcinWhole	Acinetobacter baumannii: Whole genome sequencing	Boolean (True or False)
Page 7	OtherEsbl	Other agent 1: ESBL	Boolean (True or False)
Page 7	OtherManu	Other agent 1: Manual (Biochemical tests)	Boolean (True or False)
Page 7	OtherDisk	Other agent 1: Disk diffusion method	Boolean (True or False)
Page 7	OtherHodge	Other agent 1: Hodge test	Boolean (True or False)
Page 7	OtherAgent01	Other agent	Multiline text
Page 7	OtherAuto	Other agent 1: Automated method (identification)	Boolean (True or False)
Page 7	OtherAntibioAuto	Other agent 1: Automated method (antibiogram)	Boolean (True or False)
Page 7	OtherAmp	Other agent 1: AMP-C test	Boolean (True or False)
Page 7	OtherEpsil	Other agent 1: Epsilometer method	Boolean (True or False)
Page 7	OtherMini	Other agent 1: Miniaturized (API)	Boolean (True or False)
Page 7	OtherImmuno	Other agent 1: Immunological method	Boolean (True or False)
Page 7	OtherMicrodi	Other agent 1: Microdilution	Boolean (True or False)
Page 7	OtherFQ	Other agent 1: Reduced susceptibility to FQ	Boolean (True or False)
Page 7	OtherSero	Other agent 1: Serology	Boolean (True or False)
Page 7	OtherGeno	Other agent 1: Genotypic method	Boolean (True or False)
Page 7	OtherBro	Other agent 1: Broth dilution	Boolean (True or False)
Page 7	OtherCarbape	Other agent 1: Differentiation of carbapenemases	Boolean (True or False)
Page 7	OtherChromo	Other agent 1: Chromogenic method	Boolean (True or False)
Page 7	OtherAgar	Other agent 1: Agar dilution	Boolean (True or False)
Page 7	OtherBlac	Other agent 1: beta-lactamase test	Boolean (True or False)
Page 7	OtherMorpho	Other agent 1: Morphology	Boolean (True or False)
Page 7	OtherCoagul	Other agent 1: Coagulase	Boolean (True or False)
Page 7	OtherColori	Other agent 1: Colorimetric method (Blue-Carba/ Carba NP)	Boolean (True or False)
Page 7	OtherMicros	Other agent 1: Microscopic characteristic	Boolean (True or False)
Page 7	OtherDtest	Other agent 1: D-test	Boolean (True or False)
Page 7	OtherLatex	Other agent 1: Latex for PBP2a (MRSA)	Boolean (True or False)
Page 7	OtherOxidase	Other agent 1: Oxidase	Boolean (True or False)

Page 7	OtherIDKit	Other agent 1: ID kits	Boolean (True or False)
Page 7	OtherPCR	Other agent 1: PCR	Boolean (True or False)
Page 7	OtherOBS	Observations: Other agent 1	Multiline text
Page 7	OtherRTPCR	Other agent 1: RT PCR	Boolean (True or False)
Page 7	OtherHybri	Other agent 1: Hybridization	Boolean (True or False)
Page 7	OtherSeque	Other agent 1: Sequencing	Boolean (True or False)
Page 7	OtherWhole	Other agent 1: Whole genome sequencing	Boolean (True or False)
Page 8	Other2Disk	Other agent 2: Disk diffusion method	Boolean (True or False)
Page 8	Other2Esbl	Other agent 2: ESBL	Boolean (True or False)
Page 8	OtherAgent02	Other agent 2	Multiline text
Page 8	Other2Manu	Other agent 2: Manual (Biochemical tests)	Boolean (True or False)
Page 8	Other2Hodge	Other agent 2: Hodge test	Boolean (True or False)
Page 8	Other2Auto	Other agent 2: Automated method (identification)	Boolean (True or False)
Page 8	Other2AntibioAuto	Other agent 2: Automated method (antibiogram)	Boolean (True or False)
Page 8	Other2Amp	Other agent 2: AMP-C test	Boolean (True or False)
Page 8	Other2Mini	Other agent 2: Miniaturized (API)	Boolean (True or False)
Page 8	Other2Epsil	Other agent 2: Epsilonometer method	Boolean (True or False)
Page 8	Other2Immuno	Other agent 2: Immunological method	Boolean (True or False)
Page 8	Other2Microdi	Other agent 2: Microdilution	Boolean (True or False)
Page 8	Other2Sero	Other agent 2: Serology	Boolean (True or False)
Page 8	Other2FQ	Other agent 2: Reduced susceptibility to FQ	Boolean (True or False)
Page 8	Other2Geno	Other agent 2: Genotypic method	Boolean (True or False)
Page 8	Other2Bro	Other agent 2: Broth dilution	Boolean (True or False)
Page 8	Other2Carbape	Other agent 2: Differentiation of carbapenemases	Boolean (True or False)
Page 8	Other2Chromo	Other agent 2: Chromogenic method	Boolean (True or False)
Page 8	Other2Agar	Other agent 2: Agar dilution	Boolean (True or False)
Page 8	Other2Blac	Other agent 2: beta-lactamase test	Boolean (True or False)
Page 8	Other2Morpho	Other agent 2: Morphology	Boolean (True or False)
Page 8	Other2Coagul	Other agent 2: Coagulase	Boolean (True or False)
Page 8	Other2Colori	Other agent 2: Colorimetric method (Blue-Carba/ Carba NP)	Boolean (True or False)
Page 8	Other2Micros	Other agent 2: Microscopic characteristic	Boolean (True or False)
Page 8	Other2Dtest	Other agent 2: D-test	Boolean (True or False)
Page 8	Other2Latex	Other agent 2: Latex for PBP2a (MRSA)	Boolean (True or False)
Page 8	Other2IDKit	Other agent 2: ID kits	Boolean (True or False)
Page 8	Other2Oxidase	Other agent 2: Oxidase	Boolean (True or False)
Page 8	Other2PCR	Other agent 2: PCR	Boolean (True or False)
Page 8	Other2OBS	Observations: Other agent 2	Multiline text
Page 8	Other2RTPCR	Other agent 2: RT PCR	Boolean (True or False)
Page 8	Other2Hybri	Other agent 2: Hybridization	Boolean (True or False)
Page 8	Other2Seque	Other agent 2: Sequencing	Boolean (True or False)
Page 8	Other2Whole	Other agent 2: Whole genome sequencing	Boolean (True or False)
Page 8	Other3Hodge	Other agent 3: Hodge test	Boolean (True or False)
Page 8	Other3Disk	Other agent 3: Disk diffusion method	Boolean (True or False)
Page 8	Other3Esbl	Other agent 3: ESBL	Boolean (True or False)
Page 8	OtherAgent03	Other agent 3	Multiline text
Page 8	Other3Manu	Other agent 3: Manual (Biochemical tests)	Boolean (True or False)
Page 8	Other3Auto	Other agent 3: Automated method (identification)	Boolean (True or False)
Page 8	Other3AntibioAuto	Other agent 3: Automated method (antibiogram)	Boolean (True or False)
Page 8	Other3Amp	Other agent 3: AMP-C test	Boolean (True or False)
Page 8	Other3Mini	Other agent 3: Miniaturized (API)	Boolean (True or False)
Page 8	Other3Epsil	Other agent 3: Epsilonometer method	Boolean (True or False)
Page 8	Other3Immuno	Other agent 3: Immunological method	Boolean (True or False)
Page 8	Other3Sero	Other agent 3: Serology	Boolean (True or False)
Page 8	Other3FQ	Other agent 3: Reduced susceptibility to FQ	Boolean (True or False)
Page 8	Other3Microdi	Other agent 3: Microdilution	Boolean (True or False)
Page 8	Other3Geno	Other agent 3: Genotypic method	Boolean (True or False)

Page 8	Other3Bro	Other agent 3: Broth dilution	Boolean (True or False)
Page 8	Other3Carbape	Other agent 3: Differentiation of carbapenemases	Boolean (True or False)
Page 8	Other3Chromo	Other agent 3: Chromogenic method	Boolean (True or False)
Page 8	Other3Blac	Other agent 3: beta-lactamase test	Boolean (True or False)
Page 8	Other3Agar	Other agent 3: Agar dilution	Boolean (True or False)
Page 8	Other3Colori	Other agent 3: Colorimetric method (Blue-Carba/ Carba NP)	Boolean (True or False)
Page 8	Other3Morpho	Other agent 3: Morphology	Boolean (True or False)
Page 8	Other3Coagul	Other agent 3: Coagulase	Boolean (True or False)
Page 8	Other3Dtest	Other agent 3: D-test	Boolean (True or False)
Page 8	Other3Latex	Other agent 3: Latex for PBP2a (MRSA)	Boolean (True or False)
Page 8	Other3Micros	Other agent 3: Microscopic characteristic	Boolean (True or False)
Page 8	Other3Oxidase	Other agent 3: Oxidase	Boolean (True or False)
Page 8	Other3IDKit	Other agent 3: ID kits	Boolean (True or False)
Page 8	Other3PCR	Other agent 3: PCR	Boolean (True or False)
Page 8	Other3OBS	Observations: Other agent 3	Multiline text
Page 8	Other3RTPCR	Other agent 3: RT PCR	Boolean (True or False)
Page 8	Other3Hybri	Other agent 3: Hybridization	Boolean (True or False)
Page 8	Other3Seque	Other agent 3: Sequencing	Boolean (True or False)
Page 8	Other3Whole	Other agent 3: Whole genome sequencing	Boolean (True or False)
Page 8	Other4Esbl	Other agent 4: ESBL	Boolean (True or False)
Page 8	Other4Manu	Other agent 4: Manual (Biochemical tests)	Boolean (True or False)
Page 8	Other4Disk	Other agent 4: Disk diffusion method	Boolean (True or False)
Page 8	Other4Hodge	Other agent 4: Hodge test	Boolean (True or False)
Page 8	OtherAgent04	Other agent 4	Multiline text
Page 8	Other4Auto	Other agent 4: Automated method (identification)	Boolean (True or False)
Page 8	Other4AntibioAuto	Other agent 4: Automated method (antibiogram)	Boolean (True or False)
Page 8	Other4Amp	Other agent 4: AMP-C test	Boolean (True or False)
Page 8	Other4Epsil	Other agent 4: Epsilon meter method	Boolean (True or False)
Page 8	Other4Immuno	Other agent 4: Immunological method	Boolean (True or False)
Page 8	Other4Mini	Other agent 4: Miniaturized (API)	Boolean (True or False)
Page 8	Other4Microdi	Other agent 4: Microdilution	Boolean (True or False)
Page 8	Other4FQ	Other agent 4: Reduced susceptibility to FQ	Boolean (True or False)
Page 8	Other4Sero	Other agent 4: Serology	Boolean (True or False)
Page 8	Other4Geno	Other agent 4: Genotypic method	Boolean (True or False)
Page 8	Other4Bro	Other agent 4: Broth dilution	Boolean (True or False)
Page 8	Other4Carbape	Other agent 4: Differentiation of carbapenemases	Boolean (True or False)
Page 8	Other4Chromo	Other agent 4: Chromogenic method	Boolean (True or False)
Page 8	Other4Agar	Other agent 4: Agar dilution	Boolean (True or False)
Page 8	Other4Blac	Other agent 4: beta-lactamase test	Boolean (True or False)
Page 8	Other4Morpho	Other agent 4: Morphology	Boolean (True or False)
Page 8	Other4Coagul	Other agent 4: Coagulase	Boolean (True or False)
Page 8	Other4Colori	Other agent 4: Colorimetric method (Blue-Carba/ Carba NP)	Boolean (True or False)
Page 8	Other4Micros	Other agent 4: Microscopic characteristic	Boolean (True or False)
Page 8	Other4Dtest	Other agent 4: D-test	Boolean (True or False)
Page 8	Other4Latex	Other agent 4: Latex for PBP2a (MRSA)	Boolean (True or False)
Page 8	Other4IDKit	Other agent 4: ID kits	Boolean (True or False)
Page 8	Other4Oxidase	Other agent 4: Oxidase	Boolean (True or False)
Page 8	Other4PCR	Other agent 4: PCR	Boolean (True or False)
Page 8	Other4OBS	Other agent 4: Observations	Multiline text
Page 8	Other4RTPCR	Other agent 4: RT PCR	Boolean (True or False)
Page 8	Other4Hybri	Other agent 4: Hybridization	Boolean (True or False)
Page 8	Other4Seque	Other agent 4: Sequencing	Boolean (True or False)
Page 8	Other4Whole	Other agent 4: Whole genome sequencing	Boolean (True or False)
Page 9	HaloYN	Disk diffusion method: Halo size registry	Option: Number (0=Yes, 1= No)
Page 9	HaloOBS	Observations: Disk diffusion method: Halo size registry	Multiline text
Page 9	TemConIncubYN	Temperature control: a. incubator	Option: Number (0=Yes, 1= No)

Page 9	TemConIncubOBS	Observations: Temperature control: a. incubator	Multiline text
Page 9	TemConRefrigYN	Temperature control: b. refrigerator	Option: Number (0=Yes, 1= No)
Page 9	TemConRefrigOBS	Observations: Temperature control: b. refrigerator	Multiline text
Page 9	TemConFreezYN	Temperature control: c. freezer	Option: Number (0=Yes, 1= No)
Page 9	TemConFreezOBS	Observations: Temperature control: c. freezer	Multiline text
Page 9	MHLotYN	Mueller Hinton media control: a. lot #	Option: Number (0=Yes, 1= No)
Page 9	MHLotOBS	Observations: Mueller Hinton media control: a. lot #	Multiline text
Page 9	MHDateYN	Mueller Hinton media control: b. date	Option: Number (0=Yes, 1= No)
Page 9	MHDateOBS	Observations: Mueller Hinton media control: b. date	Multiline text
Page 9	MHSteriYN	Mueller Hinton media control: c. sterility control	Option: Number (0=Yes, 1= No)
Page 9	MHSteriOBS	Observations: Mueller Hinton media control: c. sterility control	Multiline text
Page 9	WaterDistillYN	Water: a. distilled	Option: Number (0=Yes, 1= No)
Page 9	WaterDistillOBS	Observations: Water: a. distilled	Multiline text
Page 9	WaterDeminerYN	Water: b. demineralized	Option: Number (0=Yes, 1= No)
Page 9	WaterDeminerOBS	Observations: Water: b. demineralized	Multiline text
Page 9	PHMeterYN	pH of the media: a. pH meter	Option: Number (0=Yes, 1= No)
Page 9	PHMeterOBS	Observations: pH of the media: a. pH meter	Multiline text
Page 9	PHStripYN	pH of the media: b. strip (range available)	Option: Number (0=Yes, 1= No)
Page 9	PHStripOBS	Observations: pH of the media: b. strip (range available)	Multiline text
Page 9	PHBioYN	pH of the media: c. biological	Option: Number (0=Yes, 1= No)
Page 9	PHBioOBS	Observations: pH of the media: c. biological	Multiline text
Page 10	ThickAgarDeterYN	Thickness of the agar: a. Is it determined	Option: Number (0=Yes, 1= No)
Page 10	ThickAgarDeterOBS	Observations: Thickness of the agar: a. Is it determined	Multiline text
Page 10	ThickAgarRanYN	Thickness of the agar: b. evaluate random thickness (2-3 plates)	Option: Number (0=Yes, 1= No)
Page 10	ThickAgarRanOBS	Observations: Thickness of the agar: b. evaluate random thickness (2-3 plates)	Multiline text
Page 10	ThickAgarRecYN	Thickness of the agar: c. records	Option: Number (0=Yes, 1= No)
Page 10	ThickAgarRecOBS	Observations: Thickness of the agar: c. records	Multiline text
Page 10	ThickAgarLvYN	Thickness of the agar: d. perfectly leveled table	Option: Number (0=Yes, 1= No)
Page 10	ThickAgarLvOBS	Observations: Thickness of the agar: d. perfectly leveled table	Multiline text
Page 10	BloodSheepYN	Use of blood: a. sheep	Option: Number (0=Yes, 1= No)
Page 10	BloodSheepOBS	Observations: Use of blood: a. sheep	Multiline text
Page 10	BloodHumanYN	Use of blood: b. human	Option: Number (0=Yes, 1= No)
Page 10	BloodHumanOBS	Observations: Use of blood: b. human	Multiline text
Page 10	ThyAgaSxtYN	Control of thymine/thymidine E. faecalis ATCC 29212 against SXT (check registry)	Option: Number (0=Yes, 1= No)
Page 10	ThyAgaSxtOBS	Observations: Control of thymine/thymidine E. faecalis ATCC 29212 against SXT (check registry)	Multiline text
Page 10	CMZAgaGentaYN	Control of Ca, Mg, and Zn P. aeruginosa ATCC 27853 against gentamicin (check registry)	Option: Number (0=Yes, 1= No)
Page 10	CMZAgaGentaOBS	Observations: Control of Ca, Mg, and Zn P. aeruginosa ATCC 27853 against gentamicin (check registry)	Multiline text
Page 10	QuaDiskExpYN	Quality of the disks/ ATCC strains: a. expiration record	Option: Number (0=Yes, 1= No)
Page 10	QuaDiskExpOBS	Observations: Quality of the disks/ ATCC strains: a. expiration record	Multiline text
Page 10	QuaDiskMaintYN	Quality of the disks/ ATCC strains: b. disks maintenance	Option: Number (0=Yes, 1= No)
Page 10	QuaDiskMaintOBS	Observations: Quality of the disks/ ATCC strains: b. disks maintenance	Multiline text
Page 10	QuaDiskAtccYN	Quality of the disks/ ATCC strains: c. ATCC strains	Option: Number (0=Yes, 1= No)
Page 10	QuaDiskAtccOBS	Observations: Quality of the disks/ ATCC strains: c. ATCC strains	Multiline text
Page 10	QuaDiskAtccWhich	Quality of the disks/ ATCC strains: Specify which ATCC Strains	Multiline text
Page 10	QuaDiskStorYN	Quality of the disks/ ATCC strains: d. correct storage of ATCC strains (check registry)	Option: Number (0=Yes, 1= No)

Page 10	QuaDiskStorOBS	Observations: Quality of the disks/ ATCC strains: d. correct storage of ATCC strains (check registry)	Multiline text
Page 10	QuaDiskFreqOBS	Observations: Quality of the disks/ ATCC strains: frequency of the control (check registry)	Multiline text
Page 10	QuaDiskFreqCon	Quality of the disks/ ATCC strains: e. frequency of the control (check registry)	Drop-down list: Text
Page 10	QuaDiskCorrActYN	Quality of the disks/ ATCC strains: f. corrective actions (check registry)	Option: Number (0=Yes, 1= No)
Page 10	QuaDiskCorrActOBS	Observations: Quality of the disks/ ATCC strains: corrective actions (check registry)	Multiline text
Page 11	McFarAvailYN	McFarland standards: a. available	Option: Number (0=Yes, 1= No)
Page 11	McFarAvailOBS	Observations: McFarland standards: a. available	Multiline text
Page 11	McFarExpYN	McFarland standards: b. Is it expired	Option: Number (0=Yes, 1= No)
Page 11	McFarExpOBS	Observations: McFarland standards: expiration year	Multiline text
Page 11	McFarExpYear	McFarland standards: expiration year	single-line text
Page 11	McFarStorYN	McFarland standards: c. storage	Option: Number (0=Yes, 1= No)
Page 11	McFarStorOBS	Observations: McFarland standards: c. storage	Multiline text
Page 11	InocuAdjManuYN	Inoculum adjustment and control: a. manual	Option: Number (0=Yes, 1= No)
Page 11	InocuAdjManuOBS	Observations: Inoculum adjustment and control: a. manual	Multiline text
Page 11	InocuAdjNephYN	Inoculum adjustment and control: b. nephelometer	Option: Number (0=Yes, 1= No)
Page 11	InocuAdjNephOBS	Observations: Inoculum adjustment and control: b. nephelometer	Multiline text
Page 11	InocuAdjOtherYN	Inoculum adjustment and control: c. other	Option: Number (0=Yes, 1= No)
Page 11	InocuAdjOtherOBS	Observations: Inoculum adjustment and control: c. other	Multiline text
Page 11	NumDiskPpYN	Correct number of disks per plate	Option: Number (0=Yes, 1= No)
Page 11	NumDiskPpOBS	Observations: Correct number of disks per plate	Multiline text
Page 11	CLSIDocYN	CLSI document available	Option: Number (0=Yes, 1= No)
Page 11	CLSIDocOBS	Observations: CLSI document available	Multiline text
Page 11	CLSIDocYear	CLSI Document year	Drop-down list: Text
Page 11	ExSysOnYN	Automated: Expert system is on	Option: Number (0=Yes, 1= No)
Page 11	ExSysOnOBS	Observations: Automated: Expert system is on	Multiline text
Page 11	ExSysPrevYN	Automated: Preventive maintenance	Option: Number (0=Yes, 1= No)
Page 11	ExSysPrevOBS	Observations: Automated: Preventive maintenance	Multiline text
Page 11	ExSysCorrYN	Automated: Corrective maintenance	Option: Number (0=Yes, 1= No)
Page 11	ExSysCorrOBS	Observations: Automated: Corrective maintenance	Multiline text
Page 11	QCIdGramYN	Quality control of identification tests: a. gram	Option: Number (0=Yes, 1= No)
Page 11	QCIdGramOBS	Observations: Quality control of identification tests: a. gram	Multiline text
Page 11	QCIdCataYN	Quality control of identification tests: b. catalase	Option: Number (0=Yes, 1= No)
Page 11	QCIdCataOBS	Observations: Quality control of identification tests: b. catalase	Multiline text
Page 11	QCIdCoaguYN	Quality control of identification tests: c. coagulase	Option: Number (0=Yes, 1= No)
Page 11	QCIdCoaguOBS	Observations: Quality control of identification tests: c. coagulase	Multiline text
Page 12	QCIdOxidYN	Quality control of identification tests: d. oxidase	Option: Number (0=Yes, 1= No)
Page 12	QCIdOxidOBS	Observations: Quality control of identification tests: d. oxidase	Multiline text
Page 12	QCIdHemoYN	Quality control of identification tests: e. hemolysis	Option: Number (0=Yes, 1= No)
Page 12	QCIdHemoOBS	Observations: Quality control of identification tests: e. hemolysis	Multiline text
Page 12	QuaConExpYN	Quality control of panels/cards/ATCC strains: a. expiration registry	Option: Number (0=Yes, 1= No)
Page 12	QuaConExpOBS	Observations: Quality control of panels/cards/ATCC strains: a. expiration registry	Multiline text
Page 12	QuaConStorCardYN	Quality control of panels/cards/ATCC strains: b. correct storage of cards or panels	Option: Number (0=Yes, 1= No)
Page 12	QuaConStorCardOBS	Observations: Quality control of panels/cards/ATCC strains: b. correct storage of cards or panels	Multiline text
Page 12	QuaConAtccYN	Quality control of panels/cards/ATCC strains: c. ATCC strains	Option: Number (0=Yes, 1= No)

Page 12	QuaConAtccOBS	Observations: Quality control of panels/cards/ATCC strains: c. ATCC strains	Multiline text
Page 12	QuaConAtccWhich	Specify which ATCC strains	Multiline text
Page 12	QuaConStorAtccYN	Quality control of panels/cards/ATCC strains: d. correct storage of ATCC strains	Option: Number (0=Yes, 1= No)
Page 12	QuaConStorAtccOBS	Observations: Quality control of panels/cards/ATCC strains: d. correct storage of ATCC strains	Multiline text
Page 12	QuaConFreqOBS	Observations: Quality control of panels/cards/ATCC strains: e. frequency of control	Multiline text
Page 12	QuaConFreq	Quality control of panels/cards/ATCC strains: e. frequency of control	Drop-down list: Text
Page 12	QuaConCorrActYN	Quality control of panels/cards/ATCC strains: f. corrective actions	Option: Number (0=Yes, 1= No)
Page 12	QuaConCorrActOBS	Observations: Quality control of panels/cards/ATCC strains: f. corrective actions	Multiline text
Page 13	EpiPatientIdYN	Availability of clinical/epidemiological data: a. patient identification	Option: Number (0=Yes, 1= No)
Page 13	EpiPatientIdOBS	Observations: Availability of clinical/epidemiological data: a. patient identification	Multiline text
Page 13	EpiAgeYN	Availability of clinical/epidemiological data: b. age	Option: Number (0=Yes, 1= No)
Page 13	EpiAgeOBS	Observations: Availability of clinical/epidemiological data: b. age	Multiline text
Page 13	EpiSexYN	Availability of clinical/epidemiological data: c. sex	Option: Number (0=Yes, 1= No)
Page 13	EpiSexOBS	Observations: Availability of clinical/epidemiological data: c. sex	Multiline text
Page 13	EpiWardYN	Availability of clinical/epidemiological data: d. ward of the sample origin	Option: Number (0=Yes, 1= No)
Page 13	EpiWardOBS	Observations: Availability of clinical/epidemiological data: d. ward of the sample origin	Multiline text
Page 13	EpiSamTypYN	Availability of clinical/epidemiological data: e. type of sample	Option: Number (0=Yes, 1= No)
Page 13	EpiSamTypOBS	Observations: Availability of clinical/epidemiological data: e. type of sample	Multiline text
Page 13	EpiDateHosYN	Availability of clinical/epidemiological data: f. date of hospitalization	Option: Number (0=Yes, 1= No)
Page 13	EpiDateHosOBS	Observations: Availability of clinical/epidemiological data: f. date of hospitalization	Multiline text
Page 13	EpiDateSamYN	Availability of clinical/epidemiological data: g. date of sampling	Option: Number (0=Yes, 1= No)
Page 13	EpiDateSamOBS	Observations: Availability of clinical/epidemiological data: g. date of sampling	Multiline text
Page 13	EpiPurpoSamYN	Availability of clinical/epidemiological data: h. purpose of sampling	Option: Number (0=Yes, 1= No)
Page 13	EpiPurpoSamOBS	Observations: Availability of clinical/epidemiological data: h. purpose of sampling	Multiline text
Page 13	EpiDiagYN	Availability of clinical/epidemiological data: i. diagnosis	Option: Number (0=Yes, 1= No)
Page 13	EpiDiagOBS	Observations: Availability of clinical/epidemiological data: i. diagnosis	Multiline text
Page 13	EpiDiseaseYN	Availability of clinical/epidemiological data: j. underlying disease(s)	Option: Number (0=Yes, 1= No)
Page 13	EpiDiseaseOBS	Observations: Availability of clinical/epidemiological data: j. underlying disease(s)	Multiline text
Page 13	EpiRiskYN	Availability of clinical/epidemiological data:k. risk factor	Option: Number (0=Yes, 1= No)
Page 13	EpiRiskOBS	Observations: Availability of clinical/epidemiological data:k. risk factor	Multiline text
Page 13	EpiDiffInfectYN	Availability of clinical/epidemiological data: l. can differentiate infection / colonization / contamination	Option: Number (0=Yes, 1= No)
Page 13	EpiDiffInfectOBS	Observations: Availability of clinical/epidemiological data: l. can differentiate infection / colonization / contamination	Multiline text

Page 13	SepComInfectYN	Can separate sample results from community acquired infections to those associated with health-care	Option: Number (0=Yes, 1= No)
Page 13	SepComInfectOBS	Observations: Can separate sample results from community acquired infections to those associated with health-care	Multiline text
Page 13	EvaluDeliveryYN	Evaluation of results before delivery	Option: Number (0=Yes, 1= No)
Page 13	EvaluDeliveryOBS	Observations: Evaluation of results before delivery	Multiline text
Page 14	RecDeliveryYN	Record of results delivery	Option: Number (0=Yes, 1= No)
Page 14	RecDeliveryOBS	Observations: Record of results delivery	Multiline text
Page 14	PeriSurvellcuYN	Periodic surveillance reports are sent to various services of the institution: a. ICU	Option: Number (0=Yes, 1= No)
Page 14	PeriSurvellcuOBS	Observations: Periodic surveillance reports are sent to various services of the institution: a. ICU	Multiline text
Page 14	PeriSurvelSurgYN	Periodic surveillance reports are sent to various services of the institution: b. surgery	Option: Number (0=Yes, 1= No)
Page 14	PeriSurvelSurgOBS	Observations: Periodic surveillance reports are sent to various services of the institution: b. surgery	Multiline text
Page 14	PeriSurvelObstYN	Periodic surveillance reports are sent to various services of the institution: c. obstetrics	Option: Number (0=Yes, 1= No)
Page 14	PeriSurvelObstOBS	Observations: Periodic surveillance reports are sent to various services of the institution: c. obstetrics	Multiline text
Page 14	PeriSurvelTrauYN	Periodic surveillance reports are sent to various services of the institution: d. traumatology	Option: Number (0=Yes, 1= No)
Page 14	PeriSurvelTrauOBS	Observations: Periodic surveillance reports are sent to various services of the institution: d. traumatology	Multiline text
Page 14	PeriSurvelOtherYN	Periodic surveillance reports are sent to various services of the institution: e. others	Option: Number (0=Yes, 1= No)
Page 14	PeriSurvelOtherOBS	Observations: Periodic surveillance reports are sent to various services of the institution: e. others	Multiline text
Page 14	Computer	Computer availability	Option: Number (0=Yes, 1= No)
Page 14	ComputerObs	Observations: Computer availability	Multiline text
Page 14	InternetConnYN	Internet connection	Option: Number (0=Yes, 1= No)
Page 14	InternetConnOBS	Observations: Internet connection	Multiline text
Page 14	ResultEQAYN	Results of external quality assurance	Option: Number (0=Yes, 1= No)
Page 14	ResultEQAOBS	Observations: Results of external quality assurance	Multiline text
Page 14	DissemResultYN	Dissemination of results: hospital, community, prevalent species and resistance profiles	Option: Number (0=Yes, 1= No)
Page 14	DissemResultOBS	Observations: Dissemination of results: hospital, community, prevalent species and resistance profiles	Multiline text
Page 14	SamReferYN	Send samples to the reference center	Option: Number (0=Yes, 1= No)
Page 14	SamReferOBS	Observations: Send samples to the reference center	Multiline text
Page 14	ReferAnsYN	Reference center answered	Option: Number (0=Yes, 1= No)
Page 14	ReferAnsOBS	Observations: Reference center answered	Multiline text
Page 14	ReferAnsTime	Reference center answered: Timing	single-line text
Page 14	DataFreqYN	Data are sent nationally	Option: Number (0=Yes, 1= No)
Page 14	DataFreqOBS	Observations: Data are sent nationally	Multiline text
Page 14	DataFreqnum	Data are sent nationally: Frequency	single-line text
Page 14	DataRegionYN	Data are sent regionally	Option: Number (0=Yes, 1= No)
Page 14	DataRegionObs	Observations: Data are sent regionally	Multiline text
Page 14	DataRegionFreq	Data are sent regionally: Frequency	single-line text
Page 14	SurveilSoftOBS	Observations: Surveillance software	Multiline text
Page 14	SurveilSoft	Surveillance software	Drop-down list: Text
Page 14	SurveilSoftWhich	If yes, specify which surveillance software	single-line text
Page 15	DiluTestYN	Perform dilution tests	Option: Number (0=Yes, 1= No)
Page 15	DiluTestMethod	Perform dilution tests: Methods	Multiline text
Page 15	DiluTestMicro	Perform dilution tests: microorganisms	Multiline text
Page 15	DiluTestOBS	Observations: Perform dilution tests	Multiline text
Page 15	MolEpiYN	Conduct molecular epidemiology (confirmation of outbreaks, dissemination of microorganisms, etc.)	Option: Number (0=Yes, 1= No)

Page 15	MolEpiMethod	Conduct molecular epidemiology: methods	Multiline text
Page 15	MolEpiMicro	Conduct molecular epidemiology: microorganisms	Multiline text
Page 15	MolEpiOBS	Observations: Conduct molecular epidemiology	Multiline text
Page 15	PersonEvaluOne	Persons that carried out the evaluation -1	single-line text
Page 15	PersonEvaluTwo	Persons that carried out the evaluation -2	single-line text
Page 15	PersonEvaluThree	Persons that carried out the evaluation -3	single-line text
Page 15	PersonEvaluFour	Persons that carried out the evaluation -4	single-line text
Page 15	GeneralComments	General comments	Multiline text