

## Regional Update EW 45, 2014

Influenza and other respiratory virus  
(November 18, 2014)

## Actualización Regional SE 45, 2014

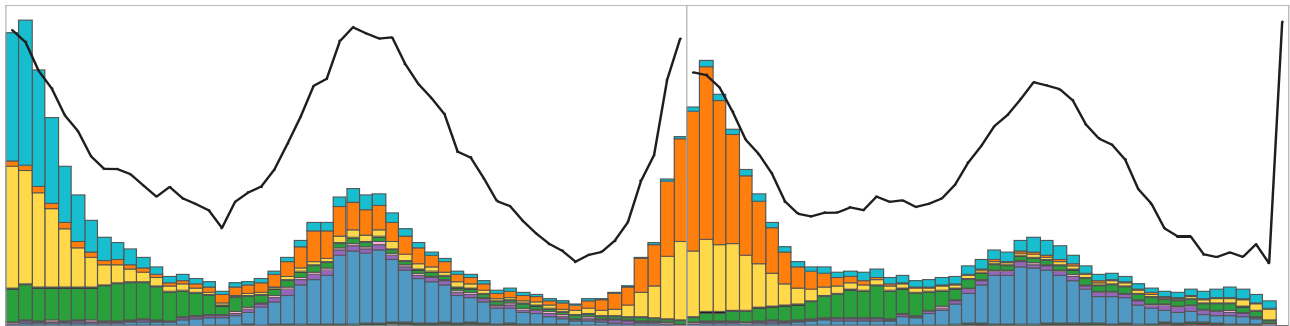
Influenza y otros virus respiratorios  
(18 de noviembre, 2014)

PAHO interactive influenza data  
Datos interactivos de influenza de la OPS:

[http://ais.paho.org/phis/viz/ed\\_flu.asp](http://ais.paho.org/phis/viz/ed_flu.asp)

Influenza Regional Reports:  
Informes regionales de influenza:

[www.paho.org/influenzareports](http://www.paho.org/influenzareports)  
[www.paho.org/reportesinfluenza](http://www.paho.org/reportesinfluenza)



*The information presented in this update is based on data provided by Ministries of Health and National Influenza Centers of Member States to the Pan American Health Organization (PAHO) or from updates on the Member States' Ministry of Health web pages.*

*La información presentada en esta actualización se obtiene a partir de los datos distribuidos por los Ministerios de Salud de los Estados Miembros y de los Centros Nacionales de Influenza de los Estados Miembros de la Organización Panamericana de la Salud (OPS) o de actualizaciones de los Ministerios de Salud de los Estados Miembros en sus páginas web.*

## WEEKLY SUMMARY (ENGLISH)

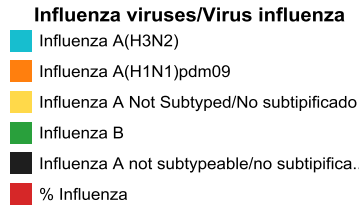
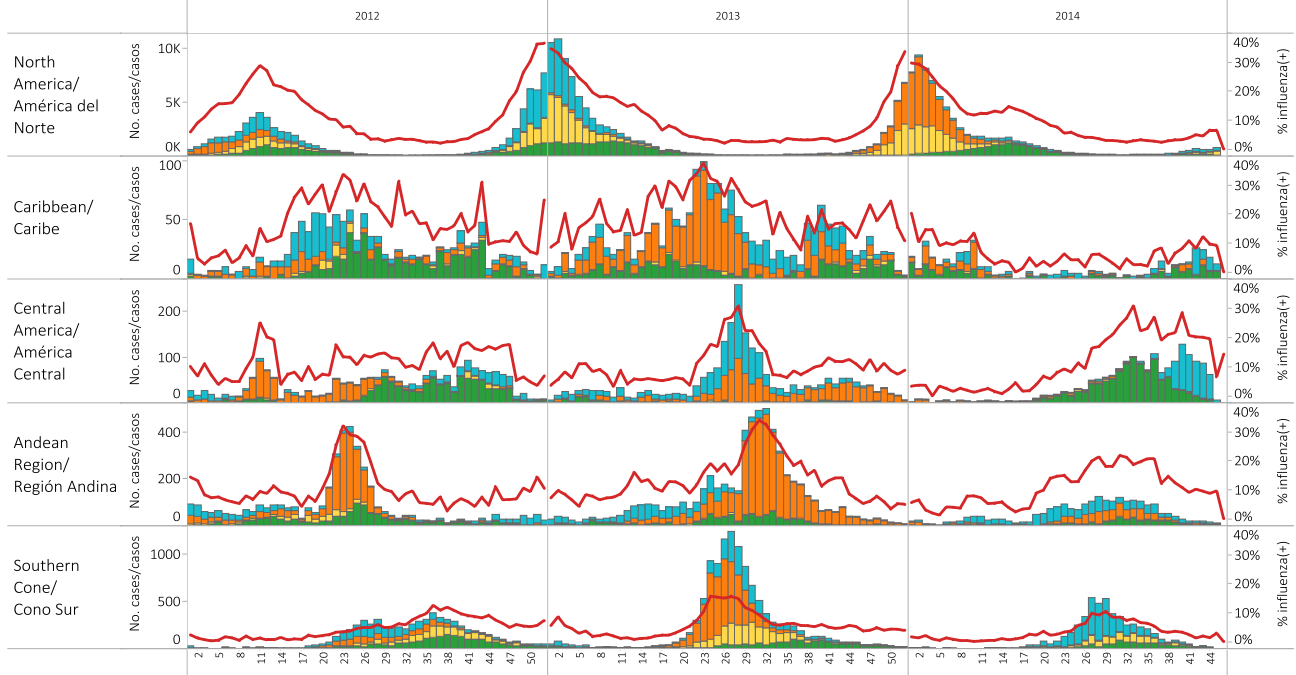
- **North America:** Influenza activity continued to increase slightly but continued to be low. In Canada, ILI activity has been decreasing since epidemiologic week (EW) 44 however has remained above expected levels since EW 35. Influenza detections increased in EW 45 and an increasing trend has been noted since EW 37. Influenza A(H3N2) has predominated among circulating influenza virus. Detections of adenovirus, parainfluenza and RSV have continued to increase since EW 40 and rhinovirus detections have decreased since EW 43. In the United States, ILI activity has remained below the national baseline for the last six weeks. Influenza A (not subtyped) and influenza A(H3) have predominated among the circulating influenza virus and other respiratory virus activity remained within expected levels with an increasing trend of RSV detections since EW 39. From mid-August to November 12, 2014, 1,116 cases of Enterovirus D68 have been confirmed in 47 states and the District of Columbia. In Mexico, ARI activity remained within the endemic channel and the proportions of SARI/ILI consultations remained below 2%. For the last seven weeks, there have been very few influenza detections in the country.
- **Caribbean:** Respiratory virus activity remained low. In Cuba, SARI activity remained elevated however a decreasing trend of respiratory virus detections has been recorded during the last three weeks. In the Dominican Republic, there have been few respiratory virus detections during the last four weeks. In Puerto Rico, ILI activity (as reported to CDC) was reported as moderate after being high in the last week and influenza detections remained low and decreased during the last five weeks. In Saint Lucia, the number of cases of fever and acute respiratory symptoms has been increasing since EW 43. Among respiratory virus, circulation of RSV (Cuba) and adenovirus (Dominican Republic) were observed.
- **Central America:** Respiratory virus activity remained low with the exception of Costa Rica. In Costa Rica, SARI activity remained within expected levels, however respiratory virus detections have been increasing during the last five weeks. In Honduras, SARI/ILI activity remained within expected levels and respiratory virus detections have been decreasing during the last two weeks. In Nicaragua, pneumonia and ARI activity remained within expected levels and respiratory virus detections decreased this week. In Panama, there have been few respiratory virus detections during the last three weeks. Among respiratory virus, circulation of RSV (Costa Rica, Nicaragua) and influenza A(H3N2) (Costa Rica, Honduras, Panama) were observed.
- **Andean Sub-region:** Respiratory virus and ARI activity remained low and within expected levels (Colombia, Peru). In Peru, there have been very few respiratory virus detections in the last five weeks. Among respiratory virus, circulation of RSV (Colombia, Peru) and parainfluenza were observed.
- **Southern Cone:** Respiratory virus activity and SARI/ARI activity have continued to decrease. There have been very few influenza and other respiratory virus detections in the last weeks (Argentina, Brazil, Chile, Paraguay, Uruguay).
- **Globally:** As of EW 44 influenza activity remained low, with the exception of some Pacific Islands. In Africa and western and eastern Asia, influenza activity was low. In tropical Asia, influenza activity was low with influenza B predominant in Viet Nam. In Europe overall influenza activity remained at inter-seasonal levels. In the southern hemisphere, influenza activity remained low except in several Pacific Islands where ILI activity remained high.

## RESUMEN SEMANAL (ESPAÑOL)

- **América del Norte:** La actividad de influenza continúa aumentando ligeramente pero sigue siendo baja. En Canadá, la actividad de ETI ha estado disminuyendo desde la semana epidemiológica (SE) 44, sin embargo permanece por encima de la línea basal desde la SE 35. Las detecciones de influenza aumentaron en la SE 45 y se observa una tendencia creciente desde la SE 37. Influenza A(H3N2) ha predominado entre los virus influenza circulantes. Las detecciones de adenovirus, parainfluenza y VSR continúan aumentando desde la SE 40 y las detecciones de rinovirus continúan disminuyendo desde la SE 43. En los Estados Unidos, desde las últimas seis semanas la actividad de ETI continúa por debajo de la línea basal nacional. Influenza A (no subtipificada) e influenza A(H3) han predominado entre los virus circulantes de influenza y la actividad de otros virus respiratorios se mantiene dentro de niveles esperados, con una tendencia creciente en las detecciones de VSR desde la SE 39. Desde mediados de agosto y al 12 de noviembre 2014, se han confirmado 1.116 casos de Enterovirus D68 en 47 estados y el Distrito de Columbia. En México, la actividad de IRA continúa dentro del canal endémico y las proporciones de consultas por IRAG/ETI se mantienen por debajo del 2%. Durante las últimas siete semanas, han habido muy pocas detecciones de influenza en el país.
- **Caribe:** La actividad de virus respiratorios continúa baja. En Cuba, la actividad de IRAG se mantiene elevada, sin embargo las detecciones de virus respiratorios han disminuido desde las últimas tres semanas. En la República Dominicana, durante las últimas cuatro semanas, han habido muy pocas detecciones de virus respiratorios. En Puerto Rico, la actividad de ETI (de acuerdo al CDC) se reporta como moderada, después de haber estado elevada la semana anterior. Las detecciones de influenza continúan bajas y con tendencia decreciente desde las últimas cinco semanas. En Santa Lucía, el número de casos de fiebre y síntomas respiratorios agudos se ha incrementado desde la SE 43. Entre los virus respiratorios, se observa la circulación de VSR (Cuba) y adenovirus (República Dominicana).
- **América Central:** La actividad de virus respiratorios continúa baja, con la excepción de Costa Rica. En Costa Rica, la actividad de IRAG se mantiene dentro de niveles esperados, sin embargo las detecciones de virus respiratorios se han incrementado desde las últimas cinco semanas. En Honduras, la actividad de ETI/IRAG se mantiene dentro de niveles esperados y las detecciones de virus respiratorios han disminuido desde las últimas dos semanas. En Nicaragua, la actividad de IRA/Neumonía se mantiene dentro de niveles esperados y las detecciones de virus respiratorios disminuyeron esta semana. En Panamá, durante las últimas tres semanas han habido muy pocas detecciones de virus respiratorios. Entre los virus respiratorios, se observa la circulación de VSR (Costa Rica, Nicaragua) e influenza A(H3N2) (Costa Rica, Honduras, Panamá).
- **Sub-región Andina:** La actividad de virus respiratorios e IRA continúa baja y dentro de niveles esperados (Colombia, Perú,). En Perú, han habido muy pocas detecciones de virus respiratorios en las últimas cinco semanas. Entre los virus respiratorios, se observa la circulación de VSR (Colombia, Perú) y parainfluenza.
- **Cono Sur:** La actividad de virus respiratorios y de IRAG/IRA continúa descendiendo. En las últimas semanas, han habido muy pocas detecciones de influenza y otros virus respiratorios (Argentina, Brasil, Chile, Paraguay, Uruguay).
- **Nivel global:** A la SE 44 la actividad de influenza continúa baja, con la excepción de algunas islas del Pacífico. En África, Asia occidental y oriental, la actividad de influenza continúa baja. En Asia tropical, la actividad de influenza continúa baja, con circulación predominante de influenza B en Viet Nam. En Europa, la actividad de influenza en general se mantiene en niveles inter-estacionales. En el hemisferio sur, la actividad de influenza continúa baja, con excepción de varias islas del Pacífico, donde la actividad de ETI continúa alta.

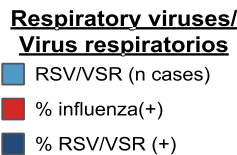
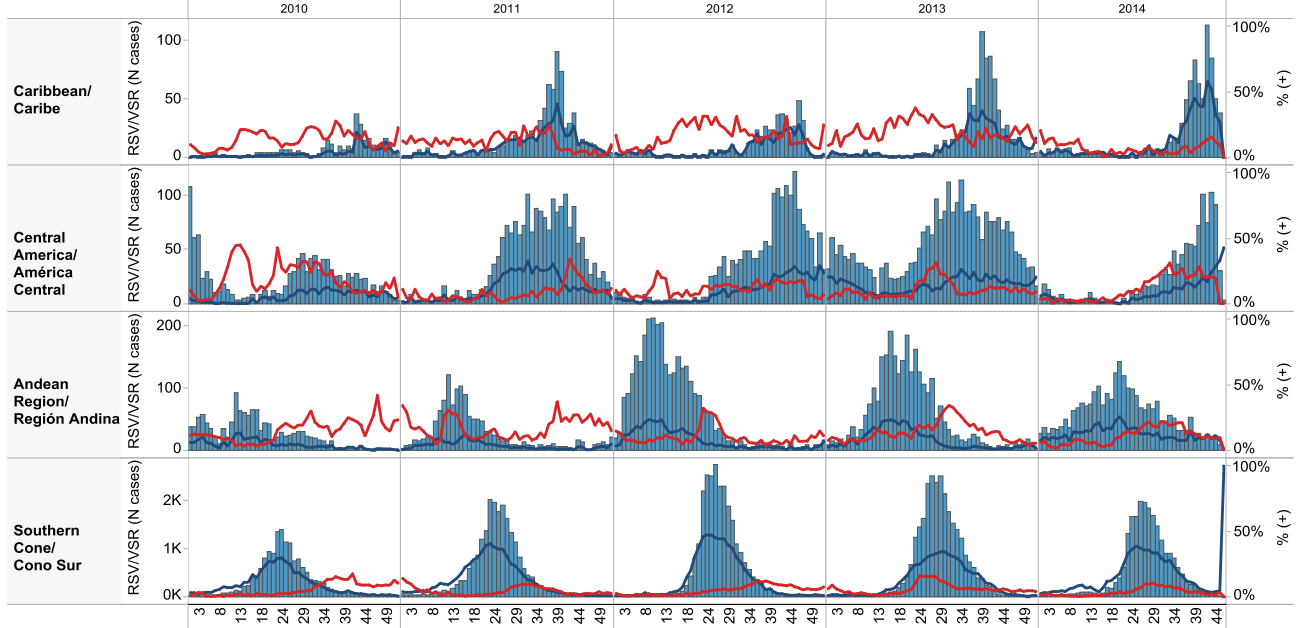
**Influenza circulation by region. 2013-14**

**Circulación virus influenza por región. 2013-14**



**Respiratory syncytial virus (RSV) circulation by region. 2013-14**

**Circulación de virus sincitial respiratorio por región. 2013-14**



Weekly and cumulative numbers of influenza and other respiratory virus, by country and EW, 2014  
 Número semanal y acumulado de influenza y otros virus respiratorios, por país y SE, 2014

		EW 42-45, 2014 / SE 42-45, 2014													
		N samples/muestras	% Positive/Positividad	Influenza A(H3N2)	Influenza A (H1N1)pdm09	Influenza A Not Subtyped/No subtipificado	Influenza B	Adenovirus	Parainfluenza	RSV/RSR	Bocavirus	Coronavirus	Metapneumovirus	Rinovirus	
North America/ América del Norte	Canada	8,772	2.5	136	1	60	26								
	Mexico	1,270	15.9	92	1	6	86	4	4	1					
	United States of America	39,574	5.9	792	15	1,025	513								
Caribbean/ Caribe	Cuba	515	47.8	28	3	0	25	0	15	147	0	3	0	16	
	Dominican Republic	98	21.4	3			4	1	4	9					
	Jamaica	29	3.4	0	0	0	1	0	0	0					
Central America/ América Central	Costa Rica	344	58.7	39	0	0	22	6	2	133					
	El Salvador	136	25.0	1	0	0	0	5	0	28					
	Guatemala	66	31.8	0	0	3	2	0	0	15	0	0	1	0	
	Honduras	43	27.9	9	0	0	0	1	0	2					
	Nicaragua	610	37.4	147			10			71					
Panama	93	91.4	13			0	1		50			4	17		
Andean Region/ Región Andina	Bolivia - INLASA La Paz	85	11.8	1	5		2		1	1					
	Colombia	328	65.5	21	2	3	17	27	41	53	19	4	12	11	
	Ecuador	55	27.3	2	0	0	0	1	7	5					
	Peru	241	14.9	3	3	0	9	1	5	12	0	0	3	0	
Brazil & Southern Cone/ Cono Sur	Argentina	1,906	16.6	1	0	13	10	25	176	41			51		
	Brazil	568	17.3	13	24	0	61								
	Chile	2,134	14.8	3	1		27	59	72	66			87		
	Paraguay	267	21.0	0	0	1	9	5	17	24	0	0	0	0	
	Uruguay	13	30.8	0	0	0	0	0	1	0					
<b>Grand Total</b>		<b>57,147</b>	<b>8.2</b>	<b>1,304</b>	<b>55</b>	<b>1,111</b>	<b>824</b>	<b>136</b>	<b>345</b>	<b>658</b>	<b>19</b>	<b>7</b>	<b>158</b>	<b>44</b>	

		Cumulative, EW 1-45, 2014 / Acumulado, SE 1-45, 2014													
		N samples/muestras	% Positive/Positividad	Influenza A(H3N2)	Influenza A (H1N1)pdm09	Influenza A Not Subtyped/No subtipificado	Influenza B	Adenovirus	Parainfluenza	RSV/RSR	Bocavirus	Coronavirus	Metapneumovirus	Rinovirus	
North America/ América del Norte	Canada	184,078	14	770	8,508	9,550	7,438								
	Mexico	24,917	28	1,015	4,332	269	850	22	9	38					
	United States of America	326,460	13	4,774	18,530	10,688	8,048								
Caribbean/ Caribe	Cuba	2,803	41	35	38	0	98	10	205	349	24	54	8	250	
	Dominican Republic	830	22	24			11	10	53	84					
	Haiti	145	11	10	0	0	6								
Jamaica	418	4	3	1	0	11	0	0	0						
Central America/ América Central	Costa Rica	2,779	31	77	32	0	236	107	101	309					
	El Salvador	1,573	16	4	5	2	55	72	34	72					
	Guatemala	1,155	26	2	10	24	39	15	22	80	0	0	112	0	
	Honduras	1,263	17	23	0	0	126	17	22	27					
	Nicaragua	4,277	26	396	9		565	1	31	105					
Panama	1,562	77	22	37		55	47	197	457			14	368		
Andean Region/ Región Andina	Bolivia - CENETROP Sta..	2,623	29	276	215	0	30	28	44	175					
	Bolivia - INLASA La Paz	1,864	30	194	199		17	15	10	126	3		1		
	Colombia	6,223	42	374	62	3	120	166	428	1,076	119	48	83	77	
	Ecuador	3,145	20	16	21	0	71	37	55	425					
Peru	3,227	34	231	170	0	153	44	55	417	0	0	17	0		
Brazil & Southern Cone/ Cono Sur	Argentina	55,132	35	1,016	16	658	516	421	1,584	14,272			563		
	Brazil	9,700	17	973	337	0	370								
	Chile	36,196	31	1,362	16	179	262	794	1,162	6,826			712		
	Paraguay	4,301	30	213	16	224	107	45	59	458	0	0	157	0	
	Uruguay	820	36	44	0	0	8	10	37	168					
<b>Grand Total</b>		<b>675,491</b>	<b>18</b>	<b>11,854</b>	<b>32,554</b>	<b>21,597</b>	<b>19,192</b>	<b>1,861</b>	<b>4,108</b>	<b>25,464</b>	<b>146</b>	<b>102</b>	<b>1,667</b>	<b>695</b>	

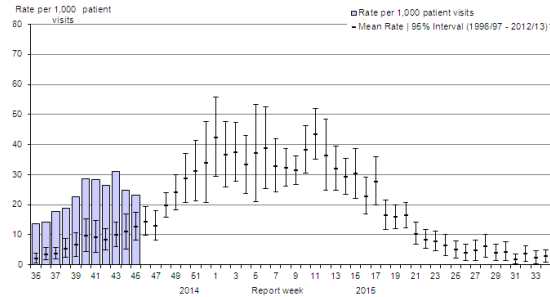
*North America / América del Norte:*

**Canada**

- ILI activity continued above expected levels / La actividad de ETI permanece por encima de los niveles esperados
- Influenza A(H3N2) has predominated among circulating influenza virus / Influenza A(H3N2) predomina entre los virus influenza circulantes
- Detections of rhinovirus increased this year compared to previous years / Las detecciones de rinovirus se incrementaron este año em comparación con año previos

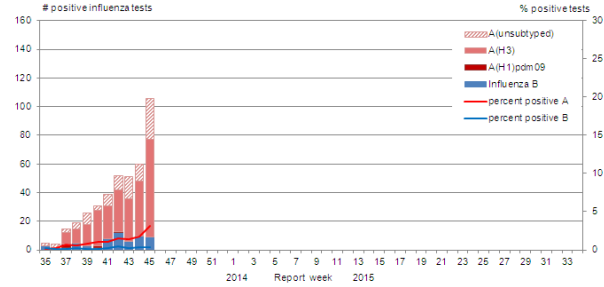
**Canada: ILI Consultation Rates, by EW, 2014-15**  
Tasa de consultas de ETI, por SE, 2014-15

**Figure 5. Influenza-like-illness (ILI) consultation rates by report week, compared to the 1996-97 through to 2012-13 seasons (with pandemic data suppressed), Canada, 2014-2015**



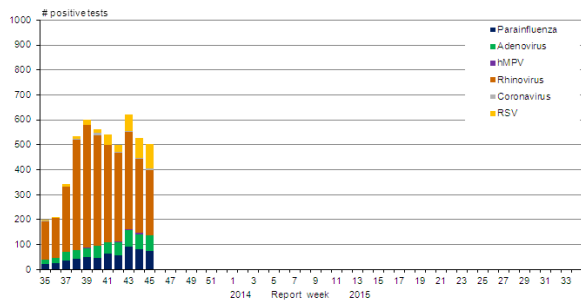
**Canada: Influenza virus distribution by EW, 2014-15**  
Distribución de virus de influenza por SE, 2014 -15

**Figure 2. Number of positive influenza tests and percentage of tests positive, by type, subtype and report week, Canada, 2014-15**



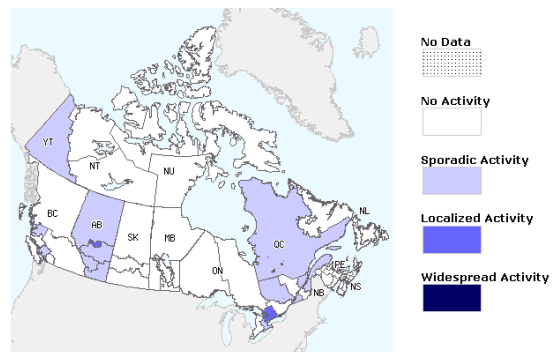
**Canada: Other respiratory virus distribution by EW, 2014-15**  
Distribución de virus respiratorios por SE, 2014 -15

**Figure 3. Number of positive laboratory tests for other respiratory viruses by report week, Canada, 2014-15**



**Canada: Influenza/ILI Activity by region, EW 45, 2014**  
Actividad de Influenza/ETI por provincia & territorio, SE 45, 2014

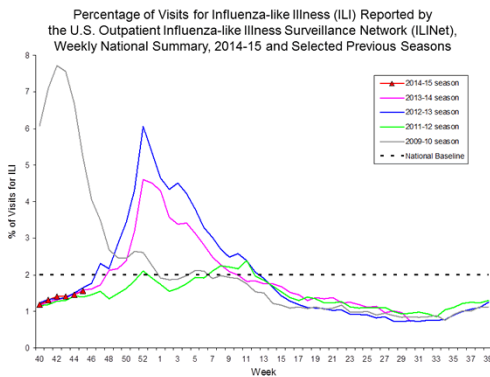
**Figure 1. Map of overall influenza/ILI activity level by province and territory, Canada, Week 45**



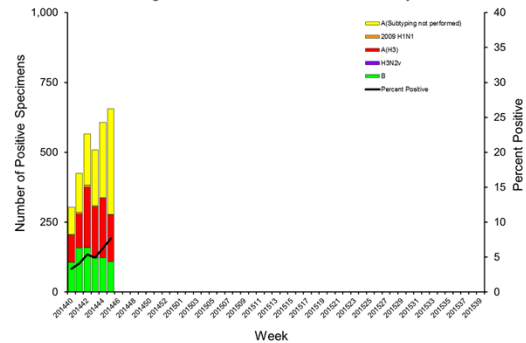
## United States

- ILI activity continued below the national baseline / La actividad de ETI continua por debajo de la línea de base nacional
- Influenza A (not subtyped), influenza A(H3) and influenza B have predominated among circulating influenza virus / Influenza A (no subtipificada), influenza A(H3) e influenza B han predominado entre los virus circulantes de influenza
- RSV detections has been increased since EW 39 / Las detecciones de VSR se han incrementado desde la SE 39
- Pneumonia and influenza mortality continued below the epidemic threshold of 6.2% / La mortalidad por pneumonia e influenza continúan por debajo del umbral epidémico del 6,2%

US: Percent of ILI visits by EW, 2014-15  
Porcentaje de consultas ETI por SE, 2014-15

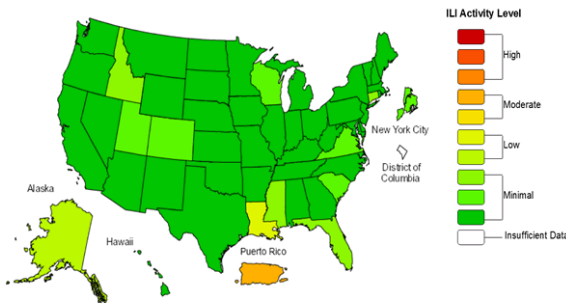


US: Influenza virus distribution by EW, 2014-15  
Distribución de virus de influenza por SE, 2014-15  
Influenza Positive Tests Reported to CDC by U.S. WHO/NREVSS Collaborating Laboratories, National Summary, 2014-15



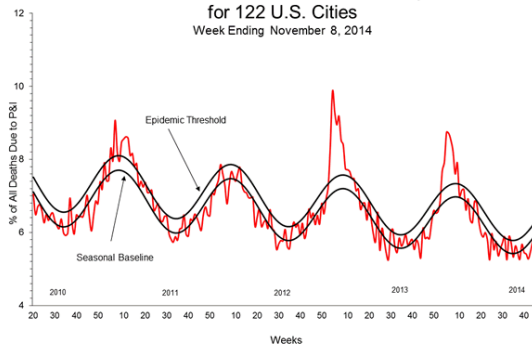
US: ILI activity by state, EW 45, 2014  
Actividad ETI por estado, SE 45, 2014

Influenza-Like Illness (ILI) Activity Level Indicator Determined by Data Reported to ILINet  
2014-15 Influenza Season Week 45 ending Nov 08, 2014



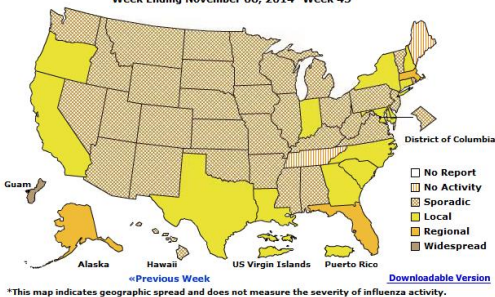
US: Pneumonia and influenza mortality  
Mortalidad por neumonía e influenza

Pneumonia and Influenza Mortality for 122 U.S. Cities  
Week Ending November 8, 2014



US: Weekly influenza activity reported by State and Territory  
Actividad semanal de influenza reportado por estado y territorio

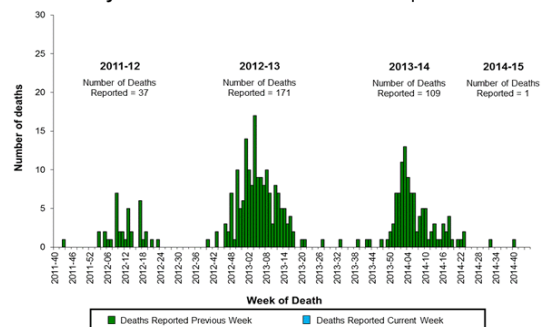
A Weekly Influenza Surveillance Report Prepared by the Influenza Division  
Weekly Influenza Activity Estimates Reported by State and Territorial Epidemiologists\*  
Week Ending November 08, 2014- Week 45



\*This map indicates geographic spread and does not measure the severity of influenza activity.

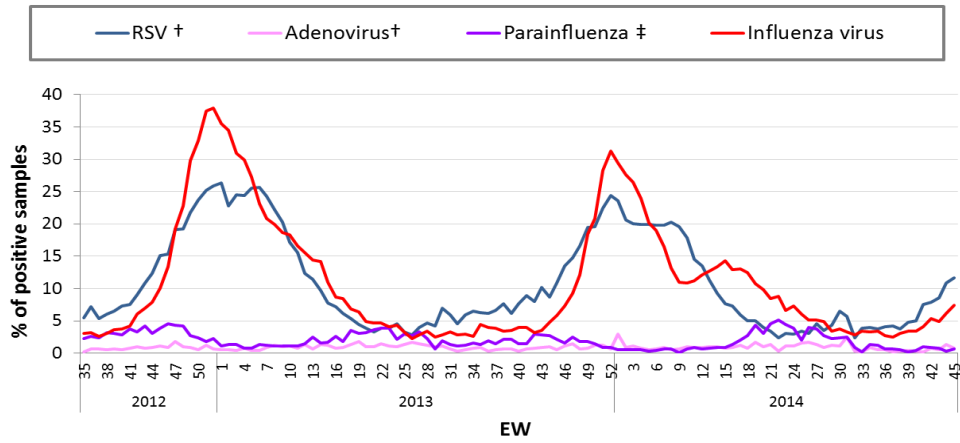
US: Número de fallecidos pediátricos asociados a influenza por semana: 2011 al presente

Number of Influenza-Associated Pediatric Deaths by Week of Death: 2011-12 season to present



US: Percent positivity for respiratory virus under surveillance, by EW, 2012-14  
 Porcentaje de positividad para virus respiratorios en vigilancia, por SE, 2012-14

**Percent Positivity for Respiratory Viruses Under Surveillance\*—  
 United States, 2012/2013 - 2014/2015**



\*For adenovirus, parainfluenza 1,2,3, and RSV, data are from NREVSS Laboratories (<http://www.cdc.gov/surveillance/nrevss/>); for influenza, data are from U.S. WHO/NREVSS Collaborating Laboratories (<http://www.cdc.gov/flu/weekly/>)

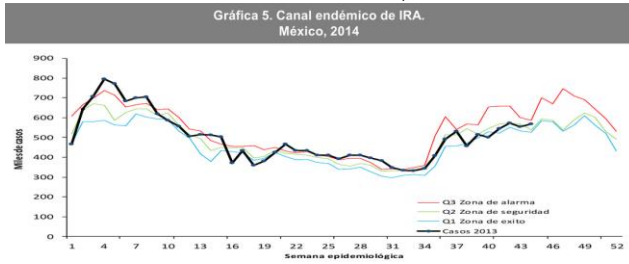
†Antigen detection is reported

‡Percent positive of Parainfluenza aggregates the % of positive samples from parainfluenza type 1, type 2 and type 3. Assuming that each samples were tested for the 3 sub-types.

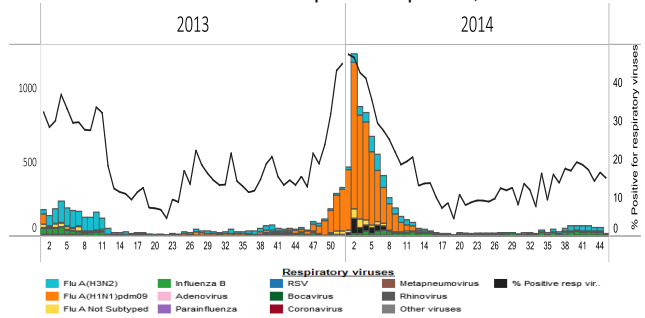


- SARI/ILI consultations remained below 2% / Las consultas de IRAG/ETI se mantienen por debajo del 2%
- ARI activity within the endemic channel / La actividad de IRA esta dentro del canal endémico
- Very few influenza detections with predominated influenza A(H3N2) circulation in the last five EW / Muy pocas detecciones de influenza con predominio de circulación de influenza A(H3N2) en las últimas cinco SE

Mexico: ARI Endemic Channel, 2014  
Canal Endémico de IRA, 2014



Mexico: Respiratory virus distribution by EW 2013-14  
Distribución de virus respiratorios por SE, 2013-14



Mexico: Proportion of ILI / SARI visits, EW 46, 2014  
Proporción de consultas por ETI / IRAG, SE46, 2014

Figura 1. Proporción de consultas por ETI/IRAG en USMI según entidad federativa. México, 2014

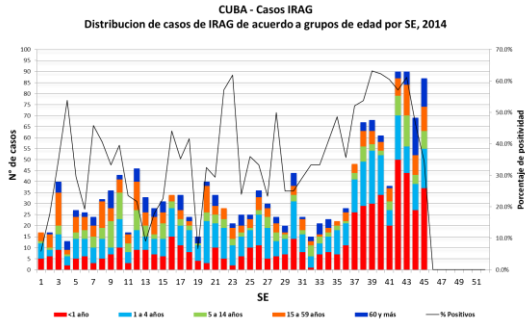
**0.8% consultas por ETI/IRAG en USMI**



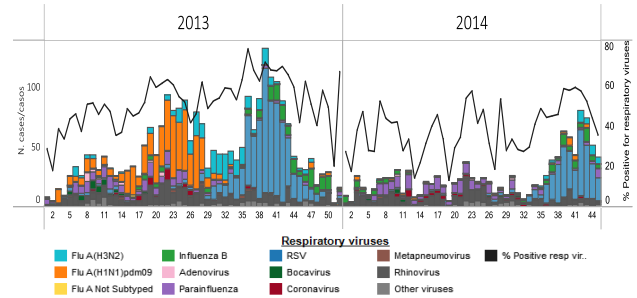
Cuba

- SARI activity remained elevated / La actividad de IRAG se mantiene elevada
- RSV has predominated among circulating virus / Entre los virus respiratorios, predomina la circulación de VSR

Cuba: SARI cases by age group, by EW, 2013-14  
Casos IRAG por grupos de edad por SE, 2013-14



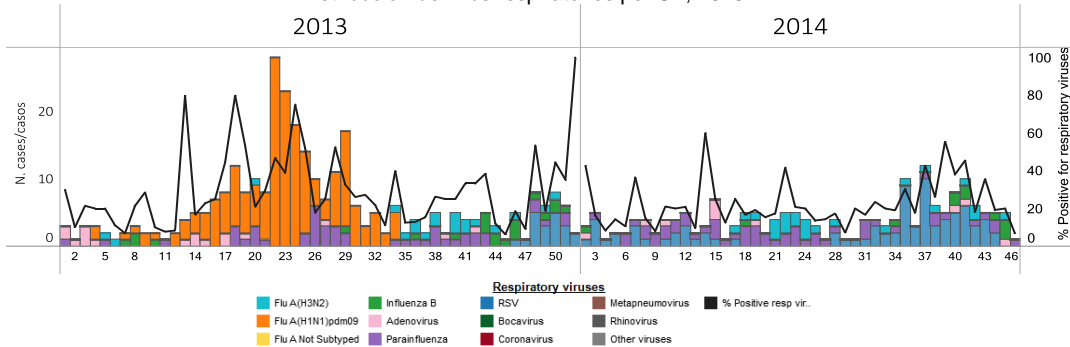
Cuba: Respiratory virus distribution by EW, 2013-14  
Distribución de virus respiratorios por SE, 2013-14



Dominican Republic / República Dominicana

- RSV has predominated among circulating virus / Entre los virus respiratorios, predomina la circulación de VSR

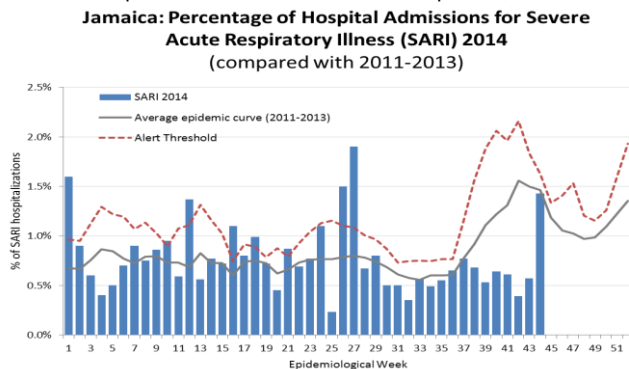
Dominican Republic: Respiratory virus distribution by EW, 2013-14  
Distribución de virus respiratorios por SE, 2013-14



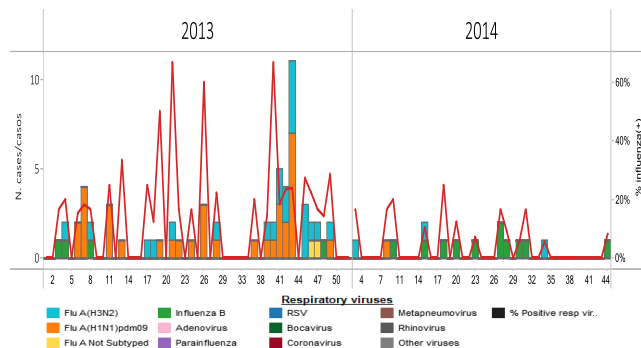
Jamaica

- SARI hospitalizations within expected levels / Las hospitalizaciones de IRAG en niveles esperados
- Very few influenza detections with predominated influenza B circulation / Muy pocas detecciones de influenza con predominio de circulación de influenza B

Jamaica: % SARI-related hospitalizations, by EW, 2014  
% Hospitalizaciones asociadas a IRAG por SE, 2014



Jamaica: Influenza virus distribution, by EW, 2013-14  
Distribución de virus influenza. por SE, 2013-14

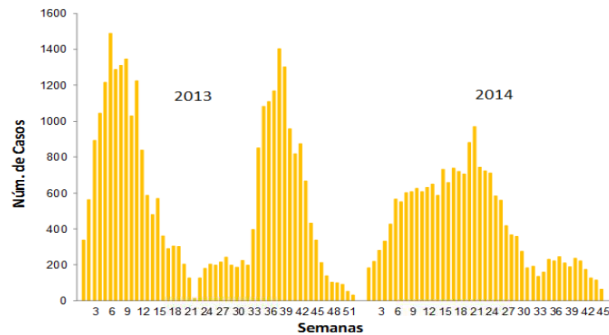


## Puerto Rico

- Variable influenza activity / Actividad de influenza variable
- Influenza detections low and decreasing / Detecciones de influenza bajas y en descenso

Puerto Rico: Influenza-positive cases by EW, 2013-14  
Casos positivos a influenza por SE, 2013-14

GRÁFICA 1. Número de Casos Positivos a Influenza por Semanas, Puerto Rico 2013-2014

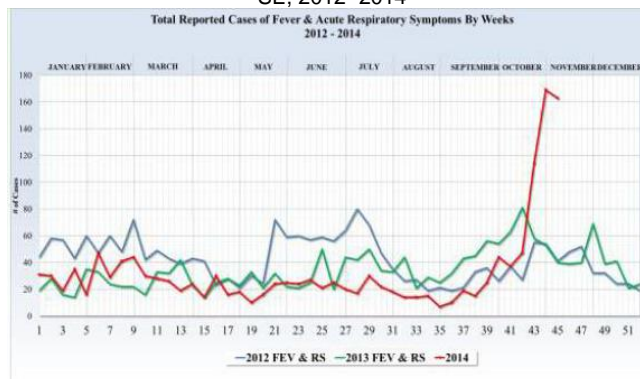


Datos actualizados hasta el 8 de noviembre de 2014  
N (año 2013) = 32,162  
N (año 2014) = 19,730

## Saint Lucia

- Increasing trend of cases with fever and acute respiratory symptoms since EW 43

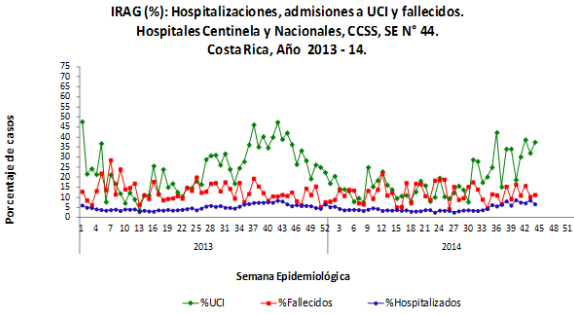
Total de casos reportados de fiebre y síntomas respiratorios agudos, por SE, 2012- 2014



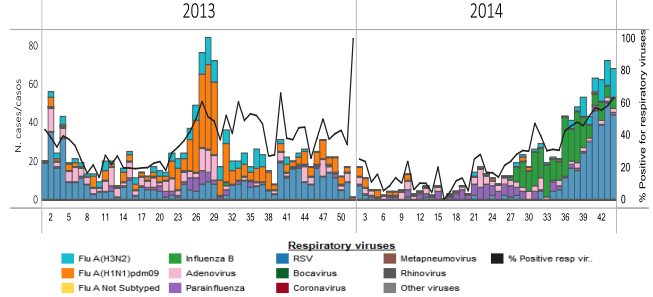
Costa Rica

- SARI activity within expected levels / Actividad de IRAG dentro de niveles esperados
- RSV has predominated among circulating virus / Entre los virus respiratorios, predomina la circulación de VSR
- Influenza A(H3N2) detections has been increased since EW 43 / Las detecciones de influenza A(H3N2) se han incrementado desde la SE 43

Costa Rica: Proportion of SARI-Associated Hospitalizations, ICU Admissions and Deaths, by EW, 2013-14



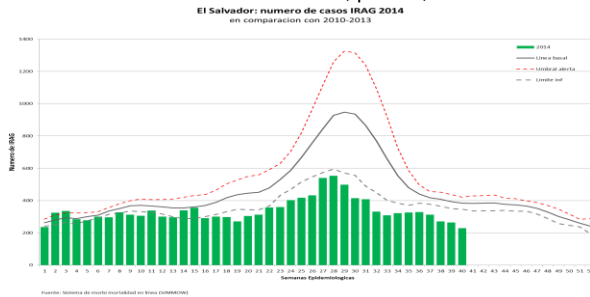
Costa Rica: Respiratory virus distribution, by EW, 2013-14



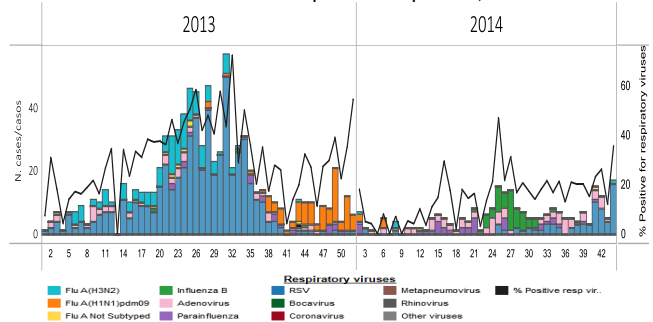
El Salvador

- SARI activity within expected levels / Actividad de IRAG dentro de niveles esperados
- RSV has predominated among circulating virus / Entre los virus respiratorios, predomina la circulación de VSR

El Salvador: Number of SARI cases, by EW, 2014



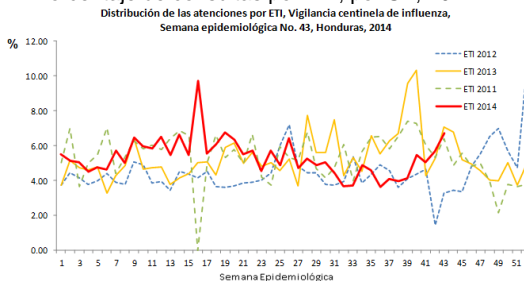
El Salvador: Respiratory virus distribution, by EW, 2013-14



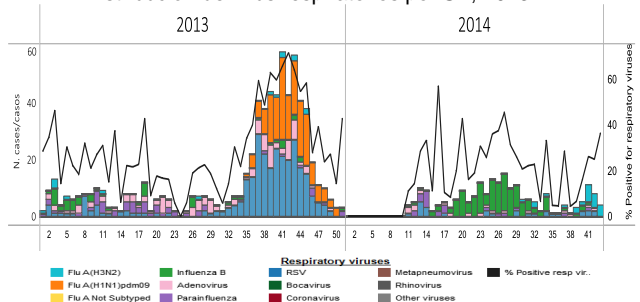
Honduras

- ILI / SARI activity within expected levels / Actividad de ETI/IRAG dentro de niveles esperados
- Very few respiratory virus detections with predominated influenza A(H3N2) / Muy pocas detecciones de virus respiratorios con predominio de influenza A(H3N2)

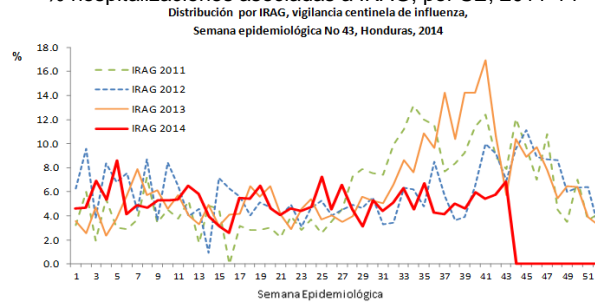
Honduras: Percent of Visits that are ILI by EW, 2011-14



Honduras: Respiratory virus distribution by EW, 2013-14



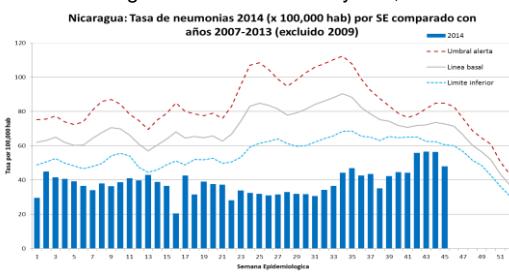
Honduras: % SARI-associated hospitalizations, by EW, 2011-14  
 % hospitalizaciones asociadas a IRAG, por SE, 2011-14



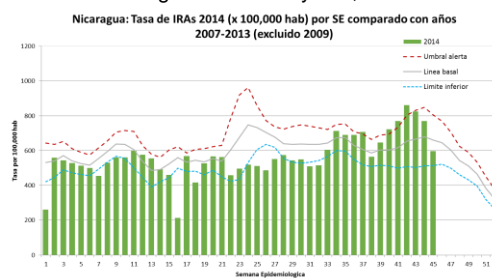
Nicaragua

- ARI activity remained within expected levels / Actividad de IRA dentro de niveles esperados
- Influenza A(H3N2) predominated circulation with increasing detections of RSV since EW 43 / Predominio de circulación de influenza A(H3N2) con incremento en las detecciones de VSR desde la SE 43

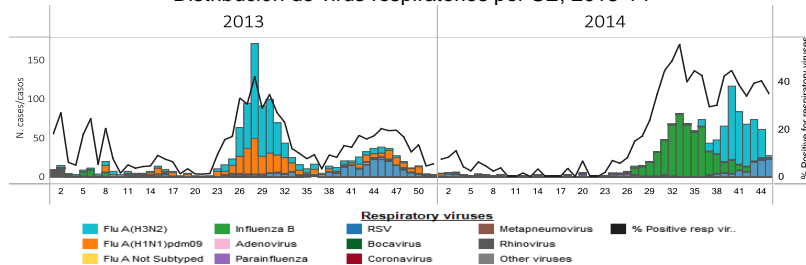
Nicaragua: Pneumonia rate by EW, 2014



Nicaragua: ARI rate by EW, 2014



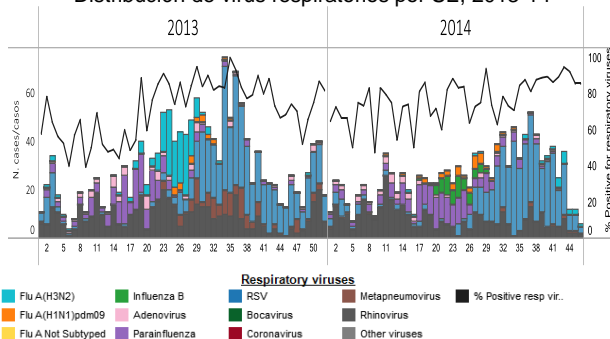
Nicaragua: Respiratory virus distribution by EW, 2013-14  
 Distribución de virus respiratorios por SE, 2013-14



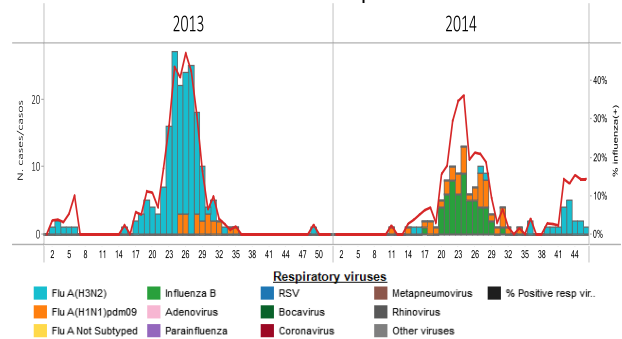
Panama

- Few respiratory virus detections since the last three weeks / Pocas detecciones de virus Respiratorios en las tres últimas semanas
- RSV has predominated among circulating virus / Entre los virus respiratorios, predomina la circulación de VSR

Panama: Respiratory virus distribution by EW, 2013-14  
 Distribución de virus respiratorios por SE, 2013-14

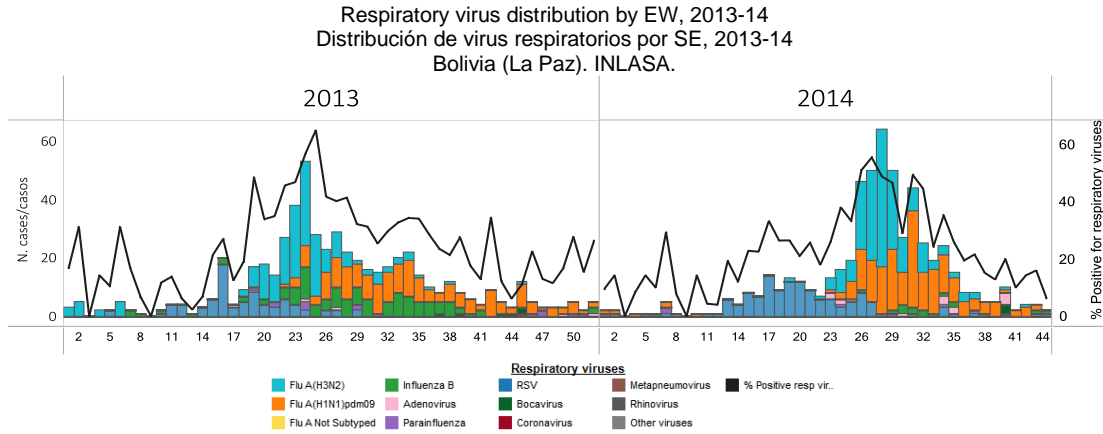


Panama. Influenza virus distribution by EW, 2013-14  
 Distribución de influenza por SE 2013-14



**Bolivia**

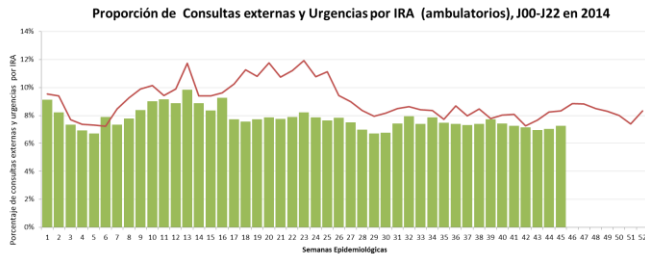
- Low respiratory virus activity with very few respiratory virus detections in the last four weeks / Actividad baja de virus respiratorios, con muy pocas detecciones de virus respiratorios en las últimas cuatro semanas



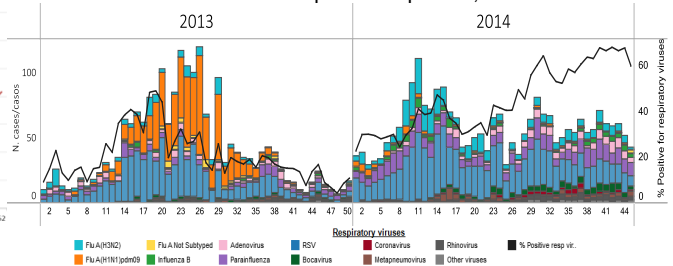
**Colombia**

- ARI activity within expected levels / Actividad de IRA dentro de niveles esperados
- RSV and parainfluenza have predominated among circulating virus/ Entre los virus respiratorios, ha predominado la circulación de VSR y parainfluenza

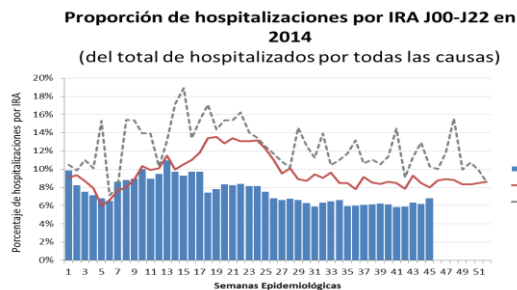
Colombia: ARI outpatient visits with J00-J20 codes, by EW, 2014



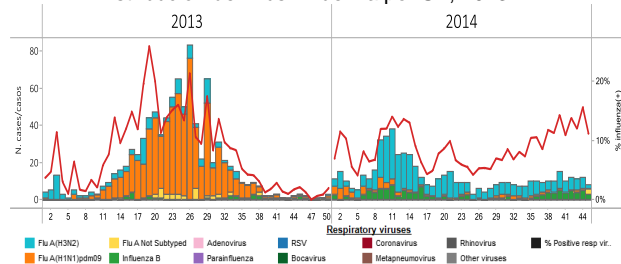
Colombia: Respiratory virus distribution by EW, 2013-14  
Distribución de virus respiratorios por SE, 2013-14



Colombia: % Hospitalizations with J00 to J20 codes, by EW 2014

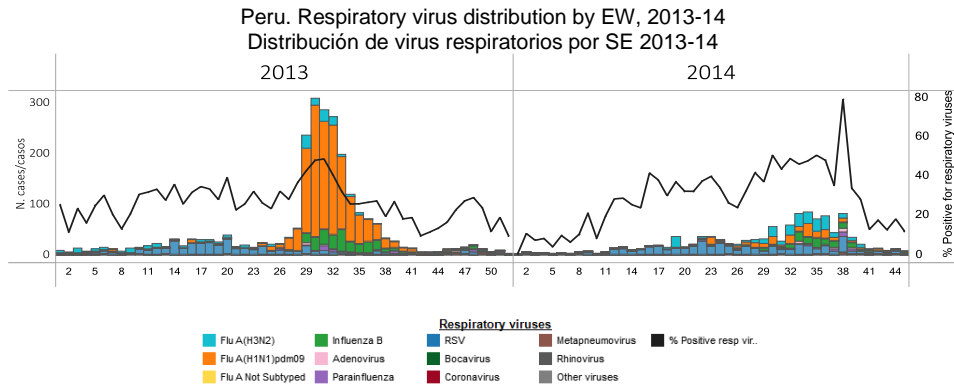


Colombia. Influenza virus distribution by EW, 2013-14  
Distribución de virus influenza por SE, 2013-14



## Peru

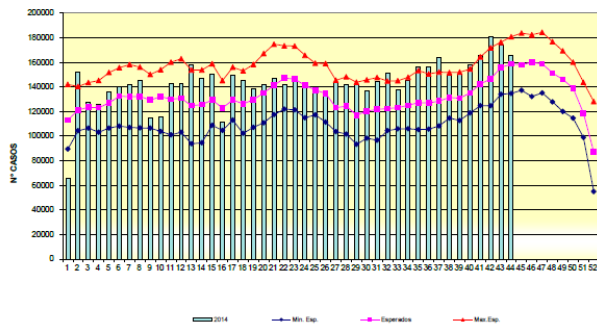
- Very few respiratory virus detections in the last six weeks with predominated RSV / Muy pocas detecciones de virus respiratorios en las últimas seis semanas, con predominio de VSR



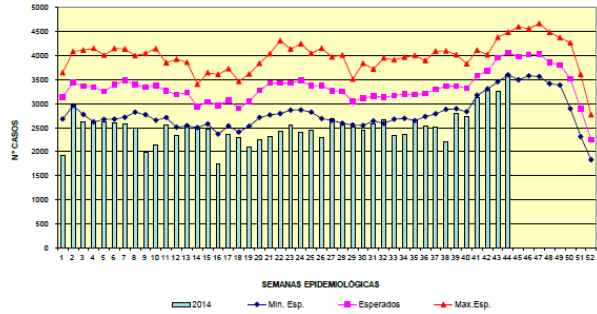
## Venezuela

- ARI / Pneumonia activity within expected levels / Actividad de IRA/Pneumonia en niveles esperados

Venezuela: ARI endemic channel, 2006-2014  
Canal endémico de IRA, 2006-2014  
**Infecciones respiratorias agudas**  
Canal endémico 2006 - 2014  
República Bolivariana de Venezuela, 2014



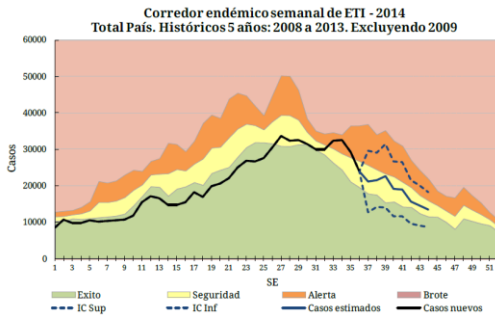
Venezuela: Pneumonia endemic channel, 2006-2014  
Canal endémico de Neumonías, 2006-2014  
**Neumonías**  
Canal endémico 2006 - 2014  
República Bolivariana de Venezuela 2014



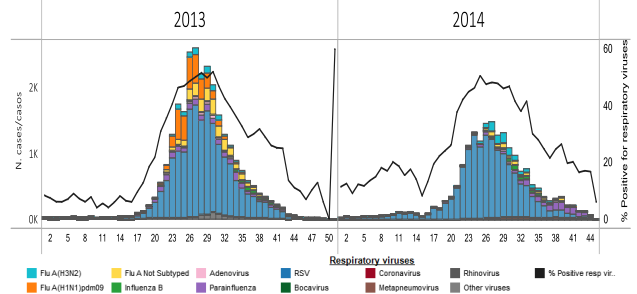
Argentina

- ILI / SARI activity within expected levels / Actividad de ETI/IRAG dentro de niveles esperados
- Downward trend of respiratory virus activity / Tendencia decreciente de actividad viral respiratoria

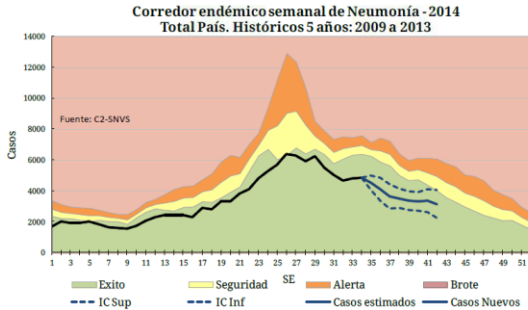
Argentina. ILI cases. Endemic channel, 2014



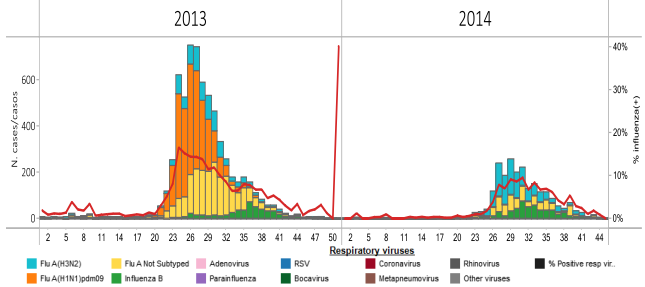
Argentina. Respiratory virus distribution by EW, 2013-14



Argentina. SARI cases. Endemic channel, 2014



Argentina. Influenza virus distribution by EW, 2014

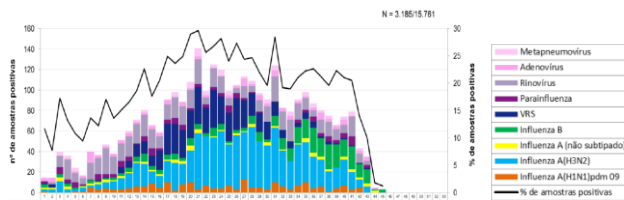


Brazil

- ILI / SARI activity within expected levels / Actividad de ETI/IRAG dentro de niveles esperados
- Downward trend of respiratory virus activity / Tendencia decreciente de actividad viral respiratoria

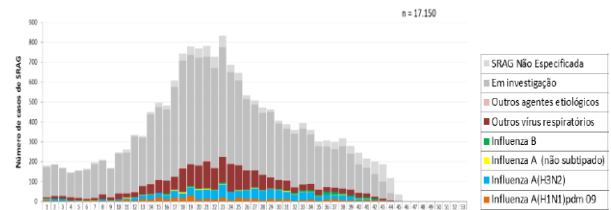
Brazil: Respiratory virus distribution in ILI cases, by EW, 2014

Distribuição de vírus respiratórios em casos ETI, por SE, 2014  
Figura 1. Distribuição dos vírus respiratórios identificados nas unidades sentinelas de Síndrome Gripal, por semana epidemiológica de início dos sintomas. Brasil, 2014 até a SE 45.



Brazil: Respiratory virus distribution, SARI cases, by EW, 2014

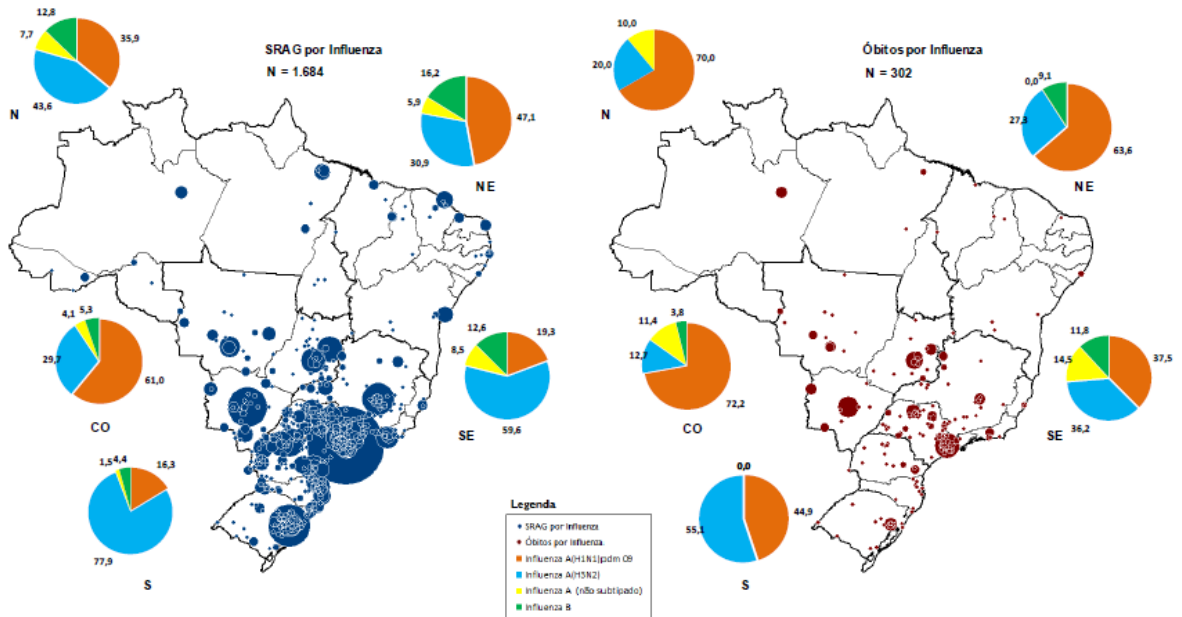
Distribuição de vírus respiratórios, casos IRAG, por SE, 2014  
Figura 3. Distribuição dos casos de Síndrome Respiratória Aguda Grave segundo agente etiológico e semana epidemiológica do início dos sintomas. Brasil, 2014 até a SE 45.





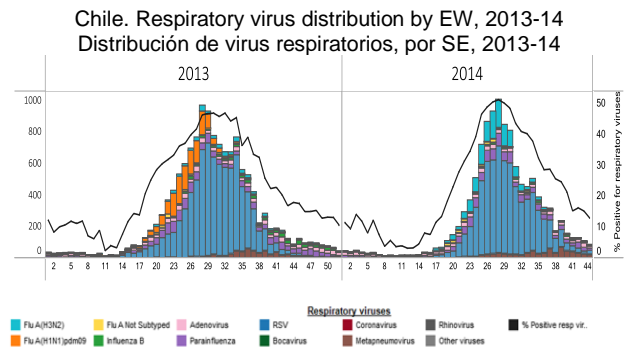
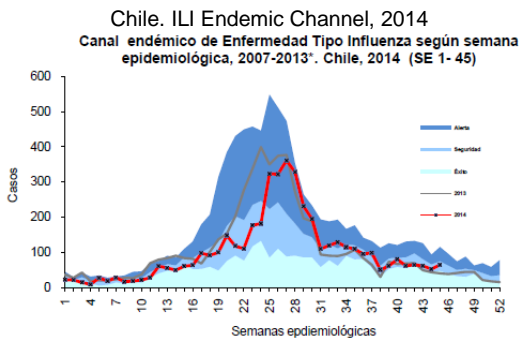
Brazil: Distribution of SARI hospitalizations and deaths by municipality and influenza type/subtype by region  
 Distribución de hospitalizaciones y fallecidos por IRAG por municipio y tipo/subtipo de influenza por región

Anexo 4. Distribuição espacial dos casos e óbitos por Síndrome Respiratória Aguda Grave confirmados para influenza por município de residência e percentual dos vírus influenza identificados por região. Brasil, 2014 até a SE 45.

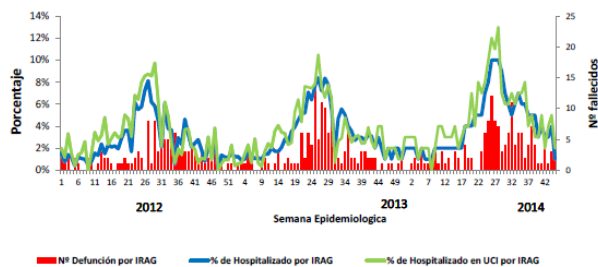


Chile

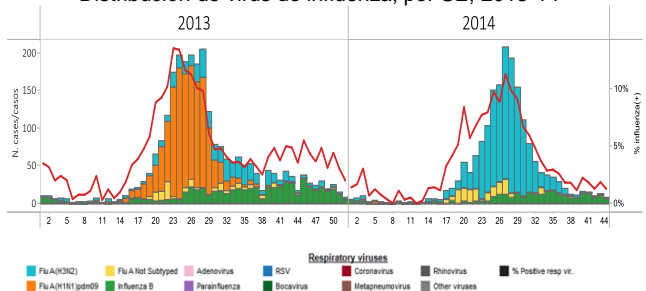
- ILI / SARI activity within expected levels and with an downward trend / Actividad de ETI/IRAG dentro de niveles esperados y en tendencia decreciente
- Few respiratory virus detections in the last four weeks with predominated adenovirus / Pocas detecciones de virus respiratorios en las últimas cuatro semanas con predominio de adenovirus



Chile. % SARI hospitalizations, ICU Adm and Deaths, 2012-14  
 Porcentaje de hospitalizados, ingreso a UCI y número de fallecidos por IRAG según SE en Hospitales Centinela. Chile, 2012 - 2014 (\*).



Chile: Influenza virus distribution by EW, 2013-14  
 Distribución de virus de influenza, por SE, 2013-14

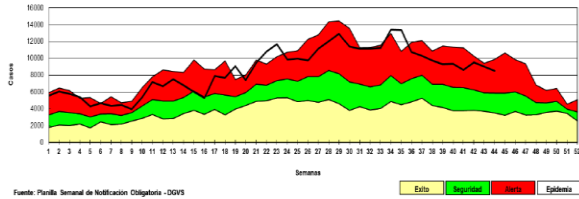


## Paraguay

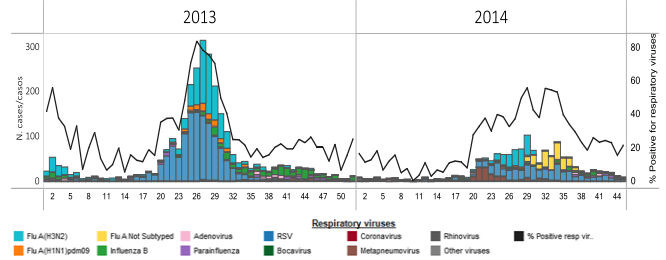
- ILI / SARI activity within expected levels / Actividad de ETI/IRAG dentro de niveles esperados
- Downward trend of respiratory virus detections with predominated RSV / Tendencia decreciente en las detecciones de virus respiratorios con predominio de VSR

Paraguay. ILI endemic channel, by EW, 2014  
Canal endémico de ETI por SE, 2014

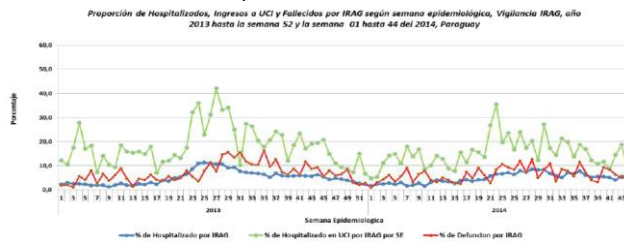
Canal endémico de ETI en población total según semana epidemiológica  
Paraguay, 2014 (Semana Epidemiológica N° 44)



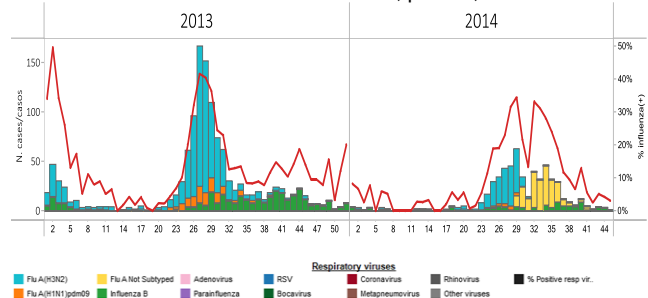
Paraguay. Respiratory virus distribution by EW, 2013-14  
Distribución de virus respiratorios por SE, 2013-14



Paraguay: % SARI Hospitalizations, ICU Admissions & Deaths by EW 2013-14  
Casos IRAG. Hospitalizaciones e ingresos en UCI & fallecidos (%) por SE, 2013-14



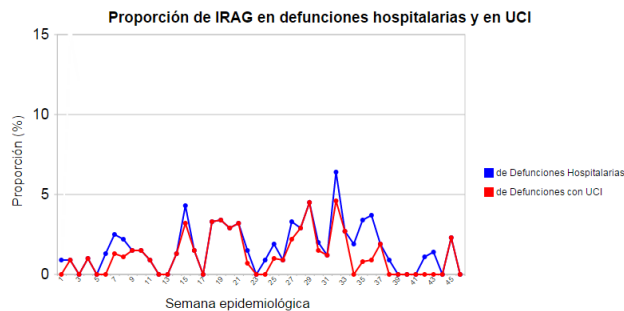
Paraguay: Influenza virus distribution by EW, 2013-14  
Distribución de virus de influenza, por SE, 2013-14



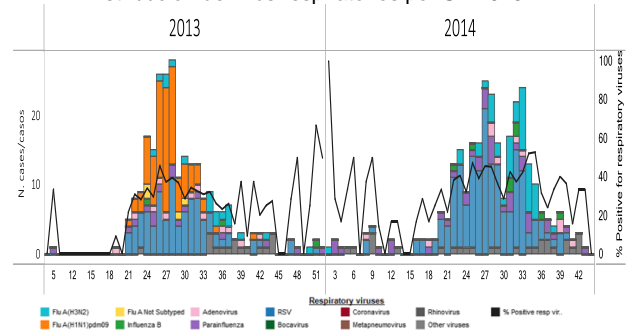
## Uruguay

- SARI activity within expected levels / Actividad de IRAG dentro de niveles esperados
- Downward trend of respiratory virus detections / Tendencia decreciente en las detecciones de virus respiratorios

Uruguay: % SARI-associated hospitalizations & ICU admissions by EW, 2014



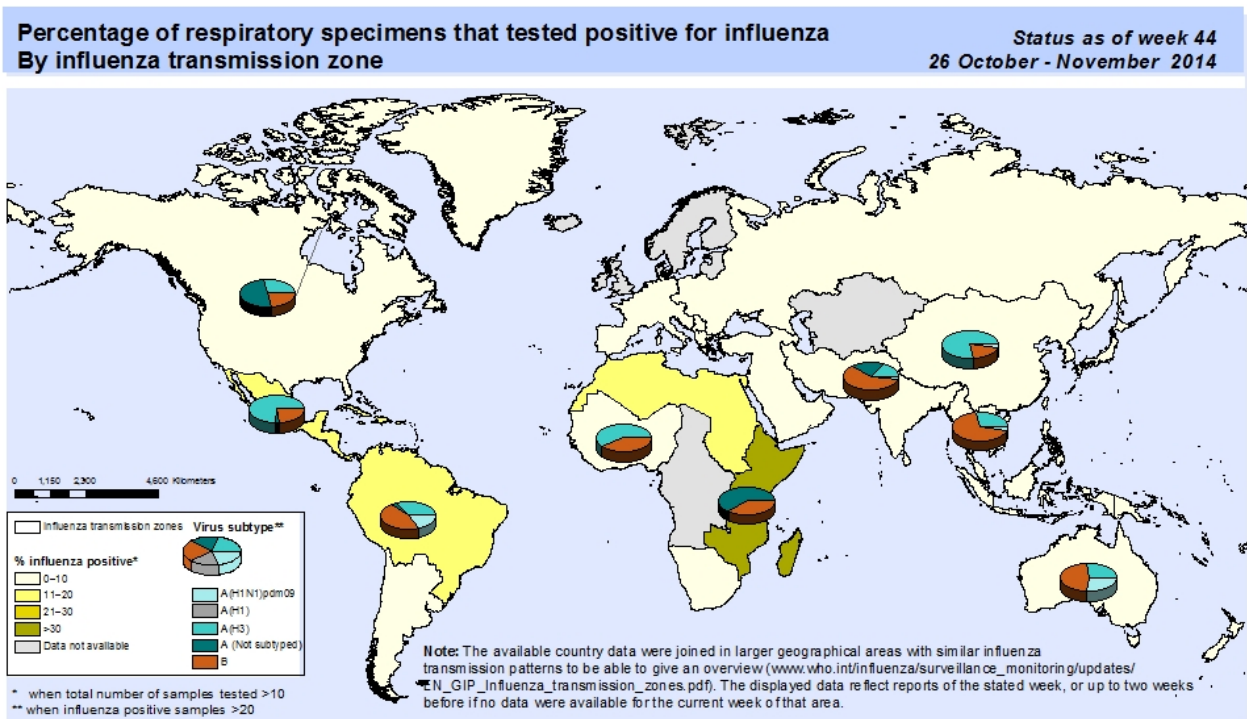
Uruguay: Respiratory virus distribution by EW, 2013-14  
Distribución de virus respiratorios por SE 2013-14



## Influenza global update / Actualización de influenza a nivel global

- Globally, as of EW 44 influenza activity remained low, with the exception of some Pacific Islands / A nivel global, a la SE 44 la actividad de influenza continua baja, con la excepción de algunas islas del Pacífico.
- The WHO GISRS laboratories tested more than 44,937 specimens; 1,978 were positive for influenza virus, of which 1,434 (72.5%) were typed as influenza A and 544 (27.5%) as influenza B. Of the sub-typed influenza A viruses, 60 (6.9%) were influenza A(H1N1)pdm09 and 813 (93.1%) were influenza A(H3N2). Of the characterized B viruses, 87 (96.7%) belonged to the B-Yamagata lineage and 3 (3.3%) to the B-Victoria lineage. / Los laboratorios del sistema de vigilancia global de influenza y respuesta (GISRS) de la OMS realizaron pruebas a más de 44.937 muestras: 1.978 fueron positivas a influenza, de las cuales 1.434 (72.5%) se tipificaron como influenza A y 544 (27.5%) como influenza B. De los virus sub-tipificados de influenza A, 60 (6.9%) fueron influenza A(H1N1)pdm09 y 813 (93.1%) influenza A(H3N2). De los virus influenza B caracterizados, 87 (96.7%) pertenecían al linaje B-Yamagata y 3 (3.3%) al linaje B-Victoria.

Nivel global: Porcentaje de muestras respiratorias positivas a influenza por zona de transmisión de influenza, SE 44, 2014



The boundaries and names shown and the designations used on this map do not imply the expression of any opinion whatsoever on the part of the World Health Organization concerning the legal status of any country, territory, city or area or of its authorities, or concerning the delimitation of its frontiers or boundaries. Dotted and dashed lines on maps represent approximate border lines for which there may not yet be full agreement.

Data Source: WHO/GIP, data in HQ as of 22 August 2014.  
Data used are from FluNet ([www.who.int/fluNet](http://www.who.int/fluNet)), 06:15 UTC snapshot, from WHO regional offices and/or ministry of health websites.

## ACRONYMS

<b>ARI</b>	Acute respiratory infection
<b>CARPHA</b>	Caribbean Public Health Agency
<b>CENETROP</b>	Centro de Enfermedades Tropicales (Santa Cruz, Bolivia)
<b>EW</b>	Epidemiological Week
<b>ILI</b>	Influenza-like illness
<b>INLASA</b>	Instituto Nacional de Laboratorios de Salud (La Paz, Bolivia)
<b>INS</b>	Instituto Nacional de Salud
<b>ORV</b>	Other respiratory viruses
<b>SARI</b>	Severe acute respiratory infection
<b>SEDES</b>	Servicio Departamental de Salud (Bolivia)
<b>ICU</b>	Intensive Care Unit
<b>RSV</b>	Respiratory Syncytial Virus

## ACRÓNIMOS

<b>CARPHA</b>	Caribbean Public Health Agency
<b>CENETROP</b>	Centro de Enfermedades Tropicales (Santa Cruz, Bolivia)
<b>ETI</b>	Enfermedad tipo influenza
<b>INLASA</b>	Instituto Nacional de Laboratorios de Salud (La Paz, Bolivia)
<b>INS</b>	Instituto Nacional de Salud
<b>IRA</b>	Infección respiratoria aguda
<b>IRAG</b>	Infección respiratoria aguda grave
<b>OVR</b>	Otros virus respiratorios
<b>SE</b>	Semana epidemiológica
<b>SEDES</b>	Servicio Departamental de Salud (Bolivia)
<b>UCI</b>	Unidad de Cuidados Intensivos
<b>VSR</b>	Virus sincitial respiratorio