



Regional Update EW 16, 2013

Influenza and other respiratory viruses

(April 30, 2013)

PAHO interactive influenza data: http://ais.paho.org/phis/viz/ed_flu.asp

Influenza Regional Reports: www.paho.org/influenzareports

The information presented in this update is based on data provided by Ministries of Health and National Influenza Centers of Member States to the Pan American Health Organization (PAHO) or from updates on the Member States' Ministry of Health web pages.

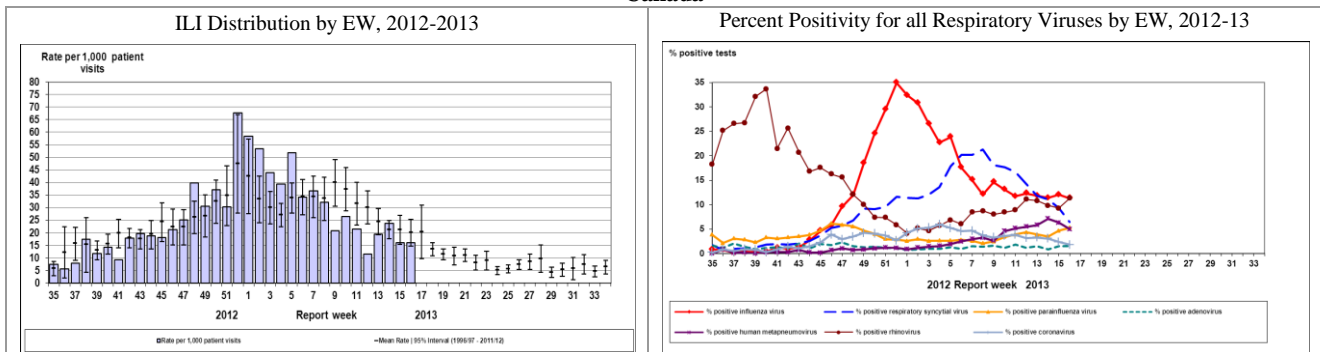
WEEKLY SUMMARY

- North America:** in Canada and the US, most influenza activity indicators were within the expected levels for this time of year. Influenza B continued to increase and remained the dominant circulating influenza virus in Canada and in the US. In Mexico, influenza activity decreased and influenza A (H3N2) remained the most prevalent influenza virus.
- Central America and the Caribbean:** influenza activity remained low in this sub-region. Guatemala, Panama and Honduras showed a similar pattern with the co-circulation of RSV as the predominant virus, followed by parainfluenza and adenovirus. There was low circulation of influenza A(H1N1)pdm09, influenza A (H3N2) and influenza B, mainly in Nicaragua. In the Caribbean activity was similar to previous weeks. In this sub-region influenza A(H1N1) pdm09 was the predominant virus circulating (Cuba, Jamaica, Trinidad and Tobago, Dominican Republic, St. Vincent and the Grenadines and St. Lucia), followed by adenovirus, parainfluenza and rhinovirus.
- South America:** ARI activity was within normal limits for this time of year, with an increasing trend in most countries. In the Andean region, RSV continued to prevail except in Ecuador where RSV and influenza A (H3N2) co-circulated. In the Southern Cone RSV also prevailed; in Brazil, among SARI cases, influenza A (H1N1) pdm09

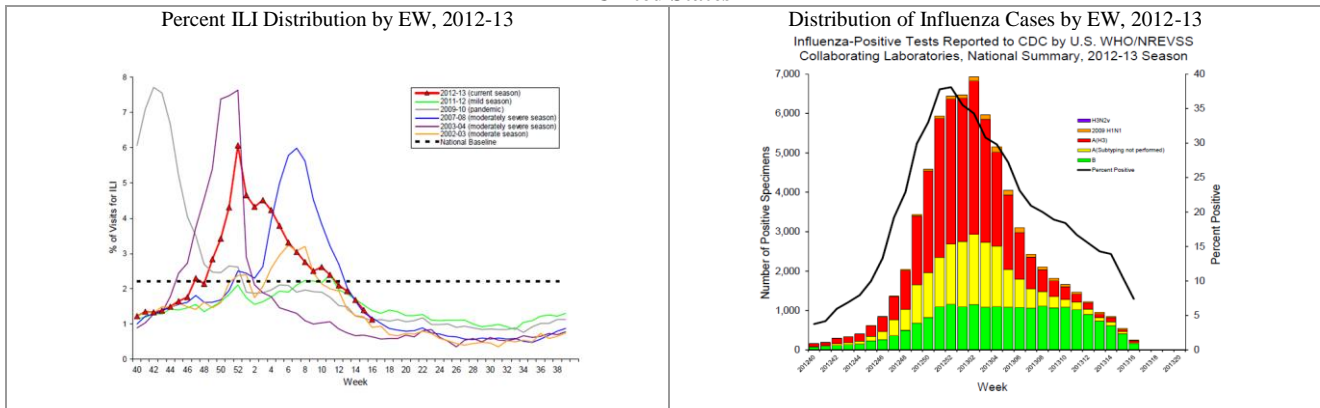
EPIDEMIOLOGIC AND VIROLOGIC UPDATE OF INFLUENZA & OTHER RESPIRATORY VIRUSES BY COUNTRY

North America:

Canada

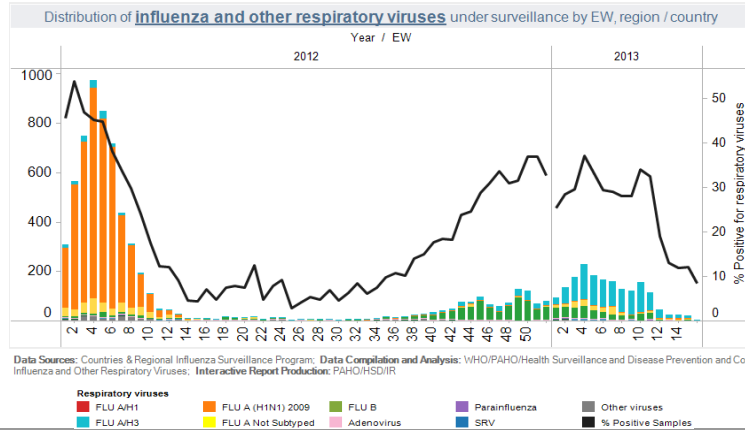


United States



México

Distribution of Influenza Cases by EW, 2012 -13

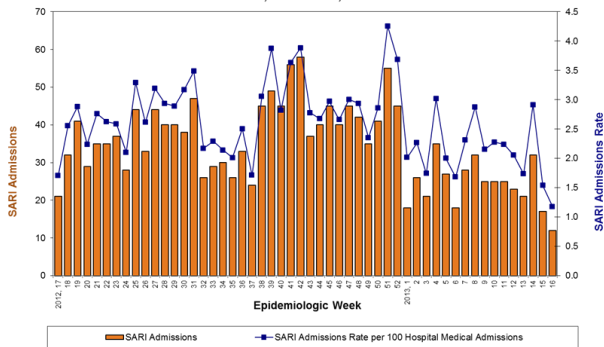


Caribbean

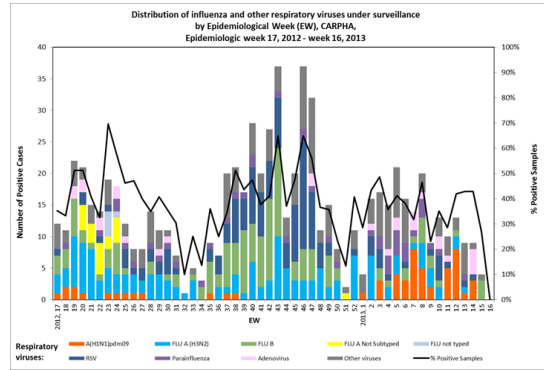
CARPHA

CARPHA. %SARI Cases by EW, 2012-13

SARI Admissions and SARI Admissions Rate per 100 Hospital Medical Admissions from Sentinel Sites in Select CARPHA Member Countries*, EW 17, 2012 - EW 16, 2013



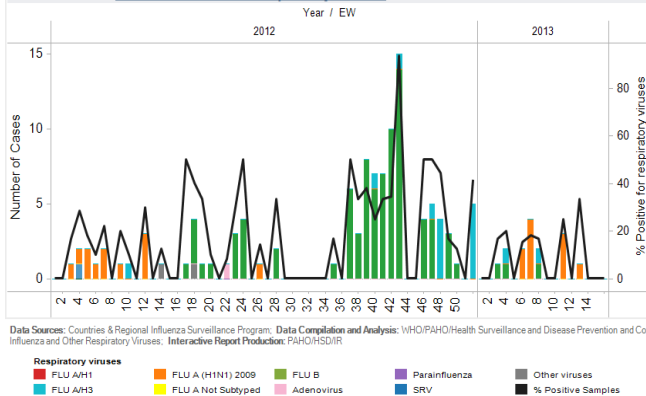
CARPHA. Distribution of Respiratory Viruses by EW, 2012-13



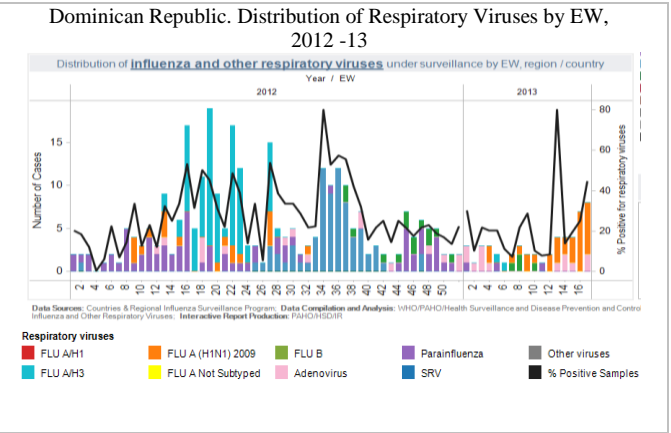
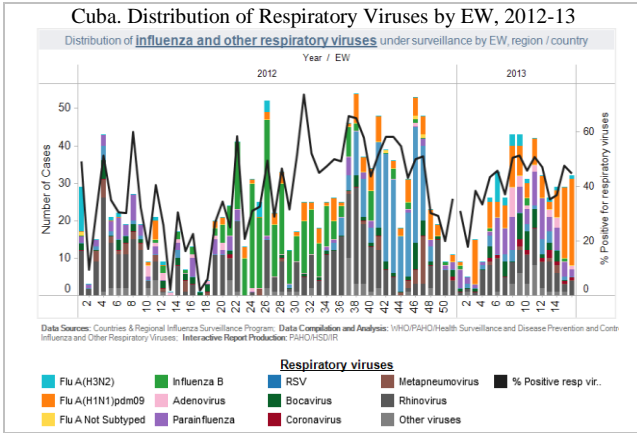
Jamaica

Jamaica. Distribution of Respiratory Viruses by EW, 2012-13

Distribution of influenza and other respiratory viruses under surveillance by EW, region / country

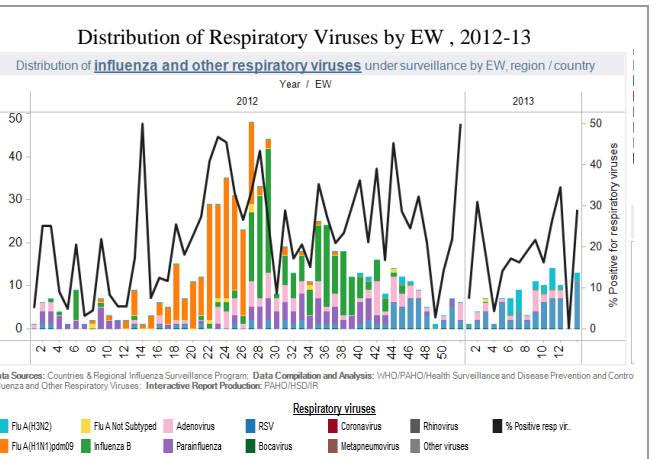
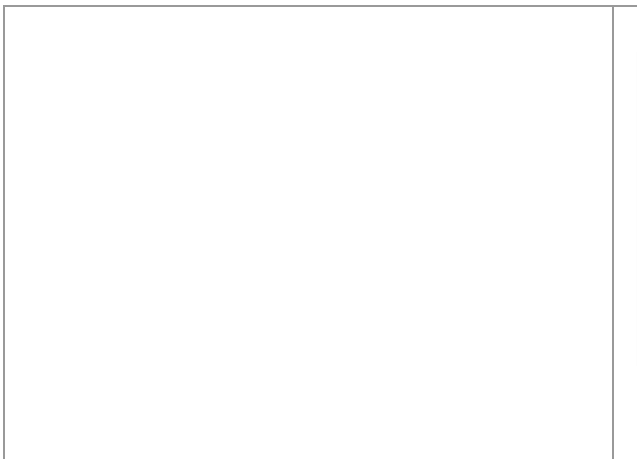


Cuba and Dominican Republic

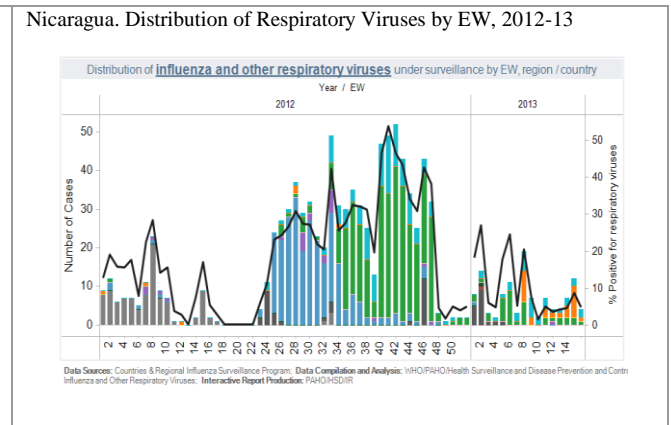
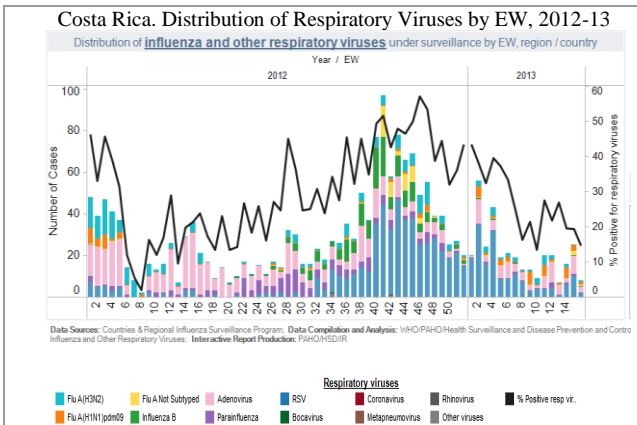


Central America

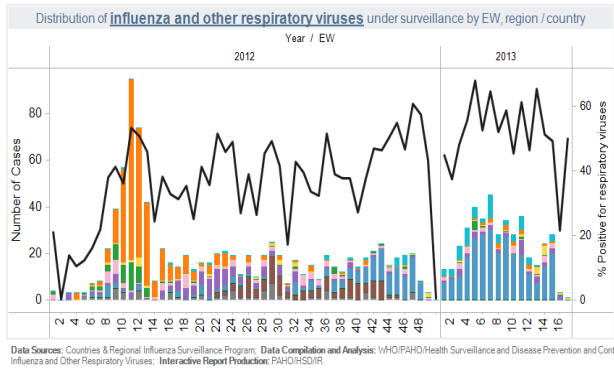
El Salvador



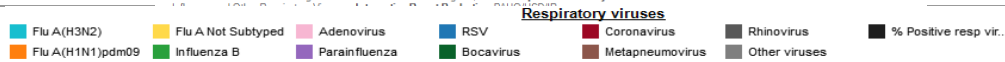
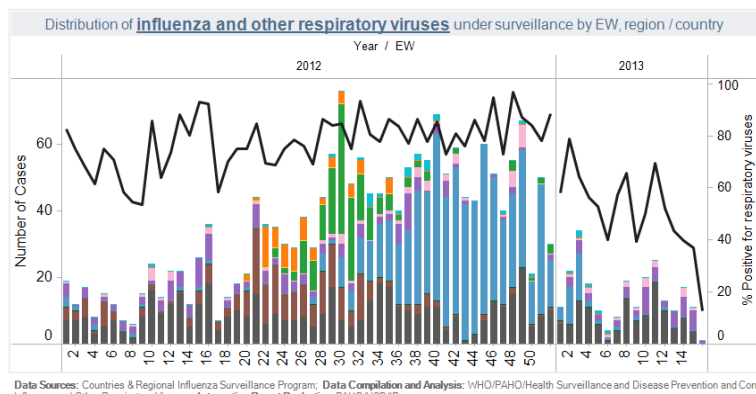
Costa Rica, Honduras, Guatemala, Nicaragua and Panamá



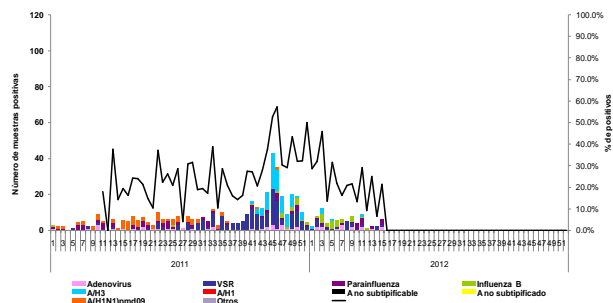
Guatemala. Distribution of Respiratory Viruses by EW, 2012-13



Panama. Distribution of Respiratory Viruses by EW, 2012-13

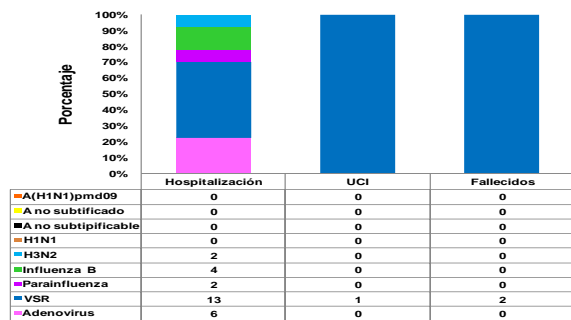


Honduras: Distribution of Respiratory Viruses by EW, SARI Sentinel Surveillance. Honduras, EW No. 1- 52, 2012 y SE 1-15, 2013



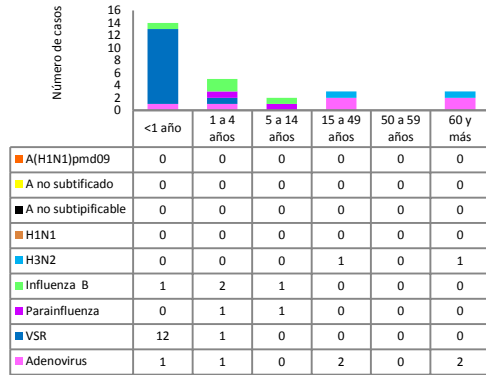
El comportamiento viral durante la SE 15 del año 2012 fue dominado por el virus de influenza A(H1N1)pdm09 con 83% (5/6), una positividad viral de 19%(7/36); mientras que en la misma semana epidemiológica del año 2013 el predominio fue por el virus parainfluenza con 50% (3/6) y una positividad de 21%(7/23).

Honduras: Distribution of Respiratory Viruses by Severity, SARI Sentinel Surveillance. Honduras, EW No. 1-15, 2013



Se observa que durante la SE 15 el VSR ha predominado en los pacientes hospitalizados con 48% (13/27) y en los admitidos a UCI y fallecidos en el 100%

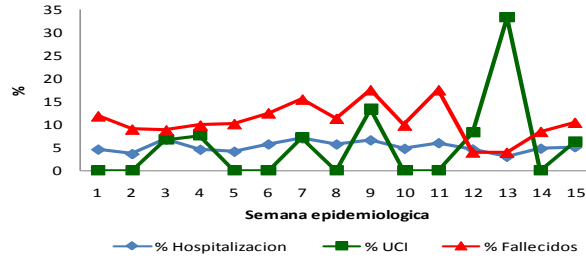
Honduras: Distribution of Respiratory Viruses by Age Group, Sentinel SARI Surveillance, EW No1- 15, Honduras, 2013



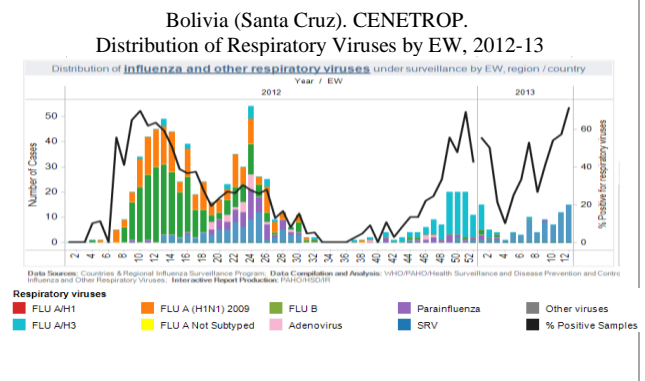
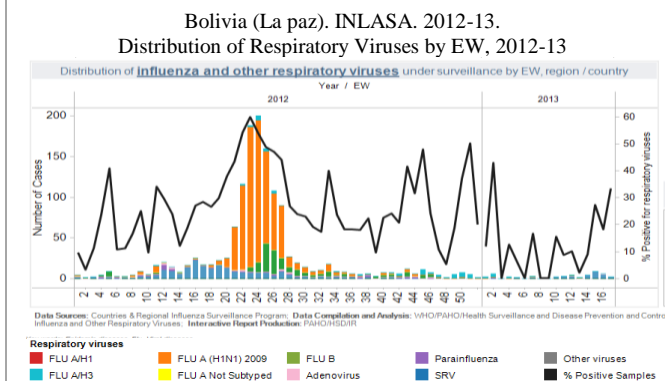
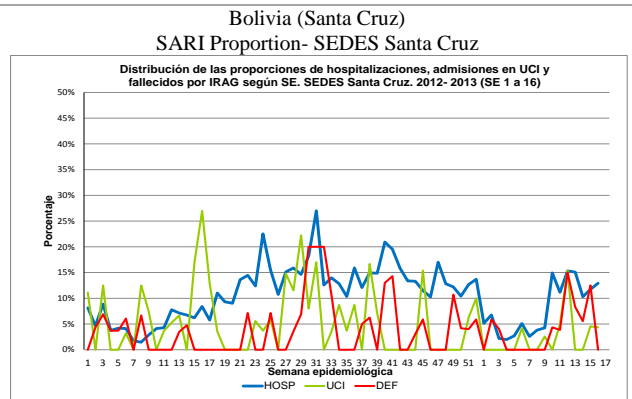
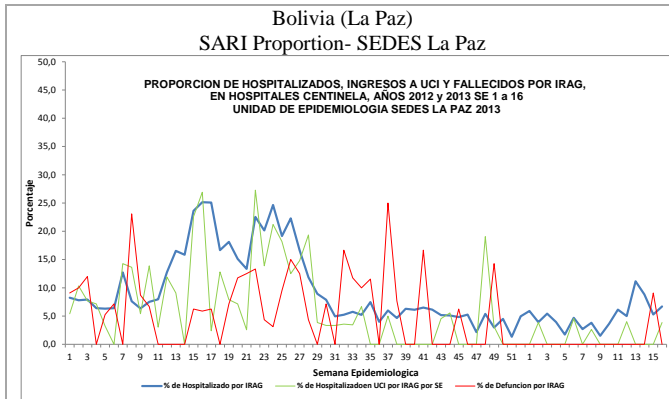
Honduras: Distribution of Comorbidities, Hospitalizations, ICU Admissions, Deaths, SARI Sentinel Surveillance, Honduras, EW No. 1-15, 2013

Factores de Riesgo	IRAG Hospitalización		IRAG admitidos UCI		IRAG fallecidos	
	N(138)	%	N(12)	%	N(2)	%
Comorbilidad subyacente	46	33.33%	2	16.67%	0	0.00%
Cardiopatías	17	12.32%	2	16.67%	0	0.00%
Enfermedad pulmonar crónica	19	13.77%	0	0.00%	0	0.00%
Diabetes	3	2.17%	0	0.00%	0	0.00%
Cáncer	0	0.00%	0	0.00%	0	0.00%
Inmunosupresión	0	0.00%	0	0.00%	0	0.00%
Alcoholismo crónico	1	0.72%	0	0.00%	0	0.00%
Obesidad	1	0.72%	0	0.00%	0	0.00%
Otras	5	3.62%	0	0.00%	0	0.00%
Sin comorbilidad	92	66.67%	10	83.33%	2	100.00%
Embarazo	2	1%	0	0%	0	0%
IRAG con comorbilidad sin antecedente de vacuna contra influenza	0	0.00%	0	0%	0	0%
Embarazadas con IRAG sin antecedente de vacuna contra influenza	2	1.45%	0	0%	0	0%
IRAG con antecedentes de vacunas	6	4.35%	0	0%	0	0%

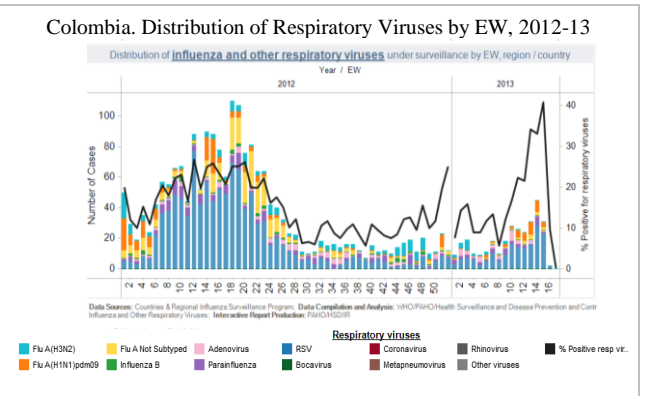
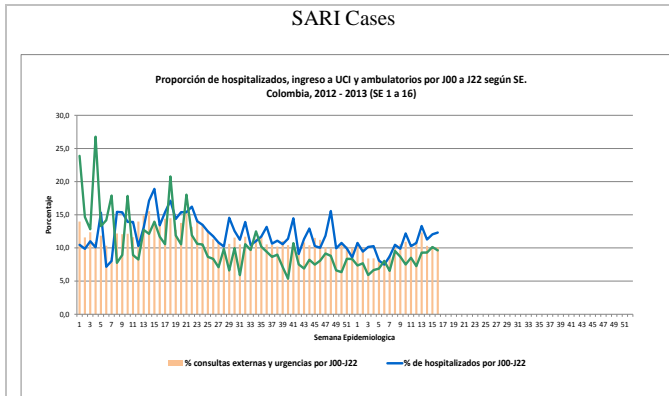
Distribution of Hospitalizations, ICU Admissions, and Deaths for SARI, Sentinel Surveillance, Honduras, EW No. 1-15, 2013.



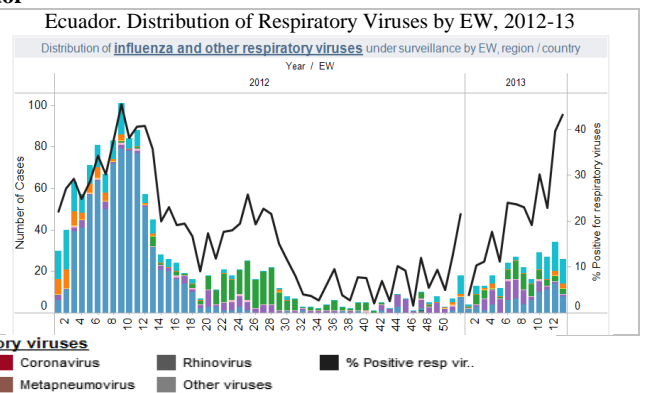
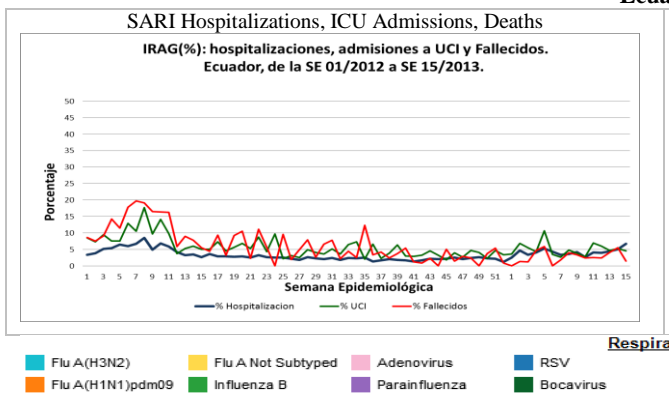
Bolivia



Colombia

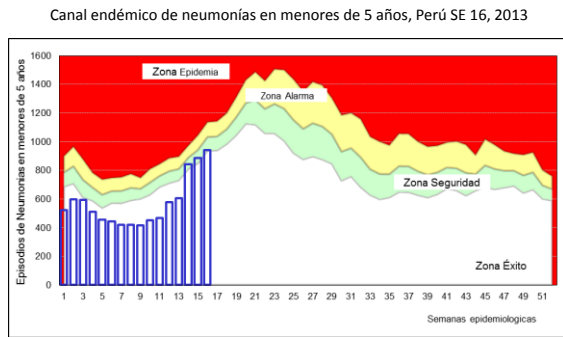


Ecuador

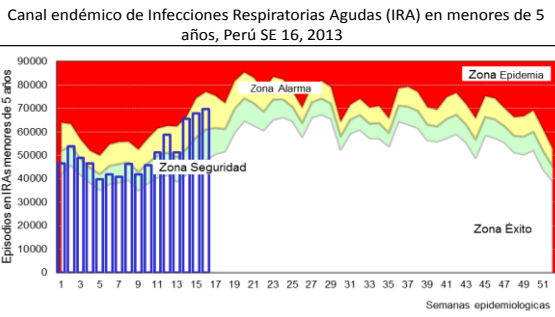


Perú

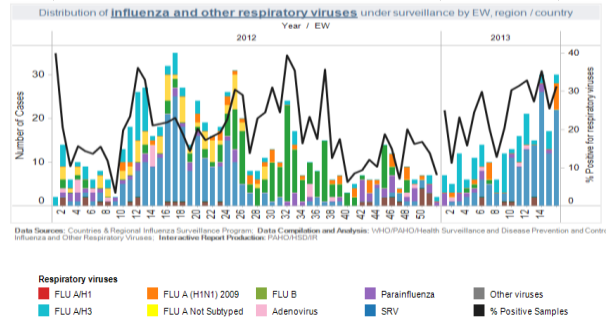
Endemic Channel of Pneumonia Cases in Children < 5 years of Age by EW, Peru, 2013



Endemic Channel of ARI Cases in Children < 5 years of Age by EW, Peru, 2013



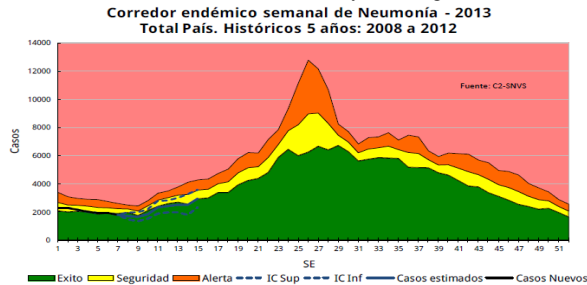
Perú. Distribution of Respiratory Viruses by EW .2012-13



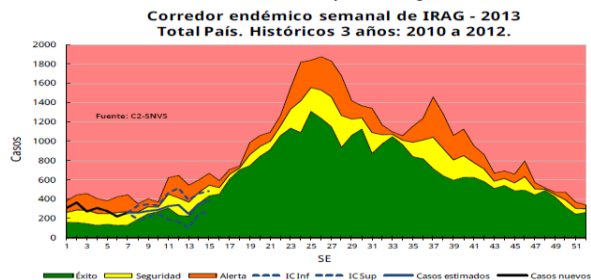
South America –Southern Cone

Argentina

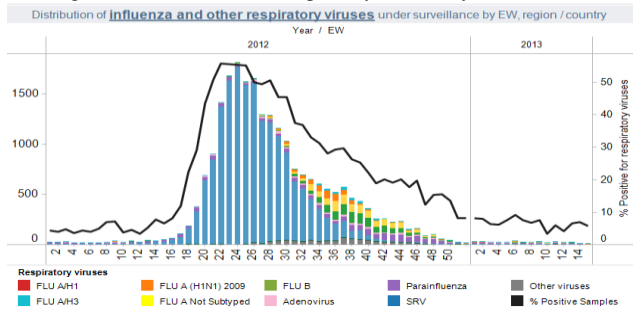
Endemic Channel for Pneumonias by EW, Argentina, 2013



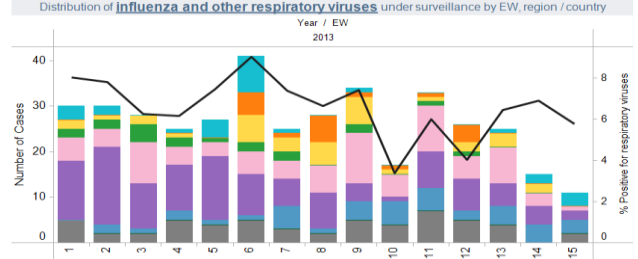
Endemic Channel for SARI by EW, Argentina, 2013



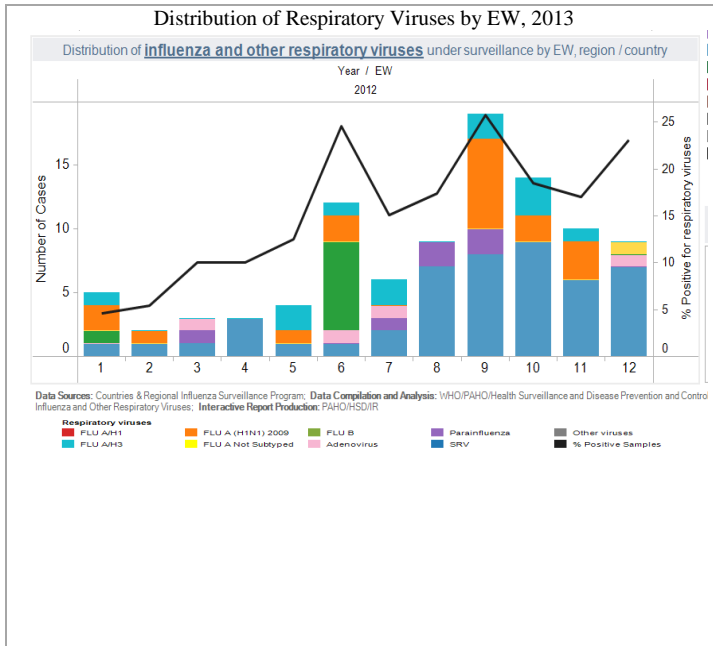
Argentina. Distribution of Respiratory Viruses by EW, 2012/13



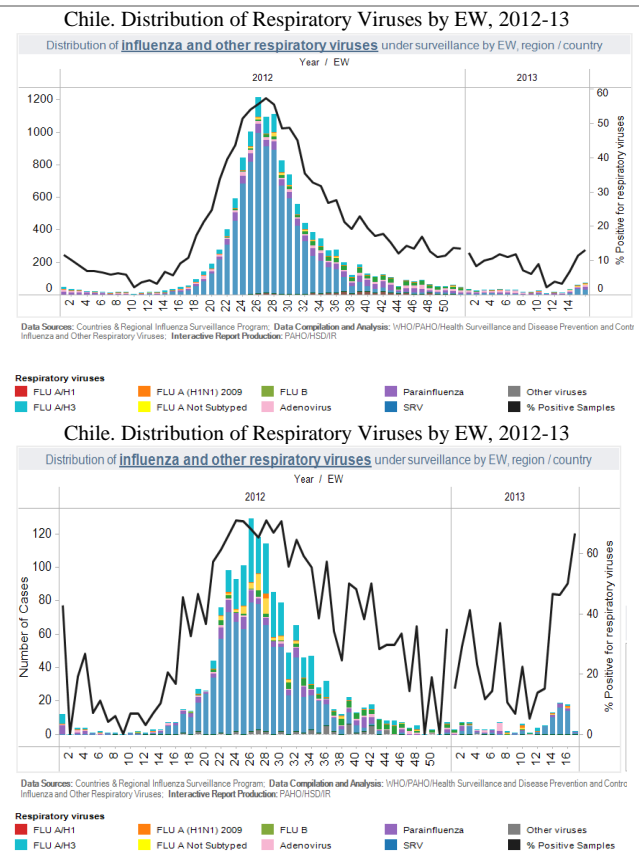
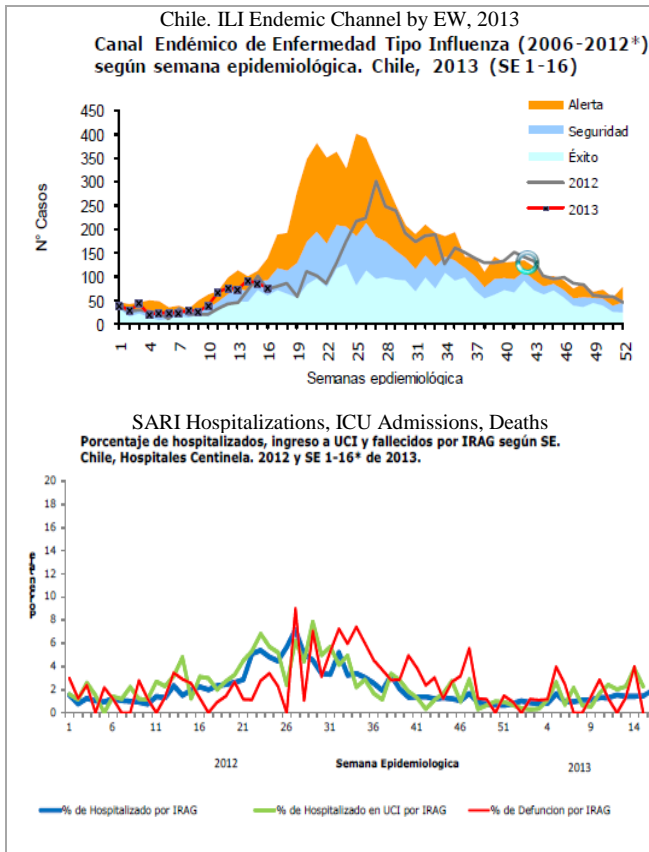
Argentina. Distribution of Respiratory Viruses by EW, 2013



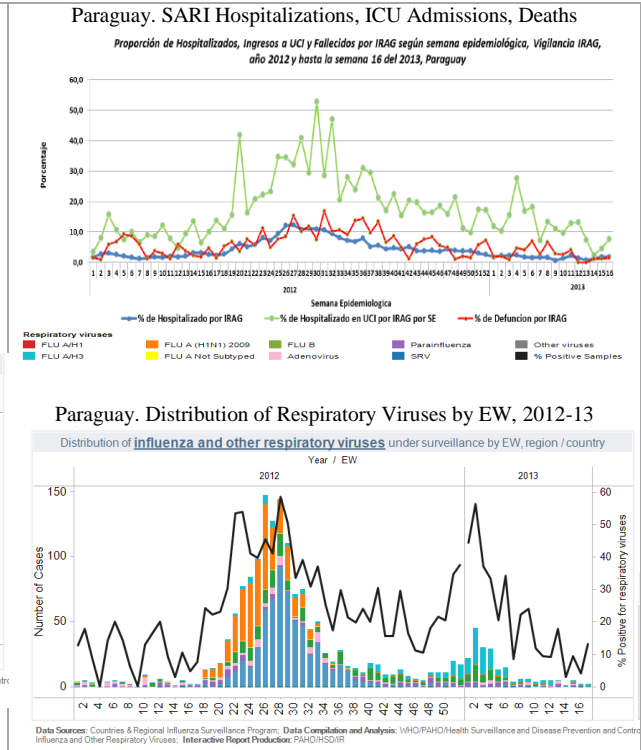
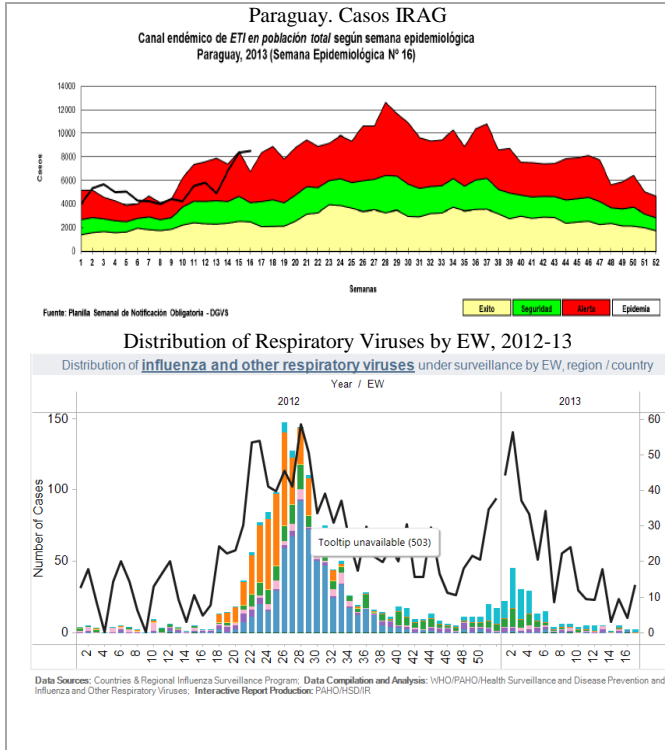
Brasil



Chile



Paraguay



Uruguay

