

Regional Update EW 46, 2014

Influenza and other respiratory virus
(November 25, 2014)

Actualización Regional SE 46, 2014

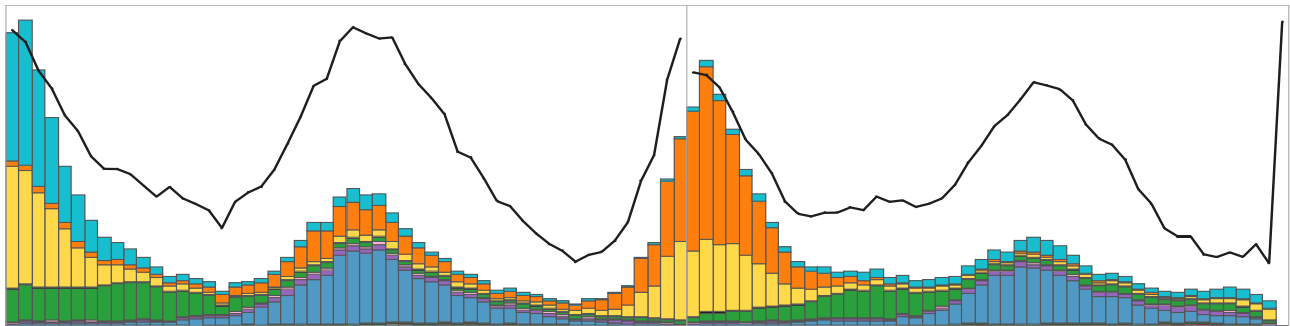
Influenza y otros virus respiratorios
(25 de noviembre, 2014)

PAHO interactive influenza data
Datos interactivos de influenza de la OPS:

http://ais.paho.org/phis/viz/ed_flu.asp

Influenza Regional Reports:
Informes regionales de influenza:

www.paho.org/influenzareports
www.paho.org/reportesinfluenza



The information presented in this update is based on data provided by Ministries of Health and National Influenza Centers of Member States to the Pan American Health Organization (PAHO) or from updates on the Member States' Ministry of Health web pages.

La información presentada en esta actualización se obtiene a partir de los datos distribuidos por los Ministerios de Salud de los Estados Miembros y de los Centros Nacionales de Influenza de los Estados Miembros de la Organización Panamericana de la Salud (OPS) o de actualizaciones de los Ministerios de Salud de los Estados Miembros en sus páginas web.

WEEKLY SUMMARY (ENGLISH)

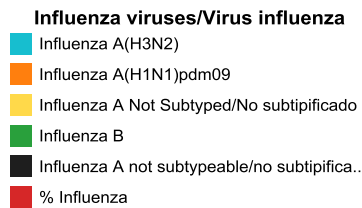
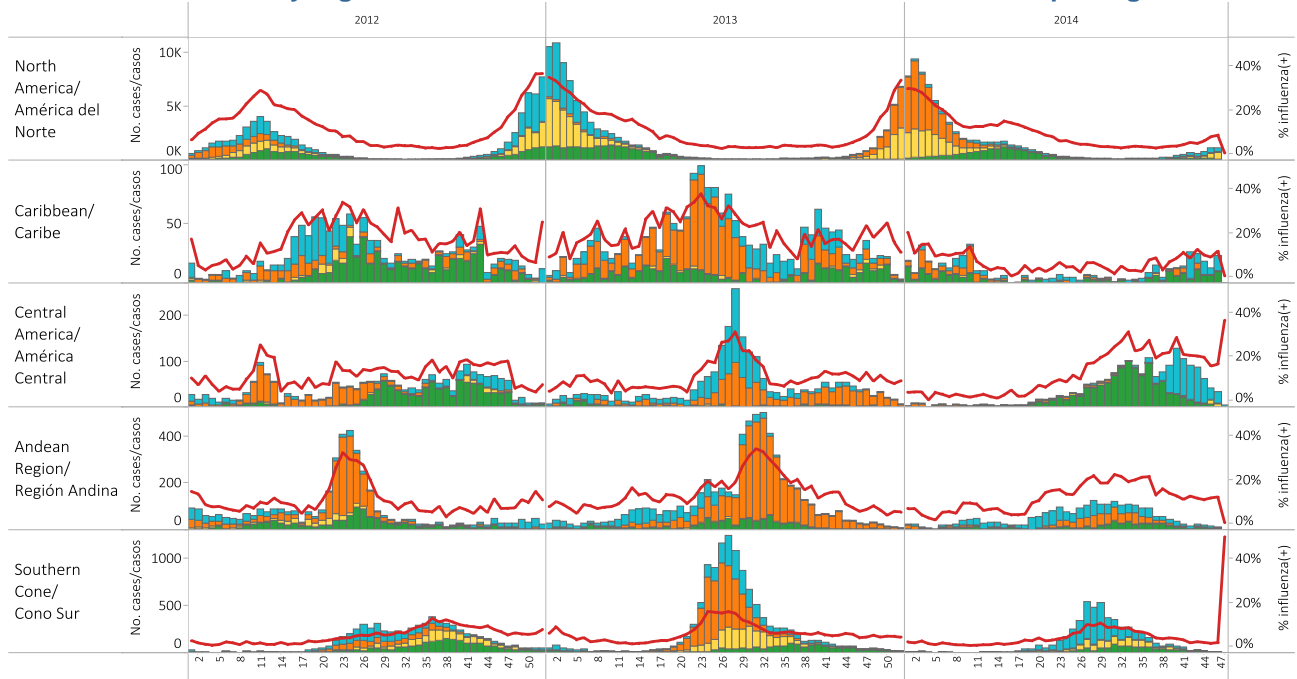
- **North America:** Influenza activity continued to increase slightly but remained low. In Canada, ILI activity increased this week and remained above expected levels since EW 35. Influenza detections have continued to increase since EW 37 and influenza A(H3N2) and influenza A (not subtyped) have predominated among circulating influenza viruses. Detections of RSV have continued to increase since EW 40 and rhinovirus detections have decreased since EW 43. In the United States, ILI activity has remained below the national baseline for the last seven weeks. Influenza A (not subtyped) and influenza A(H3) have predominated among the circulating influenza viruses. Other respiratory virus activity remained within expected levels with an increasing trend of RSV detections since EW 39. From mid-August to November 20, 2014, 1,121 cases of Enterovirus D68 have been confirmed in 47 states and the District of Columbia. Reports from most states over the last months have indicated decreasing EV-D68-like illness activity. In Mexico, ARI activity remained within the endemic channel and the proportions of SARI/ILI consultations remained below 2%. For the last eight weeks, there have been very few influenza detections in the country.
- **Caribbean:** Respiratory virus activity remained low. In Cuba, SARI activity remained elevated, and the respiratory virus detections increased this week after three weeks of decreasing. In the Dominican Republic, there have been few respiratory virus detections during the last five weeks. In Puerto Rico, ILI activity (as reported to CDC) was reported as high after being moderate last week, however influenza detections remained low and decreased during the last six weeks. In Saint Lucia, the number of cases of fever and acute respiratory symptoms decreased this week after an increasing trend since EW 43. In Jamaica, the proportion of SARI hospitalizations were within expected levels. Among respiratory viruses, circulation of RSV (Cuba, Dominican Republic), influenza A(H3N2) (Cuba), influenza B (Jamaica) and adenovirus (Dominican Republic) were observed.
- **Central America:** Respiratory virus activity remained low with the exception of Costa Rica. In Costa Rica, SARI activity remained within expected levels; however respiratory virus detections have been increasing during the last six weeks. In El Salvador, SARI activity remained within expected levels and there have been few respiratory virus detections in the last six weeks. In Panama, there have been few respiratory virus detections during the last four weeks. Among respiratory viruses, circulation of RSV (Costa Rica, El Salvador) and influenza A(H3N2) (Costa Rica, Panama) were observed.
- **Andean Sub-region:** Respiratory virus activity remained low. In Colombia, ARI activity remained within expected levels and respiratory virus detections have been decreasing during the last two weeks. In Peru, there have been very few respiratory virus detections in the last six weeks. Among respiratory viruses, circulation of RSV (Colombia) and parainfluenza (Peru) were observed.
- **Southern Cone:** Respiratory virus activity and SARI/ARI activity have continued to decrease. There have been very few influenza and other respiratory virus detections in the last weeks (Argentina, Brazil, Chile, Paraguay, Uruguay).

RESUMEN SEMANAL (ESPAÑOL)

- **América del Norte:** La actividad de influenza continúa aumentando ligeramente pero sigue siendo baja. En Canadá, la actividad de ETI se incremento esta semana y permanece por encima de la línea basal desde la SE 35. Las detecciones de influenza continúan aumentando desde la SE 37 e influenza A(H3N2) e influenza A (no subtipificada) han predominado entre los virus influenza circulantes. Las detecciones de VSR continúan aumentando desde la SE 40 y las detecciones de rinovirus continúan disminuyendo desde la SE 43. En los Estados Unidos, desde las últimas siete semanas la actividad de ETI continúa por debajo de la línea basal nacional. Influenza A (no subtipificada) e influenza A(H3) han predominado entre los virus circulantes de influenza. La actividad de otros virus respiratorios se mantiene dentro de niveles esperados, con una tendencia creciente en las detecciones de VSR desde la SE 39. Desde mediados de agosto y al 20 de noviembre 2014, se han confirmado 1.121 casos de Enterovirus D68 en 47 estados y el Distrito de Columbia. En los últimos meses, la mayoría de los estados han reportado actividad reducida de Enterovirus D68. En México, la actividad de IRA continúa dentro del canal endémico y las proporciones de consultas por IRAG/ETI se mantienen por debajo del 2%. Durante las últimas ocho semanas, han habido muy pocas detecciones de influenza en el país.
- **Caribe:** La actividad de virus respiratorios continúa baja. En Cuba, la actividad de IRAG se mantiene elevada y las detecciones de virus respiratorios se incrementaron esta semana después de tres semanas de disminución. En la República Dominicana, durante las últimas cinco semanas, han habido muy pocas detecciones de virus respiratorios. En Puerto Rico, la actividad de ETI (de acuerdo al CDC) se reporta como elevada, después de haber estado moderada la semana anterior, sin embargo las detecciones de influenza continúan bajas y en tendencia decreciente desde las últimas seis semanas. En Santa Lucía, el número de casos de fiebre y síntomas respiratorios agudos disminuyeron esta semana, después del aumento registrado desde la SE 43. En Jamaica, la proporción de hospitalizaciones por IRAG se encuentra de niveles esperados. Entre los virus respiratorios, se observa la circulación de VSR (Cuba, República Dominicana), influenza A(H3N2) (Cuba), influenza B (Jamaica) y adenovirus (República Dominicana).
- **América Central:** La actividad de virus respiratorios continúa baja, con la excepción de Costa Rica. En Costa Rica, la actividad de IRAG se mantiene dentro de niveles esperados, sin embargo las detecciones de virus respiratorios se han incrementado desde las últimas seis semanas. En El Salvador, la actividad de IRAG se mantiene dentro de niveles esperados y han habido pocas detecciones de virus respiratorios en las últimas seis semanas. En Panamá, durante las últimas cuatro semanas ha habido pocas detecciones de virus respiratorios. Entre los virus respiratorios, se observa la circulación de VSR (Costa Rica, El Salvador) e influenza A(H3N2) (Costa Rica, Panamá).
- **Sub-región Andina:** La actividad de virus respiratorios continúa baja. En Colombia, la actividad de IRA se encuentra dentro de niveles esperados y en las últimas dos semanas han disminuido las detecciones de virus respiratorios. En Perú, han habido muy pocas detecciones de virus respiratorios en las últimas seis semanas. Entre los virus respiratorios, se observa la circulación de VSR (Colombia) y parainfluenza (Perú).
- **Cono Sur:** La actividad de virus respiratorios y de IRAG/IRA continúa descendiendo. En las últimas semanas, han habido muy pocas detecciones de influenza y otros virus respiratorios (Argentina, Brasil, Chile, Paraguay, Uruguay).

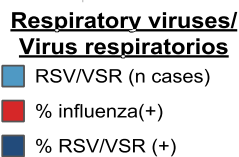
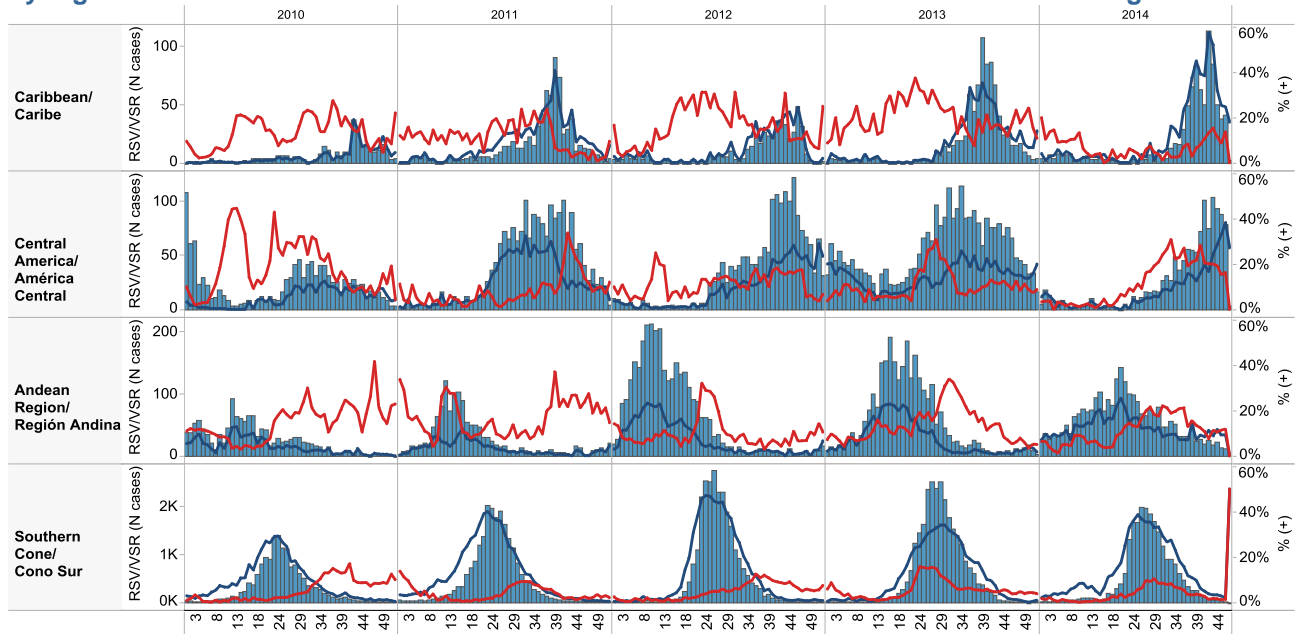
Influenza circulation by region. 2013-14

Circulación virus influenza por región. 2013-14



Respiratory syncytial virus (RSV) circulation by region. 2013-14

Circulación de virus sincitial respiratorio por región. 2013-14



Weekly and cumulative numbers of influenza and other respiratory virus, by country and EW, 2014
 Número semanal y acumulado de influenza y otros virus respiratorios, por país y SE, 2014

EW 43-46, 2014 / SE 43-46, 2014

		N samples/muestras	% Positive/Positividad	Influenza A(H3N2)	Influenza A (H1N1)pdm09	Influenza A Not Subtyped/No subtipificado	Influenza B	Adenovirus	Parainfluenza	RSV/RSR	Bocavirus	Coronavirus	Metapneumovirus	Rinovirus
North America/ América del Norte	Canada	12,553	2.8	216	1	104	32							
	Mexico	1,274	14.2	82	1	4	81	1	2	2				
	United States of America	42,211	7.3	1,024	10	1,548	504							
Caribbean/ Caribe	CARPHA	1	0.0				0							
	Cuba	511	44.4	27	3	0	31	0	16	115	0	2	0	25
	Dominican Republic	80	20.0	1			4	1	4	6				
	Jamaica	41	2.4	0	0	0	1	0	0	0				
Central America/ América Central	Costa Rica	500	59.8	70	0	19	17	8	2	183				
	El Salvador	168	31.5	2	0	0	0	1	2	48				
	Guatemala	31	51.6	0	0	3	1	0	0	11	0	0	1	0
	Honduras	11	36.4	4	0	0	0	0	0	0				
	Nicaragua	413	39.0	93			4			64				
	Panama	102	87.3	10			0			57			6	16
Andean Region/ Región Andina	Bolivia - INLASA La Paz	57	10.5		2		2		1	1				
	Colombia	346	68.2	22	2	3	29	27	43	56	15	5	13	15
	Ecuador	25	20.0	1			0	0	3	1				
	Peru	222	13.1	2	1	0	9	1	8	6	0	0	2	0
Brazil & Southern Cone/ Cono Sur	Argentina	1,569	17.3	0	0	11	6	16	153	37			48	
	Brazil	527	14.8	11	17	0	50							
	Chile	2,504	14.0	2		1	36	93	68	64			86	
	Paraguay	184	19.6	0	0	0	8	4	12	12	0	0	0	0
	Uruguay	10	40.0	0	0	0	0	0	2	0				
Grand Total		63,340	8.7	1,567	37	1,693	815	152	316	663	15	7	156	56

Cumulative, EW 1-46, 2014 / Acumulado, SE 1-46, 2014

		N samples/ muestras	% Positive/ Positividad	Influenza A(H3N2)	Influenza A (H1N1)pdm09	Influenza A Not Subtyped/No subtipificado	Influenza B	Adenovirus	Parainfluenza	RSV/RSR	Bocavirus	Coronavirus	Metapneumovirus	Rinovirus
North America/ América del Norte	Canada	190,410	14	878	8,509	9,604	7,456							
	Mexico	25,314	27	1,036	4,332	270	870	22	9	40				
	United States of America	339,896	13	5,224	18,533	11,394	8,198							
Caribbean/ Caribe	CARPHA	1,046	15	17	40	7	23	7	11	49	1	1		3
	Cuba	2,939	41	44	38	0	108	10	208	372	24	55	8	262
	Dominican Republic	845	22	24			11	10	54	84				
	Haiti	145	11	10	0	0	6							
	Jamaica	438	3	3	0	0	11	0	0	0				
Central America/ América Central	Costa Rica	3,047	34	119	32	19	241	111	101	398				
	El Salvador	1,651	17	5	5	2	55	72	36	100				
	Guatemala	1,155	26	2	10	24	39	15	22	80	0	0	112	0
	Honduras	1,263	17	23	0	0	126	17	22	27				
	Nicaragua	4,277	26	396	9		565	1	31	105				
	Panama	1,599	77	23	37		55	47	197	479			16	372
Andean Region/ Región Andina	Bolivia - CENETROP Sta...	2,623	29	276	215	0	30	28	44	175				
	Bolivia - INLASA La Paz	1,864	30	194	199		17	15	10	126	3		1	
	Colombia	6,436	43	382	62	3	235	175	438	1,094	122	50	87	84
	Ecuador	3,270	22	14	32		97	43	58	455			6	
	Peru	3,278	33	232	170	0	154	44	58	417	0	0	17	0
Brazil & Southern Cone/ Cono Sur	Argentina	55,614	34	1,045	15	657	520	427	1,641	14,283			577	
	Brazil	9,802	17	974	338	0	378							
	Chile	37,356	31	1,366	16	180	279	847	1,194	6,852			745	
	Paraguay	4,301	30	213	16	224	107	45	59	458	0	0	157	0
	Uruguay	826	36	44	0	0	8	10	38	168				
Grand Total		699,395	17	12,544	32,608	22,384	19,589	1,946	4,231	25,762	150	106	1,726	721

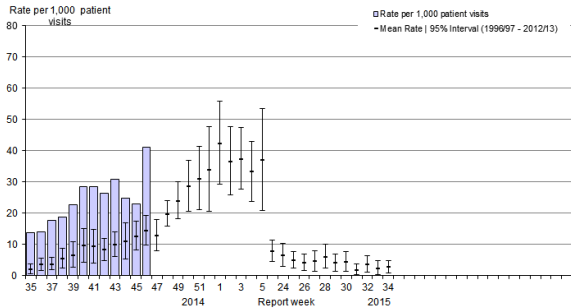
North America / América del Norte:

Canada

- ILI activity continued above expected levels / La actividad de ETI permanece por encima de los niveles esperados
- Influenza A(H3N2) has predominated among circulating influenza virus / Influenza A(H3N2) predomina entre los virus influenza circulantes
- RSV detections has been increased since EW 40 / Las detecciones de VSR se han incrementado desde la SE40
- Detections of rhinovirus increased this year compared to previous years / Las detecciones de rinovirus se incrementaron este año em comparación con año previos

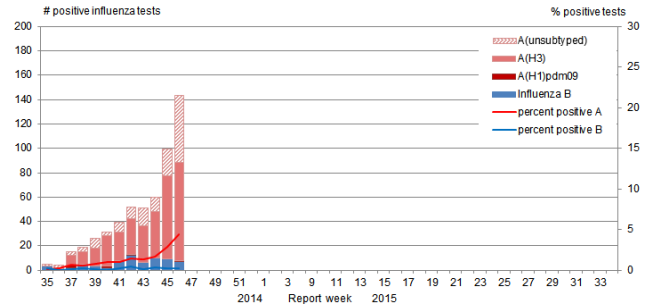
Canada: ILI Consultation Rates, by EW, 2014-15
Tasa de consultas de ETI, por SE, 2014-15

Figure 5. Influenza-like-illness (ILI) consultation rates by report week, compared to the 1996-97 through to 2012-13 seasons (with pandemic data suppressed), Canada, 2014-2015



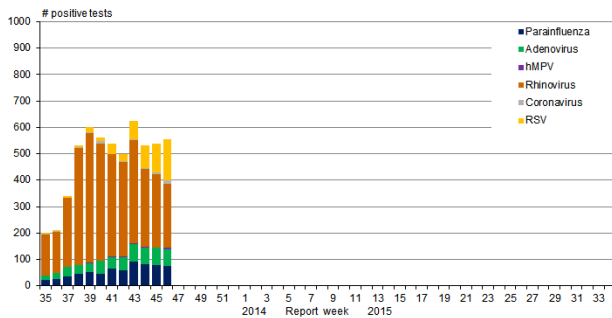
Canada: Influenza virus distribution by EW, 2014-15
Distribución de virus de influenza por SE, 2014-15

Figure 2. Number of positive influenza tests and percentage of tests positive, by type, subtype and report week, Canada, 2014-15



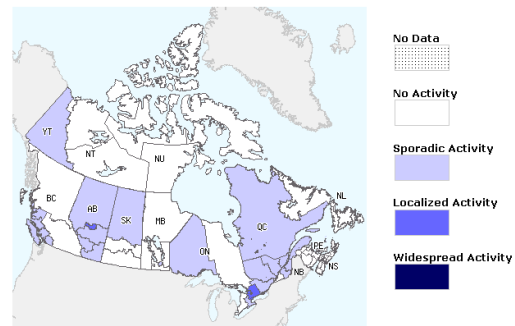
Canada: Other respiratory virus distribution by EW, 2014-15
Distribución de virus respiratorios por SE, 2014-15

Figure 3. Number of positive laboratory tests for other respiratory viruses by report week, Canada, 2014-15



Canada: Influenza/ILI Activity by region, EW 46, 2014
Actividad de Influenza/ETI por provincia & territorio, SE 46, 2014

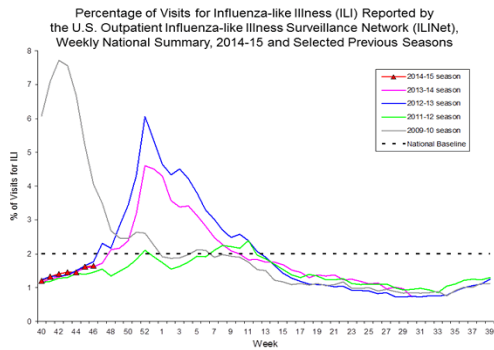
Figure 1. Map of overall influenza/ILI activity level by province and territory, Canada, Week 46



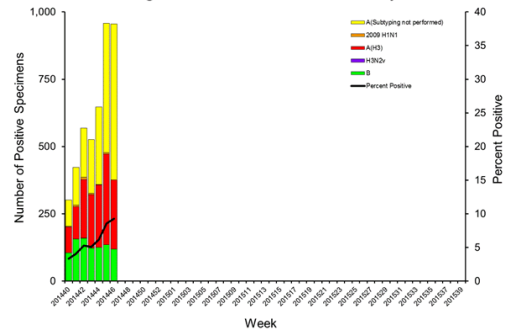
United States

- ILI activity continued below the national baseline / La actividad de ETI continua por debajo de la línea de base nacional
- Influenza A (not subtyped), influenza A(H3) and influenza B have predominated among circulating influenza virus / Influenza A (no subtipificada), influenza A(H3) e influenza B han predominado entre los virus circulantes de influenza
- RSV detections has been increased since EW 39 / Las detecciones de VSR se han incrementado desde la SE 39
- Pneumonia and influenza mortality continued below the epidemic threshold of 6.2% / La mortalidad por pneumonia e influenza continúan por debajo del umbral epidémico del 6,2%

US: Percent of ILI visits by EW, 2014-15
Porcentaje de consultas ETI por SE, 2014-15

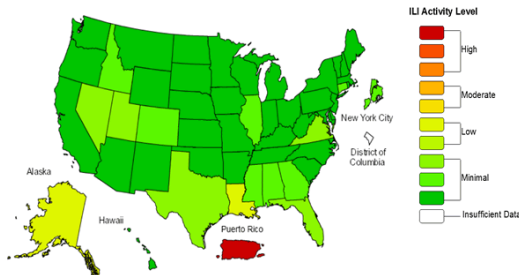


US: Influenza virus distribution by EW, 2014-15
Distribución de virus de influenza por SE, 2014-15
Influenza Positive Tests Reported to CDC by U.S. WHO/NREVSS
Collaborating Laboratories, National Summary, 2014-15

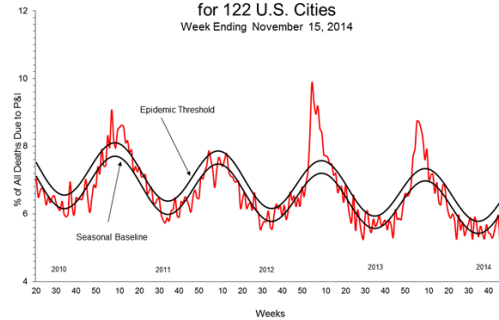


US: ILI activity by state, EW 46, 2014
Actividad ETI por estado, SE 46, 2014

Influenza-Like Illness (ILI) Activity Level Indicator Determined by Data Reported to ILINet
2014-15 Influenza Season Week 46 ending Nov 15, 2014

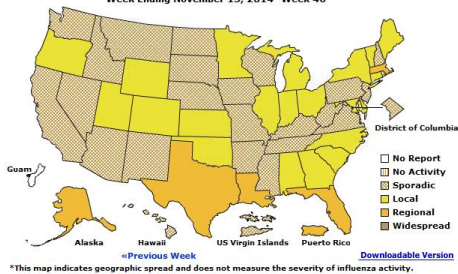


US: Pneumonia and influenza mortality
Mortalidad por neumonía e influenza
Pneumonia and Influenza Mortality
for 122 U.S. Cities
Week Ending November 15, 2014



US: Weekly influenza activity reported by State and Territory
Actividad semanal de influenza reportado por estado y territorio

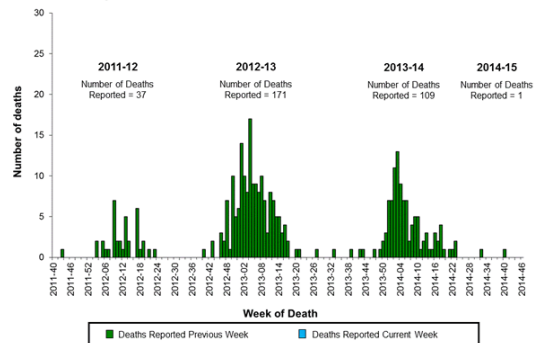
A Weekly Influenza Surveillance Report Prepared by the Influenza Division
Weekly Influenza Activity Estimates Reported by State and Territorial Epidemiologists*
Week Ending November 15, 2014- Week 46



*This map indicates geographic spread and does not measure the severity of influenza activity.

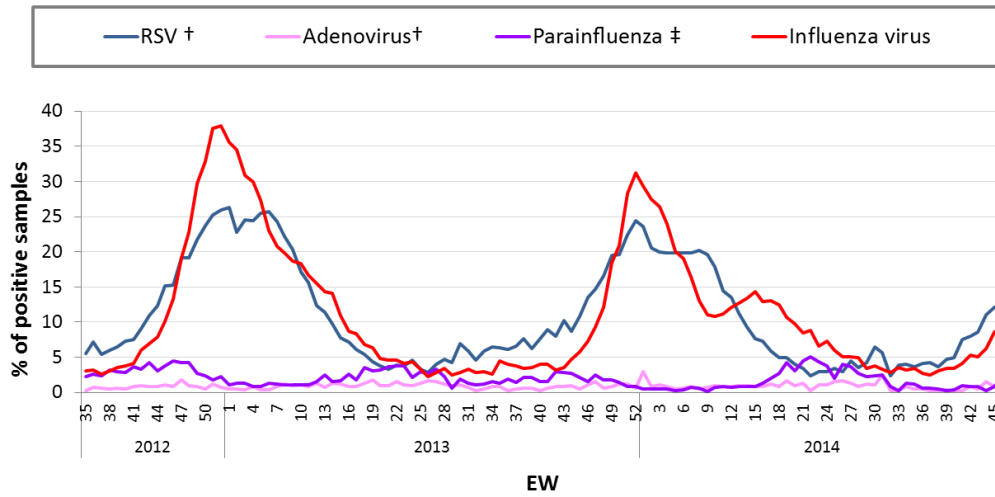
US: Número de fallecidos pediátricos asociados a influenza por semana: 2011 al presente

Number of Influenza-Associated Pediatric Deaths by Week of Death: 2011-12 season to present



US: Percent positivity for respiratory virus under surveillance, by EW, 2012-14
 Porcentaje de positividad para virus respiratorios en vigilancia, por SE, 2012-14

**Percent Positivity for Respiratory Viruses Under Surveillance*—
 United States, 2012/2013 - 2014/2015**



*For adenovirus, parainfluenza 1,2,3, and RSV, data are from NREVSS Laboratories (<http://www.cdc.gov/surveillance/nrevss/>); for influenza, data are from U.S. WHO/NREVSS Collaborating Laboratories (<http://www.cdc.gov/flu/weekly/>)

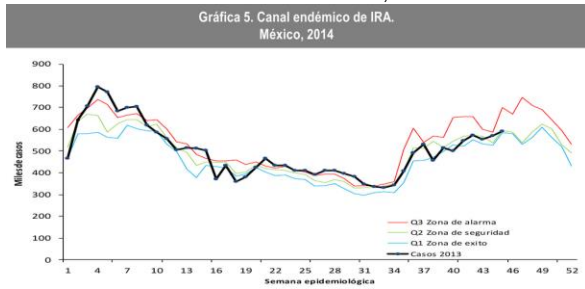
†Antigen detection is reported

‡ Percent positive of Parainfluenza aggregates the % of positive samples from parainfluenza type 1, type 2 and type 3. Assuming that each samples were tested for the 3 sub-types.

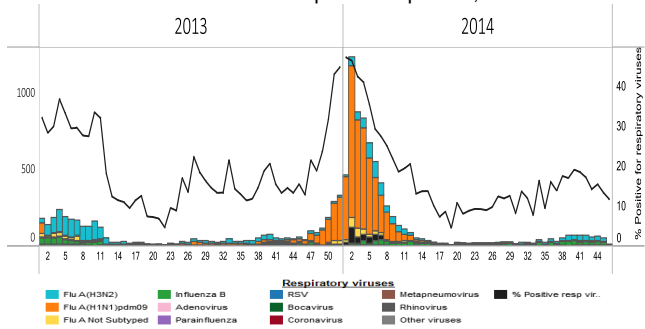
Mexico

- SARI/ILI consultations remained below 2% / Las consultas de IRAG/ETI se mantienen por debajo del 2%
- ARI activity within the endemic channel / La actividad de IRA esta dentro del canal endémico
- Very few influenza detections with predominated influenza A(H3N2) circulation / Muy pocas detecciones de influenza con predominio de circulación de influenza A(H3N2)

Mexico: ARI Endemic Channel, 2014
Canal Endémico de IRA, 2014

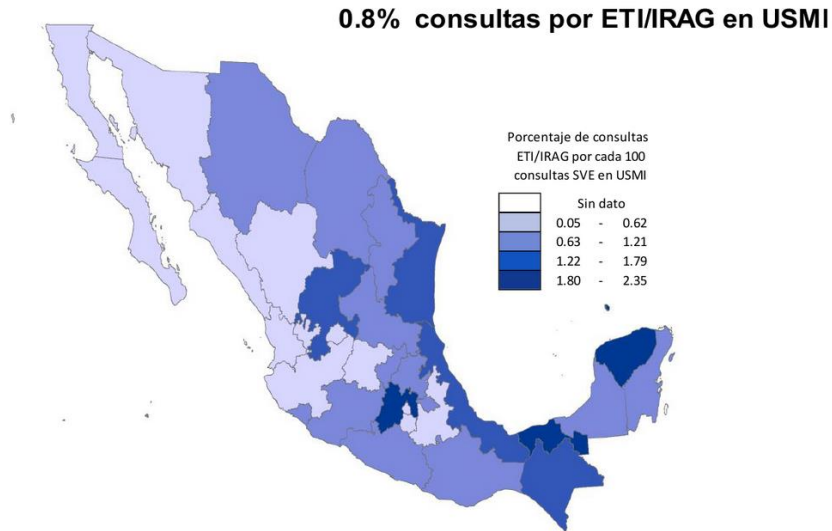


Mexico: Respiratory virus distribution by EW 2013-14
Distribución de virus respiratorios por SE, 2013-14



Mexico: Proportion of ILI / SARI visits, EW 47, 2014
Proporción de consultas por ETI / IRAG, SE47, 2014

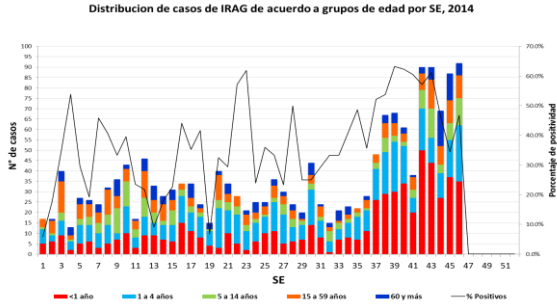
Figura 1. Proporción de consultas por ETI/IRAG en USMI según entidad federativa.
México, 2014



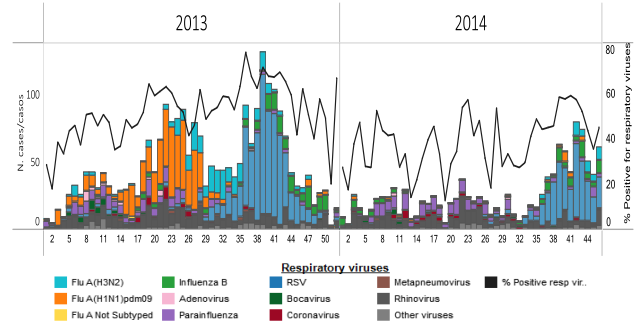
Cuba

- SARI activity remained elevated / La actividad de IRAG se mantiene elevada
- RSV has predominated among circulating virus / Entre los virus respiratorios, predomina la circulación de VSR

Cuba: SARI cases by age group, by EW, 2013-14
Casos IRAG por grupos de edad por SE, 2013-14



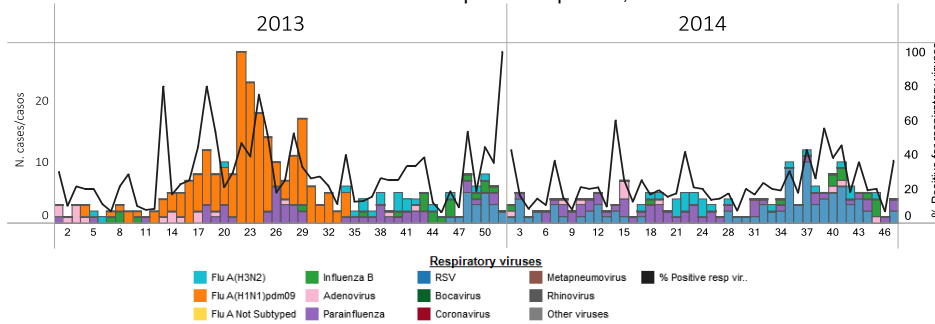
Cuba. Respiratory virus distribution by EW, 2013-14
Distribución de virus respiratorios por SE, 2013-14



Dominican Republic / República Dominicana

- RSV has predominated among circulating virus / Entre los virus respiratorios, predomina la circulación de VSR

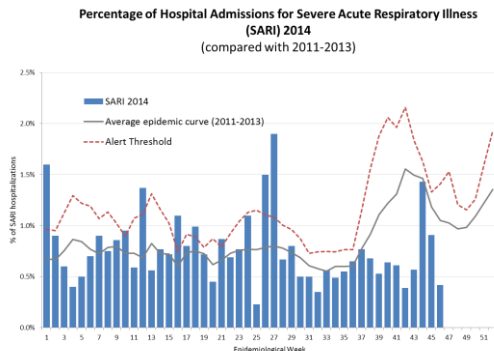
Dominican Republic: Respiratory virus distribution by EW, 2013-14
Distribución de virus respiratorios por SE, 2013-14



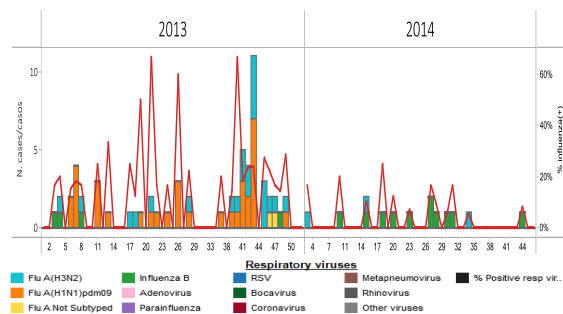
Jamaica

- SARI hospitalizations within expected levels / Las hospitalizaciones de IRAG en niveles esperados
- Very few influenza detections with predominated influenza B circulation / Muy pocas detecciones de influenza con predominio de circulación de influenza B

Jamaica: % SARI-related hospitalizations, by EW, 2014
% Hospitalizaciones asociadas a IRAG por SE, 2014



Jamaica: Influenza virus distribution, by EW, 2013-14
Distribución de virus influenza. por SE, 2013-14

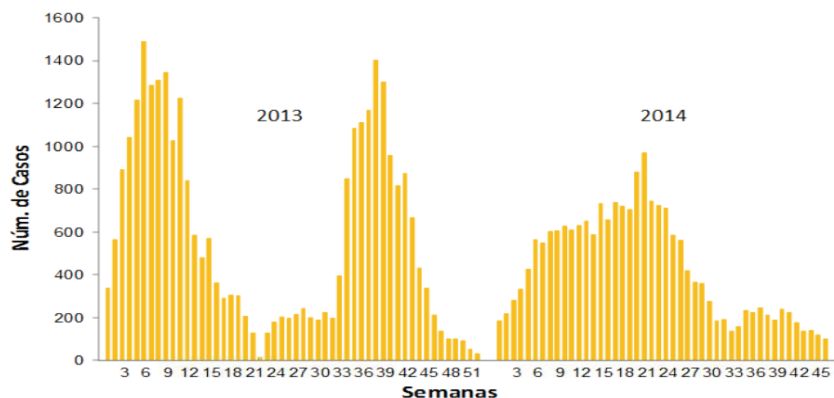


Puerto Rico

- Variable influenza activity / Actividad de influenza variable
- Influenza detections low and decreasing / Detecciones de influenza bajas y en descenso

Puerto Rico: Influenza-positive cases by EW, 2013-14
Casos positivos a influenza por SE, 2013-14

GRÁFICA 1. Número de Casos Positivos a Influenza por Semanas, Puerto Rico 2013-2014

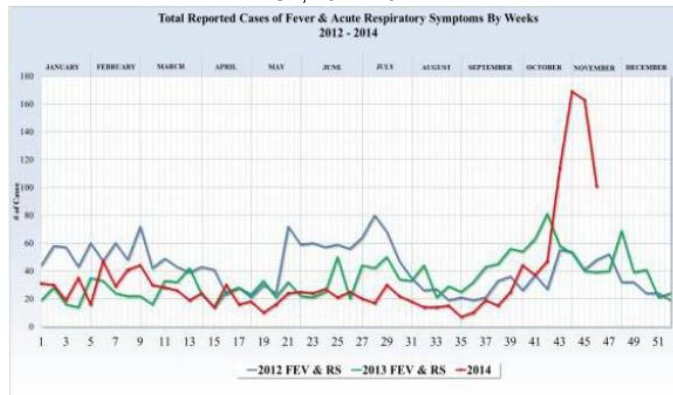


Datos actualizados hasta el 15 de noviembre de 2014
N (año 2013) = 32,162
N (año 2014) = 19,922

Saint Lucia

- Increased of cases with fever and acute respiratory symptoms since EW 43 / Aumento en el número de casos de fiebre y síntomas respiratorios agudos desde la SE 43

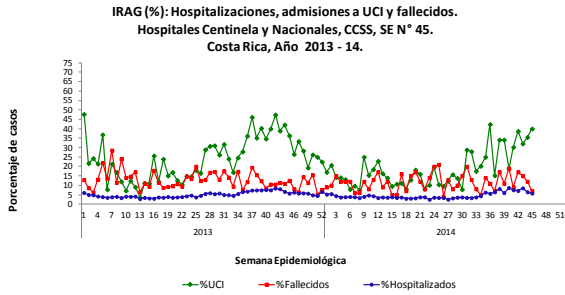
Total de casos reportados de fiebre y síntomas respiratorios agudos, por SE, 2012- 2014



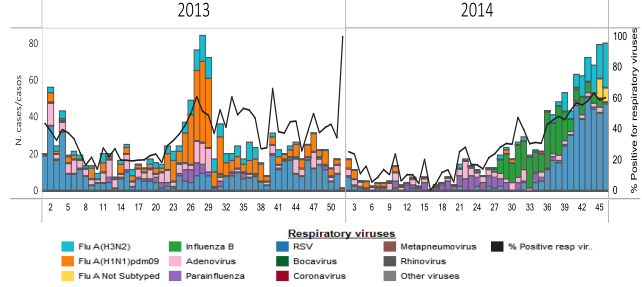
Costa Rica

- SARI activity within expected levels / Actividad de IRAG dentro de niveles esperados
- RSV has predominated among circulating virus / Entre los virus respiratorios, predomina la circulación de VSR
- Influenza A(H3N2) detections has been increased since EW 43 / Las detecciones de influenza A(H3N2) se han incrementado desde la SE 43

Costa Rica: Proportion of SARI-Associated Hospitalizations, ICU Admissions and Deaths, by EW, 2013-14



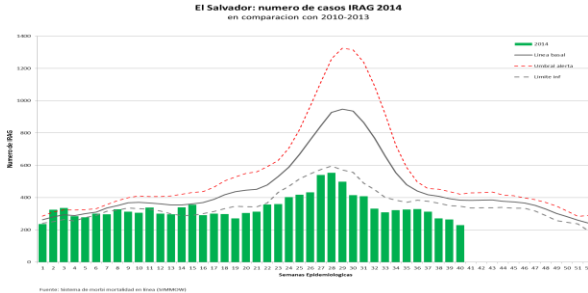
Costa Rica: Respiratory virus distribution, by EW, 2013-14



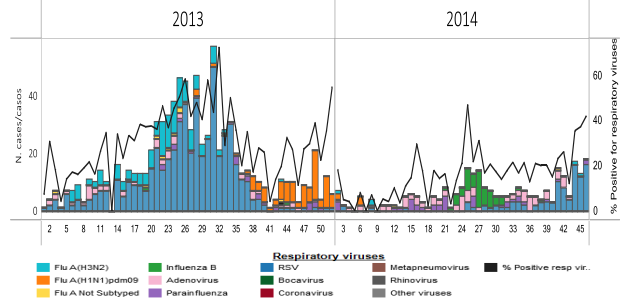
El Salvador

- SARI activity within expected levels / Actividad de IRAG dentro de niveles esperados
- RSV has predominated among circulating virus / Entre los virus respiratorios, predomina la circulación de VSR

El Salvador: Number of SARI cases, by EW, 2014



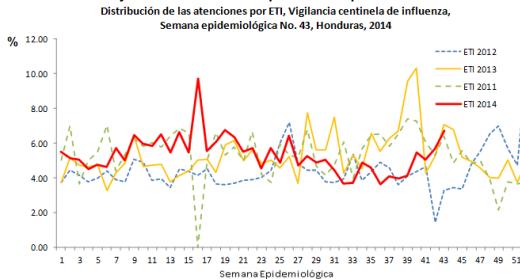
El Salvador: Respiratory virus distribution, by EW, 2013-14



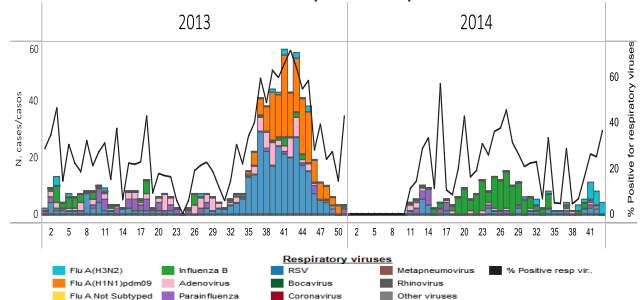
Honduras

- ILI / SARI activity within expected levels / Actividad de ETI/IRAG dentro de niveles esperados
- Very few respiratory virus detections with predominated influenza A(H3N2) / Muy pocas detecciones de virus respiratorios con predominio de influenza A(H3N2)

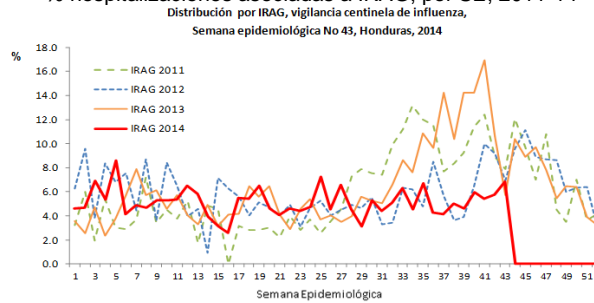
Honduras: Percent of Visits that are ILI by EW, 2011-14



Honduras: Respiratory virus distribution by EW, 2013-14



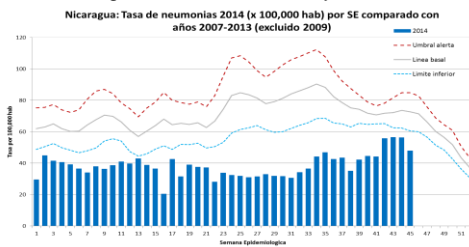
Honduras: % SARI-associated hospitalizations, by EW, 2011-14
 % hospitalizaciones asociadas a IRAG, por SE, 2011-14



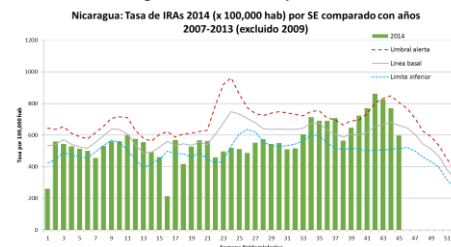
Nicaragua

- ARI activity remained within expected levels / Actividad de IRA dentro de niveles esperados
- Influenza A(H3N2) predominated circulation with increasing detections of RSV since EW 43 / Predominio de circulación de influenza A(H3N2) con incremento en las detecciones de VSR desde la SE 43

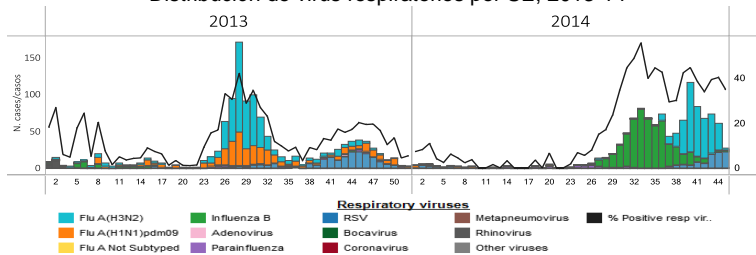
Nicaragua: Pneumonia rate by EW, 2014



Nicaragua: ARI rate by EW, 2014



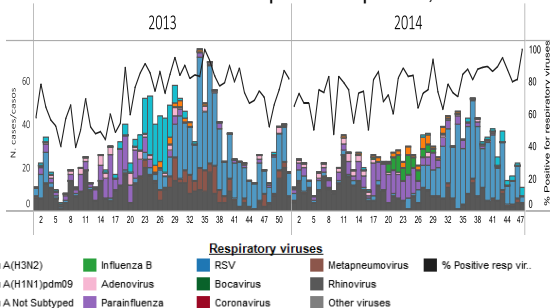
Nicaragua: Respiratory virus distribution by EW, 2013-14
 Distribución de virus respiratorios por SE, 2013-14



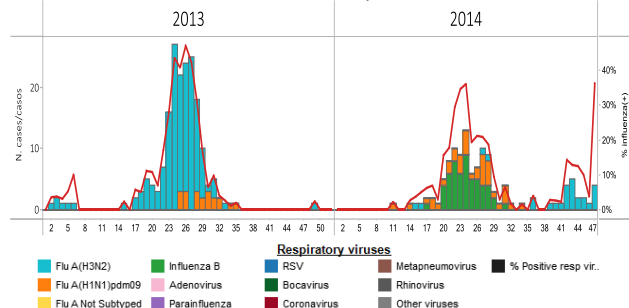
Panama

- Few respiratory virus detections since the last four weeks / Pocas detecciones de virus respiratorios en las cuatro últimas semanas
- RSV has predominated among circulating virus / Entre los virus respiratorios, predomina la circulación de VSR
- Influenza A(H3N2) detections has been increased since EW 42 / Las detecciones de influenza A(H3N2) se han incrementado desde la SE 42

Panama: Respiratory virus distribution by EW, 2013-14
 Distribución de virus respiratorios por SE, 2013-14



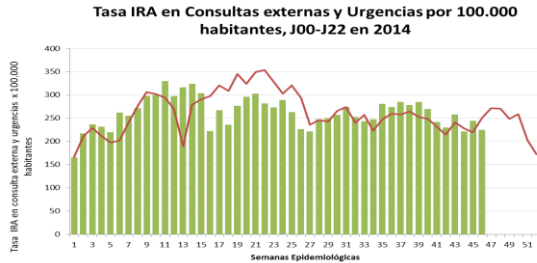
Panama. Influenza virus distribution by EW, 2013-14
 Distribución de influenza por SE 2013-14



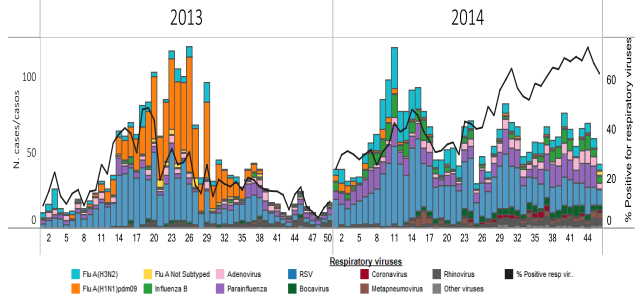
Colombia

- ARI activity within expected levels / Actividad de IRA dentro de niveles esperados
- RSV and parainfluenza have predominated among circulating virus/ Entre los virus respiratorios, ha predominado la circulación de VSR y parainfluenza

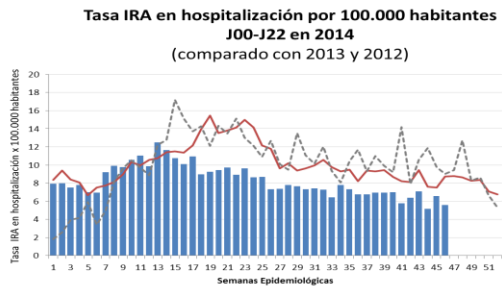
Colombia: Rate of ARI outpatient visits with J00-J20 codes, by EW, 2014



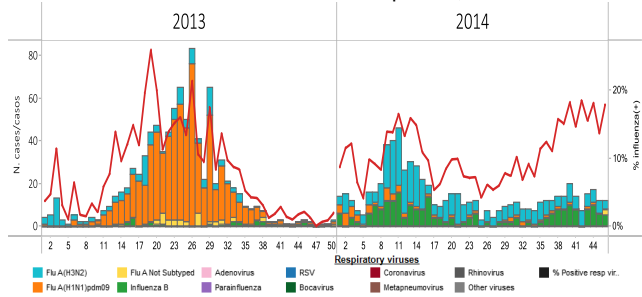
Colombia: Respiratory virus distribution by EW, 2013-14



Colombia: Rate of hospitalizations with J00 to J20 codes, by EW 2014



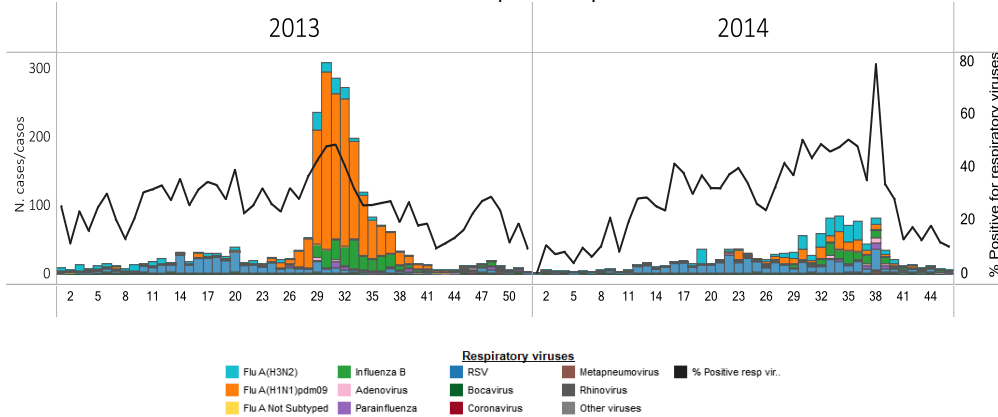
Colombia. Influenza virus distribution by EW, 2013-14



Peru

- Very few respiratory virus detections in the last seven weeks with predominated RSV / Muy pocas detecciones de virus respiratorios en las últimas siete semanas, con predominio de VSR

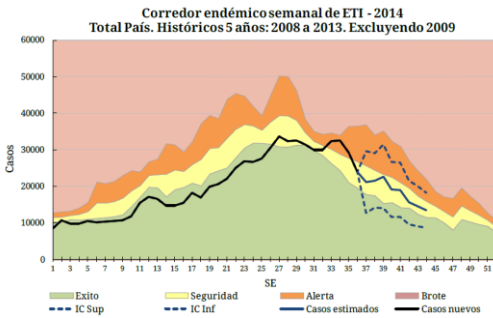
Peru. Respiratory virus distribution by EW, 2013-14



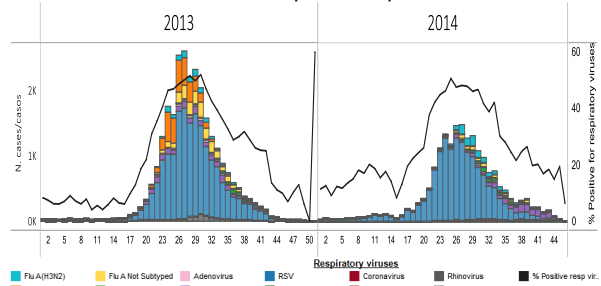
Argentina

- ILI / SARI activity within expected levels / Actividad de ETI/IRAG dentro de niveles esperados
- Downward trend of respiratory virus activity / Tendencia decreciente de actividad viral respiratoria

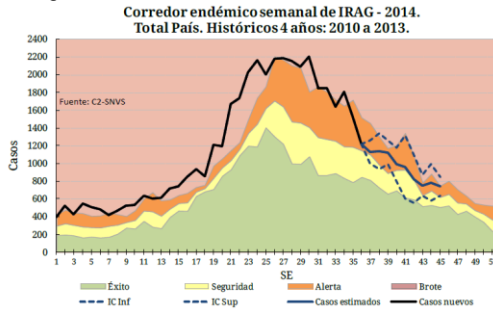
Argentina. ILI cases. Endemic channel, 2014



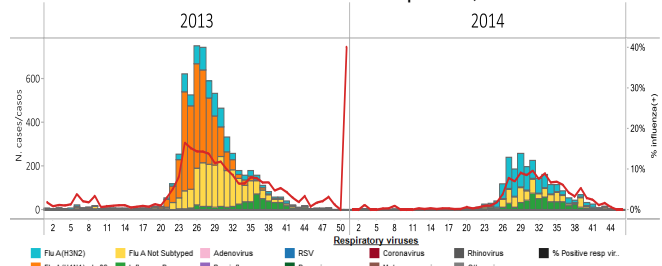
Argentina. Respiratory virus distribution by EW, 2013-14



Argentina. SARI cases. Endemic channel, 2014



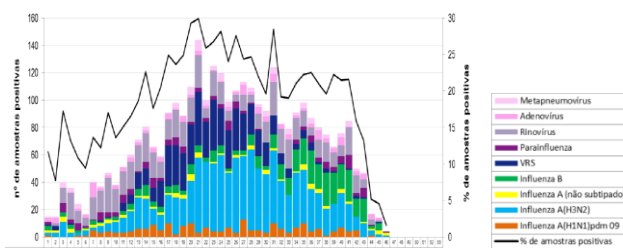
Argentina. Influenza virus distribution by EW, 2014



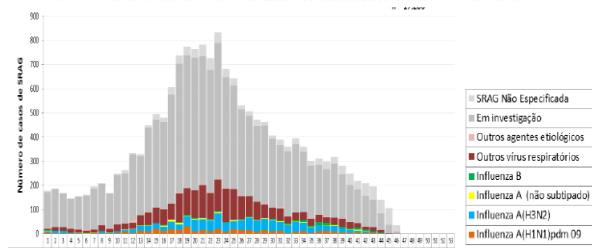
Brazil

- ILI / SARI activity within expected levels / Actividad de ETI/IRAG dentro de niveles esperados
- Downward trend of respiratory virus activity / Tendencia decreciente de actividad viral respiratoria

Brazil: Respiratory virus distribution in ILI cases, by EW, 2014
Distribución de virus respiratorios en casos ETI, por SE, 2014
Figura 1. Distribuição dos vírus respiratórios identificados nas unidades sentinelas de Síndrome Gripal, por semana epidemiológica de início dos sintomas. Brasil, 2014 até a SE 46.

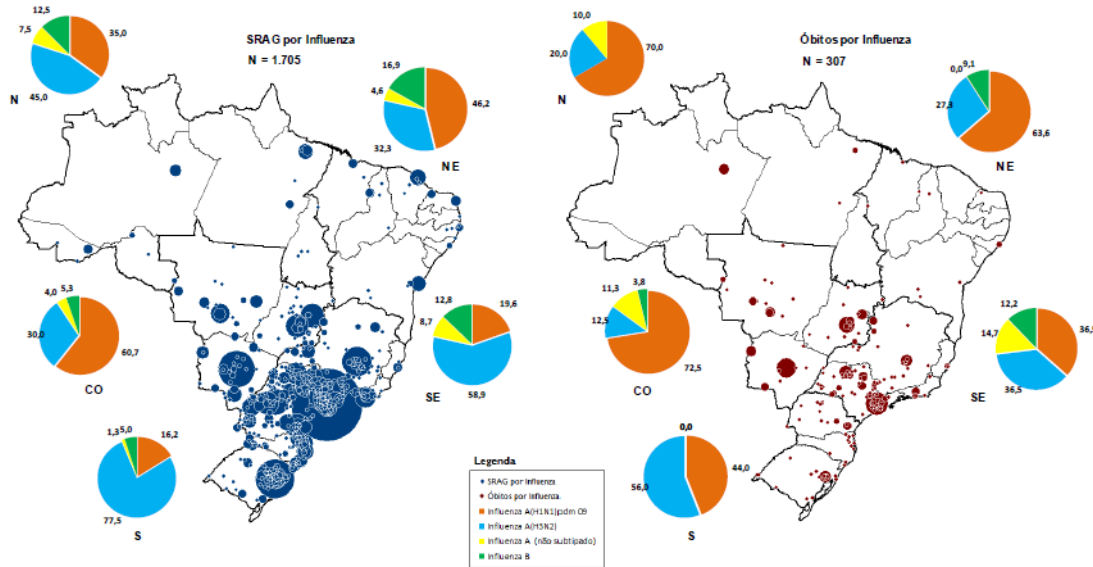


Brazil: Respiratory virus distribution, SARI cases, by EW, 2014
Distribución de virus respiratorios, casos IRAG, por SE, 2014
Figura 3. Distribuição dos casos de Síndrome Respiratória Aguda Grave segundo agente etiológico e semana epidemiológica do início dos sintomas. Brasil, 2014 até a SE 46.



Brazil: Distribution of SARI hospitalizations and deaths by municipality and influenza type/subtype by region
 Distribución de hospitalizaciones y fallecidos por IRAG por municipio y tipo/subtipo de influenza por región

Anexo 4. Distribuição espacial dos casos e óbitos por Síndrome Respiratória Aguda Grave confirmados para influenza por município de residência e percentual dos vírus influenza identificados por região. Brasil, 2014 até a SE 46.

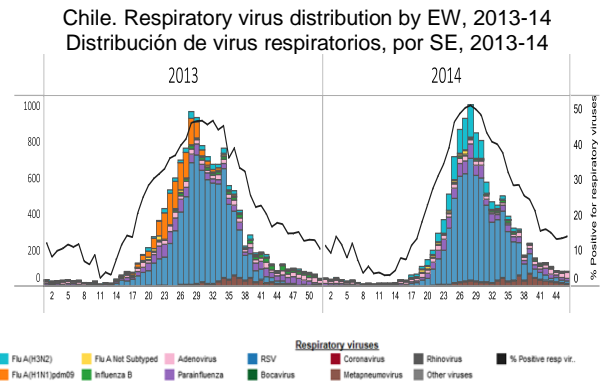
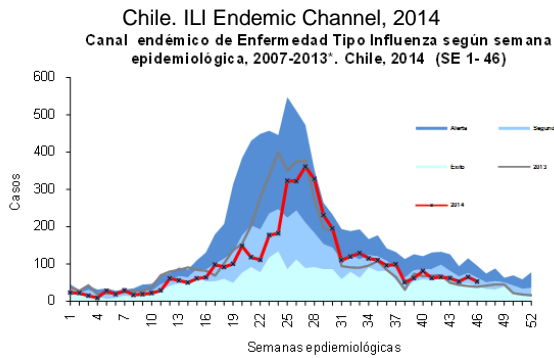


Fonte: SINAN Influenza Web. Dados atualizados em 18/11/2014, sujeitos a alteração.

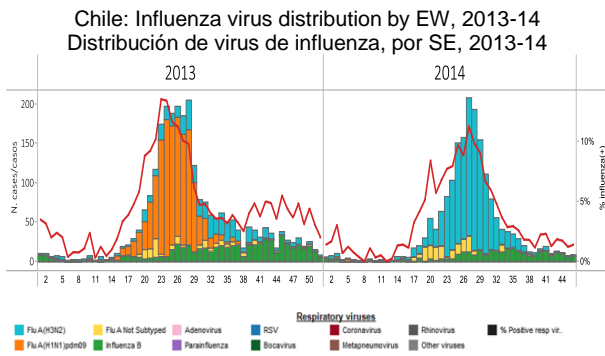
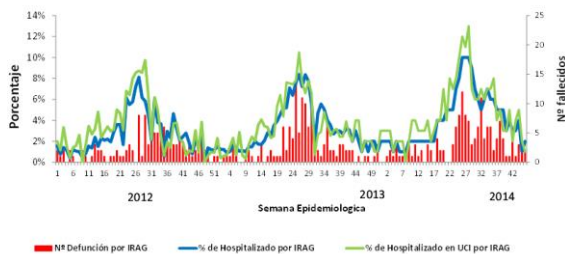
* O círculo é proporcional ao número de casos e óbitos. N = Norte; NE = Nordeste; SE = Sudeste; S = Sul; e CO = Centro Oeste.

Chile

- ILI / SARI activity within expected levels and with an downward trend / Actividad de ETI/IRAG dentro de niveles esperados y en tendencia decreciente
- Few respiratory virus detections in the last weeks / Pocas detecciones de virus respiratorios en las últimas semanas



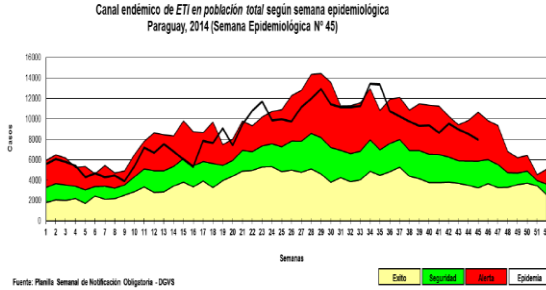
Chile. % SARI hospitalizations, ICU Adm and Deaths, 2012-14
 Porcentaje de hospitalizados, ingreso a UCI y número de fallecidos por IRAG según SE en Hospitales Centinela. Chile, 2012 - 2014 (*).



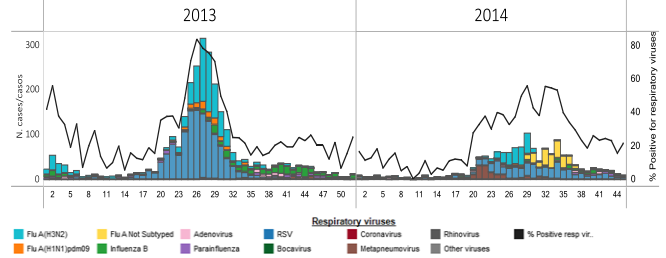
Paraguay

- ILI / SARI activity within expected levels / Actividad de ETI/IRAG dentro de niveles esperados
- Downward trend of respiratory virus detections / Tendencia decreciente en las detecciones de virus respiratorios

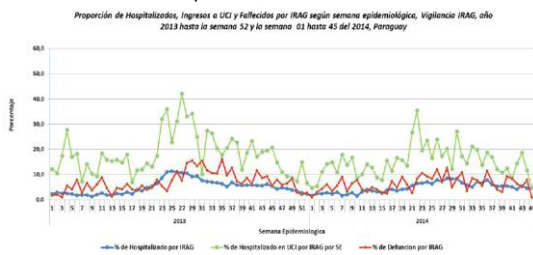
Paraguay. ILI endemic channel, by EW, 2014
Canal endémico de ETI por SE, 2014



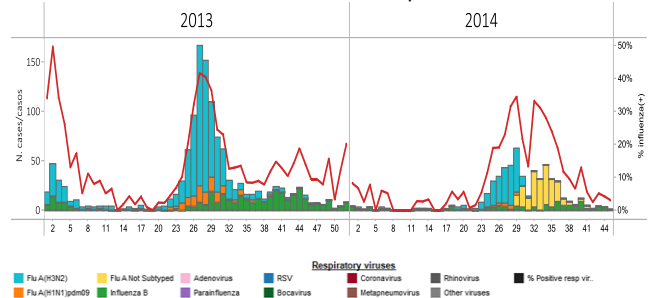
Paraguay. Respiratory virus distribution by EW, 2013-14
Distribución de virus respiratorios por SE, 2013-14



Paraguay: % SARI Hospitalizations, ICU Admissions & Deaths by EW 2013-14
Casos IRAG. Hospitalizaciones e ingresos en UCI & fallecidos (%) por SE, 2013-14



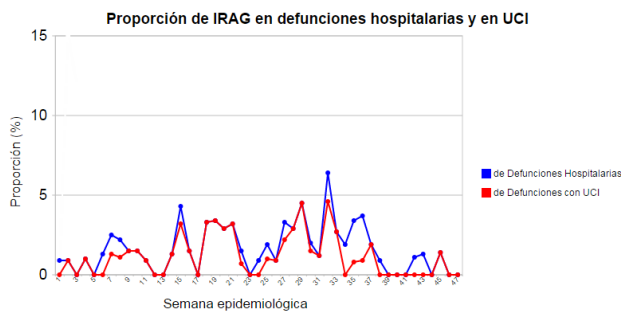
Paraguay: Influenza virus distribution by EW, 2013-14
Distribución de virus de influenza, por SE, 2013-14



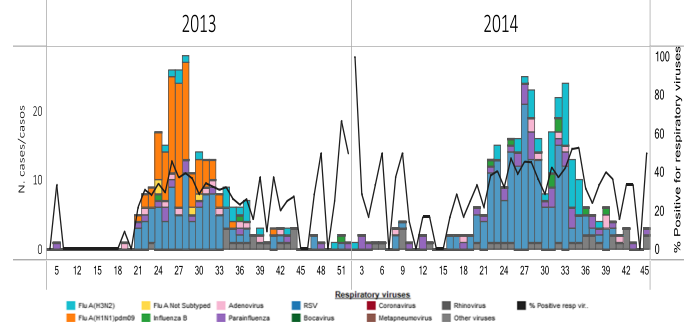
Uruguay

- SARI activity within expected levels / Actividad de IRAG dentro de niveles esperados
- Downward trend of respiratory virus detections / Tendencia decreciente en las detecciones de virus respiratorios

Uruguay: % SARI-associated hospitalizations & ICU admissions by EW, 2014
Proporción de IRAG en defunciones hospitalarias y en UCI



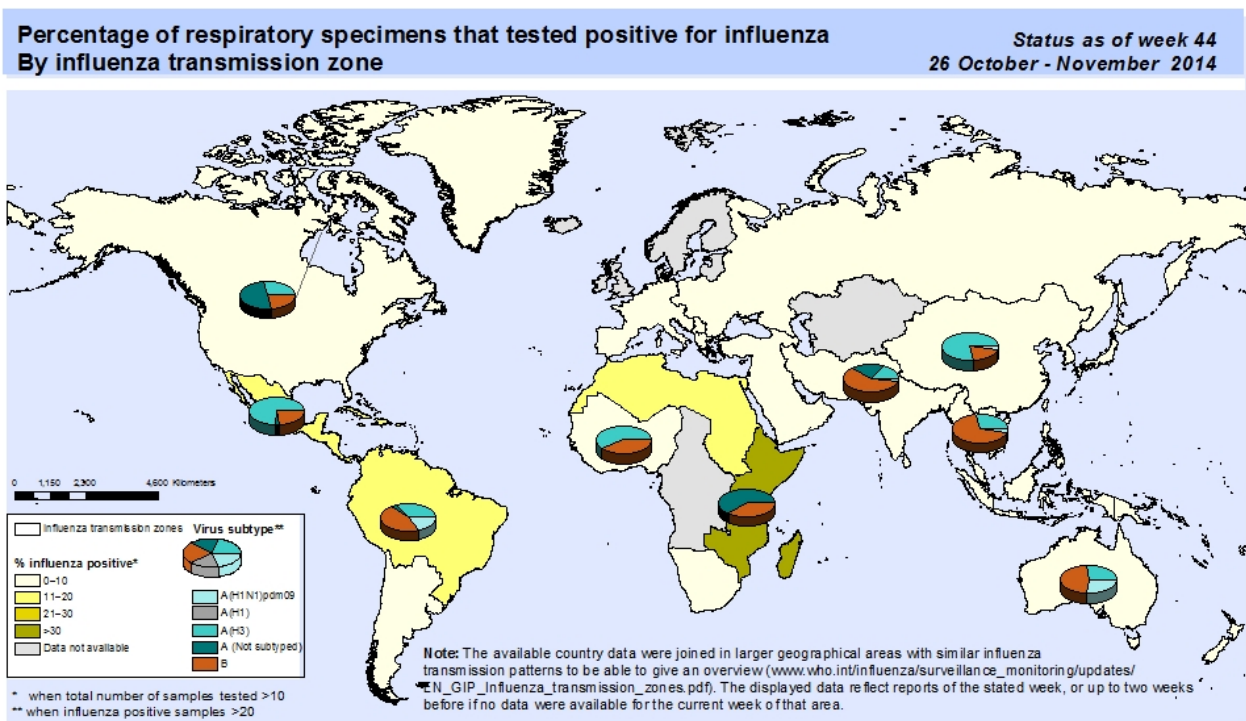
Uruguay: Respiratory virus distribution by EW, 2013-14
Distribución de virus respiratorios por SE 2013-14



Influenza global update / Actualización de influenza a nivel global

- Globally, as of EW 44 influenza activity remained low, with the exception of some Pacific Islands / A nivel global, a la SE 44 la actividad de influenza continua baja, con la excepción de algunas islas del Pacífico.
- The WHO GISRS laboratories tested more than 44,937 specimens; 1,978 were positive for influenza virus, of which 1,434 (72.5%) were typed as influenza A and 544 (27.5%) as influenza B. Of the sub-typed influenza A viruses, 60 (6.9%) were influenza A(H1N1)pdm09 and 813 (93.1%) were influenza A(H3N2). Of the characterized B viruses, 87 (96.7%) belonged to the B-Yamagata lineage and 3 (3.3%) to the B-Victoria lineage. / Los laboratorios del sistema de vigilancia global de influenza y respuesta (GISRS) de la OMS realizaron pruebas a más de 44.937 muestras: 1.978 fueron positivas a influenza, de las cuales 1.434 (72.5%) se tipificaron como influenza A y 544 (27.5%) como influenza B. De los virus sub-tipificados de influenza A, 60 (6.9%) fueron influenza A(H1N1)pdm09 y 813 (93.1%) influenza A(H3N2). De los virus influenza B caracterizados, 87 (96.7%) pertenecían al linaje B-Yamagata y 3 (3.3%) al linaje B-Victoria.

Nivel global: Porcentaje de muestras respiratorias positivas a influenza por zona de transmisión de influenza, SE 44, 2014



The boundaries and names shown and the designations used on this map do not imply the expression of any opinion whatsoever on the part of the World Health Organization concerning the legal status of any country, territory, city or area or of its authorities, or concerning the delimitation of its frontiers or boundaries. Dotted and dashed lines on maps represent approximate border lines for which there may not yet be full agreement.

Data Source: WHO/GIP, data in HQ as of 22 August 2014.
Data used are from FluNet (www.who.int/flu-net), 06:15 UTC snapshot, from WHO regional offices and/or ministry of health websites.

 **World Health Organization**
© WHO 2014. All rights reserved.

ACRONYMS

ARI	Acute respiratory infection
CARPHA	Caribbean Public Health Agency
CENETROP	Centro de Enfermedades Tropicales (Santa Cruz, Bolivia)
EW	Epidemiological Week
ILI	Influenza-like illness
INLASA	Instituto Nacional de Laboratorios de Salud (La Paz, Bolivia)
INS	Instituto Nacional de Salud
ORV	Other respiratory viruses
SARI	Severe acute respiratory infection
SEDES	Servicio Departamental de Salud (Bolivia)
ICU	Intensive Care Unit
RSV	Respiratory Syncytial Virus

ACRÓNIMOS

CARPHA	Caribbean Public Health Agency
CENETROP	Centro de Enfermedades Tropicales (Santa Cruz, Bolivia)
ETI	Enfermedad tipo influenza
INLASA	Instituto Nacional de Laboratorios de Salud (La Paz, Bolivia)
INS	Instituto Nacional de Salud
IRA	Infección respiratoria aguda
IRAG	Infección respiratoria aguda grave
OVR	Otros virus respiratorios
SE	Semana epidemiológica
SEDES	Servicio Departamental de Salud (Bolivia)
UCI	Unidad de Cuidados Intensivos
VSR	Virus sincitial respiratorio