

## Regional Update EW 41, 2014

Influenza and other respiratory viruses  
(October 21, 2014)

## Actualización Regional SE 41, 2014

Influenza y otros virus respiratorios  
(21 de octubre, 2014)

---

PAHO interactive influenza data  
Datos interactivos de influenza de la OPS:

[http://ais.paho.org/phis/viz/ed\\_flu.asp](http://ais.paho.org/phis/viz/ed_flu.asp)

Influenza Regional Reports:  
Informes regionales de influenza:

[www.paho.org/influenzareports](http://www.paho.org/influenzareports)  
[www.paho.org/reportesinfluenza](http://www.paho.org/reportesinfluenza)

*The information presented in this update is based on data provided by Ministries of Health and National Influenza Centers of Member States to the Pan American Health Organization (PAHO) or from updates on the Member States' Ministry of Health web pages.*

*La información presentada en esta actualización se obtiene a partir de los datos distribuidos por los Ministerios de Salud de los Estados Miembros y de los Centros Nacionales de Influenza de los Estados Miembros de la Organización Panamericana de la Salud (OPS) o de actualizaciones de los Ministerios de Salud de los Estados Miembros en sus páginas web.*

## WEEKLY SUMMARY (ENGLISH)

**North America:** Influenza activity has remained low in North America. In Canada, ILI activity has been above expected level for the last seven weeks but with low influenza detections and high detections of rhinovirus. In the United States, ILI activity has been below the national baseline and influenza A(not subtyped) and influenza B have predominated among the circulating influenza viruses. From mid-August to October 20, 2014, CDC or state public health laboratories have confirmed a total of 922 cases of Enterovirus D68 in 46 states and the District of Columbia. In Mexico, ARI activity is within the endemic channel and the proportions of SARI/ILI consultations among all consultations has been increasing throughout the country but remaining below 2%. There have been very few influenza detections in the last three weeks.

**Caribbean:** Respiratory virus activity remained low in the Caribbean, with exception of Puerto Rico. In Puerto Rico, ILI activity (as reported to CDC) was reported as moderate after being high last week, but influenza detections were low and decreasing and in Cuba SARI activity decreased after increasing for several weeks, with a predominance of RSV. Among respiratory viruses, circulation of influenza A(H3) (Puerto Rico) and RSV (Dominican Republic) were observed.

**Central America:** In Central America, respiratory virus activity was low and RSV predominated among circulating viruses (Guatemala, Honduras, Panama).

**Andean Region:** In the Andean sub-region, respiratory virus and SARI/ARI activity were low and within expected levels (Colombia) and RSV predominated (Colombia).

**Southern Cone:** In the Southern Cone, respiratory virus and SARI/ARI activity have been low and within expected levels (Brazil, Chile, Paraguay, Uruguay). Among respiratory viruses circulating, RSV has predominated (Argentina, Chile, Paraguay, Uruguay).

## RESUMEN SEMANAL (ESPAÑOL)

**América del Norte:** La actividad de influenza continúa baja en América del Norte. En Canadá, la actividad de ETI ha permanecido por encima de la línea basal durante las últimas siete semanas, pero con niveles de detección bajos de influenza y elevadas detecciones de rinovirus. En los Estados Unidos, la actividad de ETI ha estado por debajo de la línea basal nacional. Influenza A(no subtipificada) e influenza B han predominado entre los virus circulantes de influenza. Desde mediados de agosto y hasta el 20 de octubre de 2014, los Centros para el Control y la Prevención de Enfermedades (CDC) o los laboratorios de salud pública estatales han confirmado 922 casos de Enterovirus D68 en 46 estados y el Distrito de Columbia. En México, la actividad de IRA está dentro del canal endémico y de entre todas las consultas, las proporciones de consultas por IRAG/ETI se han incrementado en todo el país, sin embargo se mantienen por debajo del 2%. Durante las últimas tres semanas, ha habido muy pocas detecciones de influenza.

**Caribe:** La actividad de los virus respiratorios se mantiene baja en el Caribe, con la excepción de Puerto Rico. En Puerto Rico, la actividad de ETI (de acuerdo al CDC) se reporta como moderada después de haber estado alta la semana anterior, pero con detecciones bajas de influenza y con tendencia decreciente. En Cuba, la actividad de IRAG ha disminuido tras el aumento registrado en varias semanas y con un predominio de VSR. Entre los virus respiratorios, se observa la circulación de influenza A(H3) (Puerto Rico) y VSR (República Dominicana).

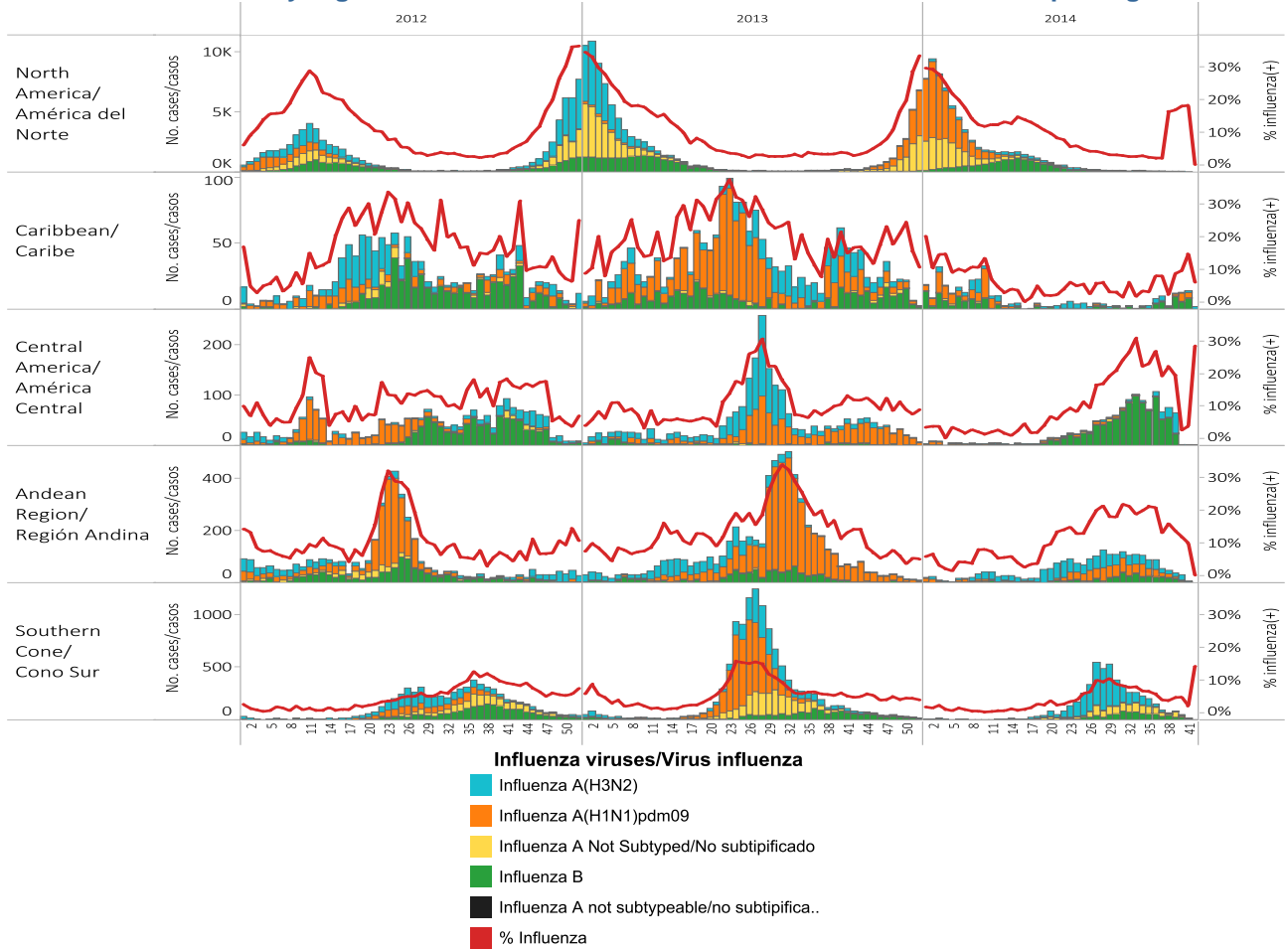
**América Central:** En América Central, la actividad de virus respiratorios es baja y VSR ha predominado entre los virus circulantes (Guatemala, Honduras, Panamá).

**Región Andina:** En la subregión Andina, la actividad de los virus respiratorios y de IRAG/IRA permaneció baja, dentro de los niveles esperados (Colombia) y con predominio de VSR (Colombia).

**Cono Sur:** En el Cono Sur, la actividad de los virus respiratorios e IRAG/IRA permaneció baja y dentro de los niveles esperados (Brasil, Chile, Paraguay, Uruguay). VSR ha predominado entre los virus respiratorios circulantes (Argentina, Chile, Paraguay, Uruguay).

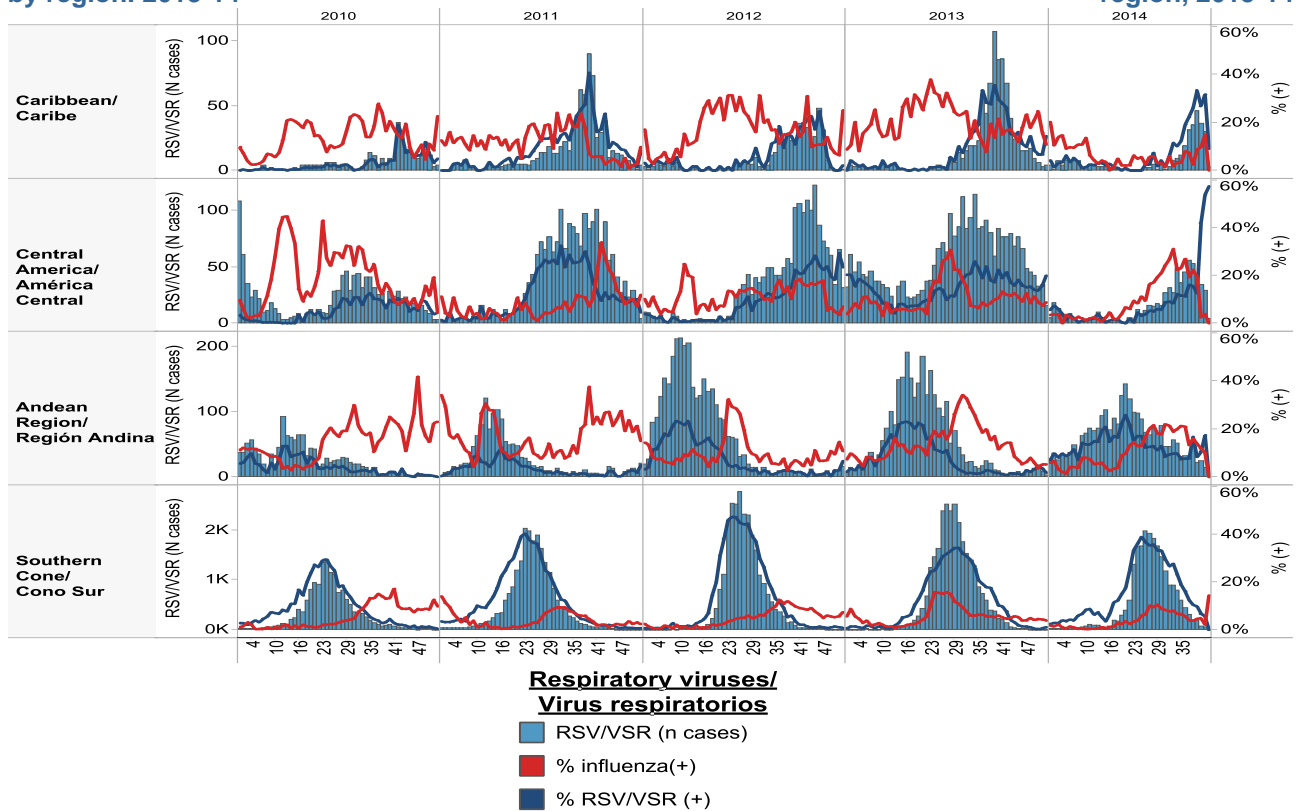
### Influenza circulation by region. 2013-14

### Circulación virus influenza por región 2013-14



### Respiratory syncytial virus (RSV) circulation by region. 2013-14

### Circulación de virus sincital respiratorio por región, 2013-14



## ACRONYMS

<b>ARI</b>	Acute respiratory infection
<b>CARPHA</b>	Caribbean Public Health Agency
<b>CENETROP</b>	Centro de Enfermedades Tropicales (Santa Cruz, Bolivia)
<b>EW</b>	Epidemiological Week
<b>ILI</b>	Influenza-like illness
<b>INLASA</b>	Instituto Nacional de Laboratorios de Salud (La Paz, Bolivia)
<b>INS</b>	Instituto Nacional de Salud
<b>ORV</b>	Other respiratory viruses
<b>SARI</b>	Severe acute respiratory infection
<b>SEDES</b>	Servicio Departamental de Salud (Bolivia)
<b>ICU</b>	Intensive Care Unit
<b>RSV</b>	Respiratory Syncytial Virus

## ACRÓNIMOS

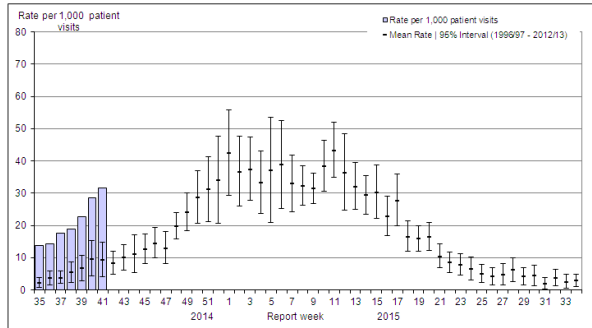
<b>CARPHA</b>	Caribbean Public Health Agency
<b>CENETROP</b>	Centro de Enfermedades Tropicales (Santa Cruz, Bolivia)
<b>ETI</b>	Enfermedad tipo influenza
<b>INLASA</b>	Instituto Nacional de Laboratorios de Salud (La Paz, Bolivia)
<b>INS</b>	Instituto Nacional de Salud
<b>IRA</b>	Infección respiratoria aguda
<b>IRAG</b>	Infección respiratoria aguda grave
<b>OVR</b>	Otros virus respiratorios
<b>SE</b>	Semana epidemiológica
<b>SEDES</b>	Servicio Departamental de Salud (Bolivia)
<b>UCI</b>	Unidad de Cuidados Intensivos
<b>VSR</b>	Virus sincitial respiratorio

**North America/América del Norte:**

**Canada**

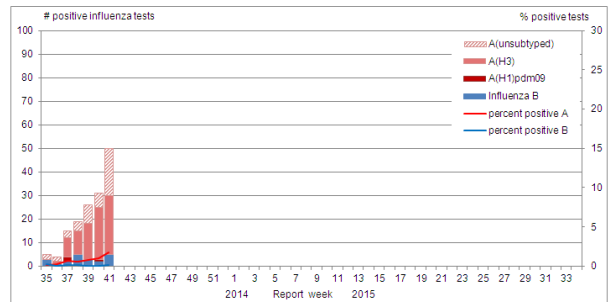
**Canada: ILI Consultation Rates, by EW, 2014-15**  
**Tasa de consultas de ETI, por SE, 2014-15**

**Figure 5. Influenza-like-illness (ILI) consultation rates by report week, compared to the 1996-97 through to 2012-13 seasons (with pandemic data suppressed), Canada, 2014-2015**

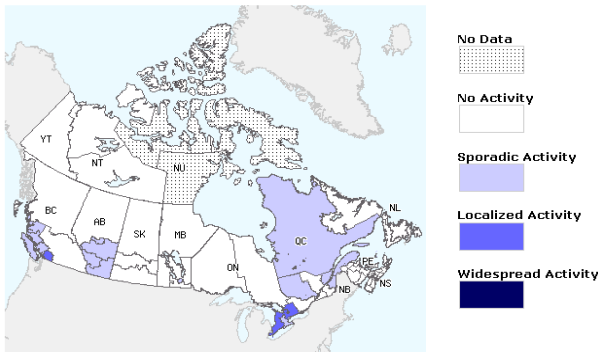


**Canada: Influenza virus distribution by EW, 2014-15**  
**Distribución de virus de influenza por SE, 2014 -15**

**Figure 2. Number of positive influenza tests and percentage of tests positive, by type, subtype and report week, Canada, 2014-15**

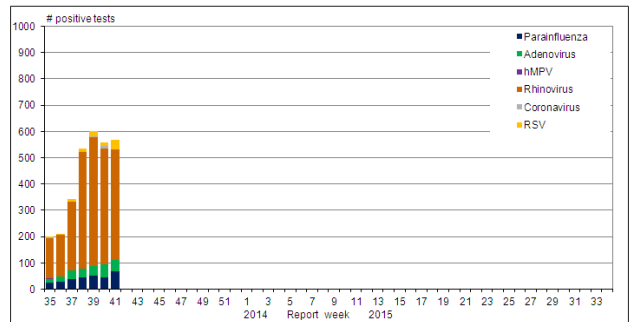


**Canada: Influenza/ILI Activity by region, EW 40, 2014**  
**Actividad de influenza/ETI por provincia & territorio, SE 40, 2014**  
**Figure 1. Map of overall influenza/ILI activity level by province and territory, Canada, Week 41**

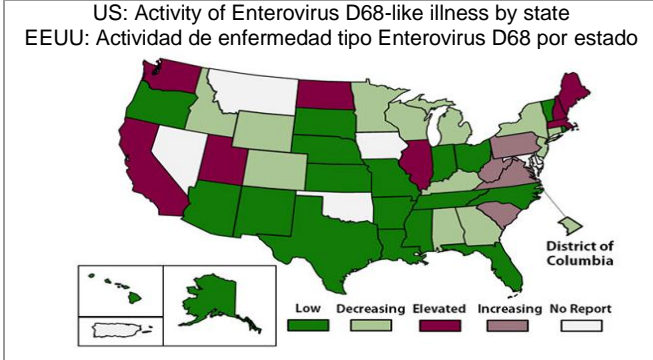
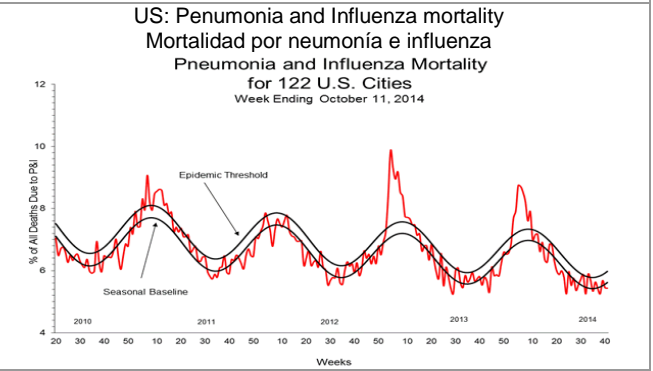
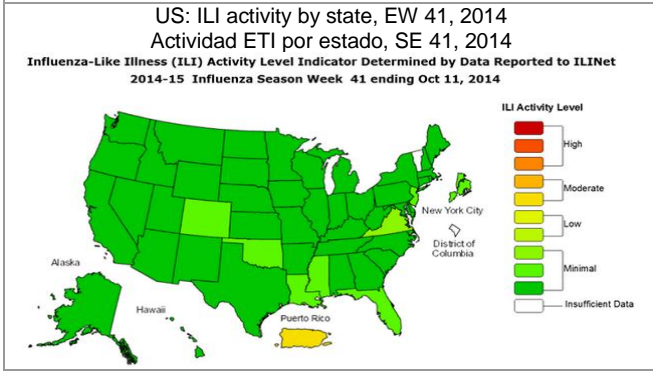
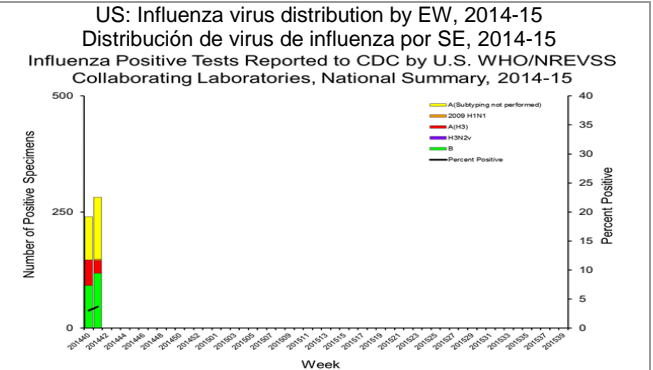
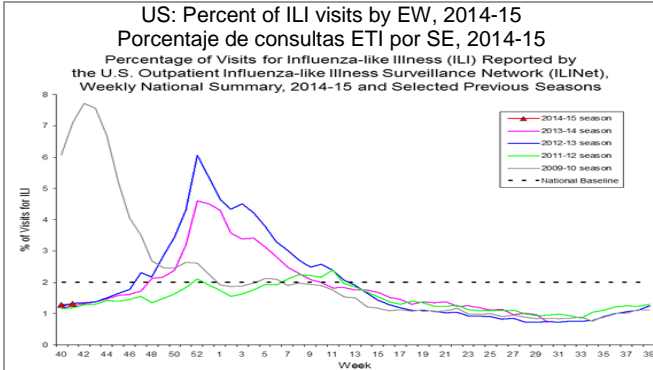


**Canada: Other respiratory virus distribution by EW, 2014-15**  
**Distribución de virus respiratorios por SE, 2014 -15**

**Figure 3. Number of positive laboratory tests for other respiratory viruses by report week, Canada, 2014-15**

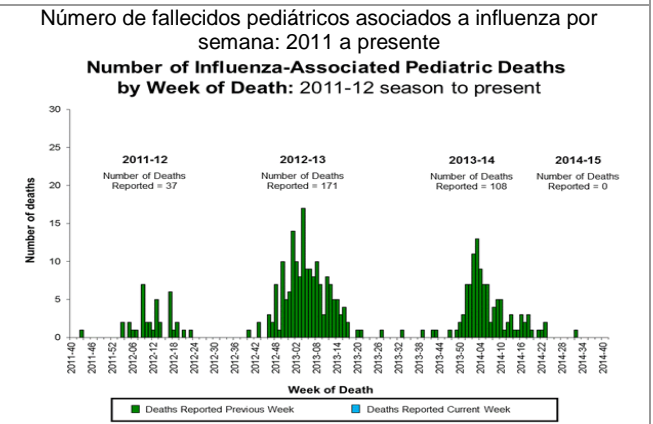
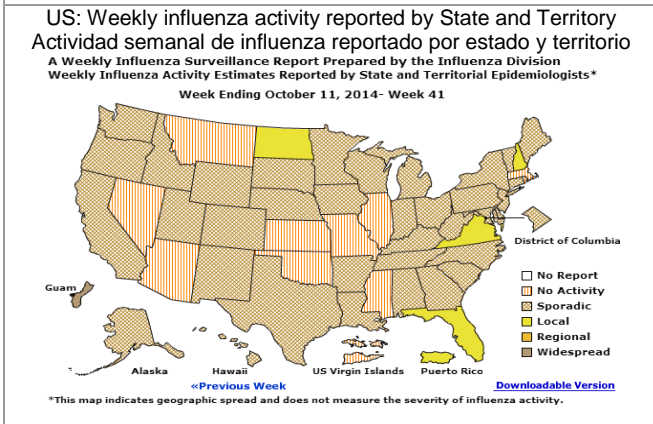


## United States



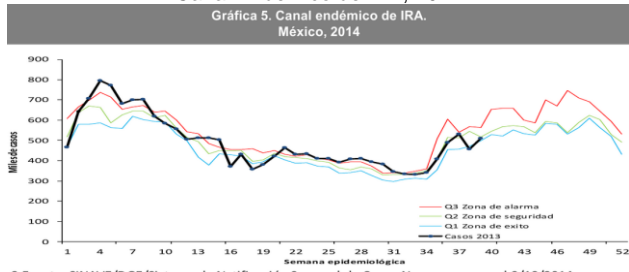
For the week of October 5-11, 2014, 44 states and the District of Columbia have submitted assessments to CDC of activity of EV-D68-like illness.

- 32 states and the District of Columbia reported low or declining activity
- 12 states reporting increasing or elevated activity

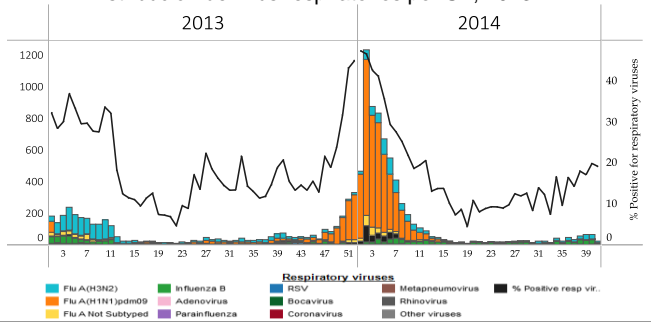


## Mexico

Mexico: ARI Endemic Channel, 2014  
 Canal Endémico de IRA, 2014

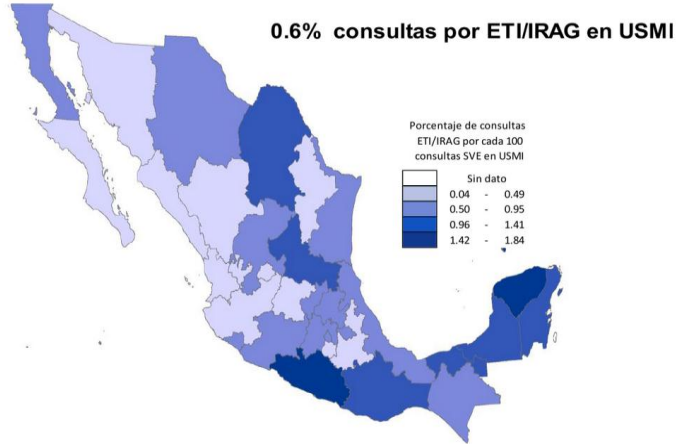


Mexico: Respiratory virus distribution by EW 2013-14  
 Distribución de virus respiratorios por SE, 2013-14



Mexico: Proportion of ILI/SARI visits, EW41, 2014  
 Proporción de consultas por ETI/IRAG, SE41, 2014

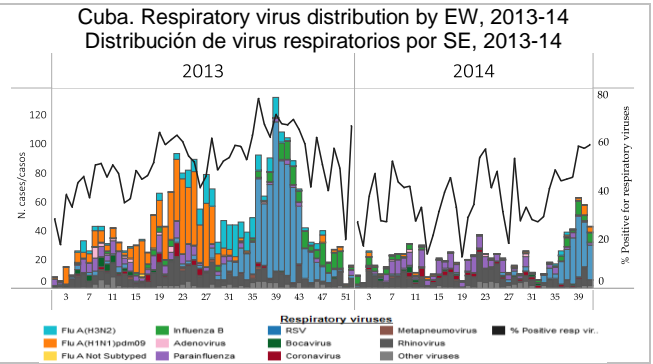
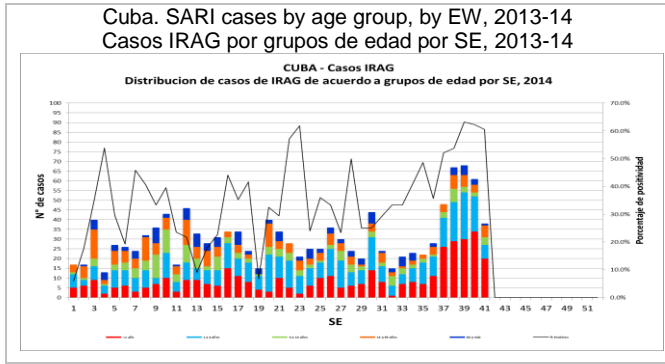
Figura 1. Proporción de consultas por ETI/IRAG en USMI según entidad federativa. México, 2014



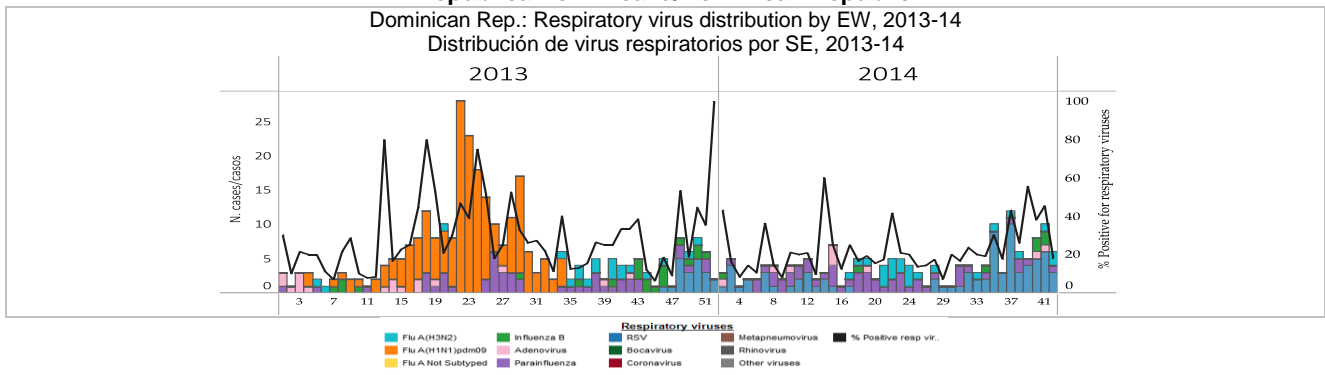
1.Fuente: SINAVE/DGE/Sistema de Vigilancia Epidemiológica de Influenza, acceso al 9/10/2014.

2.Fuente: SINAVE/DGE/Sistema de Notificación Semanal de Casos Nuevos, acceso al 9/10/2014

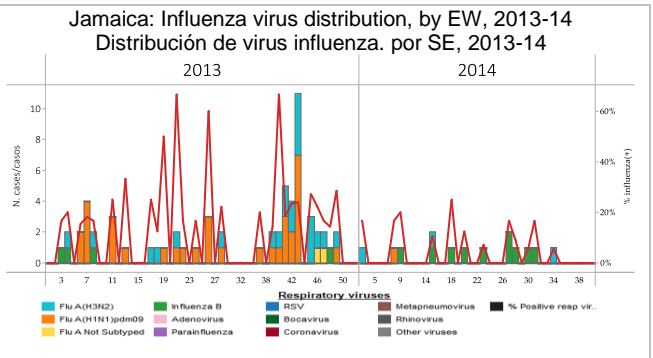
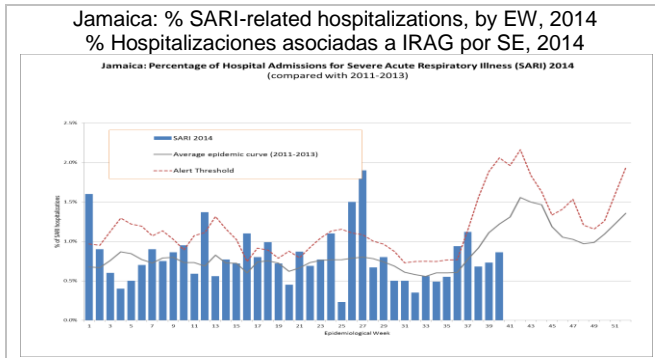
Cuba



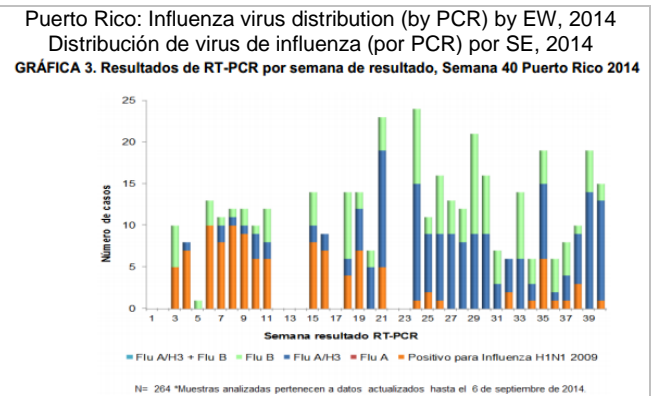
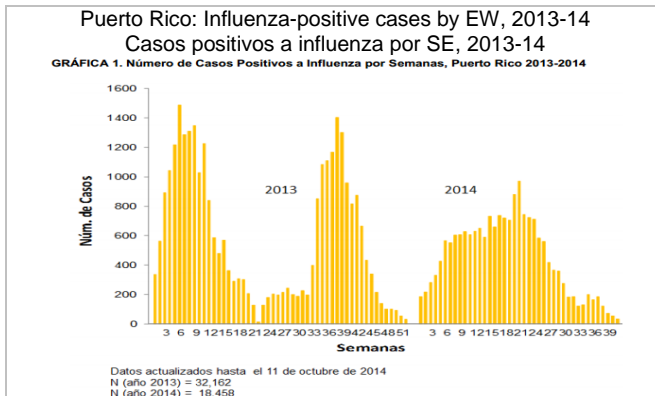
República Dominicana/Dominican Republic



Jamaica



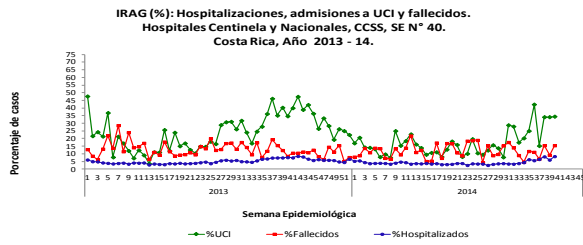
Puerto Rico



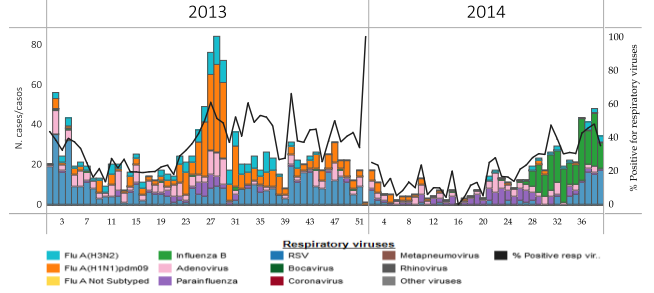


Costa Rica

Costa Rica: Proportion of SARI-Associated Hospitalizations, ICU Admissions and Deaths, by EW, 2013-14  
 Proporción de hospitalizaciones, admisiones UCI y fallecidos asociadas a IRAG, por SE, 2013-14

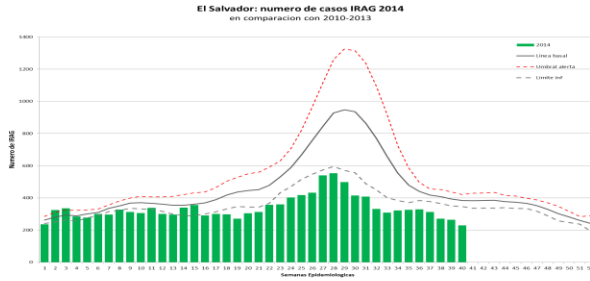


Costa Rica: Respiratory virus distribution, by EW, 2013-14  
 Distribución de virus respiratorios. por SE, 2013-14

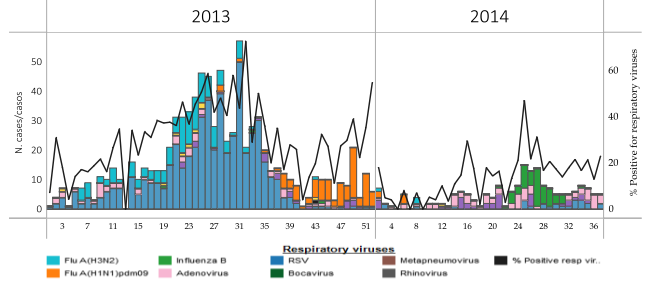


El Salvador

El Salvador: Number of SARI cases, by EW, 2014  
 Número de casos IRAG, por SE, 2014

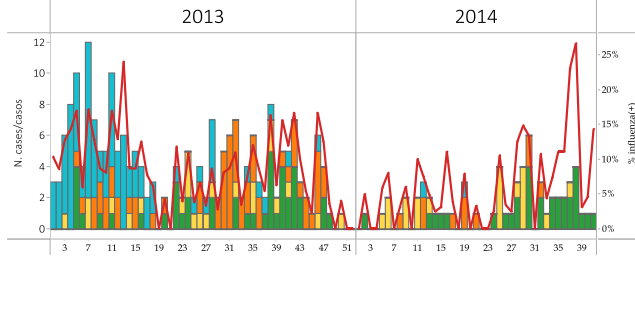


El Salvador: Respiratory virus distribution, by EW, 2013-14  
 Distribución de virus respiratorios. por SE, 2013-14

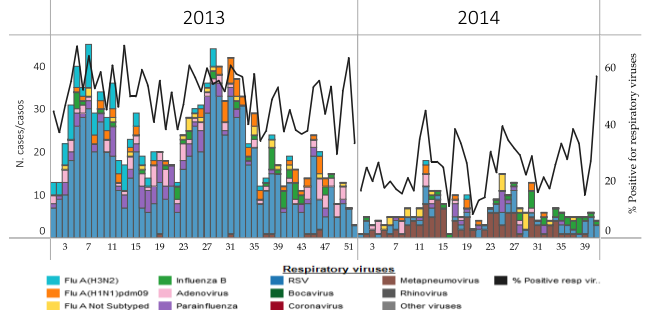


Guatemala

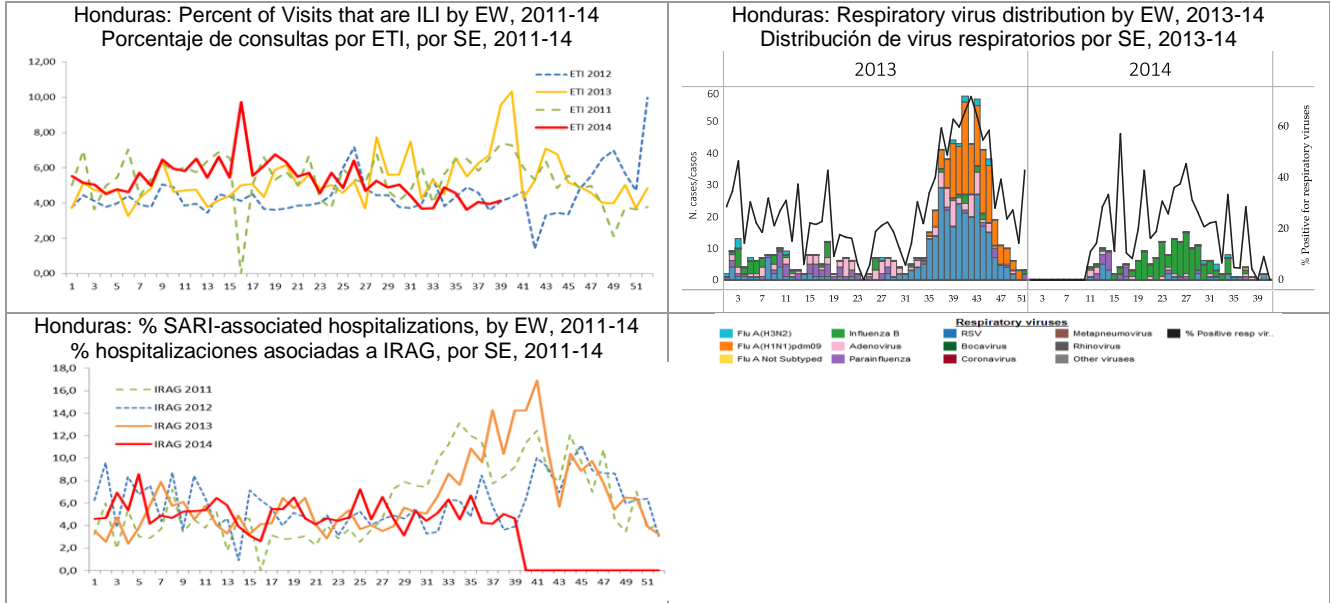
Guatemala: Influenza virus distribution, by EW, 2014  
 Distribución de virus influenza, por SE, 2014



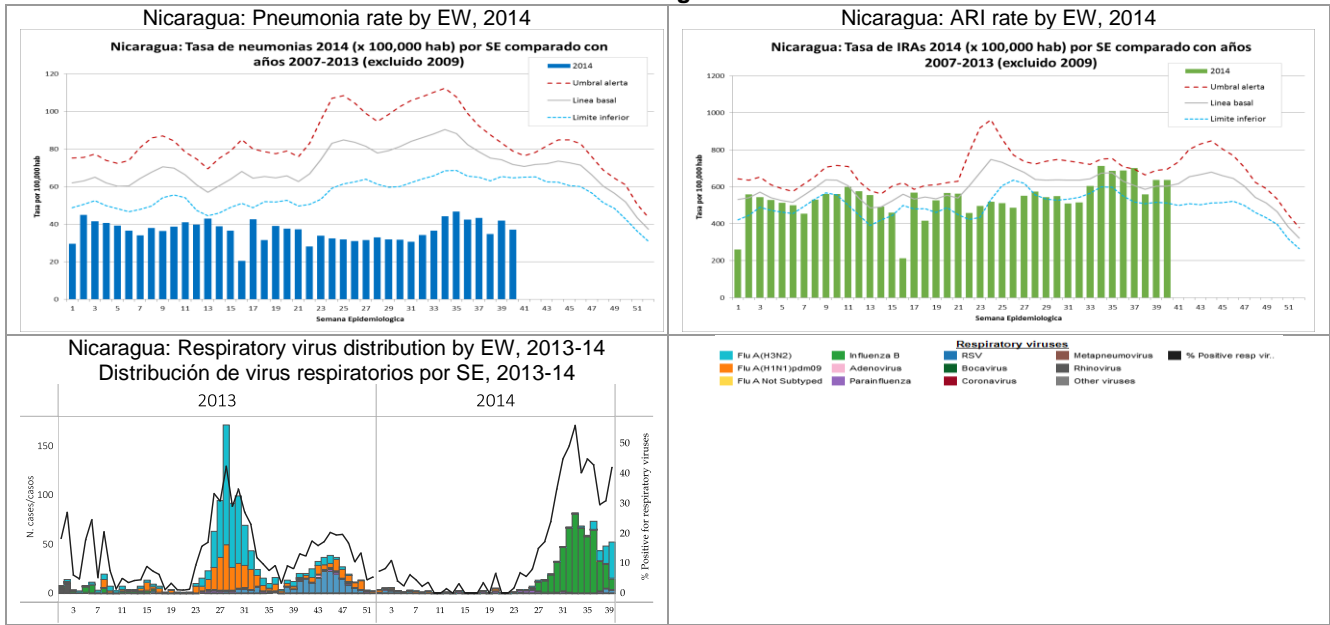
Guatemala: Respiratory virus distribution by EW, 2013-14  
 Distribución de virus respiratorios por SE, 2013-14



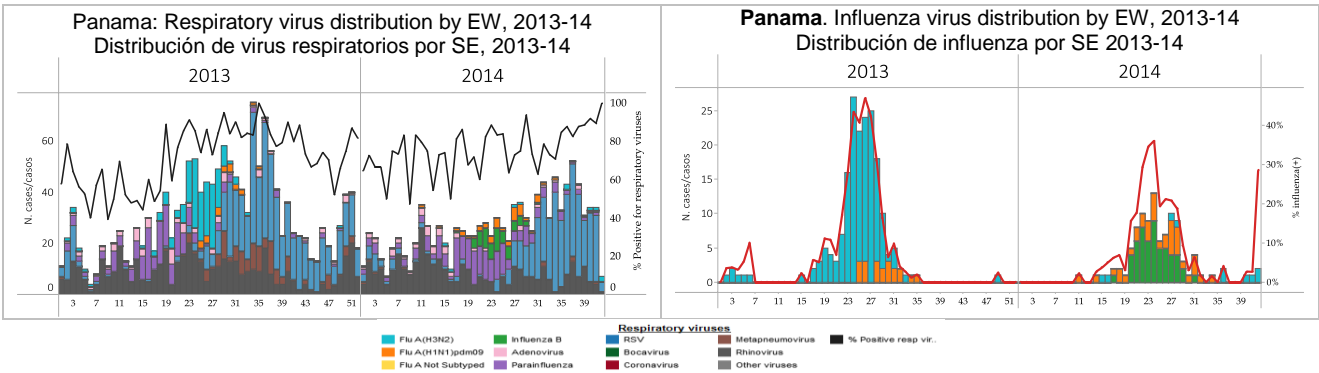
### Honduras



### Nicaragua

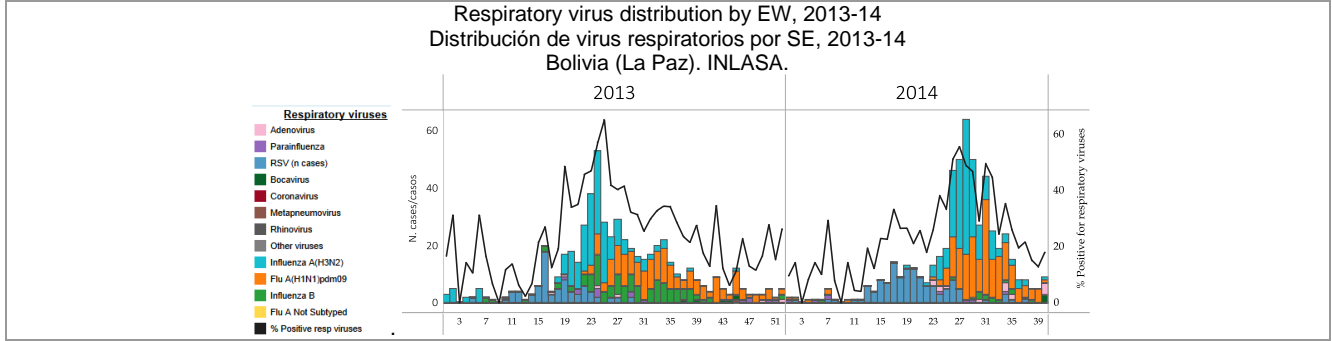


### Panama



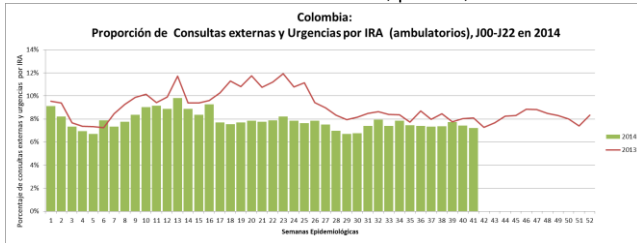
**Bolivia**

Respiratory virus distribution by EW, 2013-14  
Distribución de virus respiratorios por SE, 2013-14  
Bolivia (La Paz). INLASA.

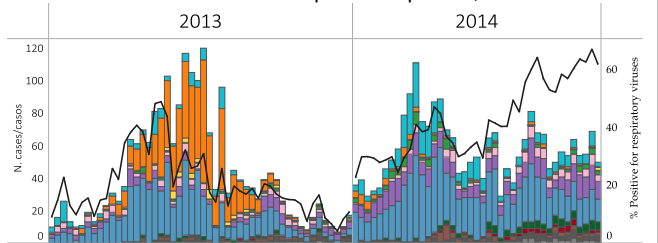


**Colombia**

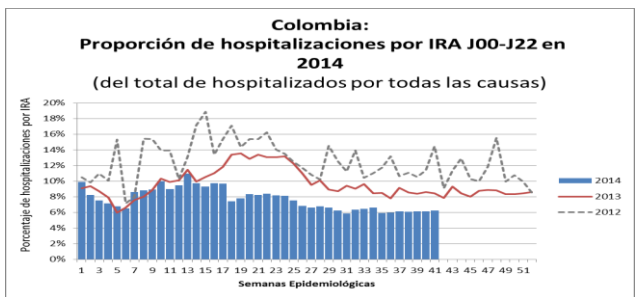
Colombia: ARI outpatient Visits with J00-J20 codes, by EW, 2014  
IRA ambulatoria con J00-J20, por SE, 2014



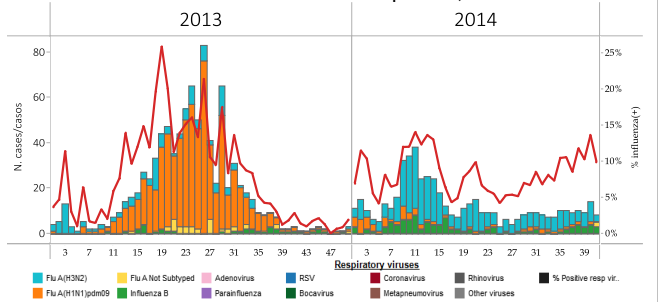
Colombia: Respiratory virus distribution by EW, 2013-14  
Distribución de virus respiratorios por SE, 2013-14



Colombia: % Hospitalizations with J00 to J20 codes, by EW 2014

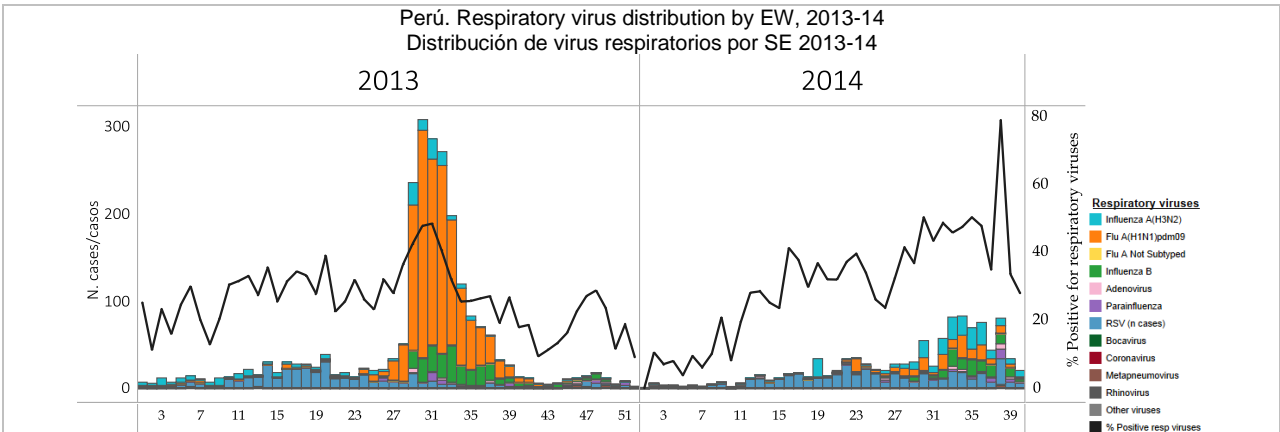


Colombia. Influenza virus distribution by EW, 2013-14  
Distribución de virus influenza por SE, 2013-14

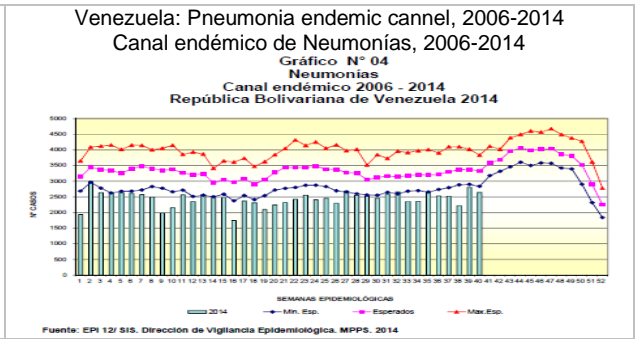
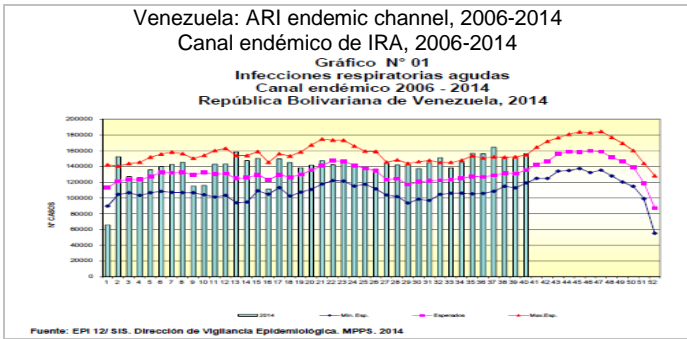


**Peru**

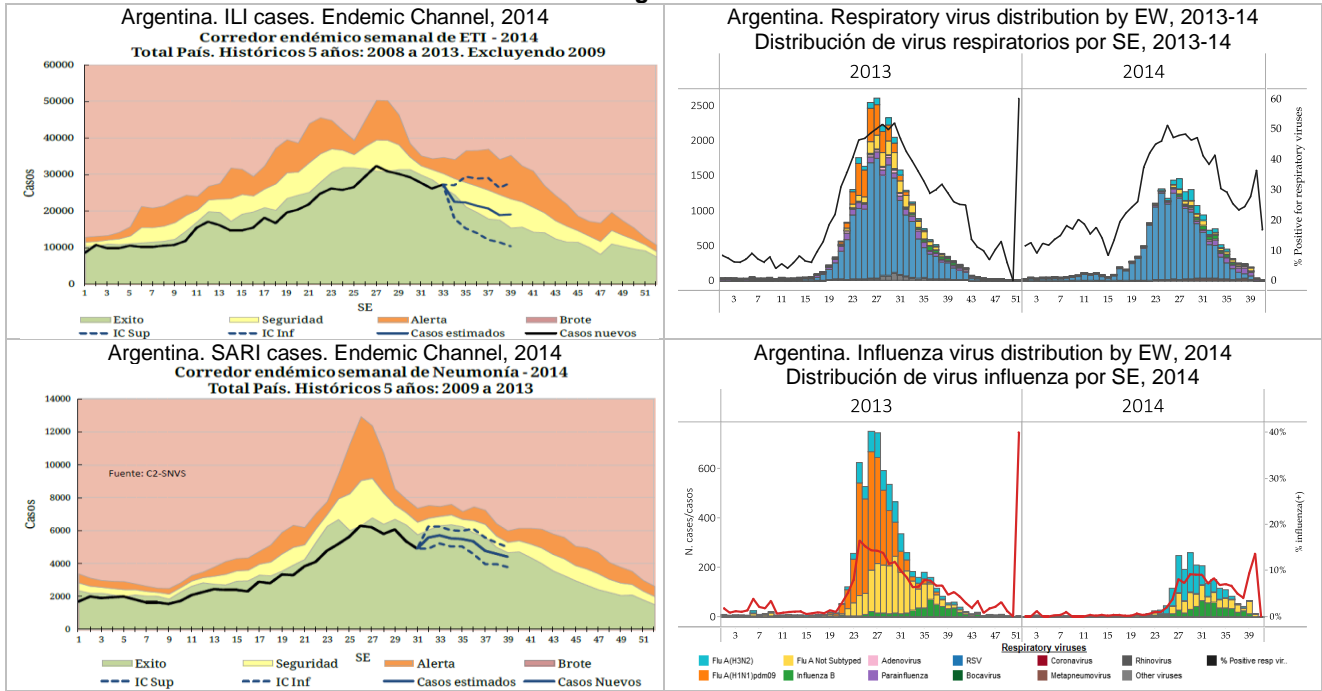
Perú. Respiratory virus distribution by EW, 2013-14  
Distribución de virus respiratorios por SE 2013-14



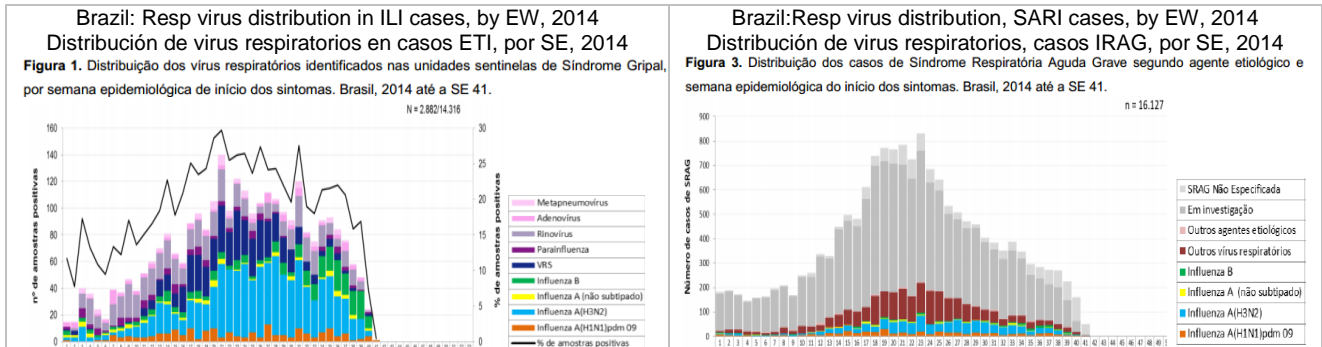
Venezuela



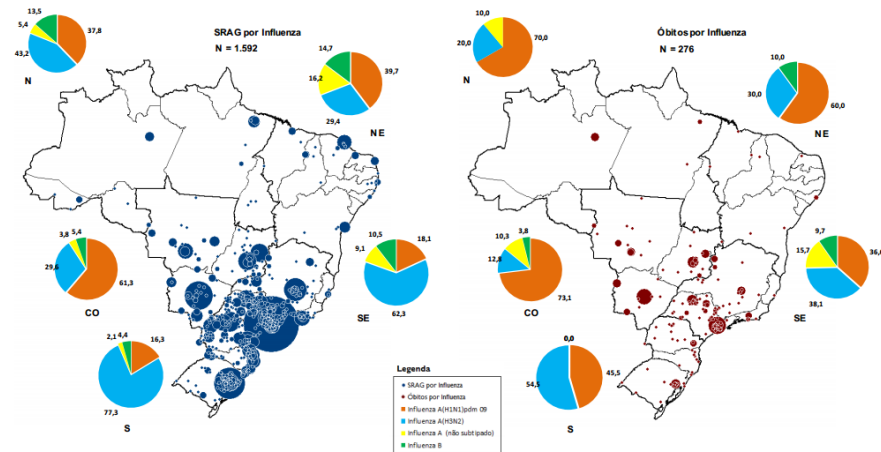
Argentina



Brazil

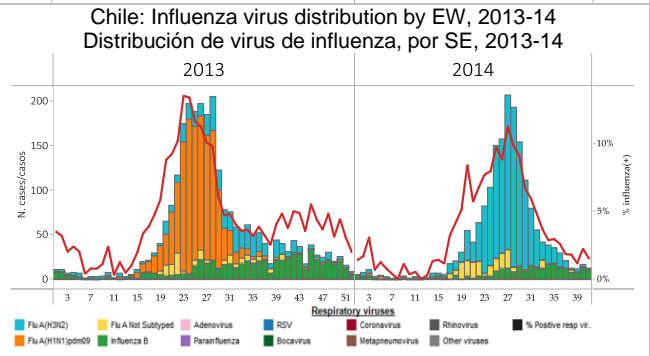
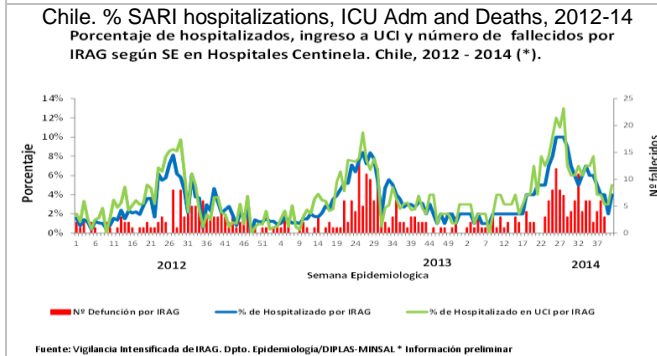
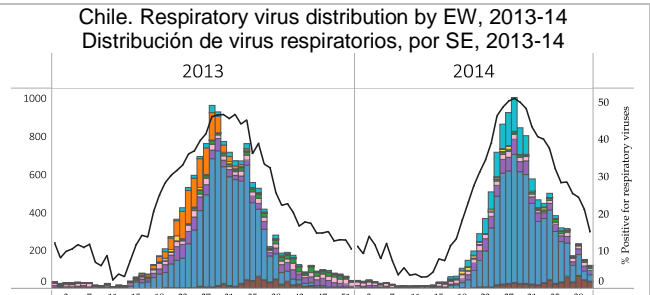
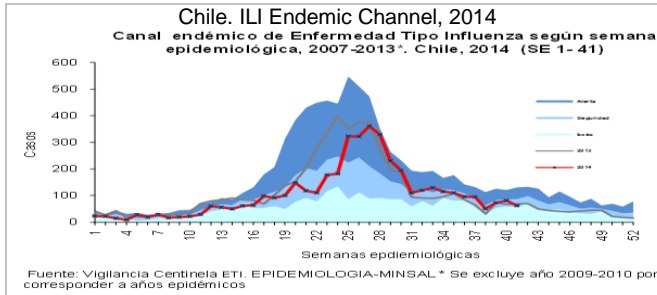


**Brazil: Distribution of SARI hospitalizations and deaths by municipality and influenza type/subtype by region**  
Distribuição de hospitalizações e falecidos por IRAG por município e tipo/subtipo de influenza por região  
Anexo 4. Distribuição espacial dos casos e óbitos por Síndrome Respiratória Aguda Grave confirmados para influenza por município de residência e percentual dos vírus influenza identificados por região. Brasil, 2014 até a SE 41.

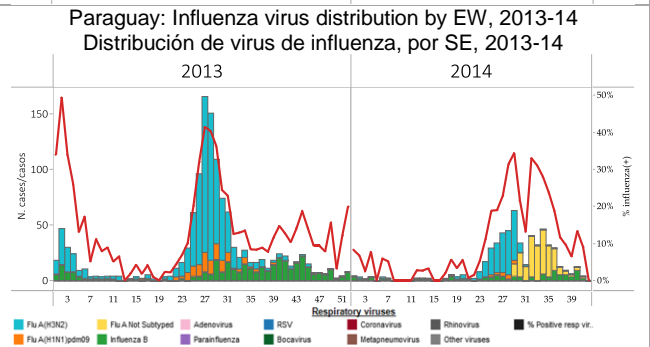
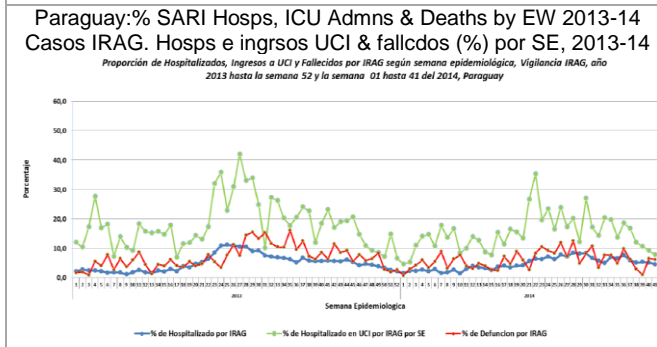
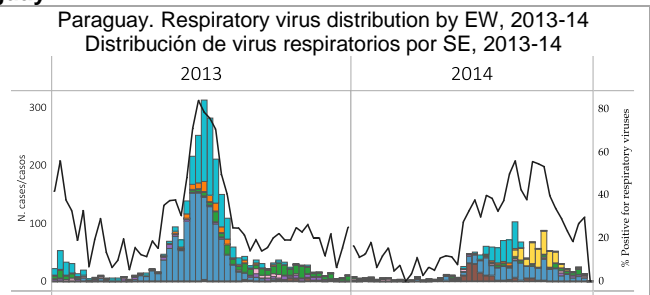
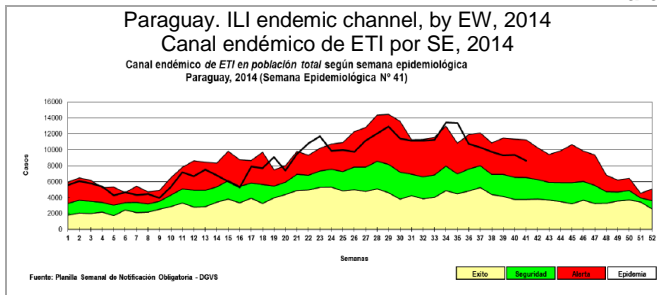


Fonte: SINAN Influenza Web. Dados atualizados em 14/10/2014, sujeitos a alteração.  
\* O círculo é proporcional ao número de casos e óbitos. N = Norte; NE = Nordeste; SE = Sudeste; S = Sul; e CO = Centro Oeste.

## Chile



## Paraguay



## Uruguay

