



Regional Update EW 52, 2014
Influenza and other respiratory virus
(January 6, 2015)

Actualización Regional SE 52, 2014
Influenza y otros virus respiratorios
(6 de enero, 2015)

PAHO interactive influenza data
Datos interactivos de influenza de la OPS:

http://ais.paho.org/hip/viz/ed_flu.asp

Influenza Regional Reports:
Informes regionales de influenza:

www.paho.org/influenzareports
www.paho.org/reportesinfluenza

The information presented in this update is based on data provided by Ministries of Health and National Influenza Centers of Member States to the Pan American Health Organization (PAHO) or from updates on the Member States' Ministry of Health web pages.

La información presentada en esta actualización se obtiene a partir de los datos distribuidos por los Ministerios de Salud de los Estados Miembros y de los Centros Nacionales de Influenza de los Estados Miembros de la Organización Panamericana de la Salud (OPS) o de actualizaciones de los Ministerios de Salud de los Estados Miembros en sus páginas web.

WEEKLY SUMMARY (ENGLISH)

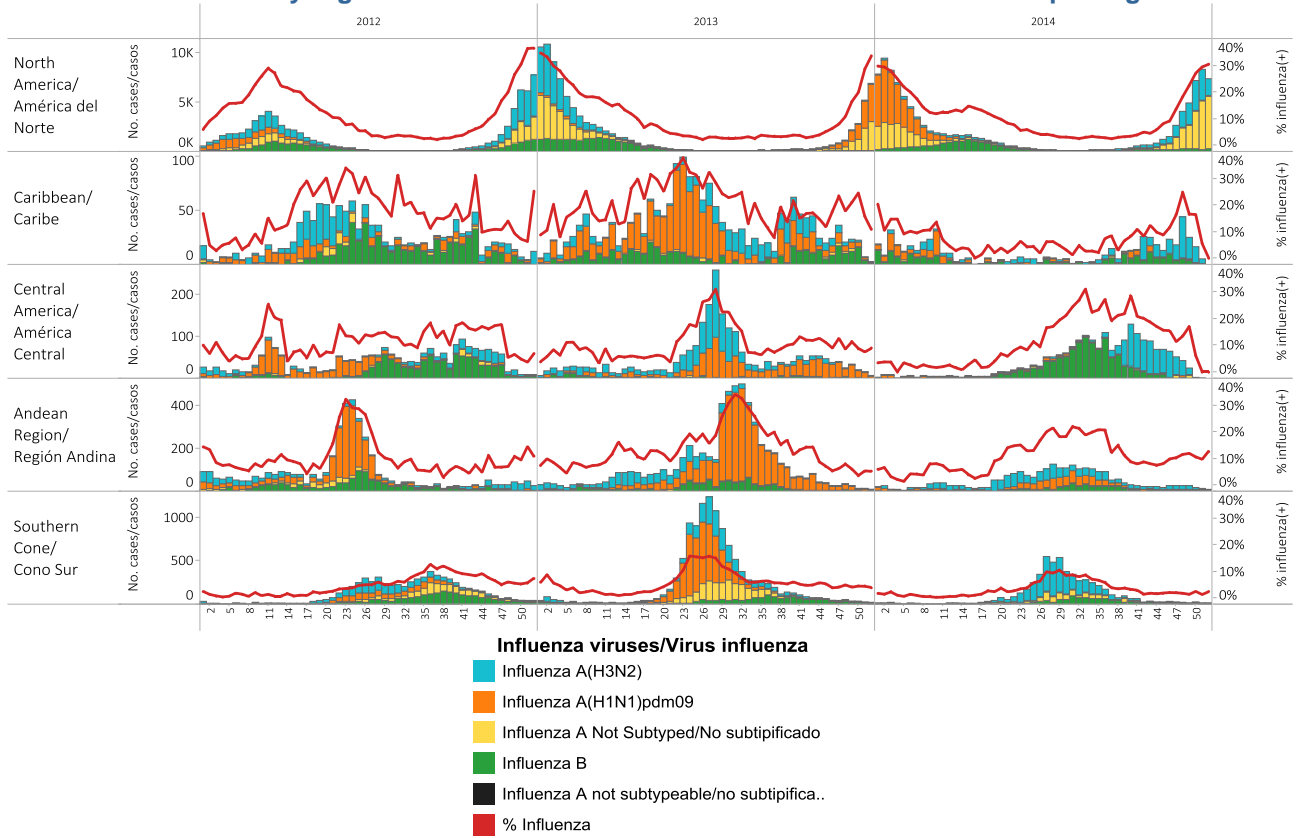
- **North America:** Influenza activity continued to increase. In Canada, ILI activity during EW 51 was below expected levels and widespread influenza activity was reported in eight regions. Influenza detections (29.1% positivity) continued to increase and influenza A(H3N2) and influenza A (not subtyped) have predominated among circulating influenza viruses. Thirty-one of the thirty-seven influenza A(H3N2) viruses characterized were antigenically similar to A/Switzerland/9715293/2013, the influenza A(H3N2) virus selected for the 2015 Southern Hemisphere vaccine, but which differs from the current Northern Hemisphere vaccine strain, A/Texas/50/2012. Detections of RSV have continued to increase since EW 44. Influenza hospitalizations have continued to increase since EW 46 with the majority among those ≥ 65 years of age and laboratory-confirmed outbreaks of influenza continued to increase with the majority recorded in long-term care facilities. In the United States, ILI activity (5.9%) was above the national baseline (2.2%) and during EW 52, widespread influenza activity was reported by 43 states. Influenza detections have continued to increase (30.4% positivity) and influenza A (not subtyped) and influenza A(H3) have predominated among the circulating influenza viruses. One hundred eighty-three (68.3%) of the 268 influenza A(H3N2) viruses characterized showed either reduced titers or belonged to a genetic group that typically shows reduced titers to A/Texas/50/2012. Most viruses that showed reduced titers were antigenically similar to A/Switzerland/9715293/2013, the influenza A(H3N2) virus selected for the 2015 Southern Hemisphere vaccine. Six influenza-associated pediatric deaths were reported this week and the pneumonia and influenza mortality percentage remained below the epidemic threshold of 6.9%. The overall hospitalization rate was 12.6 per 100,000 population with the highest rate among adults aged ≥ 65 years (51.8 per 100,000) and the majority (94%) of hospitalized adults had at least one reported underlying medical condition. Overall, hospitalization rates in all age groups are comparable to the rates seen during the 2012-13 season (H3 predominant season), in terms of magnitude and timing. In Mexico, ARI activity remained within the endemic channel and the proportions of SARI/ILI consultations remained below 1%. The states with the highest pneumonia rate this week were Colima, Jalisco, Nuevo Leon, Sonora and Zacatecas.
- **Caribbean:** Respiratory virus activity remained low with the exception of Puerto Rico, where ILI activity (as reported to CDC) continued to be high; however influenza detections have been low and stable. Among respiratory viruses, circulation of influenza B (Jamaica) was reported.
- **Central America:** Respiratory virus activity remained low and ARI, ILI and SARI were within expected levels (Honduras, Nicaragua).
- **Andean Sub-region:** Respiratory virus activity remained low. In Colombia, ARI/SARI activity remained within expected levels and respiratory virus detections have been decreasing since EW 49 with a predominance of parainfluenza and influenza A(H3N2). In Peru, respiratory virus detections continued to decrease.
- **Southern Cone:** Respiratory virus activity and ILI/SARI activity have continued to decrease and there have been very few influenza and other respiratory virus detections in the last weeks (Argentina, Chile and Uruguay).

RESUMEN SEMANAL (ESPAÑOL)

- **América del Norte:** La actividad de influenza continúa aumentando. En Canadá, la actividad de ETI durante la SE 51 estaba por debajo de niveles esperados y ocho regiones reportaron actividad diseminada de influenza. Las detecciones de influenza (29,1% de positividad) continúan incrementando e influenza A(H3N2) e influenza A (no subtipificada) han predominado entre los virus influenza circulantes. Treinta y uno de los treinta y siete virus influenza A(H3N2) caracterizados fueron antigénicamente similares a A/Switzerland/9715293/2013, el virus influenza A(H3N2) seleccionado para la vacuna del hemisferio sur para el 2015, pero difiere de la actual cepa seleccionada para la vacuna 2014-2015 del hemisferio norte, A/Texas/50/2012. Las detecciones de VSR continúan aumentando desde la SE 44. Las hospitalizaciones por influenza continúan aumentando desde la SE 46 y la mayoría se registra en el grupo de ≥ 65 años. Los brotes de influenza confirmados por laboratorio continúan aumentando y la mayoría se registran en los servicios de atención a adultos mayores. En los Estados Unidos, la actividad de ETI (5,9%) se encuentra por encima de la línea basal (2,2%) y durante la SE 52, 43 estados reportaron actividad diseminada de influenza. Las detecciones de influenza continúan aumentando (30,4% de positividad) e influenza A (no subtipificada) e influenza A(H3) han predominado entre los virus circulantes de influenza. Ciento ochenta y tres (68,3%) de los 268 virus influenza A(H3N2) caracterizados mostraron títulos reducidos pertenecían a un grupo genético que normalmente muestra títulos reducidas a A/Texas/50/2012. La mayoría de los virus que mostraron títulos reducidos fueron antigénicamente similares a A/Switzerland/9715293/2013, el virus influenza A(H3N2) seleccionada para la vacuna del hemisferio sur para el 2015. Seis defunciones pediátricas asociada a influenza se registraron esta semana y la mortalidad por neumonía e influenza continúa por debajo del umbral epidémico del 6,9%. La tasa global de hospitalización fue de 12,6 por 100.000 habitantes, siendo la tasa más alta la registrada entre los adultos ≥ 65 años (51,8 por 100.000) y la mayoría (94%) de los adultos hospitalizados reportó tener al menos una patología médica de base. En general, en términos de magnitud y temporalidad las tasas de hospitalización en todos los grupos de edad son comparables a las tasas observadas durante la temporada 2012-13 (temporada predominante H3). En México, la actividad de IRA continúa dentro del canal endémico y las proporciones de consultas por IRAG/ETI se mantienen por debajo del 1%. Los estados con las tasas mas altas de neumonía esta semana fueron Colima, Jalisco, Nuevo León, Sonora y Zacatecas.
- **Caribe:** La actividad de virus respiratorios continúa baja con la excepción de Puerto Rico, donde la actividad de ETI (de acuerdo al CDC) continua elevada, pero con detecciones de influenza bajas y estables. Entre los virus respiratorios, se observa la circulación de influenza B (Jamaica).
- **América Central:** La actividad de virus respiratorios continúa baja y la actividad de IRA, ETI/IRAG se encuentra dentro de niveles esperados (Honduras, Nicaragua).
- **Sub-región Andina:** La actividad de virus respiratorios continúa baja. En Colombia, la actividad de IRA/IRAG se encuentra dentro de niveles esperados y las detecciones de virus respiratorios han disminuidos desde la SE 49, con predominio de parainfluenza e influenza A(H3N2). En Perú, las detecciones de virus respiratorios continúan disminuyendo.
- **Cono Sur:** La actividad de virus respiratorios y de IRAG/IRA continúa Descendiendo y en las últimas semanas, han habido muy pocas detecciones de influenza y otros virus respiratorios (Argentina, Chile, Uruguay).

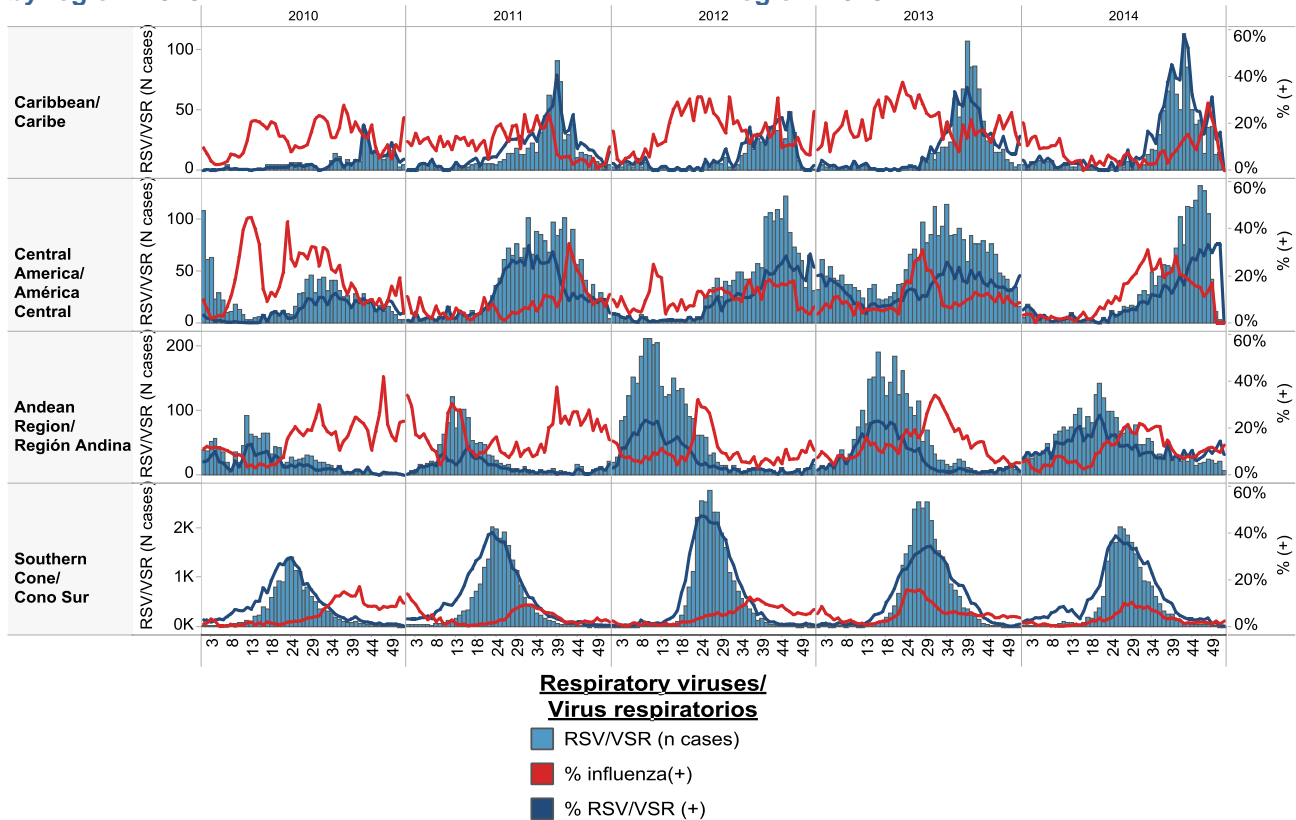
Influenza circulation by region. 2012-14

Circulación virus influenza por región. 2012-14



Respiratory syncytial virus (RSV) circulation by region. 2010-14

Circulación de virus sincital respiratorio por región. 2010-14



Weekly and cumulative numbers of influenza and other respiratory virus, by country and EW, 2014
 Número semanal y acumulado de influenza y otros virus respiratorios, por país y SE, 2014

		EW 49-52, 2014 / SE 49-52, 2014												
		N samples/muestras	% Positive/Positividad	Influenza A (H3N2)	Influenza A (H1N1)pdm09	Influenza A Not Subtyped/No subtipificado	Influenza B	Adenovirus	Parainfluenza	RSV/RSR	Bocavirus	Coronavirus	Metapneumovirus	Rhinovirus
North America/ América del ...	Mexico	668	31.7	137	0	8	61	0	0	0				
	United States of America	99,650	27.5	9,821	27	16,550	965							
Caribbean/ Caribe	Cuba	222	48.2	32	0	0	3	0	2	46	5	0	1	16
	Dominican Republic	14	35.7				0		3	2				
	Jamaica	70	12.9	0	1	0	4	0	1	1	0	1	1	0
Central America/ América Central	Costa Rica	84	47.6	10	2	6	0	2	0	20				
	El Salvador	32	40.6	1	0	0	0	0	0	12				
	Guatemala	1	0.0	0	0	0	0	0	0	0	0	0	0	0
	Panama	67	83.6	6	1		0	1	1	24			10	13
Andean Region/ Región Andina	Bolivia - CENETROP	13	0.0	0	0	0	0	0	0	0				
	Bolivia - INLASA	52	15.4				1	1	5	1				
	Colombia	275	51.3	20	5	0	18	12	21	32	6	5	12	5
	Ecuador	115	40.0	13			1		6	24			2	
	Peru	139	19.4	3	3	0	2	1	10	6	0	0	2	0
Brazil & Southern Cone/ Cono Sur	Argentina	995	5.6	0	0	0	1	6	33	5			11	
	Brazil	465	4.5	7	2	0	12							
	Chile	1,529	7.8	2	2	2	21	52	22	9			12	
	Paraguay	171	25.1	2	0	0	16	13	0	12	0	0	0	0
	Uruguay	6	33.3	0	0	0	0	0	0	1				
Grand Total		104,568	27.0	10,054	41	16,566	1,105	88	104	195	11	6	51	34

		Cumulative, EW 1-52, 2014 / Acumulado, SE 1-52, 2014												
		N samples/ muestras	% Positive/ Positividad	Influenza A (H3N2)	Influenza A (H1N1)pdm09	Influenza A Not Subtyped/No subtipificado	Influenza B	Adenovirus	Parainfluenza	RSV/RSR	Bocavirus	Coronavirus	Metapneumovirus	Rhinovirus
North America/ América del Norte	Canada	198,119	14	1,393	8,510	9,990	7,487							
	Mexico	27,407	27	1,306	4,332	290	1,019	25	14	42				
	United States of America	476,903	16	17,656	18,581	31,058	9,552							
Caribbean/ Caribe	CARPHA	1,046	15	17	40	7	23	7	11	49	1	1		3
	Cuba	3,352	42	119	38	0	120	10	214	444	30	55	9	289
	Dominican Republic	888	22	24			11	10	59	90				
	Haiti	145	11	10	0	0	6							
	Jamaica	534	4	3	1	0	16	0	1	1	0	1	1	0
Central America/ América Central	Costa Rica	3,352	35	201	36	6	241	117	103	474				
	El Salvador	1,767	19	8	7	3	55	77	40	142				
	Guatemala	1,371	32	18	11	32	48	18	22	171	0	0	119	0
	Honduras	1,510	18	57	0	0	126	18	24	45				
	Nicaragua	4,733	26	412	9		567	1	31	222				
	Panama	1,747	77	42	42		55	48	198	534			39	393
Andean Region/ Región Andina	Bolivia - CENETROP	2,916	27	276	215	0	32	31	50	176				
	Bolivia - INLASA	2,010	29	194	199		19	16	21	130	3		1	
	Colombia	6,785	43	424	70	0	151	201	494	1,148	136	59	110	97
	Ecuador	3,737	23	52	32		103	45	88	504			9	
	Peru	3,494	32	235	174	0	157	47	74	427	0	0	20	0
Brazil & Southern Cone/ Cono Sur	Argentina	59,684	33	1,108	16	666	531	459	1,853	14,481			631	
	Brazil	10,559	16	988	344	0	407							
	Chile	39,897	29	1,368	16	183	315	933	1,249	6,874			782	
	Paraguay	4,793	30	396	26	47	148	69	67	510	0	0	160	0
	Uruguay	847	36	44	0	0	8	10	39	170				
Grand Total		857,596	19	26,351	32,699	42,282	21,197	2,142	4,652	26,634	170	116	1,881	782

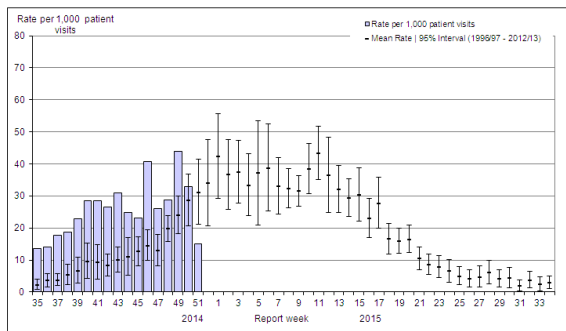
North America / América del Norte:

Canada

- ILI activity was below expected levels / La actividad de ETI estuvo por debajo de niveles esperados
- Influenza detections (29.1% positivity this week) continued to increase / Las detecciones de influenza (29,1% de positividad esta semana) continúan incrementando
- Widespread influenza/ILI activity was reported in eight regions / Actividad diseminada de influenza/ETI reportada en ocho regiones
- Influenza A(H3N2) and influenza A (not subtyped) have predominated among circulating influenza virus / Influenza A(H3N2) e influenza A (no subtipificada), han predominado entre los virus influenza circulantes
- RSV detections has been increased since EW 40 / Las detecciones de VSR se han incrementado desde la SE40

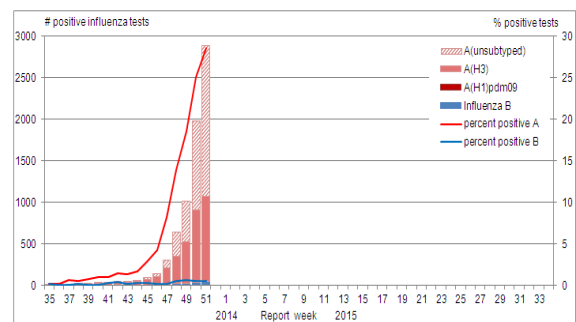
Canada: ILI Consultation Rates, by EW, 2014-15
Tasa de consultas de ETI, por SE, 2014-15

Figure 5. Influenza-like-illness (ILI) consultation rates by report week, compared to the 1996-97 through to 2012-13 seasons (with pandemic data suppressed), Canada, 2014-2015



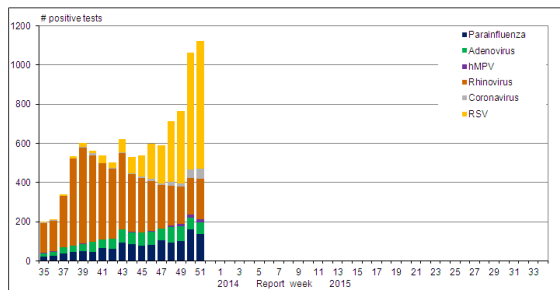
Canada: Influenza virus distribution by EW, 2014-15
Distribución de virus de influenza por SE, 2014 -15

Figure 2. Number of positive influenza tests and percentage of tests positive, by type, subtype and report week, Canada, 2014-15



Canada: Other respiratory virus distribution by EW, 2014-15
Distribución de virus respiratorios por SE, 2014 -15

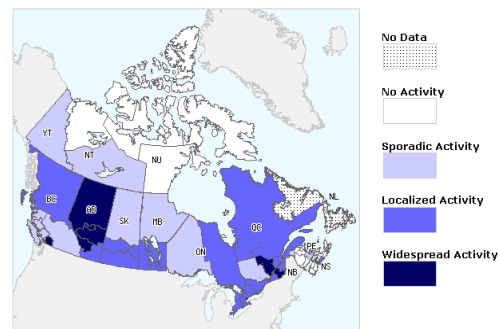
Figure 3. Number of positive laboratory tests for other respiratory viruses by report week, Canada, 2014-15



RSV: Respiratory syncytial virus; hMPV: Human metapneumovirus

Canada: Influenza/ILI Activity by region, EW 50, 2014
Actividad de Influenza/ETI por provincia/territorio, SE 50, 2014

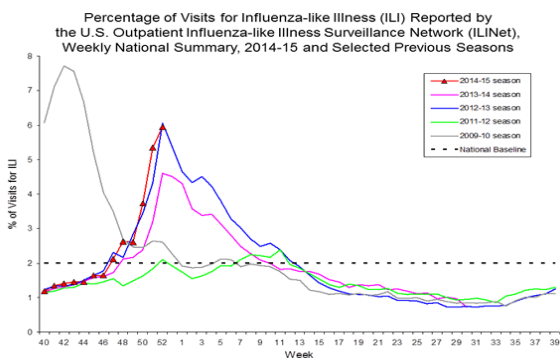
Figure 1. Map of overall influenza/ILI activity level by province and territory, Canada, Week 51



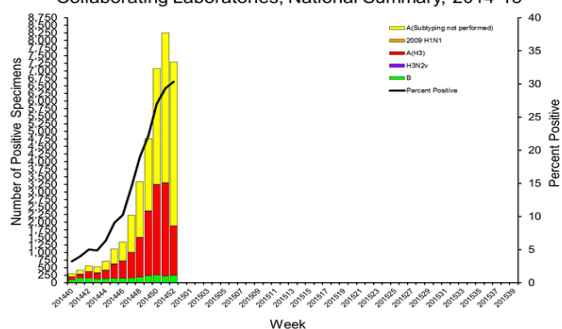
United States

- ILI activity (5.9%) continued to increase and is at a high level, similar to the peak recorded during the season 2012-2013 / La actividad de ETI (5,9%) continua aumentando y se encuentra en un nivel alto, similar al registrado durante el pico de la estación 2012-2013
- Influenza detections (30.4% of positivity this week) continued to increase / Las detecciones de influenza (30,4% de positividad esta semana) continúan incrementando
- Widespread influenza activity was reported in 43 states / Actividad diseminada de influenza reportada en 43 estados
- Influenza A (not subtyped) and influenza A(H3) have predominated / Influenza A (no subtipificada) e influenza A(H3) han predominado
- RSV detections has been increased since EW 39 / Las detecciones de VSR se han incrementado desde la SE 39
- Pneumonia and influenza mortality was below the epidemic threshold of 6.9% / La mortalidad por neumonía e influenza estaba por debajo del umbral epidémico del 6,9%

US: Percent of ILI visits by EW, 2014-15
Porcentaje de consultas ETI por SE, 2014-15

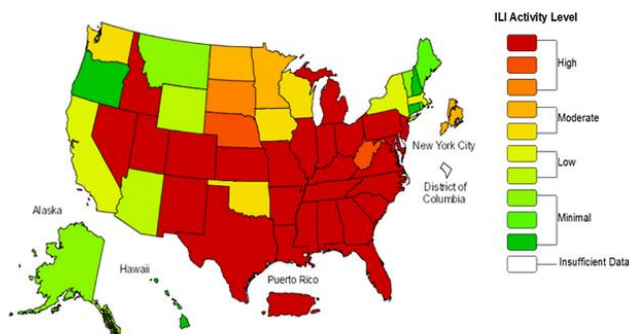


US: Influenza virus distribution by EW, 2014-15
Distribución de virus de influenza por SE, 2014-15
Influenza Positive Tests Reported to CDC by U.S. WHO/NREVSS Collaborating Laboratories, National Summary, 2014-15



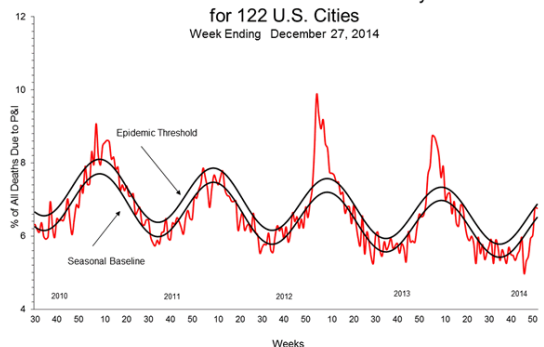
US: ILI activity by state, EW 52, 2014
Actividad ETI por estado, SE 52, 2014

Influenza-Like Illness (ILI) Activity Level Indicator Determined by Data Reported to ILINet
2014-15 Influenza Season Week 52 ending Dec 27, 2014



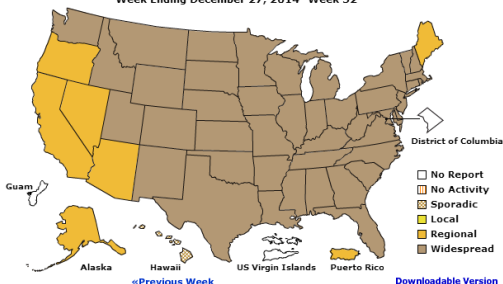
US: Pneumonia and influenza mortality
Mortalidad por neumonía e influenza

Pneumonia and Influenza Mortality for 122 U.S. Cities
Week Ending December 27, 2014



US: Weekly influenza activity reported by State and Territory
Actividad semanal de influenza reportado por estado y territorio

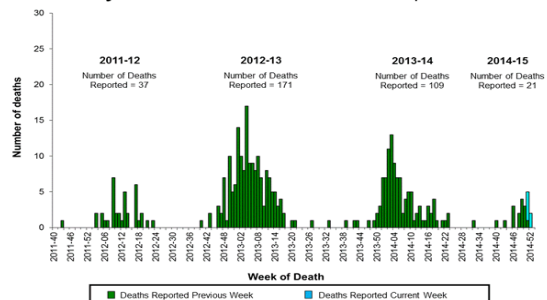
A Weekly Influenza Surveillance Report Prepared by the Influenza Division
Weekly Influenza Activity Estimates Reported by State and Territorial Epidemiologists*
Week Ending December 27, 2014- Week 52



*This map indicates geographic spread and does not measure the severity of influenza activity.

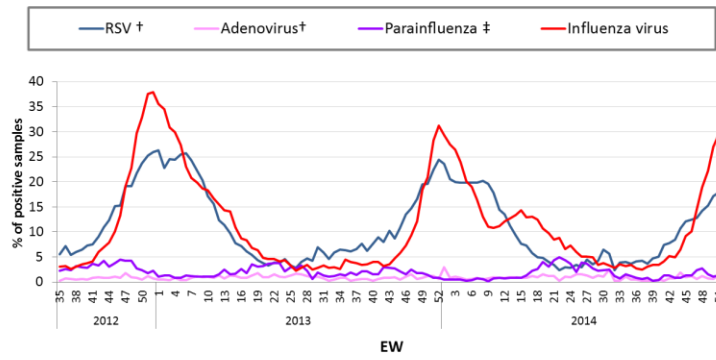
US: Número de fallecidos pediátricos asociados a influenza por semana: 2011 al presente

Number of Influenza-Associated Pediatric Deaths by Week of Death: 2011-12 season to present



US: Percent positivity for respiratory virus under surveillance, by EW, 2012-14
 Porcentaje de positividad para virus respiratorios en vigilancia, por SE, 2012-14

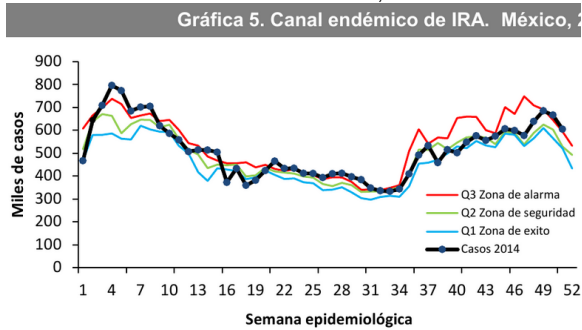
Percent Positivity for Respiratory Viruses Under Surveillance*—
 United States, 2012/2013 - 2014/2015



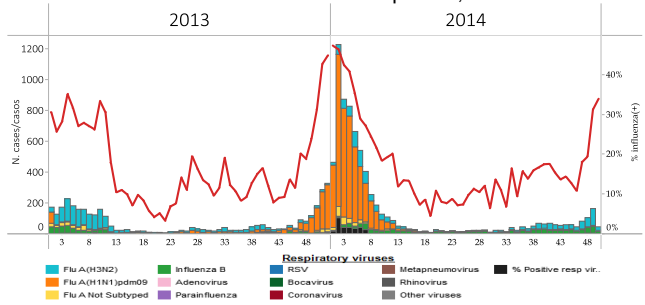
*For adenovirus, parainfluenza 1,2,3, and RSV, data are from NREVSS Laboratories (<http://www.cdc.gov/surveillance/nrevss/>); for influenza, data are from U.S. WHO/NREVSS Collaborating Laboratories (<http://www.cdc.gov/flu/weekly/>)
 † Antigen detection is reported
 ‡ Percent positive of Parainfluenza aggregates the % of positive samples from parainfluenza type 1, type 2 and type 3. Assuming that each samples were tested for the 3 sub-types.

- SARI/ILI consultations are below 1% / Las consultas de IRAG/ETI están por debajo del 1%
- ARI activity within the endemic channel / La actividad de IRA esta dentro del canal endémico
- The states with the highest pneumonia rate during week 52 were Colima, Jalisco, Nuevo Leon, Sonora and Zacatecas / Los estados con la mayor tasa de neumonía durante la semana 52 fueron Colima, Jalisco, Nuevo León, Sonora y Zacatecas
- Influenza A(H3N2) have predominated among influenza circulating viruses / Influenza A(H3N2) ha predominado entre los virus influenza circulantes

Mexico: ARI Endemic Channel, 2014
Canal Endémico de IRA, 2014



Mexico: Influenza virus distribution by EW 2013-14
Distribución de virus influenza por SE, 2013-14

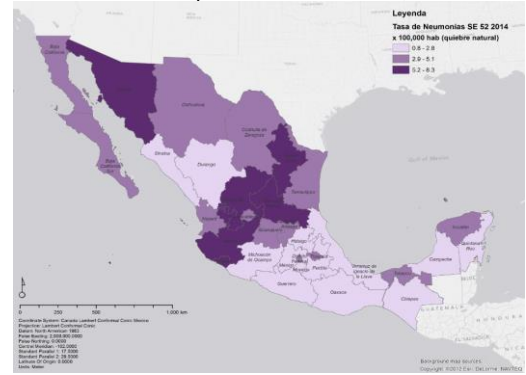


Mexico: Proportion of ILI / SARI visits, EW 51, 2014
Proporción de consultas por ETI / IRAG, SE 51, 2014

Figura 1. Proporción de consultas por ETI/IRAG en USMI según entidad federativa. México, 2014



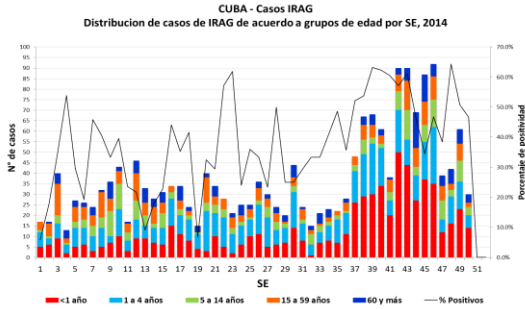
Mexico: Pneumonia rate by state, EW 52 2014
Tasa de neumonia por entidad federativa, SE 52 2014



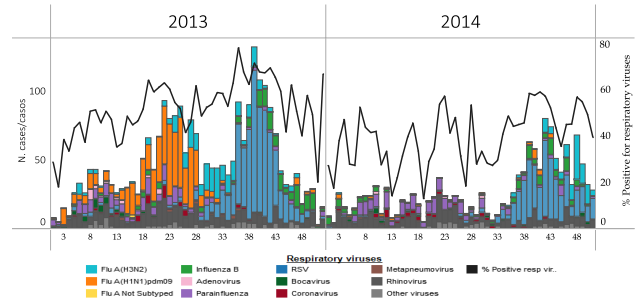
Cuba

- RSV has predominated among circulating virus / Entre los virus respiratorios, predomina la circulación de VSR
- Influenza A(H3N2), which had been the predominant influenza strain since EW 42, decreased during EW 51 / Influenza A(H3N2), la cepa de influenza predominante desde la SE 42, ha disminuido durante la SE 51

Cuba: SARI cases by age group, by EW, 2013-14
Casos IRAG por grupos de edad por SE, 2013-14



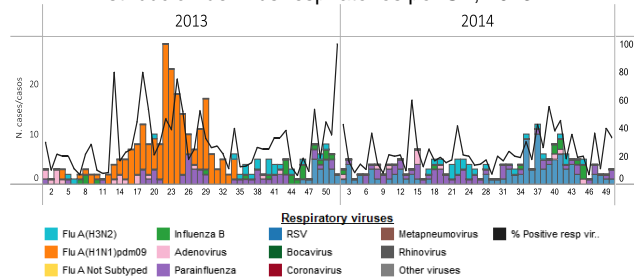
Cuba. Respiratory virus distribution by EW, 2013-14
Distribución de virus respiratorios por SE, 2013-14



Dominican Republic / República Dominicana

- Low level of influenza viruses detected during this period of time / Bajo nivel de virus influenza detectados durante este período de tiempo
- RSV has predominated among circulating virus / Entre los virus respiratorios, predomina la circulación de VSR
- Parainfluenza detections has been increased since EW 45 / Las detecciones parainfluenza se han incrementado desde la SE 45

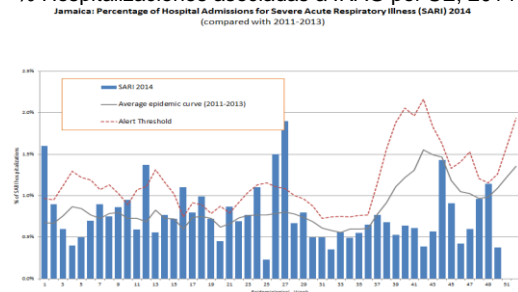
Dominican Republic: Respiratory virus distribution by EW, 2013-14
Distribución de virus respiratorios por SE, 2013-14



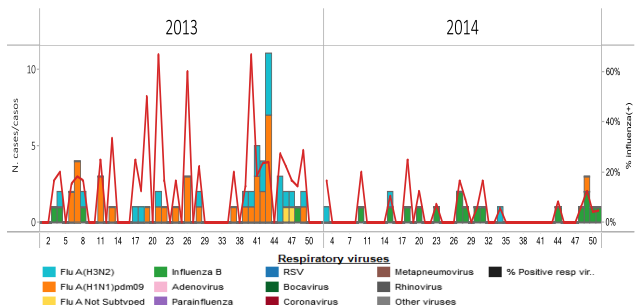
Jamaica

- SARI hospitalizations are below the expected levels during EW 50/ Las hospitalizaciones de IRAG están por debajo de los niveles esperados en la SE 50
- Very few influenza detections with influenza B predominating / Muy pocas detecciones de influenza con predominio de influenza B

Jamaica: % SARI-related hospitalizations, by EW, 2014
% Hospitalizaciones asociadas a IRAG por SE, 2014



Jamaica: Influenza virus distribution, by EW, 2013-14
Distribución de virus influenza. por SE, 2013-14

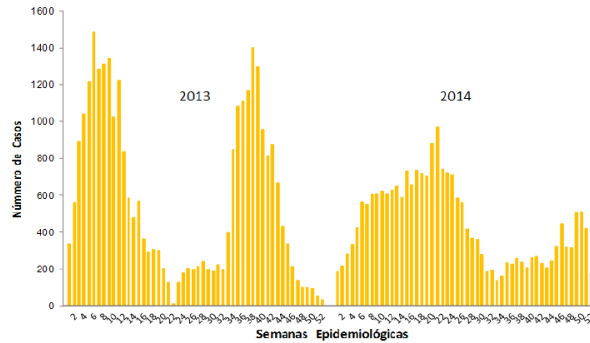


Puerto Rico

- High ILI activity / Actividad de ETI elevada¹
- Influenza detections have been low and stable / Detecciones de influenza bajas y estables

Puerto Rico: Influenza-positive cases by EW, 2013-14
Casos positivos a influenza por SE, 2013-14

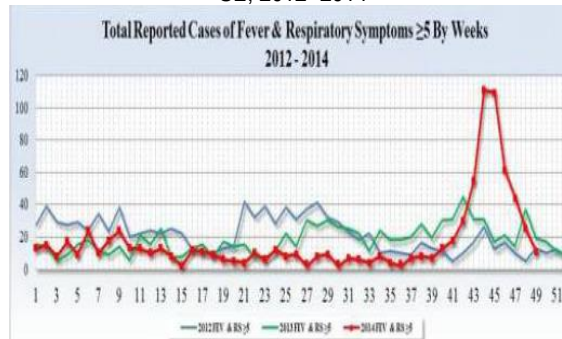
GRÁFICA 1. Número de Casos Positivos a Influenza por Prueba Rápida, Semana 52, Puerto Rico, 2014



Saint Lucia

- Cases of fever and acute respiratory symptoms within expected levels / Casos de fiebre y síntomas respiratorios en niveles esperados

Total de casos reportados de fiebre y síntomas respiratorios agudos, por SE, 2012- 2014

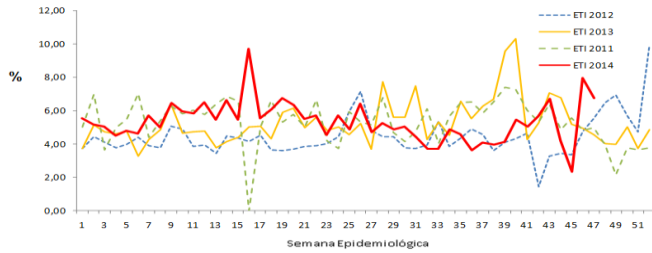


¹ As reported to CDC/De acuerdo al CDC: <http://www.cdc.gov/flu/weekly/>

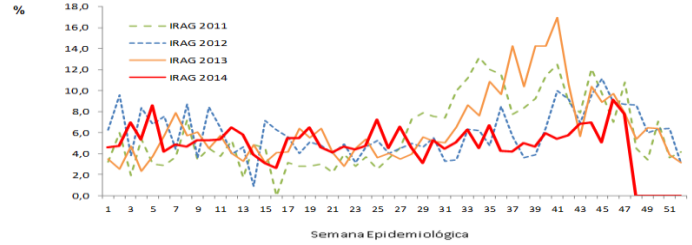
Honduras

- SARI activity within expected levels, elevated ILI activity / Actividad de IRAG dentro de niveles esperados, actividad de ETI elevada
- Very few respiratory virus detections with influenza A(H3N2) predominating / Muy pocas detecciones de virus respiratorios con predominio de influenza A(H3N2)

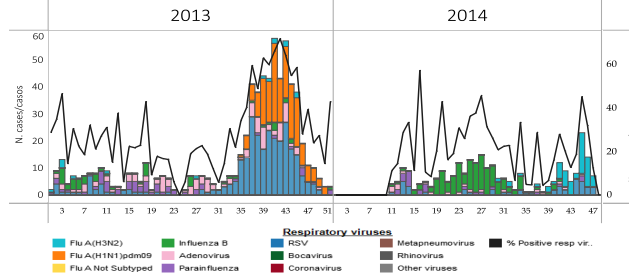
Honduras: Percent of Visits that are ILI by EW, 2011-14
 Porcentaje de consultas por ETI, por SE, 2011-14
 Distribución de las atenciones por ETI, Vigilancia centinela de influenza,
 Semana epidemiológica No. 47, Honduras, 2014



Honduras: % SARI-associated hospitalizations, by EW, 2011-14
 % hospitalizaciones asociadas a IRAG, por SE, 2011-14
 Distribución por IRAG, vigilancia centinela de influenza,
 Semana epidemiológica No 47, Honduras, 2014



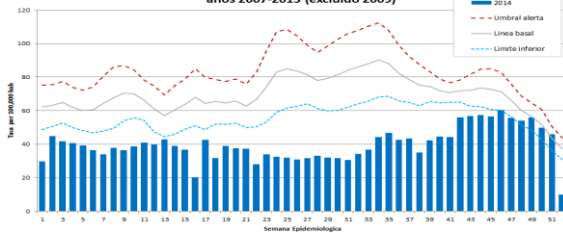
Honduras: Respiratory virus distribution by EW, 2013-14
 Distribución de virus respiratorios por SE, 2013-14



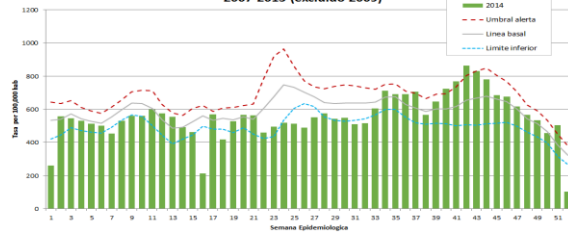
Nicaragua

- ARI activity rose above the alert threshold in EW 51 / Actividad de IRA subió por encima del umbral de alerta en la SE 51
- RSV active and maintained circulation / Circulación activa y mantenida de VSR

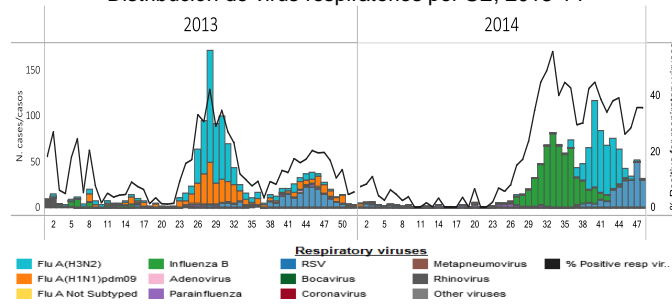
Nicaragua: Pneumonia rate by EW, 2014
 Nicaragua: Tasa de neumonías 2014 (x 100,000 hab) por SE comparado con
 años 2007-2013 (excluido 2009)



Nicaragua: ARI rate by EW, 2014
 Nicaragua: Tasa de IRAs 2014 (x 100,000 hab) por SE comparado con años
 2007-2013 (excluido 2009)



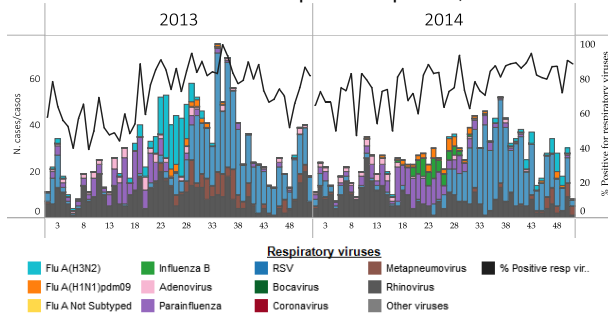
Nicaragua: Respiratory virus distribution by EW, 2013-14
Distribución de virus respiratorios por SE, 2013-14



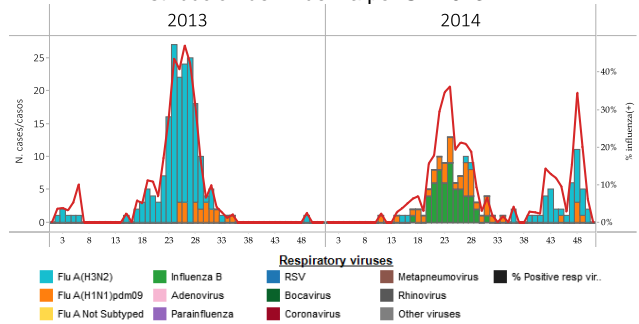
Panama

- RSV continued among circulating virus / Entre los virus respiratorios, continúa la circulación de VSR
- Influenza A(H3N2) detections has been increased since EW 42 / Las detecciones de influenza A(H3N2) se han incrementado desde la SE 42

Panama: Respiratory virus distribution by EW, 2013-14
Distribución de virus respiratorios por SE, 2013-14

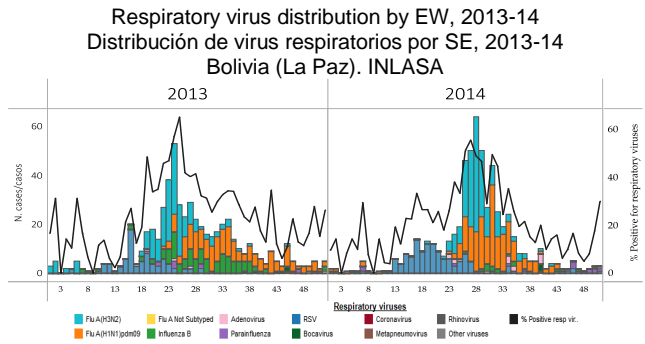
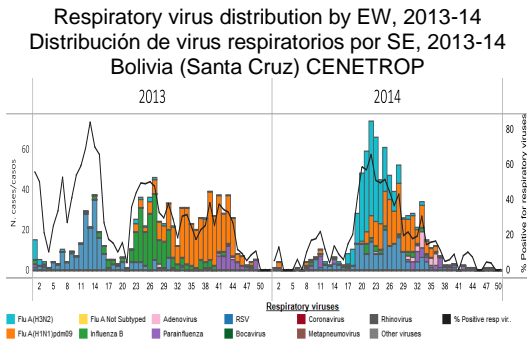


Panama. Influenza virus distribution by EW, 2013-14
Distribución de influenza por SE 2013-14



Bolivia

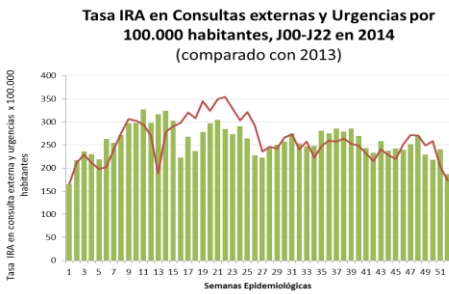
- Low respiratory virus activity with very few respiratory virus detections since EW 40 / Actividad baja de virus respiratorios, con muy pocas detecciones de virus respiratorios desde la SE 40



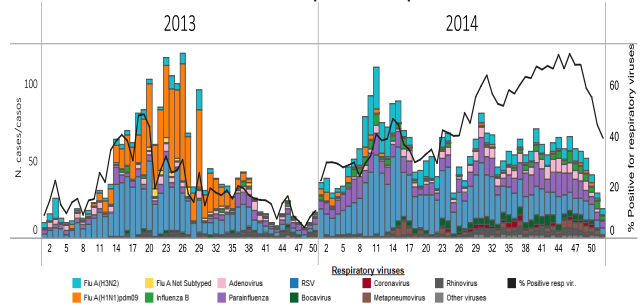
Colombia

- ARI activity within expected levels / Actividad de IRA dentro de niveles esperados
- RSV and parainfluenza have predominated among circulating virus/ Entre los virus respiratorios, ha predominado la circulación de VSR y parainfluenza
- Co-circulation of influenza A(H3N2) and influenza B / Co-circulación de influenza A(H3N2) e influenza B

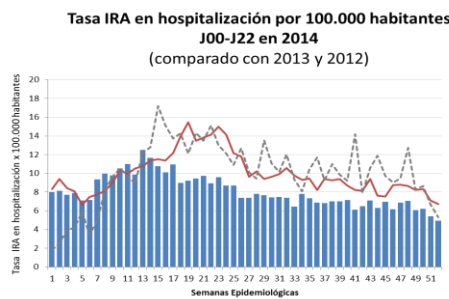
Colombia: Rate of ARI outpatient visits with J00-J20 codes, by EW, 2014



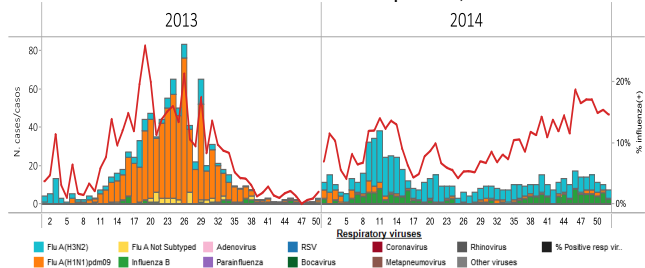
Colombia: Respiratory virus distribution by EW, 2013-14
Distribución de virus respiratorios por SE, 2013-14



Colombia: Rate of hospitalizations with J00 to J20 codes, by EW 2014



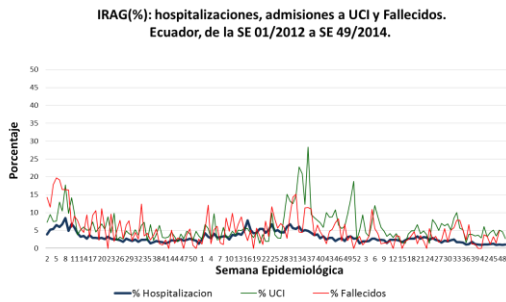
Colombia. Influenza virus distribution by EW, 2013-14
Distribución de virus influenza por SE, 2013-14



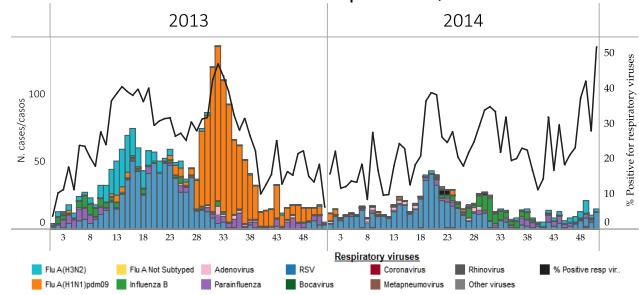
Ecuador

- SARI activity within expected levels / Actividad de IRAG dentro de niveles esperados
- Few respiratory virus detections in the last weeks with RSV predominating / Pocas detecciones de virus respiratorios en las últimas semanas, con predominancia de RSV

Ecuador: % SARI Hospitalizations, ICU Admissions & Deaths by EW 2013-14



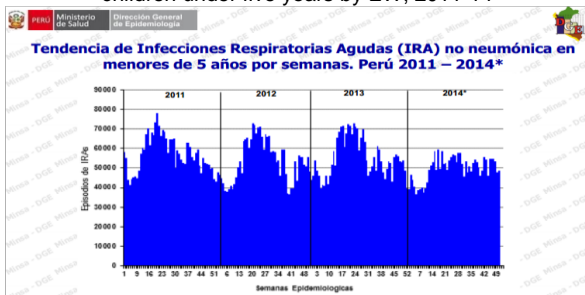
Ecuador: Respiratory virus distribution by EW, 2013-14
Distribución de virus respiratorios, 2013-14



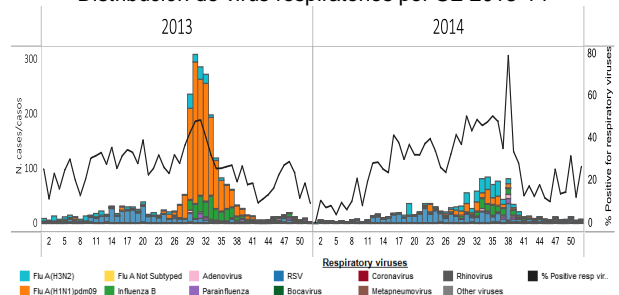
Peru

- ARI activity in children under five years within expected levels / Actividad de IRA en menores de cinco años dentro de niveles esperados
- Very few respiratory virus detections in the last weeks with predominance of parainfluenza / Muy pocas detecciones de virus respiratorios en las últimas semanas, con predominio de parainfluenza.

Peru: Trend of non-pneumonic acute respiratory infections in children under five years by EW, 2011-14



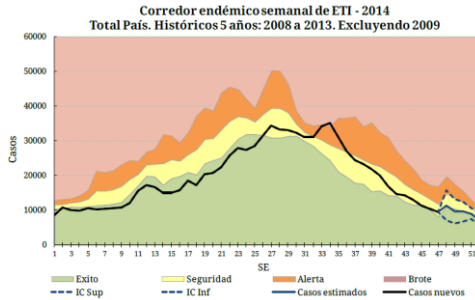
Peru. Respiratory virus distribution by EW, 2013-14
Distribución de virus respiratorios por SE 2013-14



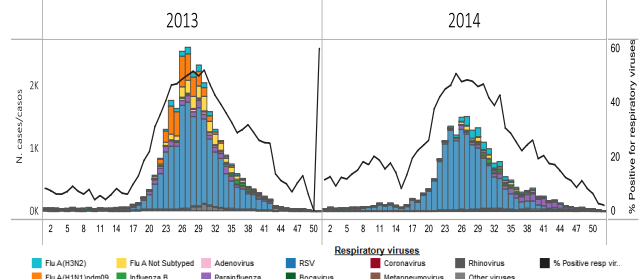
Argentina

- Low ILI / SARI activity and within expected levels and with an downward trend / Actividad baja de ETI/IRAG, dentro de niveles esperados y con tendencia decreciente
- Downward trend of respiratory virus activity / Tendencia decreciente de actividad viral respiratoria

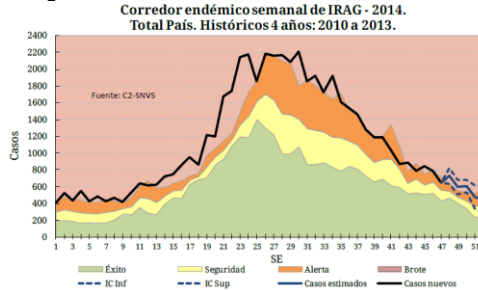
Argentina. ILI cases. Endemic channel, 2014



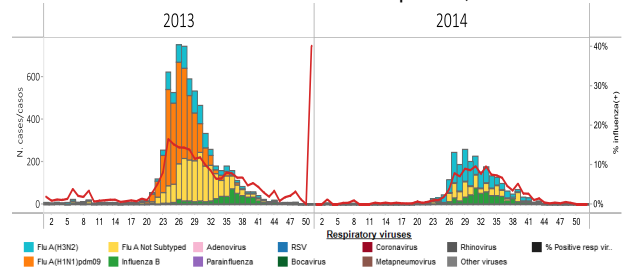
Argentina. Respiratory virus distribution by EW, 2013-14



Argentina. SARI cases. Endemic channel, 2014



Argentina. Influenza virus distribution by EW, 2014



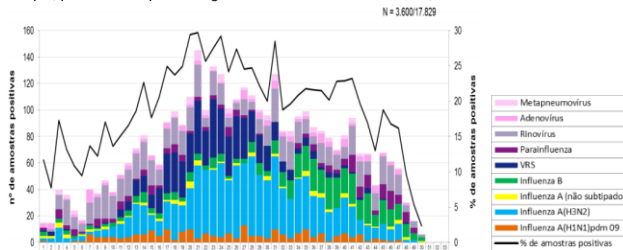
Brazil

- Low ILI / SARI activity and within expected levels and with an downward trend / Actividad baja de ETI/IRAG, dentro de niveles esperados y con tendencia decreciente
- Downward trend of respiratory virus activity / Tendencia decreciente de actividad viral respiratoria

Brazil: Respiratory virus distribution in ILI cases, by EW, 2014

Distribución de virus respiratorios en casos ETI, por SE, 2014

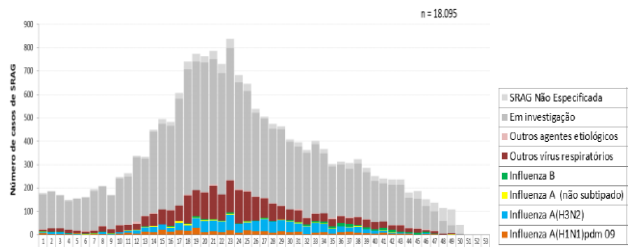
Figura 1. Distribuição dos vírus respiratórios identificados nas unidades sentinelas de Síndrome Gripal, por semana epidemiológica de início dos sintomas. Brasil, 2014 até a SE 50.



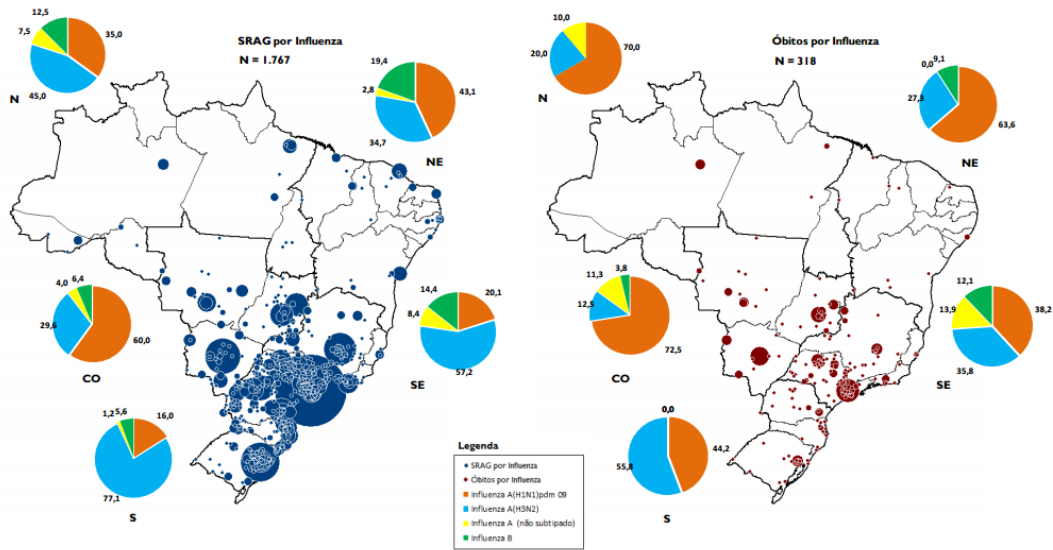
Brazil: Respiratory virus distribution, SARI cases, by EW, 2014

Distribución de virus respiratorios, casos IRAG, por SE, 2014

Figura 3. Distribuição dos casos de Síndrome Respiratória Aguda Grave segundo agente etiológico e semana epidemiológica do início dos sintomas. Brasil, 2014 até a SE 50.



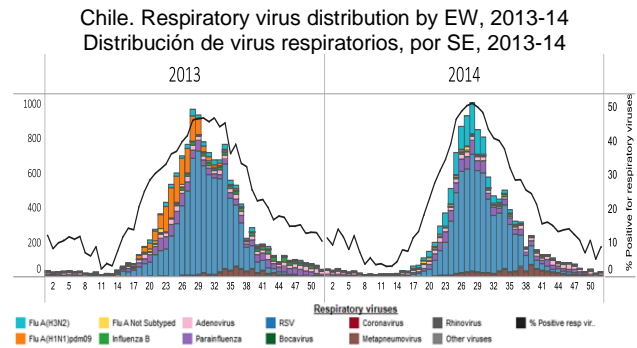
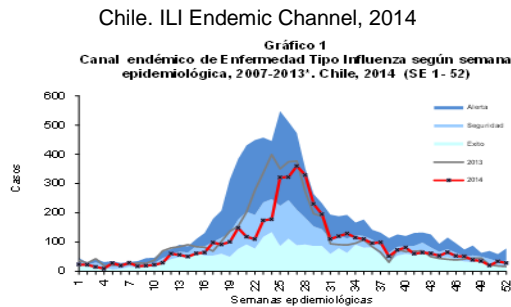
Brazil: Distribution of SARI hospitalizations and deaths by municipality and influenza type/subtype by region
 Distribución de hospitalizaciones y fallecidos por IRAG por municipio y tipo/subtipo de influenza por región
Anexo 4. Distribuição espacial dos casos e óbitos por Síndrome Respiratória Aguda Grave confirmados para influenza por município de residência e percentual dos vírus influenza identificados por região. Brasil, 2014 até a SE 50.



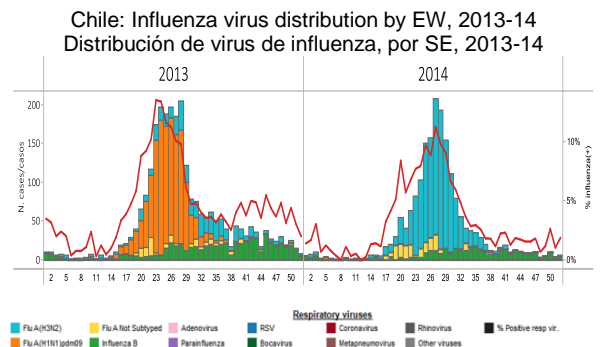
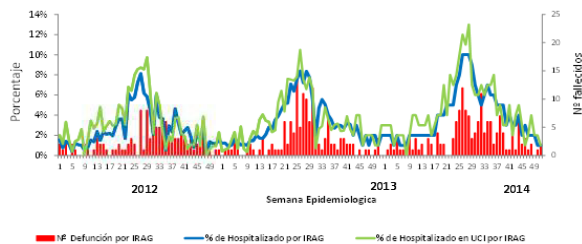
Fonte: SINAN Influenza Web. Dados atualizados em 16/12/2014, sujeitos a alteração.
 * O círculo é proporcional ao número de casos e óbitos. N = Norte; NE = Nordeste; SE = Sudeste; S = Sul; e CO = Centro Oeste.

Chile

- Low ILI / SARI activity and within expected levels / Actividad baja de ETI/IRAG y dentro de niveles esperados
- Downward trend of respiratory virus activity / Tendencia decreciente de actividad viral respiratoria



Chile. % SARI hospitalizations, ICU Adm and Deaths, 2012-14
 Porcentaje de hospitalizados, ingreso a UCI y número de fallecidos por IRAG según SE en Hospitales Centinela. Chile, 2012 - 2014 (*).

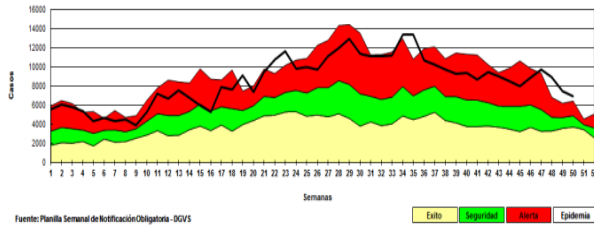


Paraguay

- Low ILI activity but slightly above expected levels / Actividad baja de ETI, pero ligeramente superior a los niveles esperados
- Downward trend of respiratory virus detections / Tendencia decreciente en las detecciones de virus respiratorios

Paraguay. ILI endemic channel, by EW, 2014

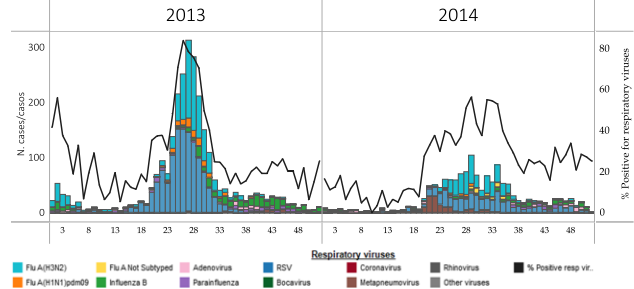
Canal endémico de ETI por SE, 2014
Canal endémico de ETI en población total según semana epidemiológica
Paraguay, 2014 (Semana Epidemiológica N° 50)



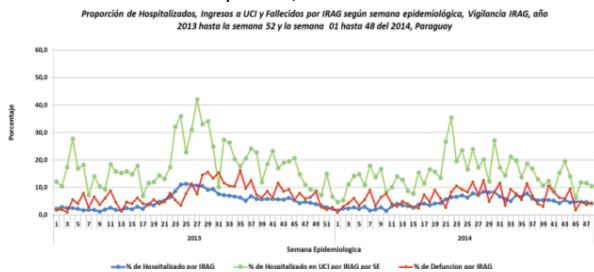
Fuente: Planilla Semanal de Notificación Obligatoria - DGVS

Paraguay. Respiratory virus distribution by EW, 2013-14

Distribución de virus respiratorios por SE, 2013-14

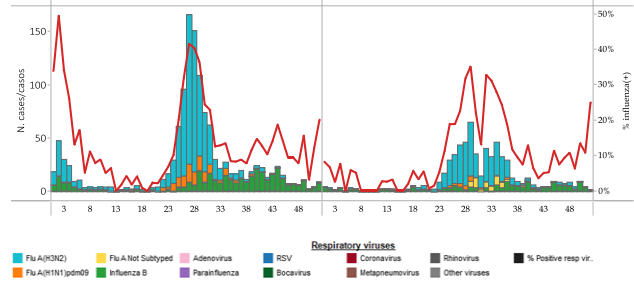


Paraguay: % SARI Hospitalizations, ICU Admissions & Deaths by EW 2013-14
Cayos IRAG. Hospitalizaciones e ingresos em UCI & fallecidos (%) por SE, 2013-14



Paraguay: Influenza virus distribution by EW, 2013-14

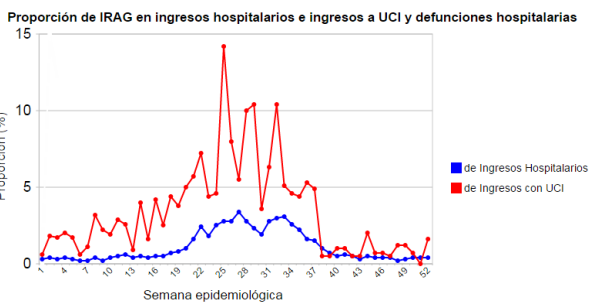
Distribución de virus de influenza, por SE, 2013-14



Uruguay

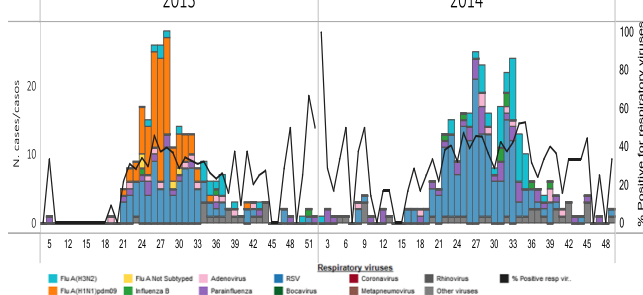
- SARI hospitalizations increased this week but are within expected levels / Las hospitalizaciones de IRAG se incrementaron esta semana pero están dentro de niveles esperados
- Downward trend of respiratory virus detections / Tendencia decreciente en las detecciones de virus respiratorios
- No influenza virus detected since EW 39 / No se han detectado virus influenza desde la SE 39

Uruguay: % SARI-associated hospitalizations & ICU admissions by EW, 2014



Uruguay: Respiratory virus distribution by EW, 2013-14

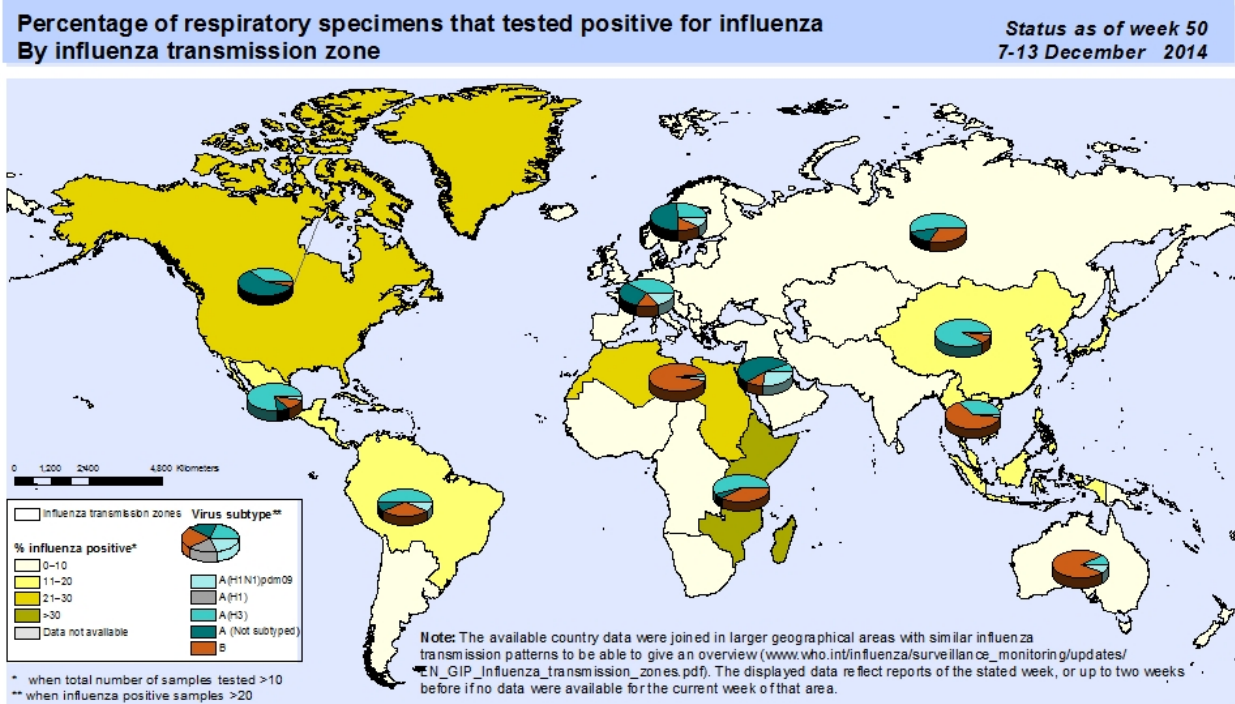
Distribución de virus respiratorios por SE 2013-14



Influenza global update / Actualización de influenza a nivel global

- Globally, as of EW 50 influenza activity remained low, but with increases in North America / A nivel global, a la SE 50 la actividad de influenza continua baja, pero con aumentos en Norteamérica.
- The WHO GISRS laboratories tested more than 70,341 specimens. 12,567 were positive for influenza viruses, of which 11,826 (94.1%) were typed as influenza A and 741 (5.9%) as influenza B. Of the sub-typed influenza A viruses, 109 (1.8%) were influenza A(H1N1)pdm09 and 6025 (98.2%) were influenza A(H3N2). Of the characterized B viruses, 134 (99.3%) belonged to the B-Yamagata lineage and 1 (0.7%) to the B-Victoria lineage. / Los laboratorios del sistema de vigilancia global de influenza y respuesta (GISRS) de la OMS realizaron pruebas a más de 70.341 muestras: 12.567 fueron positivas a influenza, de las cuales 11.826 (94,1%) se tipificaron como influenza A y 741 (5,9%) como influenza B. De los virus sub-tipificados de influenza A y 109 (1,8%) fueron influenza A(H1N1)pdm09, 6.025 (98,2%) influenza A(H3N2). De los virus influenza B caracterizados, 134 (99,3%) pertenecían al linaje B-Yamagata y 1 (0,7%) al linaje B-Victoria.

Nivel global: Porcentaje de muestras respiratorias positivas a influenza por zona de transmisión de influenza, SE 50, 2014



The boundaries and names shown and the designations used on this map do not imply the expression of any opinion whatsoever on the part of the World Health Organization concerning the legal status of any country, territory, city or area or of its authorities, or concerning the delimitation of its frontiers or boundaries. Dotted and dashed lines on maps represent approximate border lines for which there may not yet be full agreement.

Data Source: WHO/GIP, data in HQ as of 22 August 2014.
Data used are from FluNet (www.who.int/flu-net), 08:15 UTC snapshot, from WHO regional offices and/or ministry of health websites.

 **World Health Organization**
© WHO 2014. All rights reserved.

ACRONYMS

ARI	Acute respiratory infection
CARPHA	Caribbean Public Health Agency
CENETROP	Centro de Enfermedades Tropicales (Santa Cruz, Bolivia)
EW	Epidemiological Week
ILI	Influenza-like illness
INLASA	Instituto Nacional de Laboratorios de Salud (La Paz, Bolivia)
INS	Instituto Nacional de Salud
ORV	Other respiratory viruses
SARI	Severe acute respiratory infection
SEDES	Servicio Departamental de Salud (Bolivia)
ICU	Intensive Care Unit
RSV	Respiratory Syncytial Virus

ACRÓNIMOS

CARPHA	Caribbean Public Health Agency
CENETROP	Centro de Enfermedades Tropicales (Santa Cruz, Bolivia)
ETI	Enfermedad tipo influenza
INLASA	Instituto Nacional de Laboratorios de Salud (La Paz, Bolivia)
INS	Instituto Nacional de Salud
IRA	Infección respiratoria aguda
IRAG	Infección respiratoria aguda grave
OVR	Otros virus respiratorios
SE	Semana epidemiológica
SEDES	Servicio Departamental de Salud (Bolivia)
UCI	Unidad de Cuidados Intensivos
VSR	Virus sincitial respiratorio