

Regional Update EW 44, 2014

Influenza and other respiratory virus
(November 12, 2014)

Actualización Regional SE 44, 2014

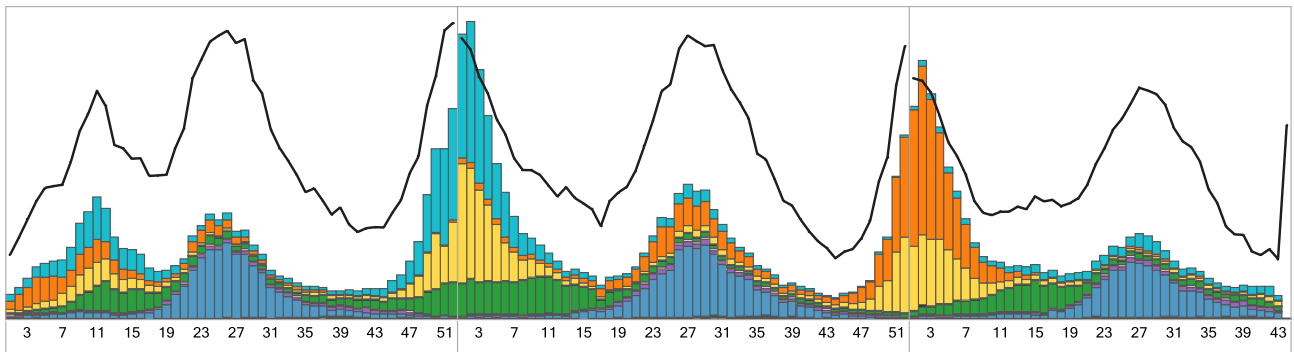
Influenza y otros virus respiratorios
(12 de noviembre, 2014)

PAHO interactive influenza data
Datos interactivos de influenza de la OPS:

http://ais.paho.org/phis/viz/ed_flu.asp

Influenza Regional Reports:
Informes regionales de influenza:

www.paho.org/influenzareports
www.paho.org/reportesinfluenza



The information presented in this update is based on data provided by Ministries of Health and National Influenza Centers of Member States to the Pan American Health Organization (PAHO) or from updates on the Member States' Ministry of Health web pages.

La información presentada en esta actualización se obtiene a partir de los datos distribuidos por los Ministerios de Salud de los Estados Miembros y de los Centros Nacionales de Influenza de los Estados Miembros de la Organización Panamericana de la Salud (OPS) o de actualizaciones de los Ministerios de Salud de los Estados Miembros en sus páginas web.

WEEKLY SUMMARY (ENGLISH)

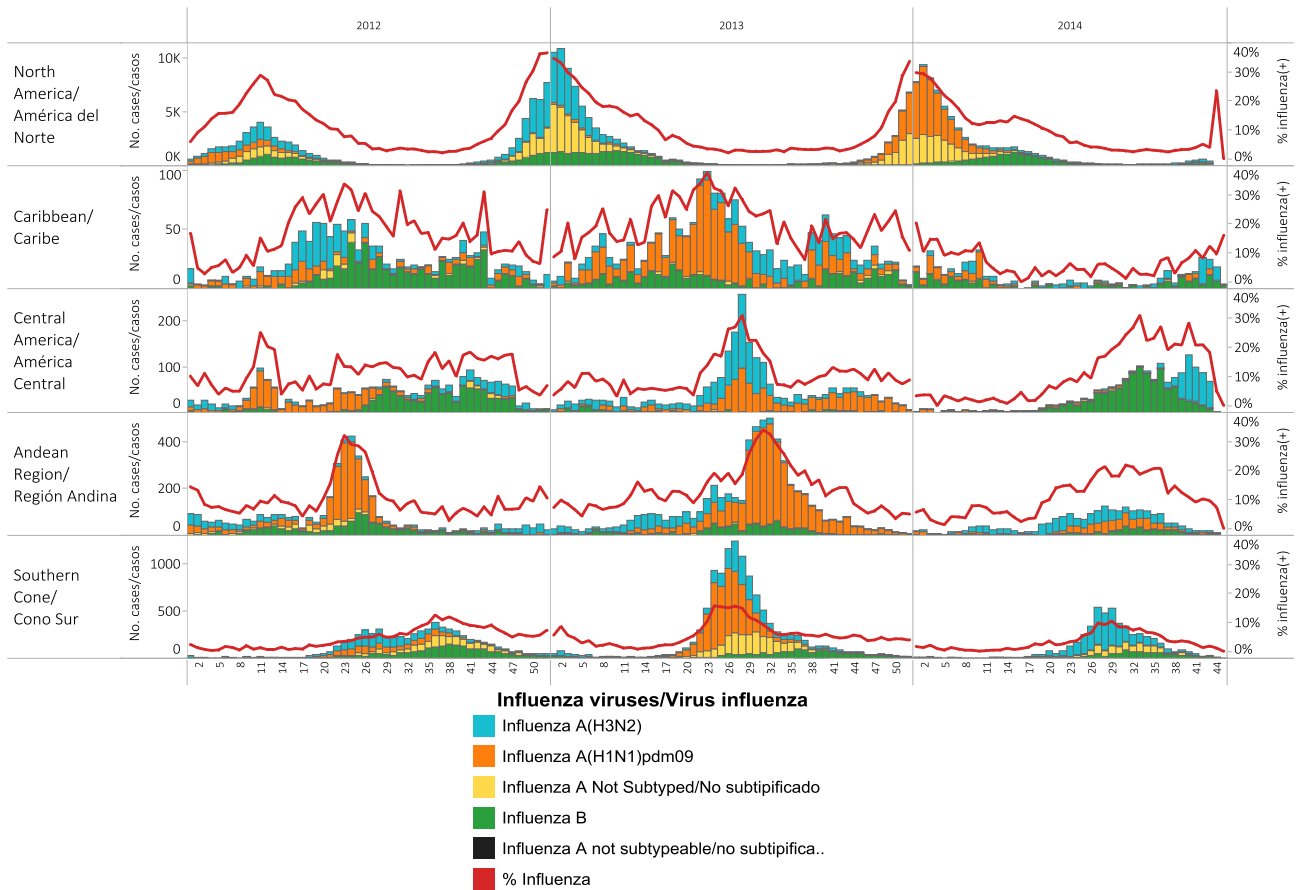
- **North America:** Influenza activity continued low. In Canada, ILI activity decreased in epidemiologic week (EW) 44 however continued above expected levels since the last ten weeks. Influenza detections have continued to increase since EW 37 and influenza A(H3N2) has predominated among circulating influenza virus. Detections of adenovirus, parainfluenza and RSV continued to increase since EW 40 and rhinovirus detections decrease these week. In the United States, ILI activity continued below the national baseline for the last five weeks. Influenza A (not subtyped), influenza A(H3) and influenza B have predominated among the circulating influenza virus. From mid-August to November 6, 2014, 1,116 cases of Enterovirus D68 have been confirmed in 47 states and the District of Columbia; 37 states and the District of Columbia reported low or declining Enterovirus D68 activity and ten reported elevated or increasing activity. In Mexico, ARI activity continued within the endemic channel. Since previous three EW, no increase in the proportions of SARI/ILI consultations has been recorded and remained below 2%. Since the last six weeks, there have been very few influenza detections in the country.
- **Caribbean:** Respiratory virus activity remained low. In Cuba, SARI activity decrease this week after two weeks of increased activity. In Jamaica, the proportion of SARI hospitalizations increase this week and are within expected levels. In Puerto Rico, ILI activity (as reported to CDC) was reported high after being minimal and moderate in the last weeks, however influenza detections continued low and decreasing during the last four weeks. Among respiratory virus, circulation of RSV (Cuba) and influenza B (Dominican Republic, Jamaica) were observed.
- **Central America:** Respiratory virus activity remained low. SARI/ARI activity remained within expected levels (El Salvador, Nicaragua). RSV predominated among circulating virus (El Salvador, Panama).
- **Andean Sub-region:** Respiratory virus activity and SARI/ARI activity remained low and within expected levels (Bolivia, Colombia, Peru, Venezuela). In Bolivia and Peru, there have been very few respiratory virus detections in the last four weeks. RSV predominated among circulating virus (Colombia, Peru).
- **Southern Cone:** Respiratory virus activity and SARI/ARI activity have continued to decrease. There have been very few influenza and other respiratory virus detections in the last weeks (Argentina, Brazil, Chile, Uruguay).

RESUMEN SEMANAL (ESPAÑOL)

- **América del Norte:** La actividad de influenza continúa baja. En Canadá, la actividad de ETI disminuyó en la semana epidemiológica (SE) 44, sin embargo la actividad permanece por encima de la línea basal desde las últimas diez semanas. Las detecciones de influenza continúan aumentando desde la SE 37 e influenza A(H3N2) ha predominado entre los virus influenza circulantes. Las detecciones de adenovirus, parainfluenza y VSR continúan aumentando desde la SE 40 y en esta semana las detecciones de rinovirus disminuyeron. En los Estados Unidos, la actividad de ETI continúa por debajo de la línea basal nacional desde las últimas cinco semanas. Influenza A (no subtipificada), influenza A(H3) e influenza B han predominado entre los virus circulantes de influenza. Desde mediados de agosto y al 6 de noviembre 2014, se han confirmado 1.116 casos de Enterovirus D68 en 47 estados y el Distrito de Columbia; 37 estados y el Distrito de Columbia han reportado actividad de Enterovirus D68 baja o en descenso y diez actividad elevada o en aumento. En México, la actividad de IRA continúa dentro del canal endémico. No se ha registrado incremento en las proporciones de consultas por IRAG/ETI en las tres últimas SE y se mantienen por debajo del 2%. Durante las últimas seis semanas, ha habido muy pocas detecciones de influenza en el país.
- **Caribe:** La actividad de virus respiratorios continúa baja. En Cuba, la actividad de IRAG disminuyó esta semana, después de dos semanas de incremento. En Jamaica, la proporción de hospitalizaciones de IRAG aumentó esta semana, sin embargo se encuentra en los niveles esperados. En Puerto Rico, la actividad de ETI (de acuerdo al CDC) se reporta como elevada, después de haber estado mínima y moderada en las semanas anteriores, si embargo las detecciones de influenza continúan bajas y con tendencia decreciente desde las últimas cuatro semanas. Entre los virus respiratorios, se observa la circulación de VSR (Cuba) e influenza B (República Dominicana, Jamaica).
- **América Central:** La actividad de virus respiratorios continúa baja. La actividad de IRAG/IRA continúa dentro de los niveles esperados (El Salvador, Nicaragua). Entre los virus respiratorios, predomina la circulación de VSR (El Salvador, Panamá).
- **Sub-región Andina:** La actividad de virus respiratorios y de IRAG/IRA continúa baja y dentro de los niveles esperados (Bolivia, Colombia, Perú, Venezuela). En Bolivia y Perú, han habido muy pocas detecciones de virus respiratorios en las últimas cuatro semanas. Entre los virus respiratorios, predomina la circulación de VSR (Colombia, Perú).
- **Cono Sur:** La actividad de virus respiratorios y de IRAG/IRA continúa descendiendo. En las últimas semanas, han habido muy pocas detecciones de influenza y otros virus respiratorios (Argentina, Brasil, Chile, Uruguay).

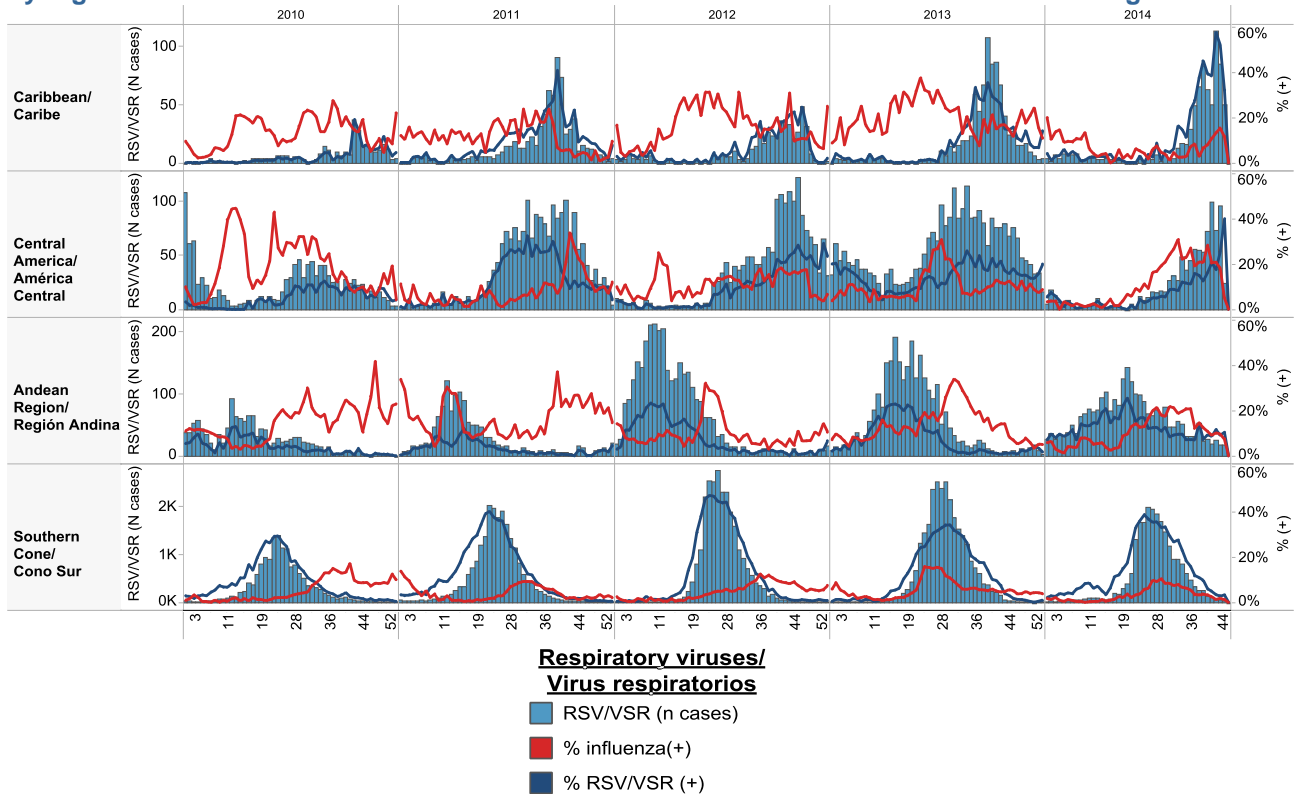
Influenza circulation by region. 2013-14

Circulación virus influenza por región. 2013-14



Respiratory syncytial virus (RSV) circulation by region. 2013-14

Circulación de virus sincitial respiratorio por región. 2013-14



Weekly and cumulative numbers of influenza and other respiratory virus, by country and EW, 2014
 Número semanal y acumulado de influenza y otros virus respiratorios, por país y SE, 2014

EW 41-44, 2014 / SE 41-44, 2014

		N samples/muestras	% Positive/Positividad	Influenza A (H3N2)	Influenza A (H1N1)pdm09	Influenza A Not Subtyped/No subtipificado	Influenza B	Adenovirus	Parainfluenza	RSV/VSR	Bocavirus	Coronavirus	Metapneumovirus	Rhinovirus
North America/ América del Norte	Canada	8,598	1.8	91	1	39	25							
	Mexico	1,220	17.5	104	1	8	85	6	4	1				
	United States of America	27,092	4.6	387	16	466	387							
Caribbean/ Caribe	CARPHA	36	0.0				0							
	Cuba	472	52.5	23	7	0	28	0	9	152	0	2	0	18
	Dominican Republic	95	27.4	3			3	1	4	15				
	Jamaica	41	2.4	0	0	0	1	0	0	0				
Central America/ América Central	Costa Rica	347	56.8	31	1	0	22	5	3	135				
	El Salvador	201	24.4	1	0	1	0	8	1	38				
	Guatemala	102	34.3	0	0	5	8	0	0	21	0	0	1	0
	Honduras	9	0.0	0	0	0	0	0	0	0				
	Nicaragua	555	36.9	161			15			29				
	Panama	117	91.5	12			0	2	1	69			3	20
Andean Region/ Región Andina	Bolivia - INLASA La Paz	105	11.4	1	7		2		1	1				
	Colombia	338	66.0	22	1	2	17	29	39	61	21	4	10	12
	Ecuador	75	22.7	3	0	0	0	1	8	5				
	Peru	277	14.8	4	4	0	10	1	7	12	0	0	3	0
Brazil & Southern Cone/ Cono Sur	Argentina	2,952	18.0	15	0	18	16	34	286	86			75	
	Brazil	505	21.6	14	27	0	68							
	Chile	2,962	14.9	4	1		41	74	94	99			127	
	Paraguay	216	21.3	0	0	4	5	6	9	22	0	0	0	0
	Uruguay	25	24.0	0	0	0	0	1	1	0				
Grand Total		46,340	8.5	876	66	543	733	168	467	746	21	6	219	50

Cumulative, EW 1-44, 2014 / Acumulado, SE 1-44, 2014

		N samples/muestras	% Positive/Positividad	Influenza A (H3N2)	Influenza A (H1N1)pdm09	Influenza A Not Subtyped/No subtipificado	Influenza B	Adenovirus	Parainfluenza	RSV/VSR	Bocavirus	Coronavirus	Metapneumovirus	Rhinovirus
North America/ América del Norte	Canada	181,031	14	702	8,508	9,521	7,429							
	Mexico	24,494	28	990	4,332	267	824	22	8	38				
	United States of America	303,510	13	4,248	18,525	9,988	7,763							
Caribbean/ Caribe	CARPHA	1,046	15	17	40	7	23	7	11	49	1	1		3
	Cuba	2,687	41	30	38	0	94	10	197	330	24	53	8	248
	Dominican Republic	805	22	23			8	9	53	84				
	Haiti	145	11	10	0	0	6							
	Jamaica	418	4	3	1	0	11	0	0	0				
Central America/ América Central	Costa Rica	2,671	30	62	32	0	230	105	100	265				
	El Salvador	1,573	16	4	5	2	55	72	34	72				
	Guatemala	1,155	26	2	10	24	39	15	22	80	0	0	112	0
	Honduras	1,178	16	4	0	1	122	15	21	23				
	Nicaragua	4,007	25	343	9		562	1	31	55				
	Panama	1,541	77	19	37		55	47	197	447			12	366
Andean Region/ Región Andina	Bolivia - CENETROP Sta..	2,623	29	276	215	0	30	28	44	175				
	Bolivia - INLASA La Paz	1,864	30	194	199		17	15	10	126	3		1	
	Colombia	6,141	41	369	61	2	116	162	413	1,066	116	47	79	74
	Ecuador	3,145	20	16	21	0	71	37	55	425				
Peru		3,175	34	231	170	0	149	44	54	416	0	0	17	0
	Argentina	55,132	35	1,016	16	658	516	421	1,584	14,272			563	
	Brazil	9,462	17	969	330	0	355							
	Chile	36,196	31	1,362	16	179	262	794	1,162	6,826			712	
	Paraguay	4,158	30	213	16	224	101	41	49	447	0	0	157	0
Uruguay	819	36	44	0	0	8	10	37	168					
Grand Total		648,976	18	11,147	32,581	20,873	18,846	1,855	4,082	25,364	144	101	1,661	691

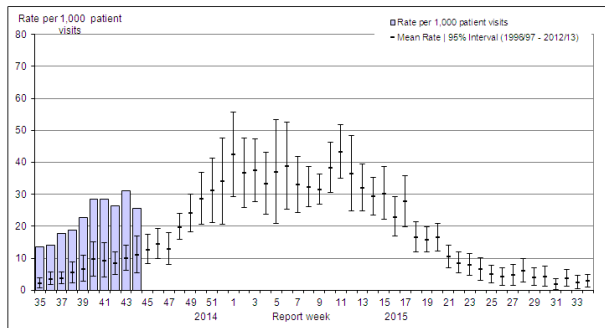
North America / América del Norte:

Canada

- ILI activity continued above expected levels / La actividad de ETI permanece por encima de los niveles esperados
- Influenza A(H3N2) has predominated among circulating influenza virus / Influenza A(H3N2) predomina entre los virus influenza circulantes
- Detections of rhinovirus increased this year compared to previous years / Las detecciones de rinovirus se incrementaron este año em comparación con año previos

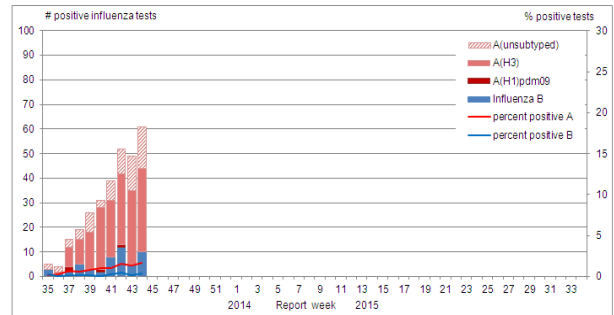
Canada: ILI Consultation Rates, by EW, 2014-15
Tasa de consultas de ETI, por SE, 2014-15

Figure 5. Influenza-like-illness (ILI) consultation rates by report week, compared to the 1996-97 through to 2012-13 seasons (with pandemic data suppressed), Canada, 2014-2015



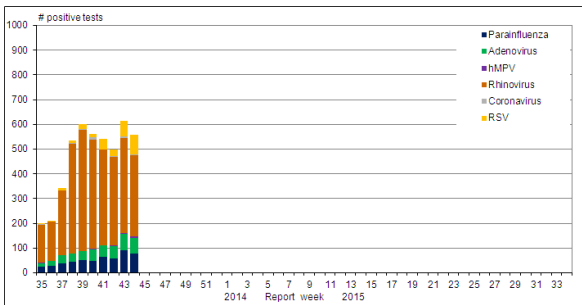
Canada: Influenza virus distribution by EW, 2014-15
Distribución de virus de influenza por SE, 2014 -15

Figure 2. Number of positive influenza tests and percentage of tests positive, by type, subtype and report week, Canada, 2014-15



Canada: Other respiratory virus distribution by EW, 2014-15
Distribución de virus respiratorios por SE, 2014 -15

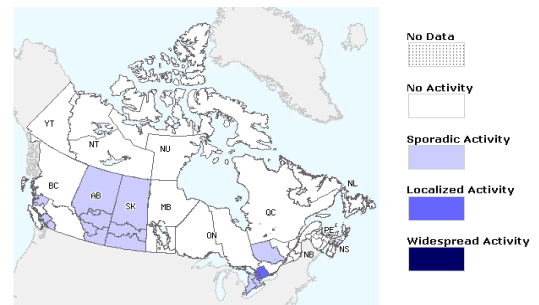
Figure 3. Number of positive laboratory tests for other respiratory viruses by report week, Canada, 2014-15



RSV: Respiratory syncytial virus; hMPV: Human metapneumovirus

Canada: Influenza/ILI Activity by region, EW 44, 2014
Actividad de Influenza/ETI por provincia & territorio, SE 44, 2014

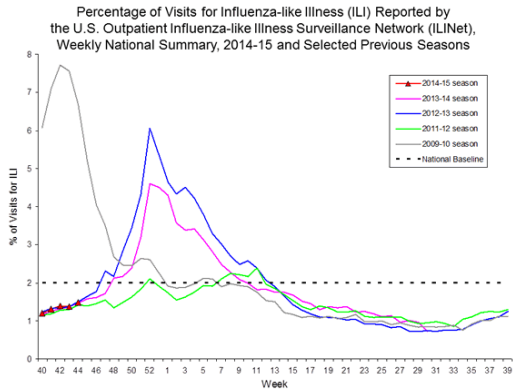
Figure 1. Map of overall influenza/ILI activity level by province and territory, Canada, Week 44



United States

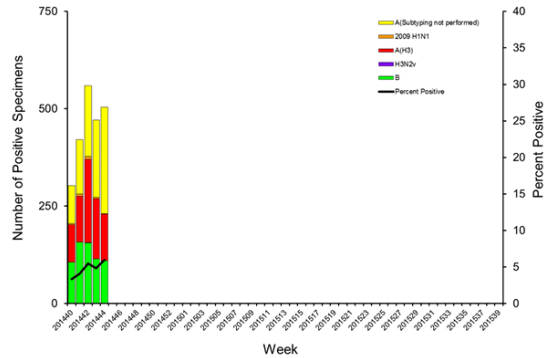
- ILI activity continued below the national baseline / La actividad de ETI continua por debajo de la línea de base nacional
- Influenza A (not subtyped) and influenza B have predominated among circulating influenza virus / Influenza A (no subtipificada) e influenza B han predominado entre los virus circulantes de influenza
- RSV detections has been increased since EW 39 / Las detecciones de VSR se han incrementado desde la SE 39
- Pneumonia and influenza mortality continued below the epidemic threshold of 6.2% / La mortalidad por pneumonia e influenza continúan por debajo del umbral epidémico del 6,2%

US: Percent of ILI visits by EW, 2014-15
Porcentaje de consultas ETI por SE, 2014-15



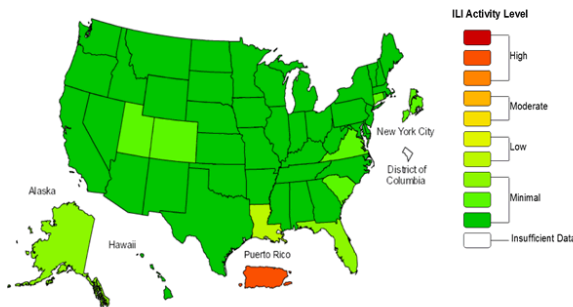
US: Influenza virus distribution by EW, 2014-15
Distribución de virus de influenza por SE, 2014-15

Influenza Positive Tests Reported to CDC by U.S. WHO/NREVSS Collaborating Laboratories, National Summary, 2014-15



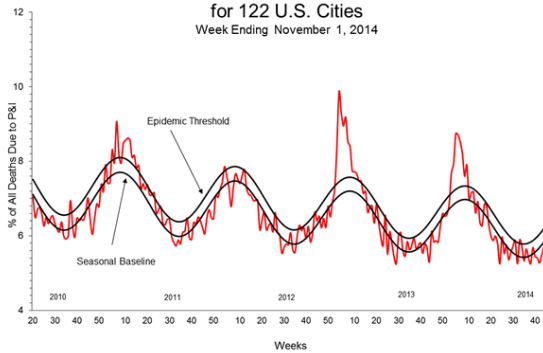
US: ILI activity by state, EW 44, 2014
Actividad ETI por estado, SE 44, 2014

Influenza-Like Illness (ILI) Activity Level Indicator Determined by Data Reported to ILINet
2014-15 Influenza Season Week 44 ending Nov 01, 2014



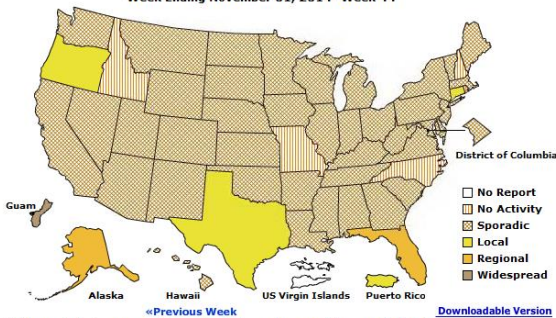
US: Pneumonia and influenza mortality
Mortalidad por neumonía e influenza

Pneumonia and Influenza Mortality for 122 U.S. Cities
Week Ending November 1, 2014



US: Weekly influenza activity reported by State and Territory
Actividad semanal de influenza reportado por estado y territorio

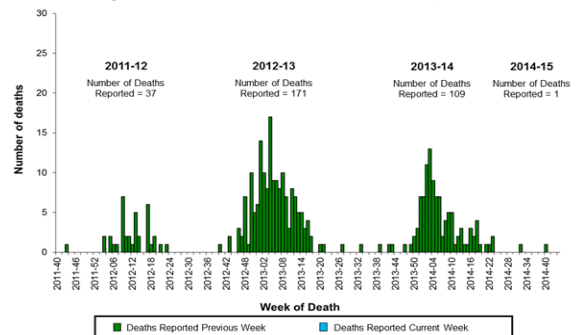
A Weekly Influenza Surveillance Report Prepared by the Influenza Division
Weekly Influenza Activity Estimates Reported by State and Territorial Epidemiologists*
Week Ending November 01, 2014- Week 44



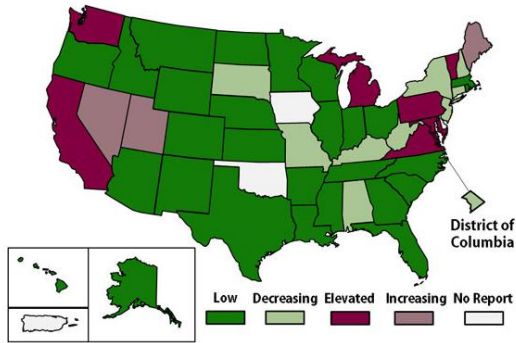
*This map indicates geographic spread and does not measure the severity of influenza activity.

US: Número de fallecidos pediátricos asociados a influenza por semana: 2011 al presente

Number of Influenza-Associated Pediatric Deaths by Week of Death: 2011-12 season to present



US: Activity of Enterovirus D68-like illness by state
 Actividad de enfermedad tipo Enterovirus D68 por estado



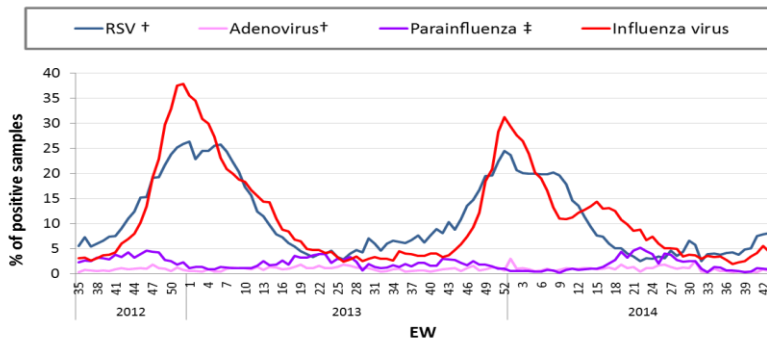
For the week of October 26 – November 1, 2014, 47 states and the District of Columbia have submitted assessments to CDC of activity of EV-D68-like illness.

Para la semana del 26 de octubre – 1 de noviembre 2014, 47 estados y el distrito de Columbia enviaron al CDC su evaluación de actividad de enfermedad tipo EV-D68.

- 37 states and the District of Columbia reported low or declining activity / 37 estados y el Distrito de Columbia reportaron actividad baja o en descenso
- 10 states reported elevated or increasing activity/ 10 estados reportaron actividad elevada o en ascenso

US: Percent positivity for respiratory virus under surveillance, by EW, 2012-14
 Porcentaje de positividad para virus respiratorios en vigilancia, por SE, 2012-14

**Percent Positivity for Respiratory Viruses Under Surveillance*—
 United States, 2012/2013 - 2014/2015**



*For adenovirus, parainfluenza 1,2,3, and RSV, data are from NREVSS Laboratories (<http://www.cdc.gov/surveillance/nrevss/>); for influenza, data are from U.S. WHO/NREVSS Collaborating Laboratories (<http://www.cdc.gov/flu/weekly/>)
 † Antigen detection is reported
 ‡ Percent positive of Parainfluenza aggregates the % of positive samples from parainfluenza type 1, type 2 and type 3. Assuming that each samples were tested for the 3 sub-types.

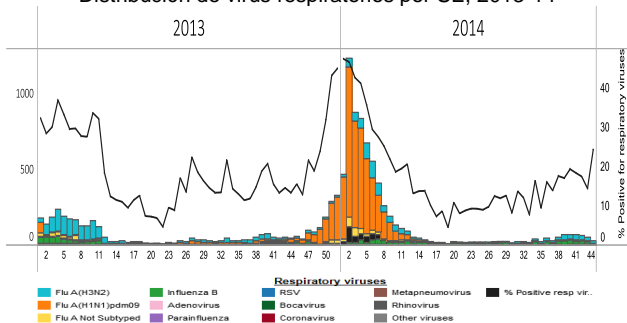
Mexico

- SARI/ILI consultations remained below 2% / Las consultas de IRAG/ETI se mantienen por debajo del 2%
- ARI activity within the endemic channel / La actividad de IRA esta dentro del canal endémico
- Very few influenza detections with predominated influenza A(H3N2) circulation in the last four EW / Muy pocas detecciones de influenza con predominio de circulación de influenza A(H3N2) en las últimas cuatro SE

Mexico: ARI Endemic Channel, 2014
Canal Endémico de IRA, 2014

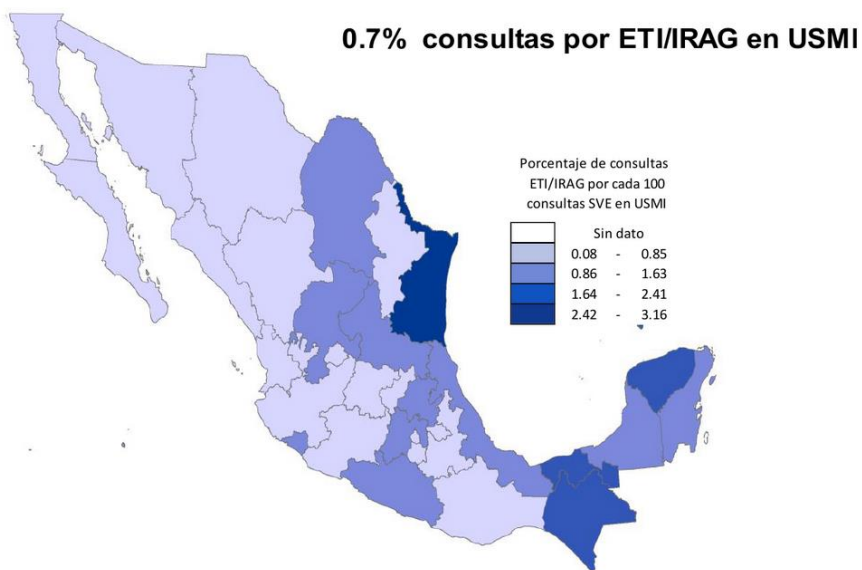


Mexico: Respiratory virus distribution by EW 2013-14
Distribución de virus respiratorios por SE, 2013-14



Mexico: Proportion of ILI / SARI visits, EW 45, 2014
Proporción de consultas por ETI / IRAG, SE45, 2014

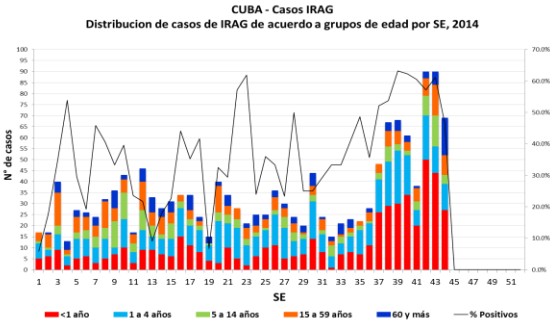
Figura 1. Proporción de consultas por ETI/IRAG en USMI según entidad federativa.
México, 2014



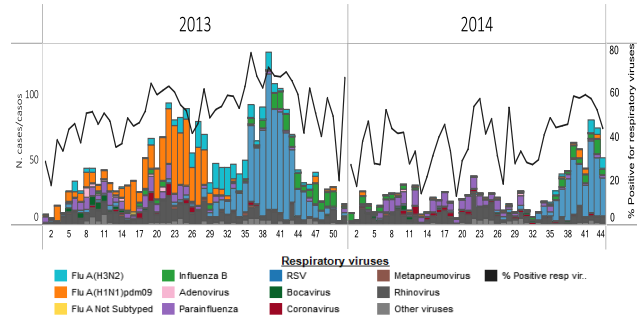
Cuba

- SARI activity remained elevated / La actividad de IRAG se mantiene elevada
- RSV has predominated among circulating virus / Entre los virus respiratorios, predomina la circulación de VSR

Cuba: SARI cases by age group, by EW, 2013-14
Casos IRAG por grupos de edad por SE, 2013-14



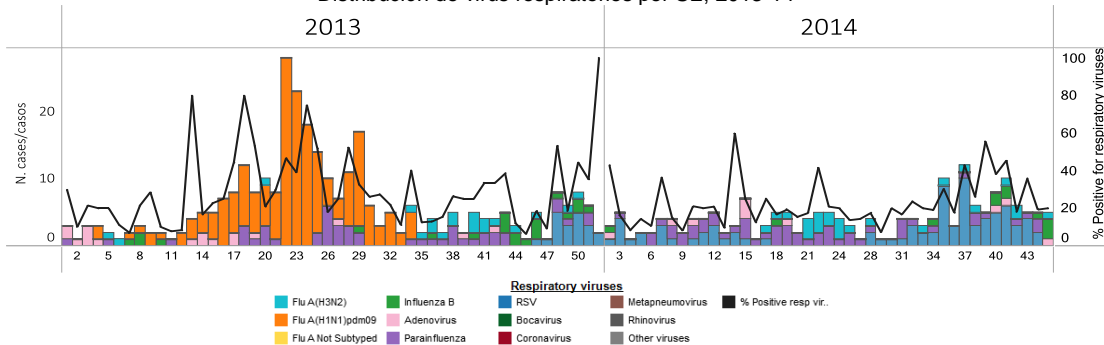
Cuba. Respiratory virus distribution by EW, 2013-14
Distribución de virus respiratorios por SE, 2013-14



Dominican Republic / República Dominicana

- RSV has predominated among circulating virus / Entre los virus respiratorios, predomina la circulación de VSR

Dominican Republic: Respiratory virus distribution by EW, 2013-14
Distribución de virus respiratorios por SE, 2013-14

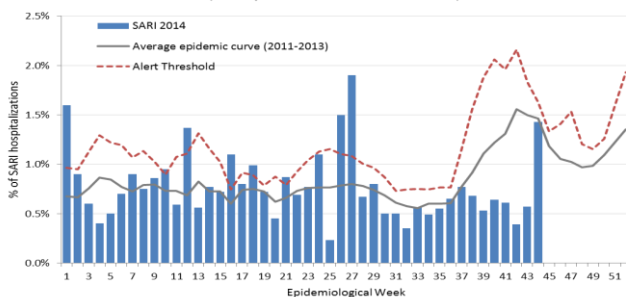


Jamaica

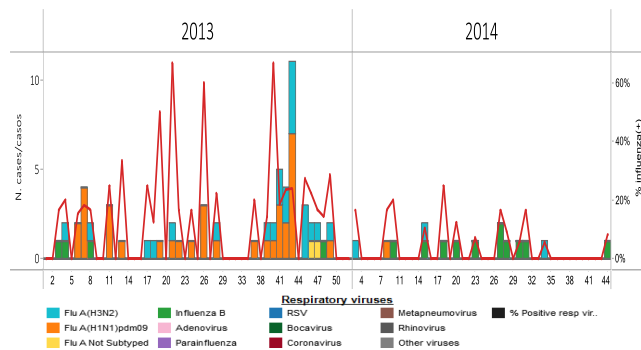
- SARI hospitalizations within expected levels / Las hospitalizaciones de IRAG en niveles esperados
- Very few influenza detections with predominated influenza B circulation / Muy pocas detecciones de influenza con predominio de circulación de influenza B

Jamaica: % SARI-related hospitalizations, by EW, 2014
% Hospitalizaciones asociadas a IRAG por SE, 2014

Jamaica: Percentage of Hospital Admissions for Severe Acute Respiratory Illness (SARI) 2014 (compared with 2011-2013)



Jamaica: Influenza virus distribution, by EW, 2013-14
Distribución de virus influenza. por SE, 2013-14

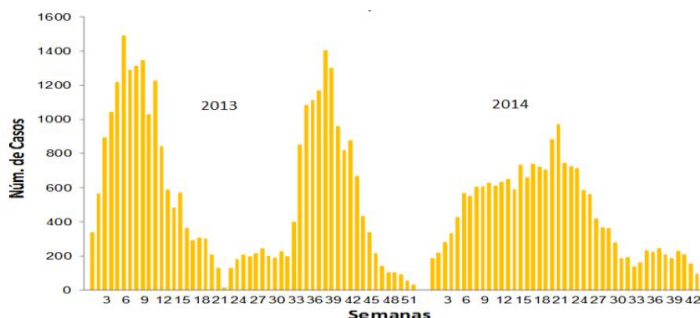


Puerto Rico

- Variable influenza activity / Actividad de influenza variable
- Influenza detections low and decreasing / Detecciones de influenza bajas y en descenso

Puerto Rico: Influenza-positive cases by EW, 2013-14
Casos positivos a influenza por SE, 2013-14

GRÁFICA 1. Número de Casos Positivos a Influenza por Semanas, Puerto Rico 2013-2014

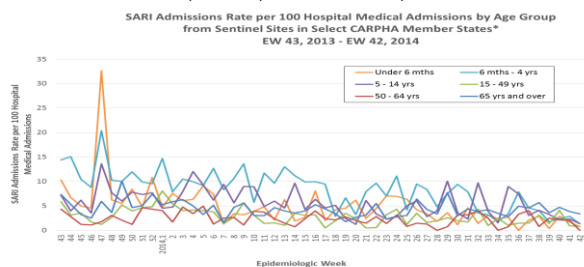


Datos actualizados hasta el 1 de noviembre de 2014
N (año 2013) = 32,162
N (año 2014) = 19,527

CARPHA

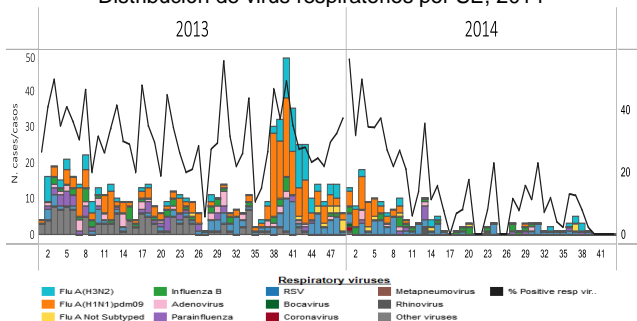
- SARI activity within expected levels / Actividad de IRAG dentro de niveles esperados
- RSV has predominated among circulating virus / Entre los virus respiratorios, predomina la circulación de VSR

CARPHA: SARI hospitalizations per 100 medical admissions by age group, EW 43, 2013 – EW 42, 2014
Hospitalizaciones IRAG por 100 ingresos médicos por grupo de edad, SE 43, 2013 – SE 42, 2014



* Note: Graph includes data from Barbados, Belize, Dominica, Jamaica, St. Lucia, St. Vincent/Grenadines, Suriname and Trinidad/Tobago.

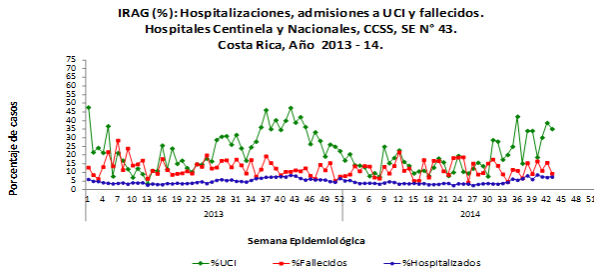
CARPHA: Respiratory virus distribution by EW, 2014
Distribución de virus respiratorios por SE, 2014



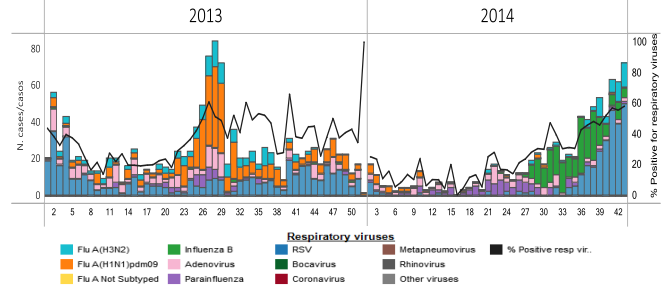
Costa Rica

- SARI activity within expected levels / Actividad de IRAG dentro de niveles esperados
- RSV has predominated among circulating virus / Entre los virus respiratorios, predomina la circulación de VSR

Costa Rica: Proportion of SARI-Associated Hospitalizations, ICU Admissions and Deaths, by EW, 2013-14



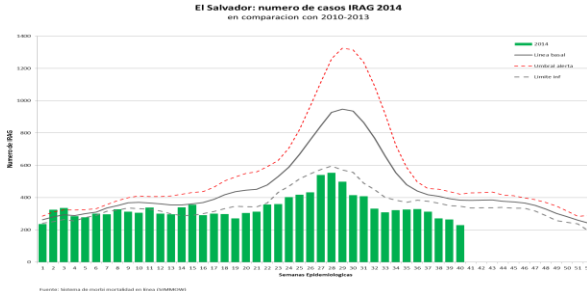
Costa Rica: Respiratory virus distribution, by EW, 2013-14



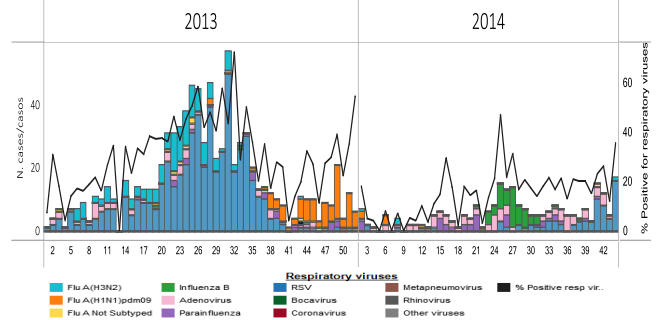
El Salvador

- SARI activity within expected levels / Actividad de IRAG dentro de niveles esperados
- RSV has predominated among circulating virus / Entre los virus respiratorios, predomina la circulación de VSR

El Salvador: Number of SARI cases, by EW, 2014



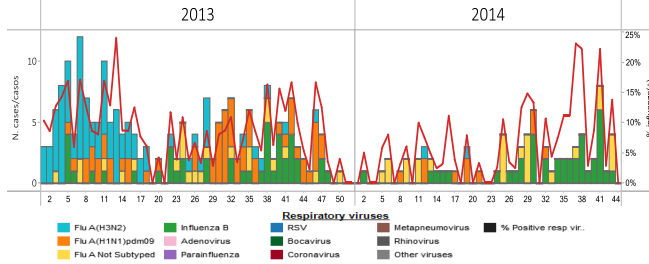
El Salvador: Respiratory virus distribution, by EW, 2013-14



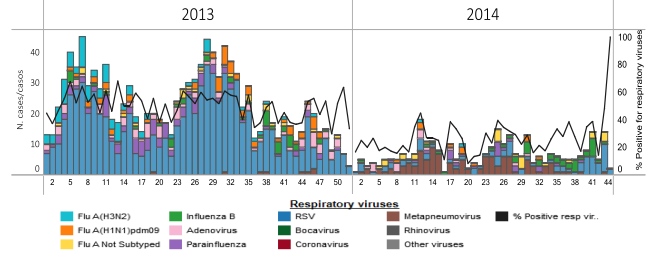
Guatemala

- RSV has predominated among circulating virus / Entre los virus respiratorios, predomina la circulación de VSR

Guatemala: Influenza virus distribution, by EW, 2014



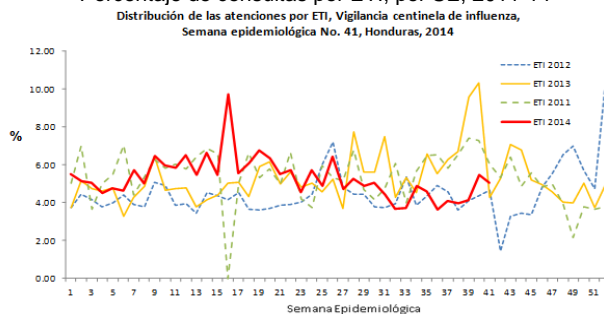
Guatemala: Respiratory virus distribution by EW, 2013-14



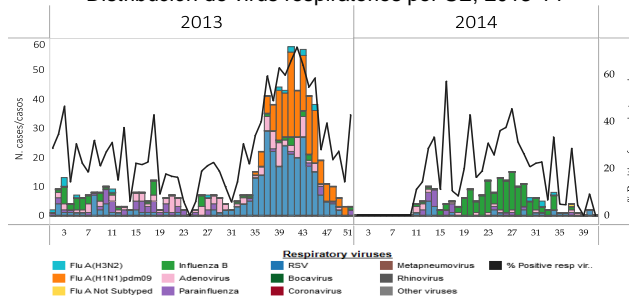
Honduras

- ILI / SARI activity within expected levels / Actividad de ETI/IRAG dentro de niveles esperados
- Very few respiratory virus detections with predominated influenza B / Muy pocas detecciones de virus respiratorios con predominio de influenza B

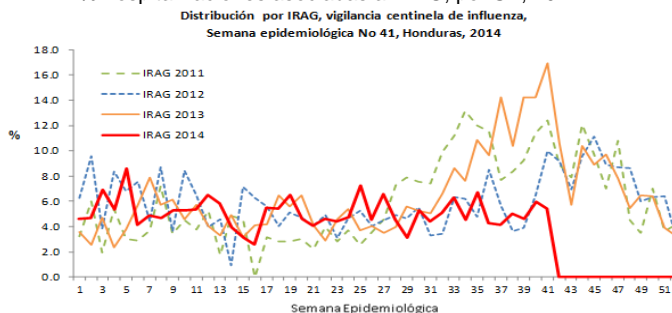
Honduras: Percent of Visits that are ILI by EW, 2011-14
Porcentaje de consultas por ETI, por SE, 2011-14



Honduras: Respiratory virus distribution by EW, 2013-14
Distribución de virus respiratorios por SE, 2013-14



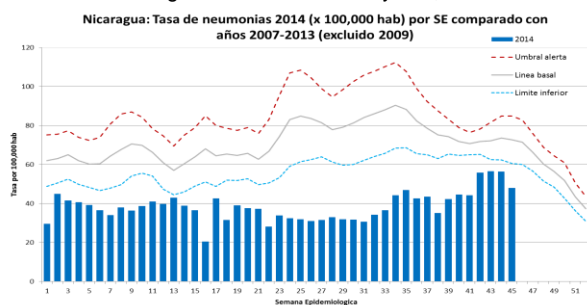
Honduras: % SARI-associated hospitalizations, by EW, 2011-14
% hospitalizaciones asociadas a IRAG, por SE, 2011-14



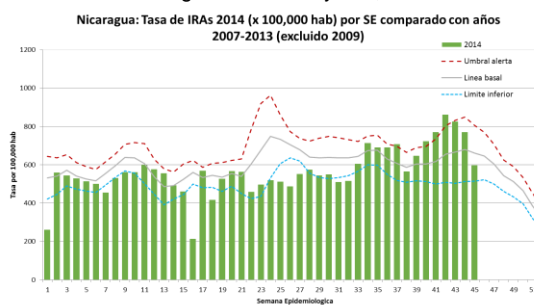
Nicaragua

- ARI activity remained within expected levels / Actividad de IRA dentro de niveles esperados
- Influenza A(H3N2) predominated circulation in the last five weeks / Predominio de circulación de influenza A(H3N2) en las últimas cinco semanas

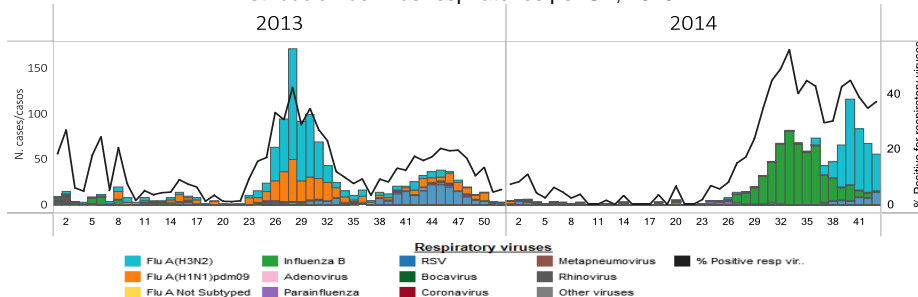
Nicaragua: Pneumonia rate by EW, 2014



Nicaragua: ARI rate by EW, 2014



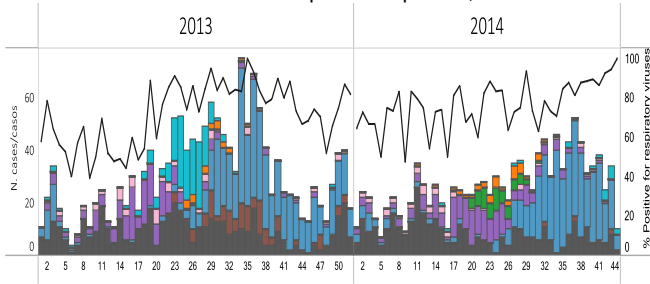
Nicaragua: Respiratory virus distribution by EW, 2013-14
Distribución de virus respiratorios por SE, 2013-14



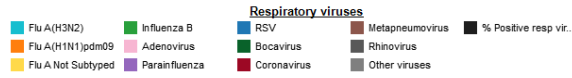
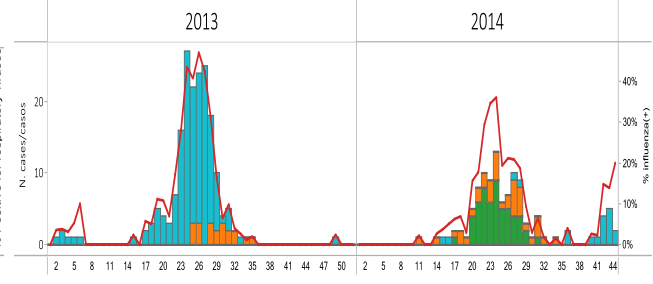
Panama

- RSV has predominated among circulating virus / Entre los virus respiratorios, predomina la circulación de VSR

Panama: Respiratory virus distribution by EW, 2013-14
Distribución de virus respiratorios por SE, 2013-14

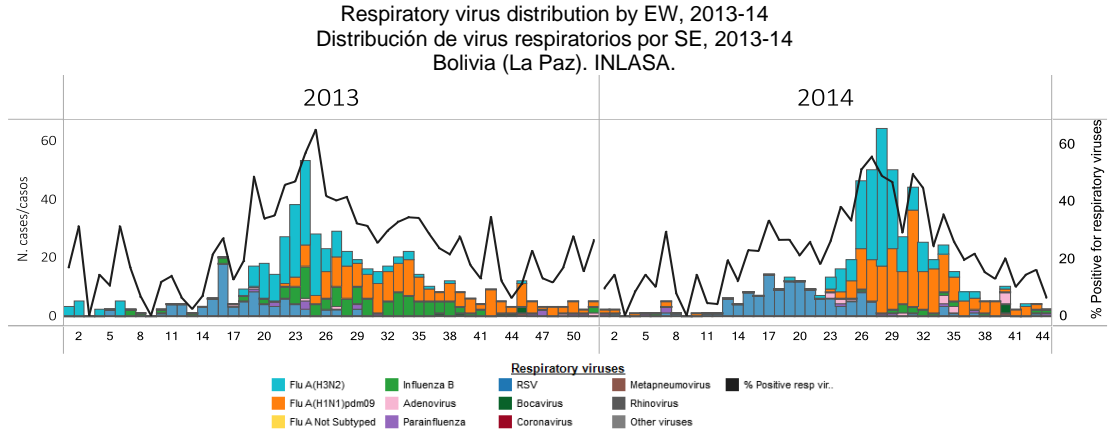


Panama. Influenza virus distribution by EW, 2013-14
Distribución de influenza por SE 2013-14



Bolivia

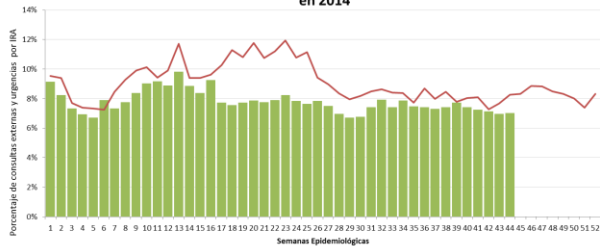
- Low respiratory virus activity with very few respiratory virus detections in the last four weeks / Actividad baja de virus respiratorios, con muy pocas detecciones de virus respiratorios en las últimas cuatro semanas



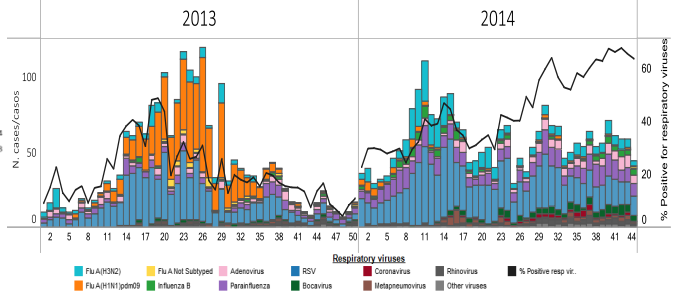
Colombia

- ARI activity within expected levels / Actividad de IRA dentro de niveles esperados
- RSV has predominated among circulating virus/ Entre los virus respiratorios, predomina la circulación de VSR

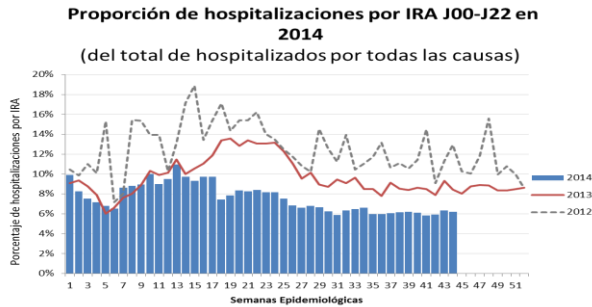
Colombia: ARI outpatient visits with J00-J20 codes, by EW, 2014
Proporción de Consultas externas y Urgencias por IRA (ambulatorios), J00-J22 en 2014



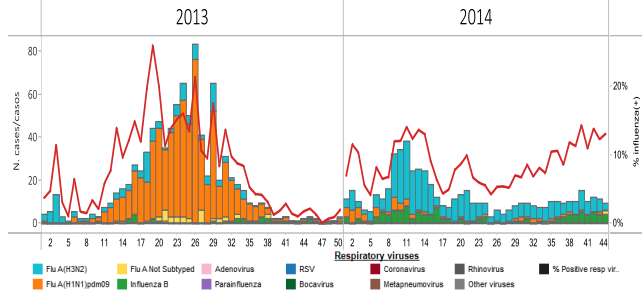
Colombia: Respiratory virus distribution by EW, 2013-14
Distribución de virus respiratorios por SE, 2013-14



Colombia: % Hospitalizations with J00 to J20 codes, by EW 2014



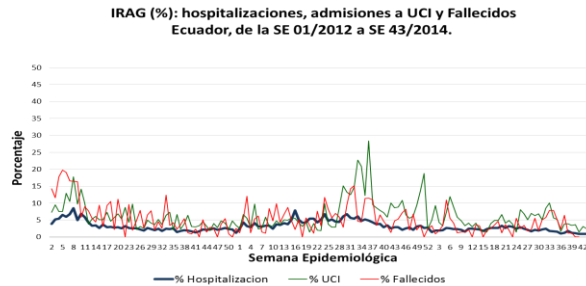
Colombia. Influenza virus distribution by EW, 2013-14
Distribución de virus influenza por SE, 2013-14



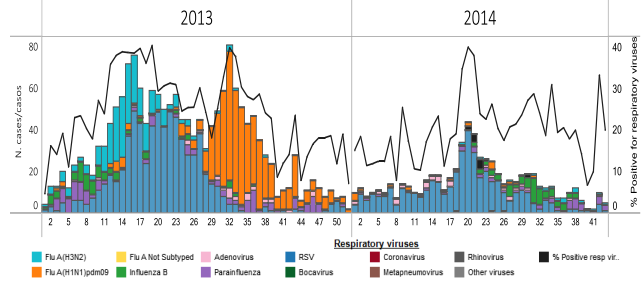
Ecuador

- SARI activity within expected levels / Actividad de IRAG dentro de niveles esperados
- Very few respiratory virus detections in the last five weeks with adenovirus and RSV circulation / Muy pocas detecciones de virus respiratorios en las últimas cinco semanas, con circulación de adenovirus y VSR

Ecuador: % SARI Hospitalizations, ICU Admissions & Deaths by EW 2013-14



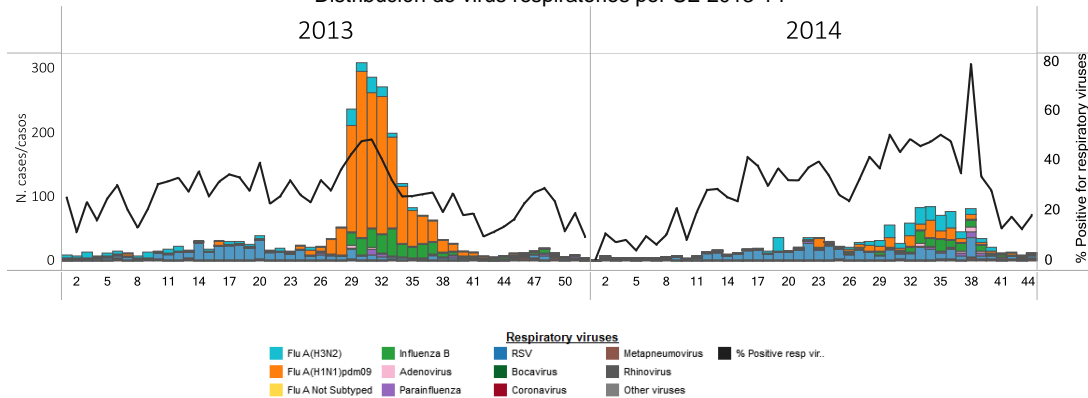
Ecuador (SARI): Respiratory virus distribution by EW, 2013-14 Ecuador (IRAG). Distribución de virus respiratorios, 2013-14



Peru

- Very few respiratory virus detections in the last five weeks with predominated RSV / Muy pocas detecciones de virus respiratorios en las últimas cinco semanas, con predominio de VSR

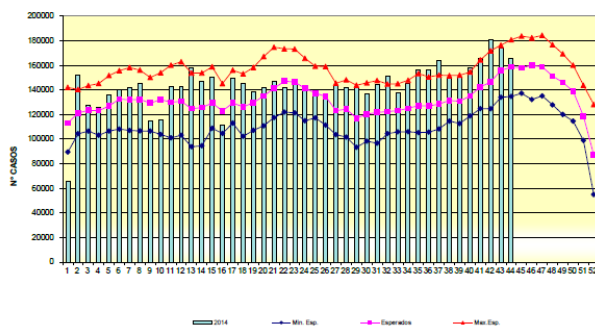
Peru. Respiratory virus distribution by EW, 2013-14 Distribución de virus respiratorios por SE 2013-14



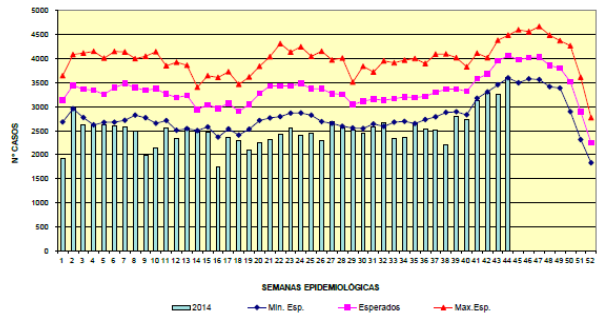
Venezuela

- ARI / Pneumonia activity within expected levels / Actividad de IRA/Pneumonía en niveles esperados

Venezuela: ARI endemic channel, 2006-2014 Canal endémico de IRA, 2006-2014
Infecciones respiratorias agudas
Canal endémico 2006 - 2014
República Bolivariana de Venezuela, 2014



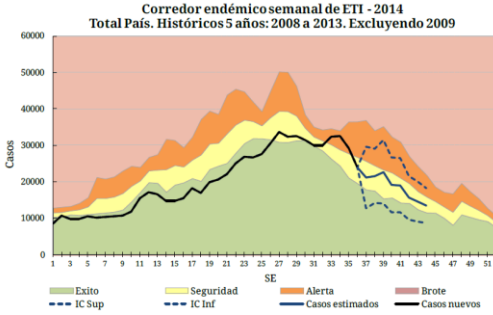
Venezuela: Pneumonia endemic channel, 2006-2014 Canal endémico de Neumonías, 2006-2014
Neumonías
Canal endémico 2006 - 2014
República Bolivariana de Venezuela 2014



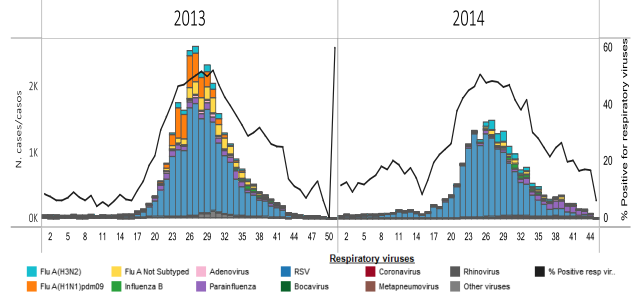
Argentina

- ILI / SARI activity within expected levels / Actividad de ETI/IRAG dentro de niveles esperados
- Downward trend of respiratory virus activity / Tendencia decreciente de actividad viral respiratoria

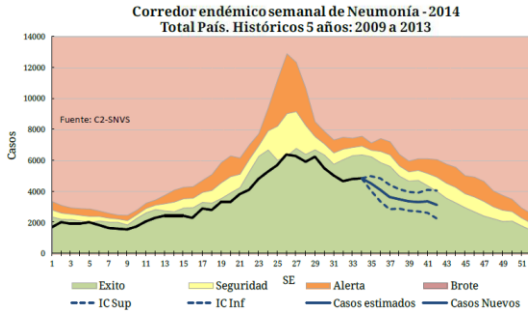
Argentina. ILI cases. Endemic channel, 2014



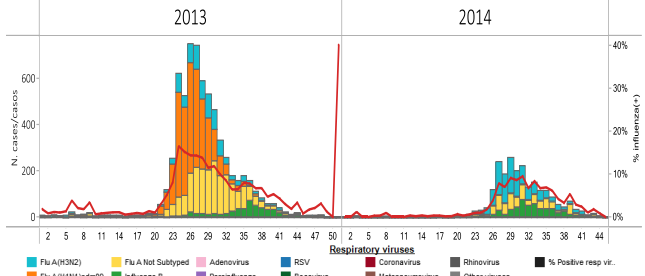
Argentina. Respiratory virus distribution by EW, 2013-14



Argentina. SARI cases. Endemic channel, 2014



Argentina. Influenza virus distribution by EW, 2014

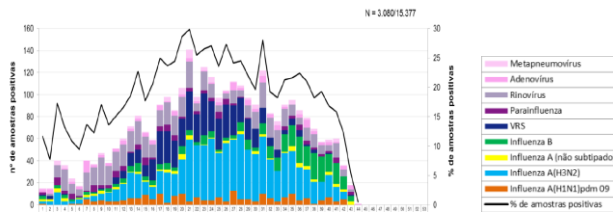


Brazil

- ILI / SARI activity within expected levels / Actividad de ETI/IRAG dentro de niveles esperados
- Downward trend of respiratory virus activity / Tendencia decreciente de actividad viral respiratoria

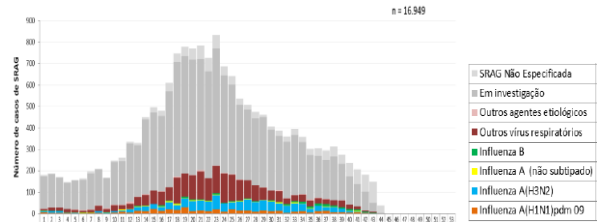
Brazil: Respiratory virus distribution in ILI cases, by EW, 2014

Distribuição de vírus respiratórios em casos ETI, por SE, 2014
 Figura 1. Distribuição dos vírus respiratórios identificados nas unidades sentinelas de Síndrome Gripal, por semana epidemiológica de início dos sintomas. Brasil, 2014 até a SE 44.



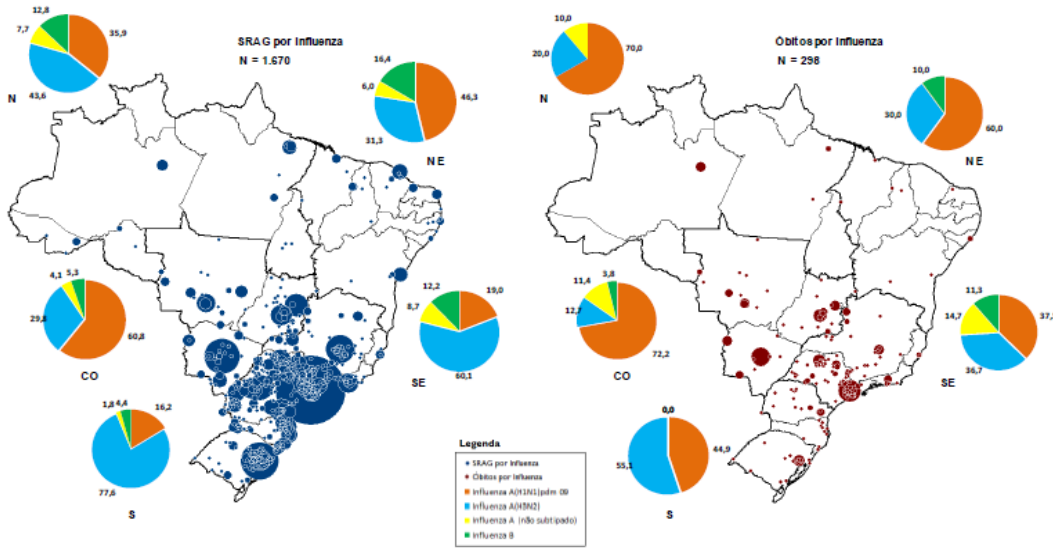
Brazil: Respiratory virus distribution, SARI cases, by EW, 2014

Distribuição de vírus respiratórios, casos IRAG, por SE, 2014
 Figura 3. Distribuição dos casos de Síndrome Respiratória Aguda Grave segundo agente etiológico e semana epidemiológica do início dos sintomas. Brasil, 2014 até a SE 44.



Brazil: Distribution of SARI hospitalizations and deaths by municipality and influenza type/subtype by region
 Distribución de hospitalizaciones y fallecidos por IRAG por municipio y tipo/subtipo de influenza por región

Anexo 4. Distribuição espacial dos casos e óbitos por Síndrome Respiratória Aguda Grave confirmados para influenza por município de residência e percentual dos vírus influenza identificados por região. Brasil, 2014 até a SE 44.

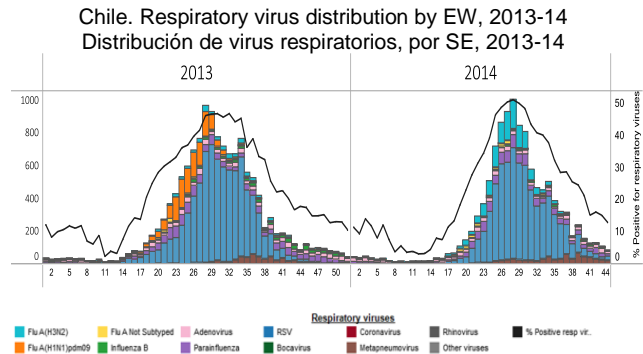
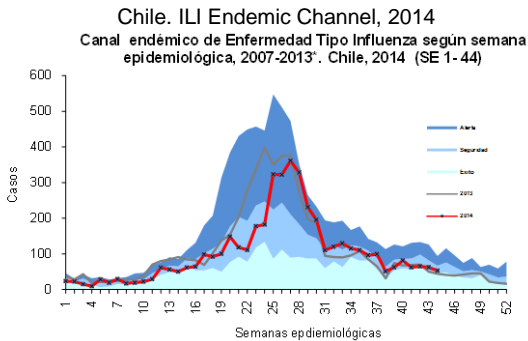


Fonte: SINAN Influenza Web. Dados atualizados em 04/11/2014, sujeitos a alteração.

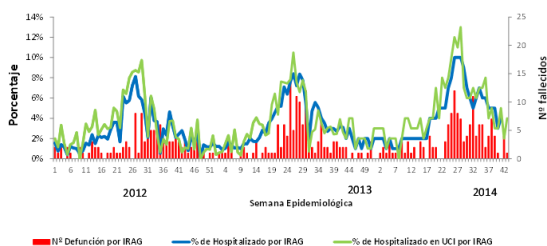
* O círculo é proporcional ao número de casos e óbitos. N = Norte; NE = Nordeste; SE = Sudeste; S = Sul; e CO = Centro Oeste.

Chile

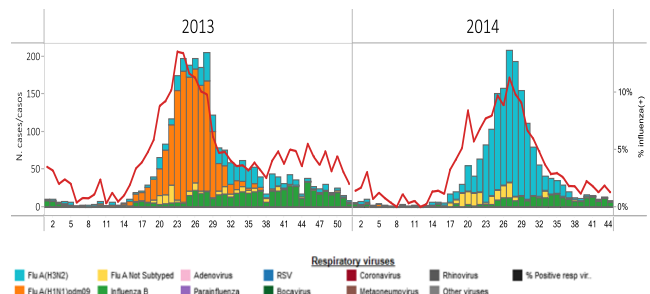
- ILI / SARI activity within expected levels and with an downward trend / Actividad de ETI/IRAG dentro de niveles esperados y en tendencia decreciente
- Few respiratory virus detections in the last four weeks with predominated metapneumovirus / Pocas detecciones de virus respiratorios en las últimas cuatro semanas con predominio de metapneumovirus



Chile. % SARI hospitalizations, ICU Adm and Deaths, 2012-14
 Porcentaje de hospitalizados, ingreso a UCI y número de fallecidos por IRAG según SE en Hospitales Centinela. Chile, 2012 - 2014 (*).



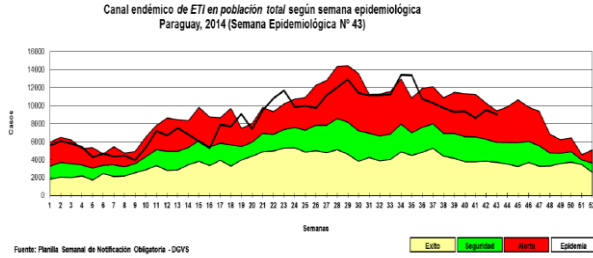
Chile: Influenza virus distribution by EW, 2013-14
 Distribución de virus de influenza, por SE, 2013-14



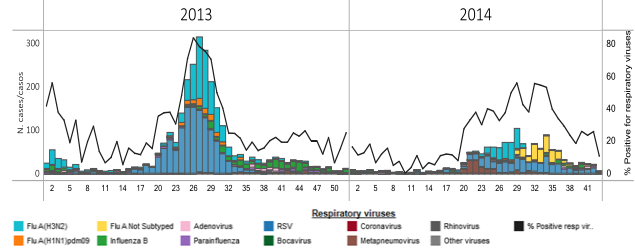
Paraguay

- ILI / SARI activity within expected levels / Actividad de ETI/IRAG dentro de niveles esperados
- Downward trend of respiratory virus detections with predominated RSV / Tendencia decreciente en las detecciones de virus respiratorios con predominio de VSR

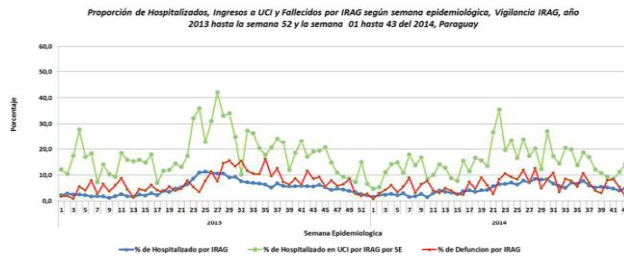
Paraguay. ILI endemic channel, by EW, 2014
Canal endémico de ETI por SE, 2014



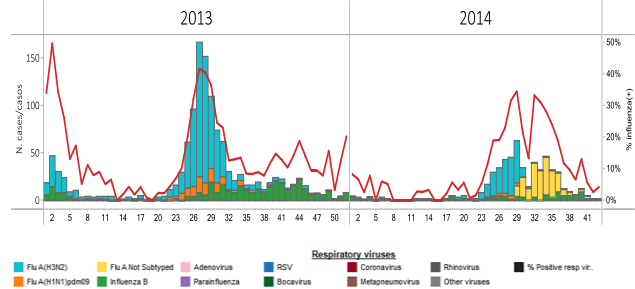
Paraguay. Respiratory virus distribution by EW, 2013-14
Distribución de virus respiratorios por SE, 2013-14



Paraguay: % SARI Hospitalizations, ICU Admissions & Deaths by EW 2013-14
Casos IRAG. Hospitalizaciones e ingresos en UCI & fallecidos (%) por SE, 2013-14



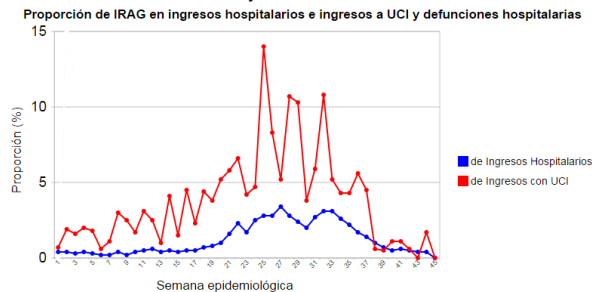
Paraguay: Influenza virus distribution by EW, 2013-14
Distribución de virus de influenza, por SE, 2013-14



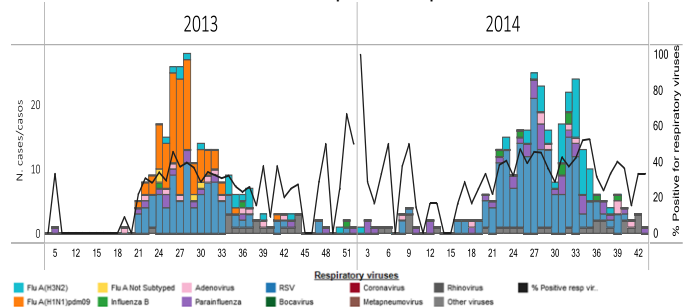
Uruguay

- SARI activity within expected levels / Actividad de IRAG dentro de niveles esperados
- Downward trend of respiratory virus detections / Tendencia decreciente en las detecciones de virus respiratorios

Uruguay: % SARI-associated hospitalizations & ICU admissions by EW, 2014
Proporción de IRAG en ingresos hospitalarios e ingresos a UCI y defunciones hospitalarias



Uruguay: Respiratory virus distribution by EW, 2013-14
Distribución de virus respiratorios por SE 2013-14



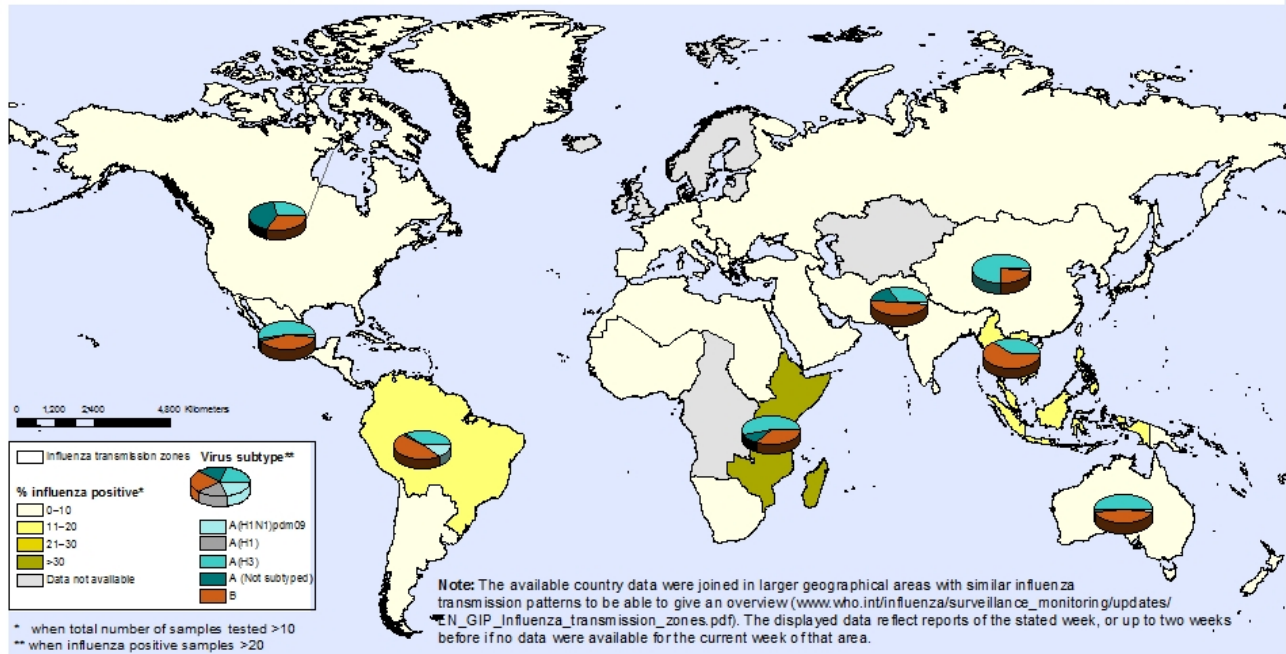
Influenza global update / Actualización de influenza a nivel global

- Globally, during EW 42 influenza activity was low, with the exception of some Pacific Islands / A nivel global, durante la SE 42 la actividad de influenza fue baja, con la excepción de algunas islas del Pacífico.
- The WHO GISRS laboratories tested more than 31 820 specimens: 1318 were positive for influenza viruses, of which 778 (59%) were typed as influenza A and 540 (41%) as influenza B. Of the sub-typed influenza A viruses, 46 (11%) were influenza A(H1N1)pdm09 and 374 (89%) were influenza A(H3N2). Of the characterized B viruses, 28 (100%) belonged to the B-Yamagata lineage and 0 (0%) to the B-Victoria lineage / Los laboratorios del sistema de vigilancia global de influenza y respuesta (GISRS) de la OMS realizaron pruebas a más de 31.820 muestras: 1.318 fueron positivas a influenza, de las cuales 778 (59%) se tipificaron como influenza A y 540 (41%) como influenza B. De los virus sub-tipificados de influenza A, 46 (11%) fueron influenza A(H1N1)pdm09 y 374 (89%) influenza A(H3N2). De los virus influenza B caracterizados, 28 (100%) pertenecían al linaje B-Yamagata y 0 (0%) al linaje B-Victoria.

Nivel global: Porcentaje de muestras respiratorias positivas a influenza por zona de transmisión de influenza, SE 42, 2014

Percentage of respiratory specimens that tested positive for influenza By influenza transmission zone

Status as of week 42
12 -20 October 2014



The boundaries and names shown and the designations used on this map do not imply the expression of any opinion whatsoever on the part of the World Health Organization concerning the legal status of any country, territory, city or area or of its authorities, or concerning the delimitation of its frontiers or boundaries. Dotted and dashed lines on maps represent approximate border lines for which there may not yet be full agreement.

Data Source: WHO/GIP, data in HQ as of 22 August 2014. Data used are from FluNet (www.who.int/flu-net), 08:15 UTC snapshot, from WHO regional offices and/or ministry of health websites.

 **World Health Organization**
© WHO 2014. All rights reserved.

ACRONYMS

ARI	Acute respiratory infection
CARPHA	Caribbean Public Health Agency
CENETROP	Centro de Enfermedades Tropicales (Santa Cruz, Bolivia)
EW	Epidemiological Week
ILI	Influenza-like illness
INLASA	Instituto Nacional de Laboratorios de Salud (La Paz, Bolivia)
INS	Instituto Nacional de Salud
ORV	Other respiratory viruses
SARI	Severe acute respiratory infection
SEDES	Servicio Departamental de Salud (Bolivia)
ICU	Intensive Care Unit
RSV	Respiratory Syncytial Virus

ACRÓNIMOS

CARPHA	Caribbean Public Health Agency
CENETROP	Centro de Enfermedades Tropicales (Santa Cruz, Bolivia)
ETI	Enfermedad tipo influenza
INLASA	Instituto Nacional de Laboratorios de Salud (La Paz, Bolivia)
INS	Instituto Nacional de Salud
IRA	Infección respiratoria aguda
IRAG	Infección respiratoria aguda grave
OVR	Otros virus respiratorios
SE	Semana epidemiológica
SEDES	Servicio Departamental de Salud (Bolivia)
UCI	Unidad de Cuidados Intensivos
VSR	Virus sincitial respiratorio