



"...because the risk factors of today are the diseases of tomorrow."

# PRIMERA MESA REDONDA PERSPECTIVA REGIONAL



**Pan American  
Health  
Organization**



Regional Office of the  
World Health Organization

# CARMEN

Collaborative Action for Risk Factor Prevention & Effective Management of Non-communicable Diseases



## GLOBAL/REGIONAL

- ✓ UN ECOSOC, JULY 2009
- ✓ WHO NCDnet
- ✓ Global Alliance on Chronic Disease (research orgs)
- ✓ Summit of the Americas, abril, 2009, Art 18 & 19
- ✓ ↑# countries with formal NCD program, budget, staff
- ✓ US Health Reform debate (2/3 del \$2Trillion=ENT)
- ✓ Trans fat free Americas 2007 -
- ✓ Dietary Salt reduction initiative 2009 –



## **POLICY AND ADVOCACY**

**Monitoring of laws for CVD, Obesity,  
diabetes**

**Course in Trade and chronic diseases**

**Directing Council Resolutions**

**Diabetes and Obesity Resolution**

**Cervical Cancer prevention and control**



## **Intervenciones en actividad fisica y alimentacion saludable: PRINCIPIOS**

**No solo “responsabilidad personal”; ahora mayor enfasis en cambios sistemicos**

**A los valores de la salud debe agregarse: sostenibilidad, cultura, comunidad y equidad**

**Salud debe probar su importancia a otros sectores claves: agricultura, transporte, comercio etc**

**Los ninos son una preocupacion clave para avanzar**

# Actividad Fisica: PRIORIDADES

**Abogar por Transporte Activo (TA): transporte masivo en la ciudad, incorporacion de bicicleta, defensa del peaton y crecimiento sostenible (“Smart Growth”)**

**Demostrar impacto en salud de TA**

**Ciclovias Recreativas: multiplicarlas**

**Reestablecer programas de Educacion Fisica Escolar**

# Alimentación Saludable: PRIORIDADES

**Desarrollo de agricultura local y eliminación de subsidios agrícolas**

**Incentivos a producción, comercio y consumo de *alimentos enteros* como frutas, hortalizas, cereales y legumbres**

**Regulación de publicidad a niños de *productos procesados* de bajo valor nutricional**

**Programas escolares de alimentación que usen más frutas y verduras**



## Surveillance of NCDs

[www.cncd\\_surveillance.org](http://www.cncd_surveillance.org)



# TOOLS:

Minimum NCD Data set :

**Products: NCD Basic indicators:**

Manual (Technical specifications)

Reporting format

Feeds up the PAHO IP Platform



**2010 PUBLICATION: BASIC DATA on NCDs**



# TOOLS: Methodology for Risk Factor Surveillance

Disease, risk and protective factors in adults:  
 Pan Am STEPS-  
 New fact sheet on Determinants & RF  
 E STEPS

<Site/Country > STEPS Survey <year>  
 Fact Sheet Analysis Guide

PLEASE use this as a guide when you are altering your instrument as it will provide you with a guideline for which questions are needed in order to calculate these basic indicators.

To calculate the basic indicators that are presented on the fact sheet refer to the Data Analysis section of the user manual (Part 4 Section 3)

Results for adults aged 25-64 years (incl. 95% CI) (adjust if necessary)	Questions required to calculate result (based on coding columns); always need C1, C2 or C3	Epi Info Program Name
<b>Step 1: Tobacco Use</b>		
Percentage who currently smoke tobacco daily	T2	TsmokeratutWT
For those who smoke tobacco daily		
Average age started smoking (years)	T2, T3	TsmokeageatmeWT
Average years of smoking	T2, T4e-c	TsmokeageatmeWT
Percentage smoking manufactured cigarettes	T2, T5a	TsmokeramtWT
For smokers of manufactured cigarettes		





## Improving information on incidence, prevalence and survival of diseases

**TOOLS: STEPS**  
Stroke  
methodology

Collaboration with IARC (International Agency for Research in Cancer)

Elements of joint plan for collaboration:

Political: Technical; capacity building,  
Dissemination



## Advances at sub-regional level



Group VENT (GT11 MERCOSUR  
on NCD surveillance)

- First Technical meeting on NCD surveillance of Andean countries (April 2009. Quito, Ecuador)
- Third Caribbean session on NCD surveillance at Meeting of Epidemiologists of 21 English speaking Caribbean



# CARMEN school



advances

## **5 courses part of CARMEN school:**

**Evidence Based Public Health Course( EBPH) originated  
St. Luis University**

**Chile, Uruguay, Brazil, Guatemala, Jamaica, Colombia**

**Physical Activity and Public Health (PAPH) North  
Carolina University**

**Costa Rica, Chile, Guatemala, Colombia, Trinidad & Tobago**

**Social Marketing course (SM) University of South Florida  
Panama, Mexico, Chile, Guatemala in prep.**

**Policy Analysis and Decision Making applied to NCDs  
(PADM) World Bank &PAHO**

**Barbados, El Salvador**

**Chronic Care Model (CCM) University of Miami  
USA**



## New developments

# Study on assessment of needs for capacity building on NCDs is in course

Participants: NCD/CARMEN country coordinators, NCD team members, PAHO country office Focal points for NCD, tobacco, alcohol, HP, academics from SPH

Please respond to contribute to further development of the CARMEN school



## PAHO-NLHBI CARMEN project

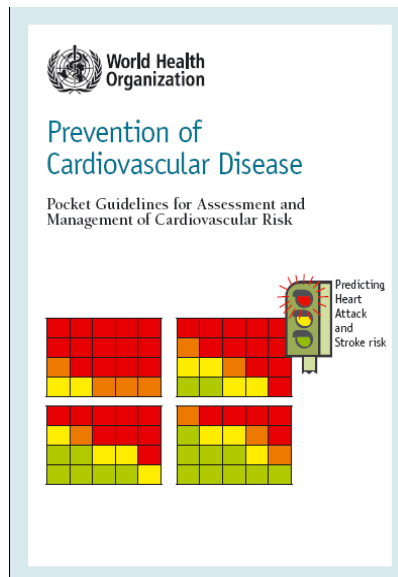
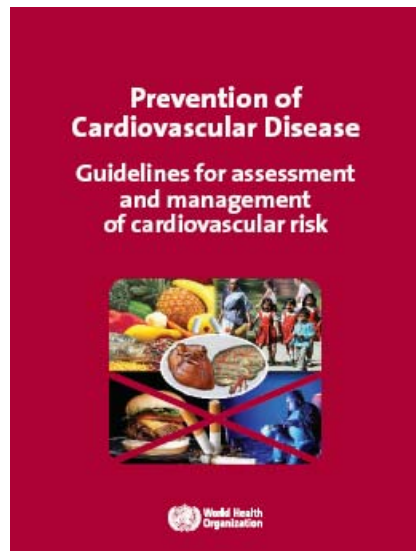
Chile, Argentina, Guatemala: Promotion of cardiovascular health through community intervention using lay health personnel



# Assessment and management of overall CVD risk

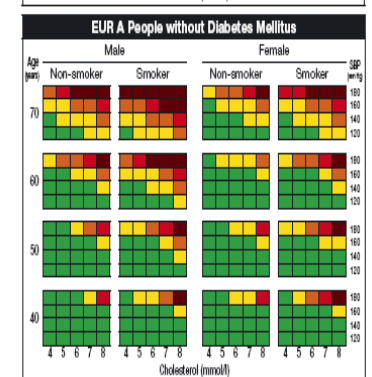
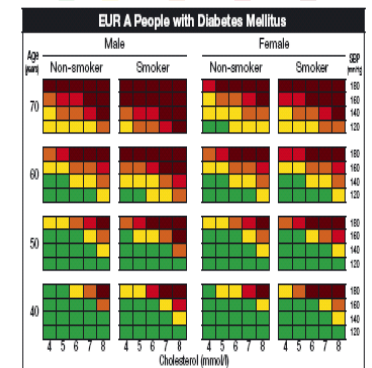
## Guidelines with Risk Prediction charts

Full guideline    Pocket version



**Figure 1** WHO/ISH risk prediction chart EUR A, for use in settings where blood cholesterol can be measured. 10-year risk of a fatal or non-fatal cardiovascular event by gender, age, systolic blood pressure, total blood cholesterol, smoking status and presence or absence of diabetes mellitus. This chart can only be used in countries of the WHO Region of Europe, subregion A. (See table 1)

Risk Level: <10%    10% to <20%    20% to <30%    30% to <40%    >40%





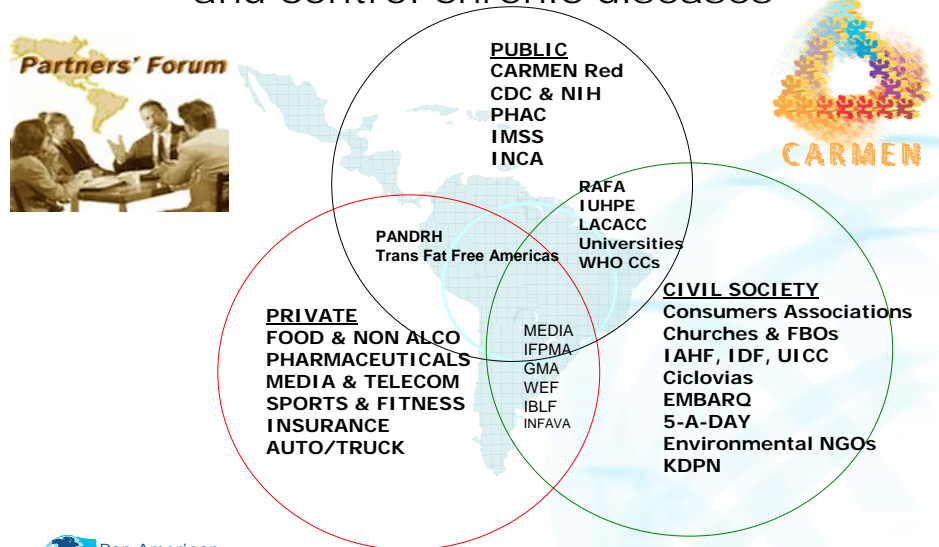


# PARTNERS FORUM

**New multi stakeholder approach being established by PAHO to catalyse cross sectoral action between public sector, private sector and civil society**

Government, private sector and civil society working together to prevent and control chronic diseases

2006

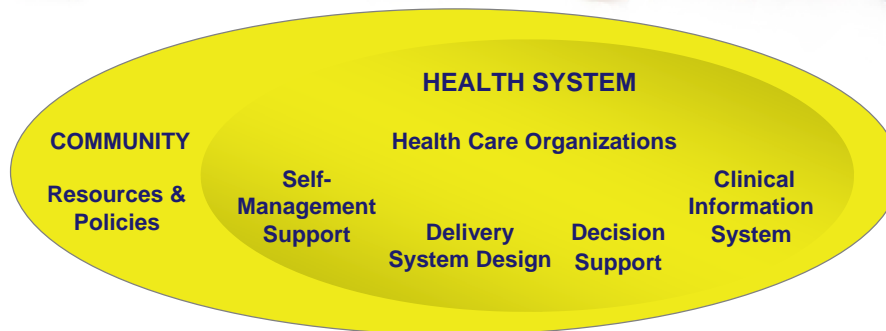


PAHO as convener and catalyst





## Chronic Care Model



Improved Outcomes



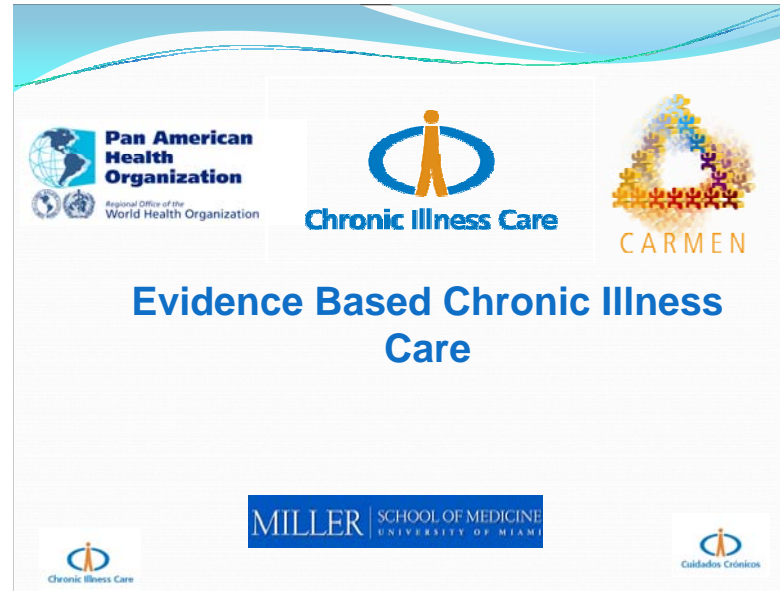
# NCD Management

[cronicare@paho.org](mailto:cronicare@paho.org)





## CAMEN School: Evidence Based Chronic Illness Care

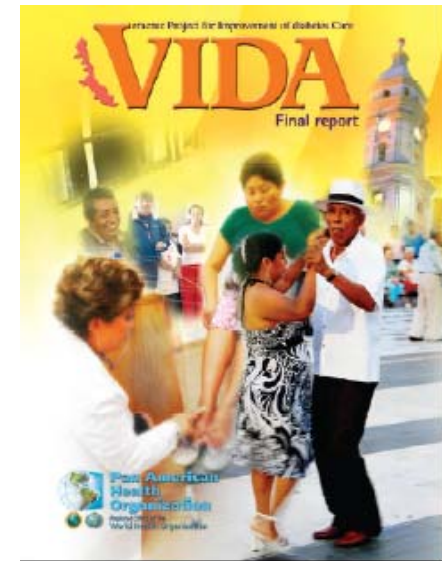


- First course organized with the University of Miami as face-to-face / on-line with 17 students from 14 countries.
- Fully on-line version in English and Spanish under preparation



## Quality of Care Improvement Projects

- Veracruz, Mexico: The VIDA Final Report to be released early 2010
- Central America Diabetes Initiative: On going in Costa Rica, El Salvador, Guatemala, Honduras and Nicaragua
- Caribbean Diabetes Project: ongoing in St. Lucia, Anguilla, Antigua & Barbuda, Trinidad & Tobago, Suriname, Barbados, Belize, Guyana & Grenada



WORLD **DIABETES** FOUNDATION





## Quality of Care Improvement Projects

- Planned for early 2009: Diabetes & Hypertension planned for early 2010 in Diadema, SP, Brazil;
- Breast cancer in Central America in preparation for 2010
- The Building Blocks on Diabetes Education and Control in Misiones Paraguay on going





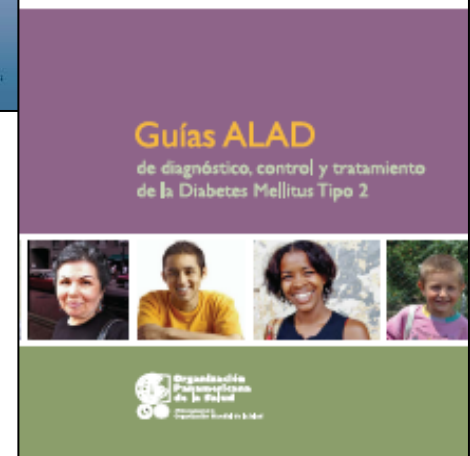
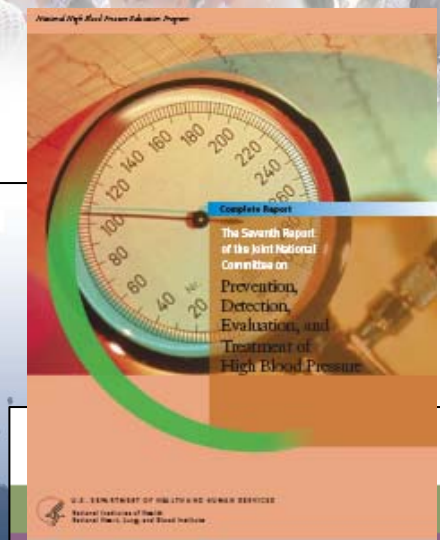
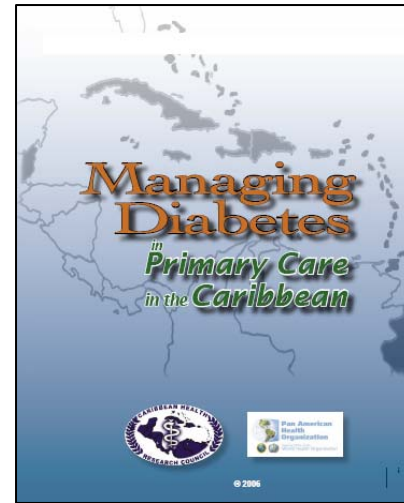
## **NCD Management: National Capacity for NCD Management Survey**

- **Questionnaire distributed by PAHO/WHO offices**
- **Answered by national NCD directors**
- **Response from 24 countries**
- **Questions included the existence of policy for coverage of medicines, guidelines, prices and list of essential medicines**
- **Preliminary Report Circulated**



# NCD Management

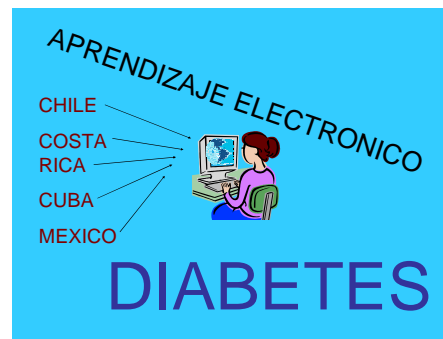
- Diabetes (ALAD & CHRC) and Hypertension Guidelines (CHRC) published in English & Spanish
- Hypertension Guidelines (JNC-7) in Spanish about to be released
- Breast Cancer Guidelines published in English & Spanish
- Workshop of Pediatric Cancer and Sickle Cell Disease Conducted
- Breast Cancer intervention in CA Planned for 2010





## Electronic Learning Projects (Support from WDF)

- Diabetes Education for Health Professionals: Mexico: concluded with success the first round and about to start the second round; Chile, Costa Rica and Cuba in phase of preparation
- Diabetes Education for Patients in Chile: On going







## Cancer Control

- **Cervical Cancer Prevention & Control: Resolution**
- **Central America Sub Regional Cancer Plan with the RESSCAD**
- **PAHO's Regional Plan of Action developed with MOH, NGOs**
  - **Strengthen Cancer Registries**
  - **Public Health**
  - **Cancer Treatment & Palliative Care**
  - **Pediatric Cancer**





[www.paho.org](http://www.paho.org)  
[cronic@paho.org](mailto:cronic@paho.org)