



Demographics and socioeconomic

Total Population (in 1000) (2020)	128,932.75
Population <1 year of age (in 1000) (2020)	2,140.73
Population 1 year of age (in 1000) (2020)	2,172.86
Population <5 years of age (in 1000) (2020)	10,958.74
Women of childbearing age (in 1000) (2020)	101,683.10
Infant Mortality Rate (per 1000 live births) (2017)*	12.1
Gross national income (US\$ per capita) current value (2020)	8,480.0
National Health Expenditure Public (2018)	0.0
National Health Expenditure Private (2018)	2.7

* study

Immunization system highlights

- There is a comprehensive multi-year plan for immunization covering 2020-2024.
- A standing national technical advisory group on immunization (NITAG) with formal written terms of reference exists. The group did not meet in 2020.
- 100% of spending on routine immunization is financed using government funds.
- 100% of spending on vaccine purchases is financed using government funds.
- A national nominal electronic immunization registry implementation is in progress.

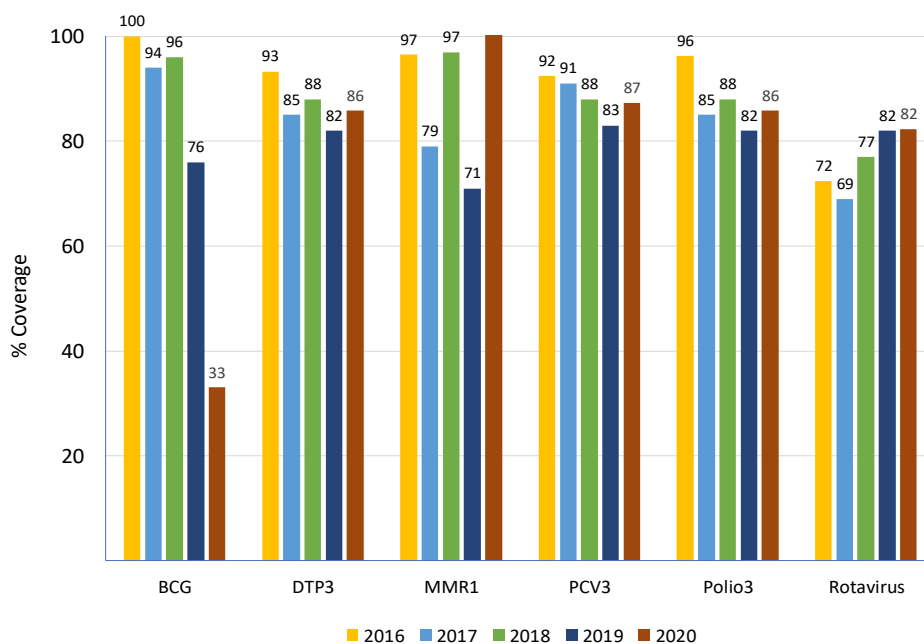
Vaccine Introduction

	Year
Bacterial Meningitis	
<i>Haemophilus influenzae</i> type b	1998
Hepatitis B	1998
HPV	2012
Influenza	2004
MMR1	1998
MMR2	1998
Pentavalent	1998
Pneumococcal Conjugate	2008
Rotavirus	2006
Tdap	
Tetavalent DPT-Hib or DPT-HepB	
Yellow Fever	

Immunization Schedule

MEX	Doses					
	1	2	3	4	5	6
BCG	B					
HepB pediatric	B	M2	M6			
DTP-Hib						
DTP-Hib-HepB						
DTP-Hib-IPV	M2	M4	M6	M18		
DTP-Hib-HepB-IPV	M2	M4	M6	M18		
DTP				Y4		
Influenza pediatric						
IPV						
OPV	M6-M59					
MMR	Y1	Y6				
Pneumoco conjugate	M2	M4	M12			
Rotavirus	M2	M4	M6			
Td						Y15
Tdap	after W20 gestation					
HPV	Y9-11	+M6				

Vaccination Coverage



Surveillance indicators

Acute flaccid paralysis (AFP) 2020

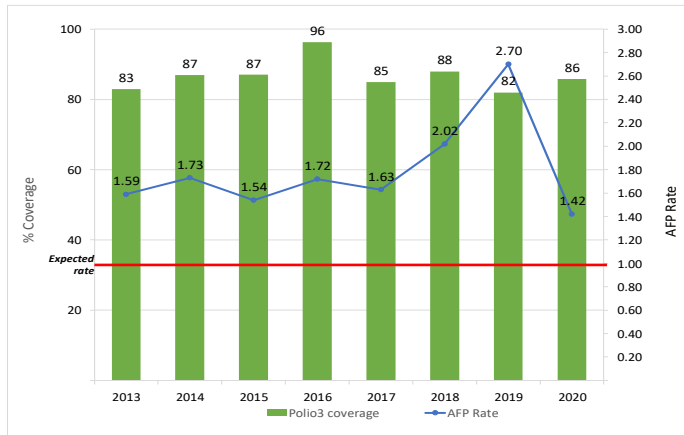
Number of AFP suspected cases	474
AFP rate per 100,000 population <15 years old	1.42
% of cases with 1 adequate samples	82
% of cases investigated within <48 hours	99
% sites reporting	30

Measles-rubella (MR) 2020

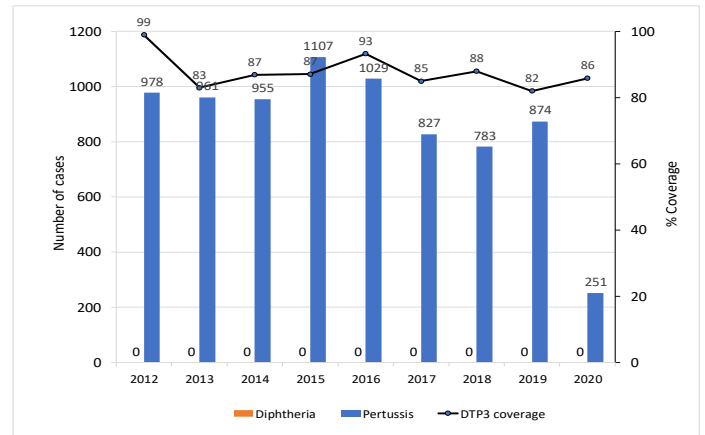
Number of MR suspected cases	2,504
% of cases with adequate investigation	95
% of cases with adequate blood samples	99
% of samples received in laboratory <=5 days	94
% of laboratory samples results <=4 days	90



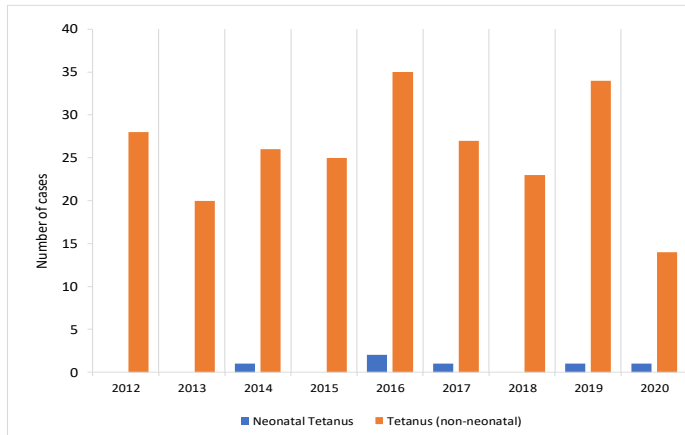
Polio3 coverage and AFP rate per 100,000 children <15 years of age



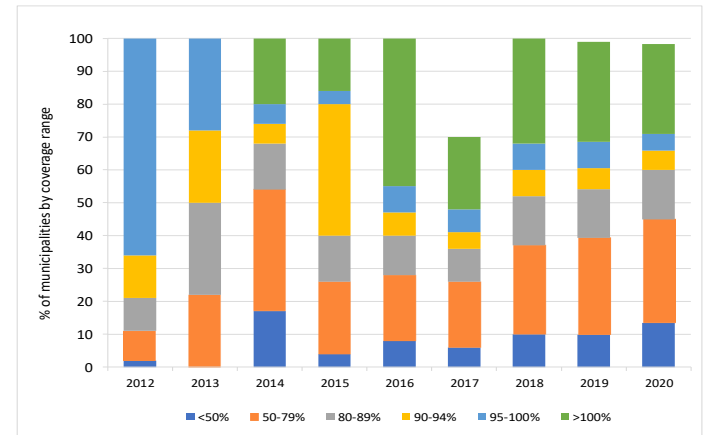
DTP3 coverage and number of reported diphtheria and pertussis cases



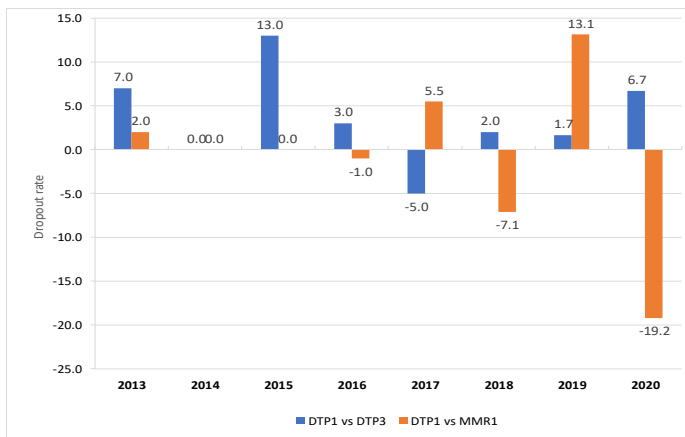
Number of tetanus (no neonatal) and neonatal tetanus cases



Proportion of municipalities by coverage range with DTP3 in children <1 years of age



DTP1-DTP3 and DTP1-MMR1 Dropout Rate



Legend
 NB/nb-newborn
 M/m-month
 Y/y-year
 WCBA-women of childbearing age
 ● with stockout
 ● no stockout
 ● no data available

Vaccine Stockout

MEX	2013	2014	2015	2016	2017	2018	2019	2020
AD syringes				●	●			
BCG	●	●	●	●	●	●	●	●
Disposable syringes	●					●	●	
DTP	●	●	●	●	●	●	●	●
HepB	●	●	●	●	●	●	●	●
Hib	●	●	●	●	●			
Influenza	●	●	●	●	●	●	●	●
IPV		●	●		●	●	●	
Measles	●	●	●	●	●	●	●	●
Pneumo. conjugate	●	●	●	●	●	●	●	●
Polio	●	●	●	●	●	●	●	●
Reconst. syringes	●			●	●	●	●	
Rotavirus	●	●	●	●	●	●	●	●
Safety boxes	●			●	●	●	●	
Tdap		●		●	●	●	●	●
TT	●	●	●	●	●	●	●	●
Yellow fever			●					