



Demographics and socioeconomic

Total Population (in 1000) (2020)	50,882.88
Population <1 year of age (in 1000) (2020)	750.37
Population 1 year of age (in 1000) (2020)	745.06
Population <5 years of age (in 1000) (2020)	3,710.70
Women of childbearing age (in 1000) (2020)	38,642.18
Infant Mortality Rate (per 1000 live births) (2016)*	16.8
Gross national income (US\$ per capita) current value (2020)	5,780.0
National Health Expenditure Public (2018)	5.5
National Health Expenditure Private (2018)	2.2

* estimate

Immunization system highlights

- There is a comprehensive multi-year plan for immunization covering 2020-2021.
- A standing national technical advisory group on immunization (NITAG) with formal written terms of reference exists. The group met 2 times in 2020.
- No information is available on spending on routine immunization financed using government funds.
- No information is available on spending on vaccine purchase financed using government funds.
- A national nominal electronic immunization registry is in place.

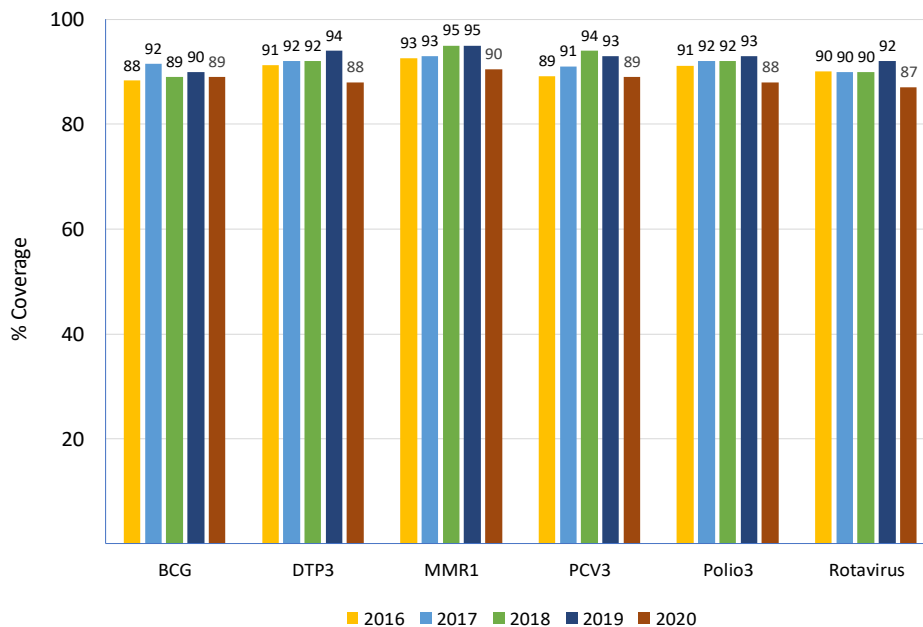
Vaccine Introduction

	Year
Bacterial Meningitis	
<i>Haemophilus influenzae</i> type b	1998
Hepatitis B	1994
HPV	2012
Influenza	2007
MMR1	1995
MMR2	1997
Pentavalent	2002
Pneumococcal Conjugate	2011
Rotavirus	2009
Tdap	
Tetavalent DPT-Hib or DPT-HepB	
Yellow Fever	2003

Immunization Schedule

COL	Doses					
	1	2	3	4	5	6
BCG	B					
HepB pediatric	B					
DTP-Hib						
DTP-Hib-HepB	M2	M4	M6			
DTP-Hib-IPV						
DTP-Hib-HepB-IPV						
DTP				M18	Y5	
Influenza pediatric						
IPV	M2	M4	M6			
OPV			6M	M18	Y5	
MMR	1A	5A				
Pneumoco conjugate	M2	M4	M12			
Rotavirus	M2					
Td	1st contact					
Tdap	W26 gestation					
HPV						

Vaccination Coverage



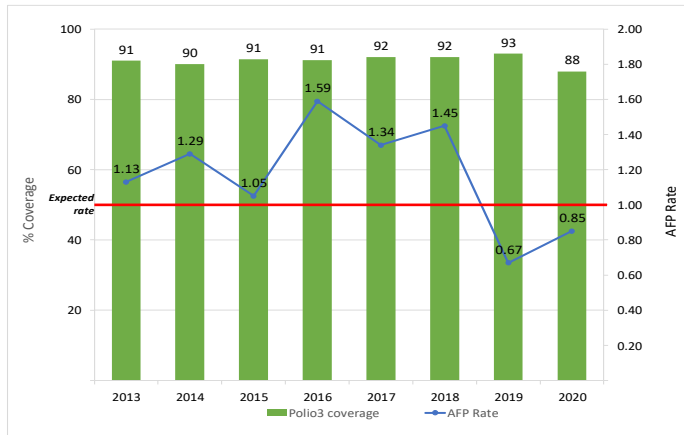
Surveillance indicators

Acute flaccid paralysis (AFP)		2020
Number of AFP suspected cases		110
AFP rate per 100,000 population <15 years old		0.85
% of cases with 1 adequate samples		79
% of cases investigated within <48 hours		76
% sites reporting		100

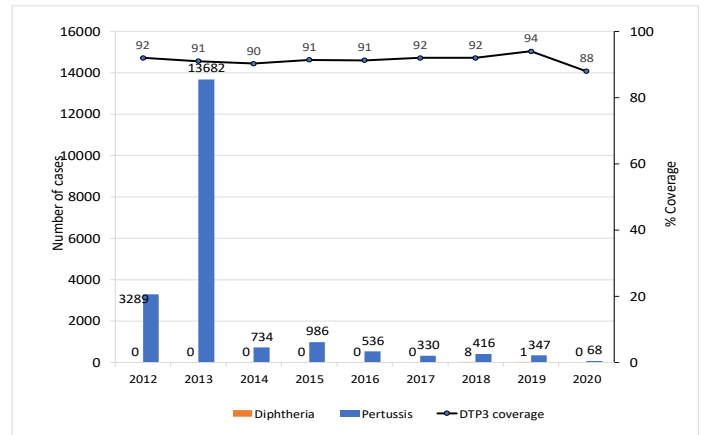
Measles-rubella (MR)		2020
Number of MR suspected cases		737
% of cases with adequate investigation		93
% of cases with adequate blood samples		93
% of samples received in laboratory <=5 days		96
% of laboratory samples results <=4 days		100



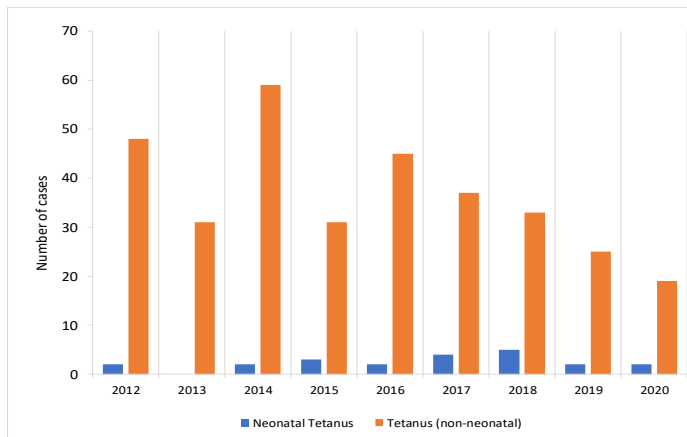
Polio3 coverage and AFP rate per 100,000 children <15 years of age



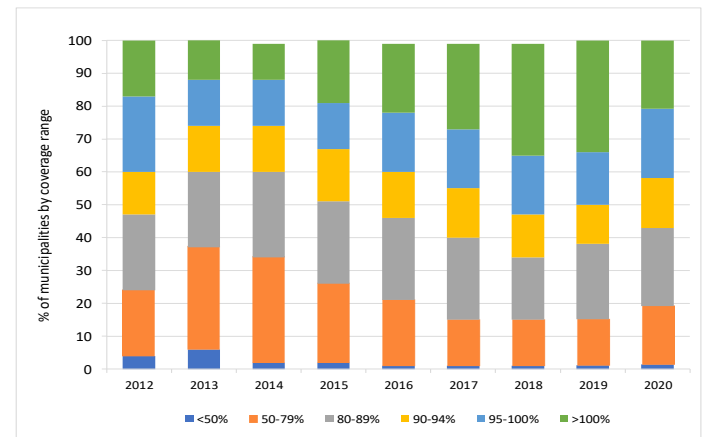
DTP3 coverage and number of reported diphtheria and pertussis cases



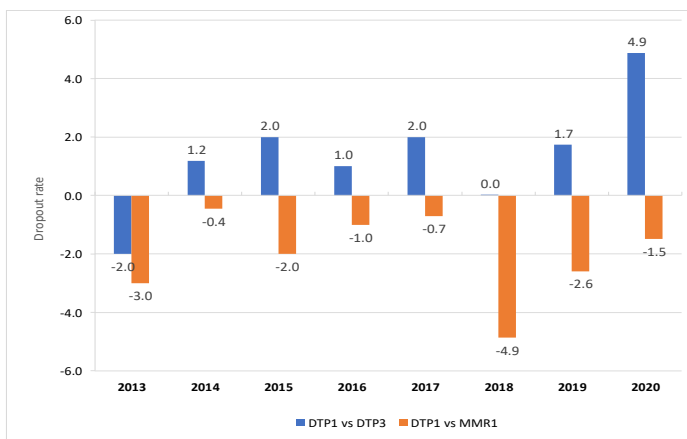
Number of tetanus (no neonatal) and neonatal tetanus cases



Proportion of municipalities by coverage range with DTP3 in children <1 years of age



DTP1-DTP3 and DTP1-MMR1 Dropout Rate



Legend

- NB/nb-newborn
- M/m -month
- Y/y-year
- WCBA-women of childbearing age
- with stockout
- no stockout
- no data available

Vaccine Stockout

COL	2013	2014	2015	2016	2017	2018	2019	2020
AD syringes		●	●	●	●	●	●	●
BCG	●	●	●	●	●	●	●	●
Disposable syringes	●	●	●	●	●	●	●	●
DTP	●	●	●	●	●	●	●	●
HepB	●	●	●	●	●	●	●	●
Hib	●	●	●	●	●	●	●	●
Influenza	●	●	●	●	●	●	●	●
IPV		●	●	●	●	●	●	●
Measles	●	●	●	●	●	●	●	●
Pneumo. conjugate	●	●	●	●	●	●	●	●
Polio	●	●	●	●	●	●	●	●
Reconst. syringes		●	●	●	●	●	●	●
Rotavirus	●	●	●	●	●	●	●	●
Safety boxes	●	●	●	●	●	●	●	●
Tdap		●	●	●	●	●	●	●
TT	●	●	●	●	●	●	●	●
Yellow fever	●	●	●	●	●	●	●	●