



Demographics and socioeconomic

Total Population (in 1000) (2020)	7,132.53
Population <1 year of age (in 1000) (2020)	143.08
Population 1 year of age (in 1000) (2020)	141.34
Population <5 years of age (in 1000) (2020)	701.09
Women of childbearing age (in 1000) (2020)	5,878.00
Infant Mortality Rate (per 1000 live births) (2017)*	12.6
Gross national income (US\$ per capita) current value (2020)	5,140.0
National Health Expenditure Public (2018)	2.9
National Health Expenditure Private (2018)	3.7

* data have one or more of the following limitations: coverage of maternal deaths and live births, differences in the maternal death definition, different denominators used, the analysis of only confirmed maternal deaths, and coverage of infant and neonatal deaths

Immunization system highlights

- There is no comprehensive multi-year plan (MYP) for immunization.
- A standing national technical advisory group on immunization (NITAG) with formal written terms of reference exists. The group met 10 times in 2020.
- 99% of spending on routine immunization is financed using government funds.
- 100% of spending on vaccine purchases is financed using government funds.
- A national nominal electronic immunization registry is in place.

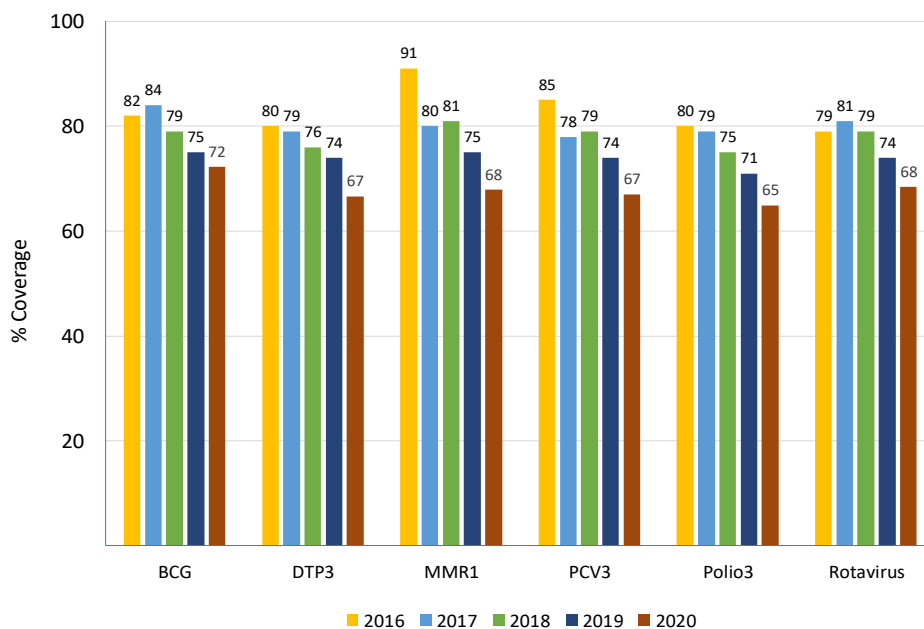
Vaccine Introduction

	Year
Bacterial Meningitis	
<i>Haemophilus influenzae</i> type b	2002
Hepatitis B	2002
HPV	2013
Influenza	2005
MMR1	2002
MMR2	2004
Pentavalent	2002
Pneumococcal Conjugate	2012
Rotavirus	2010
Tdap	
Tetavalent DPT-Hib or DPT-HepB	
Yellow Fever	2000

Immunization Schedule

PRY	Doses					
	1	2	3	4	5	6
BCG	B					
HepB pediatric	B					
DTP-Hib						
DTP-Hib-HepB	M2	M4	M6			
DTP-Hib-IPV						
DTP-Hib-HepB-IPV						
DTP				M18	Y4	
Influenza pediatric						
IPV	M2	M4				
OPV			M6	M18	Y4	
MMR	Y1	Y4				
Pneumoco conjugate	M2	M4	Y1			
Rotavirus	M2	M4				
Td	>Y7					
Tdap						
HPV						

Vaccination Coverage



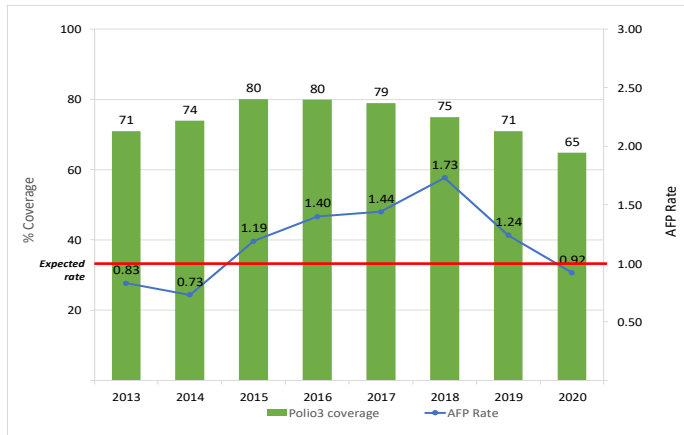
Surveillance indicators

Acute flaccid paralysis (AFP)	2020
Number of AFP suspected cases	19
AFP rate per 100,000 population <15 years old	0.92
% of cases with 1 adequate samples	58
% of cases investigated within <48 hours	89
% sites reporting	93

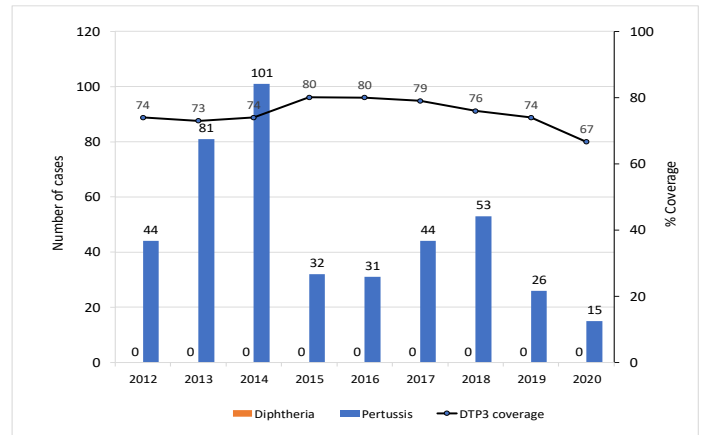
Measles-rubella (MR)	2020
Number of MR suspected cases	573
% of cases with adequate investigation	77
% of cases with adequate blood samples	92
% of samples received in laboratory <=5 days	86
% of laboratory samples results <=4 days	94



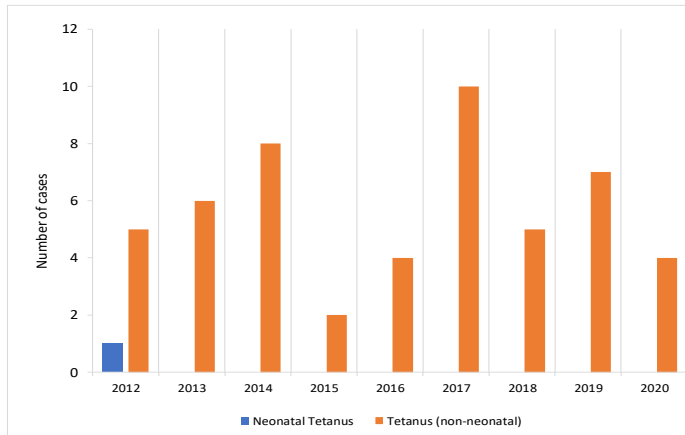
Polio3 coverage and AFP rate per 100,000 children <15 years of age



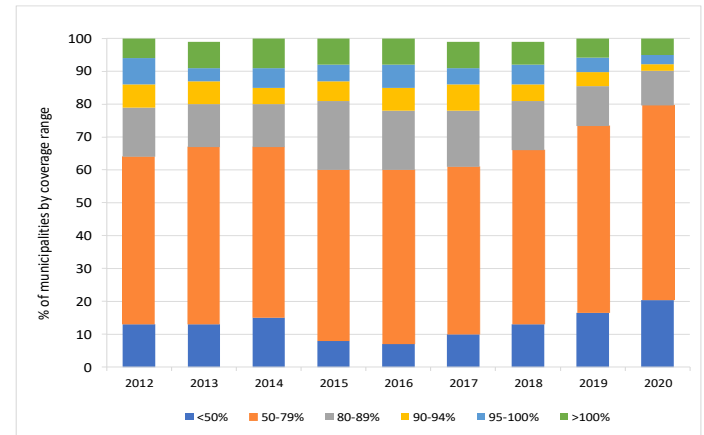
DTP3 coverage and number of reported diphtheria and pertussis cases



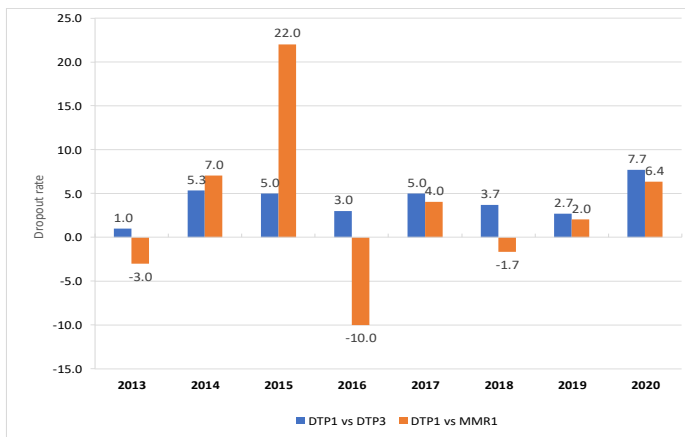
Number of tetanus (no neonatal) and neonatal tetanus cases



Proportion of municipalities by coverage range with DTP3 in children <1 years of age



DTP1-DTP3 and DTP1-MMR1 Dropout Rate



Legend

- NB/nb-newborn
- M/m-month
- Y/y-year
- WCBA-women of childbearing age
- with stockout
- no stockout
- no data available

Vaccine Stockout

PRY	2013	2014	2015	2016	2017	2018	2019	2020
AD syringes	●	●	●	●	●	●	●	●
BCG	●	●	●	●	●	●	●	●
Disposable syringes	●	●	●	●	●	●	●	●
DTP	●	●	●	●	●	●	●	●
HepB	●	●	●	●	●	●	●	●
Hib	●	●	●	●	●	●	●	●
Influenza	●	●	●	●	●	●	●	●
IPV	●	●	●	●	●	●	●	●
Measles	●	●	●	●	●	●	●	●
Pneumo. conjugate	●	●	●	●	●	●	●	●
Polio	●	●	●	●	●	●	●	●
Reconst. syringes	●	●	●	●	●	●	●	●
Rotavirus	●	●	●	●	●	●	●	●
Safety boxes	●	●	●	●	●	●	●	●
Tdap	●	●	●	●	●	●	●	●
TT	●	●	●	●	●	●	●	●
Yellow fever	●	●	●	●	●	●	●	●