



Demographics and socioeconomic

Total Population (in 1000) (2020)	6,486.20
Population <1 year of age (in 1000) (2020)	116.65
Population 1 year of age (in 1000) (2020)	115.76
Population <5 years of age (in 1000) (2020)	576.22
Women of childbearing age (in 1000) (2020)	5,136.04
Infant Mortality Rate (per 1000 live births) (2018)*	9.2
Gross national income (US\$ per capita) current value (2020)	3,650.0
National Health Expenditure Public (2018)	4.5
National Health Expenditure Private (2018)	2.6

* data have one or more of the following limitations: coverage of maternal deaths and live births, differences in the maternal death definition, different denominators used, the analysis of only confirmed maternal deaths, and coverage of infant and neonatal deaths

Immunization system highlights

- There is a comprehensive multi-year plan for immunization.
- A standing national technical advisory group on immunization (NITAG) with formal written terms of reference exists. The group met 6 times in 2020.
- 98% of spending on routine immunization is financed using government funds.
- 98% of spending on vaccine purchases is financed using government funds.
- A national nominal electronic immunization registry implementation is in progress.

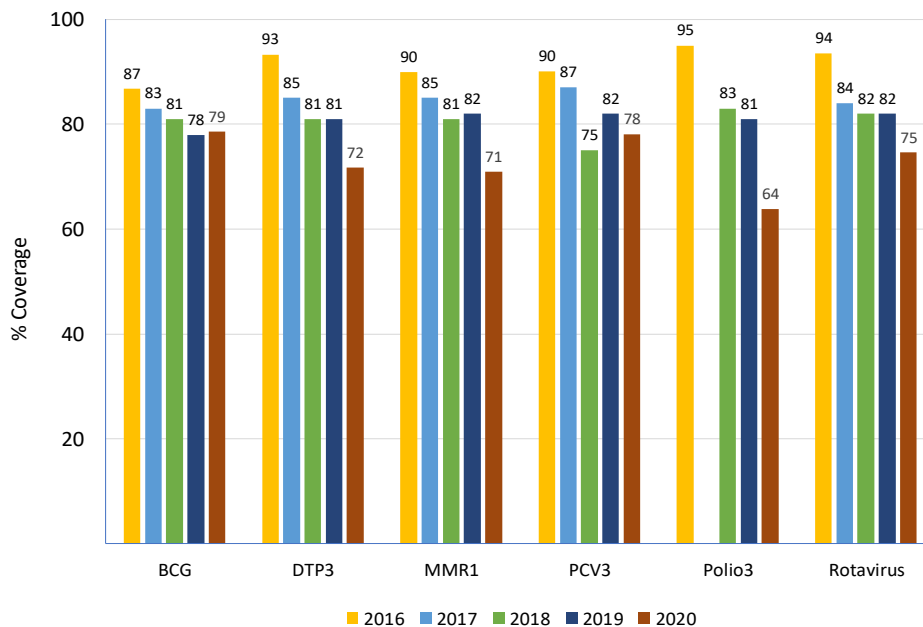
Vaccine Introduction

	Year
Bacterial Meningitis	
<i>Haemophilus influenzae</i> type b	2002
Hepatitis B	1999
HPV	2020
Influenza	2004
MMR1	1997
MMR2	2000
Pentavalent	2002
Pneumococcal Conjugate	2010
Rotavirus	2006
Tdap	
Tetavalent DPT-Hib or DPT-HepB	
Yellow Fever	

Immunization Schedule

SLV	Doses					
	1	2	3	4	5	6
BCG	B					
HepB pediatric	B					
DTP-Hib						
DTP-Hib-HepB	M2	M4	M6	M15-M18		
DTP-Hib-IPV						
DTP-Hib-HepB-IPV						
DTP					Y4	
Influenza pediatric	M6-Y5					
IPV	M2	M4				
OPV			M6	M15-M18	Y4	
MMR	M12	M15-M18				
Pneumoco conjugate	M2	M4	Y1			
Rotavirus	M2	M4				
Td						
Tdap						
HPV	Y9					

Vaccination Coverage



Surveillance indicators

Acute flaccid paralysis (AFP) 2020

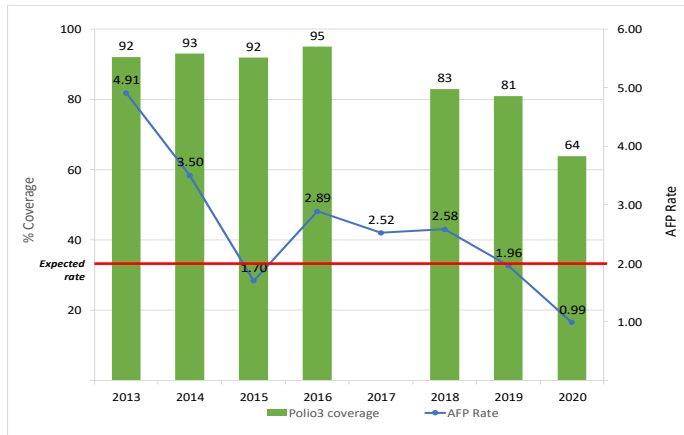
Number of AFP suspected cases	17
AFP rate per 100,000 population <15 years old	0.99
% of cases with 1 adequate samples	94
% of cases investigated within <48 hours	47
% sites reporting	9

Measles-rubella (MR) 2020

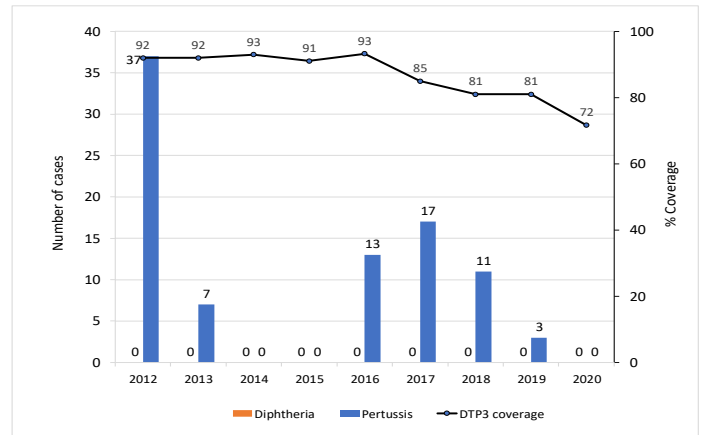
Number of MR suspected cases	191
% of cases with adequate investigation	87
% of cases with adequate blood samples	100
% of samples received in laboratory <=5 days	98
% of laboratory samples results <=4 days	93



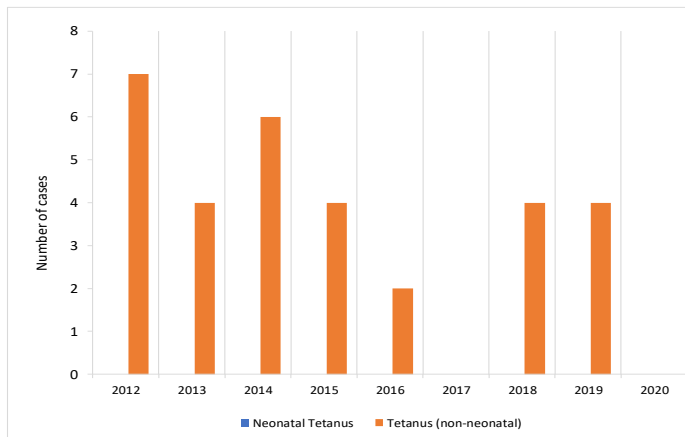
Polio3 coverage and AFP rate per 100,000 children <15 years of age



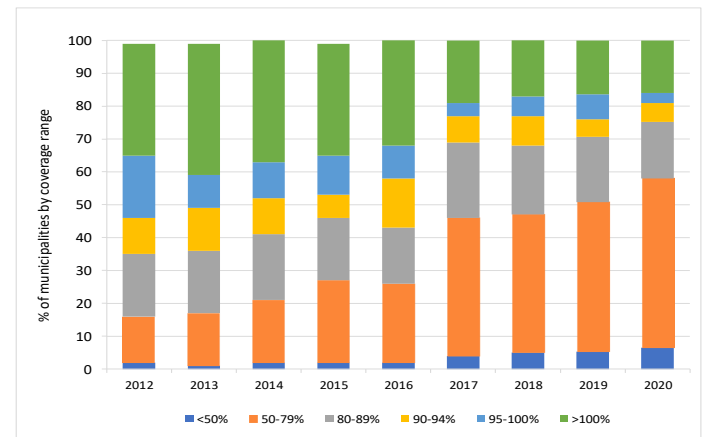
DTP3 coverage and number of reported diphtheria and pertussis cases



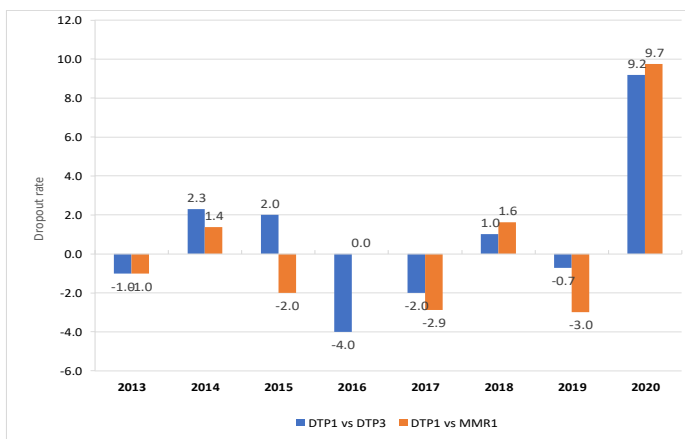
Number of tetanus (no neonatal) and neonatal tetanus cases



Proportion of municipalities by coverage range with DTP3 in children <1 years of age



DTP1-DTP3 and DTP1-MMR1 Dropout Rate



Legend
 NB/nb-newborn
 M/m-month
 Y/y-year
 WCBA-women of childbearing age
 ● with stockout
 ● no stockout
 no data available

Vaccine Stockout

SLV	2013	2014	2015	2016	2017	2018	2019	2020
AD syringes							●	●
BCG	●	●	●	●	●	●	●	●
Disposable syringes		●	●	●	●	●	●	●
DTP	●	●	●	●	●	●	●	●
HepB	●	●	●	●	●	●	●	●
Hib	●	●		●	●			
Influenza	●	●	●	●	●	●	●	●
IPV		●		●	●	●	●	●
Measles	●	●	●	●	●	●	●	●
Pneumo. conjugate	●	●	●	●	●	●	●	●
Polio	●	●	●	●	●	●	●	●
Reconst. syringes		●	●	●	●	●	●	●
Rotavirus	●	●	●	●	●	●	●	●
Safety boxes		●	●	●	●	●	●	●
Tdap		●	●	●	●	●	●	●
TT	●	●		●	●	●	●	●
Yellow fever	●	●	●	●	●	●	●	●