

# PAHO's Health Response at Regional Level

**Emergency Operations Unit  
PAHO Health Emergencies (PHE)**



**PAHO**



# Objective

---

Describe how the Organization provides support to countries



# Prevailing events and health impact 2016-2020

Event Type	Number of events	%	Total affected	Number of deaths	Number of injured	Number of homeless	Total damages ('000 US\$)
Biological	16	3%	406,724	858	229,381	No data available	No data available
Climatological	38	7%	7,275,849	264	455	24,614	74,162,669
Geophysical	26	5%	3,718,925	1,644	13,359	2,331	12,045,000
Hydrological	176	32%	8,229,521	1,841	9,486	20,635	38,508,200
Meteorological	178	32%	110,781,122	2,859	2,197	330,111	407,864,605
Technological	118	21%	4,479	2,845	1,886	No data available	No data available
<b>TOTAL (2016 - 2020)</b>	<b>552</b>	<b>1</b>	<b>130,416,620</b>	<b>10,311</b>	<b>256,764</b>	<b>377,691</b>	<b>532,580,474</b>

Source :EMDAT-EMO

# Health facilities : exposition to hazards

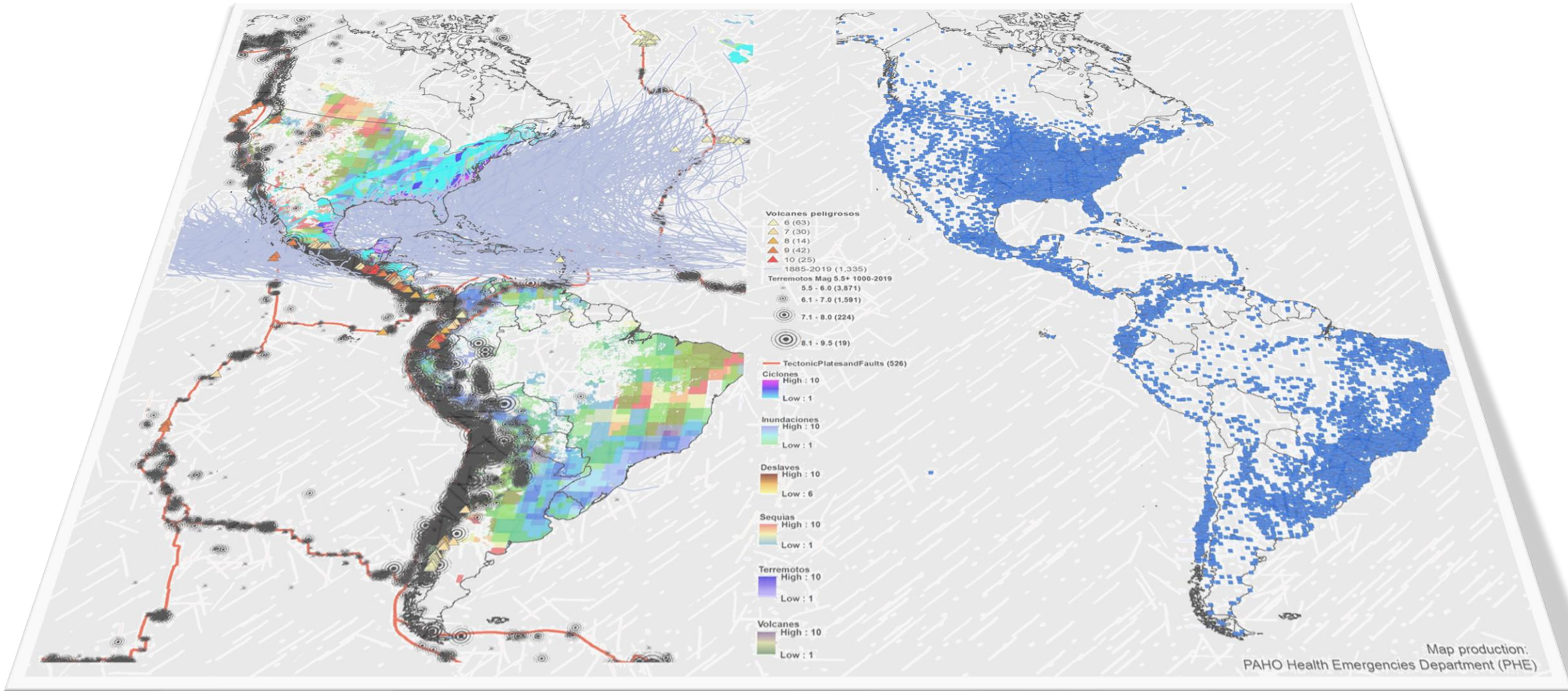
Row Labels	Exposition 8-10	Exposition 1-10	Hospitals
North America	2,558	5,561	6,925
Latin America	2,009	3,698	5,696
Central America	260	310	406
Latin Caribbean	265	346	434
Andean	867	1,183	1,833
South Cone	486	935	1,261
Non Latin Caribbean	45	110	152
<b>Grand Total</b>	<b>6,490</b>	<b>12,143</b>	<b>16,707</b>

Annotations: A bracket groups the 'Exposition 8-10' column with a value of 3,887. Another bracket groups the 'Hospitals' column with a value of 9,630.





Hospital/Hazard



# Objectives



- ✓ Mobilize a team of public health experts who can provide support to emergency operations (Regional Response teams, GOARN , EMT coordination )
- ✓ Cooperate with national authorities in carrying out rapid damage and needs assessments in the health sector
- ✓ Evaluate health information and assess potential public health risks for the population
- ✓ Gather and rapidly disseminate necessary public health information
- ✓ Advise the health sector in carrying out immediate interventions.





# Paho Country Support



- ❑ Critical Functions
- ❑ Core commitments
- ❑ Guiding principles
- ❑ Rapid Risk Assessment
- ❑ Grading
- ❑ Incident Management System
- ❑ Performance standards
- ❑ Response procedures



Honduras , Eta & Iota  
source: PAHO CO



# Conclusions



HAZARD  
KNOWLEDGE:  
REDUCE  
VULNERABILITY



MULTI-HAZARD  
APPROACH



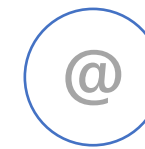
HEALTH SECTOR  
COORDINATION



INTER SECTORAL  
COORDINATION



INFORMATION  
ANALYSIS



COMMUNICATIONS



LOGISTICS  
LAST MILE