



## COVID-19 Situation Update - 131

18 June 2021

This situation update is on the Novel Coronavirus (COVID-19) reported cases, deaths and related vaccination status, Globally, Regionally, for Barbados and the Eastern Caribbean Countries, French Territories, and the United Kingdom Overseas Territories.



### PAHO Director asks G7 nations to prioritize Latin America and the Caribbean for 1 billion vaccine donations

*Only one in ten people have been vaccinated against COVID-19 in the region, where “hospitals are full, variants are rapidly circulating,” and “vaccines are urgently needed today.”*

Washington, D.C., June 16, 2021 (PAHO) – Following the G7 nations’ promise to donate 1 billion vaccine doses to countries in need, Pan American Health Organization (PAHO) Director Carissa F. Etienne urged them to prioritize Latin America and the Caribbean. “Those countries that are suffering the most should be at the front of the line,” she said.

During her weekly media briefing, she pointed out that only one in ten people in Latin America and the Caribbean have been fully

vaccinated against COVID-19. “Yet we are a region of more than 600 million people where cases are mounting, hospitals are full, and variants are rapidly circulating,” she said, adding that “vaccines are urgently needed today.”

Reporting on the pandemic’s deadly trajectory, Dr. Etienne said that more than 1.1 million new COVID-19 cases and 31,000 deaths were reported in the past week in the Americas, including the United States and Canada. For the past few weeks, four of the five countries with the highest weekly death counts in the world have been in the Americas.

“While vaccines are needed everywhere, we hope G7 nations will prioritize doses for countries at

#### Region of the Americas

**70,303,157**  
cases

**1,848,197**  
deaths in

**56**  
countries, areas, or territories

**555,427,054**  
total vaccine doses administered

#### Global

**177,108,695**  
cases

**3,840,223**  
deaths in

**236**  
countries, areas, or territories

**2,377,780,590**  
total vaccine doses administered

greatest risk,” she said, referring to those in Latin America and the Caribbean that have not yet received enough vaccines to protect even the most vulnerable.

At the same time, she said, vaccine acceptance is high in Latin America and the Caribbean, where “people are eager for a chance to get vaccinated.”

“I want to be clear that the primary issue in the Americas is vaccine access, not vaccine acceptance,” she said. [Read more...](#)

## COVID-19 highlights:

COUNTRY	COVID-19 HIGHLIGHT
Antigua and Barbuda	As of 16 June 2021, no new cases of COVID-19 were reported in Antigua and Barbuda
Barbados	On new COVID-19 case reported on 16 June 2021. The age range for booking first doses of the COVID-19 vaccine has dropped to 40 years old and over.
Saint Kitts and Nevis	On 17 June 2021, Saint Kitts and Nevis recorded its first COVID-19 related death.
St. Vincent and the Grenadines	On 17 June 2021, 5 new COVID-19 cases were reported



## COVID-19 Vaccination highlights:

COUNTRY	TYPE OF VACCINE	NUMBER OF VACCINE ADMINISTERED	
		1st Dose	2nd Dose
Anguilla	AstraZeneca	9,044	5,513
Antigua and Barbuda	AstraZeneca	35,611	26,593
Barbados	AstraZeneca	89,921	63,429
British Virgin Islands	AstraZeneca	12,350	7,756
Dominica	AstraZeneca	20,183	18,009
Grenada	AstraZeneca	18,415	9,514
Montserrat	AstraZeneca	1,379	1,190
Saint Kitts & Nevis	AstraZeneca	32,804	10,699
Saint Lucia	AstraZeneca	29,681	20,688
Saint Vincent & the Grenadines	AstraZeneca	23,403	-

## Barbados and the Eastern Caribbean Countries, French Territories and United Kingdom Overseas Territories

COUNTRY	CONFIRMED CASES	ACTIVE CASES	DEATHS	# OF TESTS	TRANSMISSION TYPE	STATUS OF SCHOOLS	TRAVEL RESTRICTIONS	MASKS MANDATORY	COVID-19 WEB ADDRESS AND HOTLINE
ANGUILLA	109	66	0	24,074	Clusters of cases	Open	Yes	No	<a href="https://beatcovid19.ai/">https://beatcovid19.ai/</a> (264) 476-7627
ANTIGUA & BARBUDA	1,263	0	42	-	Clusters of cases	Open	Yes	-	<a href="https://ab.gov.ag/detail_page.php?page=42">https://ab.gov.ag/detail_page.php?page=42</a> (268) 462-6843
BARBADOS	4,039	-	47	178,324	Community transmission	Online	Yes	Yes	<a href="https://gisbarbados.gov.bb/covid-19/">https://gisbarbados.gov.bb/covid-19/</a> (246) 536-4500
BRITISH VIRGIN ISLANDS	298	4	1	53,269	Clusters of cases	Both face to face & online	Yes	Yes	<a href="https://bvi.gov.vg/covid-19">https://bvi.gov.vg/covid-19</a> (284) 852-7650
>DOMINICA	191	2	0	18,058	Sporadic cases	Open	Yes	Yes	<a href="http://dominica.gov.dm/corona">http://dominica.gov.dm/corona</a> (767) 448-2151
FRENCH GUIANA	26,143	-	136	-	Community transmission	-	Yes	-	
GRENADA	161	0	1	33,596	Sporadic cases	Varied stages of reopening	Lifted	Yes	<a href="https://covid19.gov.gd/">https://covid19.gov.gd/</a> (473) 458-4787 / (473) 538-4787
GUADELOUPE	17,288	-	265	-	Community transmission	-	Yes	-	<a href="https://www.guadeloupe.ars.sante.fr/">https://www.guadeloupe.ars.sante.fr/</a>
MARTINIQUE	12,130	-	99	-	Community transmission	-	Yes	-	<a href="https://www.martinique.ars.sante.fr/">https://www.martinique.ars.sante.fr/</a>
MONTSERRAT	20	0	1	2,079	No cases	Face to face sessions	Yes	No	<a href="https://www.gov.ms/covid-19/">https://www.gov.ms/covid-19/</a>
SAINT BARTHELEMY	1,032	-	1	-	Clusters of cases	-	-	-	
ST KITTS & NEVIS	279	208	1	17,008	Clusters of cases	Open	Yes	Yes	<a href="https://www.covid19.gov.kn/">https://www.covid19.gov.kn/</a>
SAINT LUCIA	5,186	116	70	33,260	Community transmission	Online	Yes	Specific settings	<a href="https://www.covid19response.lc/">https://www.covid19response.lc/</a>
SAINT MARTIN	2,228	-	25	-	Community transmission	-	-	-	<a href="https://www.stmartinweek.fr/">https://www.stmartinweek.fr/</a>
ST VINCENT & THE GRENADINES	2,183	237	12	52,800	Community transmission	Online	No	Specific settings	<a href="http://health.gov.vc/health/index.php/c">http://health.gov.vc/health/index.php/c</a> (784) 534-4325
<b>TOTAL</b>	<b>61,650</b>	<b>633</b>	<b>701</b>	<b>410,598</b>					

Table 1: COVID-19 status in Barbados and the Eastern Caribbean Countries, French Territories and United Kingdom Overseas Territories. 'Sporadic cases' indicates countries/territories/areas with one or more cases, imported or locally detected. 'Clusters of cases' indicates countries/territories/areas experiencing cases clustered in time, geographic location and/or by common exposures.

*Data in red new. Disclaimer: Data is updated by 5:00PM each day and there could be delays in reporting. Any discrepancies from national data figures will be edited on the next issue.*

**BE AWARE.**

**PREPARE.**

**ACT.**

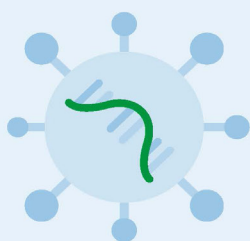
# Diagnostic testing for SARS-CoV-2 infection and Use of antigen-detection rapid diagnostic testing



## Diagnostic testing for SARS-CoV-2 infection

Countries need to test for **SARS-CoV-2** according to the national strategy, using available and approved diagnostic tests. WHO recommends testing of all **SARS-CoV-2** suspected cases.

### Types of tests:



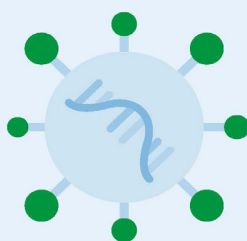
#### Nucleic acid amplification testing

Detects **genetic material** of the virus

Uses **upper respiratory specimens\*** to diagnose **acute SARS-CoV-2 infection**.

Nucleic acid amplification testing (NAAT), for example RT-PCR, is the **reference method for detection of acute SARS-CoV-2 infection**.

**Results:** usually available **within 24 hours**. Testing takes 30 minutes to 4 hours (depending on the test), but transport to the testing laboratory can add hours to days.



#### Antigen

Detection rapid diagnostic testing – detects **viral protein(s)**

Uses **upper respiratory specimens\*** to diagnose **acute SARS-CoV-2 infection**.

Performance is best within first 5-7 days of symptoms.

**Results:** within 15-30 minutes, not requiring laboratory infrastructure.



#### Antibody testing

Detects **antibodies** against the virus

Uses **serum/plasma or whole blood specimens** to detect antibodies generated by **prior SARS-CoV-2 infection or vaccination**.

SARS-CoV-2 antibodies are usually detectable 1-2 weeks after infection or vaccination.

**Results:** **within 24 hours**; point of care tests within 10-30 mins.

\*Some NAA tests and some Ag-RDTs are designed to work on upper respiratory track samples or saliva  
For more information: [https://www.youtube.com/watch?v=PhdSdJu\\_QXI](https://www.youtube.com/watch?v=PhdSdJu_QXI)

For more information: [https://www.youtube.com/watch?v=PhdSdJu\\_QXI](https://www.youtube.com/watch?v=PhdSdJu_QXI)

**BE AWARE.**

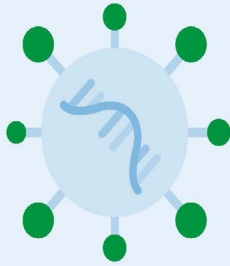
**PREPARE.**

**ACT.**



# Use of antigen-detection rapid diagnostic testing

WHO recommends that all suspected cases be tested for SARS-CoV-2



## Antigen-detection diagnostic testing

Uses upper respiratory specimen or saliva to test for SARS-CoV-2 infection by detecting viral proteins (e.g. nucleoprotein).

Can be used outside of clinical and laboratory settings, including in communities (\*)

Antigen-detection rapid diagnostic tests (Ag-RDT), with adequate performance ( $\geq 80\%$  sensitivity and  $\geq 97\%$  specificity compared to a NAAT reference assay) are easy to use, can rapidly detect SARS-CoV-2 infection and do not require laboratory infrastructure.

### HOW, WHEN, WHERE:

Ag-RDTs are used to detect acute SARS-CoV-2 infection and are best used for:

1

### CASE FINDING

As a primary case-detection tool for testing all suspected cases.

Can be used to detect SARS-CoV-2 in many settings including in health facilities, testing centers, care homes, prisons, schools, communities where there is ongoing transmission.

2

### CONTACT TRACING

To identify infection among asymptomatic contacts of cases (1)

3

### OUTBREAK INVESTIGATIONS

To confirm suspected outbreaks of COVID-19 among symptomatic individuals, especially in closed or semi-closed settings including schools, care-homes, cruise ships, prisons, work-places and dormitories, etc

4

### MONITOR TRENDS

To monitor trends in disease incidence in communities, and particularly among frequently exposed workers, including health and care workers, irrespective of symptoms.

\*Trained individuals can carry out Ag-RDT testing. WHO training materials can be found here: <https://extranet.who.int/goarn/sars-cov-2-antigen-rapid-diagnostic-test-training-package>

<sup>1</sup> Ag-RDTs can be used to test asymptomatic contacts of confirmed cases, even if the Ag-RDT is not specifically authorized for this use.

For more information see WHO guidance September 2020: <https://www.who.int/publications/i/item/antigen-detection-in-the-diagnosis-of-sars-cov-2-infection-using-rapid-immunoassays>

Link to previous Situation Updates



[www.paho.org/coronavirus](http://www.paho.org/coronavirus)



PAHOWHOCaribbean



PAHOCaribbean

**BE AWARE.**

**PREPARE.**

**ACT.**